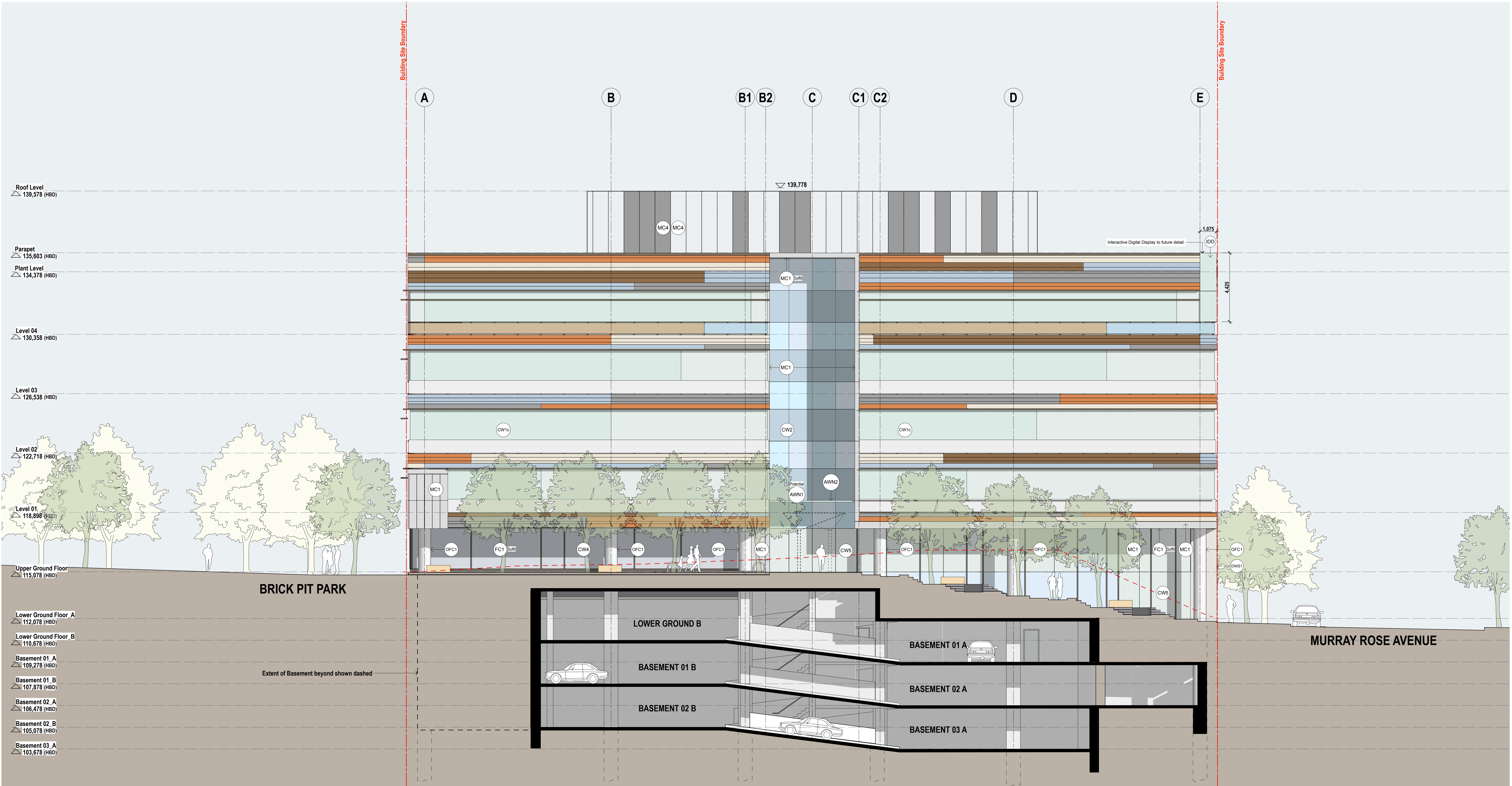


Materials + Finishes Schedule

- (CW1a) Curtain Wall System Type 1a: Curtain wall system to Facade Engineer's specification. Aluminium frame- powdercoat finish. Colour equal to Interpon 'Anodic Stellar Bronze Matt'. Glass panels- Colours equal to blue, bronze, grey, clear, clear reflective. Thermal performance to Facade Engineer's requirements. Solid panels- Colours and finish equal in appearance to terracotta. Random distribution of panels in 5 colours. Colours equal to Moeding Alphaton 'Braun', 'Naturrot', 'Eisengrau', 'Blaugrau' and 'Perlgrau'.
- (CW1b) Curtain Wall System Type 1b: Curtain wall system as per CW1a, including balcony glazing and sun shading system.
- (CW1c) Curtain Wall System Type 1c: Curtain wall system as per CW1a, including sun shading system.
- (CW2) Curtain Wall System Type 2: Curtain wall system to Facade Engineer's specification. Aluminium frame- powdercoat finish. Colour equal to Interpon 'Anodic Stellar Bronze Matt'. Glass colour- blue. Thermal performance to Facade Engineer's requirements.
- (CW4) Curtain Wall System 4: As per CW2. Full height glazing.
- (CW5) Curtain Wall System 5: As per CW2. Full height glazing to lobby.
- (CW6) Curtain Wall System 6: As per CW2, bay window.

- (DWS1) Decorative Stone Cladding System Type 1: Material and finish to future detail.
- (DWS2) Decorative Stone Cladding System Type 2: Material and finish to future detail.
- (FC1) Compressed Fibre Cement Soffit Type 1: Setout to future detail, expressed joints, colour tbc.
- (LV1) Louvre Type 1: Horizontal aluminium sunshade, variable depth, to Facade Engineer's specification. Integral to Curtain Wall System CW1. Finishes as per CW1.
- (LV2) Louvre Type 2: Aluminium louvre screen/door- powdercoat finish. Colour and finish equal to MC1.
- (LV3) Louvre Type 3: Retractable external blind. Powdercoat finish equal to LV2.
- (LV3) Louvre Type 4: Aluminium louvre screen/door- powdercoat finish. Colour and finish equal to MC5.
- (IDD) Interactive Digital Display subject to future detail, which is situated behind the glazing system and flush with the surrounding facade. The Digital Display is intended to be accessed from inside the building for maintenance and is remotely controlled.

- (MC1) Metal Cladding System Type 1: Cassette type metal cladding system. Finish and colour equal in appearance to Alpolic 'Medium Gray Metallic'.
- (MC2) Metal Cladding System Type 2: Decorative metal cladding system equal to preweathered Corten steel. Natural finish and colour.
- (MC3) Metal Cladding System Type 3: Metal cladding system equal to stainless steel. Natural finish and colour.
- (MC4) Metal Cladding System Type 4: Prefinished screen system with integrated louvre panels as required. 2 colours.
- (MC5) Metal Cladding System Type 5: Cassette type metal cladding system. Finish and colour equal in appearance to Interpon 'Anodic Stellar Bronze Matt'.
- (OFC1) Concrete Column Type 1. Off form concrete, smooth finish. Colour equal to 'Brite and Lite'.
- (AWN1) Potential Awning Type 1: Composite awning system steel frame, glazed roof and timber battens. Steel frame paint finish micaceous oxide 'bridge grey'. Timber equal to spotted gum, natural paint finish.
- (AWN2) Awning Type 2: Subject to future detail

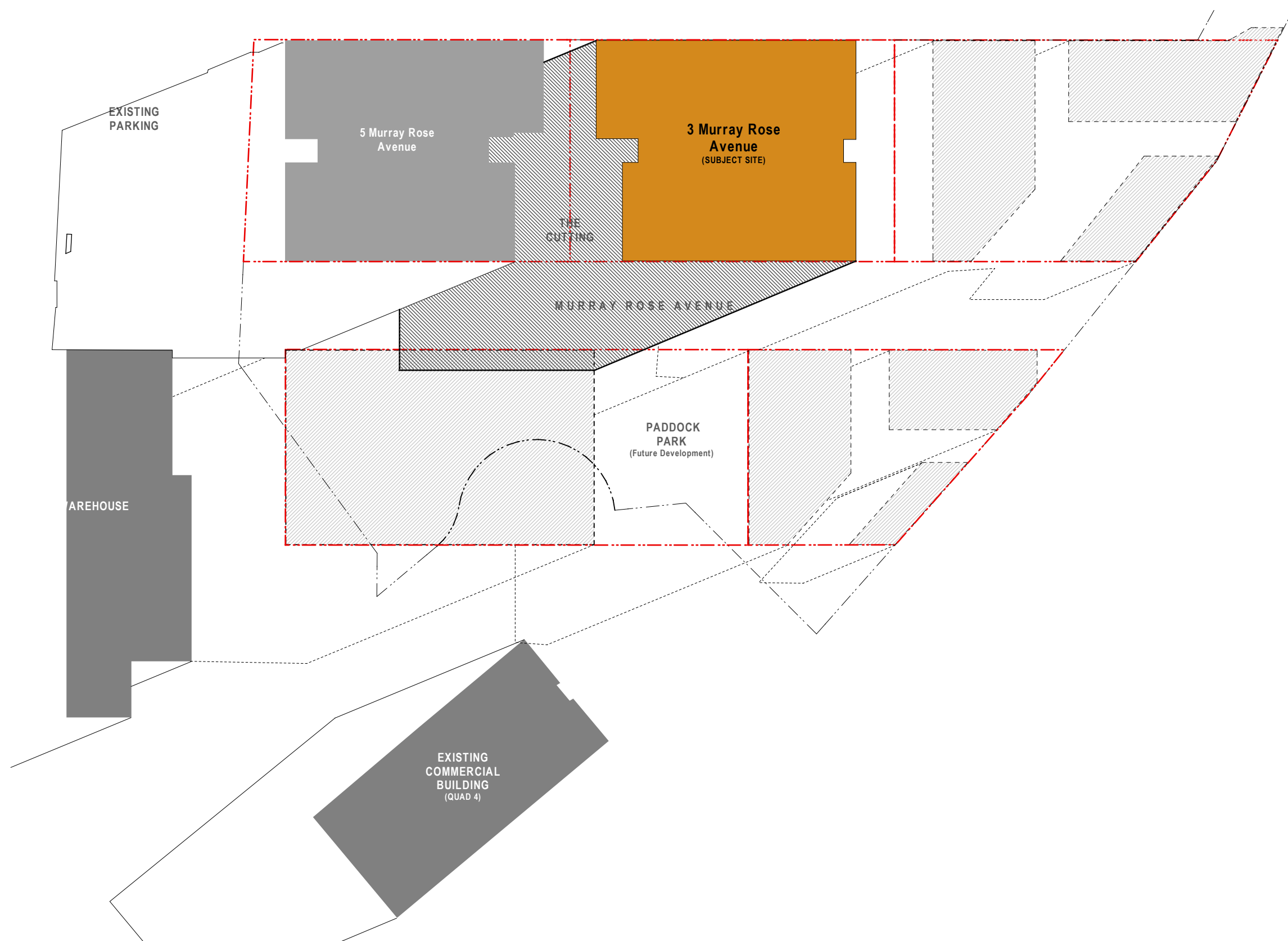


Materials + Finishes Schedule

- CW1a) Curtain Wall System Type 1a: Curtain wall system to Facade Engineer's specification. Aluminium frame- powdercoat finish. Colour equal to Interpon 'Anodic Stellar Bronze Matt'. Glass panels- Colours equal to blue, bronze, grey, clear, clear reflective. Thermal performance to Facade Engineer's requirements. Solid panels- Colours and finish equal in appearance to terracotta. Random distribution of panels in 5 colours. Colours equal to Moeding Alphonon 'Braun', 'Naturrot', 'Eisengrau', 'Blaugrau' and 'Perlgrau'.
- CW1b) Curtain Wall System Type 1b: Curtain wall system as per CW1a, including balcony glazing and sun shading system.
- CW1c) Curtain Wall System Type 1c: Curtain wall system as per CW1a, including sun shading system.
- CW2) Curtain Wall System Type 2: Curtain wall system to Facade Engineer's specification. Aluminium frame- powdercoat finish. Colour equal to Interpon 'Anodic Stellar Bronze Matt'. Glass colour- blue. Thermal performance to Facade Engineer's requirements.
- CW4) Curtain Wall System 4: As per CW2. Full height glazing.
- CW5) Curtain Wall System 5: As per CW2. Full height glazing to lobby.
- CW6) Curtain Wall System 6: As per CW2, bay window.

- DWS1) Decorative Stone Cladding System Type 1: Material and finish to future detail.
- DWS2) Decorative Stone Cladding System Type 2: Material and finish to future detail.
- FC1) Compressed Fibre Cement Soffit Type 1: Setout to future detail, expressed joints, colour tbc.
- LV1) Louvre Type 1: Horizontal aluminium sunshade, variable depth, to Facade Engineer's specification. Integral to Curtain Wall System CW1. Finishes as per CW1.
- LV2) Louvre Type 2: Aluminium louvre screen/door- powdercoat finish. Colour and finish equal to MC1.
- LV3) Louvre Type 3: Retractable external blind. Powdercoat finish equal to LV2.
- LV3) Louvre Type 4: Aluminium louvre screen/door- powdercoat finish. Colour and finish equal to MC5.
- IDD) Interactive Digital Display subject to future detail, which is situated behind the glazing system and flush with the surrounding facade. The Digital Display is intended to be accessed from inside the building for maintenance and is remotely controlled.

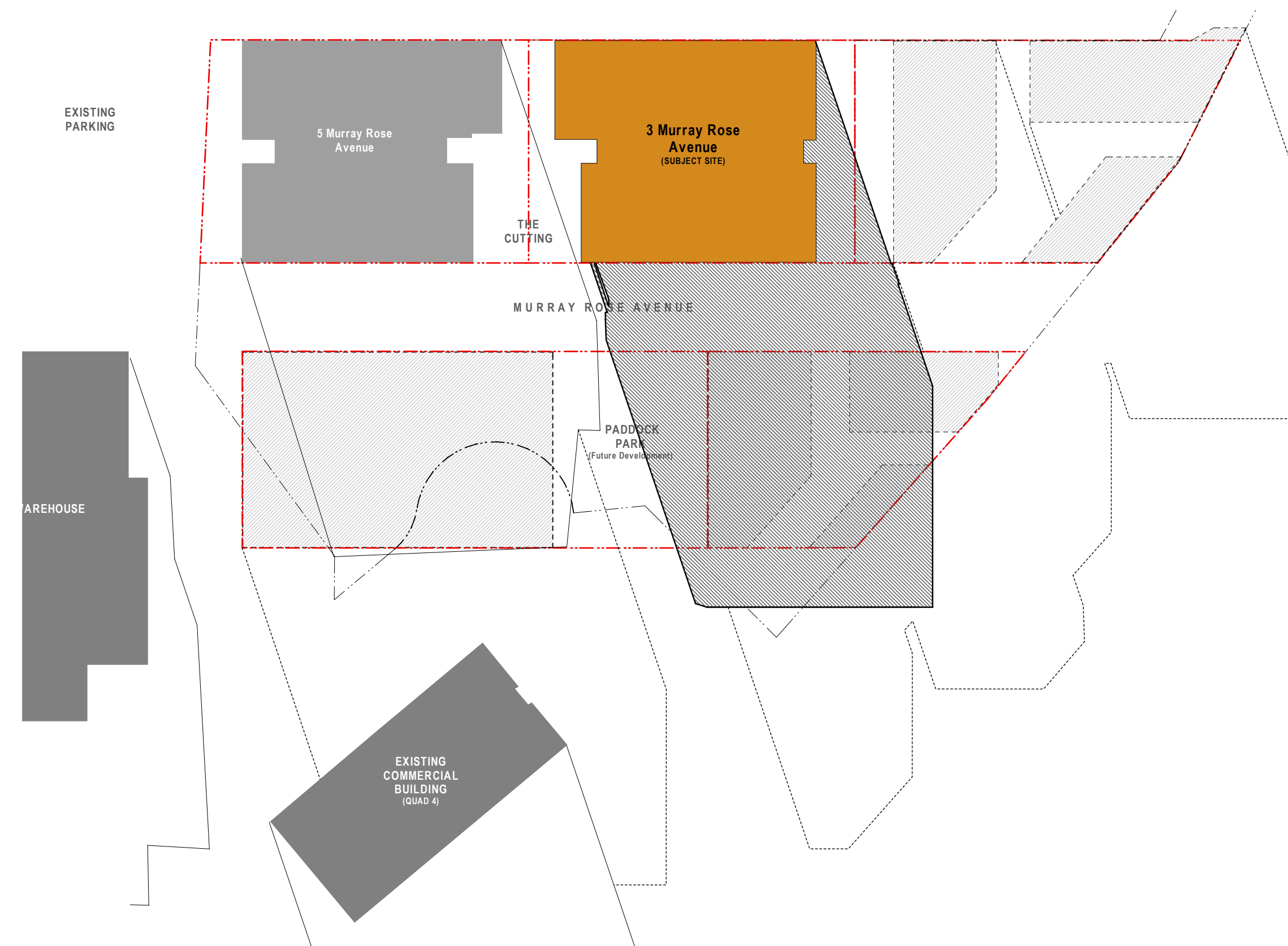
- MC1) Metal Cladding System Type 1: Cassette type metal cladding system. Finish and colour equal in appearance to Alpolic 'Medium Gray Metallic'.
- MC2) Metal Cladding System Type 2: Decorative metal cladding system equal to preweathered Corten steel. Natural finish and colour.
- MC3) Metal Cladding System Type 3: Metal cladding system equal to stainless steel. Natural finish and colour.
- MC4) Metal Cladding System Type 4: Prefinished screen system with integrated louvre panels as required. 2 colours.
- MC5) Metal Cladding System Type 5: Cassette type metal cladding system. Finish and colour equal in appearance to Interpon 'Anodic Stellar Bronze Matt'.
- OFC1) Concrete Column Type 1: Off form concrete, smooth finish. Colour equal to 'Brite and Lite'.
- AWN1) Potential Awning Type 1: Composite awning system steel frame, glazed roof and timber battens. Steel frame paint finish micaceous oxide 'bridge grey'. Timber equal to spotted gum, natural paint finish.
- AWN2) Awning Type 2: Subject to future detail



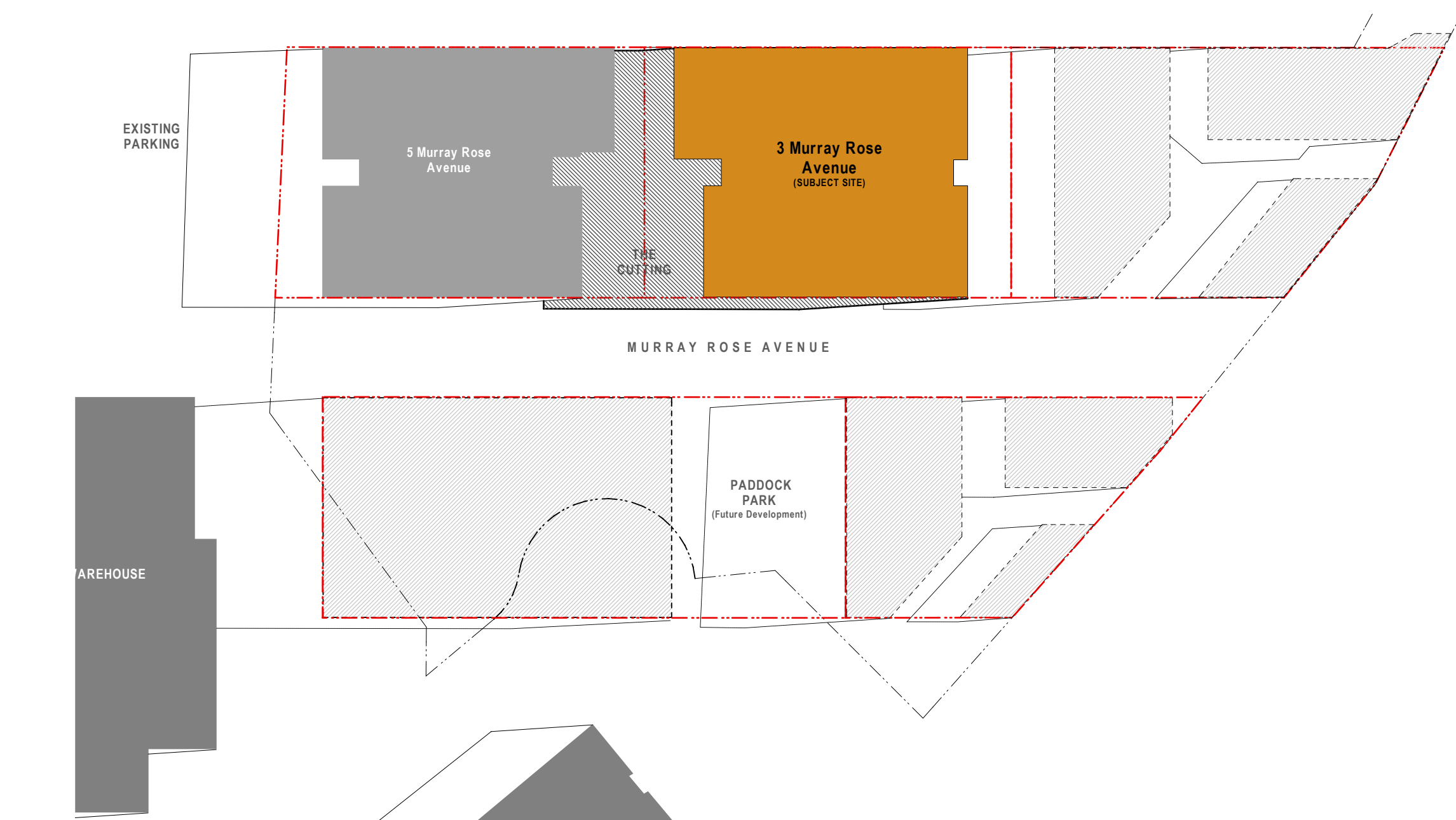
1 Winter Solstice 9am_MP
1:1000



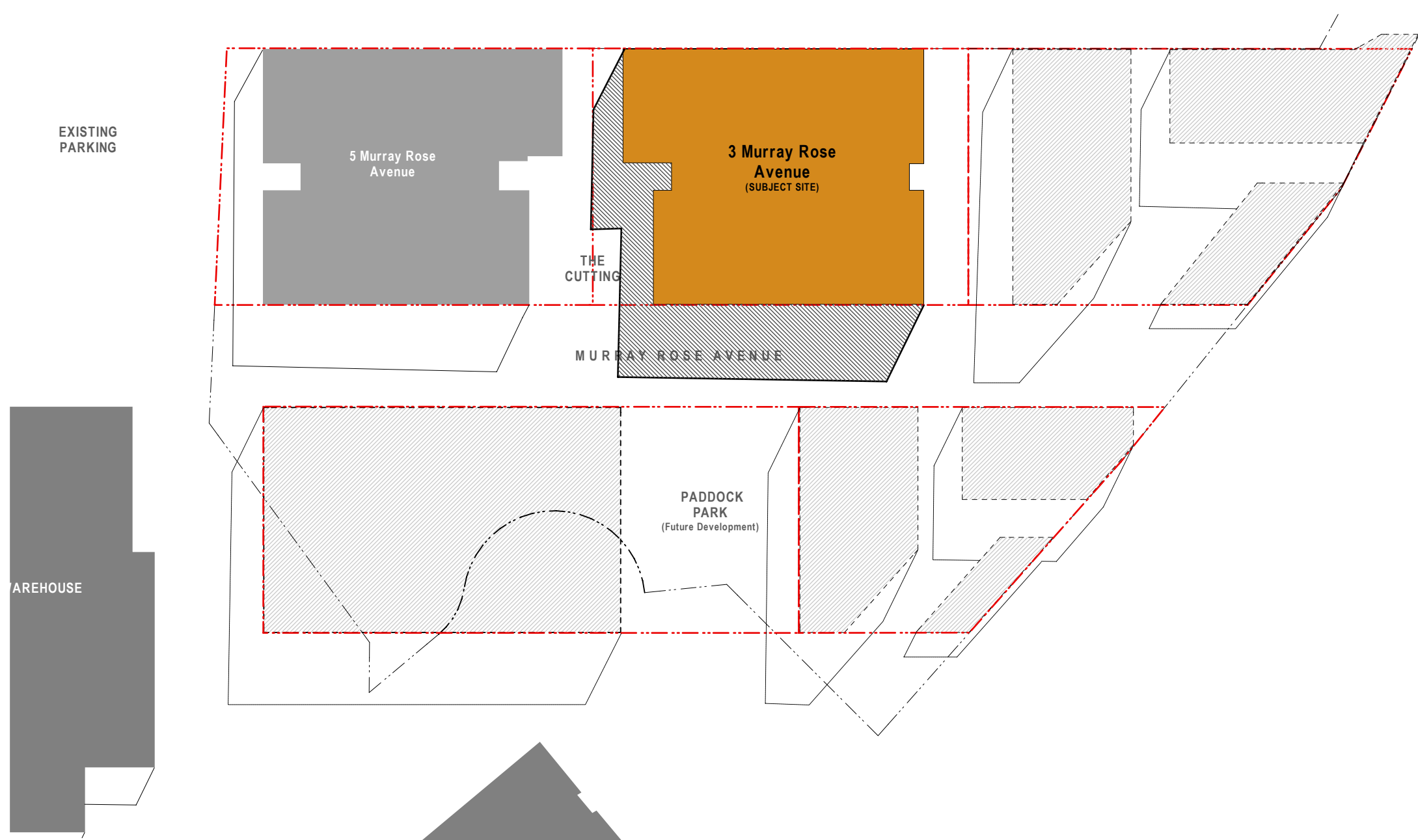
2 Winter Solstice 12pm_MP
1:1000



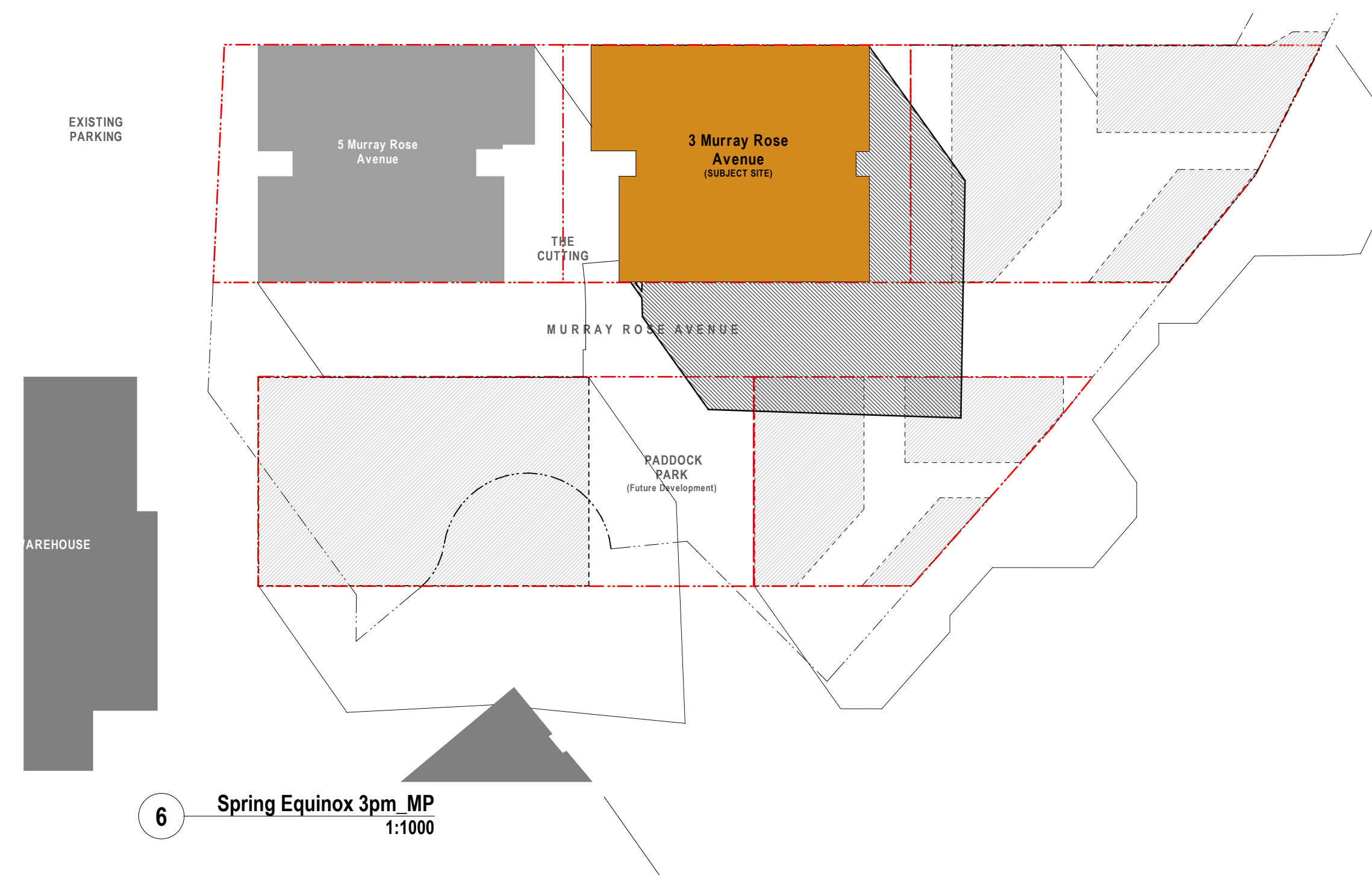
3 Winter Solstice 3pm_MP
1:1000



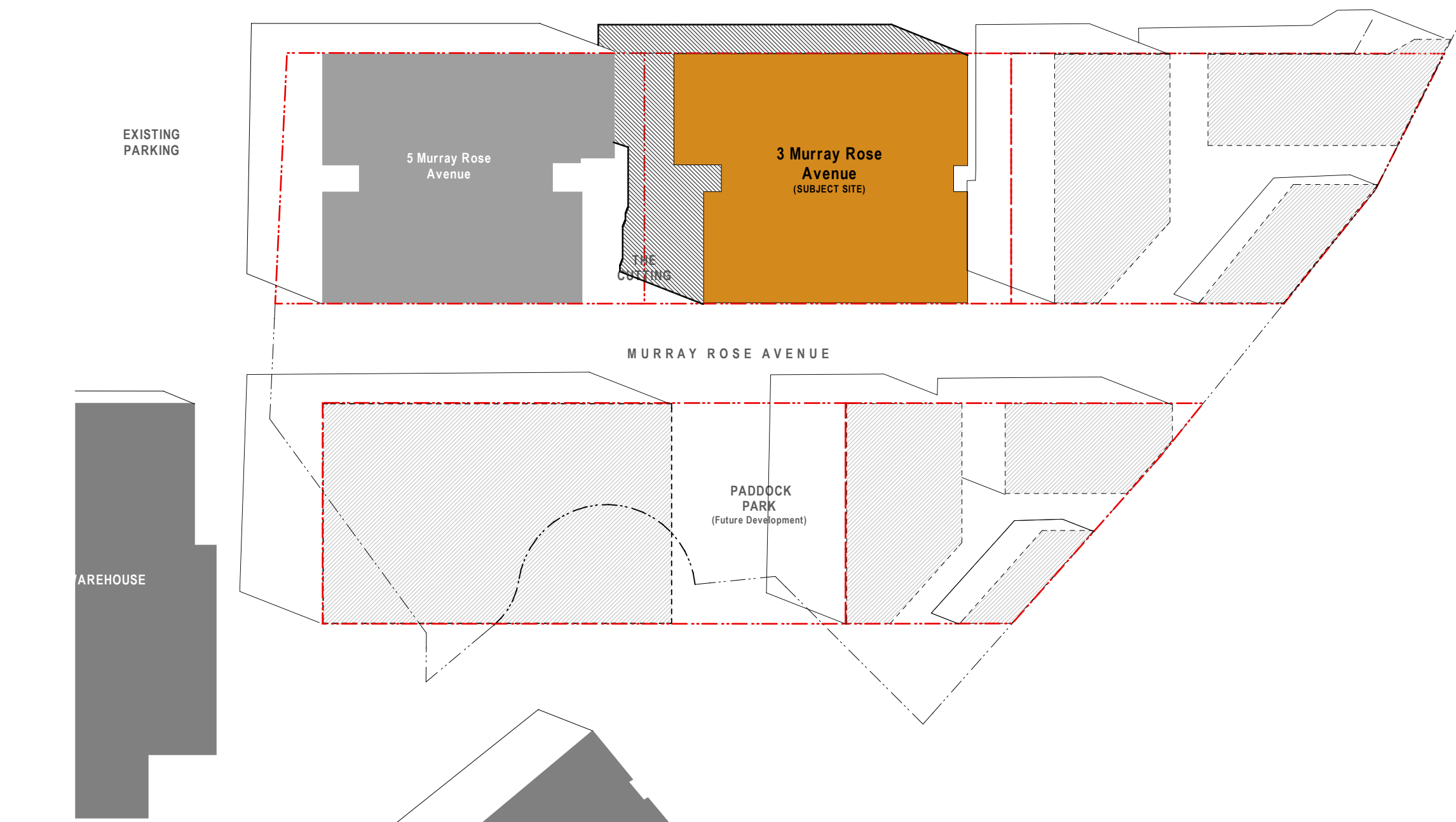
4 Spring Equinox 9am_MP
1:1000



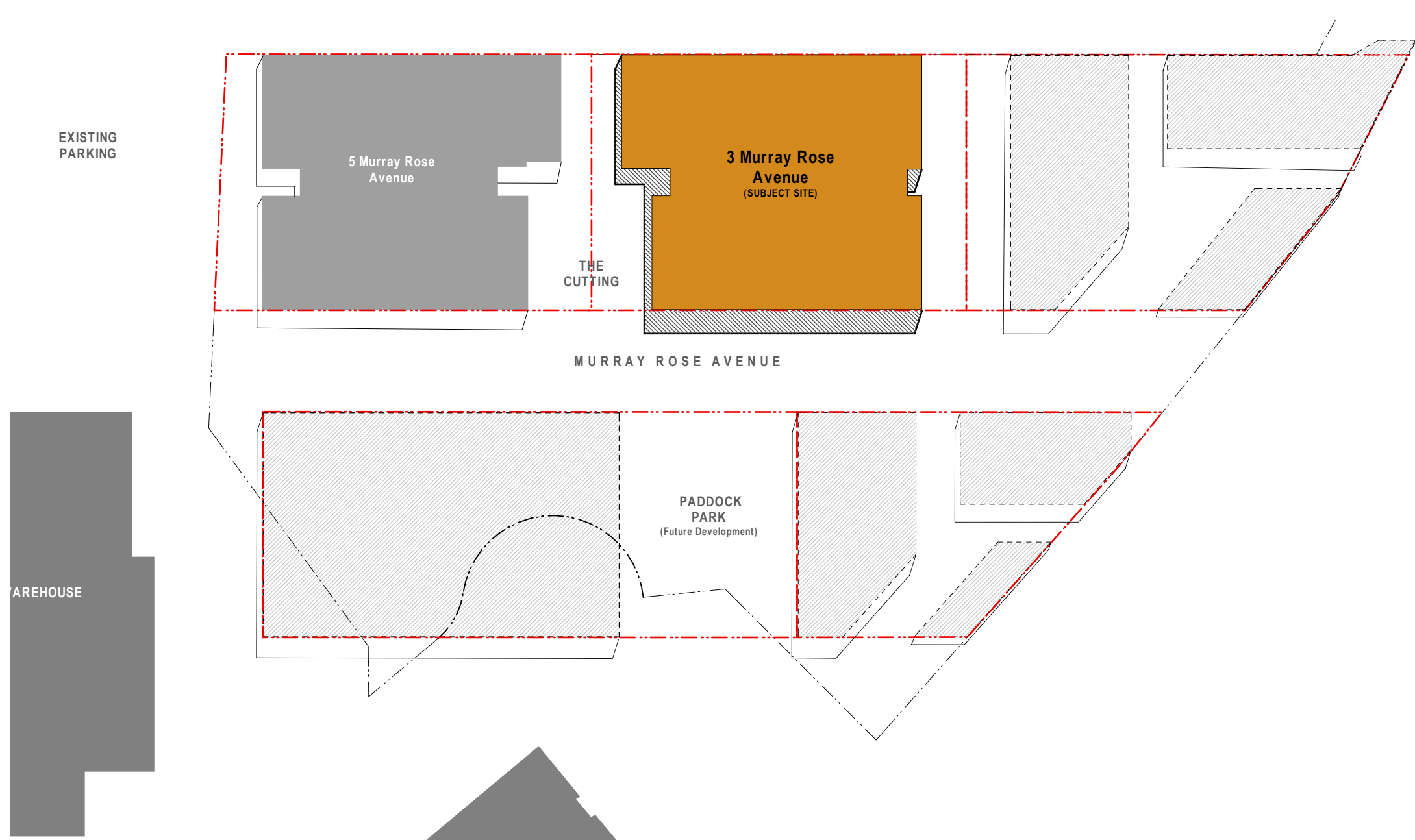
5 Spring Equinox 12pm_MP
1:1000



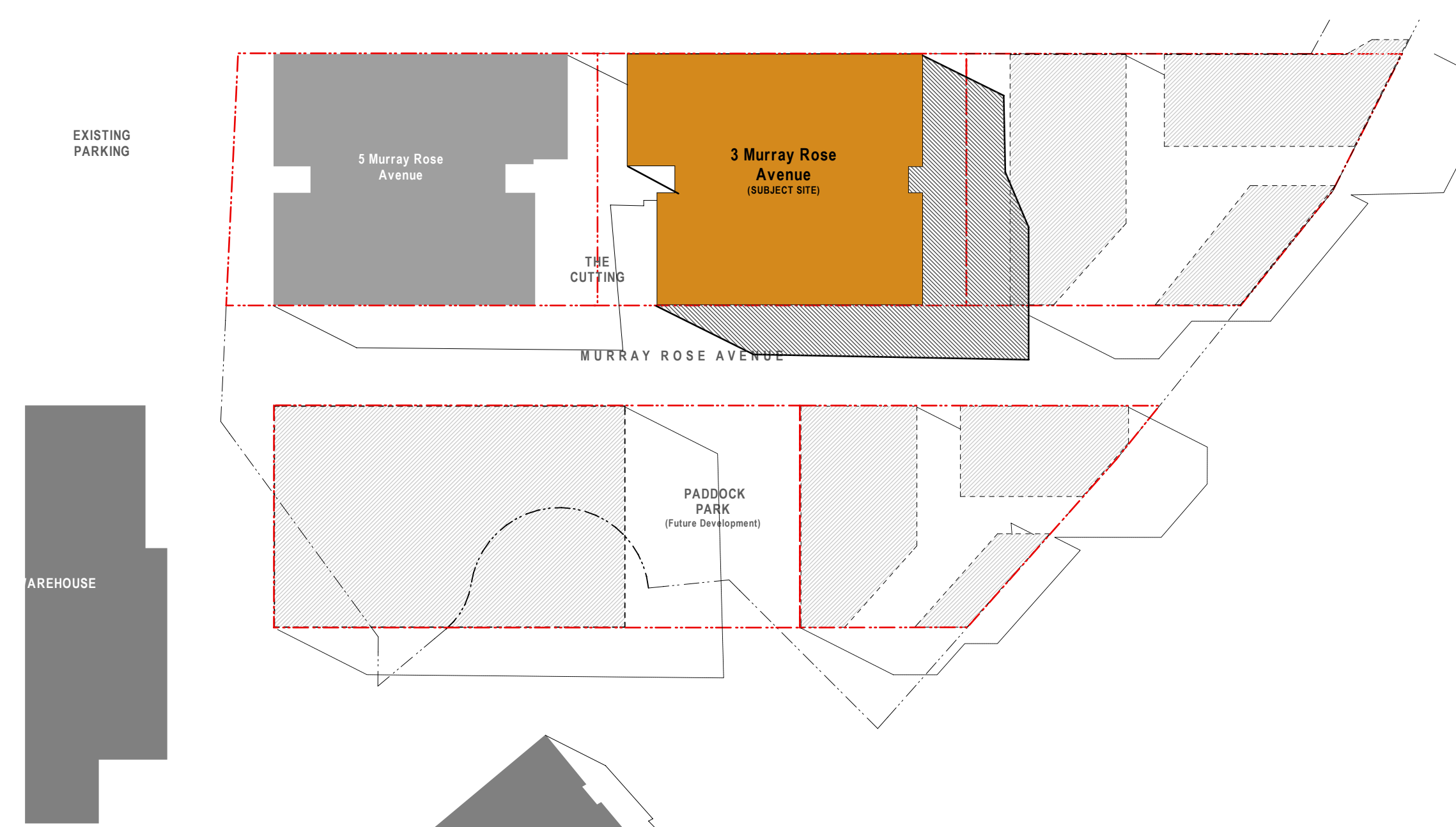
6 Spring Equinox 3pm_MP
1:1000



7 Summer Solstice 9am_MP
1:1000



8 Summer Solstice 12pm_MP
1:1000



9 Summer Solstice 3pm_MP
1:1000