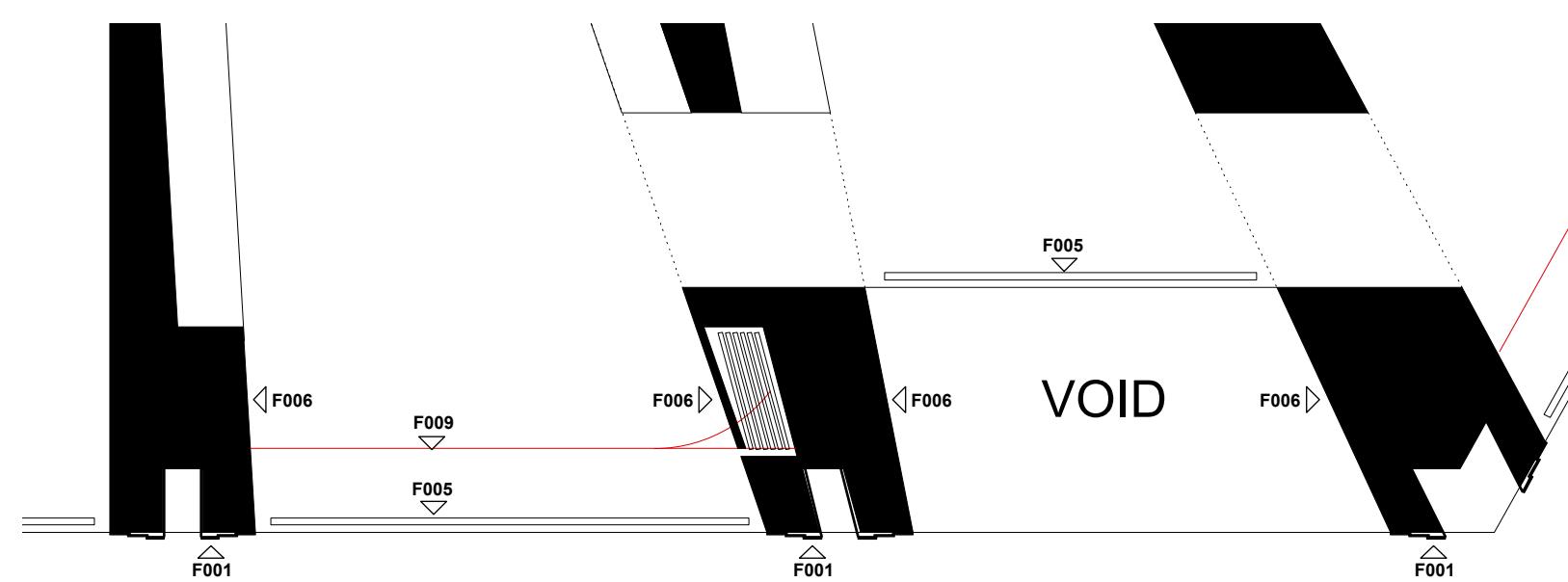
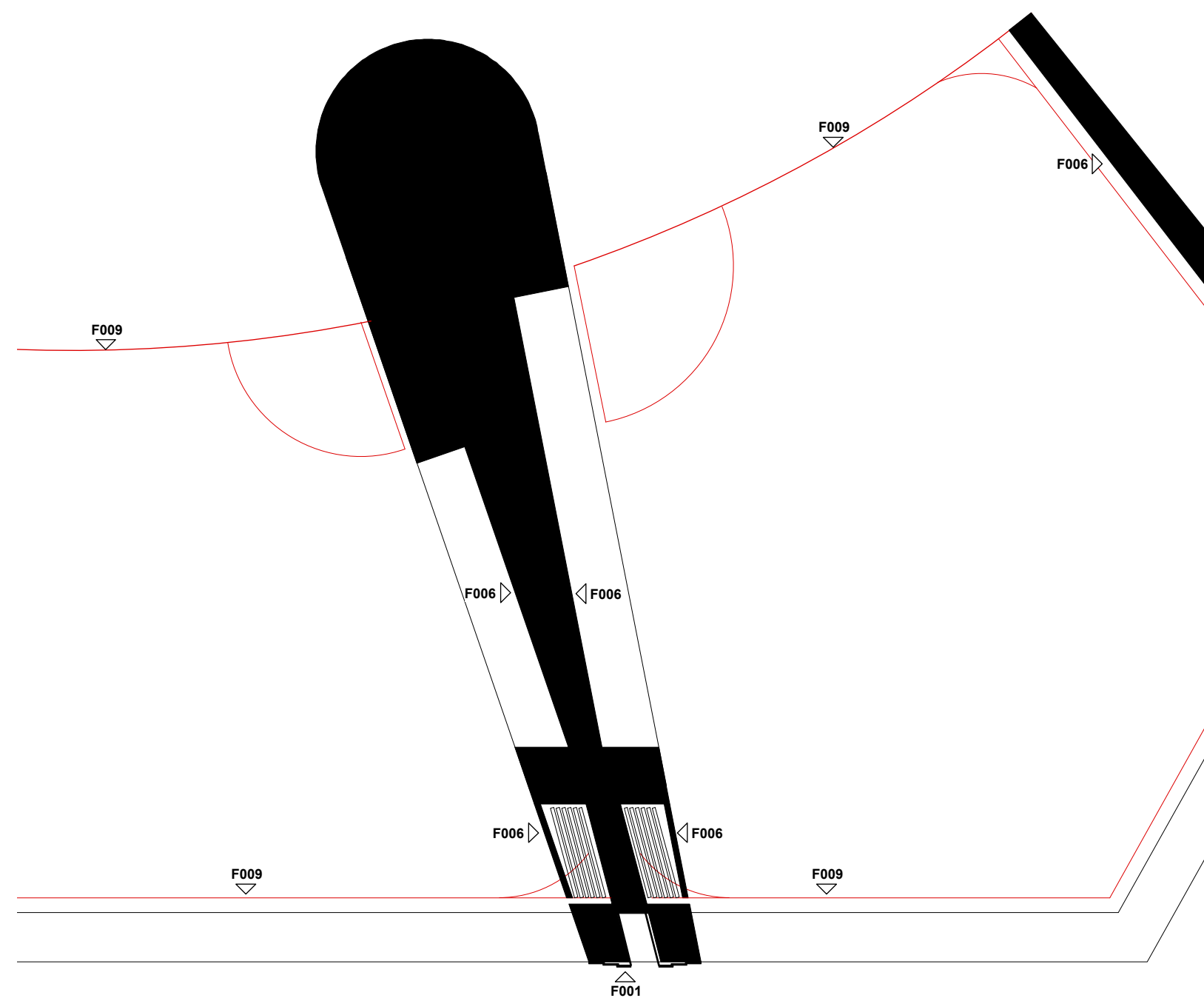


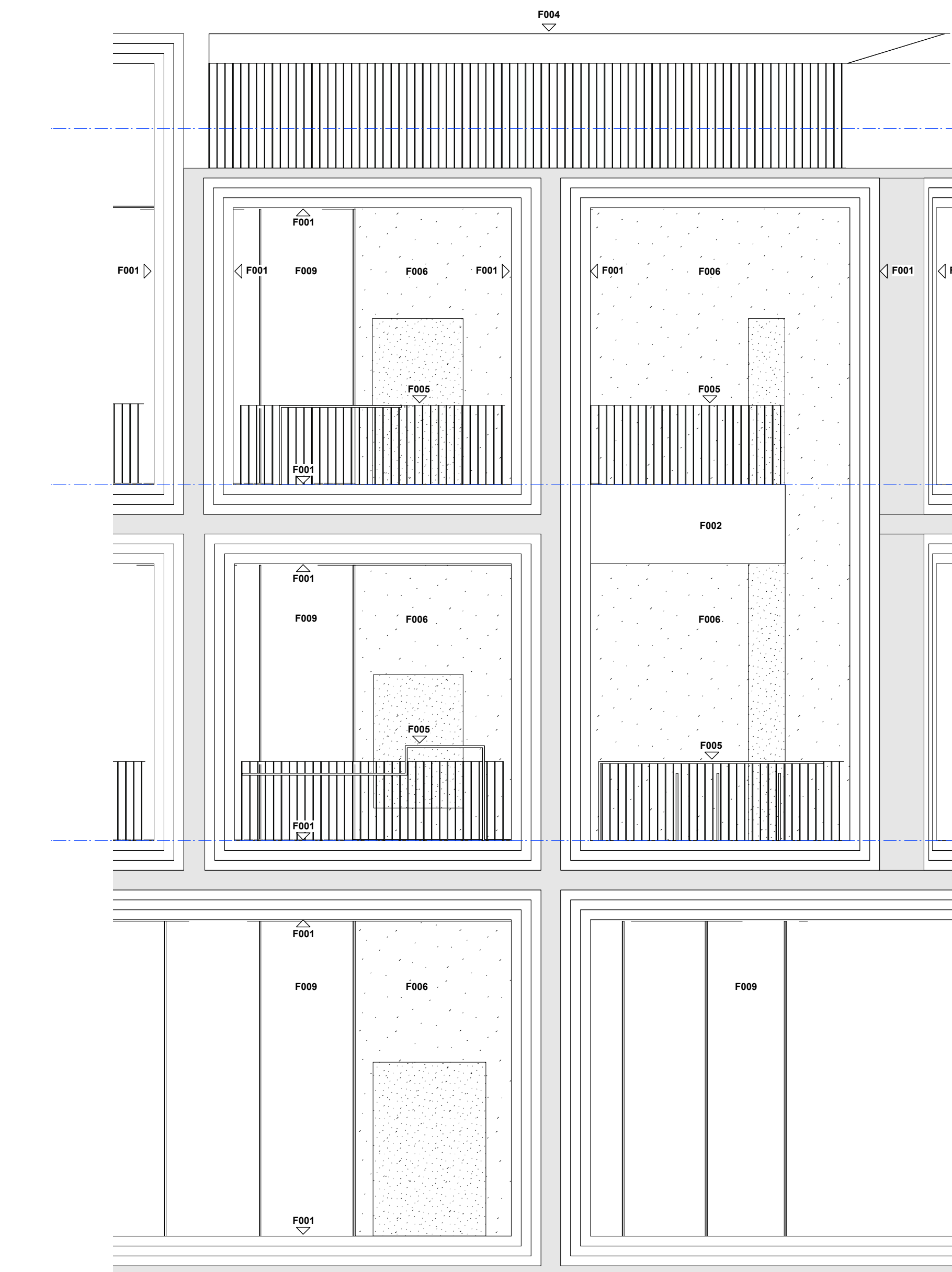
- | | |
|------|--|
| F001 | THICK GAUGE PROFILED STAINLESS STEEL END PLATE |
| F002 | PAINTED STEEL PLATE |
| F003 | AWNING FABRICATED FROM PAINTED STEEL PLATE WITH CUSTOM PERFORATIONS |
| F004 | CORNICE FABRICATED FROM PAINTED STEEL PLATE WITH CUSTOM PERFORATIONS |
| F005 | BAULSTRADE FABRICATED FROM PAINTED STEEL PLATE |
| F006 | EUIROMEX PATCH FINE 20% WARM GREY TO MATCH SAMPLE |
| F007 | QUARRIED STONE PAVERS SIMILAR COLOUR TO WALL FINISH. |
| F008 | GLASS WINDOWS WITH COMBINATION OF FIXED AND LOUVER OPERATION |
| F009 | GLASS FRAMELESS OPERABLE DOORS VARIOTECH II 150/50 |



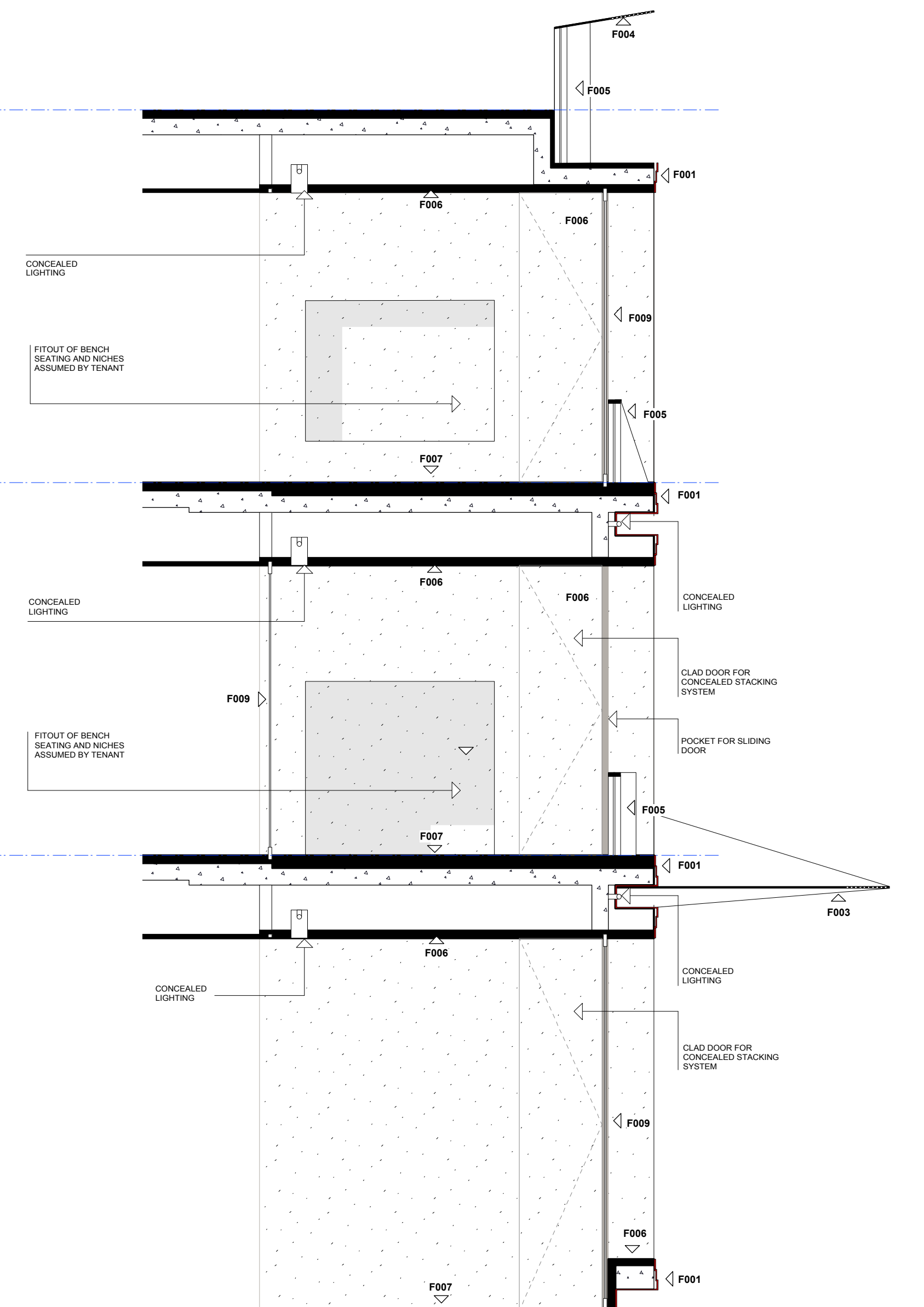
2 SECOND FLOOR DETAIL
1:50








1 GROUND FLOOR DETAIL
1:50



3 GLOBE STREET DETAIL ELEVATION
1:50



4 GLOBE STREET FACADE SECTION
1:50

Revision	Date	Description	Legal	Podium Facade Architect	Podium Facade Architect	Lead Architect	Collaborating Architect	Client	Site Address	Project	Drawn/Checked by	Drawing Title	Scale @ A1	Drawing Number		
-	24-02-2012	Amendments for Preferred Project Report	<p>Do not scale from drawing. The author of this drawing takes no responsibility for any dimensions obtained by measuring or scaling from this drawing and no reliance may be placed on such dimensions. If no dimension is given, it is the responsibility of the recipient to ascertain the dimension specifically from the author or by site measurement.</p> <p>The taking of all structural and serviceability models must always be checked against the relevant engineer's drawings. No reliance should be placed upon taking information shown on this drawing.</p> <p>© copyright, Rogers Silks Harcourt + Partners, all rights reserved 2010</p>	 <p>TONY CARO ARCHITECTURE PTY LTD LEVEL 12, 6 GLEN ST MILBURN POINT NSW 2081 SYDNEY AUSTRALIA 094601077 / 094601078 WWW.TONYCAROARCHITECTURE.COM.AU</p>	 <p>PTW NSW Nominated Architects: A. Andersons AO Architects No. 1 t: +612 9232 3837 f: +612 9221 3159</p>	 <p>RSH Australia Pty Limited Rohan Harboure Principal Architect RRAIA NSW ARB 4844 65-69 Kent St Millers Point NSW 2000 Sydney, Australia t: +61 2 9253 5655 f: +61 2 9253 5666 email: J61001@rsh-p.com www.rsh-p.com</p>	 <p>Lend Lease design t: +61 2 9236 6111 f: +61 2 9383 8133 www.bovislendlease.com</p>	 <p>Lend Lease t: +61 2 9236 6111 f: +61 2 9383 8133 www.bovislendlease.com</p>	Barangaroo South - C3	TCA	Detailed Bay Podium West	1:50	TCA-A-C3-7200-P-00			
										Drawing Purpose	Planning Application No: MP11 0044-PPR			Drawing Date	Revision Date	Revision
														24-02-2012	-	-