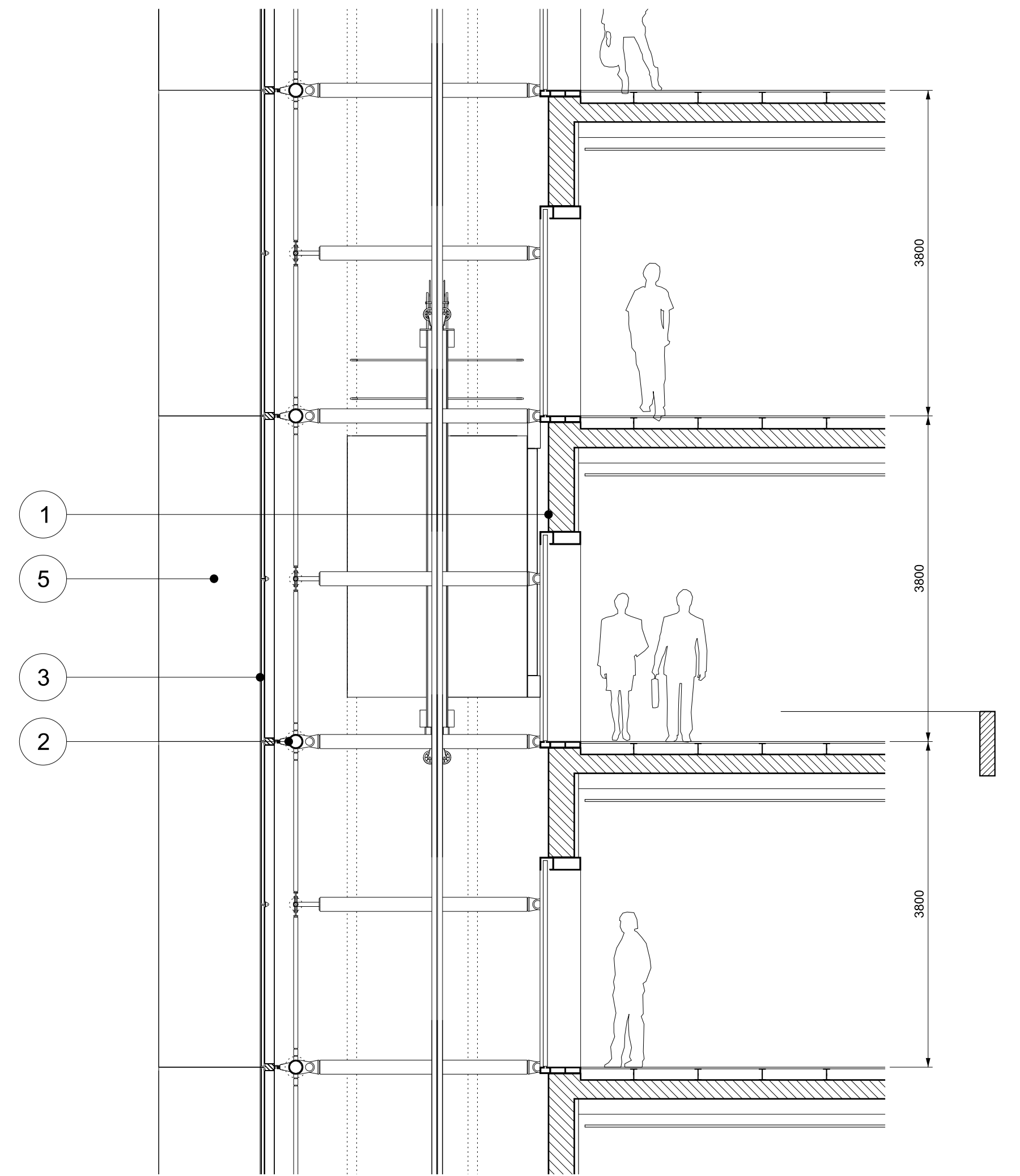
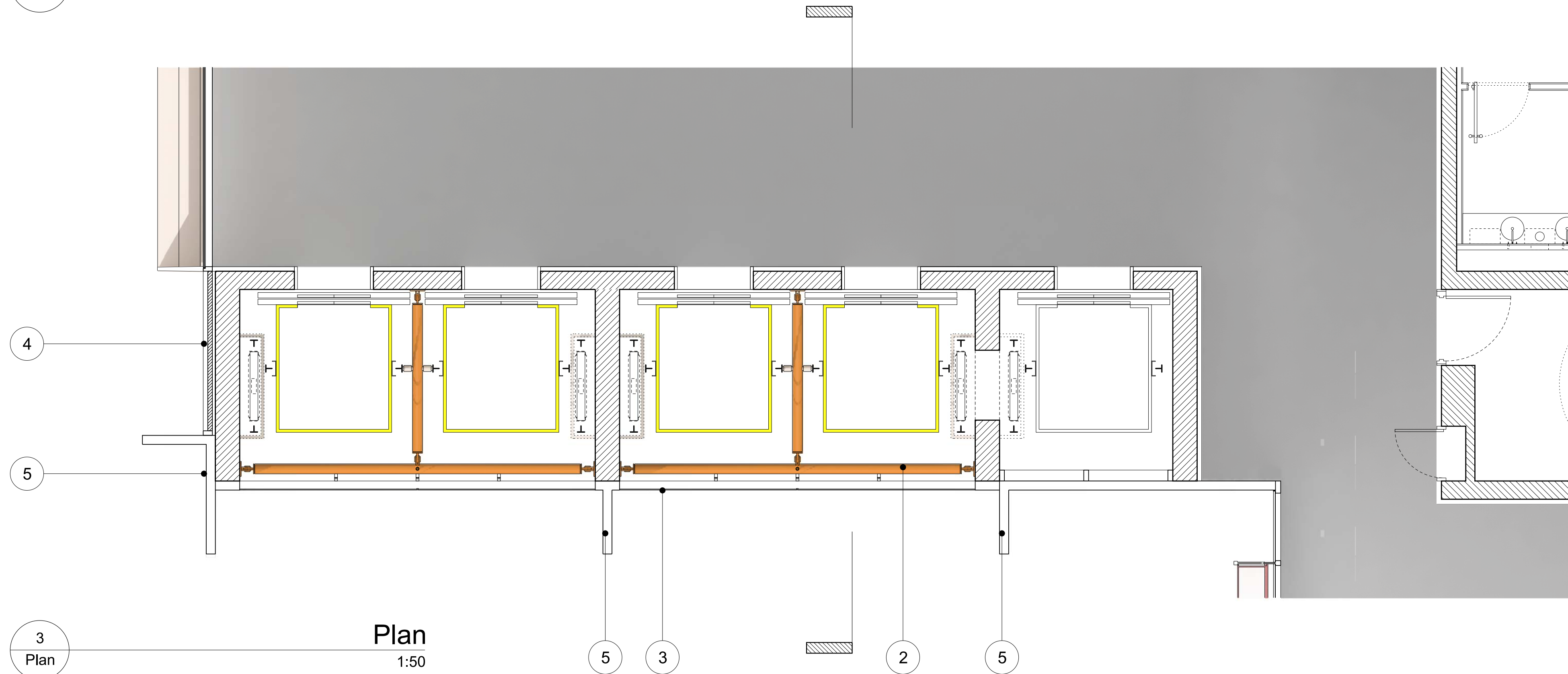


1 Elev  
Elevation  
1:50



2 Sec  
Section  
1:50



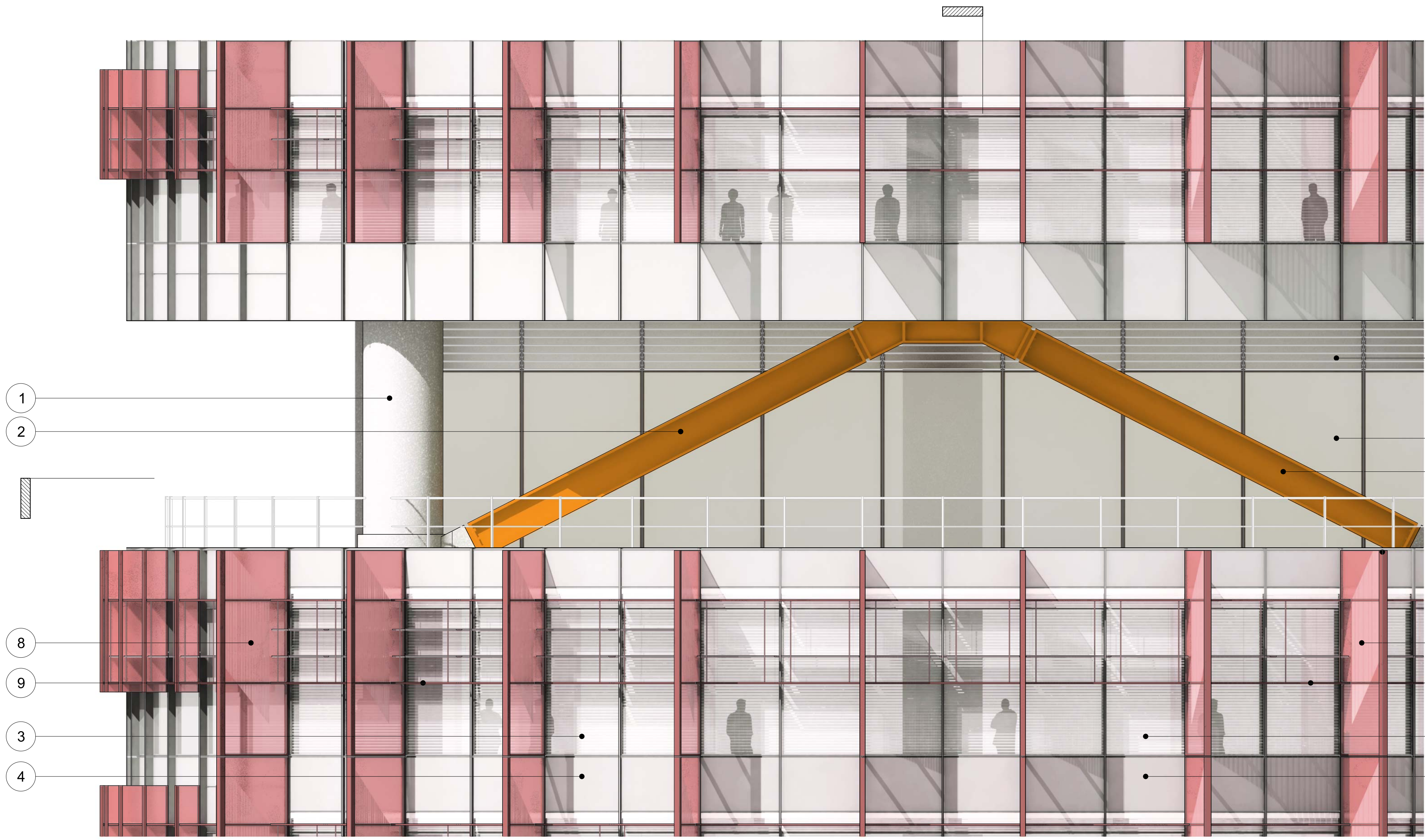
3 Plan  
Plan  
1:50

#### MATERIAL DESCRIPTION

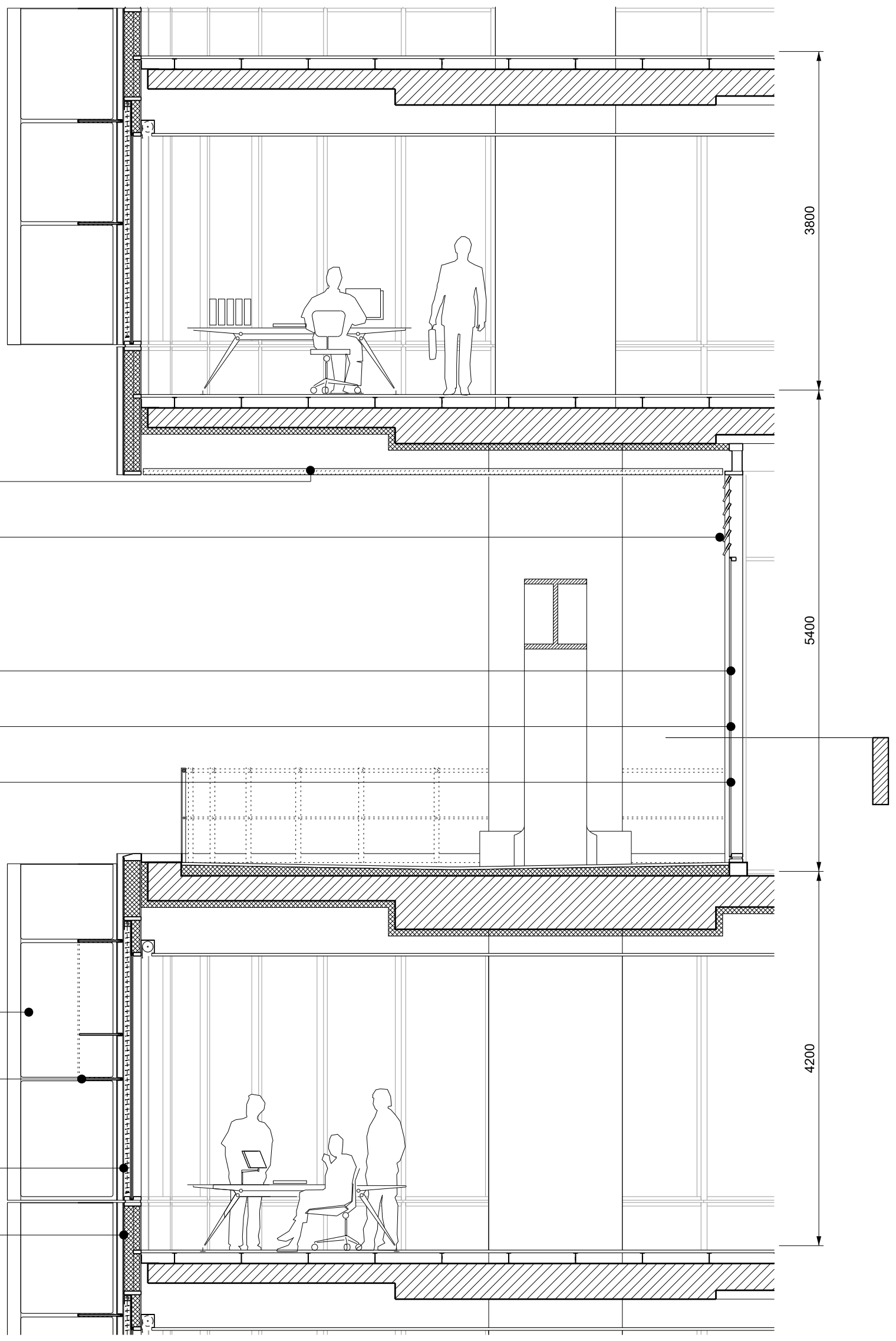
- |   |  |
|---|--|
| 1 - STRUCTURE<br>Primary structural concrete frame  | 5 - EXTERNAL ENVELOPE<br>Vertical aluminum fin   |
| 2 - STRUCTURE<br>Secondary steel structure to support lift guide rails, painted                               | 6 - BALUSTRADE<br>Clear glass balustrade with metal fixings                                    |
| 3 - EXTERNAL ENVELOPE<br>Clear vision glass within aluminium framing system fixed back to secondary structure | NOTE<br>Internal stairs are for illustrative purposes only and do not form part of application |
| 4 - EXTERNAL ENVELOPE<br>Composite aluminium cladding panel   |  |

Revision	Date	Description	Legal	Site Address	Lead Architect	Collaborating Architect	Client	Project	Drawn/Checked by	Drawing Title	Scale @ A1	Drawing Number
A	21-10-2011	Barangaroo South C3 Project Application MP11_0044	Do not scale from drawing. The author of this drawing takes no responsibility for any dimensions obtained by measuring or scaling from this drawing and no reliance may be placed on such dimensions. If no dimension is given, it is the responsibility of the recipient to ascertain the dimension specifically from the author or by the measurement. The sizing of all structural and service elements must always be checked against the relevant engineers' drawings. No reliance should be placed upon sizing information shown on this drawing. © copyright Rogers Stirk Harbour + Partners, all rights reserved 2010	Barangaroo Hickson Rd Millers Point NSW 2000 Sydney, Australia	Lead Architect <b>RSHP Australia Pty Limited</b> Ivan Harbour   Principal Architect   RAIA NSW ARB 8484 65-69 Kent St Millers Point NSW 2000 Sydney, Australia t: +61 2 9253 5655 f: +61 2 9253 5666 email: J6100@rsh-p.com www.rsh-p.com	Collaborating Architect <b>Lend Lease</b> design 30 The Bond 30 Hickson Rd Millers Point NSW 2000 Sydney, Australia t: +61 2 9236 6111 f: +61 2 9383 8133 www.bovislendlease.com	Client <b>Lend Lease</b> 30 The Bond 30 Hickson Rd Millers Point NSW 2000 Sydney, Australia t: +61 2 9236 6111 f: +61 2 9383 8133 www.bovislendlease.com	Project Barangaroo South - C3	MH/JS/YT	Detailed Bay Glazed Lift Facade	1:50	RSHP-A-C3-6100-D-W
Drawing Purpose Project Application: MP11_0044											Drawing Date 07-10-2011	Revision Date 21-10-2011
											Revision A	

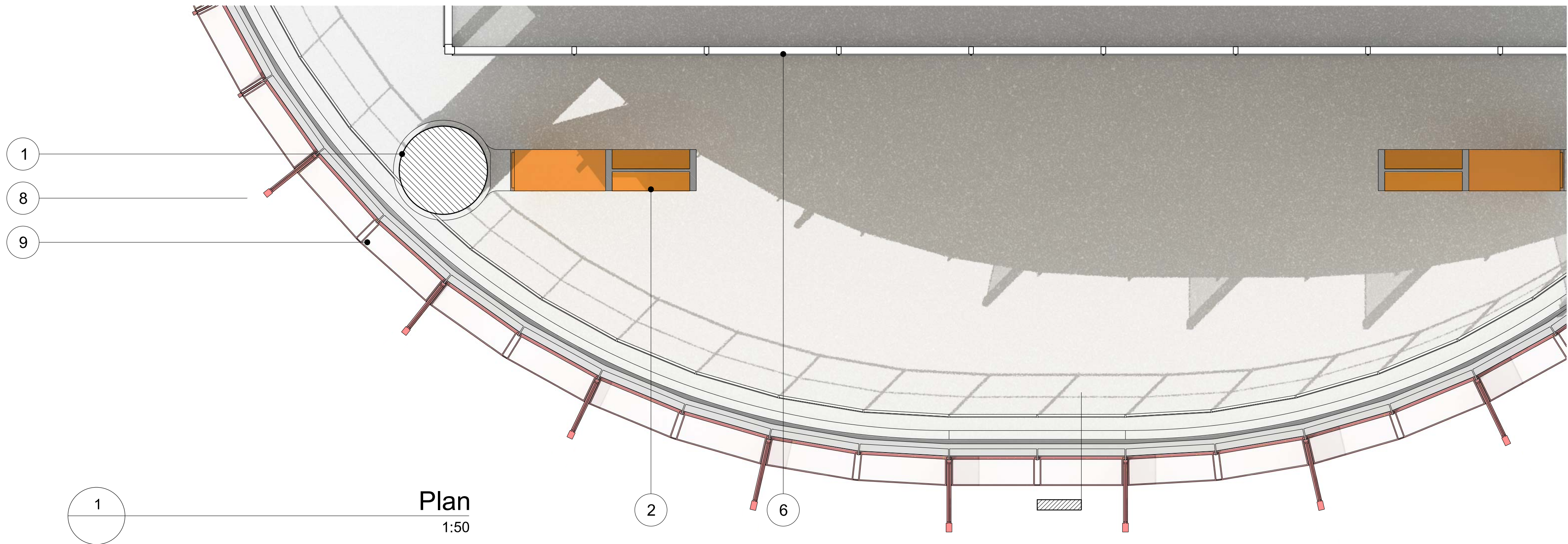




Elevation  
1:50



Section  
1:50



Plan  
1:50

MATERIAL DESCRIPTION

- |   |   |
|---|---|
| 1 - STRUCTURE<br>Primary structural concrete frame  | 6 - PLANT ENVELOPE<br>Clear vision glass within aluminium framing system  |
| 2 - STRUCTURE<br>Painted steel transfer structure   | 7 - PLANT ENVELOPE<br>Glazed ventilation louvres within aluminium framing system  |
| 3 - EXTERNAL ENVELOPE<br>Double glazed unit within aluminium curtainwall system with blind                  | 8 - SOLAR SHADING<br>Glazed vertical shading fin within sub-frame supported from curtainwall mullion with translucent and fritted sections to high level and spandrel zones |
| 4 - EXTERNAL ENVELOPE<br>Back-painted glass spandrel and upstand panels within aluminium curtainwall system | 9 - SOLAR SHADING<br>Fixed horizontal louvre supported from curtainwall mullion and vertical fin sub-frame  |
| 5 - EXTERNAL SOFFIT<br>Cementitious soffit panel supported on hidden sub-frame                              |   |

Revision	Date	Description
A	21-10-2011	Barangaroo South C3 Project Application MP11_0044

**Legal**  
Do not scale from drawing. The author of this drawing takes no responsibility for any dimensions obtained by measuring or scaling from this drawing and no reference may be placed on such dimensions. For dimension to given, it is the responsibility of the recipient to ascertain the dimension specifically from the author or by the measurement.  
The drawing of all structural and service elements must always be checked against the relevant engineering drawings. No reference should be placed upon this information shown on this drawing.  
© copyright Rogers Stirk Harbour + Partners, all rights reserved 2010

**Site Address**  
Barangaroo  
Hickson Rd  
Millers Point NSW 2000  
Sydney, Australia

**Lead Architect**  
**RSHP Australia Pty Limited**  
Ivan Harbour | Principal Architect | RAIA NSW ARB 8484  
65-69 Kent St  
Millers Point  
NSW 2000  
Sydney, Australia  
t: +61 2 9253 6111  
f: +61 2 9253 6666  
email: J6100@rsh-p.com  
www.rsh-p.com

**Collaborating Architect**  
**Lend Lease**  
design  
30 The Bond  
30 Hickson Rd  
Millers Point NSW 2000  
Sydney, Australia  
t: +61 2 9236 6111  
f: +61 2 9383 8133  
www.bovislendlease.com

**Client**  
**Lend Lease**  
30 The Bond  
30 Hickson Rd  
Millers Point NSW 2000  
Sydney, Australia  
t: +61 2 9236 6111  
f: +61 2 9383 8133  
www.bovislendlease.com

**Project**  
Barangaroo South - C3  
**Drawing Purpose**  
Project Application: MP11\_0044

**Drawn/Checked by**  
JS/YT

**Drawing Title**  
Detailed Bay  
Structural Brace  
Plant Level

**Scale @ A1**  
1:50

**Drawing Date**  
07-10-2011

**Drawing Number**  
RSHP-A-C3-6110-W

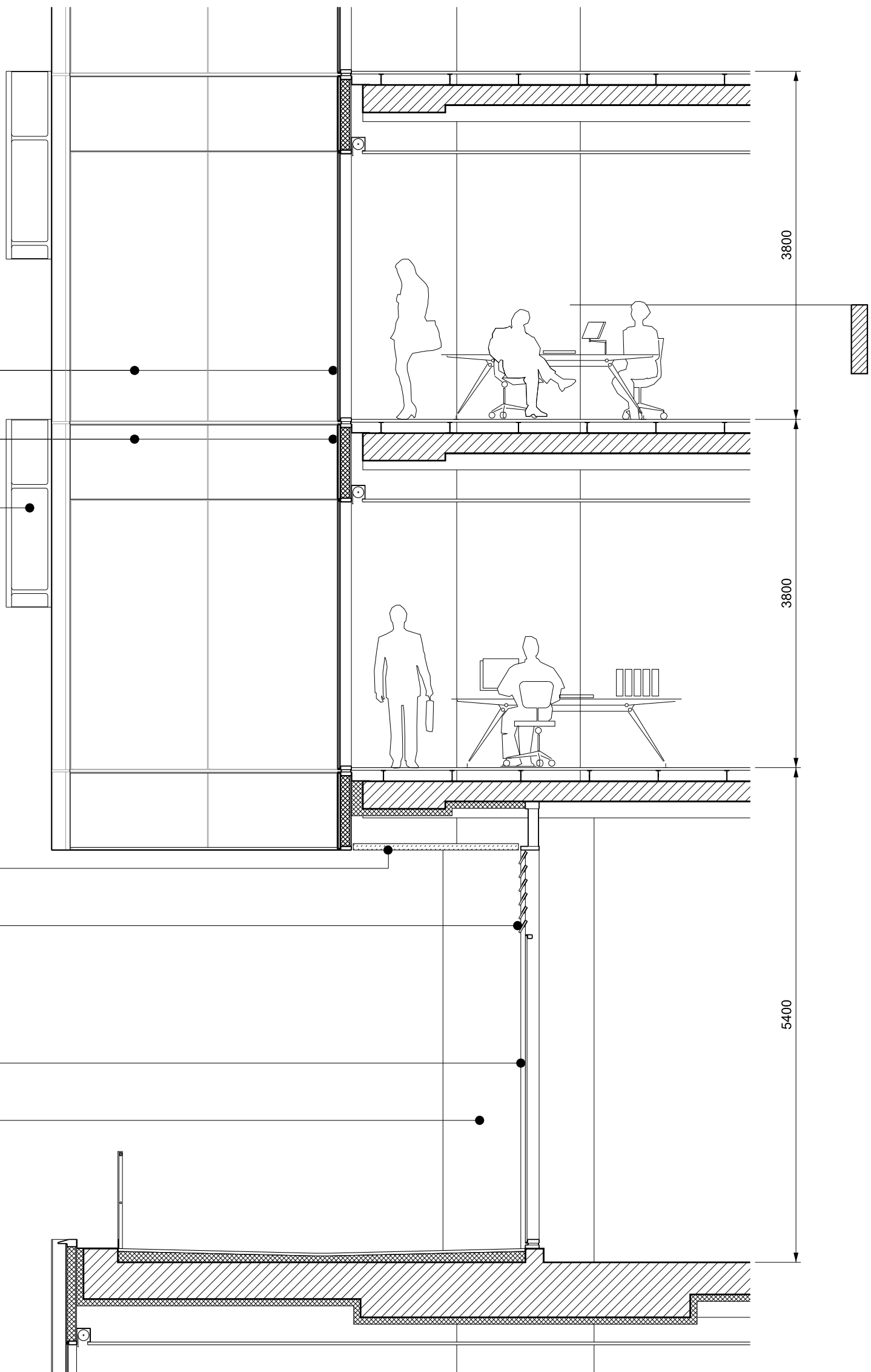
**Revision Date**  
21-10-2011

**Revision**  
A

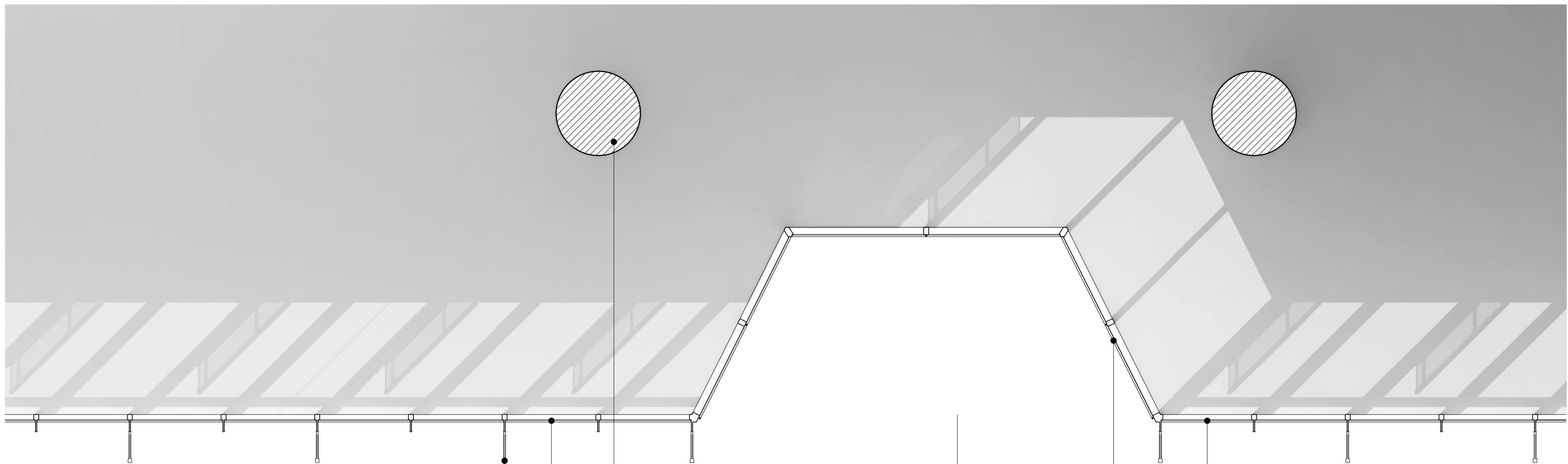




Elevation  
1:50



Section  
1:50

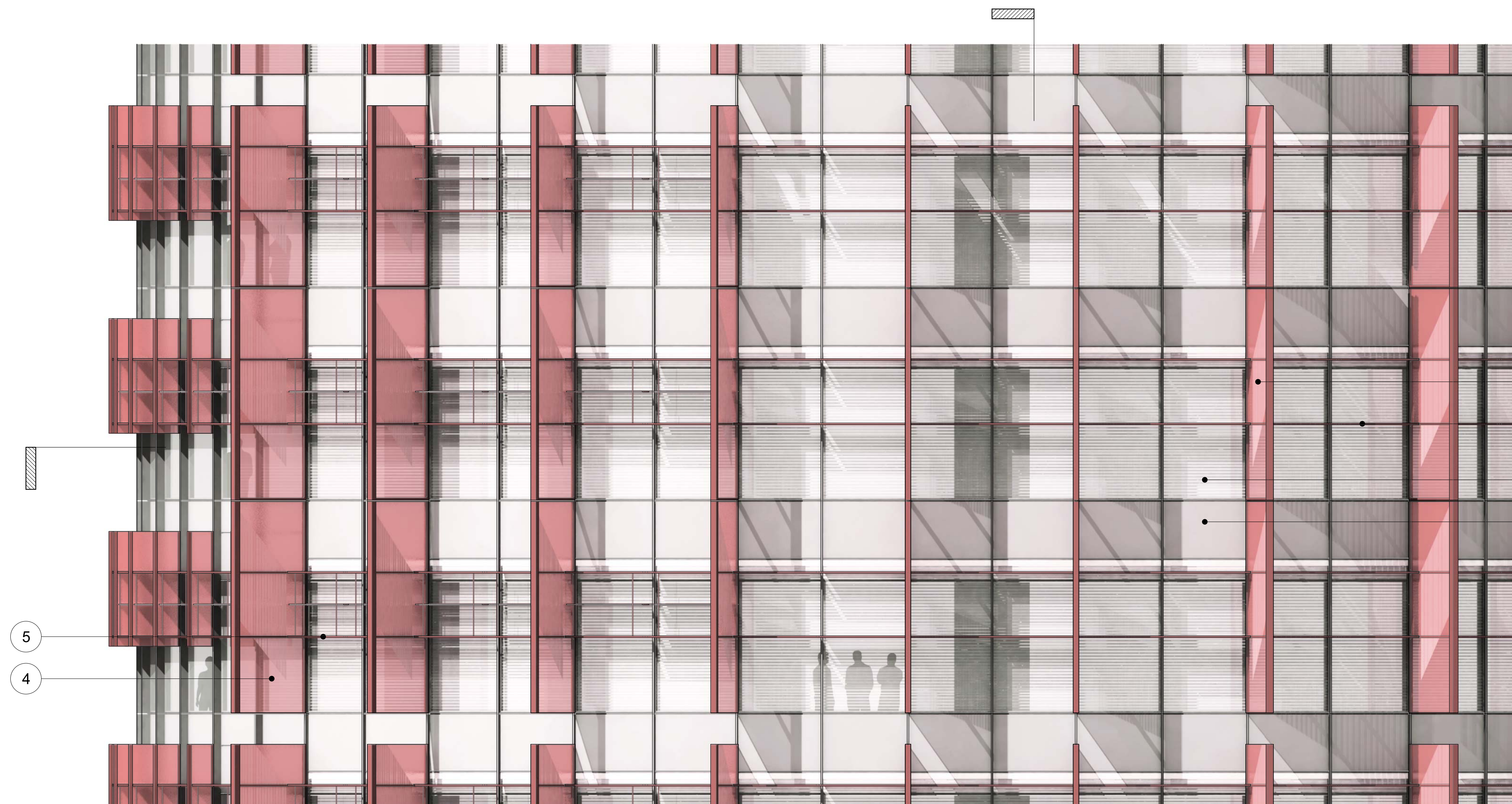


Plan  
1:50

- MATERIAL DESCRIPTION**
- 1 - STRUCTURE  
Primary structural concrete frame
  - 2 - EXTERNAL ENVELOPE  
Double glazed unit within aluminium curtainwall system
  - 3 - EXTERNAL ENVELOPE  
Back-painted glass spandrel and upstand panels within aluminium curtainwall system
  - 4 - SOUTH CUT  
Double glazed unit within aluminium curtainwall system
  - 5 - SOUTH CUT  
Cementitious spandrel panel within aluminium curtainwall system
  - 6 - EXTERNAL SOFFIT  
Cementitious soffit panel supported on hidden sub-frame
  - 7 - PLANT ENVELOPE  
Clear vision glass within aluminium framing system
  - 8 - PLANT ENVELOPE  
Glazed ventilation louvres within aluminium framing system
  - 9 - SOLAR SHADING  
Glazed vertical shading fin within sub-frame supported from curtainwall mullion with translucent and fritted sections to high level and spandrel zones

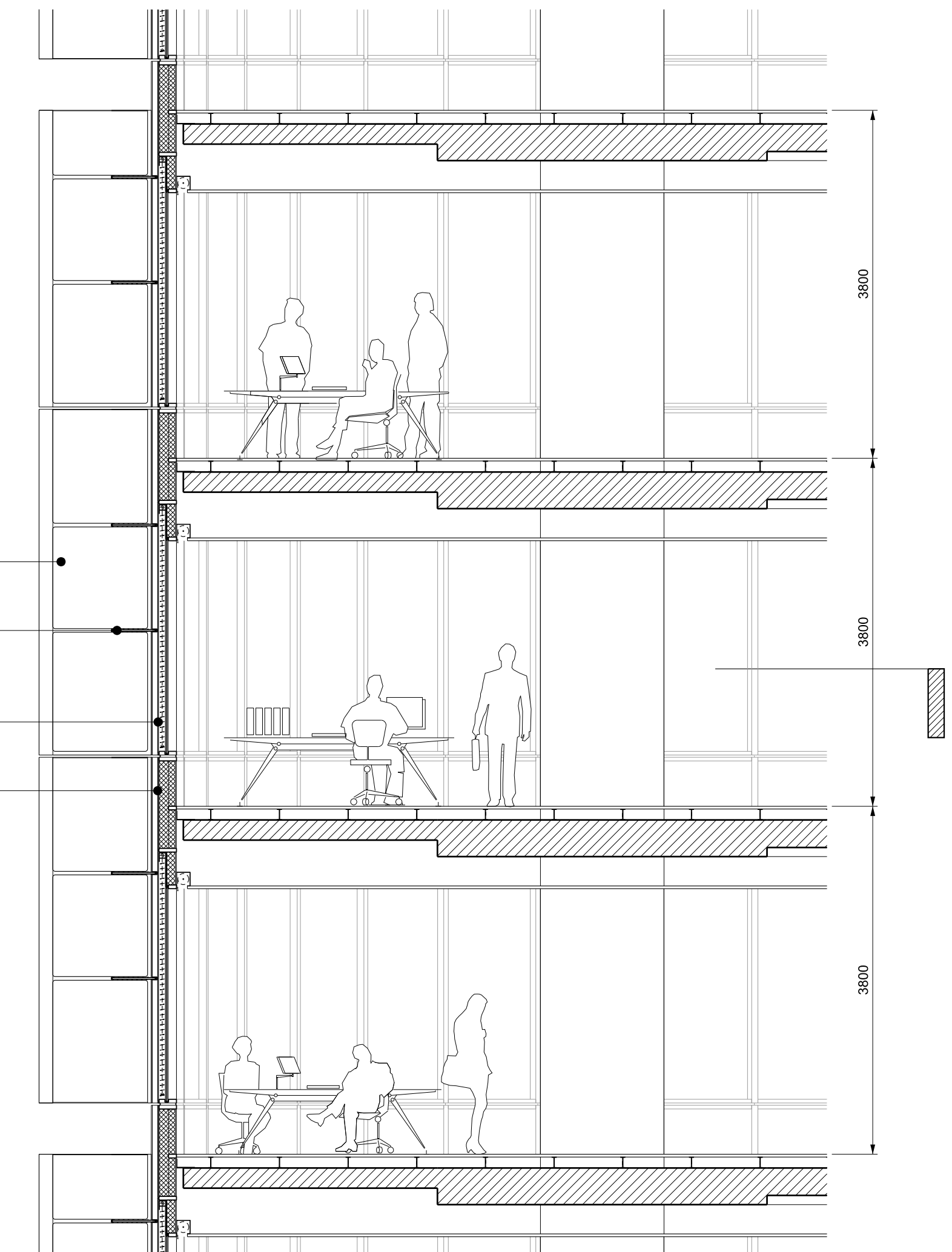
Revision	Date	Description	Legal	Site Address	Lead Architect	Collaborating Architect	Client	Project	Drawn/Checked by	Drawing Title	Scale @ A1	Drawing Number
A	21-10-2011	Barangaroo South C3 Project Application MP11_0044	Do not scale from drawing. The author of this drawing takes no responsibility for any dimensions obtained by measuring or scaling from this drawing and no reliance may be placed on such dimensions. If no dimension is given, it is the responsibility of the recipient to ascertain the dimension specifically from the author or by the measurement. The design of all structural and service elements must always be checked against the relevant engineer's drawings. No reliance should be placed upon design information shown on this drawing. © copyright Rogers Stirk Harbour + Partners, all rights reserved 2010	Barangaroo Hickson Rd Millers Point NSW 2000 Sydney, Australia	<b>RSHP Australia Pty Limited</b> Ivan Harbour   Principal Architect   RAIA NSW ARB 8484 65-69 Kent St Millers Point NSW 2000 Sydney, Australia t: +61 2 9253 5655 f: +61 2 9253 5666 email: J6100@rsh-p.com www.rsh-p.com	30 The Bond 30 Hickson Rd Millers Point NSW 2000 Sydney, Australia www.bovislendlease.com	30 The Bond 30 Hickson Rd Millers Point NSW 2000 Sydney, Australia www.bovislendlease.com	Barangaroo South - C3	JS/YT	Detailed Bay Typical South Facade Office Floor + Plant Level	1:50	RSHP-A-C3-6120-S
Project Application: MP11_0044											Drawing Date	Revision Date
											07-10-2011	21-10-2011
											Revision	
											A	





## Elevation

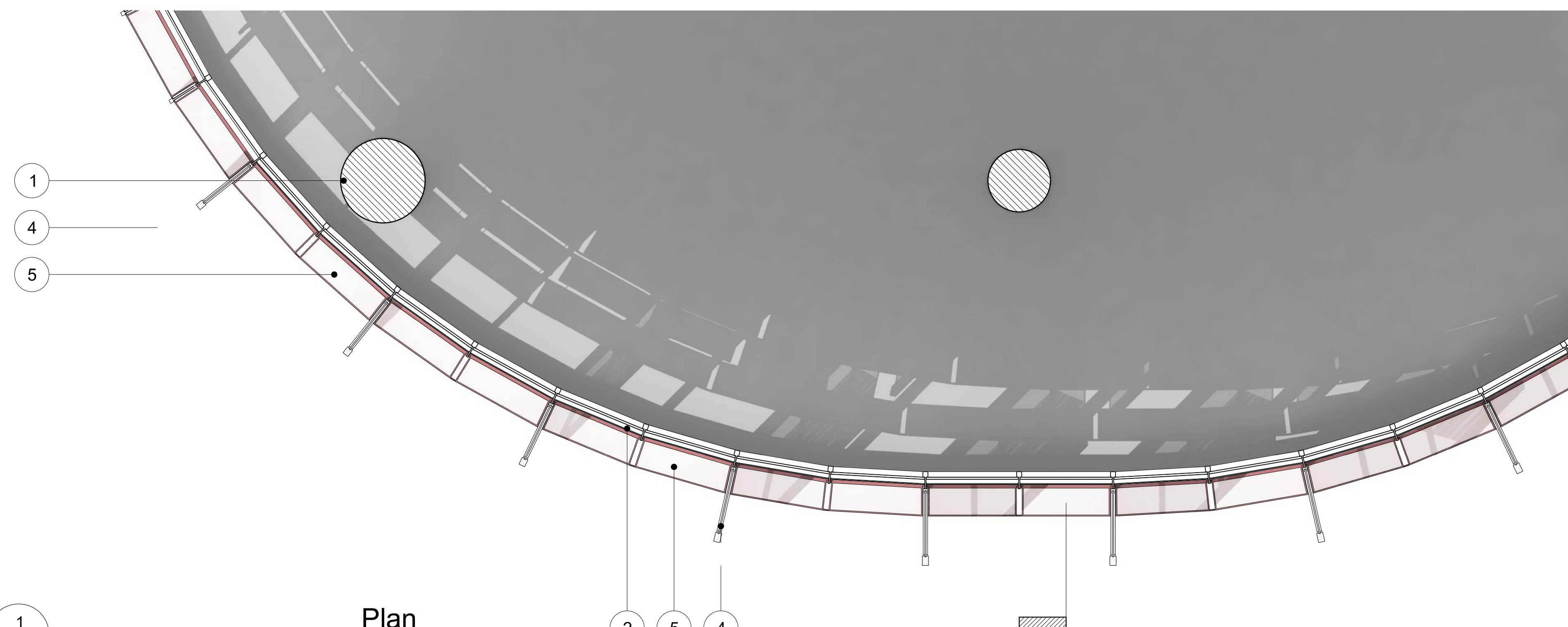
---

1:50

## Section

---

1:50



## Plan

---

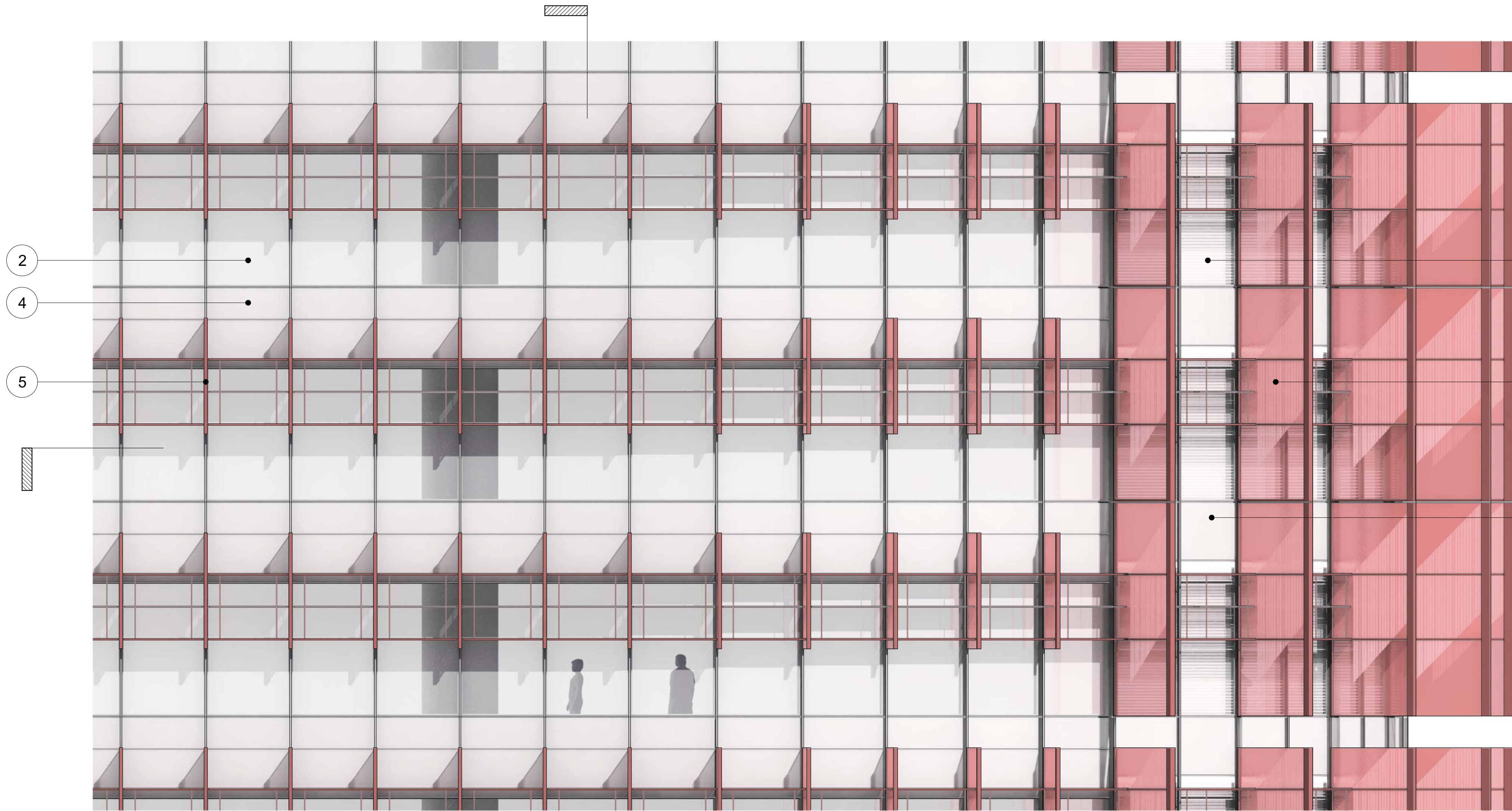
1:50

- ## MATERIAL DESCRIPTION

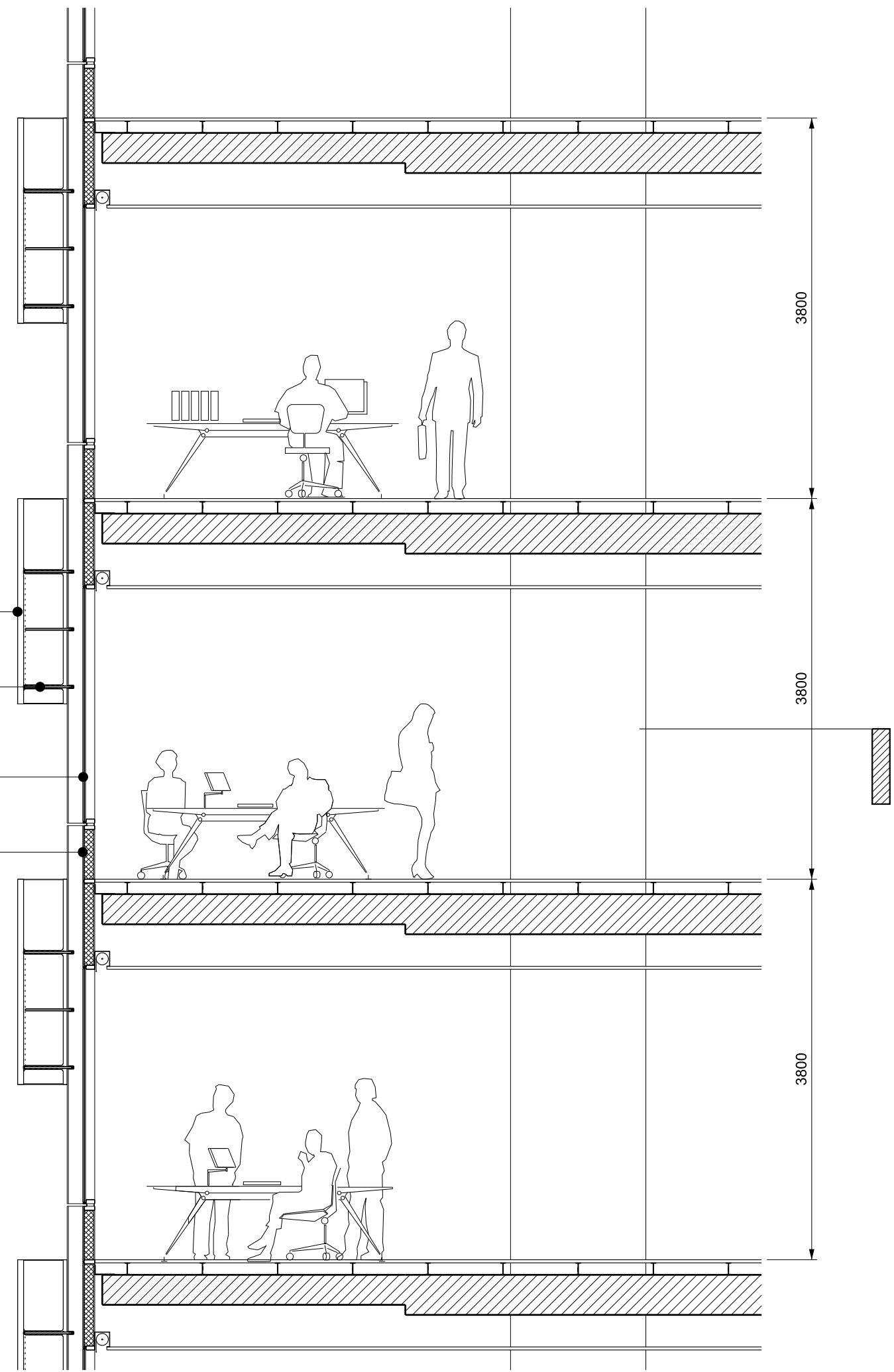
- |     |  |     |  |
|-----|--|-----|--|
| 1 - | <b>STRUCTURE</b><br>Primary structural concrete frame  | 4 - | <b>SOLAR SHADING</b><br>Glazed vertical shading fin within sub-frame supported from curtainwall mullion with translucent and fritted sections to high level and spandrel zones |
| 2 - | <b>EXTERNAL ENVELOPE</b><br>Double glazed unit within aluminium curtainwall system with blind                  | 5 - | <b>SOLAR SHADING</b><br>Fixed horizontal louvre supported from curtainwall mullion and vertical fin sub-frame  |
| 3 - | <b>EXTERNAL ENVELOPE</b><br>Back-painted glass spandrel and upstand panels within aluminium curtainwall system |     |  |

Revision	Date	Description	Legal	Site Address	Lead Architect	Collaborating Architect	Client	Project	Drawn/Checked by	Drawing Title	Scale @ A1	Drawing Number
A	21-10-2011	Barangaroo South C3 Project Application MP11_0044	<p>Do not scale from drawing. The author of this drawing takes no responsibility for any dimensions obtained by measuring or scaling from this drawing and no reference may be placed on such dimensions. If no dimension is given, it is the responsibility of the recipient to ascertain the dimension specifically from the author or by the measurement.</p> <p>The fixing of all structural and service elements must always be checked against the relevant engineer's drawings. No reference should be placed upon taking information shown on this drawing.</p> <p>© copyright Rogers Stirk Harbour + Partners. All rights reserved 2010</p>	<p>Barangaroo Hickson Rd Millers Point NSW 2000 Sydney, Australia</p>	<p><b>RSHP Australia Pty Limited</b> Ivan Harbour   Principal Architect   RIAA NSW ARB #484</p> <p>65-69 Kent St t: +61 2 9253 5655 Millers Point t: +61 2 9253 5666 NSW 2000 email: j6100@rsh-p.com Sydney, Australia www.rsh-p.com</p>	<p>30 The Bond 30 Hickson Rd Millers Point NSW 2000 Sydney, Australia</p> <p>t: +61 2 9236 6111 t: +61 2 9383 8133</p> <p>www.bovislendlease.com</p>	<p>30 The Bond 30 Hickson Rd Millers Point NSW 2000 Sydney, Australia</p> <p>t: +61 2 9236 6111 t: +61 2 9383 8133</p> <p>www.bovislendlease.com</p>	<p>Barangaroo South - C3</p> <p>Drawing Purpose Project Application: MP11_0044</p>	<p>JS/YT</p> <p>Detailed Bay Typical East/West Facade Office Floor</p>	<p>1:50</p> <p>07-10-2011</p>	<p>RSHP-A-C3-6130-E</p> <p>21-10-2011</p>	<p>Revision</p> <p>A</p>

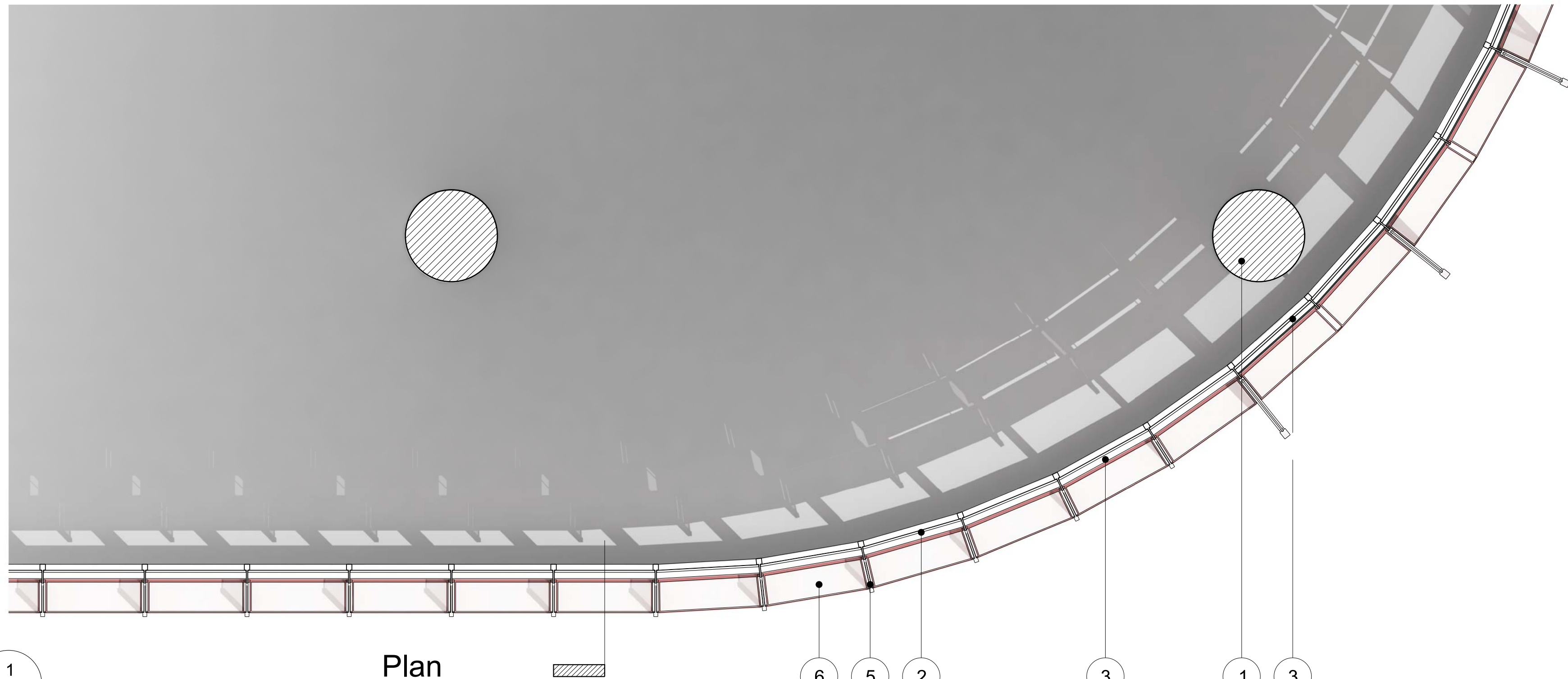




1  
Elevation  
1:50





2  
Section  
1:50



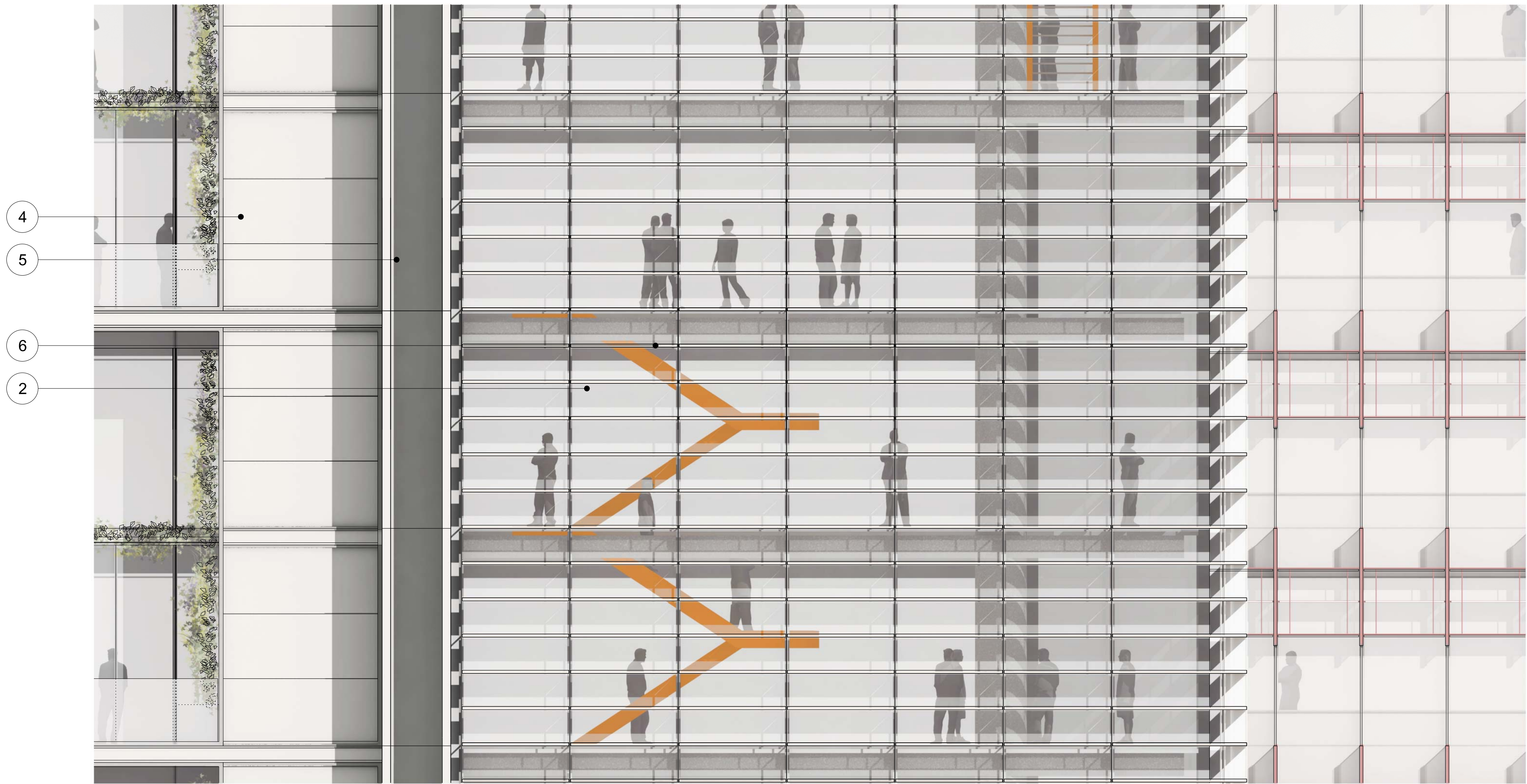
1  
Plan  
1:50

MATERIAL DESCRIPTION

- |   |   |
|---|---|
| 1 - STRUCTURE<br>Primary structural concrete frame  | 5 - SOLAR SHADING<br>Glazed vertical shading fin within sub-frame supported from curtainwall mullion with translucent and fritted sections to high level and spandrel zones |
| 2 - EXTERNAL ENVELOPE<br>Double glazed unit within aluminium curtainwall system                             | 6 - SOLAR SHADING<br>Fixed horizontal louvre supported from curtainwall mullion and vertical fin sub-frame  |
| 3 - EXTERNAL ENVELOPE<br>Double glazed unit within aluminium curtainwall system with blind                  |   |
| 4 - EXTERNAL ENVELOPE<br>Back-painted glass spandrel and upstand panels within aluminium curtainwall system |   |

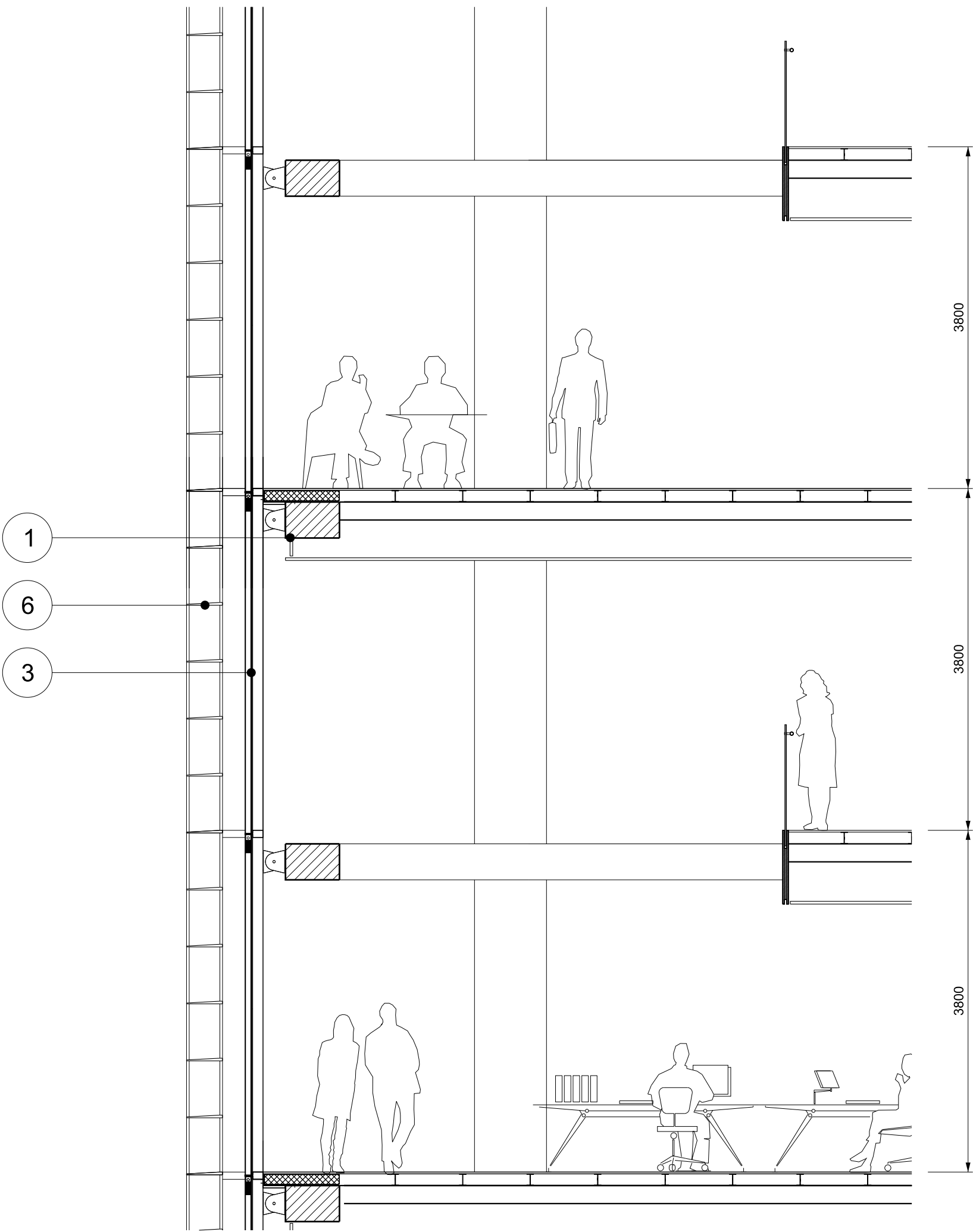
Revision	Date	Description	Legal	Site Address	Lead Architect	Collaborating Architect	Client	Project	Drawn/Checked by	Drawing Title	Scale @ A1	Drawing Number	
A	21-10-2011	Barangaroo South C3 Project Application MP11_0044	Do not scale from drawing. The author of this drawing takes no responsibility for any dimensions obtained by measuring or scaling from this drawing and no reliance may be placed on such dimensions. If no dimension is given, it is the responsibility of the recipient to ascertain the dimension specifically from the author or by site measurement. The dating of all structural and services elements must always be checked against the relevant engineer's drawings. No reliance should be placed upon dating information shown on this drawing. © copyright Rogers Stirk Harbour + Partners, all rights reserved 2010	Barangaroo Hickson Rd Millers Point NSW 2000 Sydney, Australia	<b>RSHP Australia Pty Limited</b> Ivan Harbour   Principal Architect   RAIA NSW ARB 8484  65-69 Kent St Millers Point NSW 2000 Sydney, Australia t: +61 2 9253 5655 f: +61 2 9253 5666 email: J6100@rsh-p.com www.rsh-p.com	 30 The Bond 30 Hickson Rd Millers Point NSW 2000 Sydney, Australia t: +61 2 9236 6111 f: +61 2 9383 8133 www.bovislendlease.com	 30 The Bond 30 Hickson Rd Millers Point NSW 2000 Sydney, Australia t: +61 2 9236 6111 f: +61 2 9383 8133 www.bovislendlease.com	Barangaroo South - C3	JS/YT	Detailed Bay	1:50	RSHP-A-C3-6140-N	
Drawing Purpose Project Application: MP11_0044										Typical North Facade Office Floor	Drawing Date 07-10-2011	Revision Date 21-10-2011	Revision A





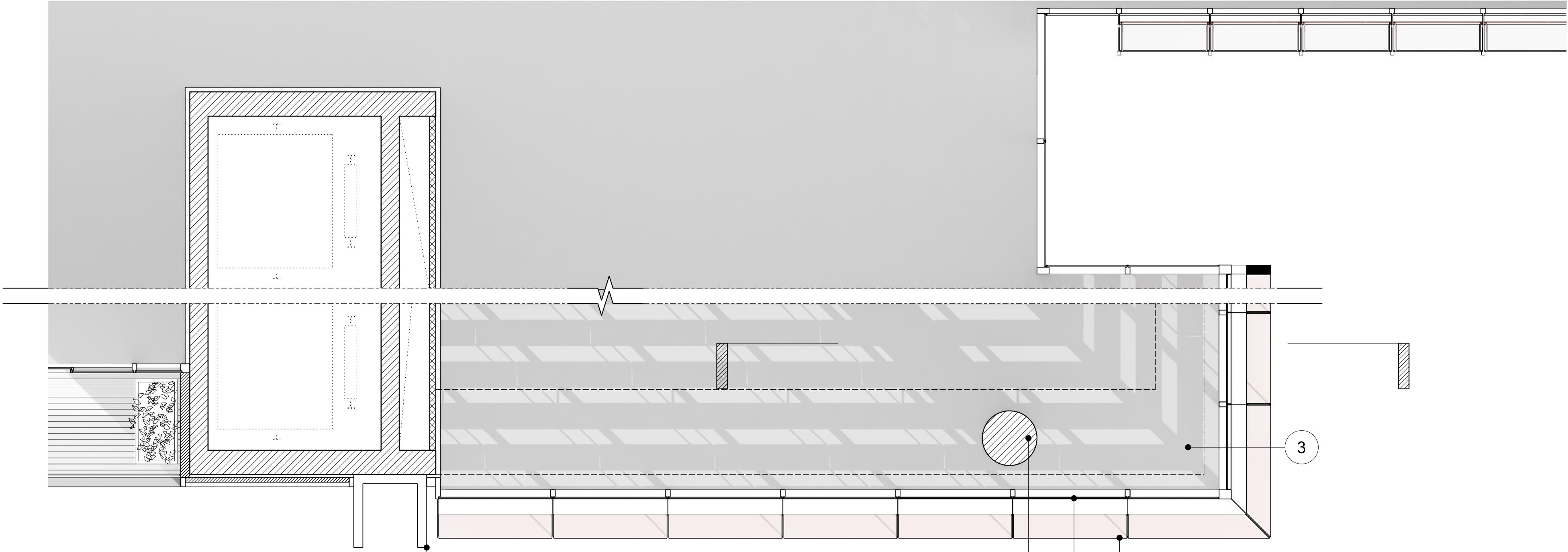
1  
Elev

Elevation  
1:50



2  
Sec

Section  
1:50



3  
Plan

Plan  
1:50

MATERIAL DESCRIPTION

- |  |  |
|--|--|
| 1 - STRUCTURE<br>Primary structural concrete frame   | 5 - EXTERNAL ENVELOPE<br>Vertical aluminium fin  |
| 2 - EXTERNAL ENVELOPE<br>Double glazed unit within aluminium curtainwall system            | 6 - SOLAR SHADING<br>Metallic horizontal shading blade supported from curtainwall mullion on sub-frame |
| 3 - EXTERNAL ENVELOPE<br>Double glazed unit within aluminium curtainwall system with blind |  |
| 4 - EXTERNAL ENVELOPE<br>Composite aluminium panel   |  |
- NOTE  
Internal stairs are for illustrative purposes only and do not form part of application