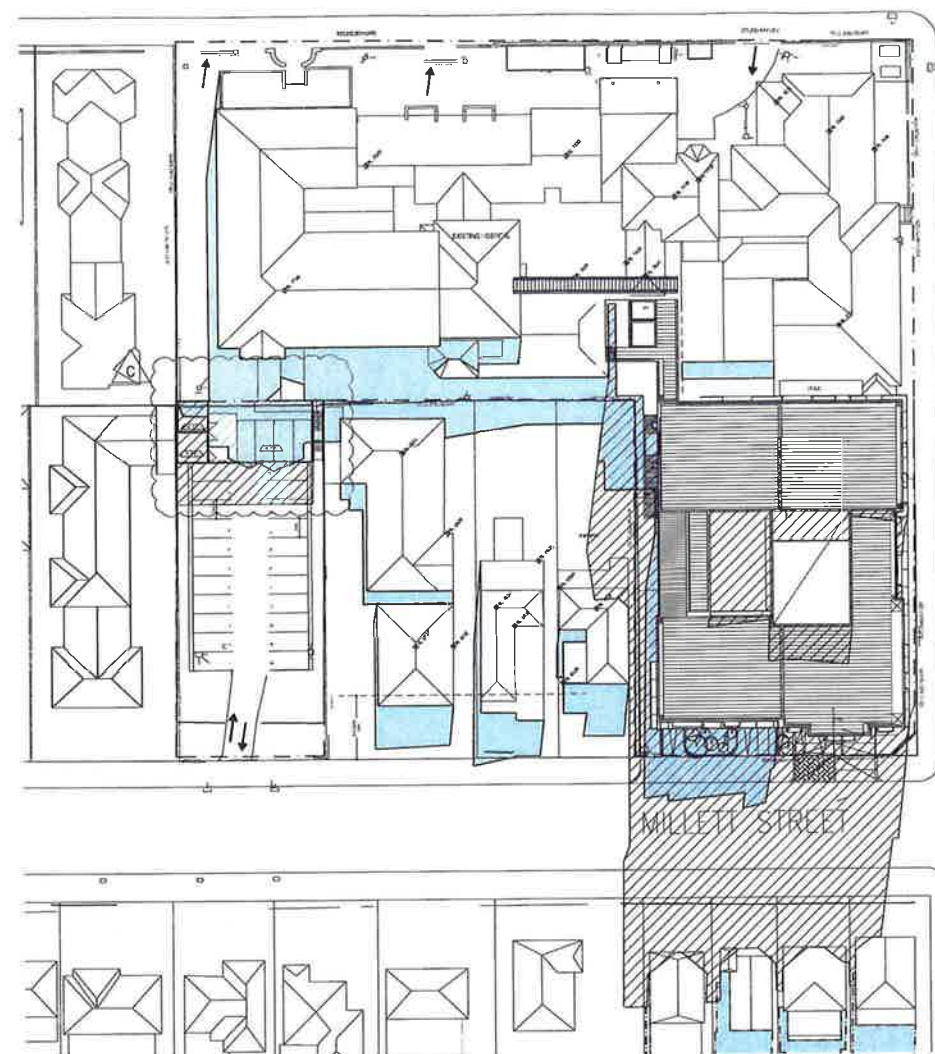


R ROAD

GLOUCESTER ROAD

GLOUCES



1 SUN STUDY - MARCH 9:00 PROPOSED AND EXISTING
DA-62 Scale 1:500

LEGEND



EXISTING SHADOW



NEW SHADOW



Major Project Number: **MP11_0042** approved on **9 April 2013** by the Planning Assessment Commission, as delegate for the Minister for Planning & Infrastructure, in accordance with the *Environmental Planning & Assessment Act 1979*, subject to conditions of approval.
Signed:

ISSUE	REVISION	DATE	BY	CHK	DATE	ISSUE	REVISION	DATE	BY	CHK	DATE
A	ISSUE FOR DEVELOPMENT APPROVAL	1/12	IPW		31.08.12						
B	DA AMENDMENTS	1/12	NS		04.02.13						
C	DA AMENDMENTS	1/12	NS		04.02.13						

CONSULTANTS:

healthcare

health science
PLANNING CONSULTANTS

MELBOURNE
Agriculture House East
Level 1, 525 Flinders Street
Melbourne VIC Australia 3000
TEL: (03) 9202 2333
FAX: (03) 9202 2334
http://www.hpsa.com.au
info@hpsa.com.au
c.mallinson@hpsa.com.au
ABN: 24 050 196 170
ACN: 096 196 170

SYDNEY
Level 5, 61 Market Street
Sydney NSW Australia 2000
TEL: (02) 8286 5777
FAX: (02) 8286 5745
http://www.hpsa.com.au
Email: hpsa@hpsa.com.au
ABN: 20 020 016 830
ACN: 025 016 830

REASON FOR ISSUE:
PROJECT APPLICATION

PROJECT:
HURSTVILLE PRIVATE HOSPITAL

TITLE:
SHADOW DIAGRAMS SHEET 3

DRAWING No:

DA-62

NORTH:



SCALE:

1:500@A1

PROJECT No:

40-1076

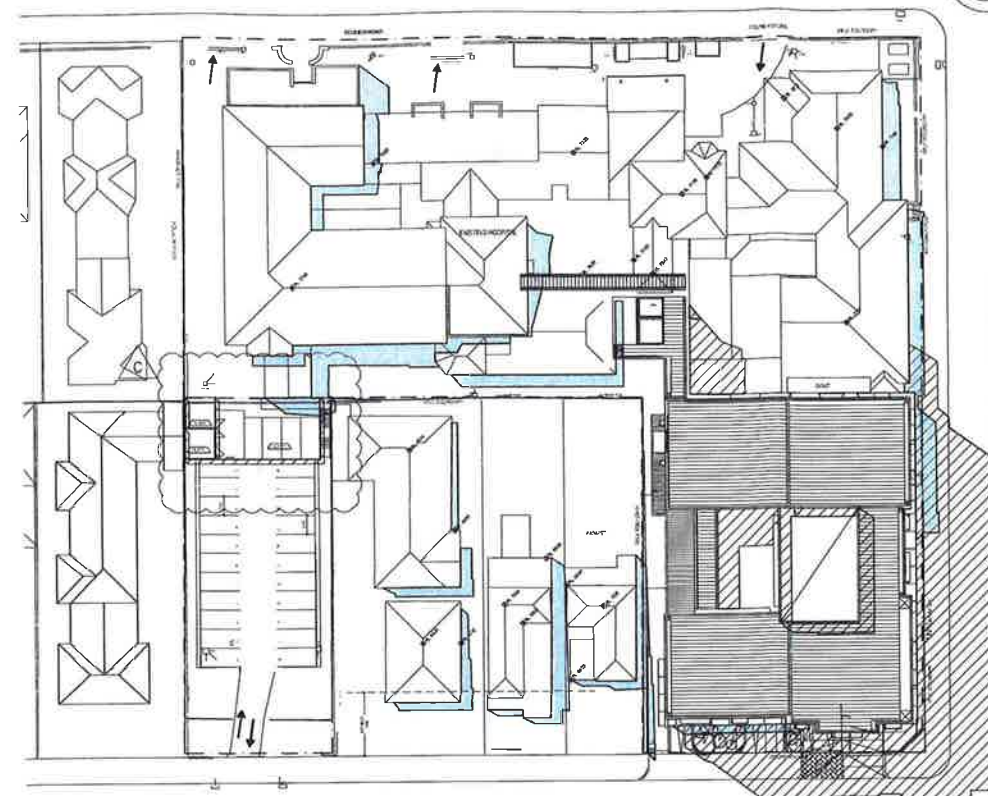
REV:

C

R ROAD

GLOUCESTER ROAD

GLOUCES

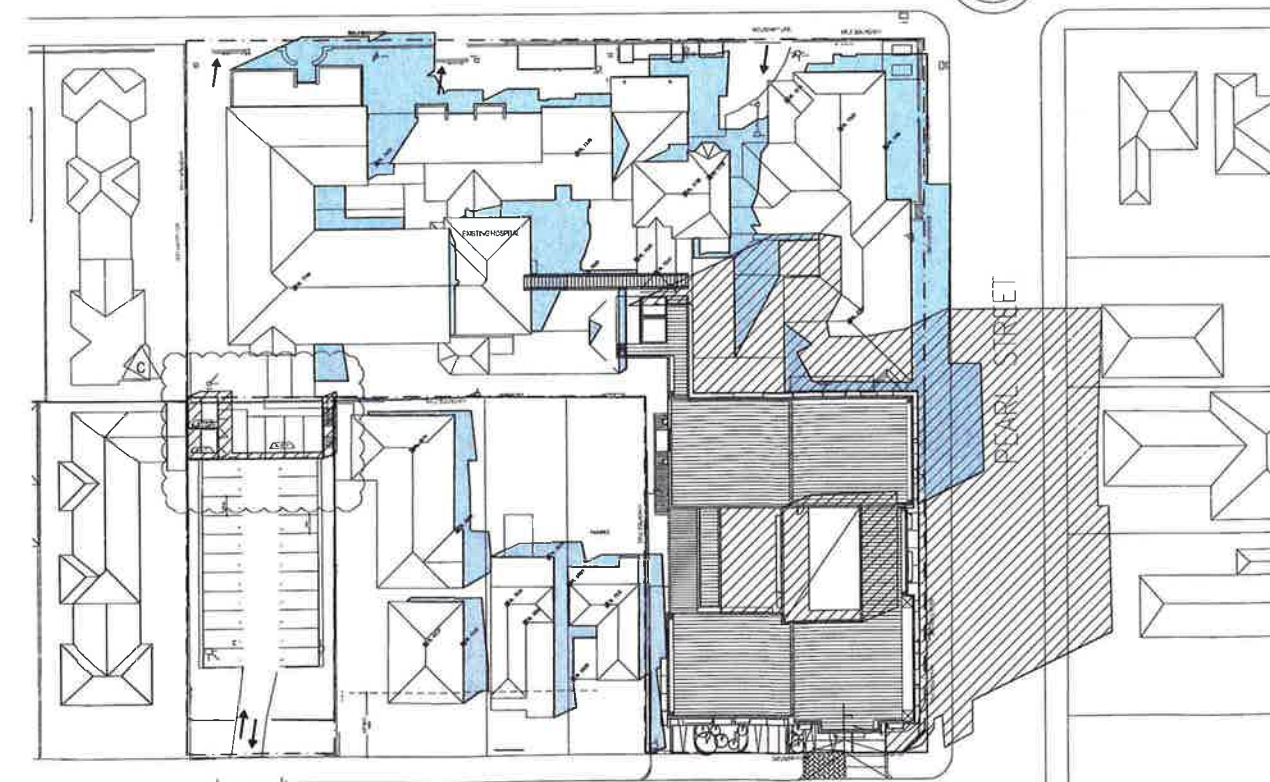


2 SUN STUDY - MARCH 12:00 PROPOSED AND EXISTING
DA-62 Scale 1:500

R ROAD

GLOUCESTER ROAD

GLOUCES



3 SUN STUDY - MARCH 15:00 PROPOSED AND EXISTING
DA-62 Scale 1:500

MILLETT STREET

HURSTVILLE PRIVATE HOSPITAL REDEVELOPMENT

LANDSCAPE CONCEPT PLAN

GLOUCESTER ROAD, HURSTVILLE

DRAWING SCHEDULE

DRAWING:	DESCRIPTION:	REVISION:	DATE:
LP01	Landscape Cover Sheet & Site Plan	Rev B	13.02.13
LP02	Landscape Concept Plan	Rev E	13.02.13

KEY

1. STREET FRONTAGE

The frontage along Millet and Pearl Streets is an important link with the landscape character of the local area. Existing tree planting will be maintained and protected during construction.

2. EXISTING TREES

The existing mature trees (*Eucalyptus microcorys*), located West of the existing Medical Centre entry, will be retained and protected. Refer to the Arborist Report for additional information.

3. SIGNAGE

There is an opportunity for signage on the corner of Pearl Street and Gloucester Road. New tree and shrub planting on this corner will continue the Landscape

4. MILLET STREET - CARPARK ENTRY

Carpark access along Millet street will be maintained. Low shrub and groundcover planting either side of the vehicle crossing point will allow for clear sight lines along Millet street.

LEGEND

- Existing Lot Boundary
- Concrete Footpath
- Existing street trees to be retained
- Existing trees to be removed
- Proposed/Existing Development
- Mulched bed beneath existing street tree plantings
- Tree planting - *Gleditsia* sp. with clear trunks to a height of 2m
- Street tree planting - *Ulmus parvifolia* to be planted in accordance with Hurstville Council's street tree policy.
- Tree planting - *Pyrus calleryana* 'Capital'
- Tree planting - *Waterhousea floribunda*



1 Landscape Site Plan
1:300



Major Project Number: **MP11_0042** approved on **9 April 2013** by the Planning Assessment Commission, as delegate for the Minister for Planning & Infrastructure, in accordance with the *Environmental Planning & Assessment Act 1979*, subject to conditions of approval.
Signed: _____



A	14/10/12	REVISED LANDSCAPE PLAN FOR DEVELOPMENT APPLICATION
B	13/02/13	REVISED LANDSCAPE PLAN FOR DEVELOPMENT APPLICATION

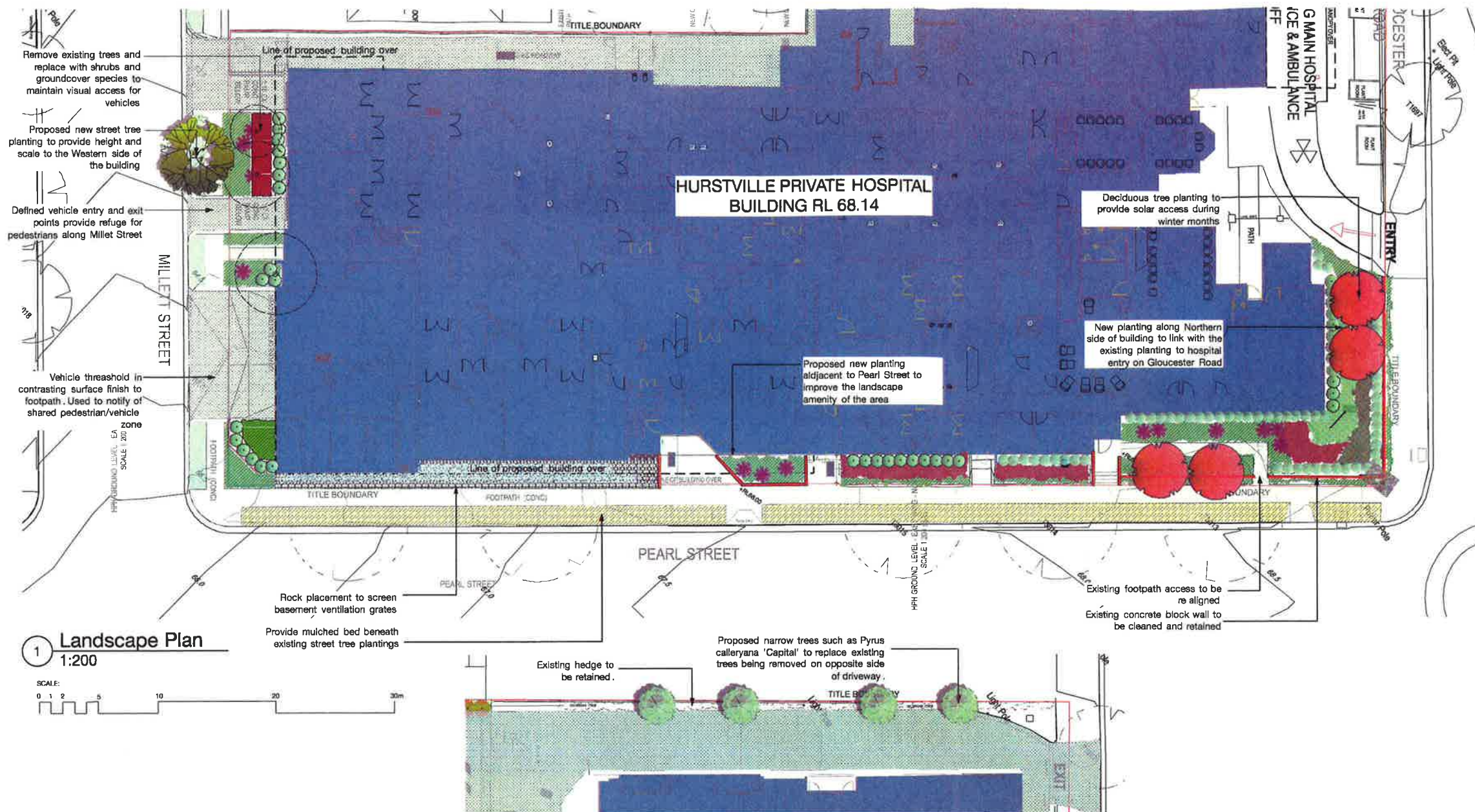
DO NOT SCALE DRAWINGS. CHECK ALL DIMENSIONS ON SITE
FIGURED DIMENSIONS TAKE PRECEDENCE

CLIENT:
HEALTHCARE

PROJECT:
HURSTVILLE PRIVATE HOSPITAL

FILE:
LANDSCAPE PLAN

STATUS: DEVELOPMENT APPLICATION					
DATE:	SCALE:	PROJ No:	ISSUE:	REV:	
13/02/13	1:300 (B1)	0806			
DRAWN:	CHECKED:	APPROVED:			
MC	FW	DM			
ISSUE:	SHEET:				
B	1 of 2				B



Landscape Legend

- Existing Lot Boundary
- Existing Storm water pit, to be retained
- Concrete Footpath
- Existing Retaining Wall
- Proposed Wall
- Existing street trees to be retained
- Existing trees to be removed
- Grass
- Mulched bed beneath existing street tree plantings
- Proposed Groundcover Planting, type 1
- Proposed Groundcover Planting, type 2
- Proposed Groundcover Planting, type 3
- Proposed Groundcover Planting, type 4
- Small Shrub planting
- Medium Shrub Planting
- Accent Planting
- Tree planting - *Pyrus calleryana* 'Capital'
- Tree planting - *Gleditsia* sp. with clear trunks to a height of 2m
- Street tree planting - *Ulmus parvifolia* to be planted in accordance with Hurstville Council's street tree policy.

1 Landscape Plan

SCALE: 1:200
0 1 2 5 10 20 30m

2 Northern Boundary

SCALE: 1:200

Planting Themes

Trees and Shrubs



Gleditsia *Philotheca myoporoides* *Loropetalum chinense* 'Burgundy' *Westringia fruticosa* 'Zena'

Groundcovers and Low Lying Plants



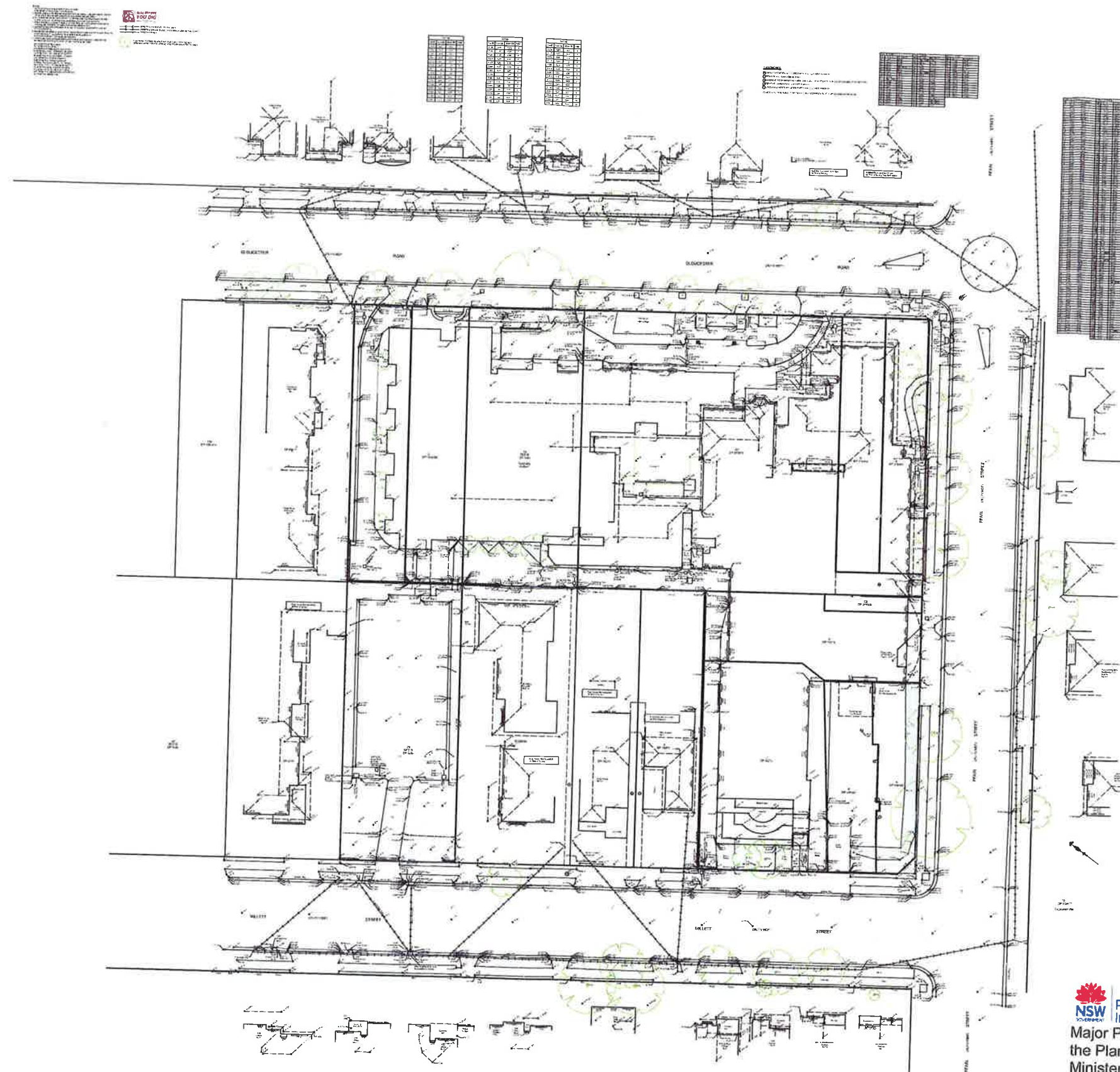
Asplenium sp. *Trachleosperrum jasminoides* *Clivia miniata* *Myoporum parvifolium* *Agapanthus* sp. *Ajuga reptans* *Liriope muscari* *Viola hederacea* *Dianella tasmanica* *Gardenia augusta* 'Florida'

Plant Schedule

Botanical Name:	Common Name:	Qty:	Pot Size:	Spacing:
Trees:				
<i>Gleditsia triacanthos</i> var. <i>inermis</i> 'Elegantissima'	Gleditsia	4	75L	As Shown
<i>Ulmus parvifolia</i>	Chinese Elm	1	75L	As Shown
<i>Pyrus calleryana</i> 'Capital'	Callery Pear	4	75L	As Shown
Shrubs:				
<i>Philotheca myoporoides</i>	Wax Flower	19	200mm	As Shown
<i>Westringia fruticosa</i> 'Zena'	Coastal Rosemary	20	200mm	As Shown
<i>Gardenia augusta</i> 'Florida'	Gardenia	19	200mm	As Shown
<i>Loropetalum chinense</i> var. <i>rubrum</i> 'Burgundy'	Chinese Fringe Flower	19	200mm	As Shown
<i>Philodendron</i> 'Xanadu'	Philodendron	19	200mm	As Shown
Accent Plants:				
<i>Asplenium nidus</i>	Bird's Nest Fern	13	200mm	As Shown
Groundcovers & Low Lying Plants:				
<i>Dianella tasmanica</i>	Blue Flax Lilly	120	100mm	4/m2
<i>Myoporum parvifolium</i>	Creeping Boobialla	15	100mm	1/2m2
<i>Trachleosperrum jasminoides</i>	Chinese Star Jasmine	15	100mm	1/2m2
<i>Liriope muscari</i>	Turf Lily	120	100mm	4/m2
<i>Viola hederacea</i>	Native Violet	180	100mm	6/m2
<i>Agapanthus</i> sp.	Agapanthus	120	100mm	4/m2
<i>Ajuga reptans</i>	Blue Bugleweed	240	100mm	8/m2
<i>Clivia miniata</i>	Clivia	120	100mm	4/m2

Major Project Number: **MP11_0042** approved on **9 April 2013** by the Planning Assessment Commission, as delegate for the Minister for Planning & Infrastructure, in accordance with the *Environmental Planning & Assessment Act 1979*, subject to conditions of approval.
Signed: _____

	A	24/05/12	DRAFT CONCEPT PLAN FOR REVIEW	CLIENT: HEALTHCARE	PROJECT: HURSTVILLE PRIVATE HOSPITAL	TITLE: LANDSCAPE PLAN	STATUS: DEVELOPMENT APPLICATION				
	B	29/08/12	LANDSCAPE CONCEPT PLAN FOR COORDINATION				DATE: 13/02/13	SCALE: 1:200@A1	PROJ No: 0806	JOB:	
	C	31/08/12	LANDSCAPE CONCEPT PLAN FOR DEVELOPMENT APPLICATION				STAGE: DA	DESIGN: MC	CHECKED: PW	APPROVED: DM	
	D	15/10/12	REVISED LANDSCAPE PLAN FOR DEVELOPMENT APPLICATION				FILE: 0806.LP01.REVE.DA.13022013	NOTED:	ISSUE: E	SHEET: 2 of 2	REV: E
	E	13/02/13	REVISED LANDSCAPE PLAN FOR DEVELOPMENT APPLICATION								
	DO NOT SCALE DRAWINGS. CHECK ALL DIMENSIONS ON SITE. EXCLUDED DIMENSIONS HAVE PRECEDENCE.										



Major Project Number: **MP11_0042** approved on **9 April 2013** by the Planning Assessment Commission, as delegate for the Minister for Planning & Infrastructure, in accordance with the *Environmental Planning & Assessment Act 1979*, subject to conditions of approval.
Signed:

REV	DATE	DESCRIPTION
00	18/5/12	ORIGINAL ISSUE



PO Box 59
Miranda NSW 1490
e: enquiries@mitchellsurveying.com.au
t: 1300 882 960
f: 02 9531 0068

Project

Client

Hurstville Private
Gloucester Road, Hurstville

Heatcare

Title

Detail & Levels

© Information contained within this drawing is copyright of Mitchell Land Surveyors Pty Ltd.

Drawing No.	Revision
931BU	00
Date	Drawn
18 MAY 2012	SJM
Sheets	Scale
1 of 1	NTS