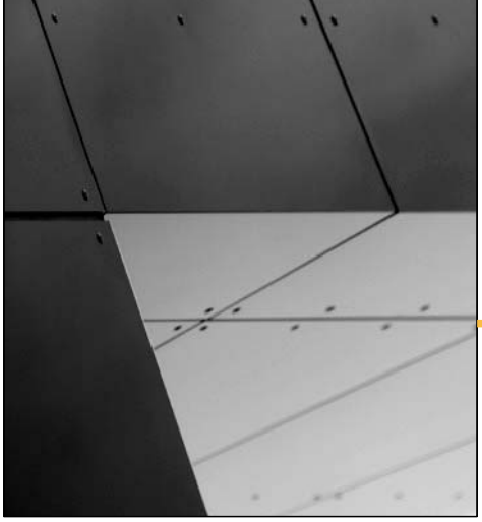
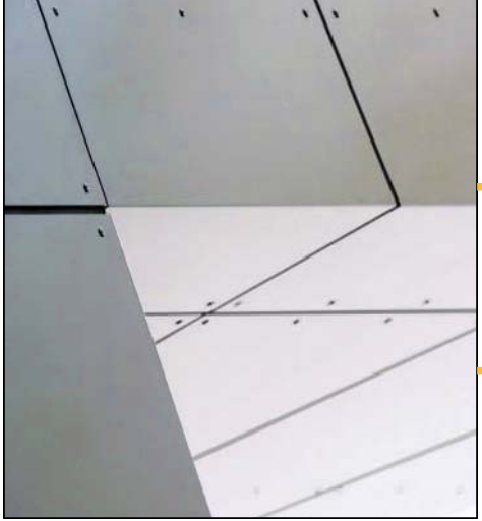
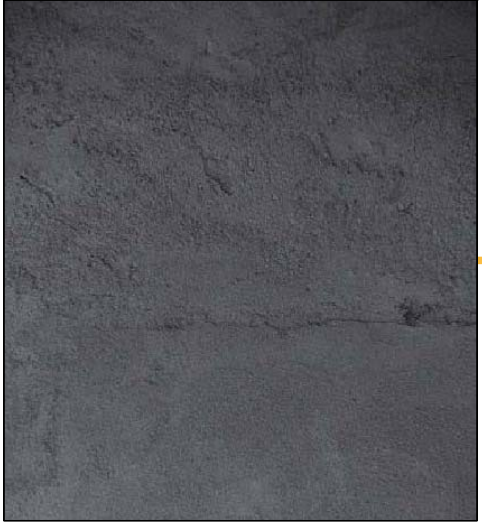
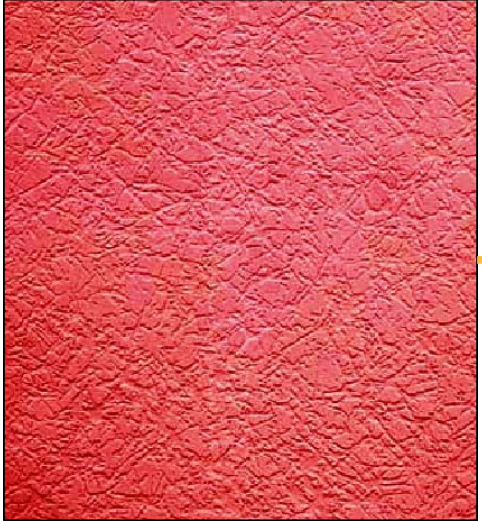
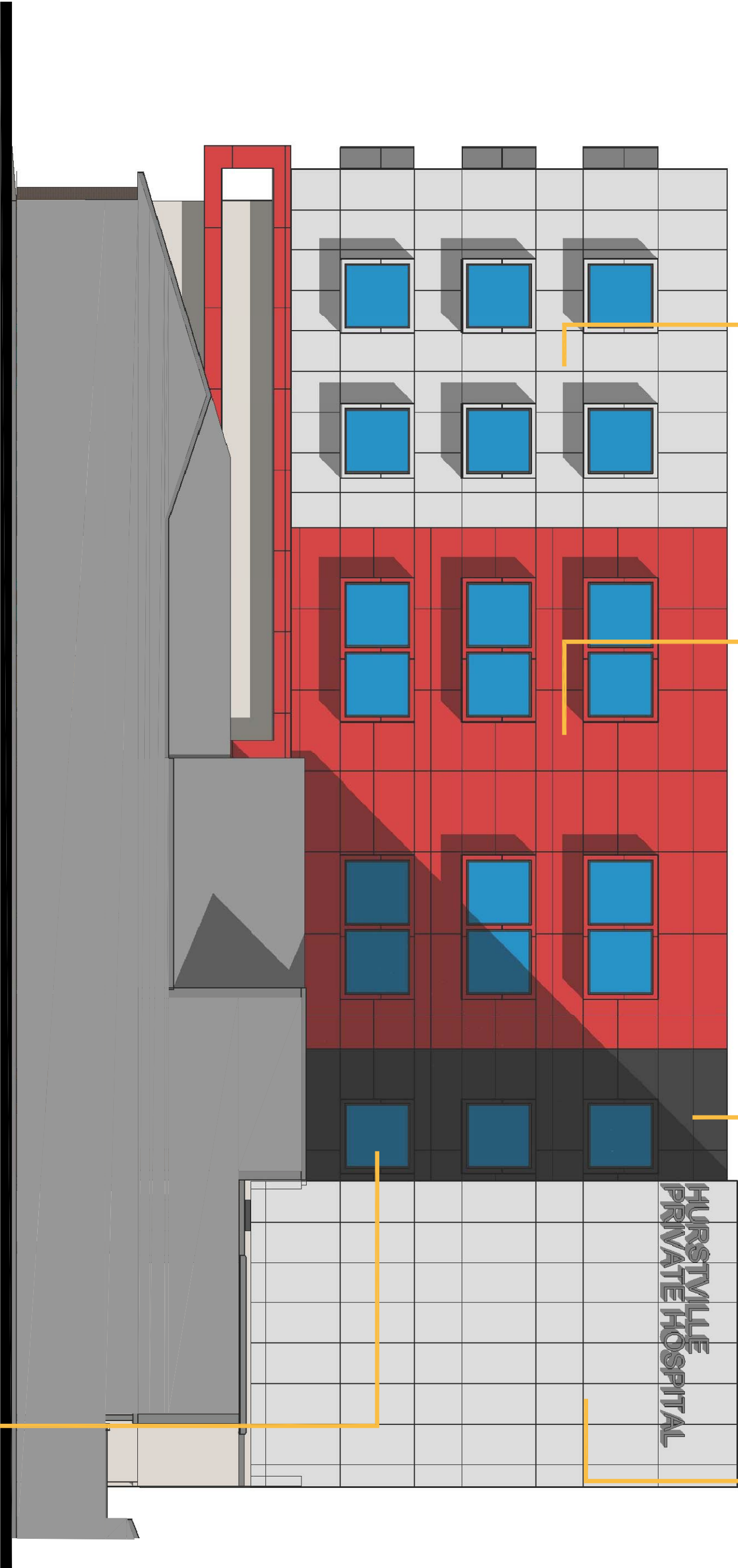
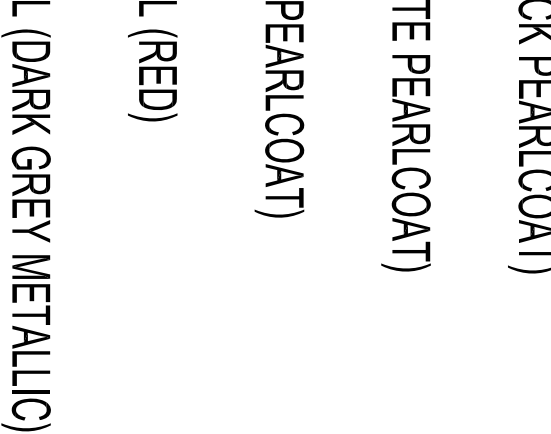
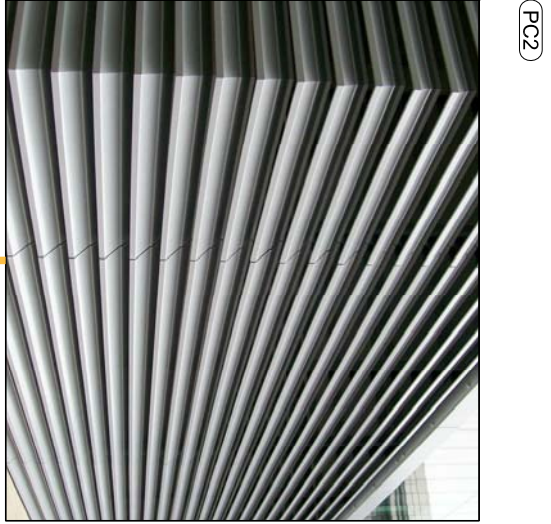
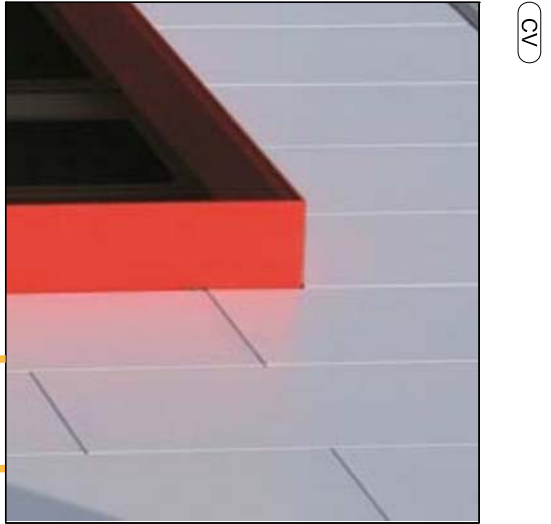
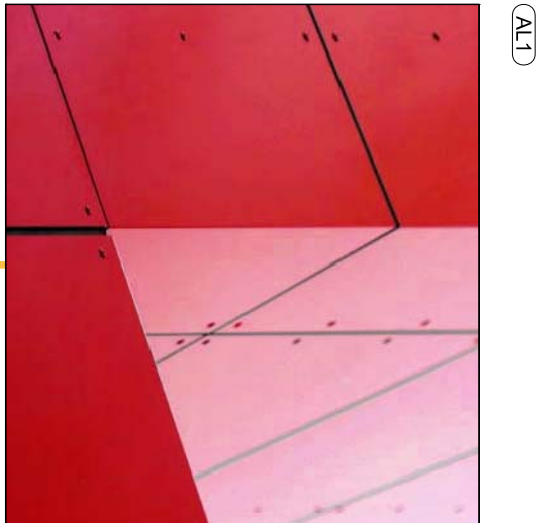
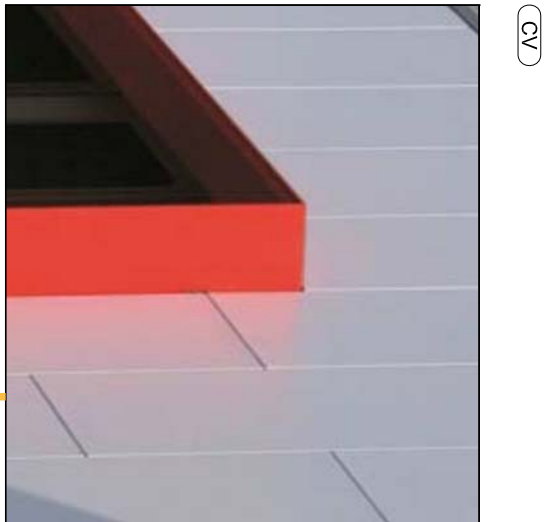


NOTE:

- (CH1)CFC PANEL HORIZONTAL (BLACK PEARLCOAT)
- (CH2)CFC PANEL HORIZONTAL (WHITE PEARLCOAT)
- (CV)CFC PANEL VERTICAL (WHITE PEARLCOAT)
- (ALT)COMPOSITE ALUMINIUM PANEL (RED)
- (AL2)COMPOSITE ALUMINIUM PANEL (DARK GREY METALLIC)
- (AL3)COMPOSITE ALUMINIUM PANEL (BRILLANT METALLIC)
- (RB1)PAINT FINISH RENDERED BLOCKWORK (GREY)
- (RB2)PAINT FINISH RENDERED BLOCKWORK (WHITE)
- (RB3)PAINT FINISH RENDERED BLOCKWORK (RED)
- (PC2)INTERPON POWDERCOAT (ANODIC NATURAL)
- (BS1)BACKLIT STAINLESS STEEL SIGN
- (GV)VISION GLASS



ISSUE	REVISION	DATE	ISSUE	REVISION	DATE
A	ISSUE FOR DEVELOPMENT APPROVAL	MS PW 31/08/12			

CONSULTANTS:



MELBOURNE
Northern Park East
Level 1, 1029 Phipps Street
Melbourne VIC 3000
TEL: (03) 9923 2334
FAX: (03) 9923 2334
http://www.hsc.com.au
Email: info@hsc.com.au
ABN: 54 000 016 170
ACN: 090 016 170

SYDNEY
Level 6, 61 Market Street
Sydney NSW Australia 2000
TEL: (02) 6986 3146
FAX: (02) 6986 3146
http://www.hsc.com.au
Email: info@hsc.com.au
ABN: 50 000 016 808
ACN: 090 016 808

REASON FOR ISSUE:
PROJECT APPLICATION

PROJECT:
HURSTVILLE PRIVATE HOSPITAL

TITLE:
MATERIALS BOARD
SHEET 2

DRAWING No:
DA-09

NORTH:
SCALE:
NTS@A1

PROJECT No:
40-1076

REV:
A