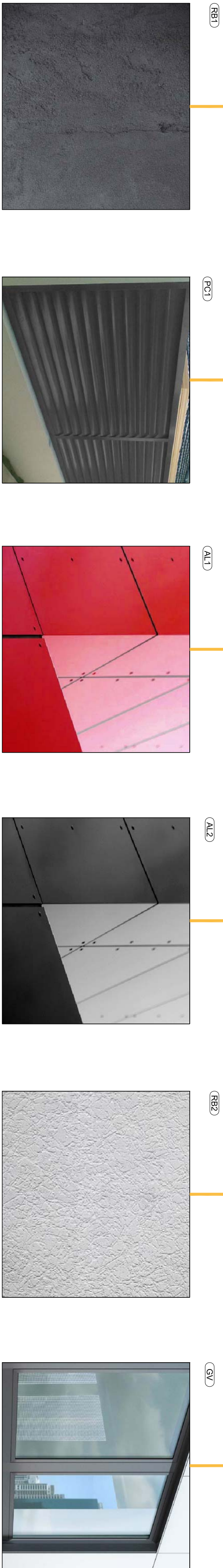
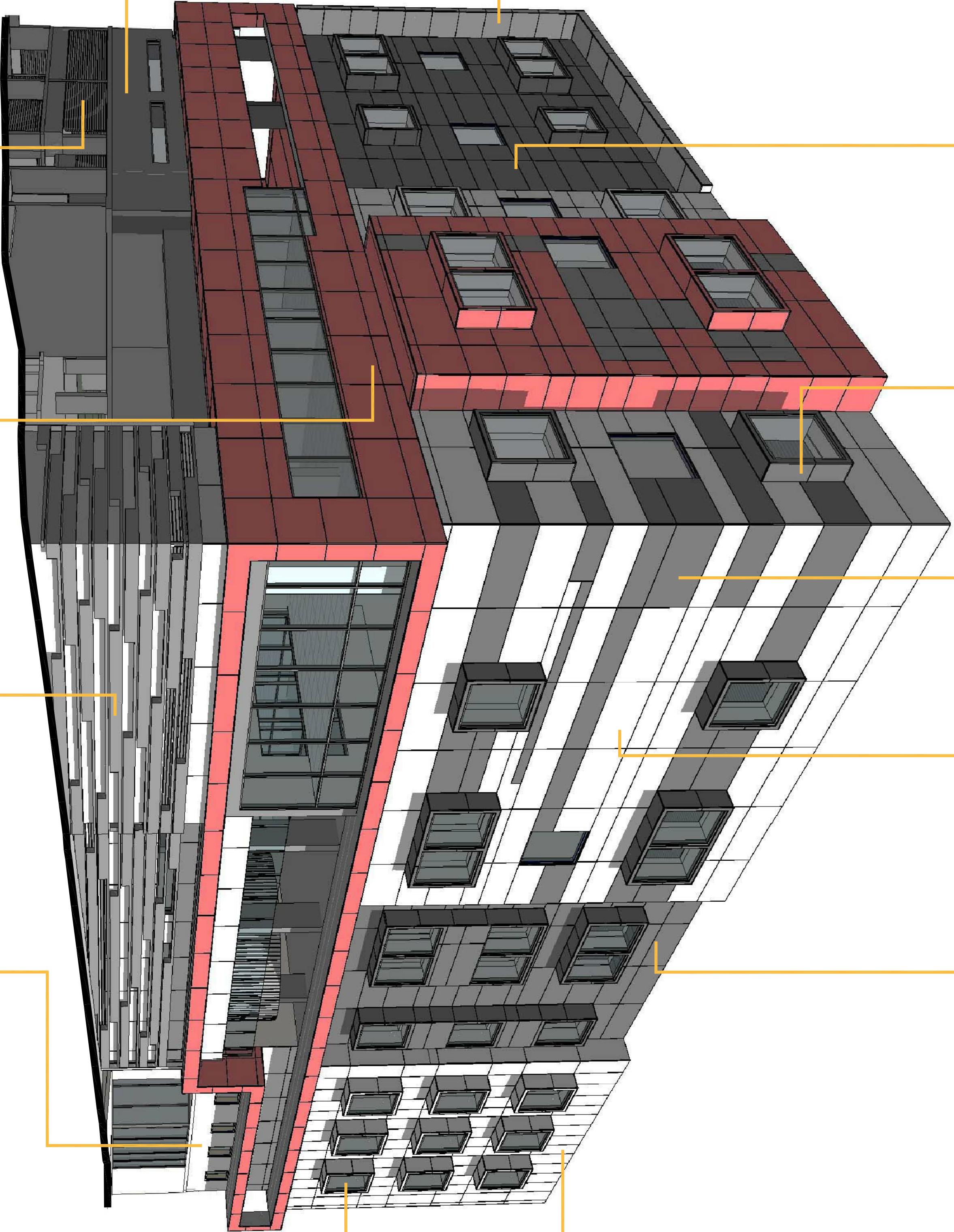




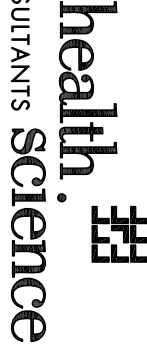

NOTE:

- (CH1) CFC PANEL HORIZONTAL (BLACK PEARLCOAT)
- (CH2) CFC PANEL HORIZONTAL (WHITE PEARLCOAT)
- (CV) CFC PANEL VERTICAL (WHITE PEARLCOAT)
- (AL1) COMPOSITE ALUMINIUM PANEL (RED)
- (AL2) COMPOSITE ALUMINIUM PANEL (DARK GREY METALLIC)
- (AL3) COMPOSITE ALUMINIUM PANEL (BRILLANT METALLIC)
- (RB1) PAINT FINISH RENDERED BLOCKWORK (GREY)
- (RB2) PAINT FINISH RENDERED BLOCKWORK (WHITE)
- (PC1) INTERPON POWDERCOAT (ROSEBERRY GREY)
- (GV) VISION GLASS



ISSUE	REVISION	DRN	CHK/APP	DATE
A	ISSUE FOR DEVELOPMENT APPROVAL	MS	PW	31/08/12

CONSULTANTS:



MELBOURNE

Northern Plains East
Level 1, 1255 Fritchie Street
Melbourne VIC 3004
TEL: (03) 8593 3334
FAX: (03) 8593 3334
http://www.hcsc.com.au
Email: info@hcsc.com.au
ABN: 34 050 195 170
ACN: 050 195 170

SYDNEY

Level 6, 61 Market Street
Sydney NSW Australia 2000
TEL: (02) 8568 5777
FAX: (02) 8568 5746
http://www.hcsc.com.au
Email: info@hcsc.com.au
ABN: 80 065 016 806
ACN: 065 016 806

REASON FOR ISSUE:
PROJECT APPLICATION

PROJECT:
HURSTVILLE PRIVATE HOSPITAL

TITLE:
MATERIALS BOARD
SHEET 1

DRAWING NO:
DA-08

NORTH:

SCALE:
NTS@A1

PROJECT No:
40-1076

REV:
A