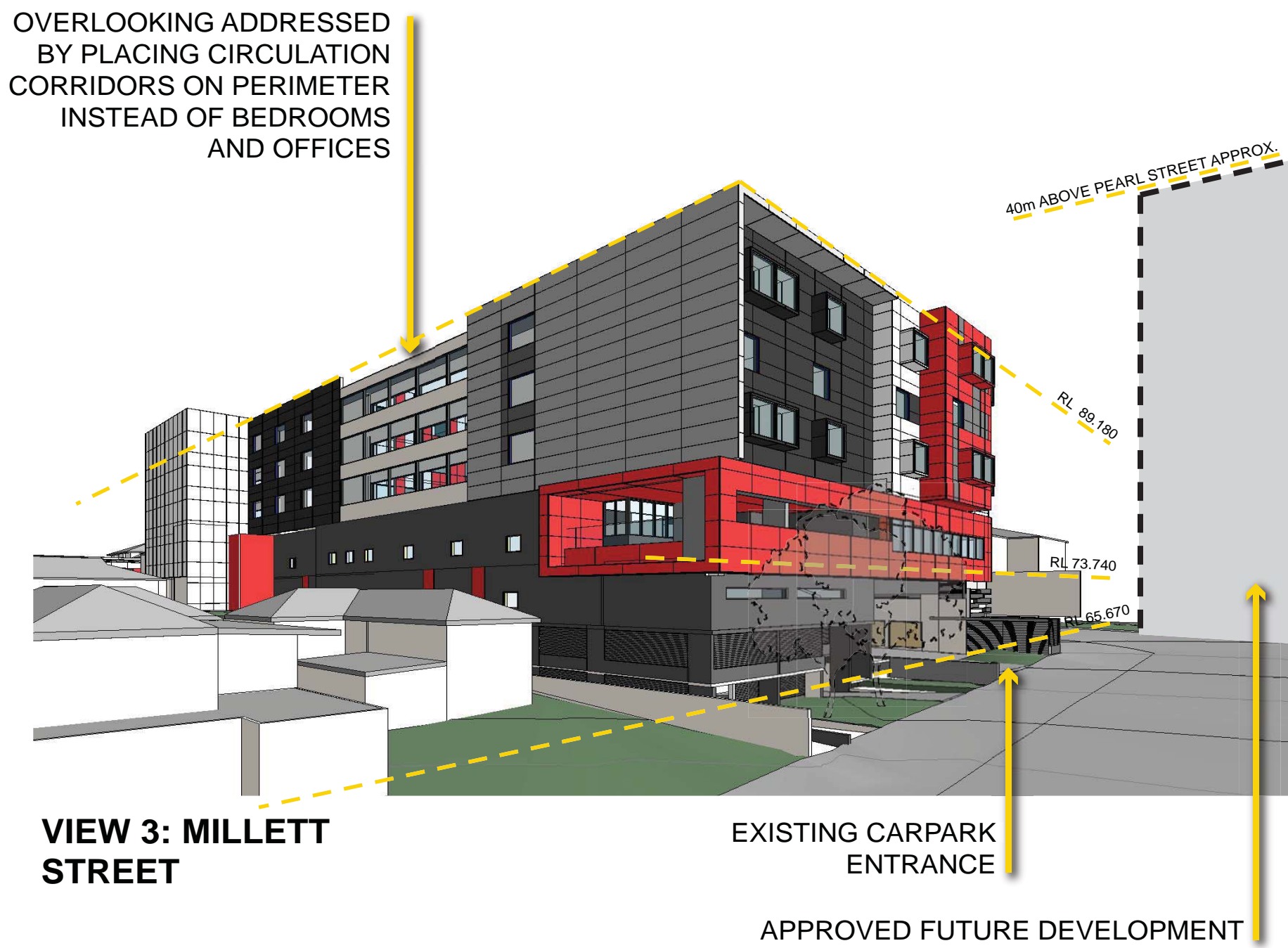
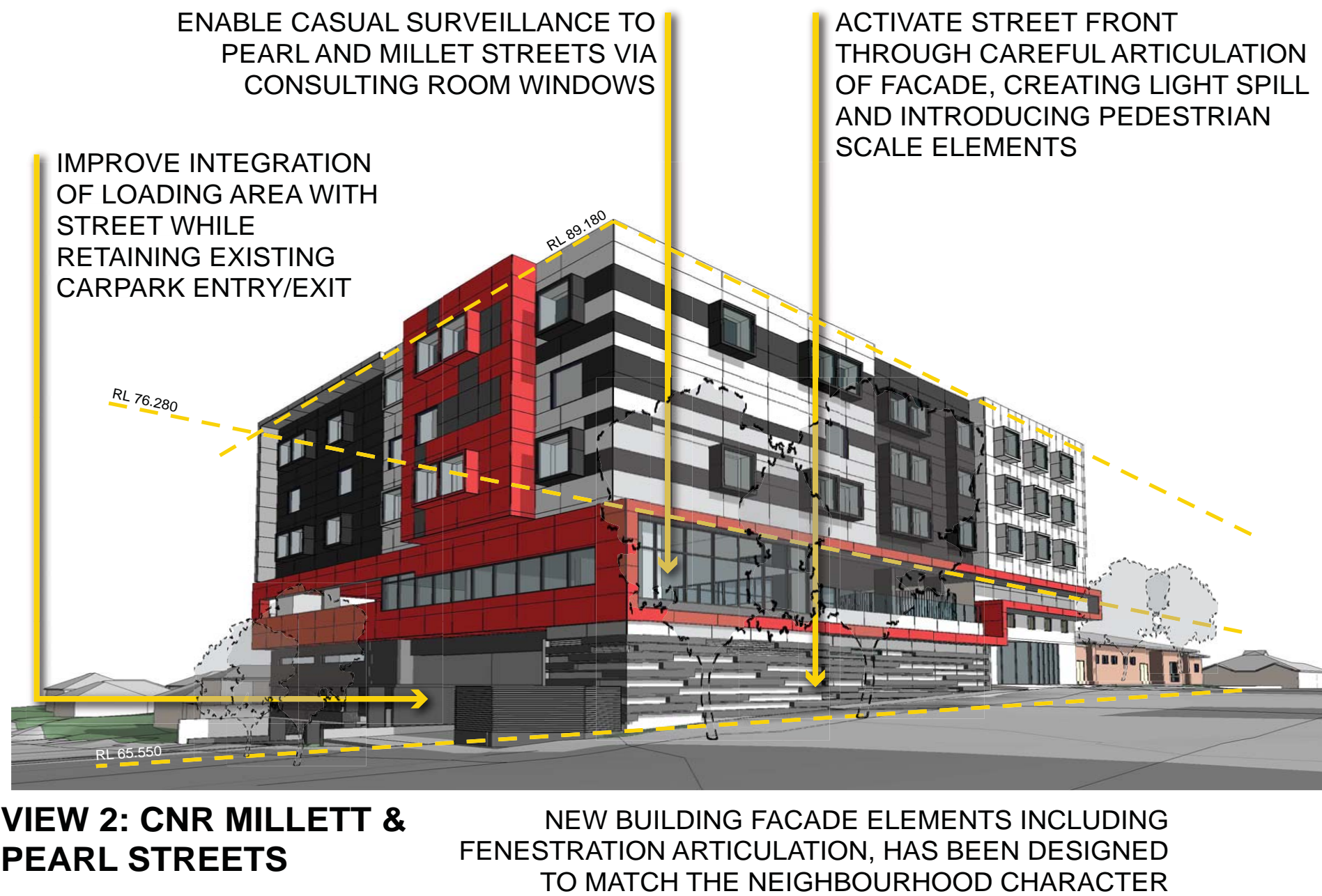
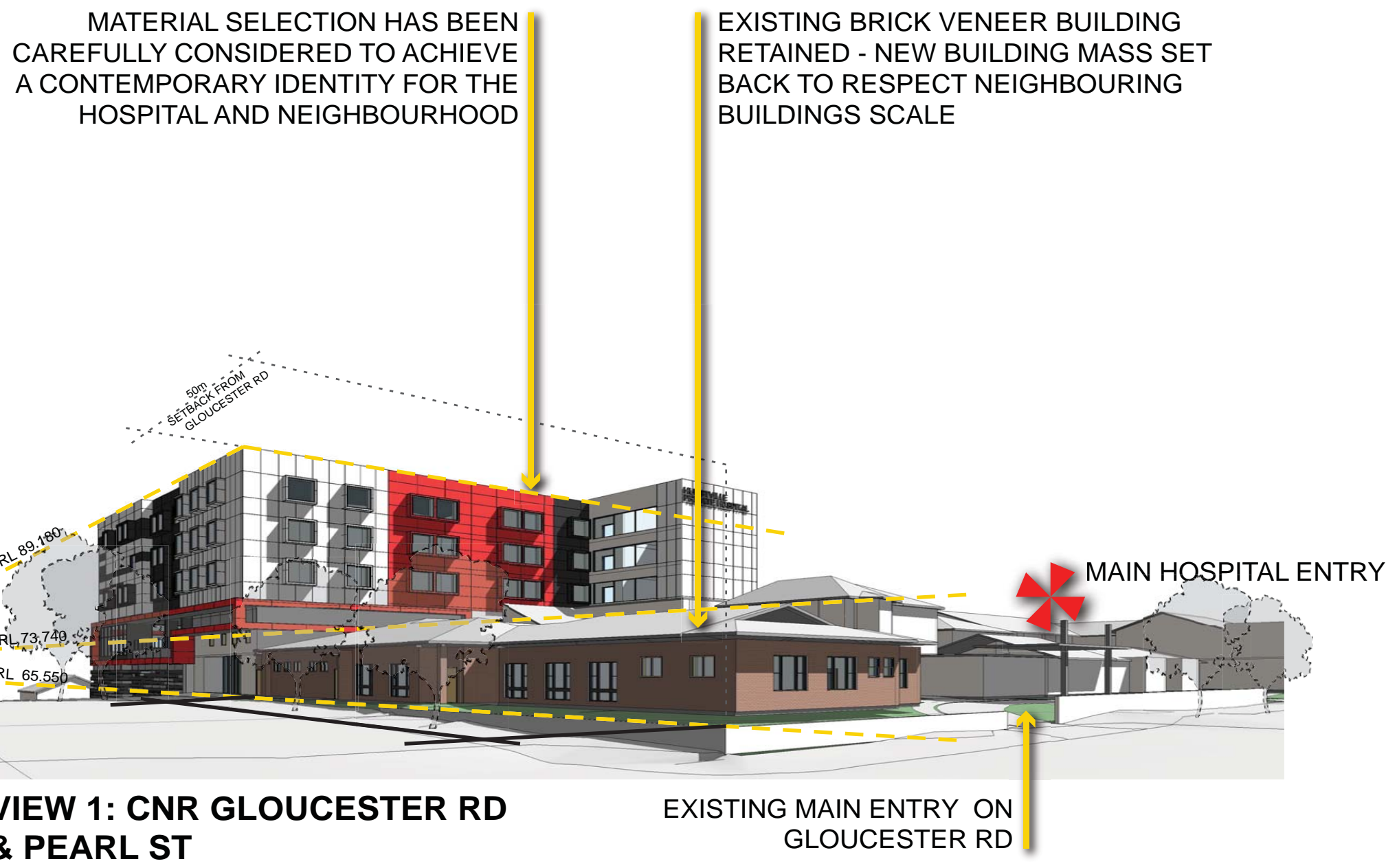
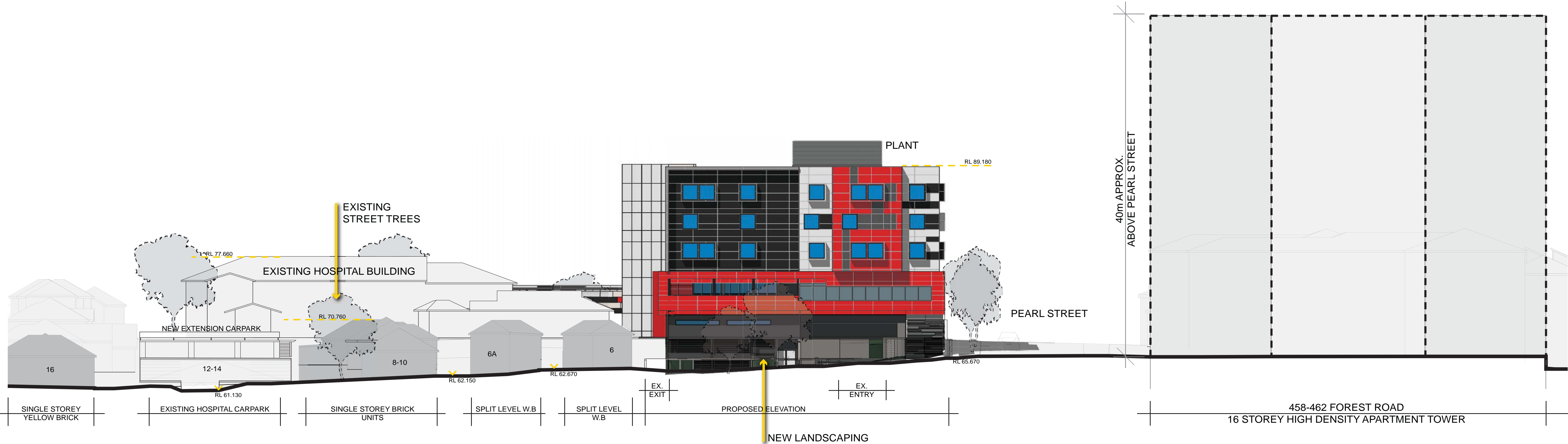


DESIGN RESPONSE ANALYSIS



SITE ELEVATION - MILLETT STREET



| ISSUE | REVISION | DRN | CHK/APP | DATE | ISSUE                          | REVISION | DRN | CHK/APP | DATE     |
|-------|----------|-----|---------|------|--------------------------------|----------|-----|---------|----------|
| A     |          |     |         |      | ISSUE FOR DEVELOPMENT APPROVAL | MS       | PW  |         | 31.08.12 |
|       |          |     |         |      |                                |          |     |         |          |
|       |          |     |         |      |                                |          |     |         |          |
|       |          |     |         |      |                                |          |     |         |          |
|       |          |     |         |      |                                |          |     |         |          |
|       |          |     |         |      |                                |          |     |         |          |
|       |          |     |         |      |                                |          |     |         |          |
|       |          |     |         |      |                                |          |     |         |          |
|       |          |     |         |      |                                |          |     |         |          |
|       |          |     |         |      |                                |          |     |         |          |

CONSULTANTS:

healthcare™

health science  
PLANNING CONSULTANTS

MELBOURNE  
Northbank Place East  
Level 1, 525 Flinders Street  
Melbourne VIC Australia 3000  
TEL: (03) 9923 2333  
FAX: (03) 9923 2334  
http://www.hspc.com.au  
Email: info@hspc.com.au  
ABN: 34 050 195 170  
ACN: 050 195 170

SYDNEY  
Level 6, 61 Market Street  
Sydney NSW Australia 2000  
TEL: (02) 9299 5777  
FAX: (02) 9299 5745  
http://www.hspc.com.au  
Email: info@hspc.com.au  
ABN: 90 095 016 836  
ACN: 095 016 836

REASON FOR ISSUE:  
PROJECT APPLICATION

PROJECT:  
HURSTVILLE PRIVATE HOSPITAL

TITLE:  
DESIGN RESPONSE SHEET 2

DRAWING No:  
DA-07

NORTH:  
SCALE:  
NTS@A1

PROJECT No:  
40-1076

REV:  
A