

FINISHES SCHEDULE							
IMAGE	CODE	DESCRIPTION	IMAGE	CODE	DESCRIPTION	CODE	DESCRIPTION
	BAL	"Sky Glass" toughened & laminated clear glass balustrade.		RC	off-form / precast concrete walls, awnings and skylights.	GLA	low-e double glazed windows, awnings and skylights with retractable external blinds over the east and west facing windows.
	CLA	steel framed cantilevered street awning with prefinished aluminium composite core cladding all round. "Mucobond" or similar. Colour: black.		RF	FC sheets with concrete render.	TER	ventilated terracotta facade system over insulation and off-form structural concrete walls.
	DGL	double skin ventilated glass plenum comprising a double glazed internal skin and a single glazed external skin. The external skin will have a digital image printed on the glazing interlayer.		PFC	mild steel PFC with micaceous iron oxide paint finish. Colour: dark grey.	TER	external terracotta louvres integrated into the terracotta facade cladding. low-e double glazed windows behind.
				SC	circular mild steel columns, core-filled with concrete. paint finish: purple.	RC/CORSE	precast concrete walls with form - liner "ReckM - Corse" or similar. Colour: white.

geoformdesignarchitects ©

design+architecture+interiors

moore park gardens, suite 145-H 780 bourke street reidm nsw 2016
T : 9699 4499 F : 9699 4599
E : architecture@geoform.com.au W : www.geoform.com.au

townplanner
Tony Polvere
Crosby Textor
ph. 02 9232 0311

PCA consultant
Brentnall Technical
Solutions
ph. 02 8065 6365

access consultant
BCA access
solutions
ph. 02 4943 3834

sustainability
Thermal
Environmental Eng.
ph. 02 9588 2756

structural eng
ACE
ph. 02 8397 6506

hydraulic eng
ISE Building
Services
ph. 0451 078 703

traffic engineer
Trafftix
ph. 02 9211 3352
fax. 02 9211 2740

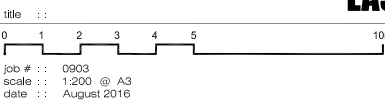
surveyor
John R Holt
Surveyors
ph. 02 9523 2589
fax. 02 9527 4172

amendments	date	description
C	1/8/2016	1. Increased building height 2. Car park spaces reduced to 38 + bicycle 3. Signage increased from 2 signs to 6 signs 4. Added Substation 5. Roof Plant Room increased 6. Patterned Formliner con. finish replaced TER

description
7. Glass image on northern wall changed 8. Rain water tank size reduced 9. Addition of a planter box at the entry area 10. Resize of switch room and plant room 11. Water feature changed to skylight 12. Concrete roof changed to light weight roof

description
7. Glass image on northern wall changed 8. Rain water tank size reduced 9. Addition of a planter box at the entry area 10. Resize of switch room and plant room 11. Water feature changed to skylight 12. Concrete roof changed to light weight roof

title	job #	scale	date
	0903	1:200 @ A3	August 2016



EAST & NORTH ELEVATIONS

drawing is copyright, do not scale drawing, work to figured dimensions only, verify all dimensions on site. Report to geoform any omission, discrepancy or anything that might lead to a result other than the intent of the drawing. In doubt, ask. All work to comply with the BCA and relevant Australian Standards.

drawing number : 3.03
issue : C

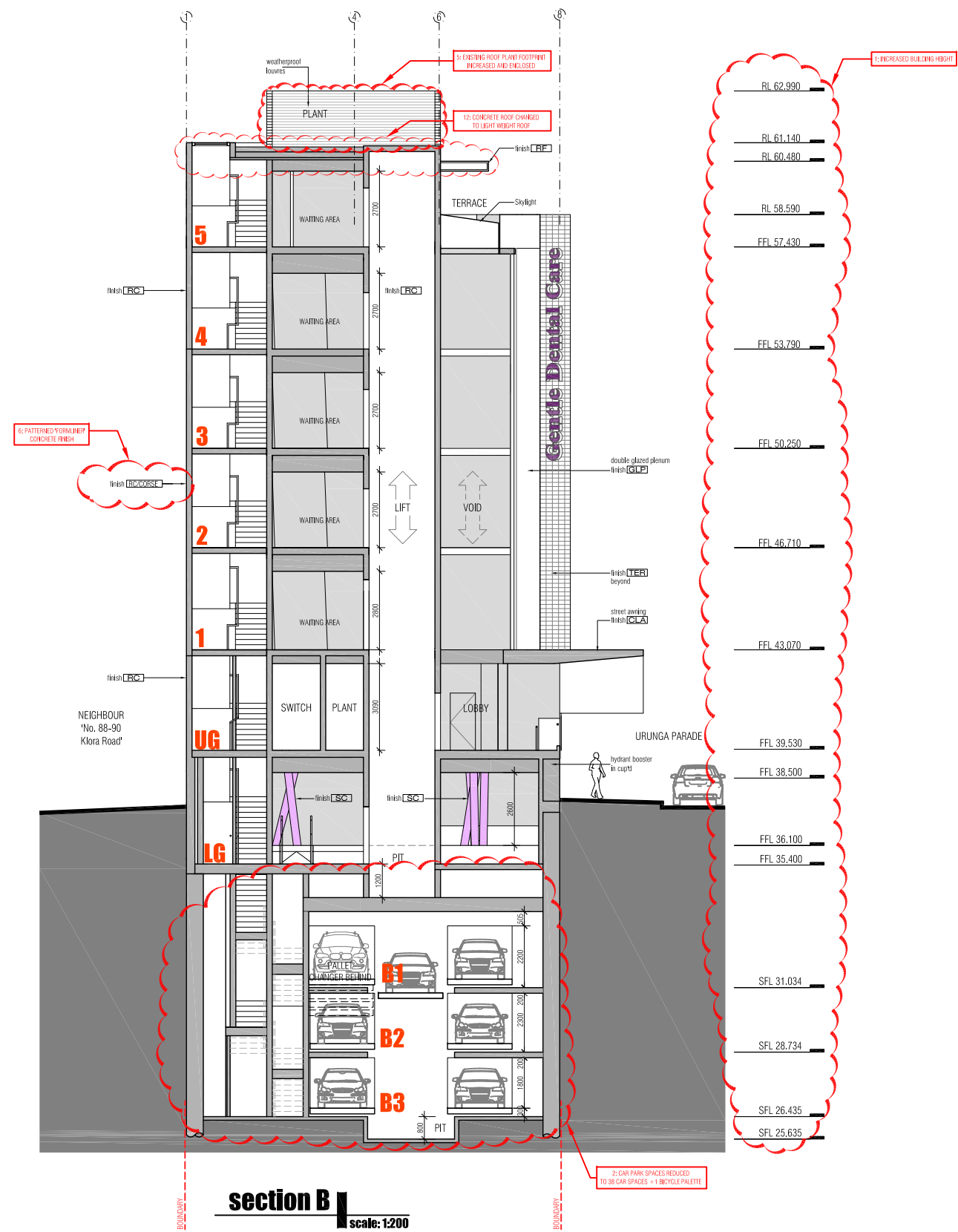
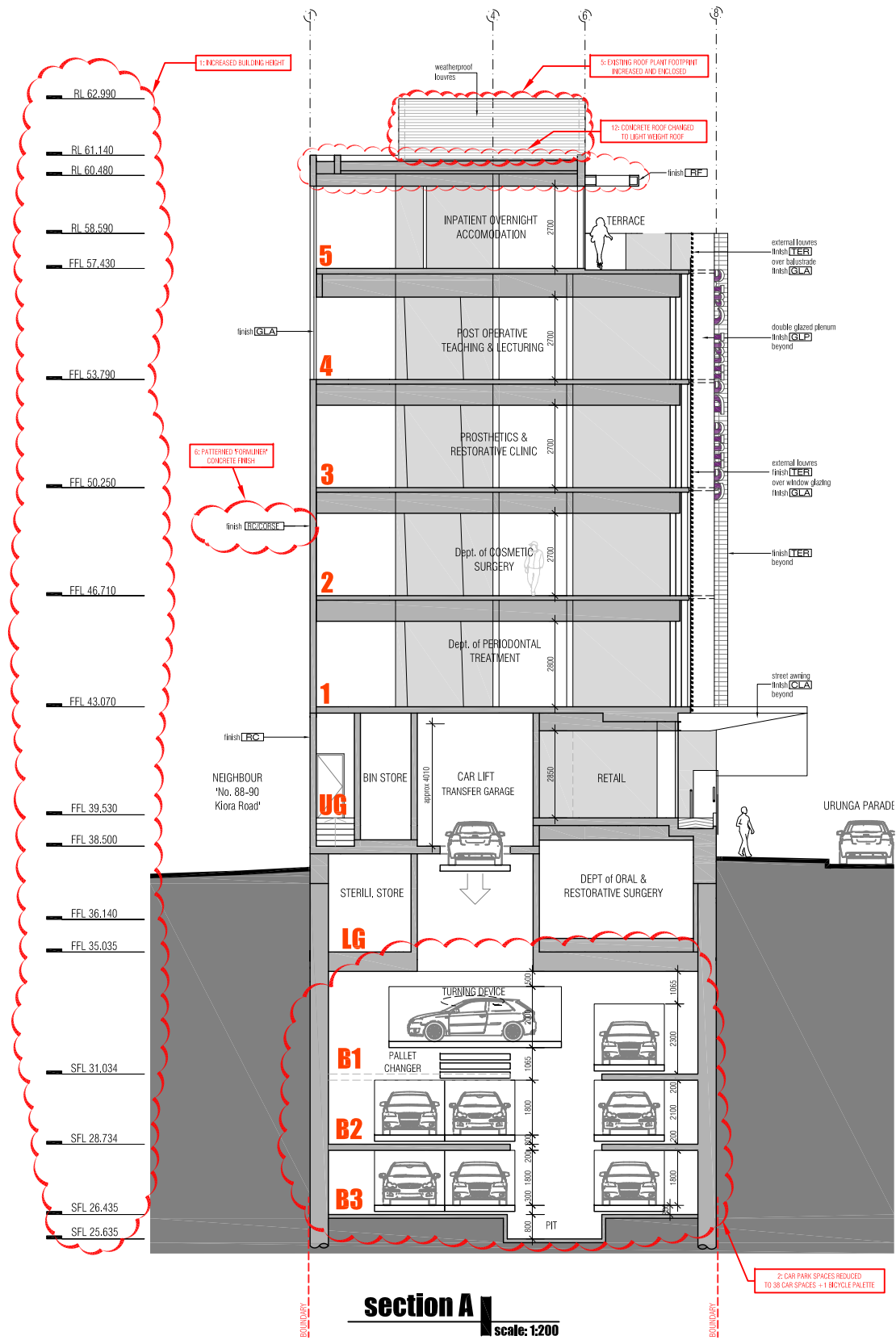
miranda dental hospital - 86 KIORA ROAD, MIRANDA NSW 2228



Signage 5 | **klora road** | **scale: 1:20**

Signage 4 | **klora road** | **scale: 1:50**

Signage 6  **klora road** **scale: 1:20**



FINISHES SCHEDULE							
IMAGE	CODE	DESCRIPTION	IMAGE	CODE	DESCRIPTION	CODE	DESCRIPTION
	BAL	'Sily Glass' toughened & laminated clear glass balustrade.		RC	off-form / precast concrete walls.	GLA	low-e double glazed windows, awnings and skylights.
	CLA	steel framed cantilevered street awning with perforated aluminium composite core cladding all round. 'Mucobond' or similar. Colour: black		RF	Class 1 finish with clear sealer. FC sheets with concrete render.		with retractable external blinds over the east and west facing windows.
	DGL	double skin ventilated glass plenum comprising a double glazed internal skin and a single glazed external skin. The external skin will have a digital image printed on the glazing fineliner.		TER	ventilated terracotta facade system over insulation and off-form structural concrete walls.	PFC	mild steel PFC with micaceous iron oxide paint finish. colour: dark grey
				TER	external terracotta louvers integrated into the terracotta facade cladding, low-e double glazed windows behind.	SC	circular mild steel columns, core-filled with concrete, paint finish: purple
				RC/CORSE	precast concrete walls with form - liner 'Reckl - Corse' or similar Colour: white		

amendments	date	description
C	1/8/2016	1. Increased building height
		2. Car park spaces reduced to 38 + bicycle
		3. Signage increased from 2 signs to 6 signs
		4. Added Substation
		5. Roof Plant Room increased
		6. Patterned Formliner con. finish replaced TER

description
7. Glass image on northern wall changed
8. Rain water tank size reduced
9. Addition of a planter box at the entry area
10. Resize of switch room and plant room
11. Water feature changed to skylight
12. Concrete roof changed to light weight roof

title	scale	date
0 1 2 3 4 5 10m	1:200 @ A3	August 2016

drawing is copyright, do not scale drawing, work to figured dimensions only, verify all dimensions on site. Report to geoform any omission, discrepancy or anything that might lead to a result other than the intent of the drawing. In doubt, ask. All work to comply with the BCA and relevant Australian Standards.

drawing number	issue
4.01	C

amendments	date	description
C	1/8/2016	
1		Increased building height
2		Car park spaces reduced to 38 + bicycle
3		Signage increased from 2 signs to 6 signs
4		Added Substation
5		Roof Plant Room increased
6		Patterned Formliner con. finish replaced TER

description
7. Glass image on northern wall changed
8. Rain water tank size reduced
9. Addition of a planter box at the entry area
10. Resize of switch room and plant room
11. Water feature changed to skylight
12. Concrete roof changed to light weight roof



IMAGE	CODE	DESCRIPTION
BAL	BAL	*Sky Glass* toughened & laminated clear glass balustrade.
CLA	CLA	steel framed cantilevered street awning with prefabricated aluminium composite core cladding all round. *Mucobond* or similar. Colour: black
DGL	DGL	double skin ventilated glass plenum comprising a double glazed internal skin and a single glazed external skin. The external skin will have a digital image printed on the glazing innerlayer.



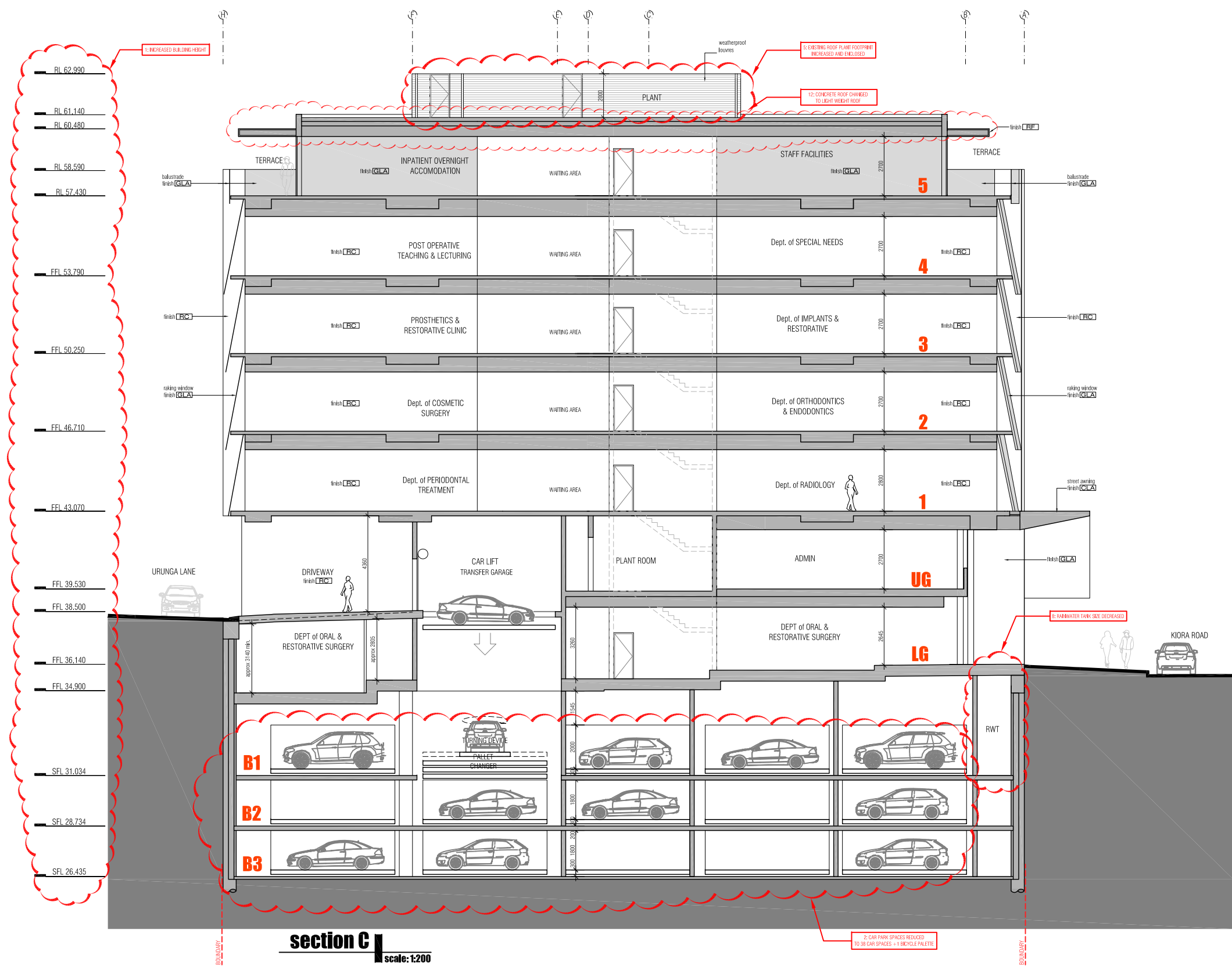
IMAGE	CODE	DESCRIPTION
RC	RC	off-form / precast concrete walls.
RF	RF	Class 1 finish with clear sealer. FC sheets with concrete render.
TER	TER	ventilated terracotta facade system over insulation and off-form structural concrete walls.
TER	TER	external terracotta louvers integrated into the terracotta facade cladding, low-e double glazed windows behind.
RC/CORSE	RC/CORSE	precast concrete walls with form - liner *Reckli - Corse* or similar Colour: white

CODE	DESCRIPTION
GLA	low-e double glazed windows, awnings and skylights, with inextensible external blinds over the east and west facing windows.
PFC	mild steel PFC with micaceous iron oxide paint finish, colour: dark grey
SC	circular mild steel columns, core-filled with concrete, paint finish: purple

title	job #	scale	date
	0903	1:200 @ A3	August 2016

drawing is copyright, do not scale drawing, work to figured dimensions only, verify all dimensions on site. Report to geoform any omission, discrepancy or anything that might lead to a result other than the intent of the drawing. In doubt, ask. All work to comply with the BCA and relevant Australian Standards.

drawing number	issue
4.02	C



section C
scale: 1:200



IMAGE	CODE	DESCRIPTION
BAL	BAL	*Sky Glass* toughened & laminated clear glass balustrade.
CLA	CLA	steel framed cantilevered street awning with prefabricated aluminium composite core cladding all round. *Mucobond* or similar. Colour: black
DGL	DGL	double skin ventilated glass plenum comprising a double glazed internal skin and a single glazed external skin. The external skin will have a digital image printed on the glazing innerlayer.



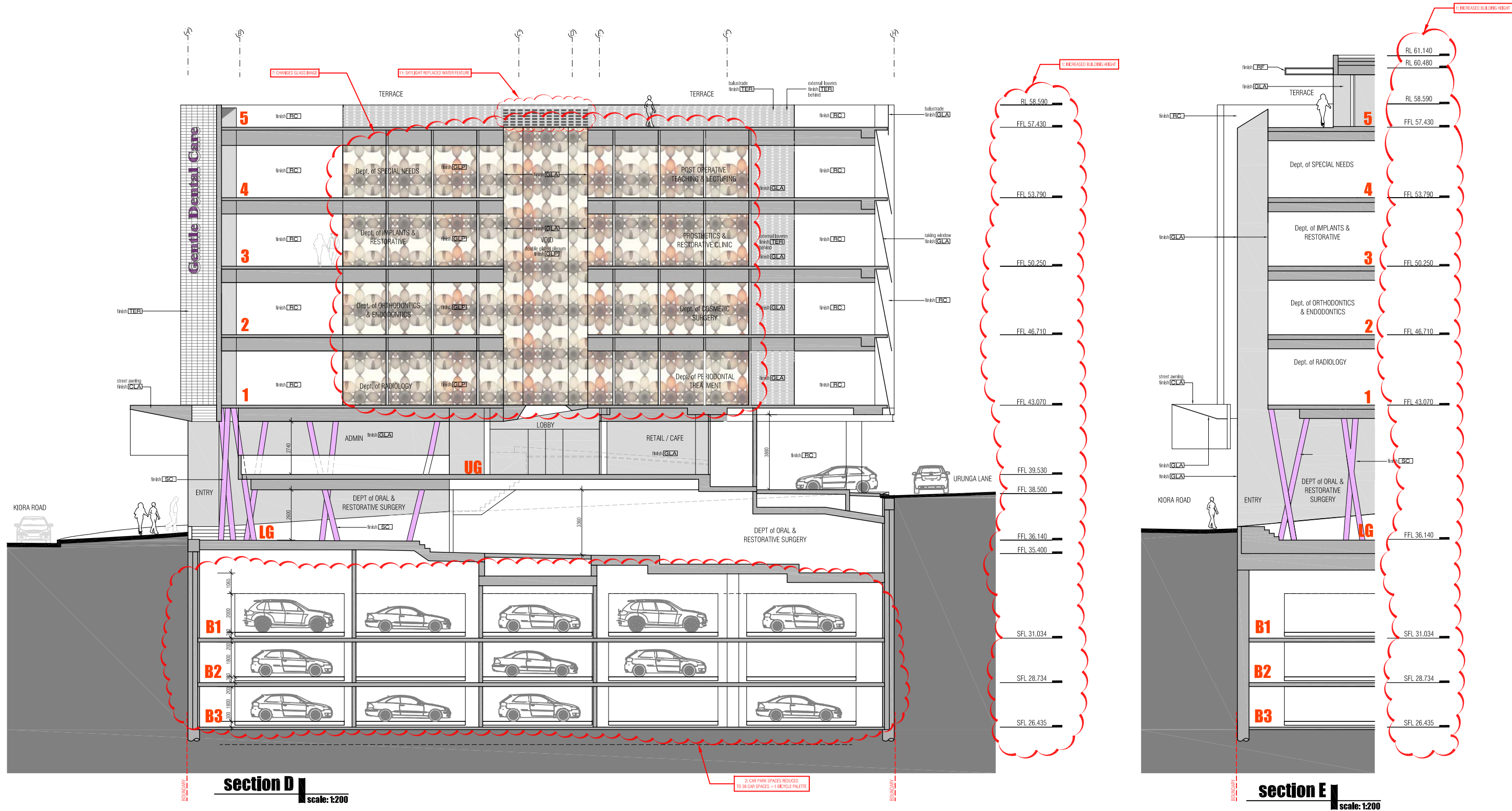
IMAGE	CODE	DESCRIPTION
RC	RC	off-form / precast concrete walls.
RF	RF	Class 1 finish with clear sealer. FC sheets with concrete render.
TER	TER	ventilated terracotta facade system over insulation and off-form structural concrete walls.
TER	TER	external terracotta louvers integrated into the terracotta facade cladding, low-e double glazed windows behind.
RC/CORSE	RC/CORSE	precast concrete walls with form - liner *Reckli - Corse* or similar Colour: white

CODE	DESCRIPTION
GLA	low-e double glazed windows, awnings and skylights, with inextensible external blinds over the east and west facing windows.
PFC	mild steel PFC with micaceous iron oxide paint finish, colour: dark grey
SC	circular mild steel columns, core-filled with concrete, paint finish: purple

title	job #	scale	date
	0903	1:200 @ A3	August 2016

drawing is copyright, do not scale drawing, work to figured dimensions only, verify all dimensions on site. Report to geoform any omission, discrepancy or anything that might lead to a result other than the intent of the drawing. In doubt, ask. All work to comply with the BCA and relevant Australian Standards.

drawing number	issue
4.02	C



FINISHES SCHEDULE							
IMAGE	CODE	DESCRIPTION	IMAGE	CODE	DESCRIPTION	CODE	DESCRIPTION
	BAL	'Sky Glass' toughened & laminated clear glass balustrade.		RC	off-form / precast concrete walls.	GLA	low-e double glazed windows, awnings and skylights, with inoperable external blinds over the east and west facing windows.
	CLA	steel framed cantilevered street awning with perforated aluminium composite core cladding all round. 'Macobond' or similar. Colour: black		RF	Class 1 finish with clear sealer. FC sheets with concrete render.	PFC	mild steel PFC with micaceous iron oxide paint finish, colour: dark grey
	DGL	double skin ventilated glass plenum comprising a double glazed internal skin and a single glazed external skin. The external skin will have a digital image printed on the glazing fineliner.		TER	ventilated terracotta facade system over insulation and off-form structural concrete walls.	SC	circular mild steel columns, core-filled with concrete, paint finish: purple
				TER	external terracotta louvers integrated into the terracotta facade cladding, low-e double glazed windows behind.		
				RC/CORSE	precast concrete walls with form - liner 'Reckli - Corse' or similar Colour: white		

amendments	date	description
C	1/8/2016	1. Increased building height

amendments	date	description
		2. Car park spaces reduced to 38 + bicycle
		3. Signage increased from 2 signs to 6 signs
		4. Added Substation
		5. Roof Plant Room increased
		6. Patterned Formliner con. finish replaced TER

amendments	date	description
		7. Glass image on northern wall changed
		8. Rain water tank size reduced
		9. Addition of a planter box at the entry area
		10. Resize of switch room and plant room
		11. Water feature changed to skylight
		12. Concrete roof changed to light weight roof

title	scale	date
0903	1:200 @ A3	August 2016

10m drawing is copyright, do not scale drawing, work to figured dimensions only, verify all dimensions on site. Report to geoform any omission, discrepancy or anything that might lead to a result other than the intent of the drawing. In doubt, ask. All work to comply with the BCA and relevant Australian Standards.

drawing number	issue
4.03	C



geoformdesign**architects** ©

design+architecture+interiors

moore park gardens, suite 145-H 780 bourke street redfern nsw 2016
 T :: 9699 4499 F :: 9699 4599
 E :: architecture@geoform.com.au W :: www.geoform.com.au

View from Urunga Parade

3D RENDER IMAGE

drawing is copyright, do not scale drawing, work to figured dimensions only, verify all dimensions on site, Report to geoform any omission, discrepancy or anything that might lead to a result other than the intent of the drawing. If in doubt, ask, All work to comply with the BCA and relevant Australian Standards.

drawing number : :

issue : :

5.01

A

miranda dental hospital - 86 KIORA ROAD, MIRANDA NSW 2228



geoformdesign**architects** ©

design+architecture+interiors

moore park gardens, suite 145-H 780 bourke street redfern nsw 2016
 T :: 9699 4499 F :: 9699 4599
 E :: architecture@geoform.com.au W :: www.geoform.com.au

View from Kiora Road

3D RENDER IMAGE

drawing is copyright, do not scale drawing, work to figured dimensions only, verify all dimensions on site, Report to geoform any omission, discrepancy or anything that might lead to a result other than the intent of the drawing. If in doubt, ask, All work to comply with the BCA and relevant Australian Standards.

drawing number : :

issue : :

5.02

A

miranda dental hospital - 86 KIORA ROAD, MIRANDA NSW 2228