

The Centre of Excellence

The proposed Centre of Excellence is a training and administration facility to be included as part of the ET stand rejuvenation at the Southern Cross Stadium. The facility will wrap around the back of the existing ET Stand and inhabit the residual spaces between the ET Stand and the Southern Stand along the west of the stadium. It is intended that this facility will integrate with the existing facilities in both the ET & Southern Stands. The proposed floorspace and facilities are generally approved in the existing concept approval.

The proposed facilities include:

- a new public plaza at the stadium entry.
- a new public promenade along the western side of the stadium adjacent to the existing creek. This will include pop up catering facilities on game day.
- a 'Hall of Fame' for Sutherlandshire located within an indoor facility but extending out into the proposed new public promenade and foreshore parklands
- upgraded food and beverage facilities and associated amenities
- improved player facilities on game day
- improved green keeper, back of house, and associated facilities
- club administration offices
- a new training facility of world class standard intended for use by multiple sports
- upgraded corporate box and associated facilities, plus additional commercial areas
- additional covered seating at the on-field side of the facility.
- covered parking for 50 cars as already approved in the current concept plan

The rejuvenation of the stadium will greatly improve the appearance of the site which is located on a primary road leading into Cronulla. The upgraded facility will improve the relationship between the stadium and its immediate environment. It will provide a landmark building, and create a 'sense of place' that reinforces the location as a home for the Sharks into the future.



Indicative sketch view of the stadium entry plaza and Centre of Sports Excellence

The proposed training facilities & brief

The facility now proposed at the Remondis Stadium site provides approximately 7300m2 GFA of flexible floor space, as denotred below:

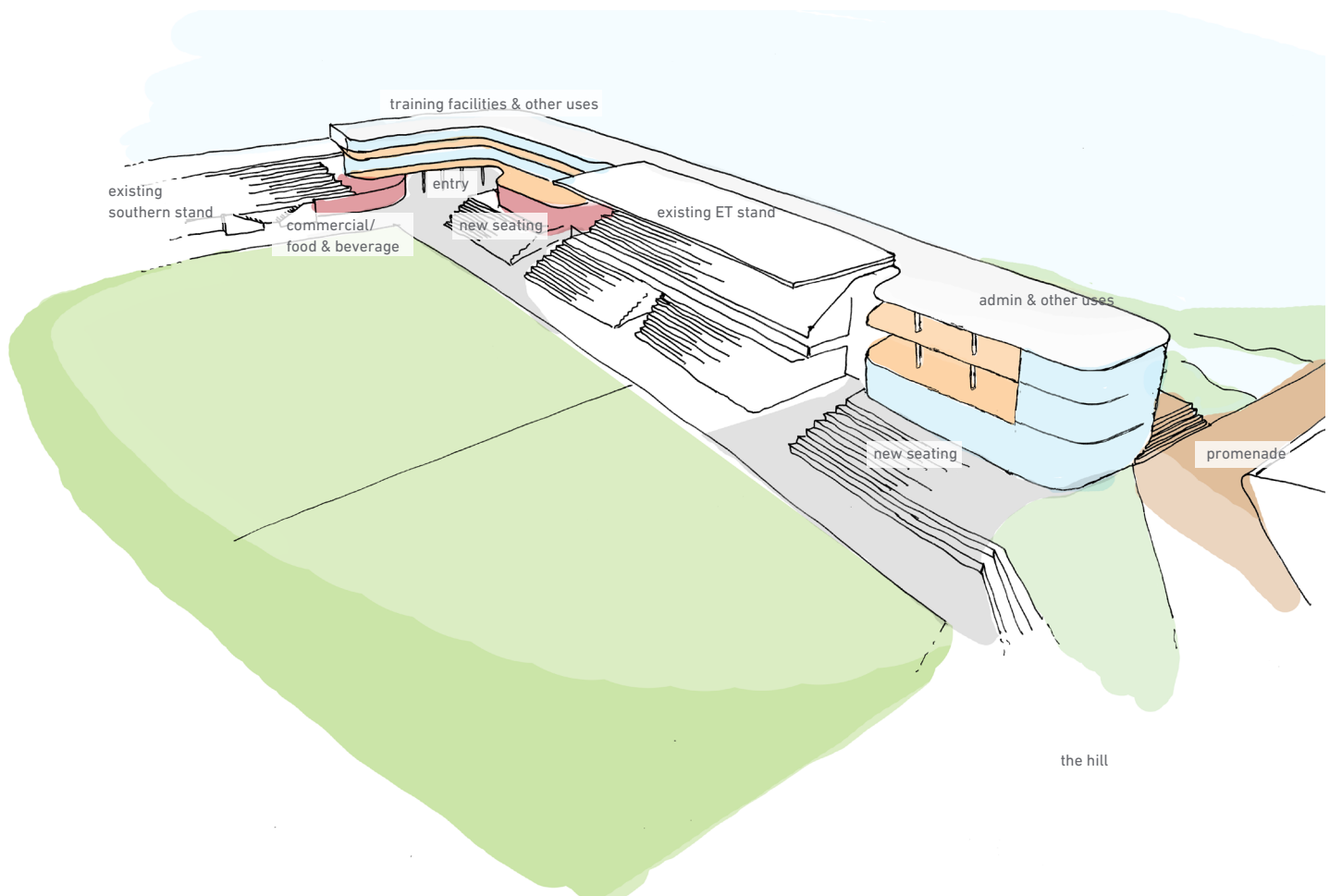
COE Levels																					Total GFA	Total GBA
Level 1																					1580	4922
Level 2																					1309	1540
Level 3																					2269	2669
Level 4																					2142	2520
Total COE																					7300	11651

Note: Areas exclude stadium terraces, associated seating & circulation .



World class training facility for the use of multiple sporting organisations

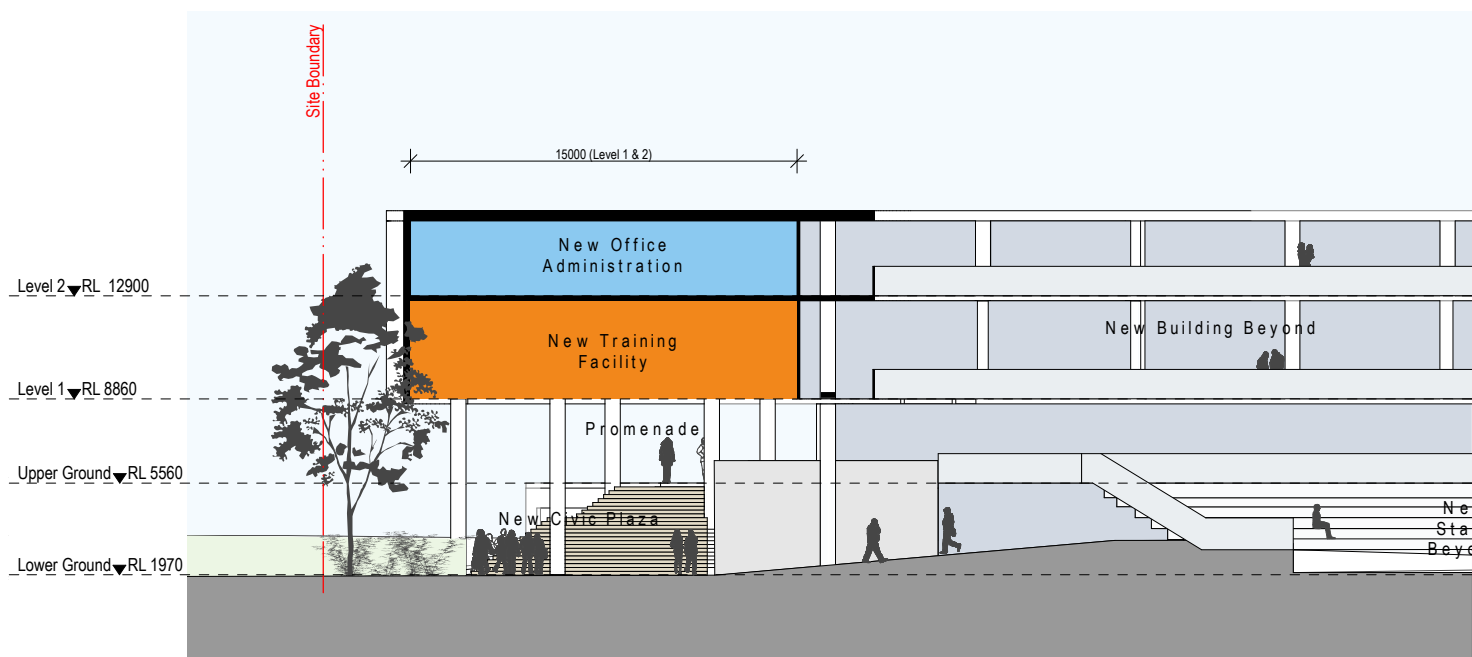
Indicative massing diagram



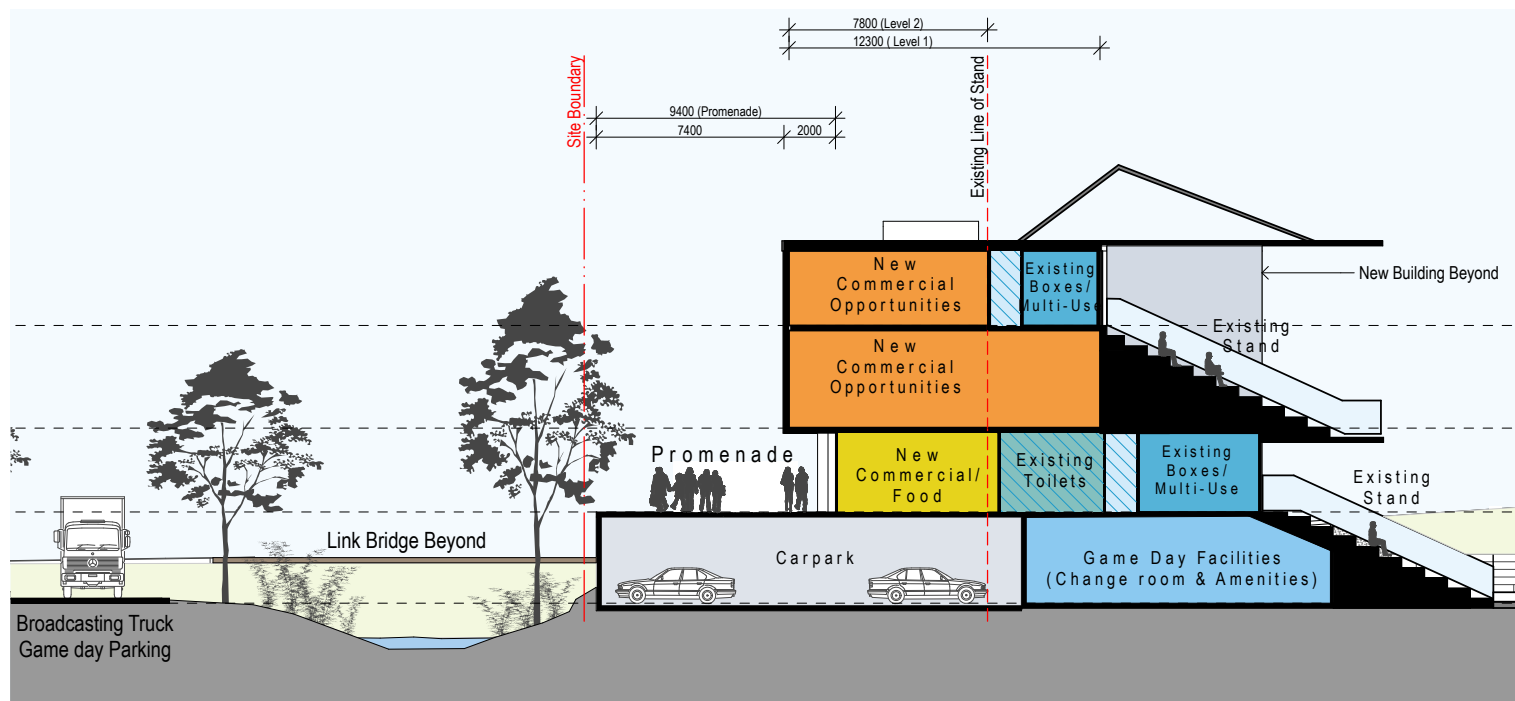
Benefits of the proposal

- new training facilities can link directly into existing club gym/ southern stand + fields
- maximises/ reconfigures the existing uses under the ET stand
- allows for a rejuvenated ET stand & stadium entry
- improves the club branding
- create a new civic space at the western edge of stand
- 50 car spaces already approved in concept approved
- additional floorspace and stands generally approved in concept approval
- ability to provide additional under cover seating on field side of new facility

Indicative sections through the proposed centre of excellence



Section A through stadium entry plaza



Section B through existing stand and new facilities