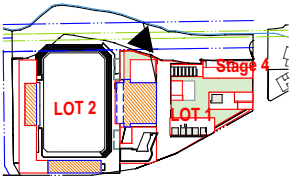


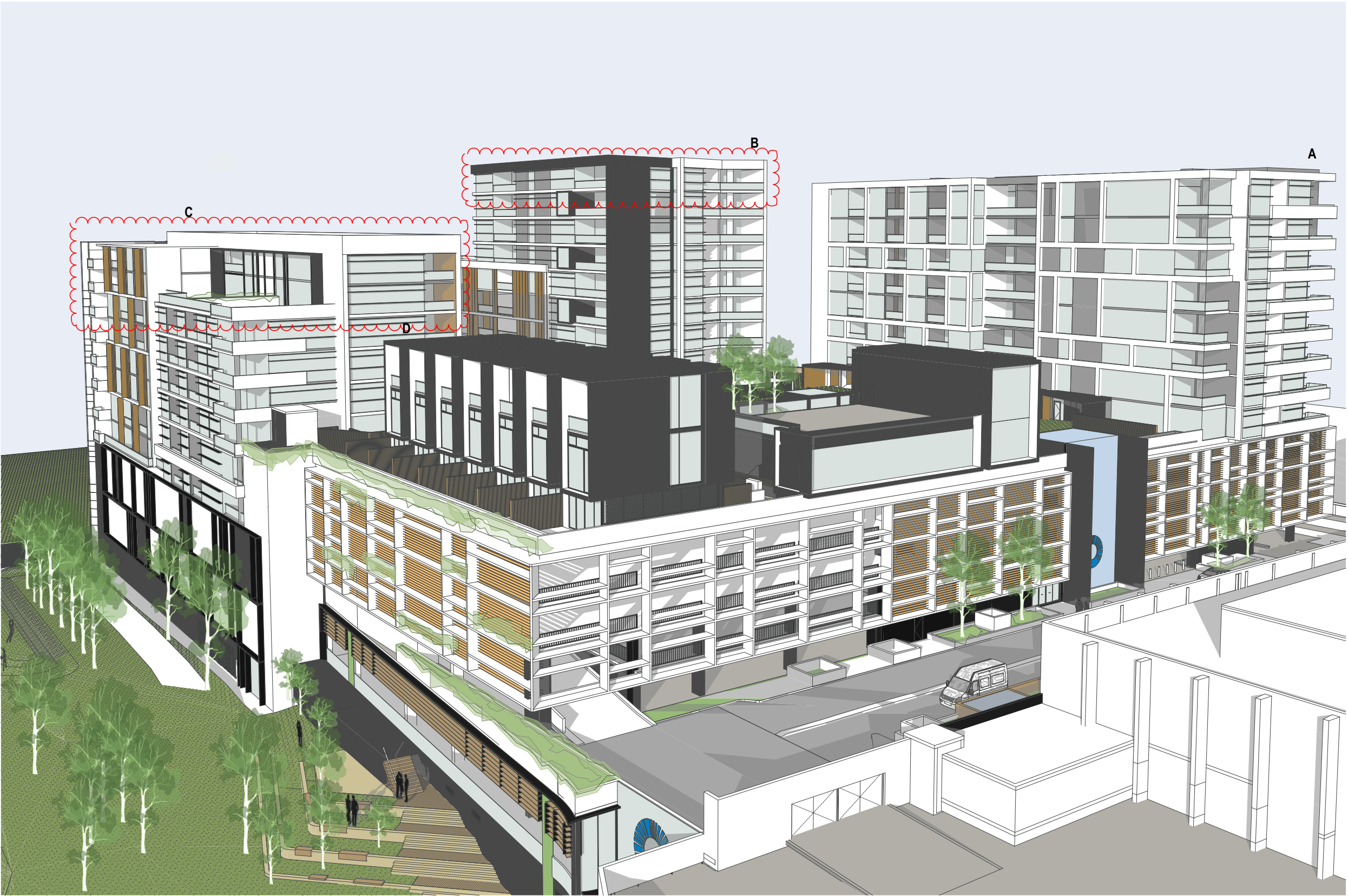
NOTES
THIS DRAWING IS THE COPYRIGHT © OF TURNER. NO REPRODUCTION WITHOUT PERMISSION. UNLESS NOTED OTHERWISE THIS DRAWING IS NOT FOR CONSTRUCTION. ALL DIMENSIONS AND LEVELS ARE TO BE CHECKED ON SITE PRIOR TO THE COMMENCEMENT OF WORK. BEFORE TURNER OF ANY DISCREPANCIES FOR CLARIFICATION BEFORE PROCEEDING WITH WORK. CHANGES ARE NOT TO BE SCALED. USE ONLY PLOTTED DIMENSIONS. REFER TO CONSULTANT DOCUMENTATION FOR FURTHER INFORMATION. DWG, PC AND BAA FILES ARE UNCONTROLLED DOCUMENTS AND ARE ISSUED FOR INFORMATION ONLY.

DLCS Quality Estimated Company 180 800 2000, License Number 4192
Notified Architect Nicholas Turner 4895, 489 81 584 584 911

KEY PLAN



LEGEND



Rev.	Date	Approved by	Revision Notes
J	15/06/17	JM	FOR CLIENT REVIEW
K	23/06/17	JM	Updated S7SW Submission
J	12.07.17	JM	Updated S7SW Submission

CLIENT
Bluestone Capital Ventures No. 1 PL
Suite 1, Level 6, 71 Macquarie St Sydney NSW 2000 AU
RETAIL ARCHITECTS
HCR Blue Grid
Level 1, 110 Walker Street, North Sydney NSW 2060 AU
Project Title

Bay Central Uplift - Concept Plan
Captain Cook Drive Woollooware NSW 2230 AU

Drawing Title
3D VIEWS
Perspective View 08

Scale	Project No.	14020	Drawn by	North
1:13.58, 1:5000 @A1, 50% @A3			PM, AT, JM	
Status	Dwg No.	S6-A-900-067	Rev	J
S7SW Submission				

turner
Level 7, ONE Oxford Street
Sydney NSW 2000
Australia
T +61 2 8668 0000
F +61 2 8668 0088
turnerstudio.com.au

MAP SHOWING CAMERA LOCATIONS

- VIEW 1 - Captain Cook Drive (Looking East)
Photo taken from surveyed point on kerb.
- VIEW 2 - Captain Cook Drive (Looking East)
Photo taken from surveyed point on kerb.
- VIEW 3 - Captain Cook Drive (Looking East)
Photo taken from surveyed point on kerb.
- VIEW 4 - Wooloware Drive (Looking North)
Photo taken on kerb line perpendicular to residential boundary of two homes.
- VIEW 5 - Bate Bay Road (Looking West)
Photo taken on kerb line perpendicular to the end of a residential wall.
- VIEW 6 - Captain Cook Bridge (Looking South East)
Photo taken on pedestrian crossing at high point of bridge
- VIEW 7 - Dolls Point (Looking South)
Photo taken from edge of picnic shelter
- VIEW 8 - Water (Looking South)
Closest accessible point by boat (oyster leases)
- VIEW 9 - Water (Looking South)
Location that site could be viewed from Towra Point
- VIEW 10 - Water (Looking South)
Location close to beach at Towra Point reserve
- VIEW 11 & 11A - Castlewood Ave (Looking North)
Location from 2nd level balcony of residence



NOTES
THIS DRAWING IS THE COPYRIGHT © OF TURNER. NO REPRODUCTION WITHOUT PERMISSION. UNLESS NOTED OTHERWISE THIS DRAWING IS NOT FOR CONSTRUCTION. ALL DIMENSIONS AND LEVELS ARE TO BE CHECKED ON SITE PRIOR TO THE COMMENCEMENT OF WORK. BEFORE TURNER OF ANY DISCREPANCIES FOR CLARIFICATION BEFORE PROCEEDING WITH WORK. CHANGES ARE NOT TO BE SCALED. USE ONLY PLOTTED DRAWINGS. REFER TO CORRELATING DOCUMENTATION FOR FURTHER INFORMATION. DWG, PC AND BAA FILES ARE UNCONTROLLED DOCUMENTS AND ARE ISSUED FOR INFORMATION ONLY.

DLCS Quality Estimated Company 150 800 2000, License Number 4193
Notwithstanding Architect Nicholas Turner 4895, 489 81 584 584 911

KEY PLAN

LEGEND



Rev.	Date	Approved by	Revision Notes
A	23/09/16	JM	For S7SW Submission
B	01/12/16	JM	Updated S7SW Submission
C	12.07.17	JM	Updated S7SW Submission

CLIENT
Bluestone Capital Ventures No. 1 PL
Suite 1, Level 6, 71 Macquarie St Sydney NSW 2000 AU

RETAL ARCHITECTS
HCR Roca Dandrey
Level 1, 110 Walker Street, North Sydney NSW 2060 AU

Project Title
Bay Central Uplift - Concept Plan
Captain Cook Drive Wooloware NSW 2230 AU

Drawing Title
3D VIEWS
Perspective Locator Plan

Scale	Project No.	14020	Drawn by	North
NTS			PM, AT, JM	
Status	Dwg No.	S6-A-900-090	Rev	C
S7SW Submission				

turner

Level 7, ONE Oxford Street
Sydney NSW 2000
Australia

T +61 2 8668 0000
F +61 2 8668 0088
turnerstudio.com.au



VIEW LOOKING EAST ALONG CAPTAIN COOK DRIVE WITH STAGE 1 IN THE FOREGROUND.

NOTES
THIS DRAWING IS THE COPYRIGHT © OF TURNER. NO REPRODUCTION WITHOUT PERMISSION. UNLESS NOTED OTHERWISE THIS DRAWING IS NOT FOR CONSTRUCTION. ALL DIMENSIONS AND LEVELS ARE TO BE CHECKED ON SITE PRIOR TO THE COMMENCEMENT OF WORK. BEFORE TURNER OF ANY DISCREPANCIES FOR CLARIFICATION BEFORE PROCEEDING WITH WORK. CHANGES ARE NOT TO BE SCALED. USE ONLY PLOTTED DRAWINGS. REFER TO CORRESPONDING DOCUMENTATION FOR FURTHER INFORMATION. DWG, PC AND BAA FILES ARE UNCONTROLLED DOCUMENTS AND ARE ISSUED FOR INFORMATION ONLY.

DLCS Quality Estimated Company 150 800 2000, License Number 4192
Notwithstanding Architect Nicholas Turner 4895, 4896, 4897, 4898, 4899, 4900, 4901, 4902, 4903, 4904, 4905, 4906, 4907, 4908, 4909, 4910, 4911

KEY PLAN

LEGEND



Rev.	Date	Approved by	Revision Notes
A	23/09/16	JM	For S7SW Submission
B	01/12/16	JM	Updated S7SW Submission
C	12.07.17	JM	Updated S7SW Submission

CLIENT
Bluestone Capital Ventures No. 1 PL
Suite 1, Level 6, 71 Macquarie St Sydney NSW 2000 AU

RETAIL ARCHITECTS
HCR Risa Architects
Level 1, 110 Walker Street, North Sydney NSW 2060 AU

Project Title
Bay Central Uplift - Concept Plan
Captain Cook Drive Woollooware NSW 2230 AU

Drawing Title
3D VIEWS
Perspective CGI View 01

Scale	Project No.	Drawn by	North
NTS	14020	PM, AT, JM	
Status	Dwg No.	Rev	
S7SW Submission	S6-A-900-091	C	

turner
Level 7, ONE Oxford Street
Sydney NSW 2000
Australia
T +61 2 8668 0000
F +61 2 8668 0088
turnerstudio.com.au

NOTES
THIS DRAWING IS THE COPYRIGHT © OF TURNER. NO REPRODUCTION WITHOUT PERMISSION. UNLESS NOTED OTHERWISE THIS DRAWING IS NOT FOR CONSTRUCTION. ALL DIMENSIONS AND LEVELS ARE TO BE CHECKED ON SITE PRIOR TO THE COMMENCEMENT OF WORK. REPORT TURNER OF ANY DISCREPANCIES FOR CLARIFICATION BEFORE PROCEEDING WITH WORK. CHANGES ARE NOT TO BE SCALED. USE ONLY PLOTTED DRAWINGS. REFER TO CONSULTANT DOCUMENTATION FOR FURTHER INFORMATION. DWG, PC AND BAA FILES ARE UNCONTROLLED DOCUMENTS AND ARE ISSUED FOR INFORMATION ONLY.

DLCS Quality Estimated Company ISO 9001:2008, License Number 4192
Notified Architect Nicholas Turner 4895, ABN 81 584 584 911

KEY PLAN

LEGEND



DETAIL VIEW LOOKING TOWARD RETAIL CENTRE FROM CAPTAIN COOK DRIVE, WITH PODIUM OF BUILDING A ABOVE AND BUILDING B BEYOND.



Rev.	Date	Approved by	Revision Notes
A	23/09/16	JM	For S7SW Submission
B	01/12/16	JM	Updated S7SW Submission
C	12.07.17	JM	Updated S7SW Submission

CLIENT
Bluestone Capital Ventures No. 1 PL
Suite 1, Level 6, 71 Macquarie St Sydney NSW 2000 AU

RETAIL ARCHITECTS
HCR Rice Davidson
Level 1, 110 Walker Street, North Sydney NSW 2060 AU

Project Title
Bay Central Uplift - Concept Plan
Captain Cook Drive Woollooware NSW 2230 AU

Drawing Title
3D VIEWS
Perspective CGI View 02

Scale	Project No.	14020	Drawn by	North
NTS			PM, AT, JM	
Status	Dwg No.	S6-A-900-092	Rev	C
S7SW Submission				

turner
Level 7, ONE Oxford Street
Sydney NSW 2010
Australia
T +61 2 8668 0000
F +61 2 8668 0088
turnerstudio.com.au



VIEW LOOKING EAST ALONG CAPTAIN COOK DRIVE, WITH THE PROPOSED HOTEL AND BUILDING A BEYOND.

NOTES
THIS DRAWING IS THE COPYRIGHT © OF TURNER. NO REPRODUCTION WITHOUT PERMISSION. UNLESS NOTED OTHERWISE THIS DRAWING IS NOT FOR CONSTRUCTION. ALL DIMENSIONS AND LEVELS ARE TO BE CHECKED ON SITE PRIOR TO THE COMMENCEMENT OF WORK. BEFORE TURNER OF ANY DISCREPANCIES FOR CLARIFICATION BEFORE PROCEEDING WITH WORK. CHANGES ARE NOT TO BE SCALED. USE ONLY PLOTTED DRAWINGS. REFER TO CONSULTANT DOCUMENTATION FOR FURTHER INFORMATION. DWG, PC AND BAA FILES ARE UNCONTROLLED DOCUMENTS AND ARE ISSUED FOR INFORMATION ONLY.

DLCS Quality Estimated Company 150 800 2000, License Number 4192
Notified Architect Nicholas Turner 4895, ABN 81 584 584 911

KEY PLAN

LEGEND



Rev.	Date	Approved by	Revision Notes
A	23/09/16	JM	For S7SW Submission
B	01/12/16	JM	Updated S7SW Submission
C	12.07.17	JM	Updated S7SW Submission

CLIENT
Bluestone Capital Ventures No. 1 PL
Suite 1, Level 6, 71 Macquarie St Sydney NSW 2000 AU

RETAL ARCHITECTS
ROR ROR Architects
Level 1, 110 Walker Street, North Sydney NSW 2060 AU

Project Title
Bay Central Uplift - Concept Plan
Captain Cook Drive Woollooware NSW 2230 AU

Drawing Title
3D VIEWS
Perspective CGI View 03

Scale	Project No.	Drawn by	North
NTS	14020	PM, AT, JM	
Status	Dwg No.	Rev	
S7SW Submission	S6-A-900-093	C	

turner
Level 7, ONE Oxford Street
Sydney NSW 2000
Australia
T +61 2 8668 0000
F +61 2 8668 0088
turnerstudio.com.au