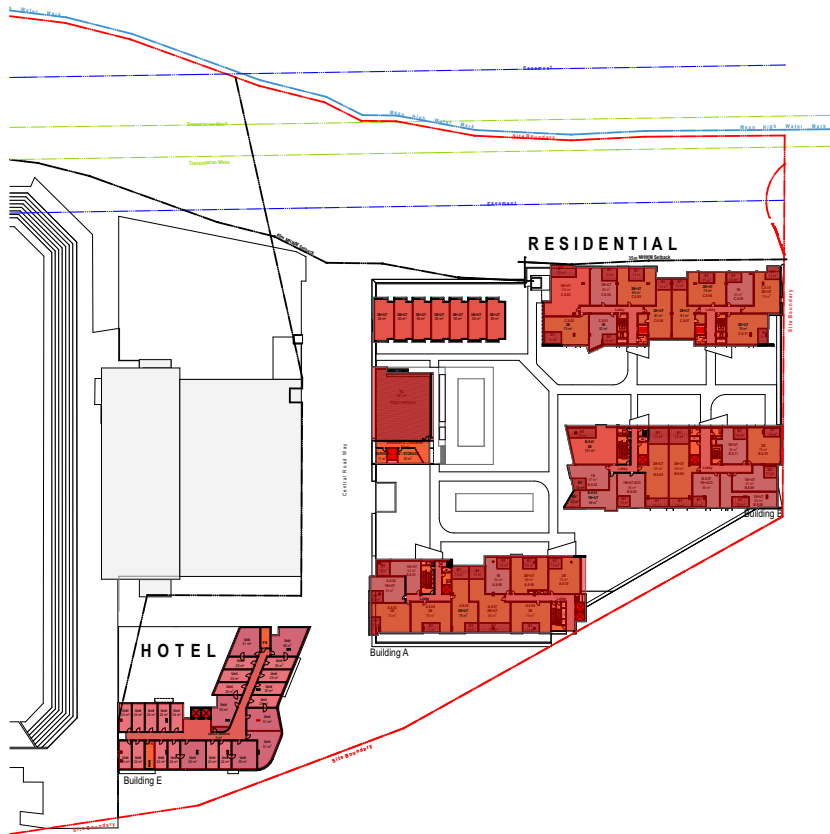


01 Zoning Diagram Level 7
1:1000



02 Zoning Diagram Level 8
1:1000



03 Typical Tower Level
1:1000

NOTES
THIS DRAWING IS THE COPYRIGHT © OF TURNER. NO REPRODUCTION WITHOUT PERMISSION. UNLESS NOTED OTHERWISE THIS DRAWING IS NOT FOR CONSTRUCTION. ALL DIMENSIONS AND LEVELS ARE TO BE CHECKED ON SITE PRIOR TO THE COMMENCEMENT OF WORK. REPORT TURNER OF ANY DISCREPANCIES FOR CLARIFICATION BEFORE PROCEEDING WITH WORK. CHANGES ARE NOT TO BE SCALED. USE ONLY PLOTTED DIMENSIONS. REFER TO CONSULTANT DOCUMENTATION FOR FURTHER INFORMATION. DWG, PC AND BAA FILES ARE UNCONTROLLED DOCUMENTS AND ARE ISSUED FOR INFORMATION ONLY.

DLCS Quality Estimated Company 180 800 2000, License Number 4193
Notified Architect Nicholas Turner 4895, ABN 81 584 584 911

KEY PLAN

LEGEND

- PRIVATE RESTRICTED ACCESS
- UNCONTROLLED PUBLIC ACCESS
- CAR PARKS



Rev.	Date	Approved by	Revision Notes
A	16.07.17	JM	For Information
B	12.07.17	JM	Updated S7SW Submission
C	04.08.17	JM	Updated S7SW Submission

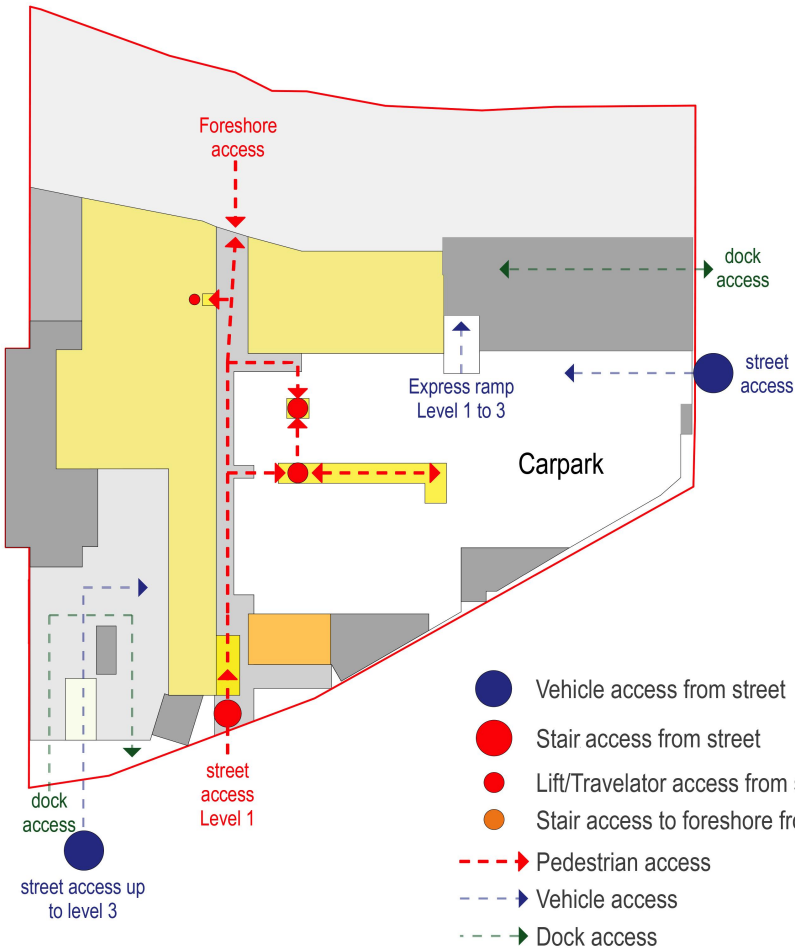
CLIENT
Bluestone Capital Ventures No. 1 PL
Suite 1, Level 6, 71 Macquarie St Sydney NSW 2000 AU
RETAIL ARCHITECTS
HCR Rice Studio
Level 1, 110 Walker Street, North Sydney NSW 2060 AU

Project Title
Bay Central Uplift - Concept Plan
Captain Cook Drive Woollooware NSW 2230 AU

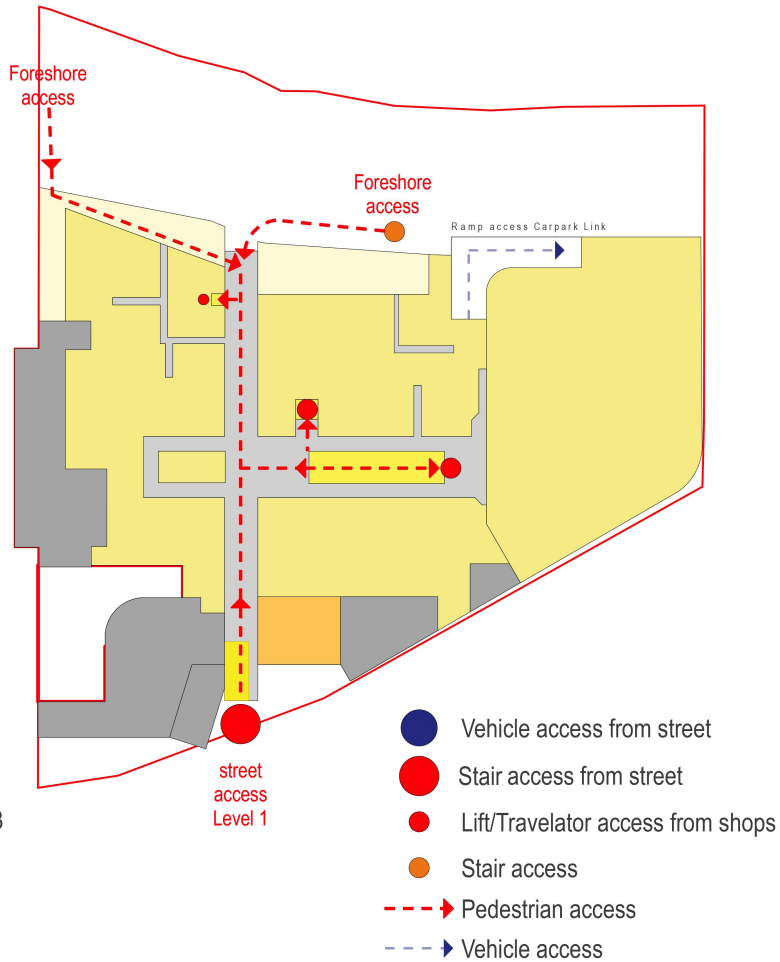
Drawing Title
Zoning Diagrams
Identifying Public & Private Areas

Scale	Project No.	Drawn by	North
1:1000, 1:500 @A1, 50% @A3	14020	PM, AT, JM	↗
Status	Dwg No.	Rev	
S7SW Submission	S6-A-723-002	C	

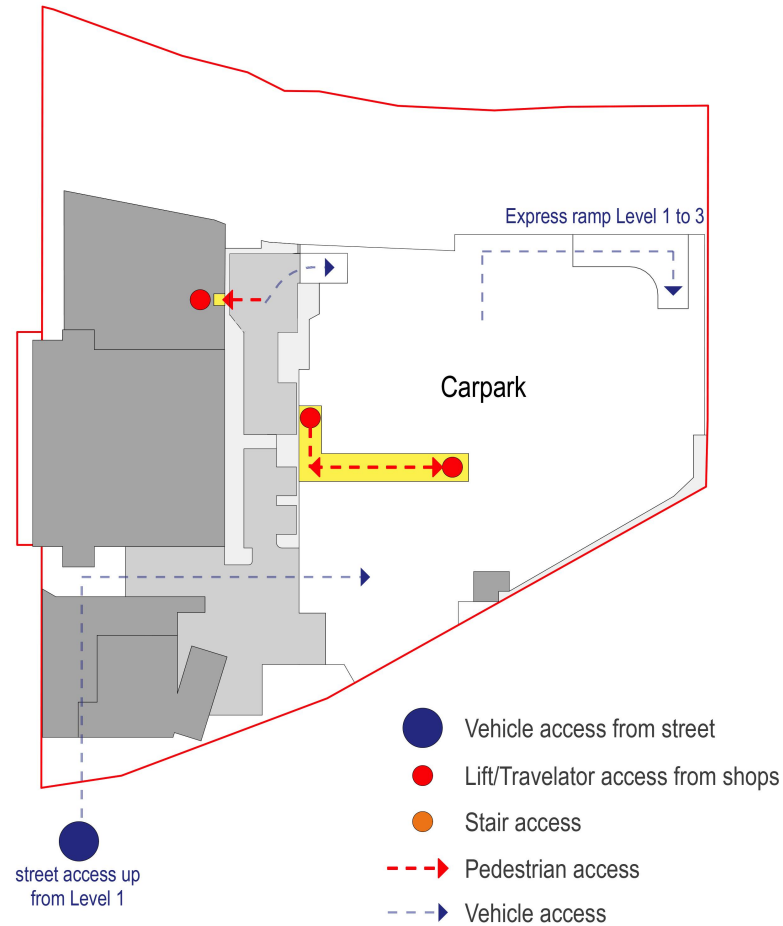
turner.
Level 7, ONE Oxford Street
Sydney NSW 2010
Australia
T +61 2 8668 0000
F +61 2 8668 0088
turnerstudio.com.au



RETAIL ACCESS - LEVEL 1



RETAIL ACCESS - LEVEL 2



RETAIL ACCESS - LEVEL 3



Rev.	Date	Approved by	Revision Notes
A	25.05.17	JM	For Information
B	23.06.17	JM	For S7SW Submission
C	12.07.17	JM	Updated S7SW Submission

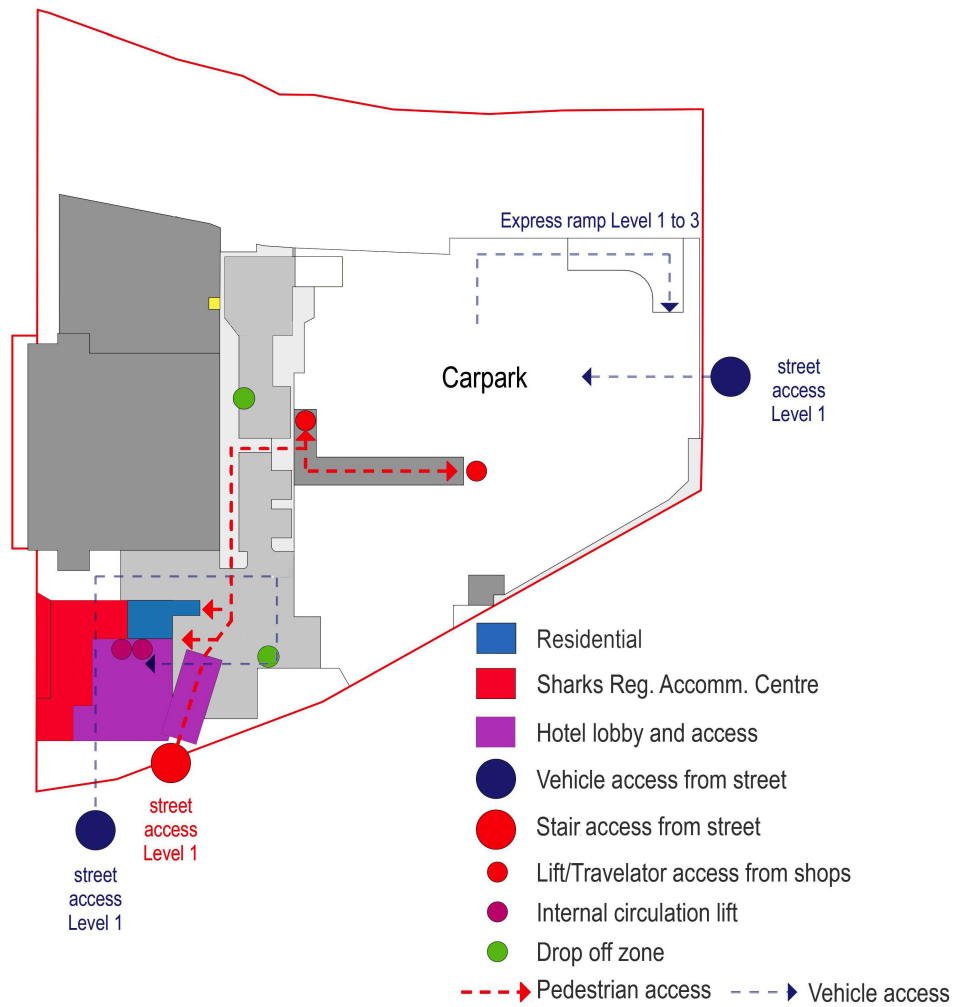
CLIENT
Bluestone Capital Ventures No. 1 PL
Suite 1, Level 6, 71 Macquarie St Sydney NSW 2000 AU

RETAIL ARCHITECTS
HCR Roca Architects
Level 1, 110 Walker Street, North Sydney NSW 2060 AU

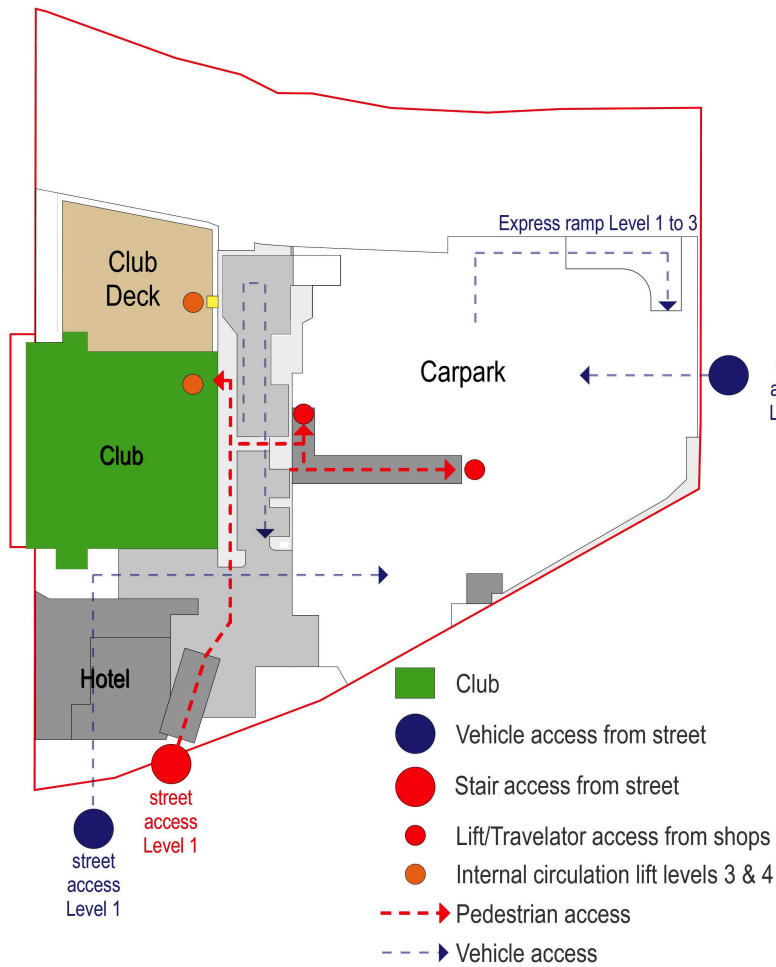
Project Title
Bay Central Uplift - Concept Plan
Captain Cook Drive Woollooware NSW 2230 AU

Drawing Title
Report Diagrams - Retail Access

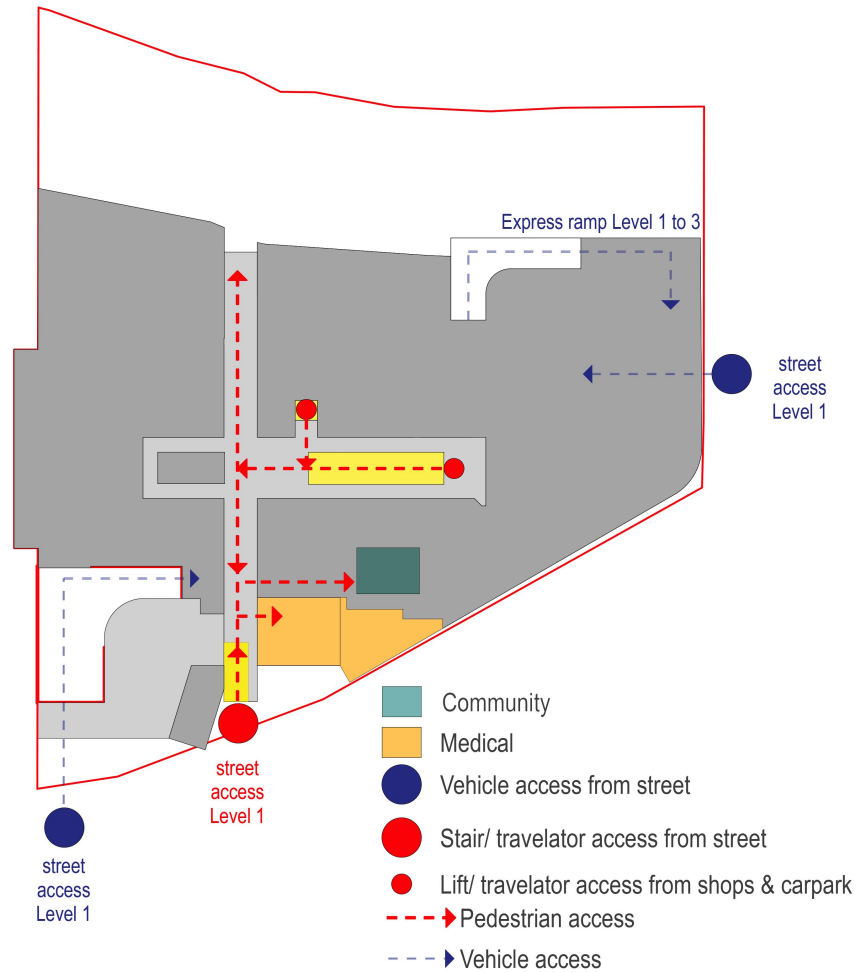
Scale	Project No.	Drawn by	North
1:1 @A1, 50% @A3	14020	PM, AT, JM	↑
Status	Dwg No.	Rev	
S7SW Submission	S6-A-725-001	C	



HOTEL &
SHARKS FACILITIES
LEVEL 3



CLUB
LEVEL 3



MEDICAL &
COMMUNITY
LEVEL 2



Rev.	Date	Approved by	Revision Notes
A	25.05.17	JM	For Information
B	23.06.17	JM	For S7SW Submission
C	12.07.17	JM	Updated S7SW Submission
D	04.08.17	JM	Updated S7SW Submission

CLIENT
Bluestone Capital Ventures No. 1 PL
Suite 1, Level 6, 71 Macquarie St Sydney NSW 2000 AU
RETAIL ARCHITECTS
HCR Rice Davidson
Level 1, 110 Walker Street, North Sydney NSW 2060 AU
Project Title

Bay Central Uplift - Concept Plan
Captain Cook Drive Woollooware NSW 2230 AU

Drawing Title
Report Diagrams - Club / Hotel / Medical Access

Scale	Project No.	Drawn by	North
1:1 @A1, 50% @A3	14020	PM, AT, JM	↑
Status	Dwg No.	Rev	
S7SW Submission	S6-A-726-002	D	