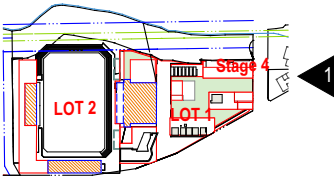


NOTES
THIS DRAWING IS THE COPYRIGHT © OF TURNER. NO REPRODUCTION WITHOUT PERMISSION. UNLESS NOTED OTHERWISE THIS DRAWING IS NOT FOR CONSTRUCTION. ALL DIMENSIONS AND LEVELS ARE TO BE CHECKED ON SITE PRIOR TO THE COMMENCEMENT OF WORK. BEFORE TURNER OF ANY DISCREPANCIES FOR CLARIFICATION BEFORE PROCEEDING WITH WORK. CHANGES ARE NOT TO BE SCALE. USE ONLY PLOTTED DIMENSIONS. REFER TO CONSULTANT DOCUMENTATION FOR FURTHER INFORMATION. DWG, PCD AND BAA FILES ARE UNCONTROLLED DOCUMENTS AND ARE ISSUED FOR INFORMATION ONLY.

DLCS Quality Estimated Company 150 800 0000, License Number 4108
Notwithstanding to which Nicholas Turner 4605, 4606, 4608, 4609, 4610, 4611

KEY PLAN



LEGEND

- Site Block Boundary
- Site Setback
- High Water Mark
- Easement
- Setbacks
- Existing Club Building
- Maximum Building Envelope
- Zone For Reentrant Balconies, Depth to Comply With ADG (SEPP 65)
- Zone for Articulation, Bay Windows and Balconies able to Encroach into Set Back Zone, Depth 1m Unless Noted Otherwise
- Zone for Articulation below / beyond
- Zone for Awnings, Undercroft Setbacks and above Grade Courtyard zone.
- Zone for Awnings, Undercroft Setbacks and above Grade Courtyard zone below.
- Private Communal open Space
- Zone for Road
- Approved Urban Control Diagram Envelope
- Vehicle Circulation

- | | | | |
|---|--|----|--|
| 1 | Future Grandstand Expansion and facilities. | 10 | Hotel Facilities |
| 2 | Future Grandstand seating | 11 | Tourism Accommodation |
| 3 | Future Roof to existing Grandstand seating. | 12 | Residents' Communal Facilities |
| 4 | Entry Forecourt & Concourse. Subject to final detail and design. | 13 | Sharks Athletes' Accommodation + Training Facilities |
| 5 | Awning to street edge to retail, bus stop & community rooms | 14 | Car Park |
| 6 | Club Deck (roofed) | 15 | Loading Bay |
| 7 | Outdoor opening Food court (roofed) | 16 | Retail |
| 8 | Medical Services | 17 | Skylight |
| 9 | Community Rooms | 18 | Residents' Communal Pool |
| | | 19 | Residential |
| | | 20 | Sharks Social Club |
| | | 21 | Residential Lobby Building C |
| | | 22 | Hotel / Residential Parking |
| | | 23 | Childcare |



Rev.	Date	Approved by	Revision Notes
M	27.07.16	JM	S75W Submission
N	05.08.16	JM	For Information
O	23.09.16	JM	S75W Submission
P	01.11.16	JM	Updated S75W Submission
Q	23.06.17	JM	Updated S75W Submission
R	12.07.17	JM	Updated S75W Submission

CLIENT
Bluestone Capital Ventures No. 1 PL
Suite 1, Level 6, 71 Macquarie St Sydney NSW 2000 AU

RETAIL ARCHITECTS
HCR Rice & Co
Level 1, 110 Walker Street, North Sydney NSW 2060 AU

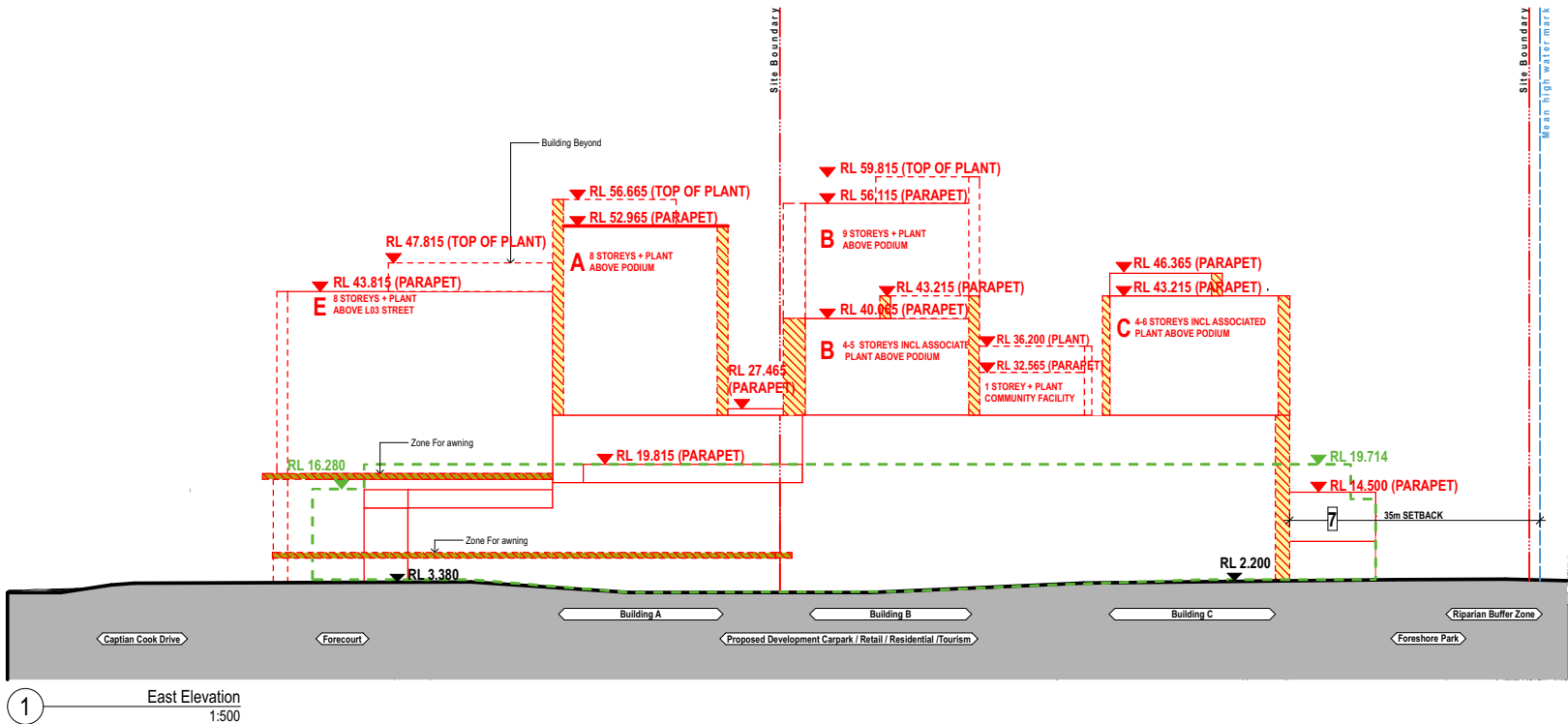
Project Title

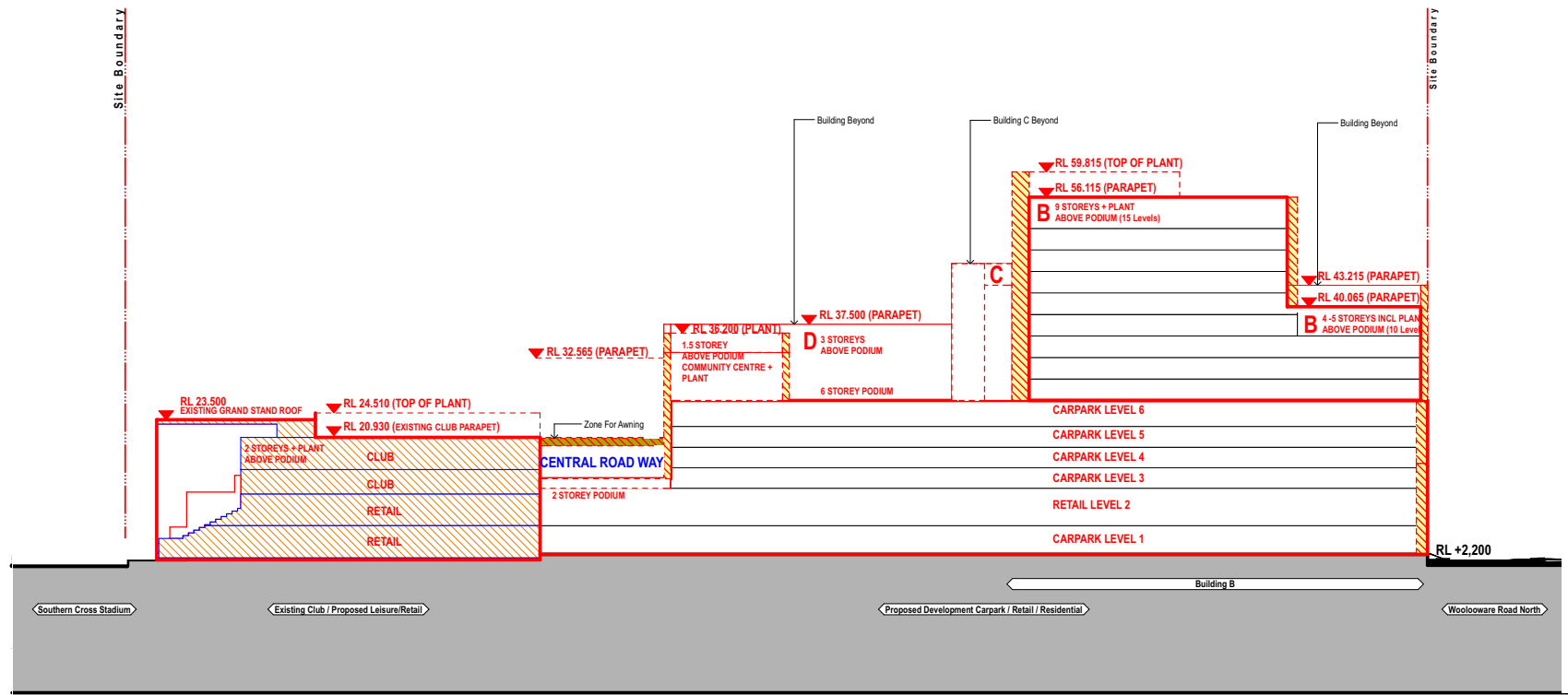
Bay Central Uplift - Concept Plan
Captain Cook Drive Woollooware NSW 2230 AU

Drawing Title
Urban Form Control Diagrams
East Elevation

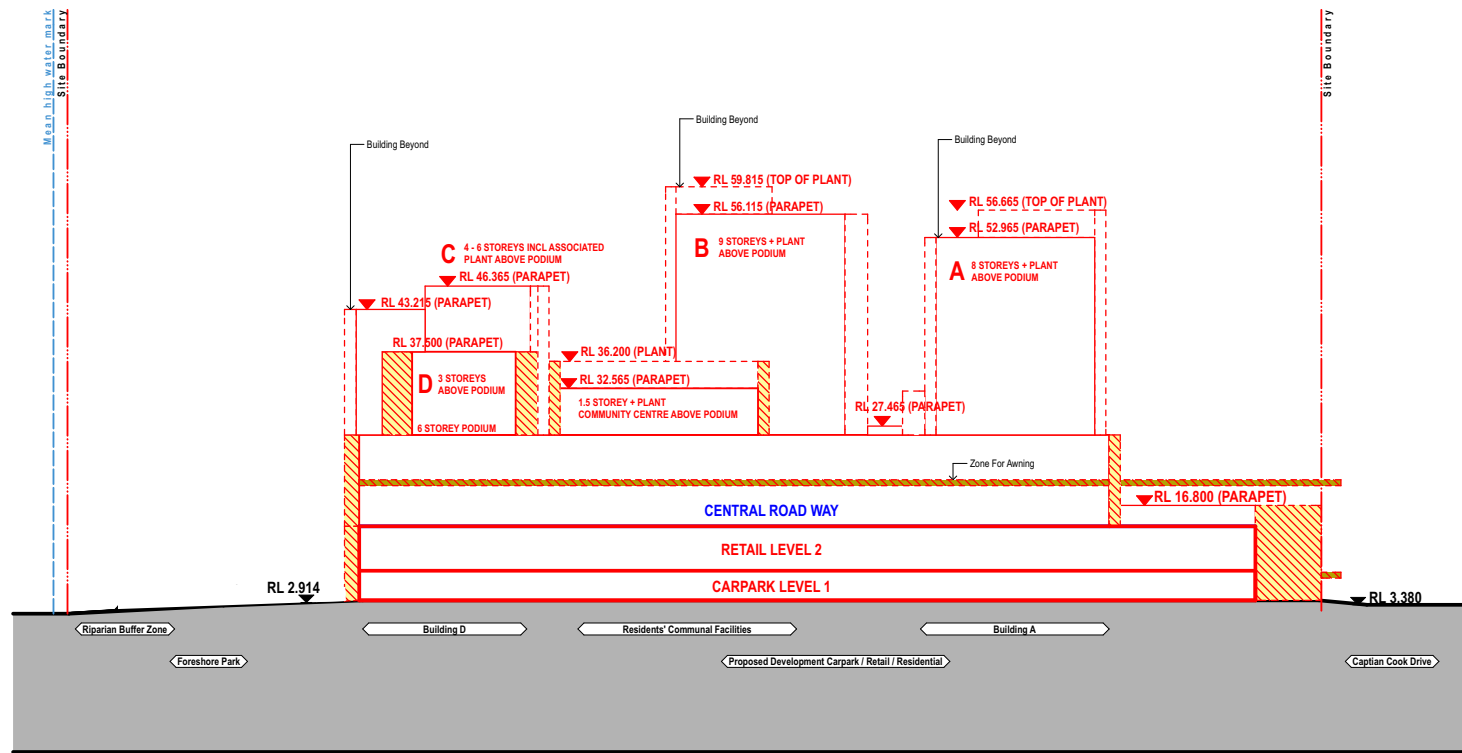
Scale	Project No.	Drawn by	North
1:500, 1:5000	@A1, 50% @A3	14020	PM, AT, JM
Status	Dwg No.	Rev	
S75W Submission	S6-A-132-011	R	

turner
Level 7, ONE Oxford Street
Sydney NSW 2000
Australia
T +61 2 8668 0000
F +61 2 8668 0088
turnerstudio.com.au





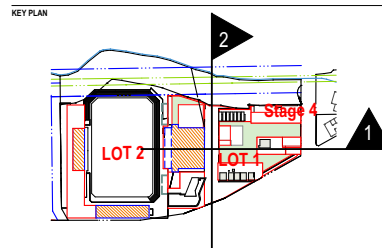
01 Section 01
1:500



02 Section 02
1:500

NOTES
THIS DRAWING IS THE COPYRIGHT © OF TURNER. NO REPRODUCTION WITHOUT PERMISSION. UNLESS NOTED OTHERWISE THIS DRAWING IS NOT FOR CONSTRUCTION. ALL DIMENSIONS AND LEVELS ARE TO BE CHECKED ON SITE PRIOR TO THE COMMENCEMENT OF WORK. IN THE EVENT OF ANY DISCREPANCIES FOR CLARIFICATION BEFORE PROCEEDING WITH WORK, CHANGES ARE NOT TO BE SCALE. USE ONLY PLOTTED DIMENSIONS. REFER TO CONSULTANT DOCUMENTATION FOR FURTHER INFORMATION. DWG, PCD AND BAA FILES ARE UNCONTROLLED DOCUMENTS AND ARE ISSUED FOR INFORMATION ONLY.

DLCS Quality Estimated Company ISO 9001:2008, License Number 4192
Notified Architect Nicholas Turner 4895, ABN 81 584 584 911



- LEGEND**
- Site Block Boundary
 - Site Setback
 - High Water Mark
 - Easement
 - Setbacks
 - Existing Club Building
 - Maximum Building Envelope
 - Zone For Reentrant Balconies, Depth to Comply With ADG (SEPP 65)
 - Zone for Articulation, Bay Windows and Balconies able to Encroach into Set Back Zone, Depth 1m Unless Noted Otherwise
 - Zone for Articulation below / beyond
 - Zone for Awnings, Undercroft Setbacks and above Grade Courtyard zone.
 - Zone for Awnings, Undercroft Setbacks and above Grade Courtyard zone below.
 - Private Communal open Space
 - Zone for Road
 - Approved Urban Control Diagram Envelope
 - Vehicle Circulation

- | | | | |
|---|--|----|--|
| 1 | Future Grandstand Expansion and facilities. | 10 | Hotel Facilities |
| 2 | Future Grandstand seating | 11 | Tourism Accommodation |
| 3 | Future Roof to existing Grandstand seating. | 12 | Residents' Communal Facilities |
| 4 | Entry Forecourt & Concourse. Subject to final detail and design. | 13 | Sharks Athletes' Accommodation + Training Facilities |
| 5 | Awning to street edge to retail, bus stop & community rooms | 14 | Car Park |
| 6 | Club Deck (roofed) | 15 | Loading Bay |
| 7 | Outdoor opening Food court (roofed) | 16 | Retail |
| 8 | Medical Services | 17 | Skylight |
| 9 | Community Rooms | 18 | Residents' Communal Pool |
| | | 19 | Residential |
| | | 20 | Sharks Social Club |
| | | 21 | Residential Lobby Building C |
| | | 22 | Hotel / Residential Parking |
| | | 23 | Childcare |



Rev.	Date	Approved by	Revision Notes
M	27.07.16	JM	S75W Submission
N	05.08.16	JM	For Information
O	23.09.16	JM	S75W Submission
P	01.11.16	JM	Updated S75W Submission
Q	23.06.17	JM	Updated S75W Submission
R	29.06.17	JM	For Review
S	12.07.17	JM	Updated S75W Submission

CLIENT
Bluestone Capital Ventures No. 1 PL
Suite 1, Level 6, 71 Macquarie St Sydney NSW 2000 AU

RETAIL ARCHITECTS
HCR Rice Davidson
Level 1, 110 Walker Street, North Sydney NSW 2060 AU

Project Title
Bay Central Uplift - Concept Plan
Captain Cook Drive Woolloomare NSW 2230 AU

Drawing Title
Urban Form Control Diagrams
Section 01 & 02

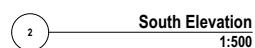
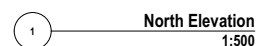
Scale	Project No.	Drawn by	North
1:5000, 1:500 @A1, 50% @A3	14020	PM, AT, JM	
Status	Dwg No.	Rev	
S75W Submission	S6-A-133-012	S	

DILCS Quality Endorsed Company ISO 9001:2008, Licence Number 4158

KEY PLAN



Retail Levels - By Other Architect



**CAPITAL
BLUESTONE**

Rev.	Date	Approved by	Revision Notes
Q	23.09.16	JM	For S75W Submission
R	01.12.16	JM	Updated S75W Submission
S	23.06.17	JM	Updated S75W Submission
T	12.07.17	JM	Updated S75W Submission
U	04.08.17	JM	Updated S75W Submission

CLIENT
Bluestone Capital Ventures No.1 PL
Suite 1, Level 6, 71 Macquarie St Sydney NSW 2000 AU

RETAIL ARCHITECTS
HDR Rice Daubney
Level 1, 110 Walker Street, North Sydney NSW 2060 AU

Project Title

Bay Central Uplift - Concept Plan
Captain Cook Drive Woollooware NSW 2230 AU

Drawing Title
Elevations

North & South Elevations

Scale	Project No.	Drawn by
1:500, 1:5000 @A1, 50%@A3	14020	PM, AT, JM
Status	Dwg No.	Rev
S75W Submission	S6-A-200-001	U

turner

Level 7, ONE Oxford Street
Darlinghurst NSW 2010
Australia
T +61 2 8568 0000
F +61 2 8568 0069
turnerstudio.com.au