



Woolloomoolwe Bay Town Centre

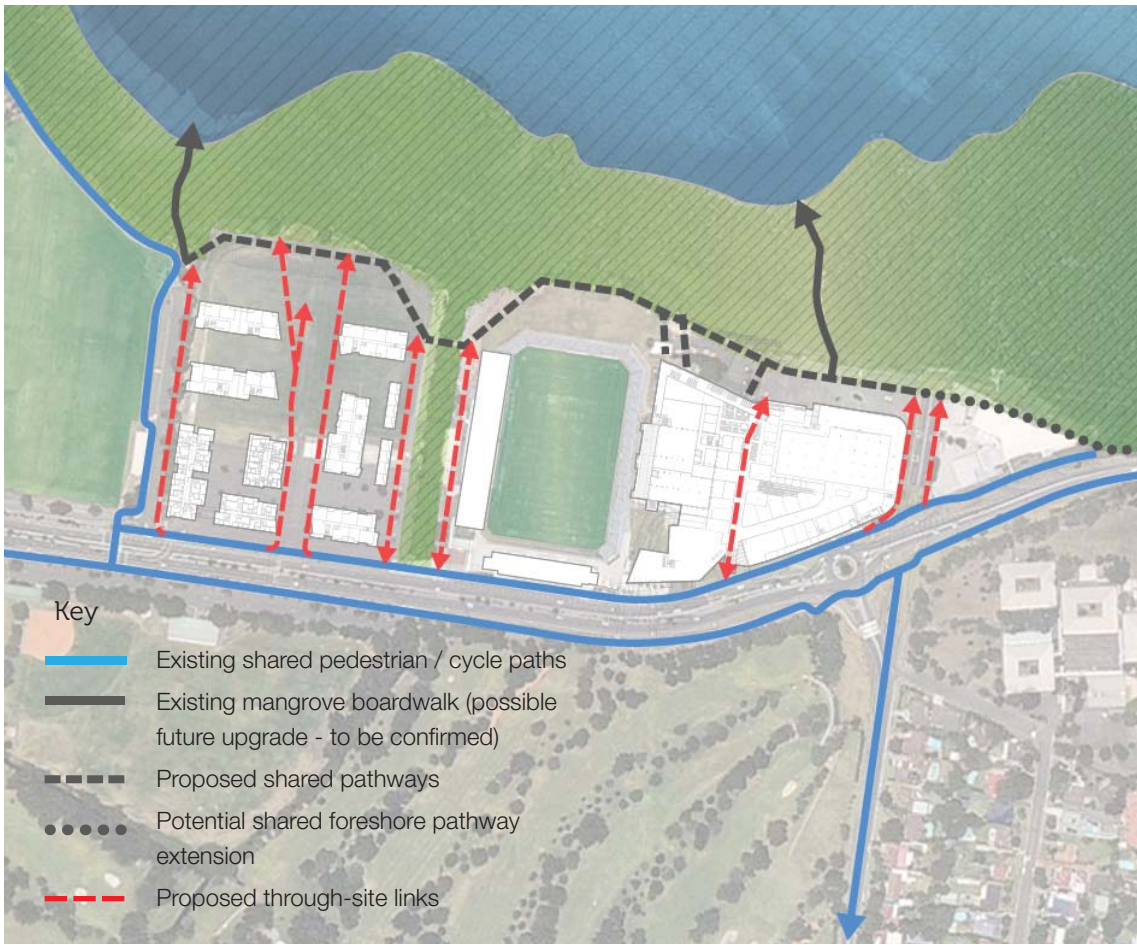
Stage 4 S75W - Residential Uplift

Context Plan 1:2500



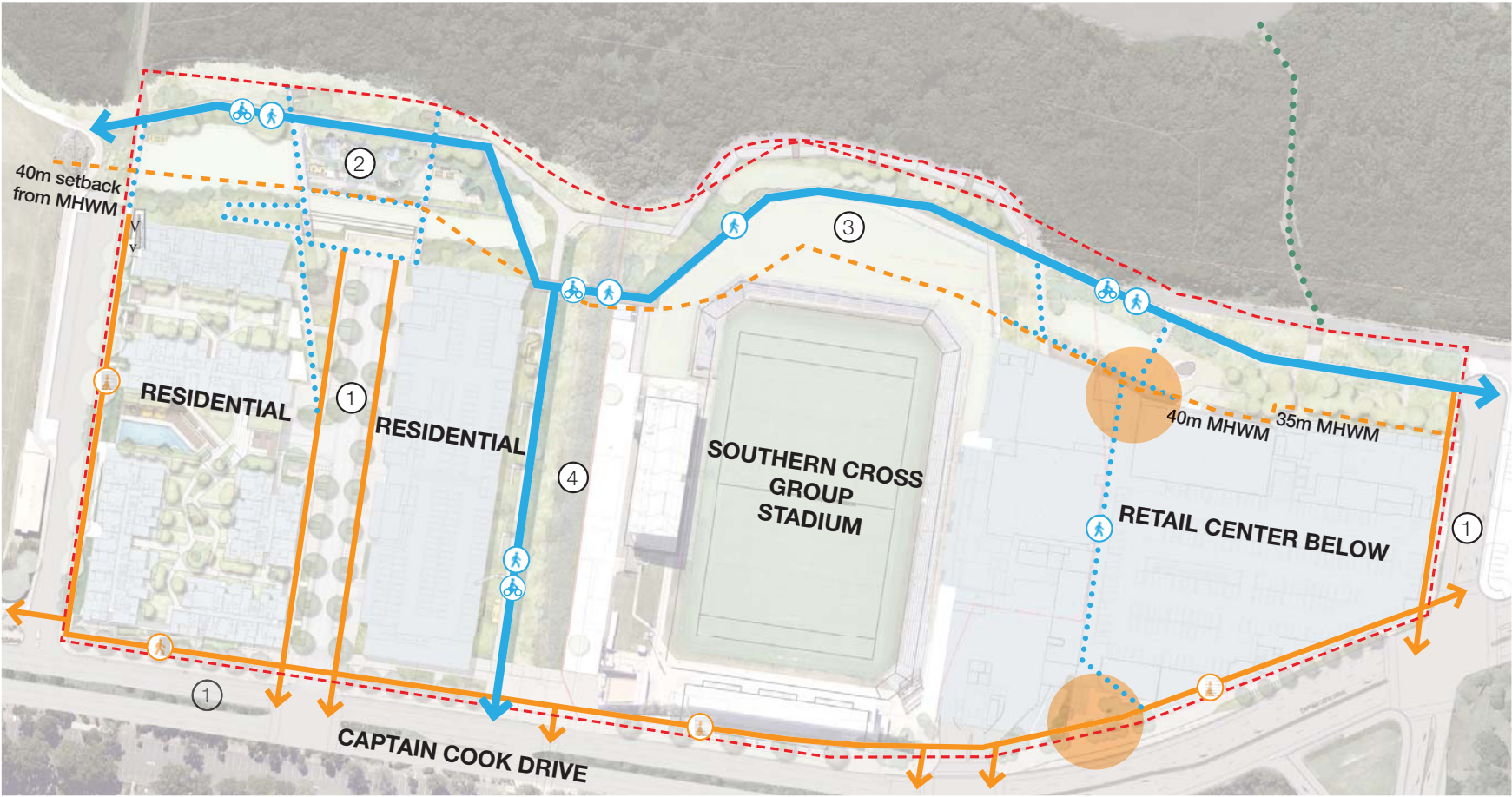
Aerial image (existing site conditions -October 2016). Source: Nearmaps

Existing + Proposed Pedestrian Links 1: 2500



11017 Woollooware Bay Town Centre, Cronulla | Stage 4 S75W - Uplift

Circulation + Public Landscape Spaces 1:1500



Key

- ① Streetscapes
- ② Foreshore Park
- ③ Southern Cross Group Stadium and 'Family Hill'
- ④ Existing Stormwater Channel

- Site Boundary Line
- Shared Pathway (Width 4m)
- Park Circulation Pathways
- Street Circulation Pathways

- Existing Mangrove Boardwalk
- 35-40m Setback from MHWM
- Retail Entries

Existing site images



Sharks Club and carpark



Aerial view of mangroves



Existing boardwalk



Southern Cross Group Stadium and 'Family Hill'

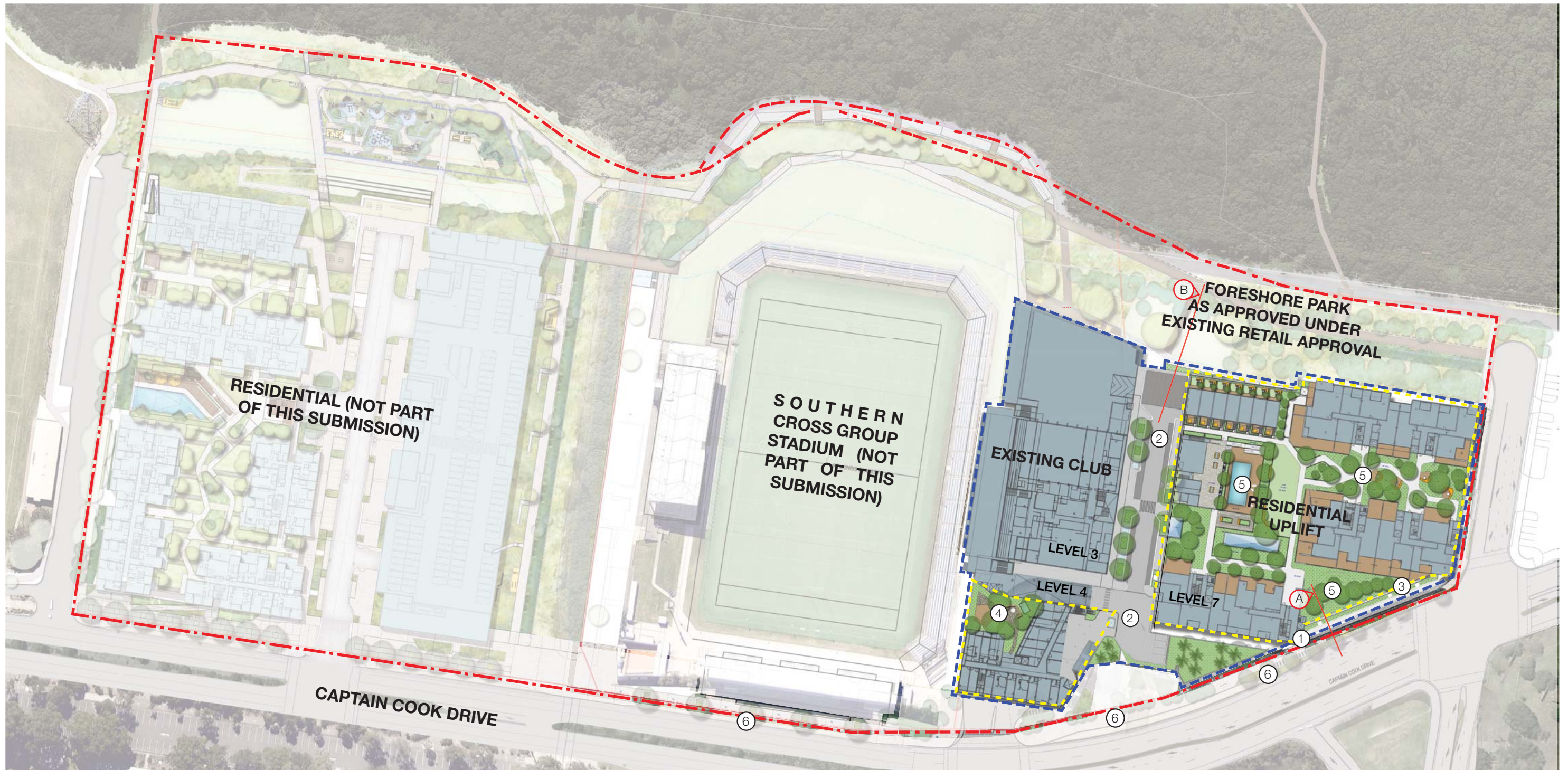


Carpark on western side of stadium



Playing fields on western side of stadium





Key

- Extent of application
- Site Boundary

- ① Residential entry
- ② Level 3 streetscape
- ③ Level 4 landscaped planter & green wall facade
- ④ Private communal courtyard to hotel
- ⑤ Level 7 Residential Podium Garden
- ⑥ Upgraded streetscape with street tree planting (as approved under existing retail application)

11017 Woollooware Bay Town Centre, Cronulla | Stage 4 S75W - Uplift

Landscape Master Plan

ASPECT Studios™

Client: CAPITAL BLUESTONE

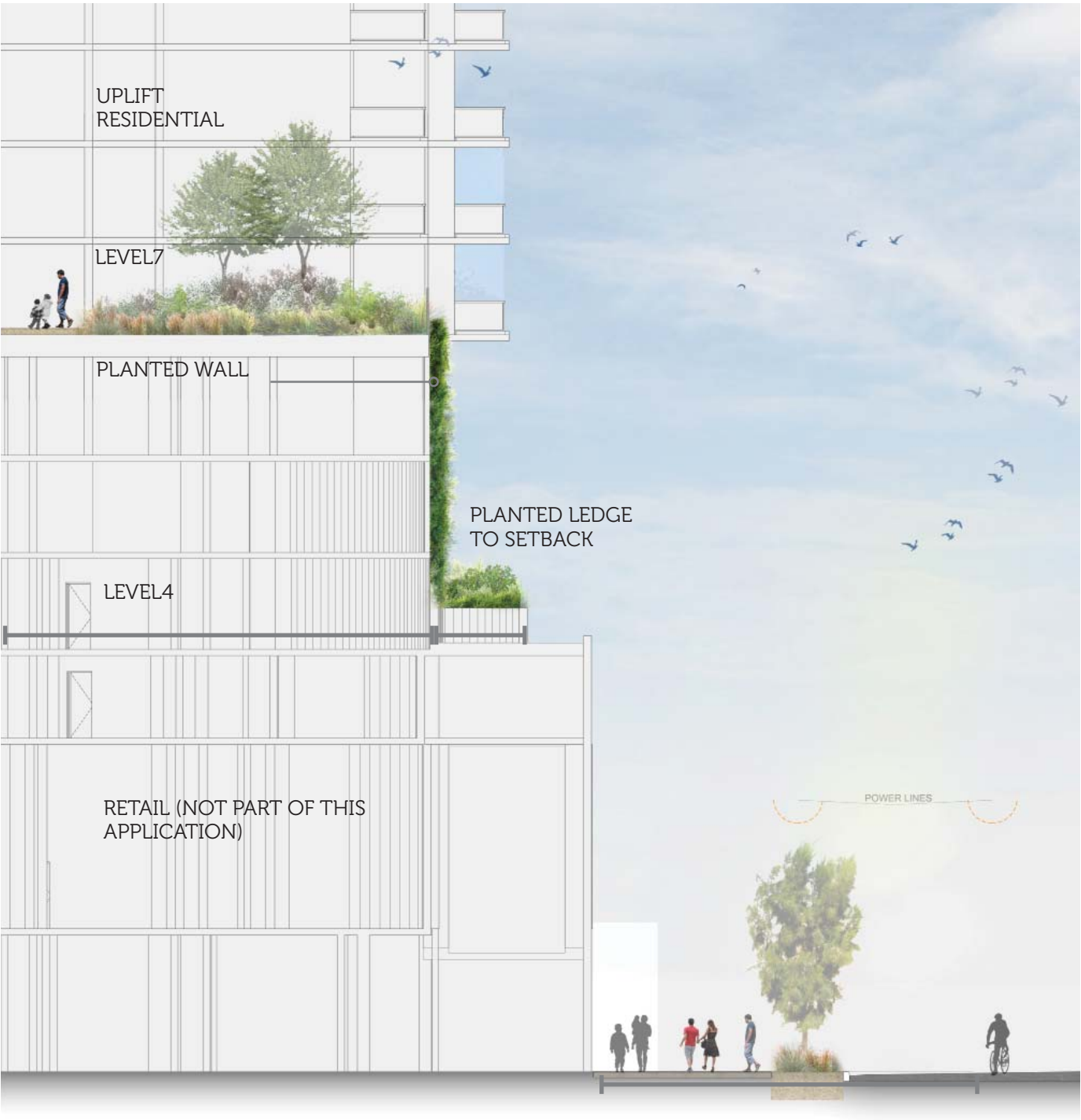
Architects: turner

Drawn: AA/DP
Checked: TW

Scale: 1:500 @ A1
Date: OCTOBER 2016

Dwg no.: 11017 UR-S75W-02
Rev: A





Green Wall + Building Planters. Precedent Images

level 4 landscape planter & "Greenwall". Precedent Images



Landscaped planter & 'Green wall'
> One Central Park

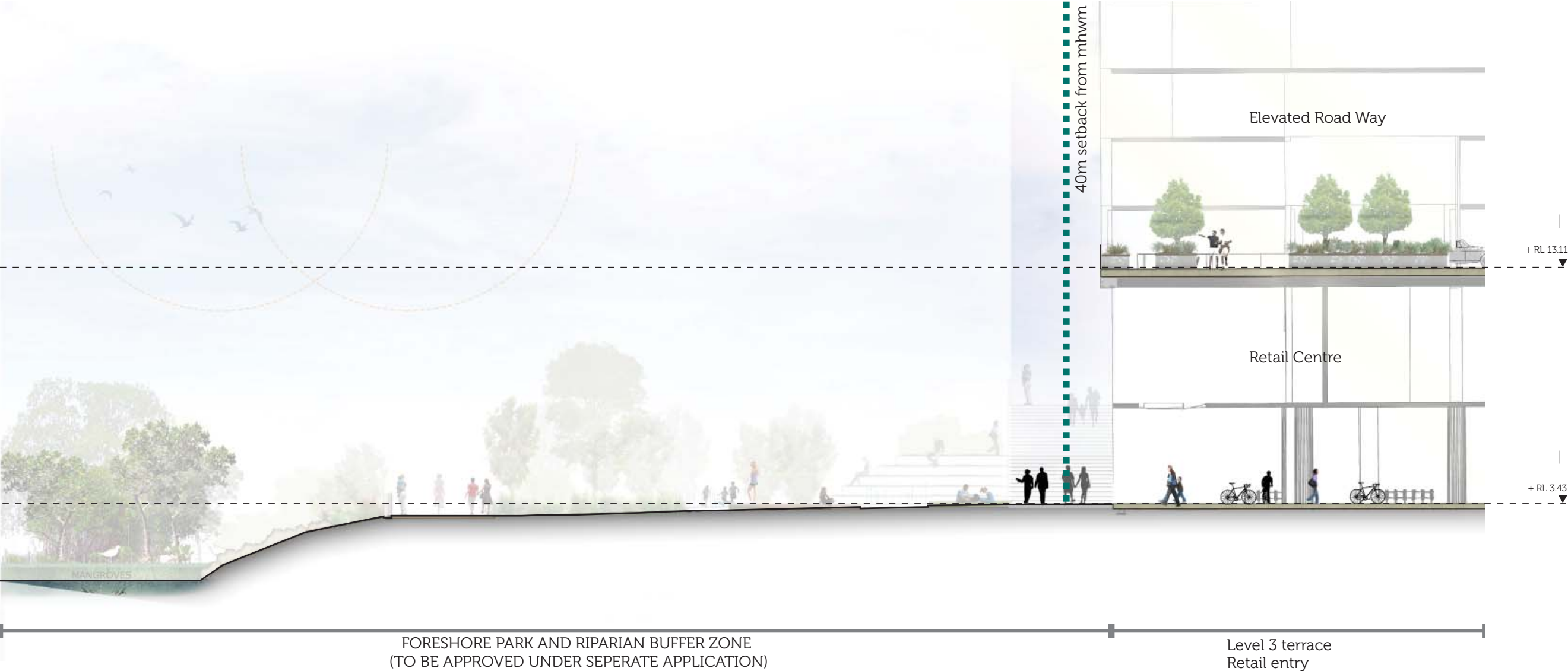


Landscaped planter
> One Central Park



Planted walls
> ASPECT image library

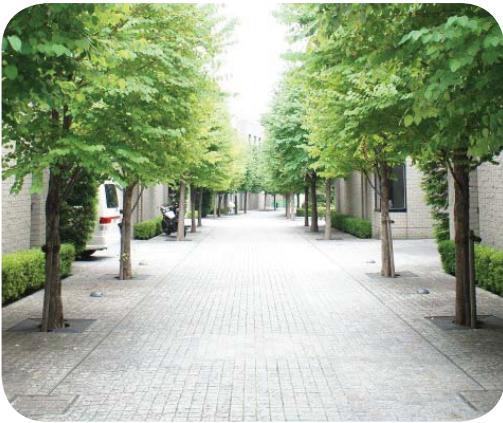
Section B 1:200





- Key
- | | | | |
|---|---|---|--|
| ① | Pedestrian footpaths | ⑥ | Mounded landscape with dense planting |
| ② | Parking bays | ⑦ | Turning circle |
| ③ | Street trees and underplanting in raised planters | ⑧ | Ramp to upper level parking |
| ④ | Planting in raised planters | ⑨ | Ramp entry to L3 Roadway from Captain Cook Drive |
| ⑤ | Sculptural skylights set amongst massed planting | ⑩ | 'Green wall' Facade |

Precedent Images



Street Tree Avenue with Under-Planting



Planting Character



Raised planters with trees and planting



'Green wall' Facade



11017 Woollooware Bay Town Centre, Cronulla | Stage 4 S75W - Uplift

Landscape Section | Level 03



Key

- ① Podium garden with crushed granite access path
- ② Tapered walling with integrated seating
- ③ Raised timber seating platform
- ④ Landscaped planters + 'Green wall' facade treatment
- ⑤ Screen Planting

Level 4 podium landscape
Precedent Images



Crushed granite pathways



Tapered Walling with Integrated Seating



Mounded mass planting with feature trees



Raised Seating Platform



Landscaped facade planter
> One Central Park



Planted 'greenwalls' to soften building facade



Key

- | | | |
|--|---|--|
| ① Active pool area / Timber deck | ⑤ Communal BBQ Area | ⑨ Mounded planting and tree groves |
| ② Community Gardens | ⑥ Main access pathway | ⑩ Passive decking spaces and Seating opportunities |
| ③ 'The Lawn' - Active Turf area | ⑦ The Club House | ⑪ Private residential courtyards |
| ④ Feature trees which can be viewed through skylight | ⑧ Raised skylight with planter surround | ⑫ Integrated bench seating |

Level 7 podium landscape

Precedent Images -



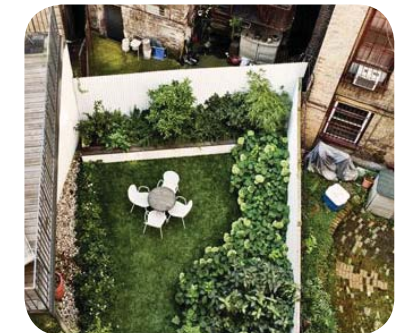
Communal Active Pool / Deck area



'Lagoon Style' Pool



Seating and Deck Platforms



Private Residential Courtyards



Concrete Pathways and Passive Seating



Tapered Walling / seating



'The Lawn' - Active communal lawn space



Massed Coastal 'Dune' Planting

11017 Woollooware Bay Town Centre, Cronulla | Stage 4 S75W - Uplift

ASPECT Studios™

Client: **CAPITAL BLUESTONE**

Architects: **turner**

Drawn: AA/DP
Checked: TW

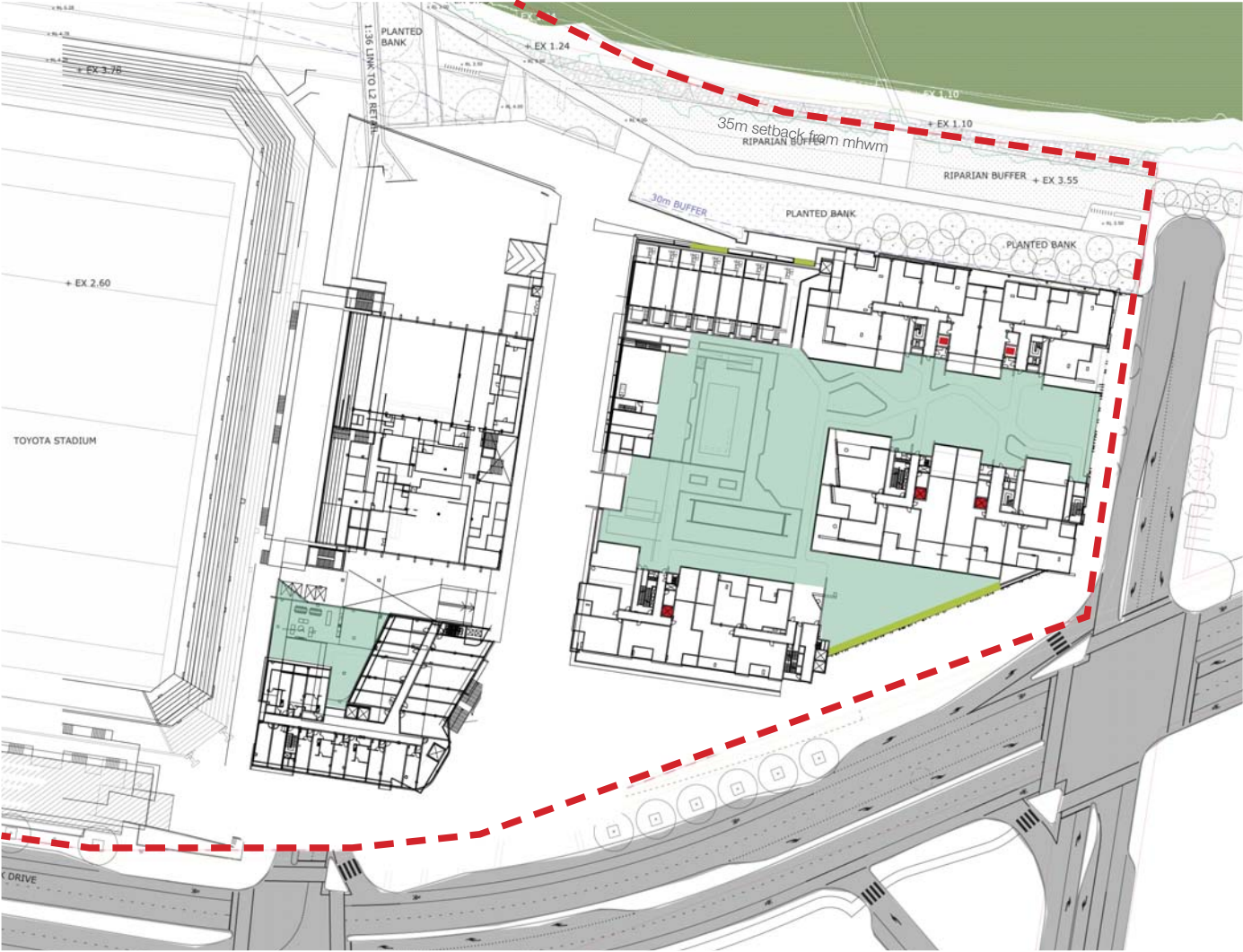
Scale: 1:500 @ A1
Date: OCTOBER 2016

Dwg no.: 11017 UR-S75W-08
Rev: A



Landscape Concept Plan | Level 07

Planting Zones Key Plan



- 'Green wall' + Landscaped Planter
- Residential Courtyards / Elevated Podium
- Site Boundary

INDICATIVE PLANTING SCHEDULES

Green Wall & Landscape Planters

Botanic Name	Common Name
Shrubs / Groundcovers	
<i>Adiantum aethiopicum</i>	Common maidenhair
<i>Dichondra repens</i>	Kidney weed
<i>Liriope muscari</i>	Lilyturf
<i>Pachysandra terminalis</i>	Japanese pachysandra
<i>Philodendron xanadu</i>	Xanadu
<i>Viola hederacea</i>	Ivy-leaf Violet
<i>Bougainvillea</i> 'Bambino Panda'	Bambino Panda
<i>Casuarina glauca</i> 'Cousin It'	Cousin It
<i>Juniperus conferta</i> 'Blue Pacific'	Shore Juniper
<i>Liriope muscari</i> 'Just Right'	Liriope 'Just Right'
<i>Pandorea jasminoides</i> 'Lady Di'	Lady Di
<i>Pandorea pandorana</i>	Wonga Wonga Vine
<i>Myoporum parvifolium</i>	Creeping Myoporum
<i>Mandevilla laxa</i>	Chilean Jasmine
<i>Rhaphiolepis indica</i> 'Snow Maiden'	Snow Maiden Indian Haw-thorn
<i>Westringia fruticosa</i> 'Mundi'	Native Rosemary
<i>Westringia fruticosa</i> 'Smokey'	Smokey Coast Rosemary
Groundcovers / Cascading	
<i>Dichondra repens</i>	Kidney Weed
<i>Juniperus conferta</i> 'Blue Pacific'	Shore Juniper
<i>Hibbertia scandens</i>	Snake Vine
<i>Russelia equisetiformis</i>	Firecracker Plant

Residential Courtyards / Elevated Podium

Botanic Name	Common Name
Trees	
<i>Backhousia myrtifolia</i>	Cinnamon Myrtle
<i>Cupaniopsis anacardioides</i>	Tuckeroo
<i>Elaeocarpus reticulatus</i>	Blueberry Ash
<i>Glochidion ferdinandi</i>	Cheese Tree
<i>Lagerstroemia indica</i>	Crepe Myrtle
<i>Melia azedarach</i>	White Cedar
<i>Sapium sebiferum</i>	Chinese Tallowood
<i>Tristania laurina</i>	Water Gum
<i>Allocasuarina littoralis</i>	Black She Oak
<i>Glochidion ferdinandi</i>	Cheese Tree
<i>Banksia serrata</i>	Old Man Banksia
<i>Agathis robusta</i>	Queensland Kauri Pine
<i>Pandanus tectorius</i>	Screw Pine
<i>Bambusa textilis</i> 'Gracilis'	Slender Weaver Bamboo
<i>Eucalyptus maculata</i>	Spotted Gum
Shrubs	
<i>Dietes robinsoniana</i>	Wedding Lily
<i>Acmena smithii</i> var. <i>Minor</i>	Dwarf Lilly Pilly
<i>Aloe plicatilis</i>	Fan Aloe
<i>Doryanthes excelsa</i>	Gymea Lily, Giant Lily
<i>Beschorneria yuccoides</i>	Mexican Lily
<i>Cordylina stricta</i>	Narrow-leaved Palm Lily
<i>Helichrysum petiolare</i>	Licorice Plant
<i>Myoporum parvifolium</i> 'Yareena'	Creeping Boobialla
<i>Lomandra hystrix</i> 'Katie Belles'	Longleaf Mat Rush
<i>Lomandra longifolia</i> 'Katrinus Deluxe'	Spiny Headed Mat Rush
Groundcovers / Climbers	
<i>Dichondra repens</i>	Kidney Weed
<i>Hardenbergia violacea</i>	False Sarsaparilla
<i>Viola hederacea</i>	Native Violet
<i>Senecio mandraliscae</i>	Blue Chalk Sticks
<i>Actinotus helianthi</i>	Flannel Flower
<i>Crassula ovata</i> 'Gollum'	Gollum Jade Plant
<i>Melaleuca linearifolia</i> 'Claret Tops'	Honey Myrtle
<i>Helichrysum petiolare</i>	Licorice Plant
<i>Patersonia occidentalis</i>	Long Purple Flag
<i>Westringia fruticosa</i> 'Jervis Gem'	Native Rosemary
<i>Pimelea ferruginea</i>	Pink Rice-flower
<i>Hardenbergia violacea</i> 'Meema'	Purple Twining-pea, False Sarsaparilla
<i>Juniperus conferta</i>	Shore Juniper
<i>Pultenaea daphnoides</i>	Slender Bush-pea
<i>Mesymbrianthum</i> spp.	White-flowered Pig Face
Ferns	
<i>Asplenium nidus</i>	Birds Nest Fern
<i>Blechnum cartilagineum</i>	Gristle Fern
<i>Doodia aspera</i>	Prickly Rasp Fern
Rushes / Grasses	
<i>Crinum pedunculatum</i>	Crinum Lily
<i>Dianella caerulea</i>	Blue Flax Lily
<i>Dianella revoluta</i>	Mauve Flax Lily
<i>Doryanthes excelsa</i>	Gymea Lily
<i>Imperata cylindrica</i> 'Yalpa'	Blady grass
<i>Liriope spicata</i>	Creeping Lily Turf
<i>Ophiopogon Jaburan</i>	Giant Mondo Grass
<i>Lomandra hystrix</i>	Green matrush
<i>Liriope muscari</i> 'Isabella'	Isabella
<i>Isolepis nodosa</i>	Knobby Club-rush
<i>Lomandra</i> 'Lime Tuff'	Lime Tuff Mat-rush
<i>Dianella caerulea</i> 'Little Jess'	Little Jess
<i>Lomandra longifolia</i> 'Katie Bells'	Spiny-headed mat rush
<i>Lomandra longifolia</i>	Spiny-headed Mat-Rush
<i>Dianella revoluta</i>	Spreading Flax Lily
<i>Pennisetum alopecuroides</i> 'Nafray'	Swamp Foxtail Grass
<i>Liriope muscari</i> 'Variegata'	Variegated Lily Turf

Planting Character



11017 Woollooware Bay Town Centre, Cronulla | Stage 4 S75W - Uplift

Planting Strategy | Environmental Assessment