

- Wide and safe*
- Open sightlines into car park*
- Places to sit*
- Variety in façade*
- Boulevard trees*





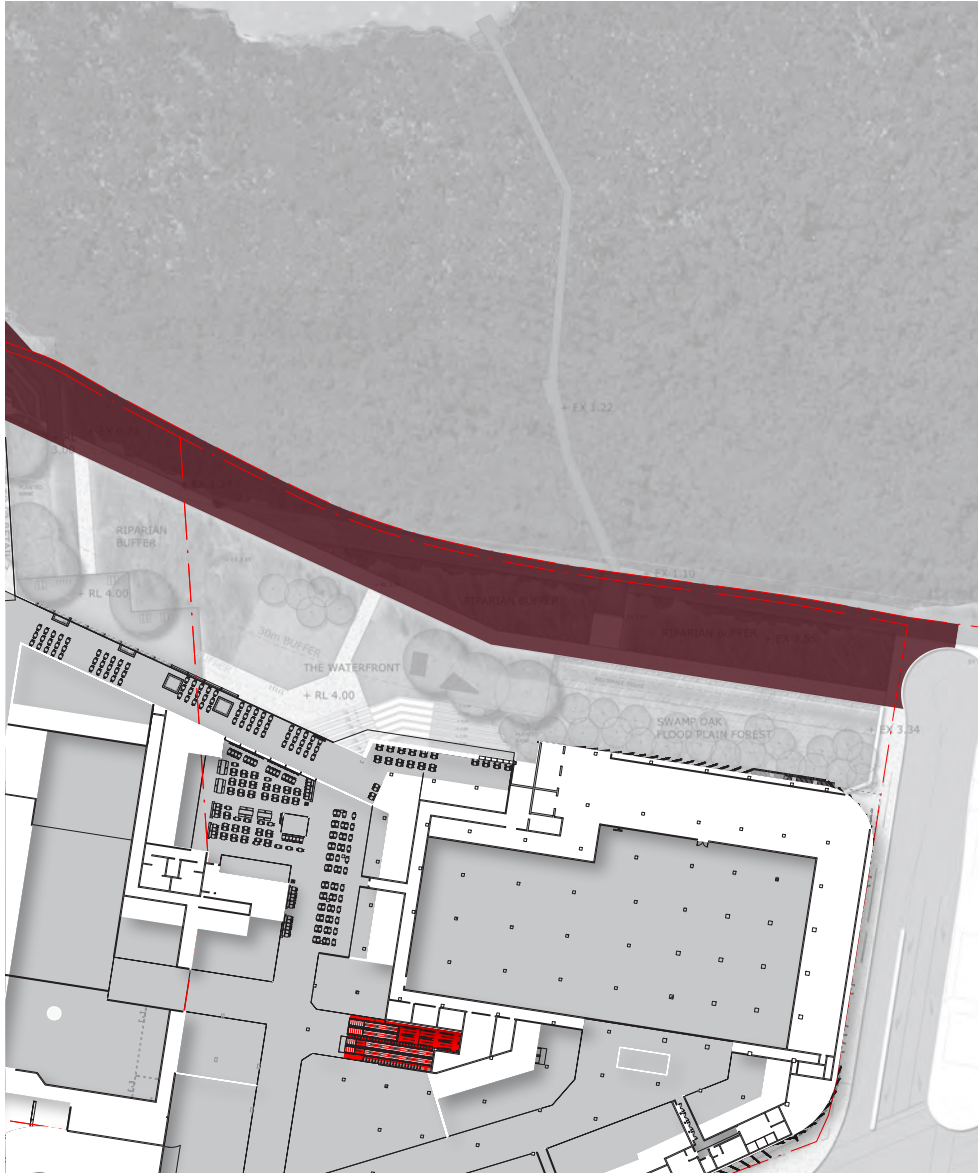
The Footpath

The Footpath is a dynamic street front and an iconic statement. Flanking Captain Cook Drive, the space celebrates a moving environment. It is framed by a curved, semi-permeable screen that provides glimpses of the carpark and by a busy road. It is a place to walk past and enjoy the ever-changing visage. It is the place where kids will walk on their way to the shops from school.

The Footpath wraps around the eastern extent of the building, hugging the energetic facade screen. It creates a safe pedestrian path connecting new controlled intersections. It connects the Arrival to the Foreshore via Woollooware Rd. On Captain Cook Drive, street trees provide a friendly pedestrian environment.

The colour and movement of the facade provides a lively moving image. For those walking past, the irregular penetrations become nooks for looking into. For drivers, the screen changes form as it is passed. The facade morphs as it turns the corner to reflect the tangled web of mangroves on Woollooware Bay.





Landscaped thoroughfare

Casuarinas screening dock and car park

Connections to beyond

Space between mangroves and building

Nature

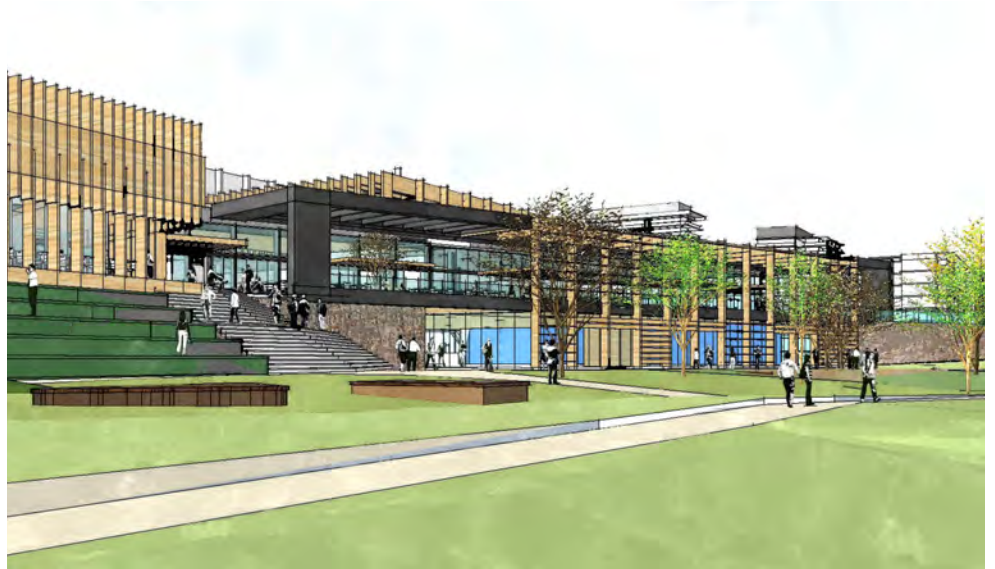
Cyclists

Walkers

Sunny

Safe at night





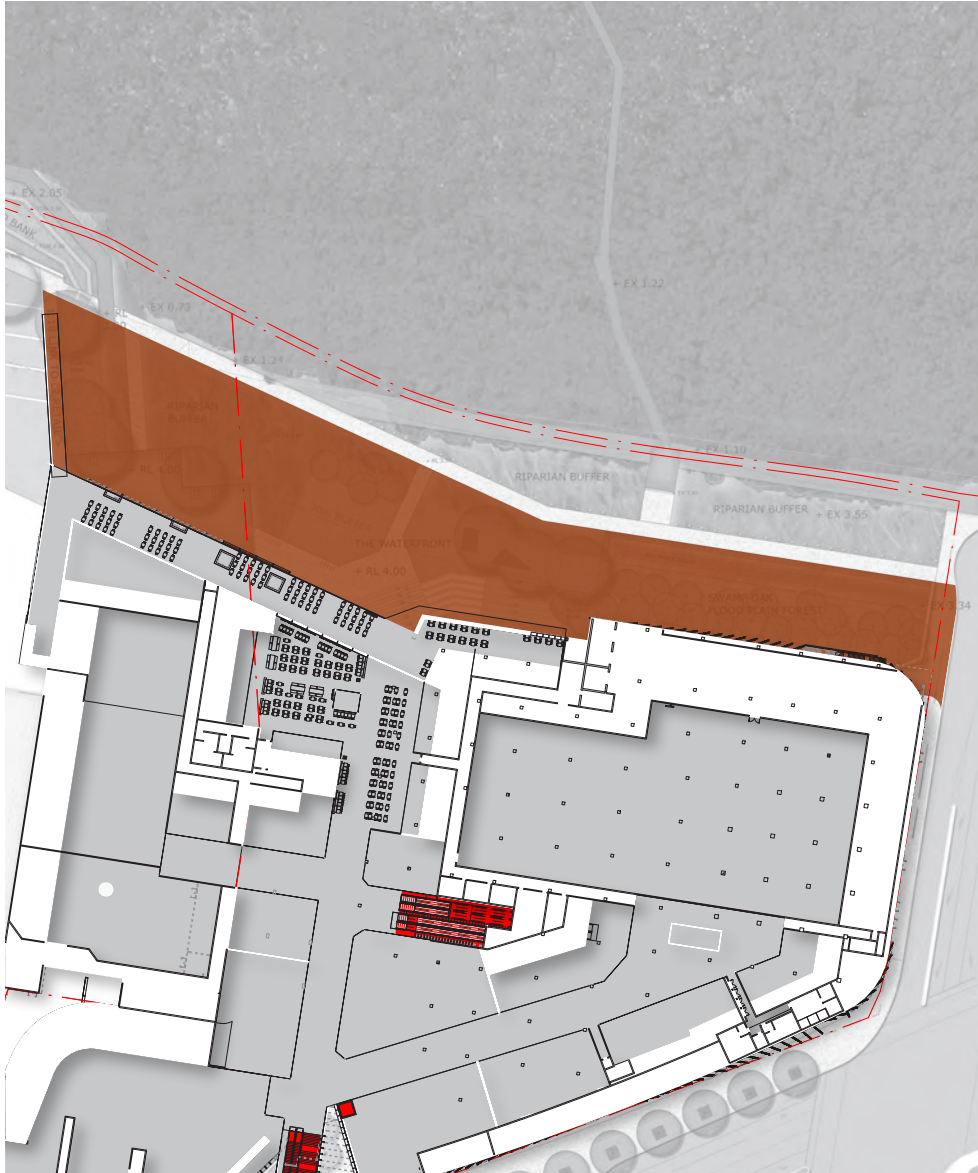
The Foreshore Walk

The Foreshore Walk is the pedestrian spine of Woollooware Bay. It is a place to stroll or ride a bike. It is a quick connection for residents of the village to do some shopping or a path for afternoon joggers. It is a strip of activity and life on the northern edge of the site, linking all the areas of the development.

Flanking the mangroves, the Foreshore Walk is a new connection that has never existed before; it links the Village, the Estuary, the Hill the Waterfront and the Footpath. It includes an informal sea wall, riparian buffer planting, a bridge across the Estuary and trees and landscaping. At the western end, the Foreshore Walk is adjacent to the Village's barbecue and playground areas. The Foreshore Walk is part of the wider Sutherland bike network, with future connections planned.

The Foreshore Walk is a meandering form through the landscape. Sometimes it weaves through the mangroves, sometimes it is a formal path through an arcade of trees. It is built from timber and concrete to reflect the area's maritime heritage.





Active foreground to dining

Overlooked by dining decks

Places to play - stretches brunch

Lit at night

A place to pause along the waterfront

Cyclists and cycle parking

Walkers

User-friendly landscape

User-friendly ground plane

Mangroves as garden wall

Terraced edge to building

Engaged with interior activities

