

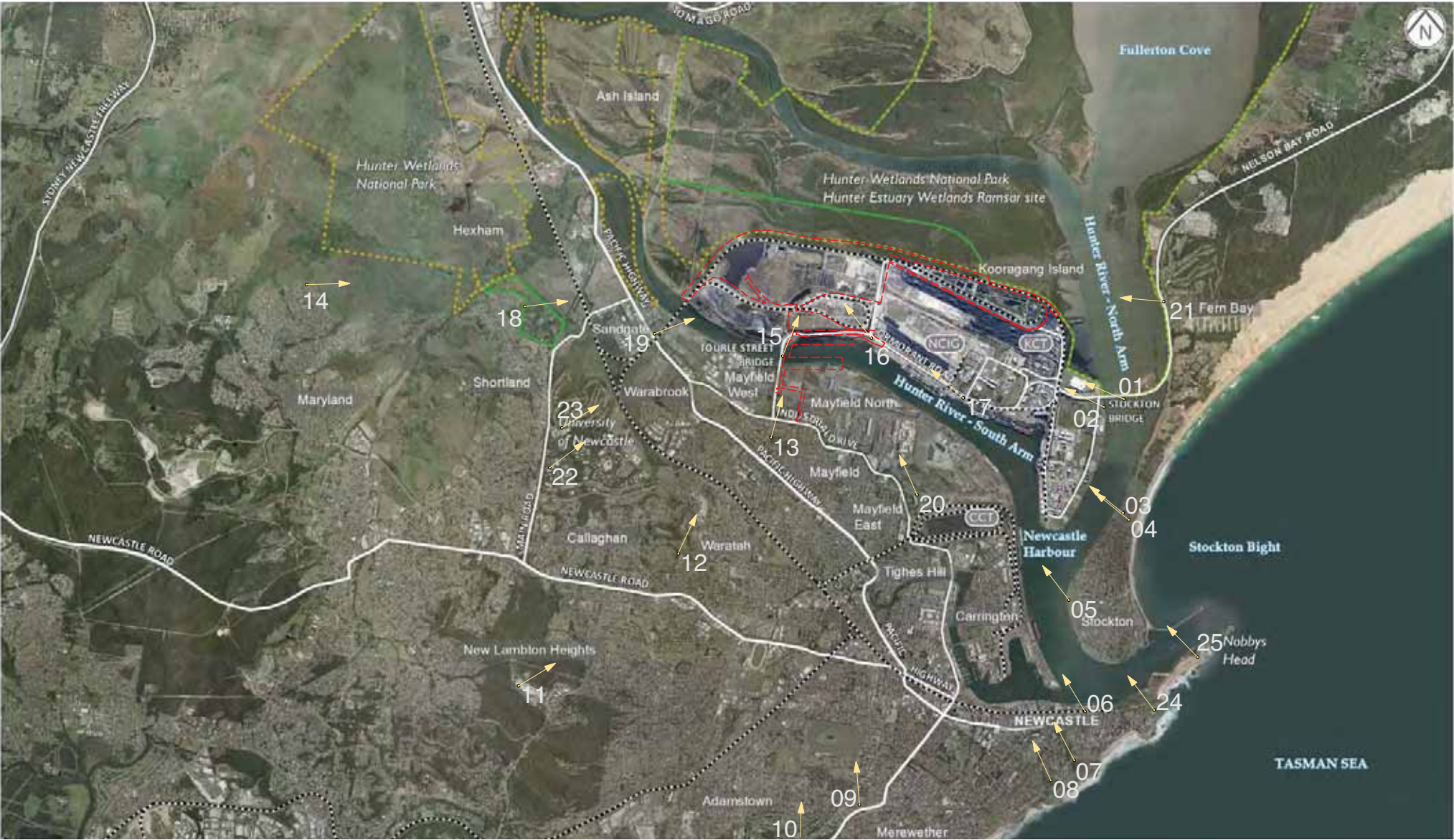
PROPOSED TERMINAL 4 PROJECT

SCALE

0 0.5 1 2Km

LEGEND

- KEY ROADS
- RAIL
- HUNTER ESTUARY WETLANDS RAMSAR SITE
- NATIONAL PARK BOUNDARY (APPROX.)
- T4 PROJECT AREA BOUNDARY
- T4 PROJECT INFRASTRUCTURE COMPONENTS
- ZONE OF VISUAL INFLUENCE
- VISUAL ENVELOPES (0.5Km, 1Km, 3Km, 6Km)



PROPOSED TERMINAL 4 PROJECT

SCALE

00.512Km

LEGEND

KEY ROADS

RAIL

HUNTER ESTUARY WETLANDS RAMSAR SITE

NATIONAL PARK BOUNDARY (APPROX.)

T4 PROJECT AREA BOUNDARY

12

LOCATIONS OF VIEWPOINTS VISITED

FIGURE 11 LOCATIONS OF SIGNIFICANT VIEWPOINTS



PROPOSED TERMINAL 4 PROJECT

SCALE

0 0.5 1 2Km

LEGEND

- KEY ROADS
- RAIL
- HUNTER ESTUARY WETLANDS RAMSAR SITE
- NATIONAL PARK BOUNDARY (APPROX.)
- T4 PROJECT AREA BOUNDARY

LOCATIONS OF VIEWPOINTS THAT PHOTOMONTAGES CREATED

24



EXISTING VIEW



VISUAL IMPACT

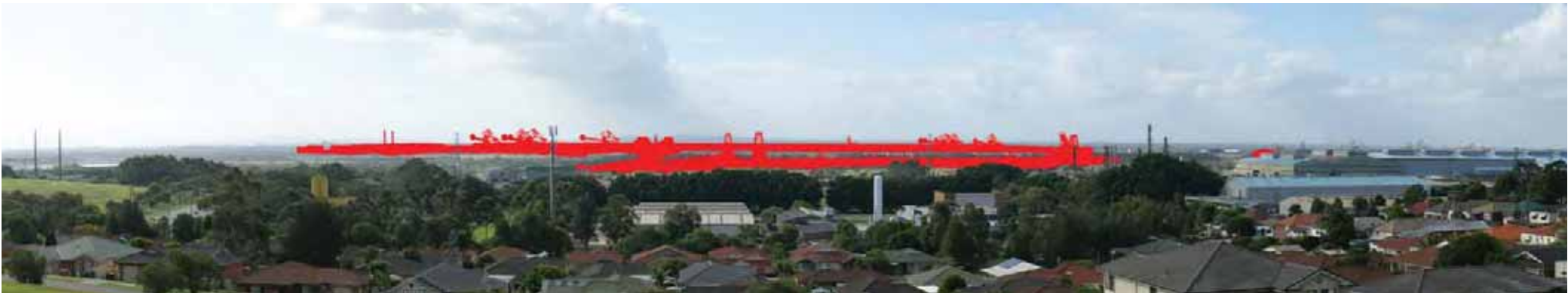


PREDICTED VIEW

PROPOSED TERMINAL 4 PROJECT	Distance from The T4 Project	4.1km	Direction from The T4 Project	South	
	Date/ time photograph was taken	04 May 2011 / 4.01pm	GPS co-ordinates	E 380054	N 6358645
	Camera height	1.85m	Viewpoint elevation	70m	



EXISTING VIEW



VISUAL IMPACT



PREDICTED VIEW

PROPOSED TERMINAL 4 PROJECT	Distance from The T4 Project	2.2km	Direction from The T4 Project	South	
	Date/ time photograph was taken	04 May 2011 / 3.47pm	GPS co-ordinates	E 381517	N 6360172
	Camera height	1.85m	Viewpoint elevation	43m	



EXISTING VIEW



VISUAL IMPACT



PREDICTED VIEW

PROPOSED TERMINAL 4 PROJECT	Distance from The T4 Project	>1km	Direction from The T4 Project	South	
	Date/ time photograph was taken	15 May 2011 / 12.41pm	GPS co-ordinates	E 381502	N 6361404
	Camera height	1.85m	Viewpoint elevation	11m	



EXISTING VIEW



VISUAL IMPACT



PREDICTED VIEW

PROPOSED TERMINAL 4 PROJECT	Distance from The T4 Project	1.7km	Direction from The T4 Project	South-west	
	Date/ time photograph was taken	15 May 2011 / 12.21pm	GPS co-ordinates	E 379601	N 6361750
	Camera height	1.85m	Viewpoint elevation	9m	



EXISTING VIEW



VISUAL IMPACT



PREDICTED VIEW

PROPOSED TERMINAL 4 PROJECT	Distance from The T4 Project	8.3km	Direction from The T4 Project	South-east	
	Date/ time photograph was taken	15 May 2011 / 11.24am	GPS co-ordinates	E 386967	N 6356293
	Camera height	1.85m	Viewpoint elevation	40m	

## 12. Appendix A

---

Supplementary photomontages and visual studies prepared by Aurecon Hatch and EMGA.













PREPARED BY AURECON HATCH & EMGA



PREPARED BY AURECON HATCH & EMGA



PREPARED BY AURECON HATCH &amp; EMGA



PREPARED BY AURECON HATCH &amp; EMGA

## 13. Appendix B

Director General Requirements	Chapter/Section in LVIA Report	Page
<b>General Requirements:</b>		
1. an executive summary;	1	5
2. a detailed description of the project;	2	6
3. an assessment of key issues.	5	19
<b>Key Assessment Requirements:</b>		
1. Visual Impact – the EA must include as assessment of the impacts of the project on visual amenity of the surrounding areas;	6	22
2. And consider large scale landscaping within the context of a port and industrial precinct.	4	15
<b>Environmental Risk Analysis:</b>		
1. Identify potential environmental impacts associated with the project (construction and operation;	10	10
2. Proposed mitigation measures; and	7	31
3. Potentially significant residual environmental impacts after the application of proposed mitigation measures.	5.1.5	21
<b>Supplementary Director General Requirements</b>	<b>Chapter/Section in LVIA Report</b>	<b>Page</b>
<b>Key Assessment Requirements:</b>		
3. The detailed description of the project must include:	5.1.5	21
- The precise location of any works to be undertaken, structures to be built or elements of the action that may have relevant impacts;	7	31
- How the works will be undertaken and design parameters for those aspects of the structures or elements of the action that may have relevant impacts;	8	33
10. Information sources.	10	36

