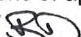
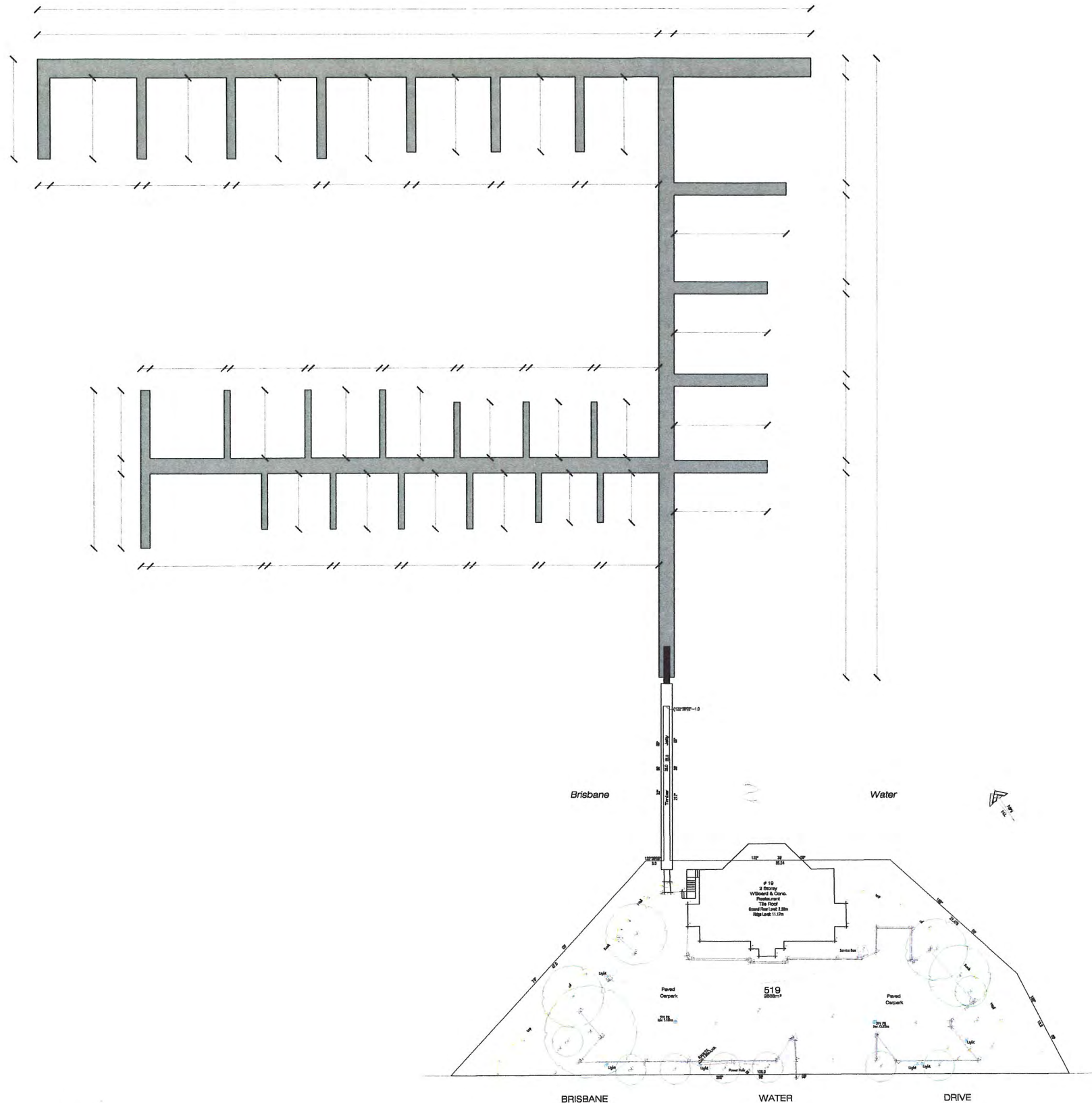
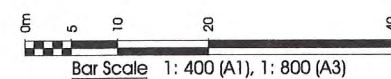



150134-SK-001-C

100mm AT FULL SIZE



Major Project Number: **MP 10\_0209** approved on **9 May 2012** by the Planning Assessment Commission, as delegate for the Minister for Planning & Infrastructure, in accordance with the *Environmental Planning & Assessment Act 1979*, subject to conditions of approval.  
Signed: 



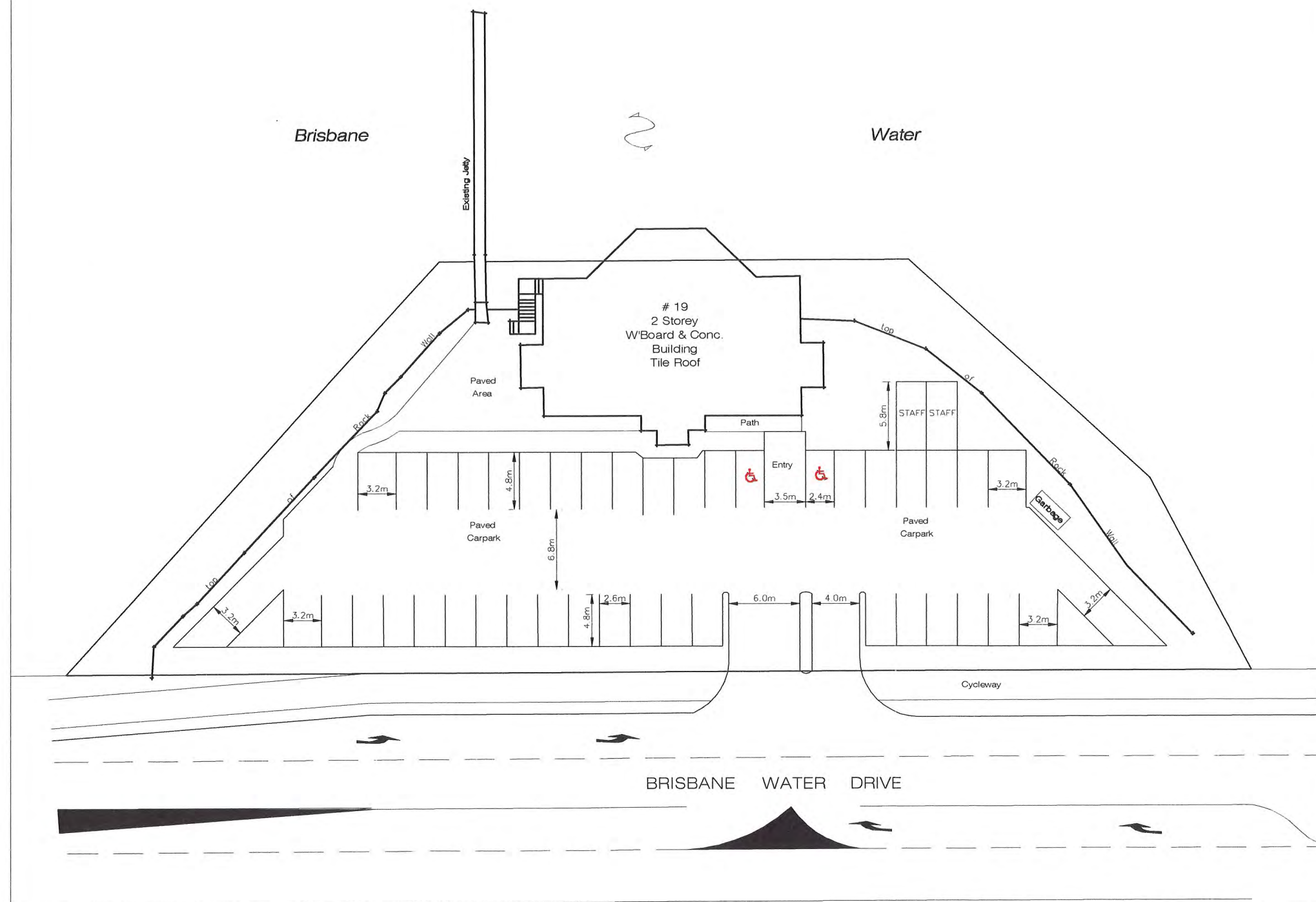
REV.	DATE	AMENDMENT	DRAWN	CHECK	DESIGN	VERIFY	SCALES		Central Coast 1 Bounty Close P.O. Box 2717, Tuggerah NSW 2259 Phone (02) 4305 4300 Fax (02) 4305 4303 enquiries@adwjohnson.com.au www.adwjohnson.com.au ABN 62 129 445 798	CLIENT	PROPERTY DESCRIPTION		PROJECT 150134 - BOAT HOUSE MARINA			
													PLAN TITLE  PROPOSED MARINA LAYOUT			
													PROJECT No. 150134	DISCIPLINE SK	NUMBER 001	REV. C
A	9/07/10	PRELIMINARY ISSUE	KT	AC												
B	19/08/10	MARINA REVISION	KT	AC												
C	20/08/10	MARINA - RAMP REVISION	KT	AC												
DESIGN BY: S. J.							ALL DIMENSIONS ARE IN METRES DO NOT SCALE									



Major Project Number: **MP 10\_0209** approved on **9 May 2012** by the Planning Assessment Commission, as delegate for the Minister for Planning & Infrastructure, in accordance with the *Environmental Planning & Assessment Act 1979*, subject to conditions of approval.


*Brisbane*

Water

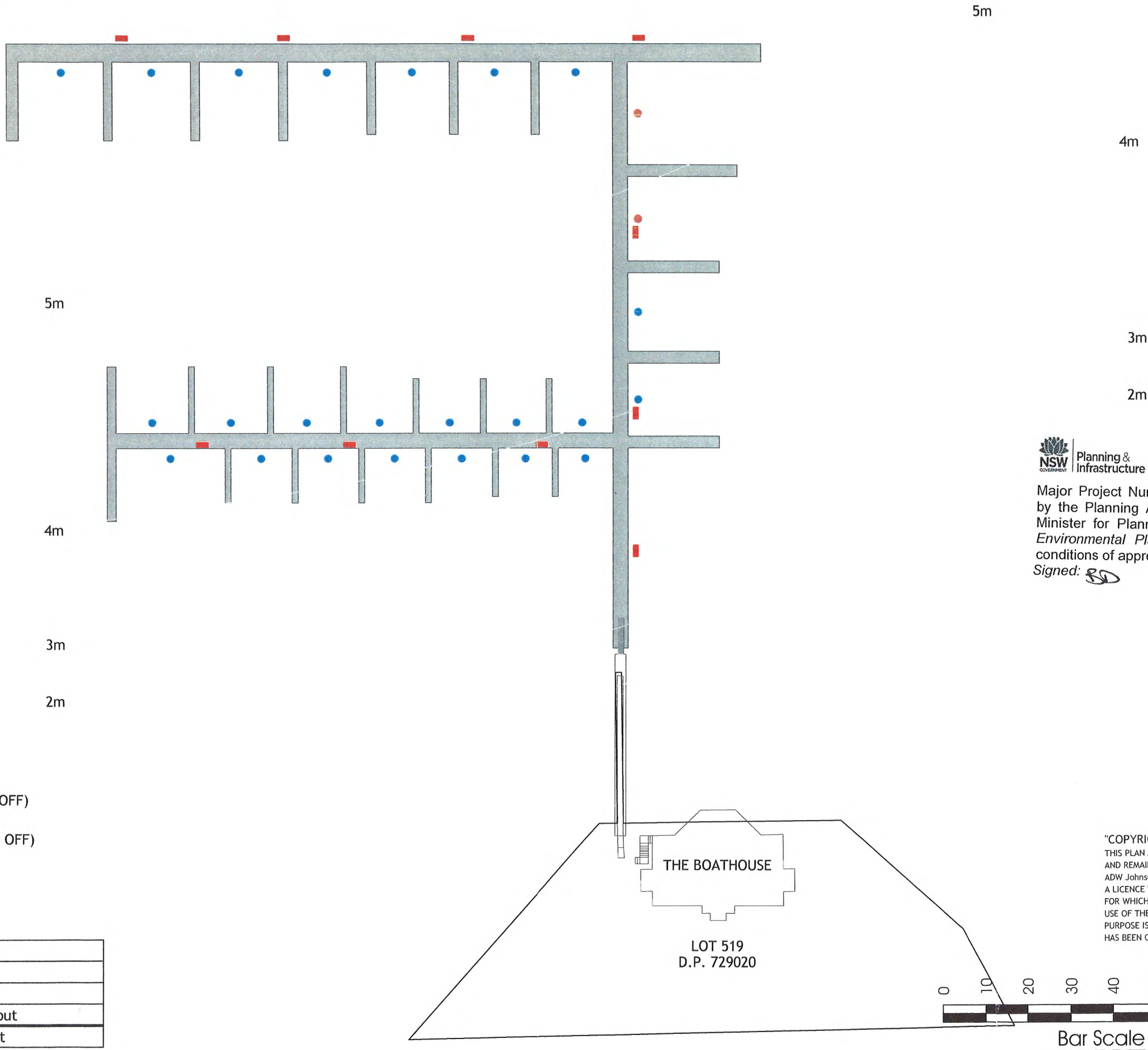


NOTE: EXISTING CARPARK LAYOUT AND SERVICES ARE NOT SHOWN IN THIS DRAWING

PRELIMINARY ISSUE  
NOT FOR CONSTRUCTION

REV.	DATE	AMENDMENT	DRAWN	CHECK	DESIGN	VERIFY	SCALES	 Central Coast 2 Bounty Close, P O Box 3717, Tuggerah N.S.W. 2259 Phone: (02) 4305 4300 Fax: (02) 4305 4399 email: coast@adwjohnson.com.au www.adwjohnson.com.au ABN 62 129 445 398	CLIENT  GEMSTED PTY LTD	PROPERTY DESCRIPTION		PROJECT PROPOSED CARPARK							
A	20/07/10	Preliminary Issue	K.B.	A.C.	K.B.	A.C.	 A1 / A3 1:200 / 1:400			LOT 510 D.P. 729020 BRISBANE WATER DRIVE KOOLEWONG		PLAN TITLE	PROPOSED CARPARK LAYOUT (44 SPACES) TYPICAL SERVICE VEHICLE AND STANDARD CAR TURNING TEMPLATES						
DESIGN FILE: S-1							ALL DIMENSIONS ARE IN METRES. DO NOT SCALE				SURVEYED	OTHERS	DATUM	A.H.D.	PROJECT No.	DISCIPLINE	NUMBER	REVISION	
															150134	-	DA	-	001





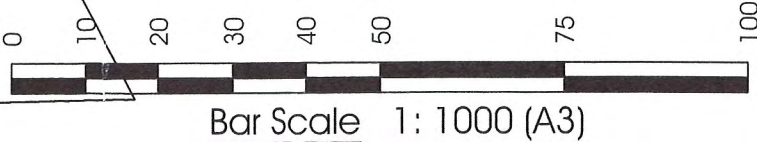
- I PHASE (15amp) - 2 x SOCKETS (22 OFF)
- I PHASE (15amp) - 2 x SOCKETS (3 OFF)  
III PHASE (32amp) - 2 x SOCKETS
- FIRE HOSE REELS

A	1/07/2011	Initial Layout
Ver.	Date	Comment

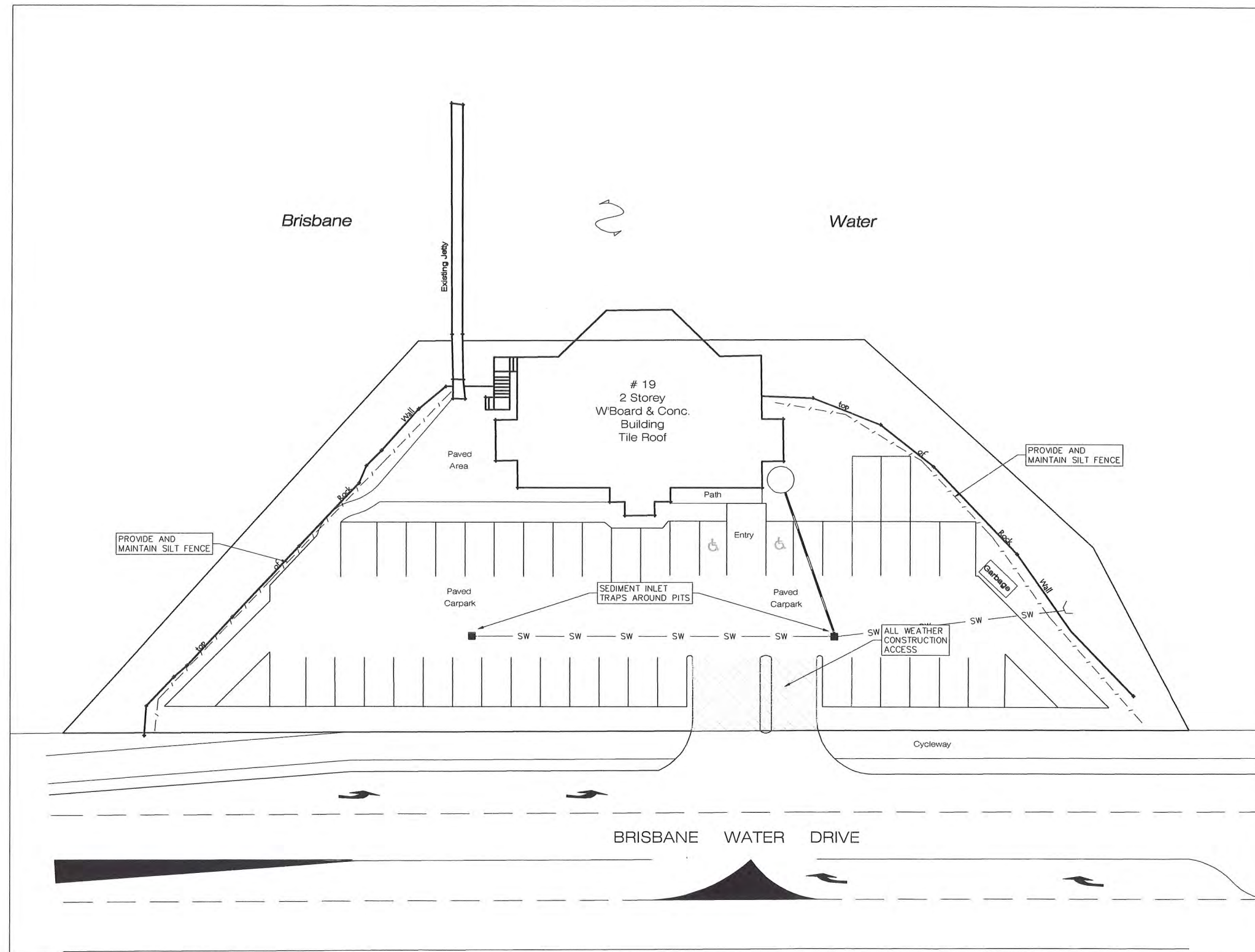


Major Project Number: **MP 10\_0209** approved on **9 May 2012** by the Planning Assessment Commission, as delegate for the Minister for Planning & Infrastructure, in accordance with the *Environmental Planning & Assessment Act 1979*, subject to conditions of approval.  
Signed:

"COPYRIGHT NOTICE"  
THIS PLAN AND THE INFORMATION IT CONTAINS ARE COPYRIGHT AND REMAIN THE PROPERTY OF ADW Johnson Pty Ltd. ADW Johnson Pty Ltd GRANTS TO THE CLIENT NAMED ON THIS PLAN A LICENCE TO USE THE INFORMATION HEREON FOR THE PURPOSE FOR WHICH WE WERE ENGAGED TO PERFORM THE WORK. USE OF THE PLAN AND INFORMATION IT CONTAINS FOR ANY OTHER PURPOSE IS NOT PERMITTED UNLESS PRIOR WRITTEN APPROVAL HAS BEEN OBTAINED FROM ADW Johnson Pty Ltd.







DETAIL PLAN  
SCALE 1:200

## LEGEND

- SW — EXISTING STORMWATER PIPE  
 — PROPOSED STORMWATER PIPE  
 - - - SILT FENCE  
 — PIT INLET CONTROLS

## EROSION AND SEDIMENT CONTROL NOTES

1. EROSION AND SEDIMENT CONTROL MEASURES ARE TO BE CONSISTENT WITH THE "MANAGING URBAN STORMWATER" - 3RD EDITION (1998) PREPARED BY THE NSW DEPARTMENT OF HOUSING AND GOSFORD CITY COUNCIL REQUIREMENTS.
2. DISTURBED AREAS TO BE KEPT TO A MINIMUM.
3. CONTROL CLEAN WATER FROM ABOVE THE SITE AND THROUGH THE SITE.
4. ERECT AND MAINTAIN SILT FENCES AT THE DOWNSLOPE SIDE OF DISTURBED AREA DURING CONSTRUCTION.
5. CONSERVE ALL TOPSOIL, STOCKPILE AND PROTECT FOR REUSE ON SITE.
6. STOCKPILES OF MATERIAL TO BE PLACED AWAY FROM DRAINAGE FLOW PATHS AND HEAVILY TRAFFICABLE AREAS AND TO BE SURROUNDED BY SILT FENCING AT ALL TIMES.
7. PROTECT ALL DISTURBED AREAS FROM EROSION.
8. MINIMISE SEDIMENTATION.
9. PLACE SEDIMENT INLET TRAPS AROUND ALL PITS WITHIN AND DOWNSTREAM OF THE DEVELOPMENT.
10. CONSTRUCT AN ALL WEATHER CONSTRUCTION ACCESS TO THE SITE.
11. AREAS OUTSIDE THE BOUNDARIES OF THE PROPOSED DEVELOPMENT WILL BE FENCED WITH NO GO FENCING TO KEEP THE AREAS FREE FROM DISTURBANCE OF MACHINERY, PARKED VEHICLES AND WASTE MATERIAL.
12. ALL DISTURBED AREAS ARE TO BE REVEGETATED OR OTHERWISE PROTECTED AS SOON AS PRACTICAL.
13. MAINTAIN ALL EROSION AND SEDIMENT CONTROL MEASURES UNTIL COMPLETE REHABILITATION IS ACHIEVED.



Major Project Number: **MP 10\_0209** approved on **9 May 2012** by the Planning Assessment Commission, as delegate for the Minister for Planning & Infrastructure, in accordance with the *Environmental Planning & Assessment Act 1979*, subject to conditions of approval.

Signed:

NOTE: EXISTING CARPARK LAYOUT AND SERVICES ARE NOT SHOWN IN THIS DRAWING

**PRELIMINARY ISSUE**  
NOT FOR CONSTRUCTION

REV.	DATE	AMENDMENT	DRAWN	CHECK	DESIGN	VERIFY	SCALES	CLIENT	PROPERTY DESCRIPTION	PROJECT
A	13.07.11	Preliminary Issue	N.D.	A.C.	N.D.	A.C.	0 5 10 A1 / A3 1:200 / 1:400	GEMSTED PTY LTD	LOT 510 D.P. 729020 BRISBANE WATER DRIVE KOOLEWONG	PROPOSED CARPARK
DESIGN FILE: S:\			ALL DIMENSIONS ARE IN METRES. DO NOT SCALE			SURVEYED OTHERS		DATUM A.H.D.	PROJECT No. 150134	DISCIPLINE SWMP
Plotted By: \$(GETVAR,??)			Plot Date: 13/07/11 - 15:01			Cad File: S:\150134 - Koolewong Marina\Admin\Reports\Planning\Fig 4.dwg		NUMBER 04		REV. A



Central Coast  
2 Bounty Close,  
P.O. Box 3717,  
Tuggerah N.S.W. 2259  
Phone: (02) 4305 4300  
Fax: (02) 4305 4399  
email: coast@adwjohnson.com.au  
www.adwjohnson.com.au  
ABN 62 129 445 398



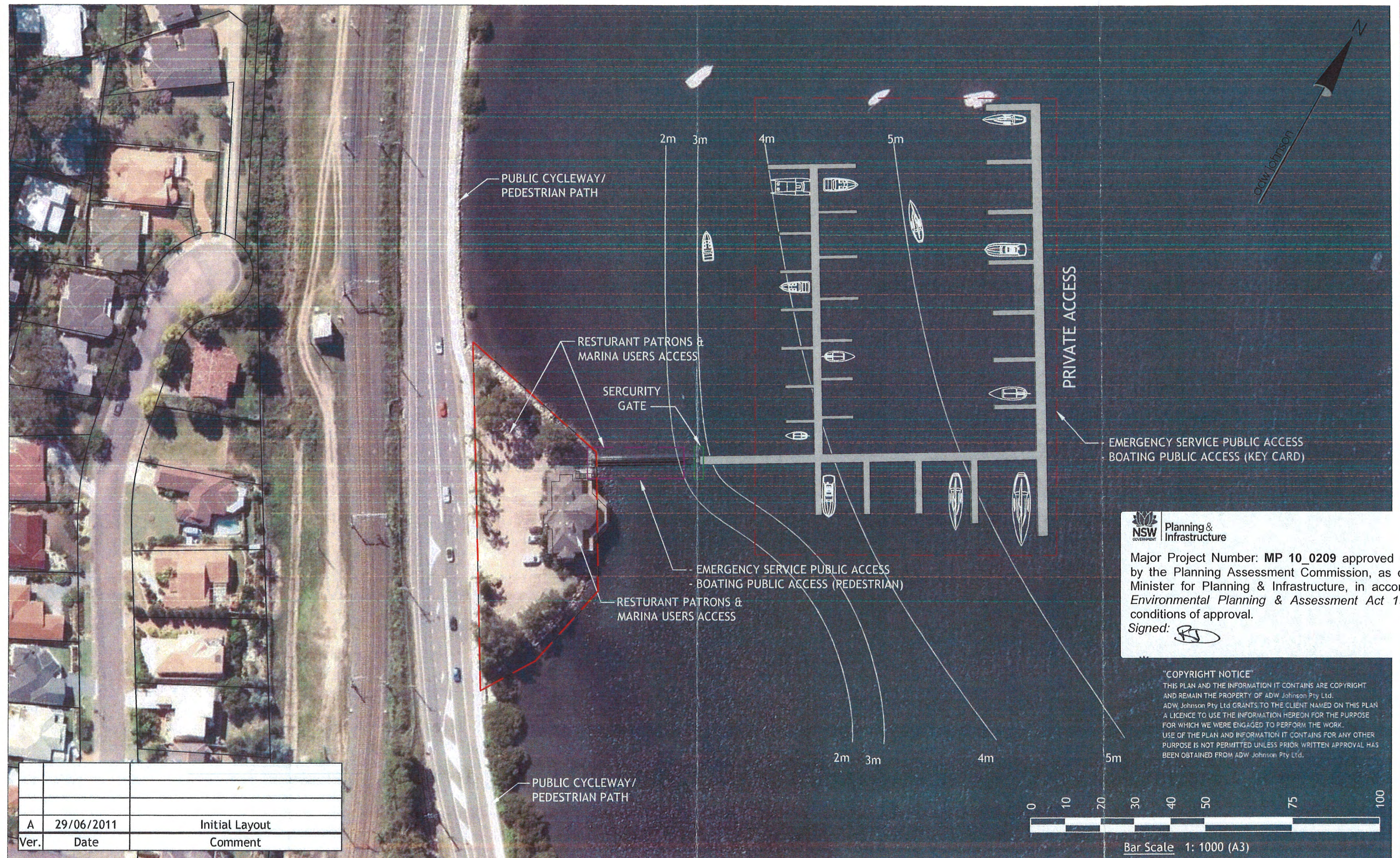
Plan of: Proposed Marina for  
Lot 519 in D.P.729020  
PUBLIC ACCESS PLAN

Location: Brisbane Water Drive  
Koolewong

Council: Gosford

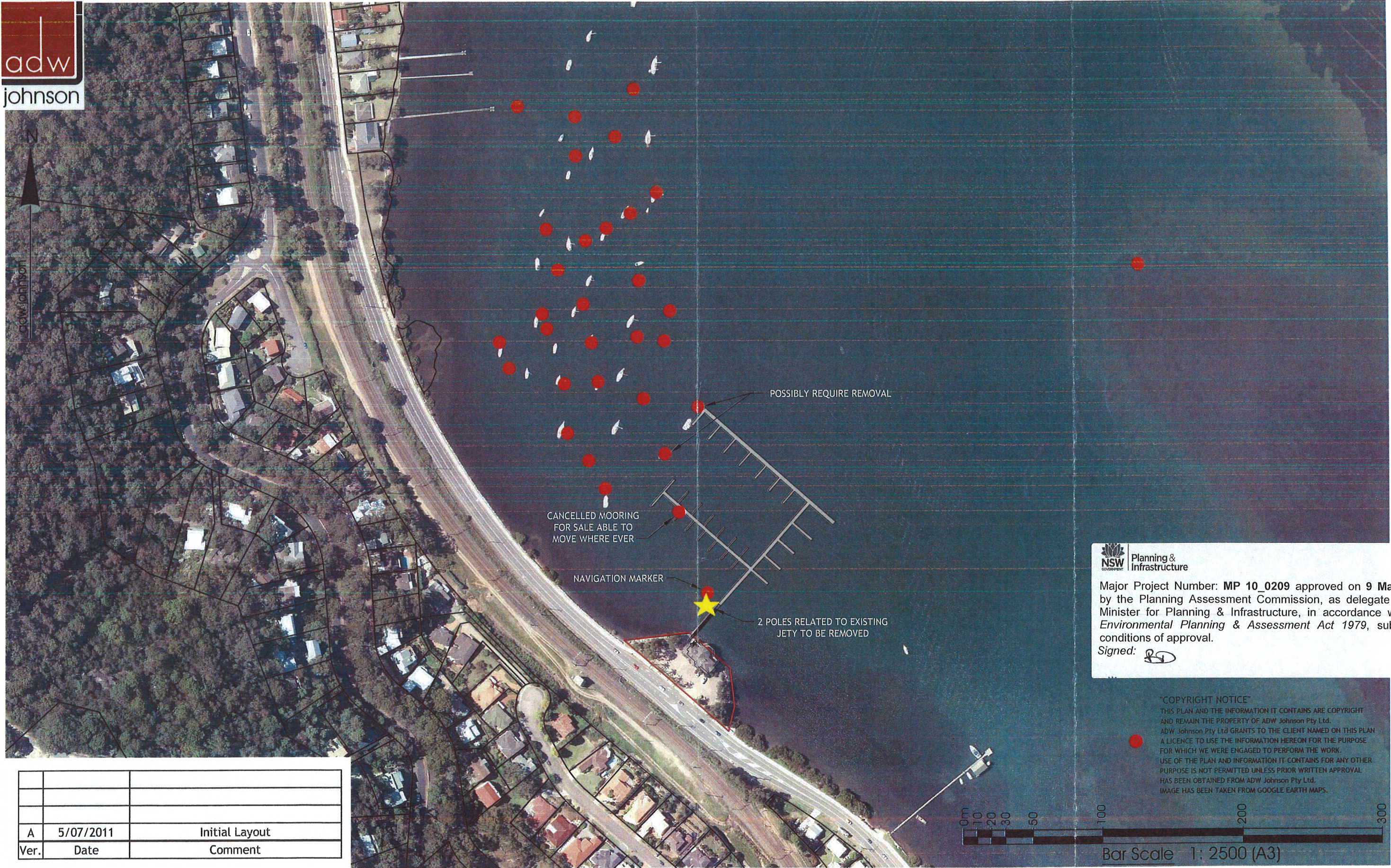
Date: 29TH JUNE 2011  
Sheet: 2 of 4  
Plan by: K.T.  
Project Manager: A.C./S.VD.  
Office: Central Coast  
Plan Purpose: PUBLIC ACCESS PLAN

Version: A (29/06/2011)  
Client: Gemsted Pty Ltd  
Survey: S:12d\150134  
AutoCad: S:\150134-SK-003-A.dwg  
Our Ref: 150134



Plotted By: kurttt    Plot Date: 24/08/11 - 12:55    Cad File: S:\150134 - KooLeWong Marina\Drawings\PLANNING\150134-SK-003-A.dwg





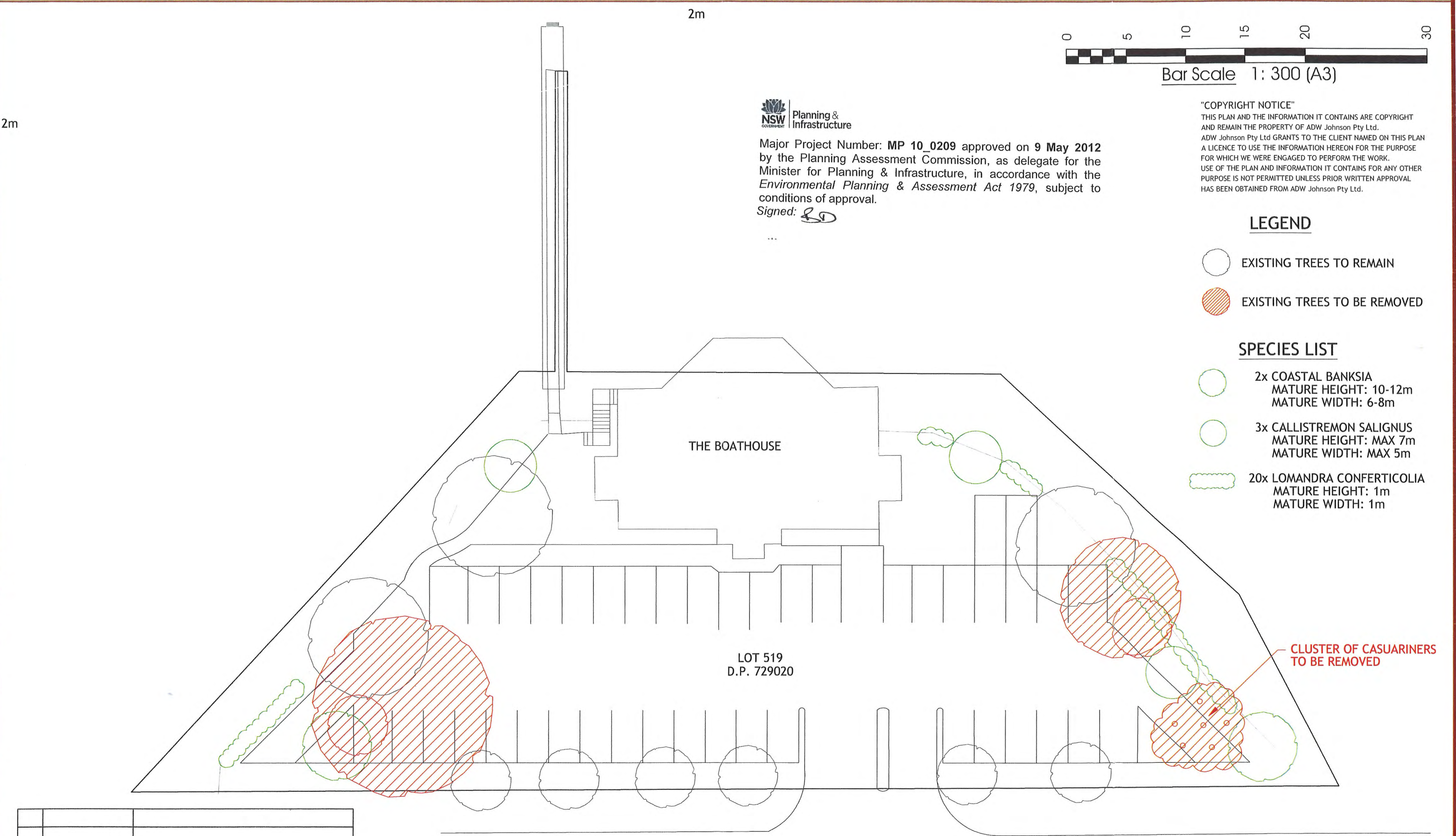
Major Project Number: **MP 10\_0209** approved on **9 May 2012** by the Planning Assessment Commission, as delegate for the Minister for Planning & Infrastructure, in accordance with the *Environmental Planning & Assessment Act 1979*, subject to conditions of approval.  
Signed:

**"COPYRIGHT NOTICE"**  
THIS PLAN AND THE INFORMATION IT CONTAINS ARE COPYRIGHT AND REMAIN THE PROPERTY OF ADW Johnson Pty Ltd. ADW Johnson Pty Ltd GRANTS TO THE CLIENT NAMED ON THIS PLAN A LICENCE TO USE THE INFORMATION HEREON FOR THE PURPOSE FOR WHICH WE WERE ENGAGED TO PERFORM THE WORK. USE OF THE PLAN AND INFORMATION IT CONTAINS FOR ANY OTHER PURPOSE IS NOT PERMITTED UNLESS PRIOR WRITTEN APPROVAL HAS BEEN OBTAINED FROM ADW Johnson Pty Ltd. IMAGE HAS BEEN TAKEN FROM GOOGLE EARTH MAPS.

A	5/07/2011	Initial Layout
Ver.	Date	Comment

Bar Scale 1: 2500 (A3)





A	11/07/2011	Initial Layout
Ver.	Date	Comment