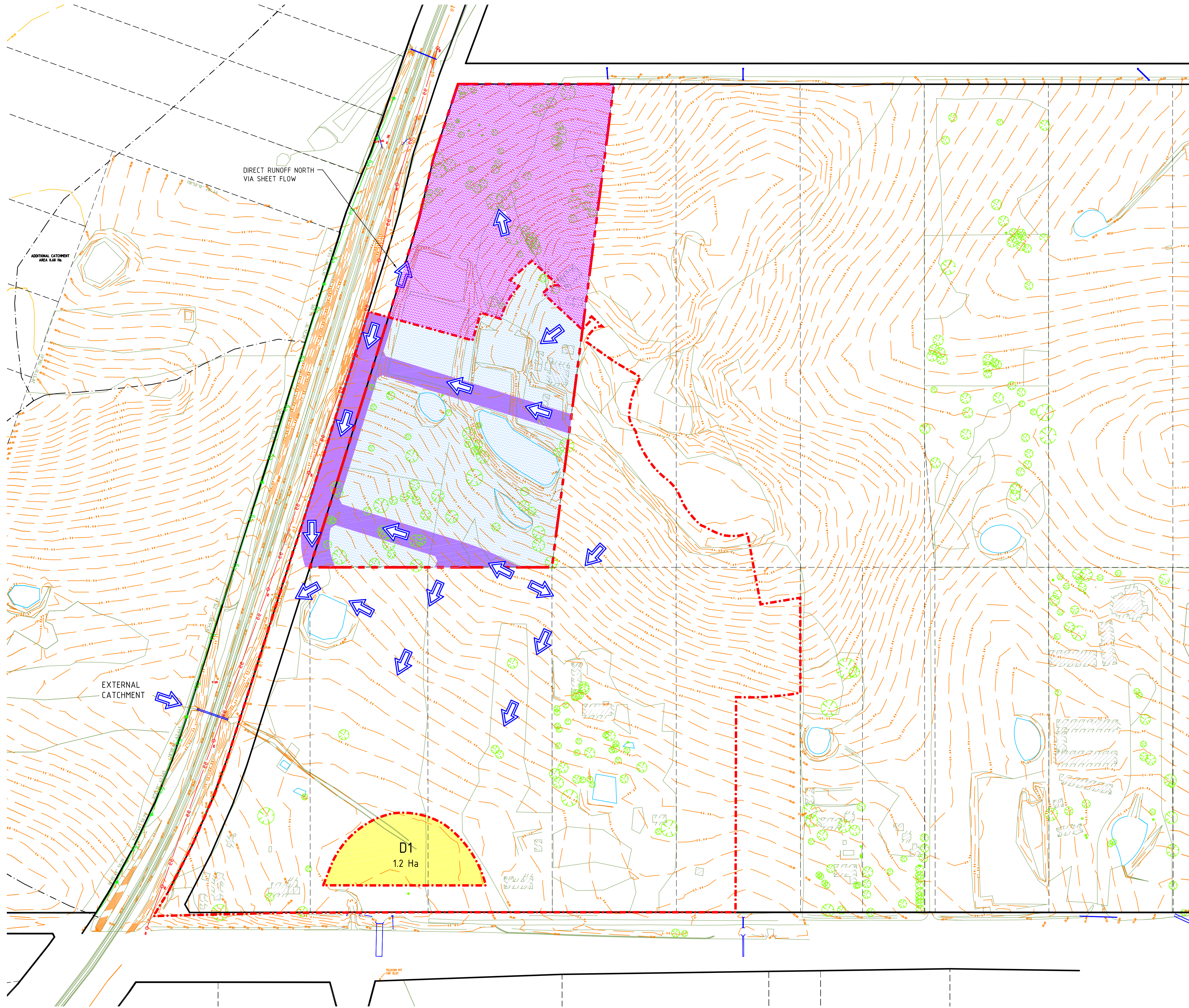


300mm A1 SHEET

200mm

100mm



LEGEND	
D1	Proposed southern precinct detention
	Northern Catchment
	Catchment Boundary (final determined by road grading)
	Woolworths Site Boundary
	Flow direction
	Woolworth's southern catchment private domain
	Woolworth's southern catchment public domain

INTEGRATED WATER MANAGEMENT STRATEGY

1. WATER QUANTITY MANAGEMENT

Southern Catchment Philosophy for Woolworths portion

- To manage flows from private and public domain areas
- Detention Basin (D1) to manage Woolworths contributing catchment based on impervious area of 65%
- Total Woolworths catchment Area draining to D1 = 5.7356ha
- Total Volume from Woolworths portion to be managed by D1 = 1525m3 (Calculated from total catchment area at 65% impervious volume) to be managed as follows
 - 100% of runoff from roads to drain directly to detention basin D1. (Say Xm3)
 - Additional storage volume from Woolworths private domain contribution to be provided in D1 = (1525-X)m3.
 - Provide on site detention on private domain to manage additional storage required (in excess of the 1525m3).

Northern Catchment - to be confirmed.

2. WATER QUALITY

- A) Woolworth's Private Domain
 - Managed 'at source'
 - Consider GPT'S and water quality treatment in each site.
 - Consider on site recycling of H₂O (Harvesting to remove nutrients).
- B) Public Domain In Woolworth's Site (Public Roads)
 - Manage at source
 - Rain gardens in East-West streets and other street subject to grade detention.

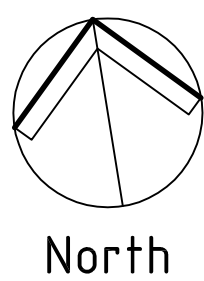
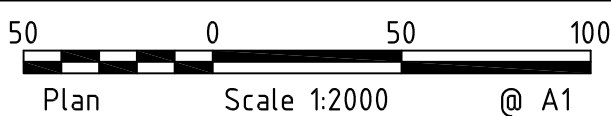
Note: Extent of private/public domain to be determined at final design

PRELIMINARY - NOT FOR CONSTRUCTION

Copyright
This drawing remains the property of Mott MacDonald Pty. Ltd.
It may only be used for the purpose for which it was commissioned &
in accordance with the terms of engagement for that commission.
Mott MacDonald denies any liability or responsibility for loss or
damage caused by the inappropriate use of this drawing.

* Drawing Status Warning: Unless there is an authorised Mott
MacDonald signature at *, this drawing is not authorised for issue.

This Drawing may have been prepared using **COLOUR**,
and may be incomplete if copied to **BLACK & WHITE**



Level 2, 60 Pacific Highway
St Leonards, NSW 2065
Australia
PO Box 151, St Leonards
NSW 1590, Australia
T +61 (0)2 9439 2633
F +61 (0)2 9439 4505
W www.mottmac.com.au

Project
**WOOLWORTHS WARNERVALE
UPDATED INFRASTRUCTURE
ASSESSMENT PLANS**

Client
WOOLWORTHS
Architect/Project Manager

Drawing Title
**STORMWATER MANAGEMENT
PHILOSOPHY**

Drawing No.
10S183C -MPEA110

Sheet
10
Of
14

Rev
B

Rev	Amendment / Reason For Issue	Date	Drawn Completed by	Designed & Checked by	Verified by X = Not verified	Issue Authorised (*)
B	ISSUE FOR INFORMATION FOR UPDATED INFRASTRUCTURE ASSESSMENT REPORT	26.03.13	IS/MMc	SR/PMcB	X	PMcB
A	ISSUE FOR INFORMATION FOR UPDATED INFRASTRUCTURE ASSESSMENT REPORT	12.10.12	IS/MMc	MMc/PMcB	X	PMcB