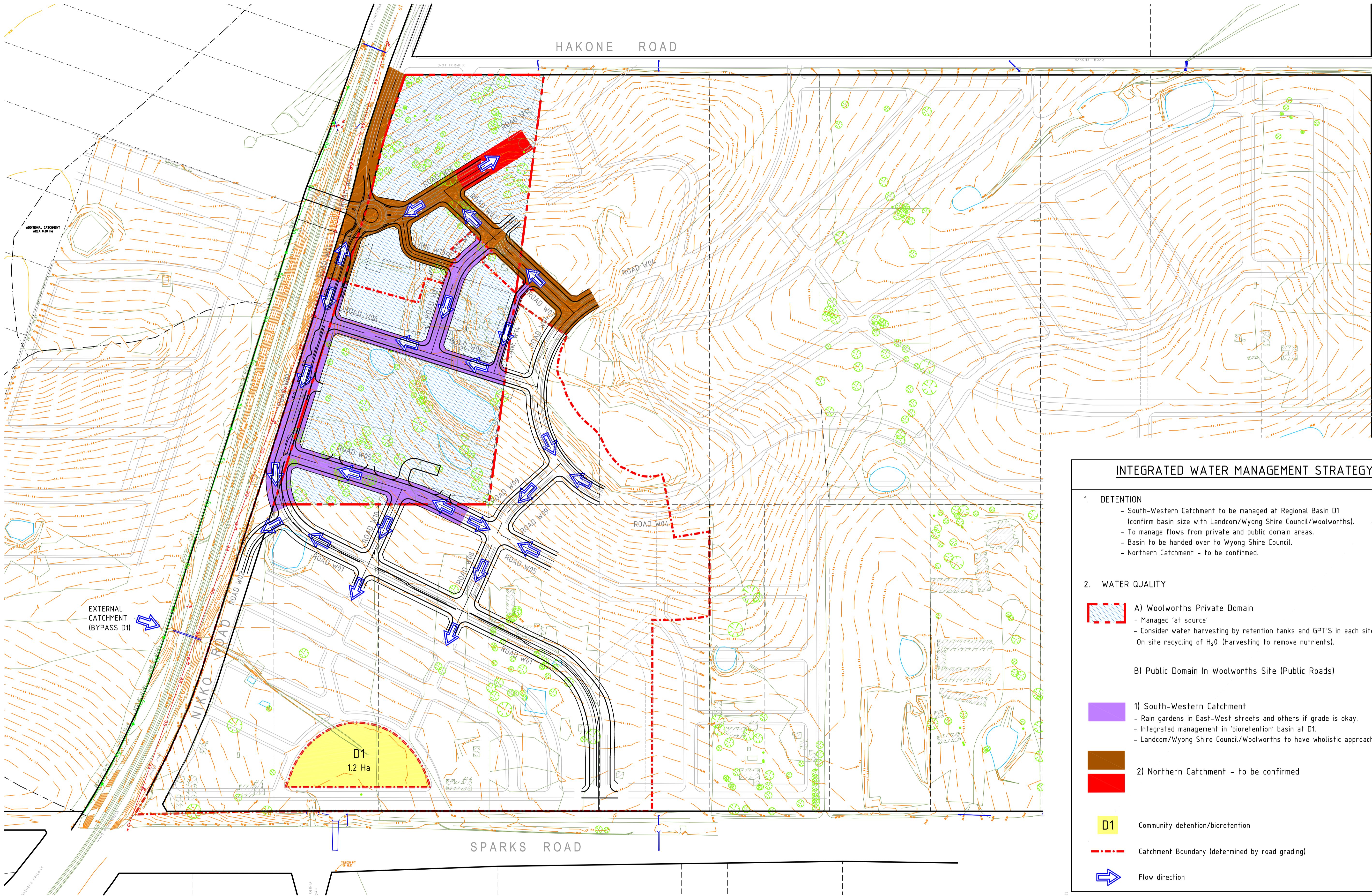


300mm A1 SHEET

200mm

100mm



INTEGRATED WATER MANAGEMENT STRATEGY

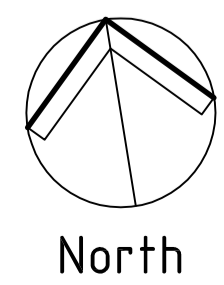
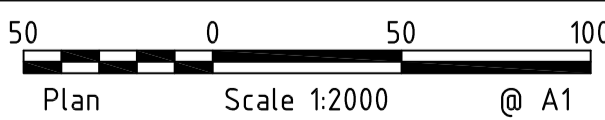
1. DETENTION
- South-Western Catchment to be managed at Regional Basin D1 (confirm basin size with Landcom/Wyong Shire Council/Woolworths).
  - To manage flows from private and public domain areas.
  - Basin to be handed over to Wyong Shire Council.
  - Northern Catchment - to be confirmed.
2. WATER QUALITY
- A) Woolworths Private Domain
- Managed 'at source'
  - Consider water harvesting by retention tanks and GPT'S in each site and On site recycling of H<sub>2</sub>O (Harvesting to remove nutrients).
- B) Public Domain In Woolworths Site (Public Roads)
- 1) South-Western Catchment
- Rain gardens in East-West streets and others if grade is okay.
  - Integrated management in 'bioretention' basin at D1.
  - Landcom/Wyong Shire Council/Woolworths to have wholistic approach.
- 2) Northern Catchment - to be confirmed
- D1 Community detention/bioretention
- Catchment Boundary (determined by road grading)
- ➡ Flow direction

PRELIMINARY - NOT FOR CONSTRUCTION

Copyright  
This drawing remains the property of Hughes Trueman Pty. Ltd.  
It may only be used for the purpose for which it was commissioned &  
in accordance with the terms of engagement for that commission.  
Hughes Trueman denies any liability or responsibility for loss or  
damage caused by the inappropriate use of this drawing.

\* Drawing Status Warning: Unless there is an authorised Hughes  
Trueman signature at \*, this drawing is not authorised for issue.

This Drawing may have been prepared using **COLOUR**,  
and may be incomplete if copied to **BLACK & WHITE**



**HughesTrueman**  
Consulting Engineers Planners & Managers

ABN 53 831 529 091  
Level 2, 60 Pacific Hwy, PO Box 151, ST LEONARDS NSW 2065  
T +61 2 9439 2633 F +61 2 9438 4505 stleonards@hughestrueman.com.au

Branches @  
St Leonards  
Parramatta  
Canberra  
Wagga Wagga

COMBUST AUSTRALIA  
Member Firm

|  |  |  |                 |
|--|--|--|-----------------|
| Project<br><b>WOOLWORTHS WARNERVALE<br/>INFRASTRUCTURE<br/>MASTER PLANNING</b> |  | Drawing Title<br><b>STORMWATER MANAGEMENT<br/>PHILOSOPHY</b> |                 |
| Client<br><b>WOOLWORTHS</b>  |  | Drawing No.<br><b>10S183C-MPEA16</b>                         |                 |
| Architect/Project Manager<br><b>WSP</b>  |  | Sheet<br>16<br>Of<br>24                                      | Rev<br><b>A</b> |