

2.4 Architectural Drawings

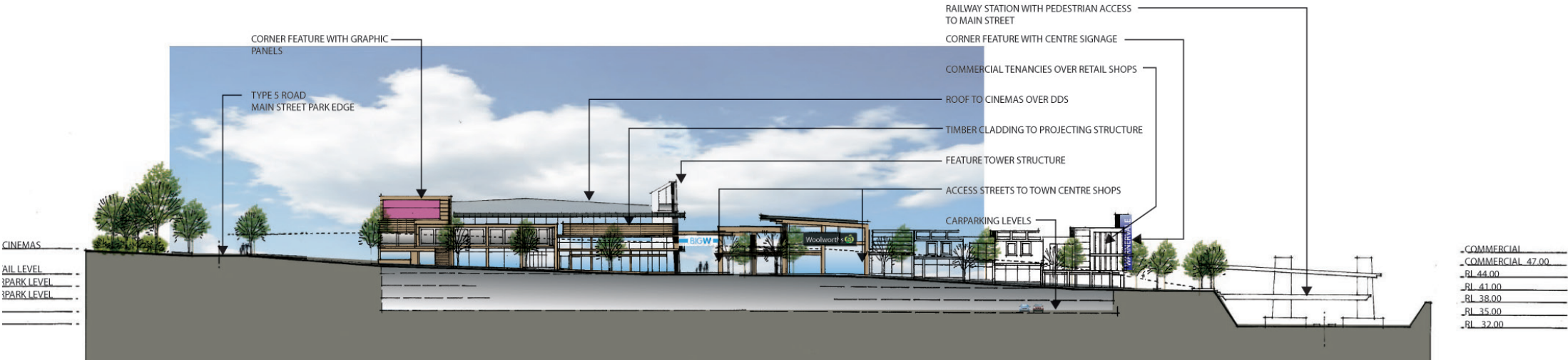
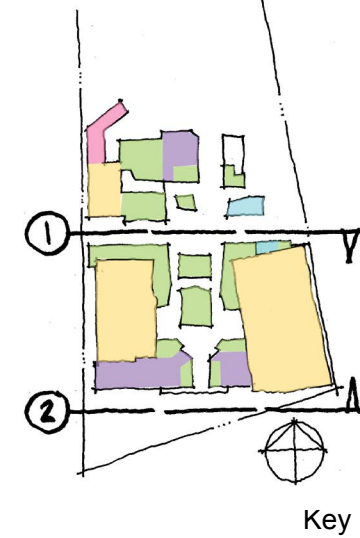
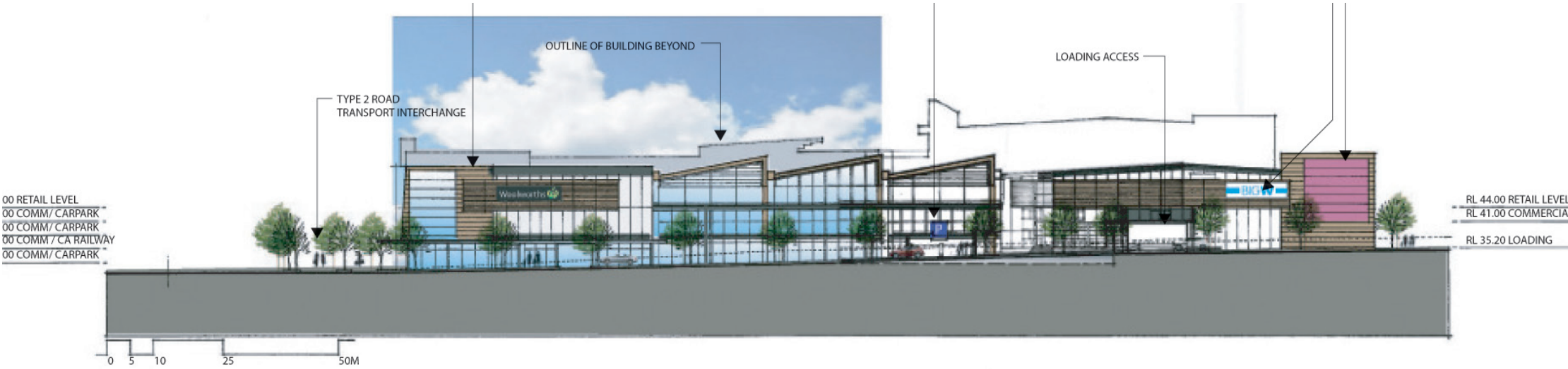


Figure 60: Southern site north and south elevation

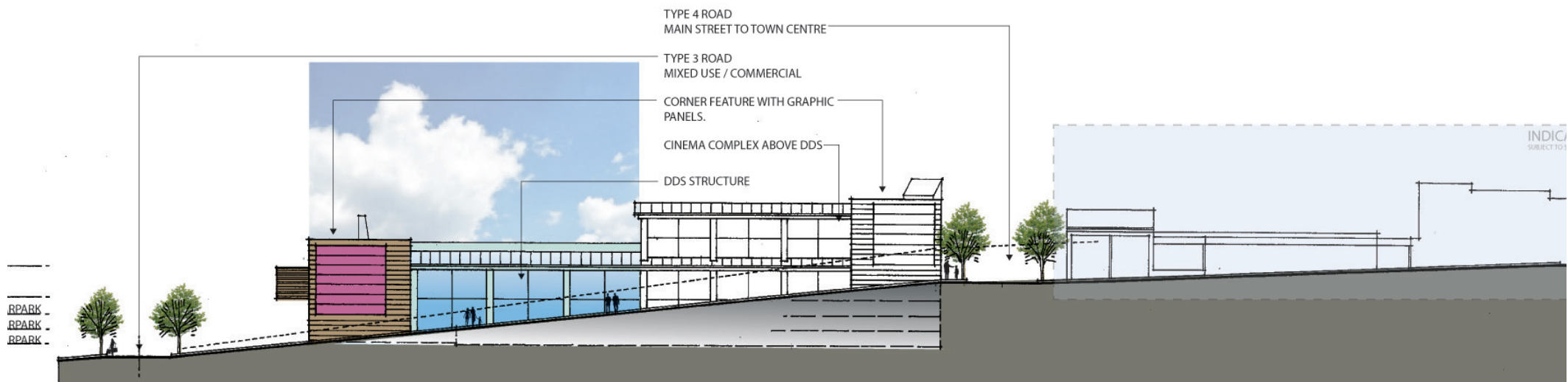
1 Southern Site North Elevation



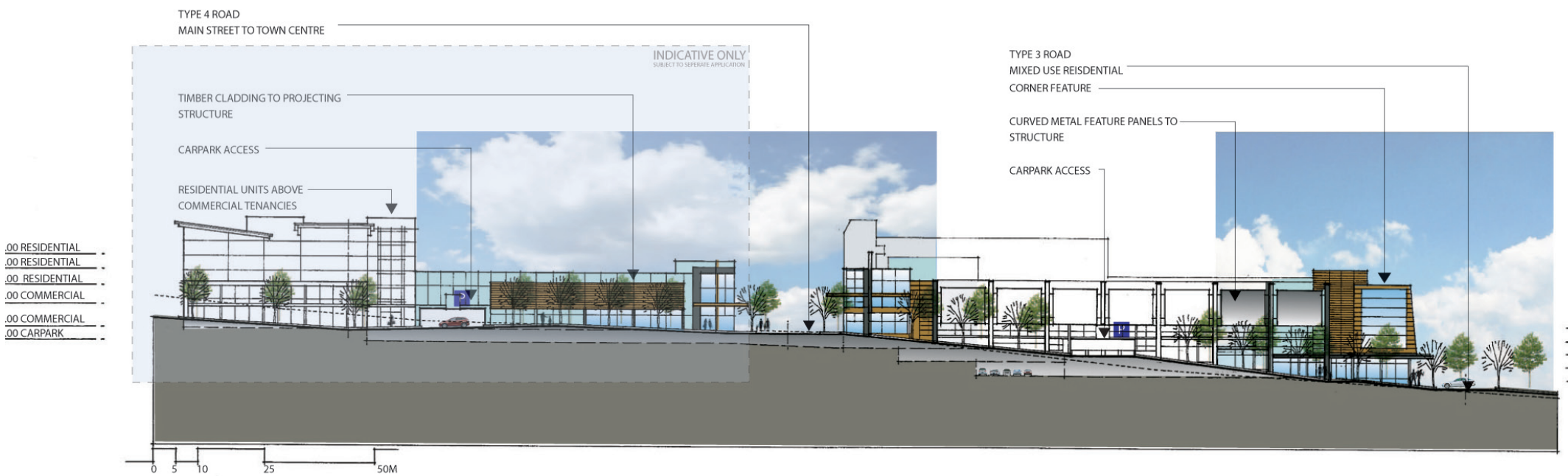
2 Southern Site South Elevation

2.4 Architectural Drawings

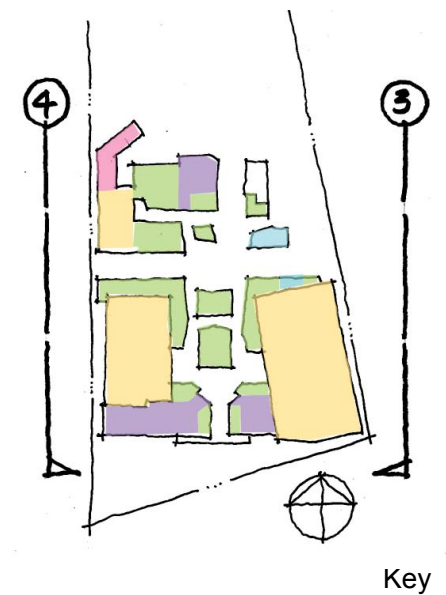
Figure 61: Southern site east elevation and west elevation along transport interchange



3 Southern Site East Elevation

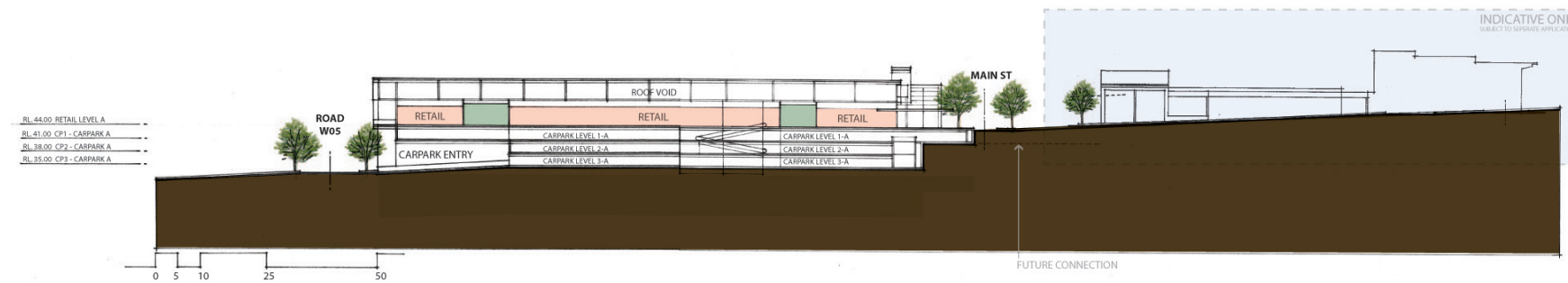


4 West Elevation Along Transport Interchange



2.4 Architectural Drawings

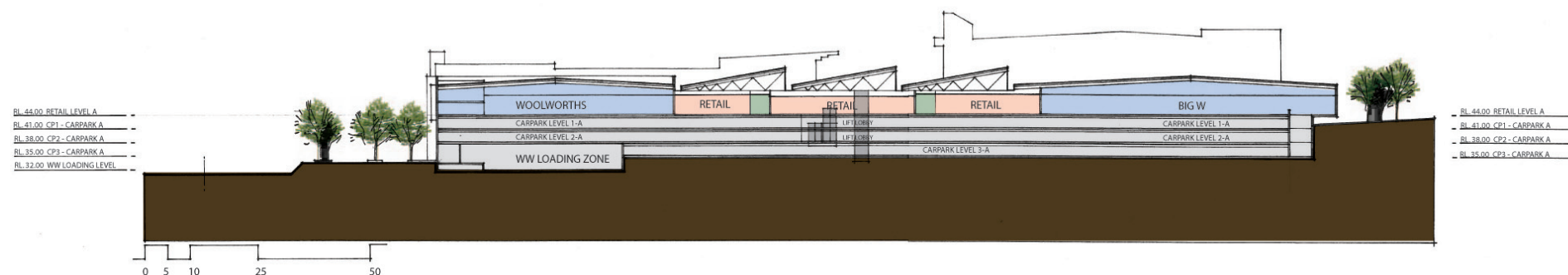
2.4.1 Town Centre Sections



Section 5

This section clearly shows how the car parking has been located beneath the primary retail floor which directly engages Main Street.

Figure 62: Section 5



Section 6

This section identifies the difference in height east west across the site. The retail level is well above the western ring road while the Big W DDS is below grade to the east. The anchor stores sandwich the smaller retailers that are located beneath this striking saw tooth roof form reminiscent of many rural/industrial buildings.

Figure 63: Section 6



2.5 Three Dimensional Studies



Figure 64: Three dimensional study of site looking from Sparks Road



Figure 65: Three dimensional study of site looking from the proposed Railway Station

TOWN CENTRE CIVIC PRECINCT - WTC | AUGUST 2011 -66-

2.5 Three Dimensional Studies

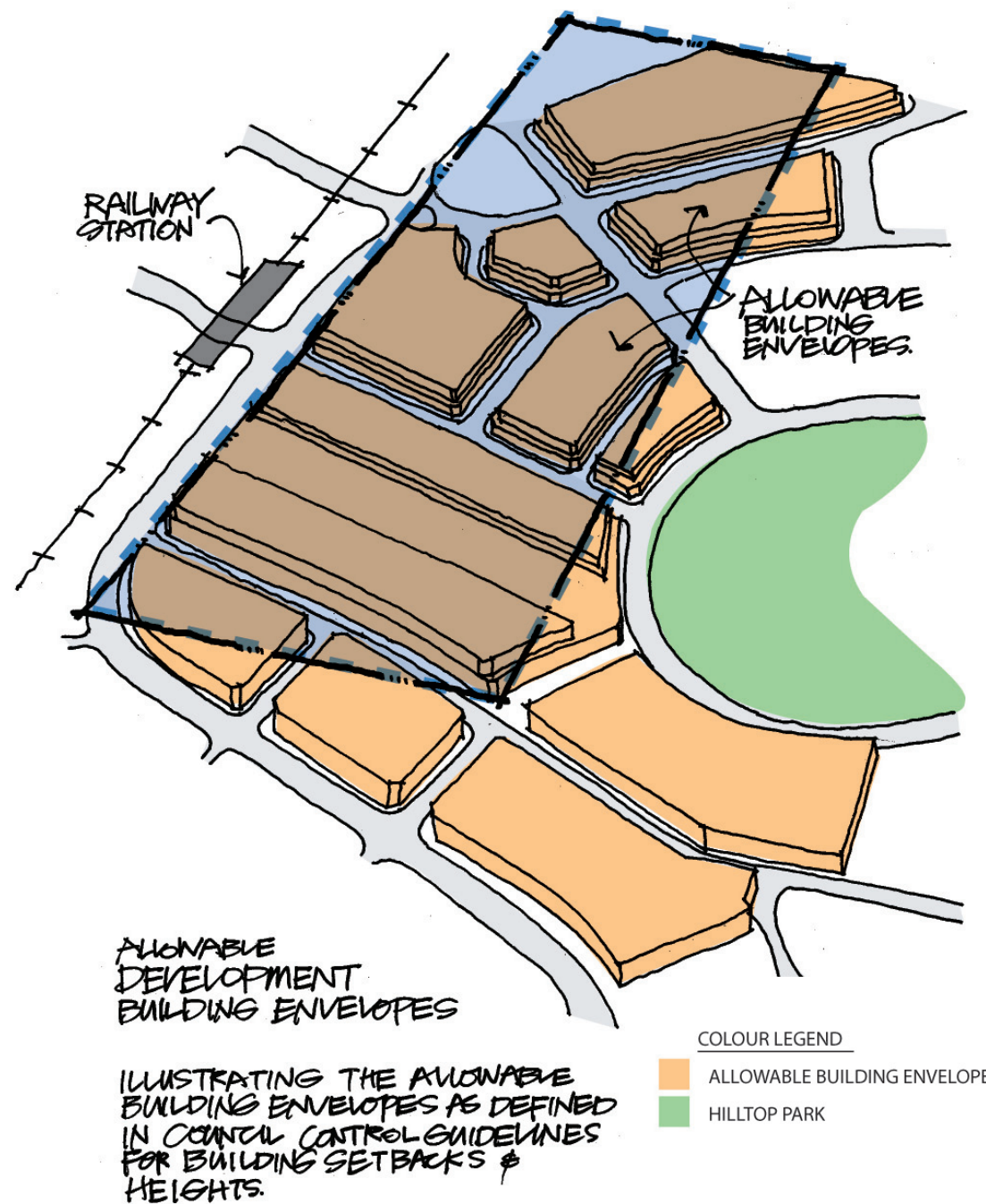


Figure 66: Allowable development building envelopes

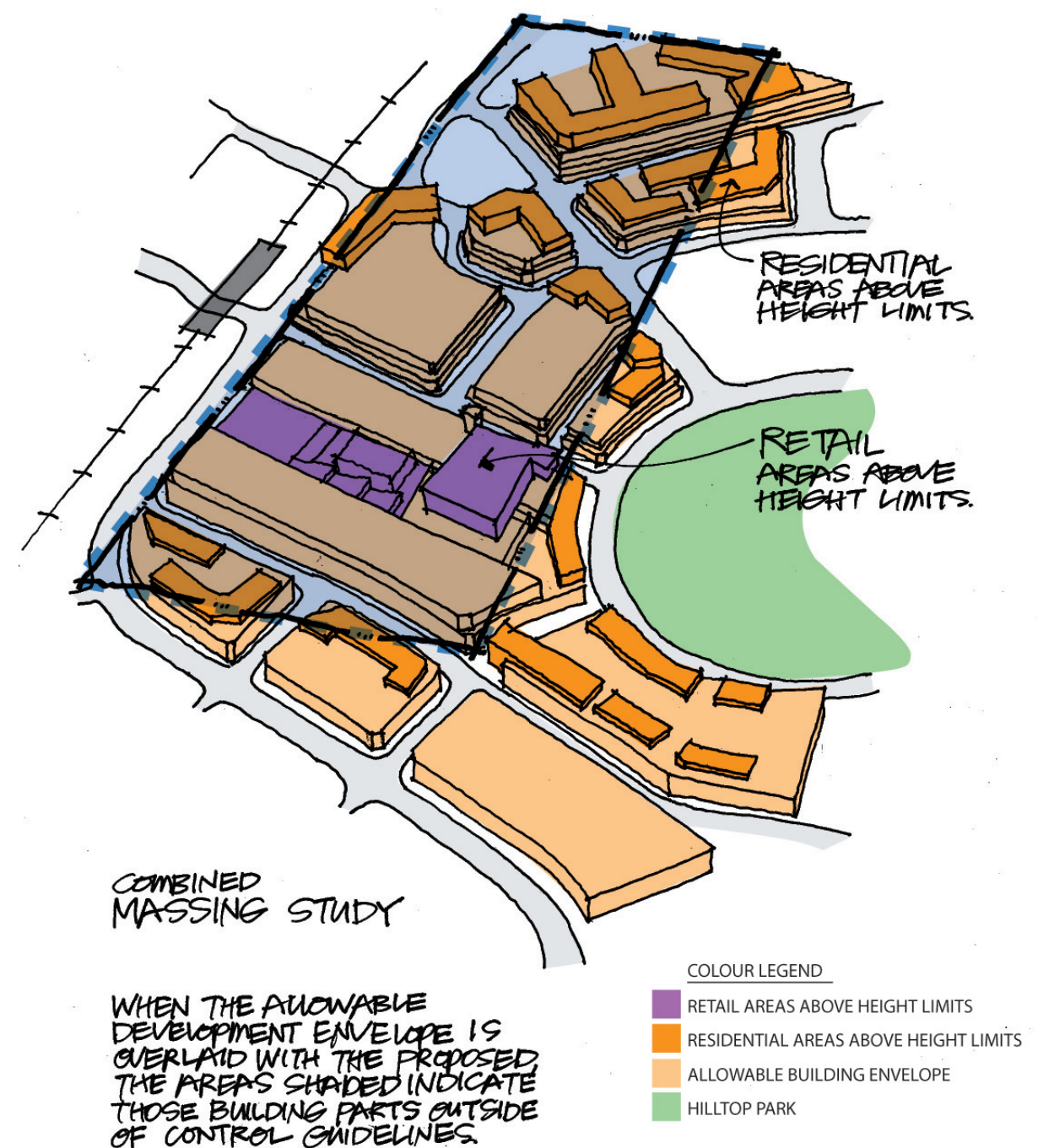


Figure 67: Combined massing study

TOWN CENTRE CIVIC PRECINCT - WTC | AUGUST 2011 -67-

2.5 Three Dimensional Studies



Figure 68: Proposed development building envelopes

TOWN CENTRE CIVIC PRECINCT - WTC | AUGUST 2011 -68-