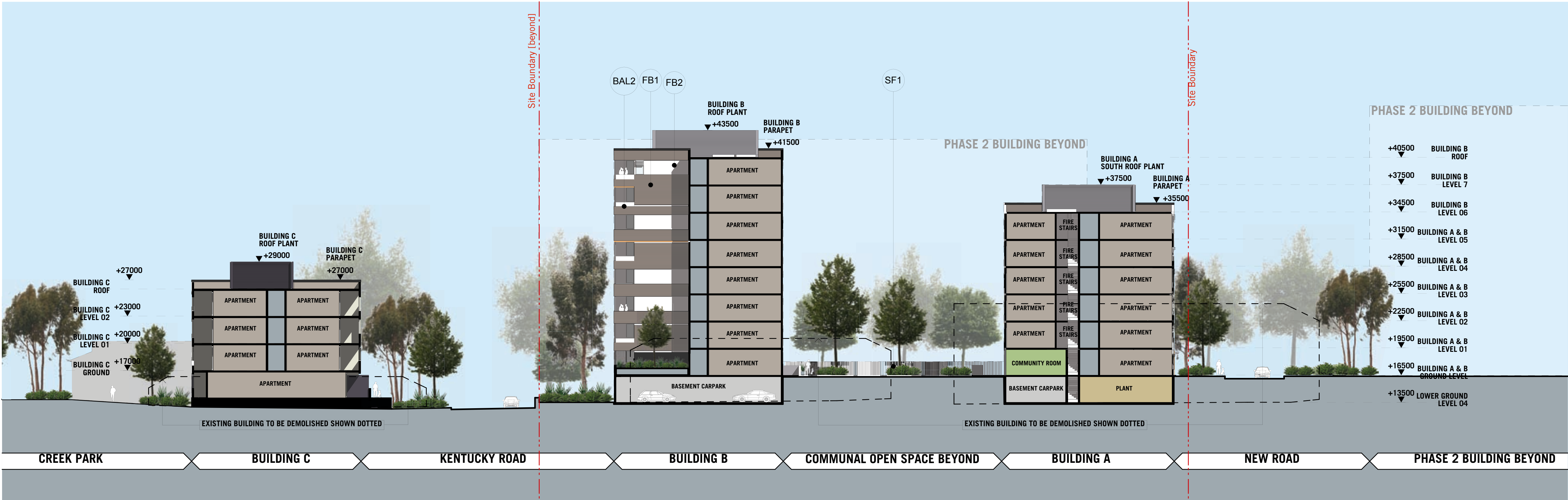


SECTION F-F



SECTION E-E

MATERIALS + FINISHES LEGEND

**BAL1** Aluminium framed balustrades with white translucent glass infill  
**BAL2** Part face brick balustrade with framed white translucent glass above  
**BAL3** Face brick balustrade only  
**COL1** Rectangular rendered column, Painted finish.  
**CT1x** Glazed ceramic feature tile - colour 1, 2, etc

**FB1** Face Brick - P6H Blue Steel Flash or equivalent, approved brick  
**FB2** Face Brick - Austral Colourbrick 'White' or equivalent, approved brick  
**FB3** Face Brick - 'Olive' or equivalent, approved brick  
**FB4** Face Brick - Bowral Bricks Gertrudis Brown or equivalent approved brick  
**GB1** Glazed Brick - Euroa Clay Products - 'Tangerine' or equivalent, approved brick  
**GB2** Glazed Brick - Euroa Clay Products - 'Toffee Apple' or equivalent approved brick

**GT1** Glass Type 1 - clear glazing  
**GT2** Glass type 2 - white opaque glazing  
**LV1** Metal louvers to plant, fire stairs and car park.  
**LV2** Black powdercoated finish to match adjacent painted render finish  
**PS1** Aluminium louvres - white powdercoat finish  
**PS1** Painted soffit. Feature colour.

**PSC1** Three quarter-height obscure privacy screens between balconies  
**RB1** Rendered brick - paint finish  
**SF1** Folded steel fence / gate - dark grey finish with warm highlight colour  
**SH1** Aluminium louver shutter - white powdercoat finish  
**WT1** Aluminium framed window/door system: Clear glass.

THERMAL SPECIFICATION

Refer to WINDTECH report WA985-01F03(rev0)  
External Walls: Brick cavity, lined, insulation  
Internal Walls: Plasterboard  
Party Walls: Cavity Panel wider than 70mm  
Windows: Single glazed, clear.  
Roof: Concrete, Insulation  
Ceilings: Plasterboard  
Floors: Concrete with Tiles/Carpet

BASIX Certification Number:  
Buildings A,B&C: 12345867

CLIENT  
**Payce Communities**  
Level 37, Chifley Tower  
2 Chifley Square  
Sydney, NSW, 2000

NOTES  
THIS DRAWING IS COPYRIGHT © AND SHALL REMAIN THE PROPERTY OF TURNER + ASSOCIATES ARCHITECTS NO



PROJECT TITLE  
**RIVERWOOD NORTH RESIDENTIAL RENEWAL**  
Washington Avenue & Kentucky Road, Riverwood  
DRAWING TITLE  
**Sections [EE\_ Buildings A,B & C] & [FF\_Building A]**

Rev.	Date	Approved by	Revision Notes	DRAWN	REV	NORTH
SCALE	1:250@A1, 50%@A3	JOB No.	09033	JR, SC, AC, JM		
STATUS	Project Application	DWG No.	PA302	REV	C	

**TURNER + ASSOCIATES**