

Matthew Lewis
Acting Manager – Stormwater
Asset Management division
Sydney Water Corporation
PO Box 399
Parramatta NSW 212

18 October 2012

**Re: Mixed Use development of the former Allied Mills site, 2-32 Smith Street, Summer Hill
(MP10_0155 and MP10_0180)**

Dear Matthew,

I refer to our meeting yesterday where the 2D modelling and sensitivity analysis undertaken by WMA Water was presented. The modelling has addressed the former flour mill site and surrounds, particularly the light rail corridor and the Hawthorne Canal. This modelling and analysis is informing the finalisation of the design for the redevelopment with particular regard to establishing minimum floor levels for the development and managing the flood hazard risk associated with the Hawthorne Canal and Smith Street flows. The modelling will inform the design of the pending Project Application for Stage 1 and subsequent Development Applications for Stages 2-4.

The modelling and analysis has guided the design of the proposed means of piping the Smith Street flows through the site as well as assisting with the treatment of the stormwater to meet the required water quality targets required by Sydney Water Corporation (SWC).

The modelling to date supports the veracity of the approach taken within the Concept Plan application to manage flood flows from the light rail corridor back into the Hawthorne Canal, the flows from Smith Street into the canal and location of proposed fencing to keep the public out of the canal area.

As discussed at the meeting the model will be revised to include the small length of wall to the east of the Mungo Scott adjacent to the light rail corridor which was not included in the modelling undertaken to date. It is anticipated that the revised modelling and associated analysis will be completed in the coming days. This finalised information will then be provided to SWC for your information and review.

Should you wish to discuss any aspect of the information provided, please do not hesitate to contact me on (02) 9380 9911 or by email at sbarwick@sjb.com.au.

Yours sincerely



Scott Barwick
Associate Director

Matthew Lewis
Acting Manager – Stormwater
Asset Management division
Sydney Water Corporation
PO Box 399
Parramatta NSW 212

2 November 2012

**Re: Mixed Use development of the former Allied Mills site, 2-32 Smith Street, Summer Hill
(MP10_0155 and MP10_0180)**

Dear Matthew,

I refer to our meeting of 17 October 2012 and follow up correspondence of 18 October 2012 where it was undertaken to provide to Sydney Water Corporation (SWC) updated 2D modelling of the surrounds of the Summer Hill flour mill site. This was in particular to ensure that the proposed defensive bund wall adjacent to the Mungo Scott Building was included in the modelling.

This work has now been completed and copies are attached for your reference. The modelling provides the basis for the Project Application that is currently being finalised regarding heights of habitable floor levels and provision of access through the site avoiding high flood hazard areas and evacuation paths. Confirmation that the modelling addresses SWC issues and forms an appropriate basis to proceed with the future development of the site is requested.

Should you wish to discuss any aspect of the information provided, please do not hesitate to contact me on (02) 9380 9911 or by email at sbarwick@sjb.com.au.

Yours sincerely



Scott Barwick
Associate Director

Attachments – WMA modelling results

FIGURE 5

100Y ARI DESIGN FLOOD EVENT
DEV MITIGATION CASE - PEAK DEPTHS AND CONTOURS

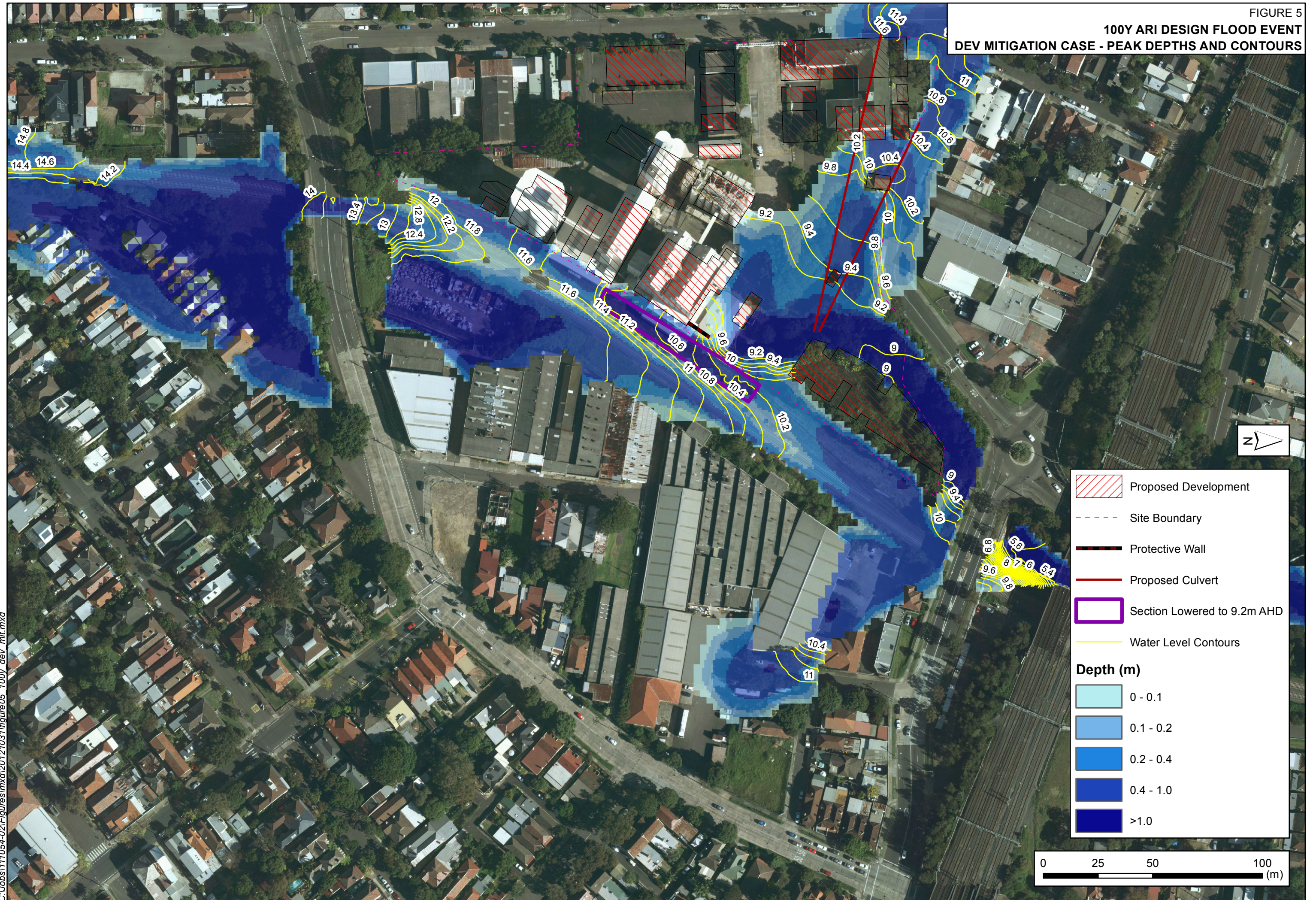


FIGURE 8
WATER LEVEL PROFILES

