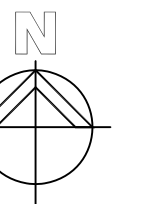
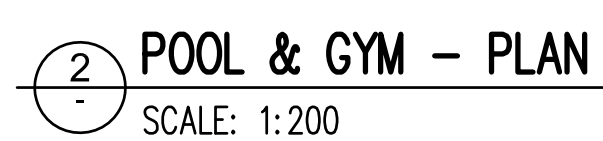




1. HEIGHT & HEAD HEIGHT OF WINDOWS IN EAST ELEVATION REDUCED;
2. HEIGHT OF WINDOW BAYS IN THE SOUTH ELEVATION INCREASED;
3. KIDS/ PLUNGE POOL SHAPE REVISED;
4. LOCATION OF SPA REVISED;
5. SIZE OF SAUNA ROOM REDUCED;
6. PLANT AREA ADDED TO ROOF;
7. ENTRY DOOR GLAZING IN NORTH & WEST ELEVATIONS REVISED;
8. EXTERNAL COLUMN ADDED TO SOUTH WEST CORNER ENTRY; AND
9. SKYLIGHT ADDED OVER POOL.



NOTE: CHILCARE CENTRE PLANS & ELEVATIONS
TO BE SUBJECT TO A SEPERATE D.A.



CHILDCARE-POOL PLANS & ELEVS
SCALE 1:200

NOTE:

THIS DRAWING IS THE EXCLUSIVE PROPERTY OF MERITON APARTMENTS PTY. LTD. AND THE REPRODUCTION OF ANY PART WITHOUT THE PRIOR WRITTEN CONSENT OF MERITON APARTMENTS PTY. LTD. IS A VIOLATION OF APPLICABLE LAWS. IN NO EVENT SHALL MERITON APARTMENTS PTY. LTD. BE HELD LIABLE FOR SPECIAL, INCIDENTAL, OR CONSEQUENTIAL LIABILITY IN CONNECTION WITH THE USE OF THIS DIGITAL DATA ONCE RELEASED FROM THE MERITON APARTMENTS PTY. LTD. OFFICES.

THIS DRAWING IS TO BE READ AND UNDERSTOOD IN CONJUNCTION WITH THE STRUCTURAL, MECHANICAL, ELECTRICAL AND / OR ANY OTHER CONSULTANT'S DOCUMENTATION AS MAY BE APPLICABLE TO THE PROJECT PRIOR TO THE START OF ANY WORKS AND FOR ITS DURATION.

PROJECT:
PROPOSED RESIDENTIAL DEVELOPMENT
NEW RESIDENTIAL DEVELOPMENT
14-18 BOONDAH ROAD
WARRIEWWOOD, NSW 2102

DRAWING TITLE:

CHILDCARE-POOL PLANS & ELEVS

PROJECT No: 697	DATE: 6/20/2012	DRAWING No: DA30	REV: E
DRAWN BY: TWJ	SCALE: AS SHOWN		
CAD FILE: F:\Projects\3131 Meriton - 14-18 Boondah Rd, Warriewood\DRAWINGS\Pool building\DA3			