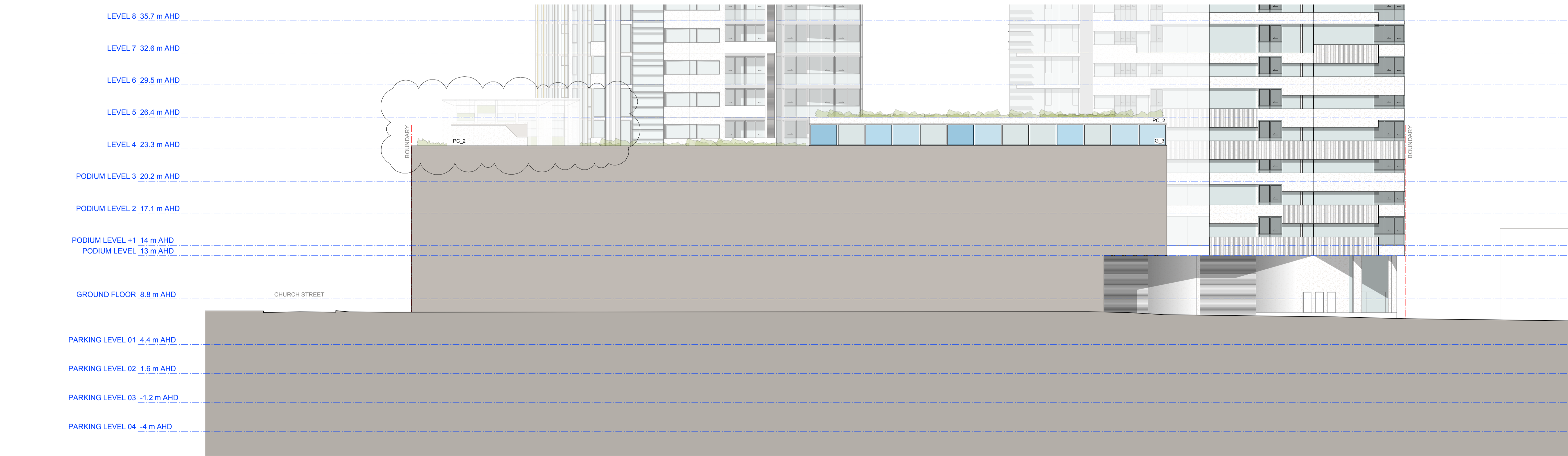


1 ELEVATION - EAST  
1:200 @A1



2 ELEVATION - SOUTH  
1:200 @A1

<b>GENERAL LEGEND</b> -ALL ARCHITECTURAL DRAWINGS AND DOCUMENTS TO BE READ IN CONJUNCTION WITH OTHER CONSULTANTS DRAWINGS AND REPORTS -FOR ALL EXTERNAL LEVELS REFER LANDSCAPE DRAWINGS. IF UNSURE CONFIRM DIMENSION WITH ARCHITECT PRIOR TO PROCEEDING -COPYRIGHT TONY CARO ARCHITECTURE -DIGITAL FILES ARE ISSUED FOR INFORMATION ONLY. CHANGES MUST NOT BE MADE TO DOCUMENTS WITHOUT ARCHITECTS CONSENT		<b>LEGEND - EXTERNAL FINISHES</b> AVB ALUMINIUM VERTICAL BLADE - VARYING DEPTHS (350, 450, 600mm) ALS ALUMINIUM SLIDING SCREENS ALV ALUMINIUM LOUVRE VENTS IN 'DARK BRONZE' BLG BALUSTRADE - GLASS BLM BALUSTRADE - METAL G_1 GLAZING TYPE 1 - CLEAR G_2 GLAZING TYPE 2 - TRANSLUCENT GLASS. COLOUR TBA G_3 GLAZING TYPE 3 - OPAQUE FILM APPLIED. COLOUR TBA		PC_1 PRECAST CONCRETE SPANDREL PANELS WITH PENETRATING PAINT FINISH OR SIMILAR IN 'NATURAL WHITE' PC_2 SMOOTH PRECAST CONCRETE WITH PAINTED FINISH (NATURAL WHITE) OR SIMILAR PC_3 SMOOTH PRECAST CONCRETE WITH PAINTED FINISH (GREY PEBBLE) OR SIMILAR PC_4 PRECAST CONCRETE WITH VERTICAL TEXTURE AND PENETRATING PAINT FINISH OR SIMILAR IN 'GREY PEBBLE' PFS PERFORATED METAL SCREEN		SSC SAW-CUT SANDSTONE CLADDING SPF STEEL PORTAL FRAME WITH MICACEOUS PAINT FINISH AHB ALUMINIUM HORIZONTAL BLADES IN 'DARK BRONZE'		<b>KEY CONSULTANT INFO</b> <b>LANDSCAPE</b> GUY STURT & ASSOC GUY STURT 9211 3744 guy@sturtassociates.com.au <b>STRUCTURAL</b> MERITON GEOFF 9211 3744 guy@sturtassociates.com.au <b>HYDRAULIC</b> TBA TBA TBA		<b>KEY CONSULTANT INFO</b> <b>BASIX</b> EFFICIENT LIVING TRACEY COOLE 9948 0332 tracey@efficientliving.com.au <b>SOLAR ACCESS</b> HEGGIES NEHAD AL-KHALIDY 9427 8100 nehad.al-khalidy@heggies.com.au <b>TRAFFIC</b> TTPA ROSS NETTLE 0416 189 656 rtpa@tppa.com.au		<b>GENERAL NOTES</b> DO NOT SCALE OFF THIS DRAWING. USE FIGURED DIMENSIONS ONLY. VERIFY ALL DIMENSIONS ON SITE AND RESOLVE ANY DISCREPANCIES BEFORE PROCEEDING. COPYRIGHT OF THIS DRAWING AND THE DESIGNS EXECUTED REMAIN THE PROPERTY OF TONY CARO ARCHITECTURE. BUILDER TO EXAMINE SITE AND VERIFY SITE CONDITIONS PRIOR TO COMMENCING WORK. BUILDER TO CONFIRM BUILDING SETOUT PRIOR TO COMMENCING WORK. ALL ARCHITECTURAL DRAWINGS TO BE READ IN CONJUNCTION WITH OTHER ARCHITECTURAL DETAILS, SCHEDULES AND SPECIFICATIONS. ALL ARCHITECTURAL DRAWINGS AND DOCUMENTS TO BE READ IN CONJUNCTION WITH OTHER CONSULTANTS		<b>GENERAL NOTES</b> DRAWINGS AND SPECIFICATIONS. BUILDER TO ALLOW FOR DEFLECTION TO ALL SLABS AS REQUIRED TO STRUCTURAL ENGINEERS SPECIFICATION. CAD DOCUMENTS ARE ISSUED FOR INFORMATION ONLY. CHANGES ARE NOT TO BE MADE TO ANY DOCUMENTATION WITHOUT THE ARCHITECTS WRITTEN APPROVAL. TCA TAKES NO RESPONSIBILITY FOR THE ELECTRONIC TRANSMISSION. DIMENSIONS OR ACCURACY OF THESE DRAWINGS. CEILING LEVEL AT NOMINATED DISTANCE FROM FINISHED FLOOR LEVEL. FOR ALL EXTERNAL LEVELS REFER TO LANDSCAPE ARCHITECTS DRAWINGS.		<b>KEY PLAN / GENERAL INFO</b>  N REFERENCE SCALE 1:200 0 2 4 6 8 10		<b>PROJECT</b> RIVERFRONT APARTMENTS 330 CHURCH STREET PARRAMATTA NSW <b>DRAWING NAME</b> ELEVATIONS - PODIUM		<b>SCALE</b> 1:200 <b>PAGE SIZE</b> A1 <b>STATUS</b> A Date JF 17/5/13 8		<b>A351</b> 100% ELEVATIONS 03.wpd	
--	--	--	--	--	--	--	--	--	--	---	--	---	--	--	--	--	--	--	--	---	--	---------------------------------------	--