



### LEGEND

	PROPOSED TREES		SAFETY BALUSTRADE
	GARDEN BED		CONTOURS
	NATIVE GRASSES		PAVED WALKING
	LAWN		GRAVEL
	SPILLOVER PLANTING: <i>Carpobrotus glaucescens</i> (Pig Face)		PRIVATE COURTYARD PAVER
	CONCRETE RETAINING		CONCRETE SEAT
	PRIVATE COURTYARD GATE		TIMBER SEAT

### NOTES

1. *Carpobrotus glaucescens* to over hang building edge from maintenance access only planting zones.
2. Earth mounded to 1000mm soil depth to raised pool edge to provide additional tree planting depth.
3. Densely planted lush garden beds. Soil to 600mm depth
4. Specimen plantings located in additional soil mounding to terminate site lines and mitigate cross site wind influence.
5. Edge experience view enhanced through steel frame building facade as seen from pedestrian walkway.
6. Glass balustrade to 1200mm tall set back from building edge and planted with mixed dense native grasses 700mm tall.
7. Lawn access and passive recreational seating to perimeter path and view to river areas.
8. South facing concrete formed sky light slots to units below are buffered from pedestrian access on south side by garden planting and utilised on north side as timber top seating benches.
9. Main open lawn sun areas.
10. Lawn mound seating over looking central areas and providing additional soil depth for western sun shade tree planting.
11. Lawn access and passive recreational seating
12. Concrete unit paving to perimeter path adjoining garden bed with additional mounding up to private courtyard outer wall.
13. Semi sheltered outdoor social seating.
14. Private courtyards

### CONCEPT PLAN

### PRECEDENT IMAGES



MOUNDED LAWN



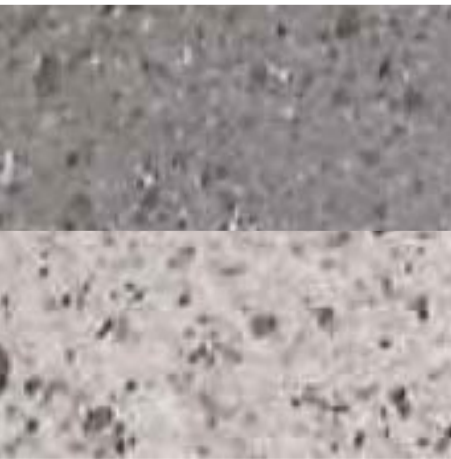
TIMBER SEAT



CUSTOM CONCRETE SEATING



YELLOW GLAZED BRICK



PAVING CONTRAST



ROCKS



NATIVE GRASS



ROBUST NATIVE PLANTING



NATIVE PLANTING



CLIENT: MERITON APARTMENTS

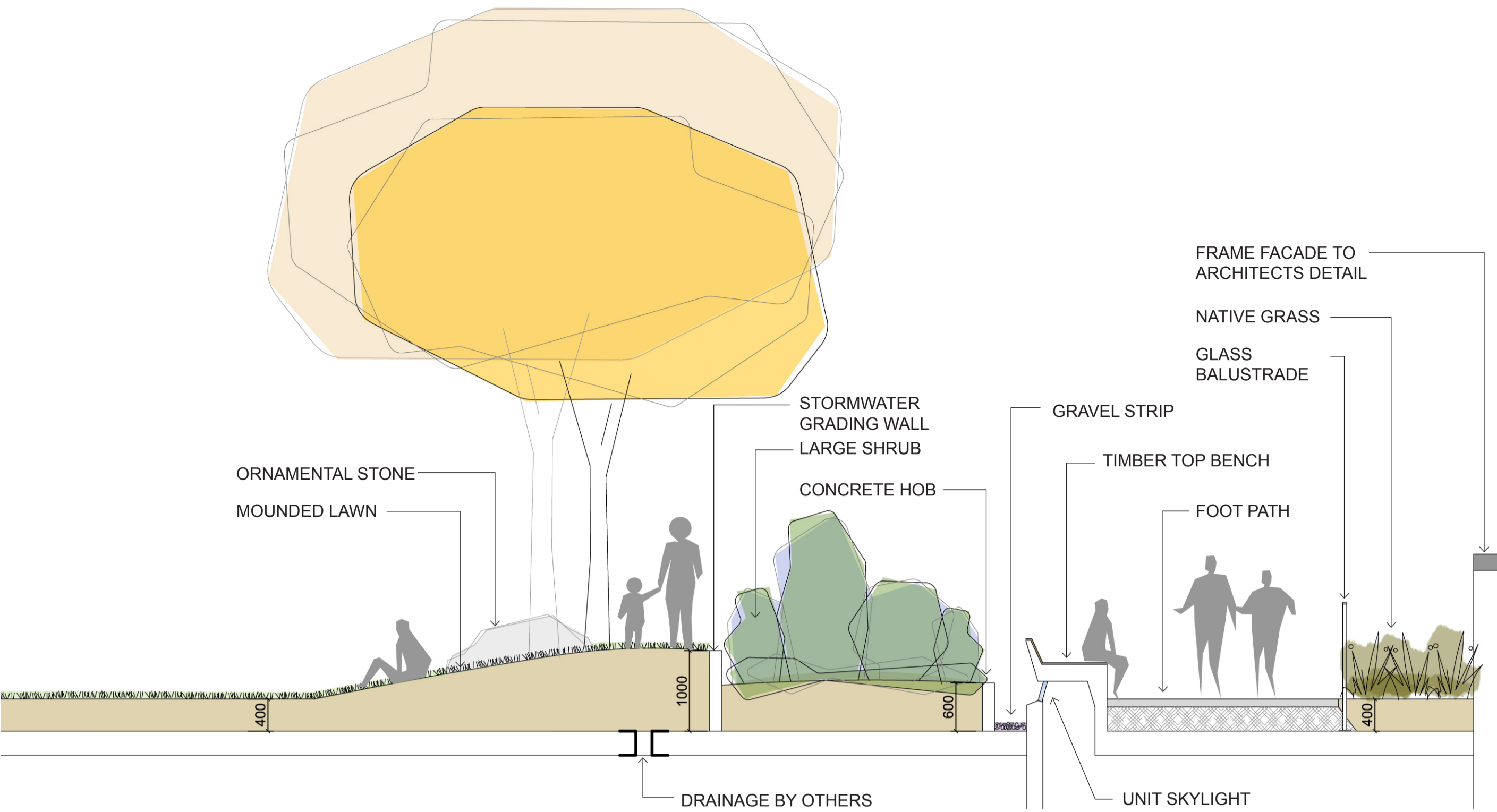
**330 CHURCH STREET, PARRAMATTA**  
**LANDSCAPE PLAN**  
**DEVELOPMENT APPLICATION**

**STURT ASSOCIATES**  
landscape architecture, urban design & environmental design

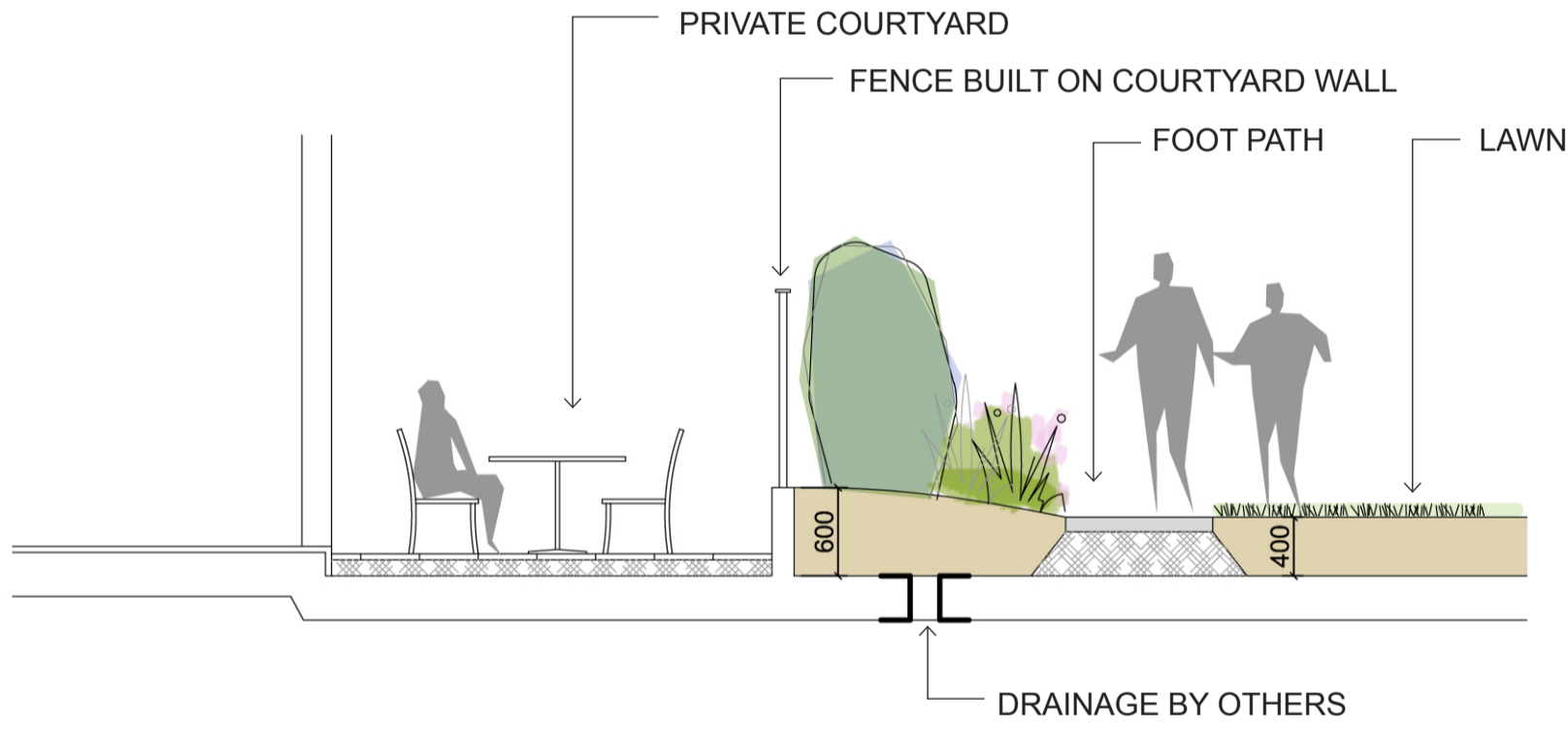
SUITE 01, 330 WATTLE STREET  
ULTIMO NSW 2007  
PH: (02) 9211 5744 FX: (02) 9211 9449

DATE:  
DRAWING:  
SCALE:

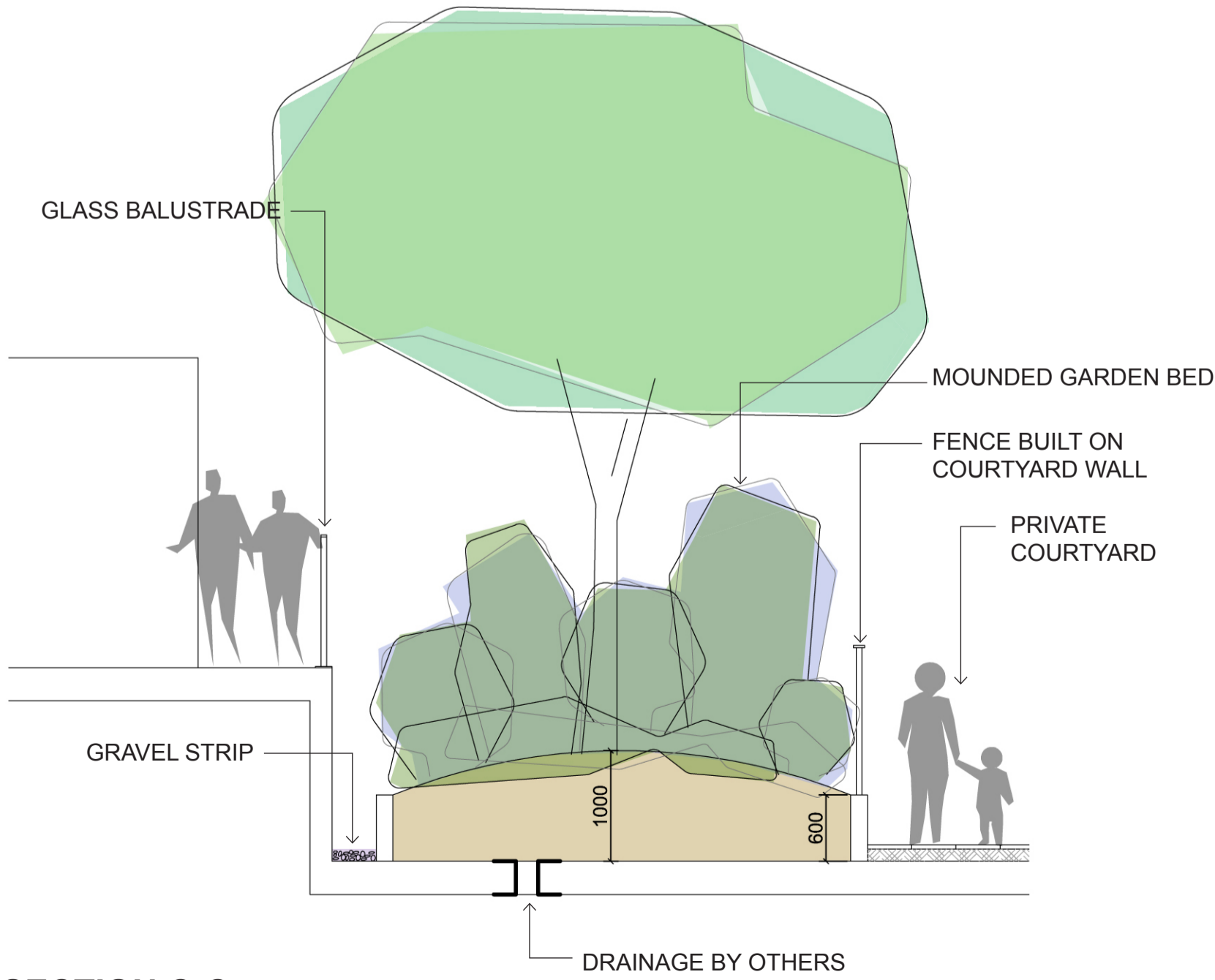
11 JUNE 2013  
DA-1311-01 B  
1:200@A1



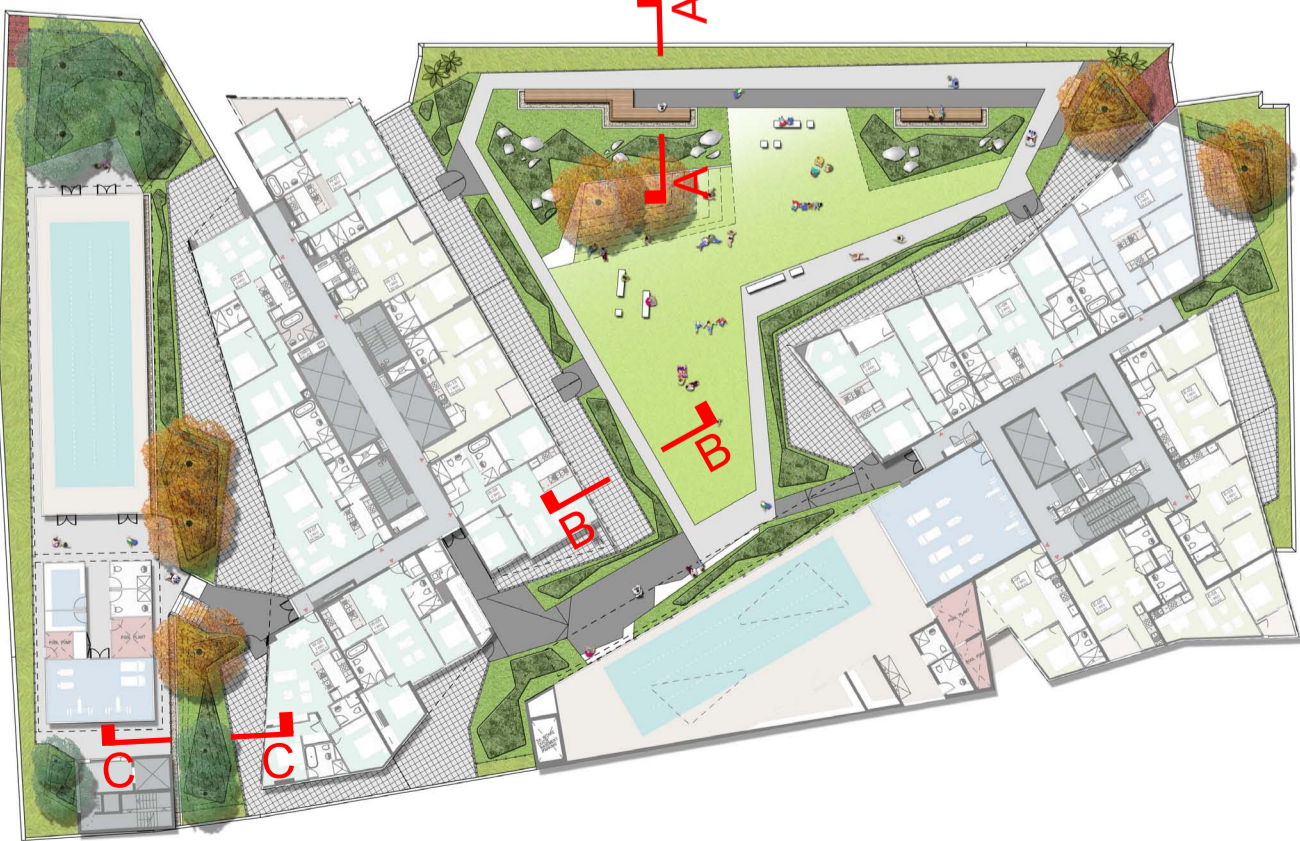
SECTION A-A



SECTION B-B



SECTION C-C



KEY PLAN

SELECTED PLANT IMAGES



*Acer palmatum*



*Plumeria acutifolia*



*Cordyline 'Rubra'*



*Alcantarea imperialis*



*Strelitzia reginae*



*Agave americana 'Variegata'*



*Asplenium nidus*



*Blechnum 'Silver Lady'*



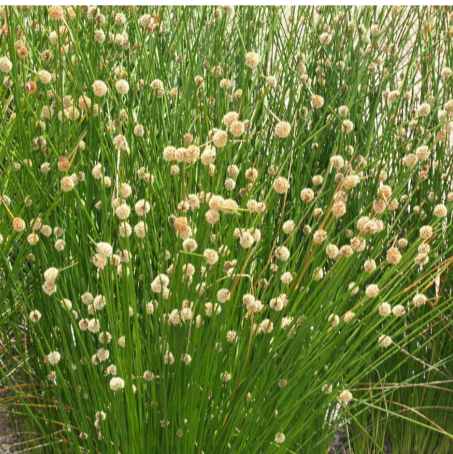
*Zamia Furfuracea*



*Poa labillardieri*



*Lomandra 'Tanika'*



*Isolepis nodosa*



*Juncus usitatus*



*Pennisetum alopecuroides 'Nafay'*



*Carpobrotus glancescens*

PLANT SCHEDULE

BOTANICAL NAME	COMMON NAME	MATURE HxW	POT SIZE	SPACING
Trees and Palms				
<i>Acer palmatum</i>	Japanese Maple	8 x 5m	75L	A.S.
<i>Cupaniopsis anarcardioides</i>	Tuckeroo	10 x 5m	75L	A.S.
<i>Plumeria acutifolia</i>	Frangipani	8 x 6m	100L	A.S.
<i>Waterhousia floribunda</i>	Weeping Lillypilly	5 x 3m	100L	A.S.
Shrubs and Groundcovers				
<i>Agave americana 'Variegata'</i>	Century Plant	2.5 x 2m	300mm	A.S.
<i>Alcantarea imperialis</i>	Giant Bromeliad	2 x 1.5m	200mm	0.8m
<i>Anemone hupehensis</i>	Japanese Wind Flower	1.5 x 1.5m	200mm	0.8m
<i>Ardisia crenata</i>	Coralberry	2 x 2m	200mm	1m
<i>Asplenium nidus</i>	Bird Nest Fern	1.5 x 1.5m	200mm	0.6m
<i>Blechnum 'Silver Lady'</i>	Silver Lady Blechnum	1.2 x 1m	200mm	0.6m
<i>Camellia sasanqua</i>	Sasanqua Camellia	3 x 1.5m	300mm	0.8m
<i>Camellia sasanqua 'White Dove'</i>	White Dove Sasanqua	1.5 x 1.5m	200mm	0.8m
<i>Carpobrotus glancescens</i>	Pig Face	0.2 x 2m	150mm	0.6m
<i>Cordyline fruticosa</i>	Ti Plant	2 x 1.5m	200mm	0.6m
<i>Cordyline 'Rubra'</i>	Red Leaf Cordyline	2 x 1.5m	200mm	0.6m
<i>Cycas revoluta</i>	Cycad	2.5 x 2.5m	300mm	1m
<i>Doryanthes excelsa</i>	Gymea Lily	2 x 2m	300mm	1m
<i>Isolepis nodosa</i>	Knobby Club Rush	0.8 x 0.6m	150mm	4/m2
<i>Juncus usitatus</i>	Tussock Rush	0.8 x 0.6m	150mm	4/m2
<i>Lomandra 'Tanika'</i>	Lomandra Tanika	0.6 x 0.6m	150mm	6/m2
<i>Strelitzia reginae</i>	Bird of Paradise	1.2 x 1m	300mm	A.S.
<i>Murraya paniculata</i>	Orange Jasmine	2 X 1.5m	200mm	0.8m
<i>Pennisetum alopecuroides 'Nafay'</i>	Fountain Grass	0.6 x 0.6m	150mm	4/m2
<i>Poa labillardieri</i>	Tussock Grass	0.9 x 0.9m	150mm	3/m2
<i>Rhapis excelsa</i>	Lady's Palm	4 X 3m	200mm	0.8m
<i>Themeda australis</i>	Kangaroo Grass	0.3 x 0.6m	150mm	4/m2

0 0.5 1 2.5 5m  
Scale 1:50@A1

CLIENT: MERITON APARTMENTS

**330 CHURCH STREET, PARRAMATTA**  
**LANDSCAPE SECTIONS AND**  
**PLANT SCHEDULE**

**STURT ASSOCIATES**  
landscape architecture, urban design & environmental design

SUITE 01, 330 WATTLE STREET  
ULTIMO NSW 2007  
PH: (02) 9211 5744 FX: (02) 9211 9440

DATE:  
DRAWING:  
SCALE:

11 JUNE 2013  
DA-1311-02 B  
1:50@A1