

01 PLAN - PARKING LEVEL 03  
1:200 @ A1

#### GENERAL LEGEND

-ALL ARCHITECTURAL DRAWINGS AND DOCUMENTS TO BE READ IN CONJUNCTION WITH OTHER CONSULTANTS DRAWINGS AND REPORTS FOR ALL EXTERNAL LEVELS REFER LANDSCAPE DRAWINGS.  
-USE FIGURE DIMENSIONS ONLY - DO NOT SCALE FROM DRAWINGS. IF UNSURE CONFIRM DIMENSION WITH ARCHITECT PRIOR TO PROCEEDING  
-COPYRIGHT TONY CARO ARCHITECTURE  
-DIGITAL FILES ARE ISSUED FOR INFORMATION ONLY. CHANGES MUST NOT BE MADE TO DOCUMENTS WITHOUT ARCHITECT'S CONSENT

#### LEGEND - EXTERNAL FINISHES

AVB ALUMINIUM VERTICAL BLADE - VARYING DEPTHS (300, 450, 600mm)  
ALS ALUMINIUM SLIDING SCREENS  
BLG BALUSTRADE - GLASS  
BLC BALUSTRADE - CONCRETE WITH PAINTED FINISH OR SIMILAR  
BLM BALUSTRADE - METAL  
G\_1 GLAZING TYPE 1 - CLEAR  
G\_2 GLAZING TYPE 2 - TRANSLUCENT GLASS, COLOUR TBA  
G\_3 GLAZING TYPE 3 - OPAQUE FILM APPLIED, COLOUR TBA

PC\_1 PRECAST CONCRETE SPANDREL PANELS WITH PENETRATING PAINT FINISH OR SIMILAR  
PC\_2 SMOOTH PRECAST CONCRETE WITH PAINTED FINISH (LIGHT) OR SIMILAR  
PC\_3 SMOOTH PRECAST CONCRETE WITH PAINTED FINISH (DARK) OR SIMILAR  
PFC PAINTED FC CLADDING  
PFS PERFORATED METAL SCREEN

DRAWING PREPARED FOR:  
**MERITON**  
MERITON APARTMENTS  
LEVEL 11, MERITON TOWER  
528 KENT STREET, SYDNEY  
BY:  
TONY CARO ARCHITECTURE PTY LTD  
LEVEL 1, 2 GLEN ST MILSONS POINT  
NSW 2061 SYDNEY AUSTRALIA  
T 99849100 F 99849133  
WWW.TONYCAROARCHITECTURE.COM.AU

ISSUE REGISTER		
7	2010/13	Amended s75w Application
6	17/05/13	Amended s75w Application
5	23/11/11	DA Issue - Additional Information
4	18/01/11	Issued for DA
3	28/01/11	Preliminary DA for review
2	28/01/11	TEST
1	28/01/11	PROGRESS MEETING
No	Date	Note

REVISION REGISTER		
JF		
JF		
JF		
JF		
SA		
SA		
SA		
By	No	Date Note

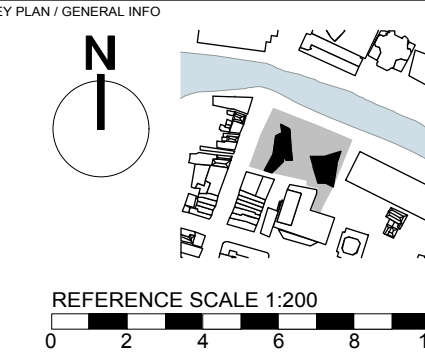
By

LANDSCAPE: GUY STURT & ASSOC  
GUY STURT  
9211 3744  
guy@sturtassociates.com.au  
STRUCTURAL: MERITON  
GEOFF  
9211 3744  
guy@sturtassociates.com.au  
HYDRAULIC: TBA  
TBA  
TBA

KEY CONSULTANT INFO  
BASIX: EFFICIENT LIVING  
TRACEY COOLESTRACEY COOL  
9946 0332  
tracy@efficientliving.com.au  
SOLAR ACCESS: HEGGIES  
NEHAD AL-KHALIDY  
9427 8100  
nehad.al-khalidy@heggies.com.au  
TRAFFIC: TTPA  
ROSS NETTLE  
0416 189 656  
tpea@tpea.com.au

GENERAL NOTES  
DO NOT SCALE OFF THIS DRAWING. USE FIGURED DIMENSIONS ONLY. VERIFY ALL DIMENSIONS ON SITE AND RESOLVE ANY DISCREPANCIES BEFORE PROCEEDING. COPYRIGHT OF THIS DRAWING AND THE DESIGNS EXECUTED REMAIN THE PROPERTY OF TONY CARO ARCHITECTURE. BUILDER TO EXAMINE SITE AND VERIFY SITE CONDITIONS PRIOR TO COMMENCING WORK. BUILDER TO CONFIRM BUILDING SETOUT PRIOR TO COMMENCING WORK. ALL ARCHITECTURAL DRAWINGS TO BE READ IN CONJUNCTION WITH OTHER ARCHITECTURAL DETAILS, SCHEDULES AND SPECIFICATIONS. ALL ARCHITECTURAL DRAWINGS AND DOCUMENTS TO BE READ IN CONJUNCTION WITH OTHER CONSULTANTS

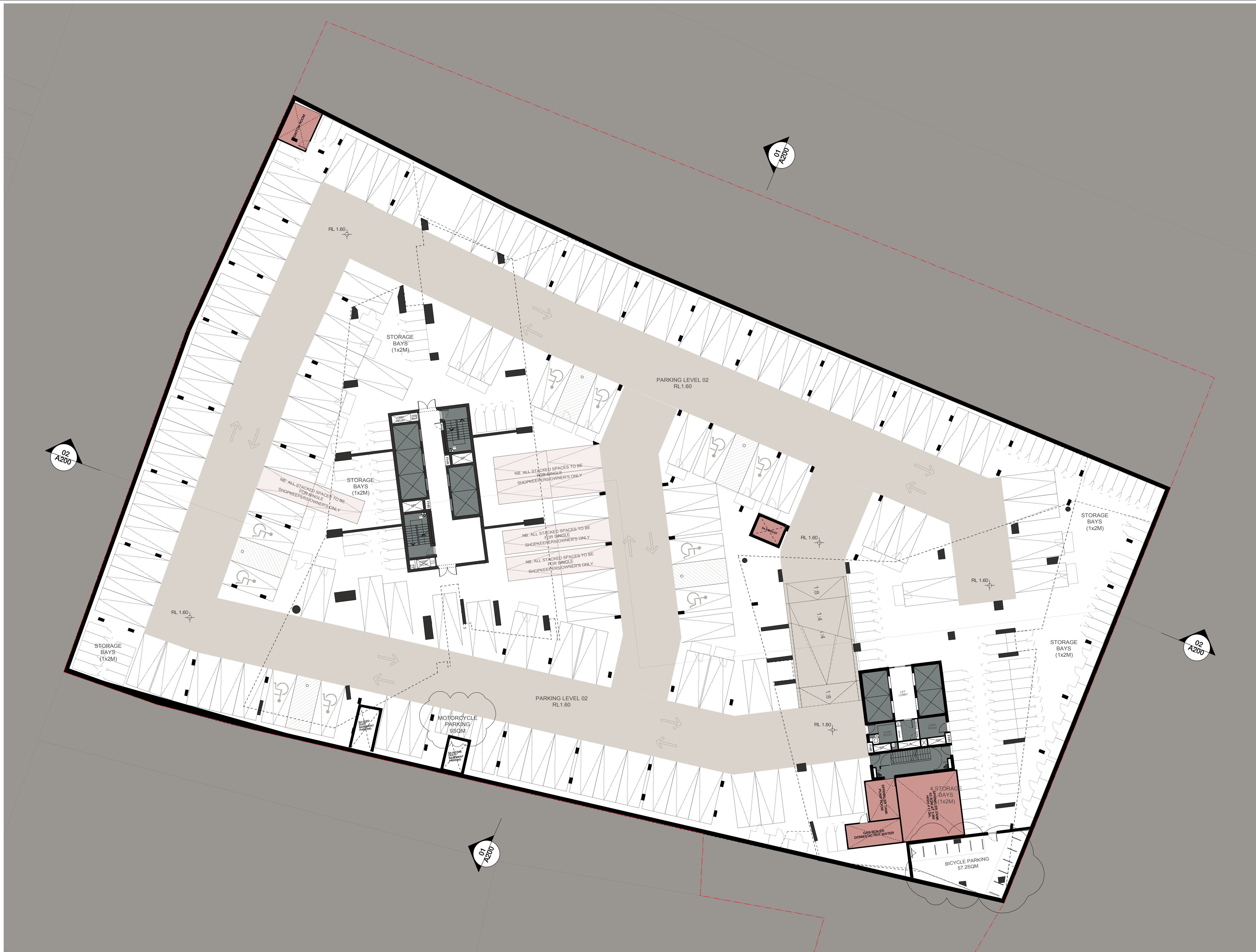
DRAWINGS AND SPECIFICATIONS. BUILDER TO ALLOW FOR DEFLECTION TO ALL SLABS AS REQUIRED TO STRUCTURAL ENGINEERS SPECIFICATION. CAD DOCUMENTS ARE ISSUED FOR INFORMATION ONLY. CHANGES ARE NOT TO BE MADE TO ANY DOCUMENTATION WITHOUT THE ARCHITECT'S WRITTEN APPROVAL. TCA TAKES NO RESPONSIBILITY FOR THE ELECTRONIC TRANSMISSION, DIMENSIONS OR ACCURACY OF THESE DRAWINGS. CEILING LEVEL AT NOMINATED DISTANCE FROM FINISHED FLOOR LEVEL. FOR ALL EXTERNAL LEVELS REFER TO LANDSCAPE ARCHITECT'S DRAWINGS.



PROJECT: RIVERFRONT APARTMENTS  
330 CHURCH STREET  
PARRAMATTA NSW  
DRAWING NAME: Plan\_Parking Level 03

SCALE	PAGE SIZE	STATUS
1:200	A1	PRELIMINARY
DWG DATE: MAR 2011	DRAWN BY: JF	APPR BY: TC
PLOT DATE: 10/5/13	REV	ISSUE: 7
DRAWING NUMBER	A097	





01 PLAN - PARKING LEVEL 02  
1:200 @ A1

#### GENERAL LEGEND

-ALL ARCHITECTURAL DRAWINGS AND DOCUMENTS TO BE READ IN CONJUNCTION WITH OTHER CONSULTANTS DRAWINGS AND REPORTS FOR ALL EXTERNAL LEVELS REFER LANDSCAPE DRAWINGS.  
-USE FIGURE DIMENSIONS ONLY - DO NOT SCALE FROM DRAWINGS. IF UNSURE CONFIRM DIMENSION WITH ARCHITECT PRIOR TO PROCEEDING  
-COPYRIGHT TONY CARO ARCHITECTURE  
-DIGITAL FILES ARE ISSUED FOR INFORMATION ONLY. CHANGES MUST NOT BE MADE TO DOCUMENTS WITHOUT ARCHITECTS CONSENT

#### LEGEND - EXTERNAL FINISHES

AV8 ALUMINIUM VERTICAL BLADE - VARYING DEPTHS (300, 450, 600mm)  
ALS ALUMINIUM SLIDING SCREENS  
BLG BALUSTRADE - GLASS  
BLC BALUSTRADE - CONCRETE WITH PAINTED FINISH OR SIMILAR  
BLM BALUSTRADE - METAL  
G\_1 GLAZING TYPE 1 - CLEAR  
G\_2 GLAZING TYPE 2 - TRANSLUCENT GLASS. COLOUR TBA  
G\_3 GLAZING TYPE 3 - OPAQUE FILM APPLIED. COLOUR TBA

PC\_1 PRECAST CONCRETE SPANDREL PANELS WITH PENETRATING PAINT FINISH OR SIMILAR  
PC\_2 SMOOTH PRECAST CONCRETE WITH PAINTED FINISH (LIGHT) OR SIMILAR  
PC\_3 SMOOTH PRECAST CONCRETE WITH PAINTED FINISH (DARK) OR SIMILAR  
PFC PAINTED FC CLADDING  
PFS PERFORATED METAL SCREEN

DRAWING PREPARED FOR:  
**MERITON**  
MERITON APARTMENTS  
LEVEL 11, MERITON TOWER  
528 KENT STREET, SYDNEY  
BY:  
TONY CARO ARCHITECTURE PTY LTD  
LEVEL 1, 2 GLEN ST MILSONS POINT  
NSW 2061 SYDNEY AUSTRALIA  
T 99849100 F 99849133  
WWW.TONYCAROARCHITECTURE.COM.AU

ISSUE REGISTER			REVISION REGISTER		
7	2010/13	Amended s75w Application	JF		
6	17/05/13	Amended s75w Application	JF		
5	23/11/11	DA Issue - Additional Information	JF		
4	18/01/11	Issued for DA	JF		
3	28/01/11	Preliminary DA for review	JF		
2	28/01/11	TEST	SA		
1	28/01/11	PROGRESS MEETING	SA		
No Date Note			By No Date Note		

LEGEND		
By	No	Date Note

KEY CONSULTANT INFO		
LANDSCAPE	GUY STURT & ASSOC GUY STURT 9211 3744 guy@sturtassociates.com.au	
STRUCTURAL	MERITON GEOFF 9211 3744 guy@sturtassociates.com.au	
HYDRAULIC	TBA TBA TBA	

KEY CONSULTANT INFO		
BASIX	EFFICIENT LIVING TRACEY COOLESTRACEY COOL 9946 0332 tracy@efficientliving.com.au	
SOLAR ACCESS	HEGGIES NEHAD AL-KHALIDY 9427 8100 nehad.al-khalidy@heggies.com.au	
TRAFFIC	TTPA ROSS NETTLE 0416 189 656 ttpa@ttpa.com.au	

#### BICYCLE PARKING

LEVEL	NO. PROVIDED
PODIUM LEVEL 3	Provided in Storage Cages - 22
PODIUM LEVEL 2	Provided in Storage Cages - 33
PODIUM LEVEL 1	Provided in Storage Cages - 33
PARKING LEVEL 1	48 + 34 in Cages
PARKING LEVEL 2	24 + 161 in Cages
PARKING LEVEL 3	Provided in Storage Cages - 161
PARKING LEVEL 4	Provided in Storage Cages - 161
TOTAL	653

#### STORAGE SCHEDULE

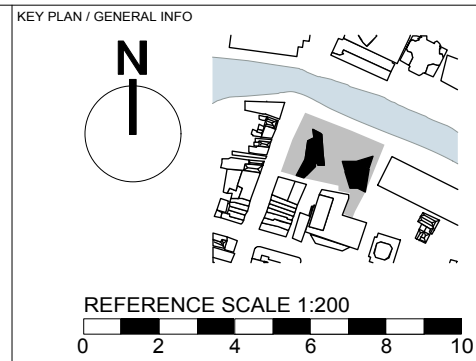
LEVEL	STORAGE NO.	STORAGE (m3)
PODIUM LEVEL 3	22	110
PODIUM LEVEL 2	33	165
PODIUM LEVEL 1	33	165
PARKING LEVEL 1	34	170
PARKING LEVEL 2	161	805
PARKING LEVEL 3	161	805
PARKING LEVEL 4	161	805
TOTAL	605	3025

#### PARKING SCHEDULE

LEVEL	RESIDENT PARKING	ACCESSIBLE PARKING	RETAIL/ VISITORS PARKING	TOTAL
PODIUM LEVEL 3	71	2	5	78
PODIUM LEVEL 2	68	4	5	77
PODIUM LEVEL 1	68	4	5	77
PARKING LEVEL 1	0	10	103	113
PARKING LEVEL 2	61	10	50	121
PARKING LEVEL 3	104	10	6	120
PARKING LEVEL 4	107	10	6	123
TOTAL	479	50	180	709

DO NOT SCALE OFF THIS DRAWING. USE FIGURED DIMENSIONS ONLY. VERIFY ALL DIMENSIONS ON SITE AND RESOLVE ANY DISCREPANCIES BEFORE PROCEEDING. COPYRIGHT OF THIS DRAWING AND THE DESIGNS EXECUTED REMAIN THE PROPERTY OF TONY CARO ARCHITECTURE. BUILDER TO EXAMINE SITE AND VERIFY SITE CONDITIONS PRIOR TO COMMENCING WORK. BUILDER TO CONFIRM BUILDING SETOUT PRIOR TO COMMENCING WORK. ALL ARCHITECTURAL DRAWINGS TO BE READ IN CONJUNCTION WITH OTHER ARCHITECTURAL DETAILS, SCHEDULES AND SPECIFICATIONS. ALL ARCHITECTURAL DRAWINGS AND DOCUMENTS TO BE READ IN CONJUNCTION WITH OTHER CONSULTANTS

DRAWINGS AND SPECIFICATIONS. BUILDER TO ALLOW FOR DEFLECTION TO ALL SLABS AS REQUIRED TO STRUCTURAL ENGINEERS SPECIFICATION. CAD DOCUMENTS ARE ISSUED FOR INFORMATION ONLY. CHANGES ARE NOT TO BE MADE TO ANY DOCUMENTATION WITHOUT THE ARCHITECTS WRITTEN APPROVAL. TCA TAKES NO RESPONSIBILITY FOR THE ELECTRONIC TRANSMISSION. DIMENSIONS OR ACCURACY OF THESE DRAWINGS. CEILING LEVEL AT NOMINATED DISTANCE FROM FINISHED FLOOR LEVEL. FOR ALL EXTERNAL LEVELS REFER TO LANDSCAPE ARCHITECTS DRAWINGS.



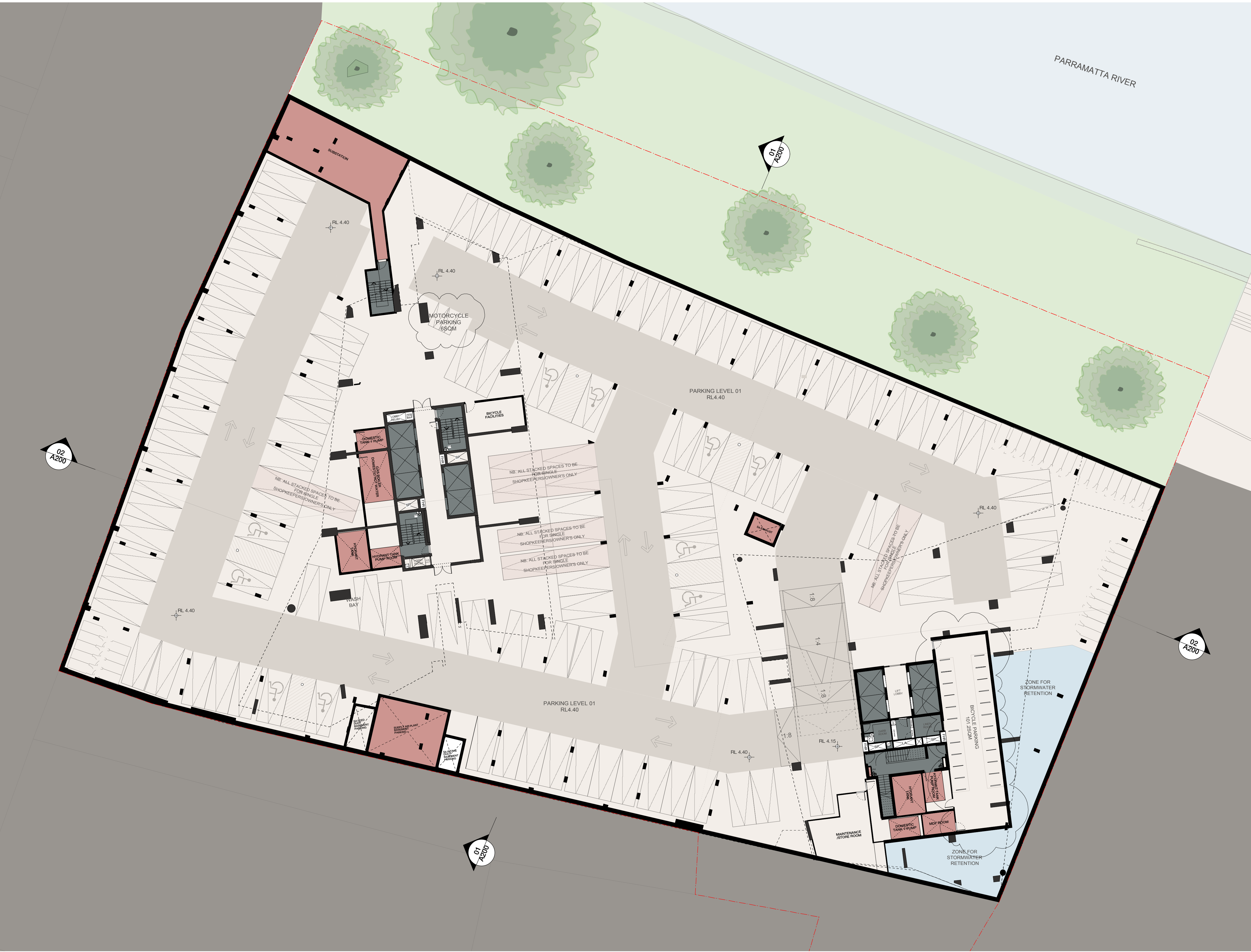
PROJECT  
**RIVERFRONT APARTMENTS**  
330 CHURCH STREET  
PARRAMATTA NSW

Plan\_Parking Level 02

SCALE 1:200  
DWG DATE MAR 2011  
PLOT DATE 10/5/13

PAGE SIZE A1  
DRAWN BY JF  
REV  
STATUS PRELIMINARY  
APPR BY TC  
ISSUE 7





01 PLAN - PARKING LEVEL 01  
1:200 @ A1

#### GENERAL LEGEND

-ALL ARCHITECTURAL DRAWINGS AND DOCUMENTS TO BE READ IN CONJUNCTION WITH OTHER CONSULTANTS DRAWINGS AND REPORTS FOR ALL EXTERNAL LEVELS REFER LANDSCAPE DRAWINGS.  
-USE FIGURE DIMENSIONS ONLY - DO NOT SCALE FROM DRAWINGS. IF UNSURE CONFIRM DIMENSION WITH ARCHITECT PRIOR TO PROCEEDING  
-COPYRIGHT TONY CARO ARCHITECTURE  
-DIGITAL FILES ARE ISSUED FOR INFORMATION ONLY. CHANGES MUST NOT BE MADE TO DOCUMENTS WITHOUT ARCHITECT'S CONSENT

#### LEGEND - EXTERNAL FINISHES

AV8 ALUMINIUM VERTICAL BLADE - VARYING DEPTHS (300, 450, 600mm)  
ALS ALUMINIUM SLIDING SCREENS  
BLG BALUSTRADE - GLASS  
BLC BALUSTRADE - CONCRETE WITH PAINTED FINISH OR SIMILAR  
BLM BALUSTRADE - METAL  
G\_1 GLAZING TYPE 1 - CLEAR  
G\_2 GLAZING TYPE 2 - TRANSLUCENT GLASS. COLOUR TBA  
G\_3 GLAZING TYPE 3 - OPAQUE FILM APPLIED. COLOUR TBA

PC\_1 PRECAST CONCRETE SPANDREL PANELS WITH PENETRATING PAINT FINISH OR SIMILAR  
PC\_2 SMOOTH PRECAST CONCRETE WITH PAINTED FINISH (LIGHT) OR SIMILAR  
PC\_3 SMOOTH PRECAST CONCRETE WITH PAINTED FINISH (DARK) OR SIMILAR  
PFC PAINTED FC CLADDING  
PFS PERFORATED METAL SCREEN

DRAWING PREPARED FOR:  
**MERITON**  
MERITON APARTMENTS  
LEVEL 11, MERITON TOWER  
528 KENT STREET, SYDNEY  
BY:  
TONY CARO ARCHITECTURE PTY LTD  
LEVEL 1, 2 GLEN ST MILSONS POINT  
NSW 2061 SYDNEY AUSTRALIA  
T 99949100 F 99949133  
WWW.TONYCAROARCHITECTURE.COM.AU

ISSUE REGISTER	
No	Date Note
9	20/6/13 Amended s75w Application JF
8	17/6/13 Amended s75w Application JF
7	20/6/12 DA Issue - Additional Information JF
6	23/11/11 DA Issue - Additional Information JF
5	23/6/11 Issued for DA JF
4	18/6/11 Issued for DA JF
3	28/6/11 Preliminary DA for review JF
2	28/6/11 TEST SMA
1	28/6/11 PROGRESS MEETING SMA

REVISION REGISTER	
By	No Date Note

LEGEND	
By	

KEY CONSULTANT INFO	
LANDSCAPE	GUY STURT & ASSOC GUY STURT 9211 3744 guy@sturtassociates.com.au
STRUCTURAL	MERITON GEOFF 9211 3744 guy@sturtassociates.com.au
HYDRAULIC	TBA TBA TBA

#### BICYCLE PARKING

LEVEL	NO. PROVIDED
PODIUM LEVEL 3	Provided in Storage Cages - 22
PODIUM LEVEL 2	Provided in Storage Cages - 33
PODIUM LEVEL 1	Provided in Storage Cages - 33
PARKING LEVEL 1	48 + 34 in Cages
PARKING LEVEL 2	24 + 161 in Cages
PARKING LEVEL 3	Provided in Storage Cages - 161
PARKING LEVEL 4	Provided in Storage Cages - 161
TOTAL	653

KEY CONSULTANT INFO	
BASIX	EFFICIENT LIVING TRACEY COOLESTRACEY COOL 9949 0332 tracy@efficientliving.com.au
SOLAR ACCESS	HEGGIES NEHAD AL-KHALIDY 9427 8100 nehad.al-khalidy@heggies.com.au
TRAFFIC	TTPA ROSS NETTLE 0416 189 656 ttpa@ttpa.com.au

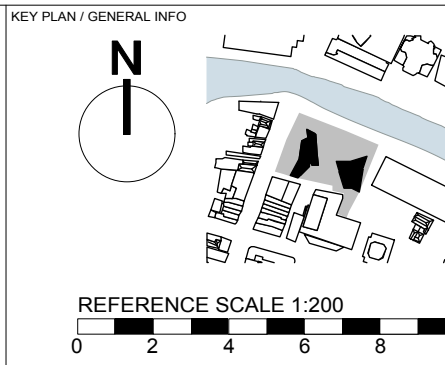
GENERAL NOTES  
DO NOT SCALE OFF THIS DRAWING. USE FIGURED DIMENSIONS ONLY. VERIFY ALL DIMENSIONS ON SITE AND RESOLVE ANY DISCREPANCIES BEFORE PROCEEDING. COPYRIGHT OF THIS DRAWING AND THE DESIGNS EXECUTED REMAIN THE PROPERTY OF TONY CARO ARCHITECTURE. BUILDER TO EXAMINE SITE AND VERIFY SITE CONDITIONS PRIOR TO COMMENCING WORK. BUILDER TO CONFIRM BUILDING SETOUT PRIOR TO COMMENCING WORK. ALL ARCHITECTURAL DRAWINGS TO BE READ IN CONJUNCTION WITH OTHER ARCHITECTURAL DETAILS, SCHEDULES AND SPECIFICATIONS. ALL ARCHITECTURAL DRAWINGS AND DOCUMENTS TO BE READ IN CONJUNCTION WITH OTHER CONSULTANTS

#### STORAGE SCHEDULE

LEVEL	STORAGE NO.	STORAGE (m3)
PODIUM LEVEL 3	22	110
PODIUM LEVEL 2	33	165
PODIUM LEVEL 1	33	165
PARKING LEVEL 1	34	170
PARKING LEVEL 2	161	805
PARKING LEVEL 3	161	805
PARKING LEVEL 4	161	805
TOTAL	605	3025

#### PARKING SCHEDULE

LEVEL	RESIDENT PARKING	ACCESSIBLE PARKING	RETAIL/ VISITORS PARKING	TOTAL
PODIUM LEVEL 3	71	2	5	78
PODIUM LEVEL 2	68	4	5	77
PODIUM LEVEL 1	68	4	5	77
PARKING LEVEL 1	0	10	103	113
PARKING LEVEL 2	61	10	50	121
PARKING LEVEL 3	104	10	6	120
PARKING LEVEL 4	107	10	6	123
TOTAL	479	50	180	709



PROJECT  
**RIVERFRONT APARTMENTS**  
330 CHURCH STREET  
PARRAMATTA NSW

DRAWING NAME  
**Plan\_Parking Level 01**

SCALE 1:200	PAGE SIZE A1	STATUS PRELIMINARY
DWG DATE MAR 2011	DRAWN BY JF	APPR BY TC
PLOT DATE 10/5/13	REV	ISSUE 9
DRAWING NUMBER		A099





NB. ALL RL'S SHOWN OUTSIDE  
BOUNDARY ARE EXISTING.  
REFER TO SURVEY FOR  
FURTHER LEVELS

NB. ALL RL'S SHOWN OUTSIDE  
BOUNDARY ARE EXISTING.  
REFER TO SURVEY FOR  
FURTHER LEVELS

WALL CONSTRUCTION TO  
ALLOW FOR FUTURE OPENINGS  
TO PROPOSED LANEWAY

# 01 PLAN - LEVEL 00 (RETAIL) 1:200 @ A1

## GENERAL LEGEND

-ALL ARCHITECTURAL DRAWINGS AND DOCUMENTS TO BE READ IN CONJUNCTION WITH OTHER CONSULTANTS DRAWINGS AND REPORTS  
-FOR ALL EXTERNAL LEVELS REFER LANDSCAPE DRAWINGS.  
-USE FIGURE DIMENSIONS ONLY - DO NOT SCALE FROM DRAWINGS. IF UNSURE, CONFIRM DIMENSION WITH ARCHITECT PRIOR TO PROCEEDING  
-COPYRIGHT TONY CARO ARCHITECTURE  
-DIGITAL FILES ARE ISSUED FOR INFORMATION ONLY. CHANGES MUST NOT BE MADE TO DOCUMENTS WITHOUT ARCHITECT'S CONSENT

## LEGEND - EXTERNAL FINISHES

AVB ALUMINIUM VERTICAL BLADE - VARYING DEPTHS (300, 450, 600mm)  
ALS ALUMINIUM SLIDING SCREENS  
BLC BALUSTRADE - GLASS  
BLC BALUSTRADE - CONCRETE WITH PAINTED FINISH OR SIMILAR  
BLM BALUSTRADE - METAL  
G\_1 GLAZING TYPE 1 - CLEAR  
G\_2 GLAZING TYPE 2 - TRANSLUCENT GLASS, COLOUR TBA  
G\_3 GLAZING TYPE 3 - OPAQUE FILM APPLIED, COLOUR TBA

PC\_1 PRECAST CONCRETE SPANDREL PANELS WITH PENETRATING PAINT FINISH OR SIMILAR  
PC\_2 SMOOTH PRECAST CONCRETE WITH PAINTED FINISH (LIGHT) OR SIMILAR  
PC\_3 SMOOTH PRECAST CONCRETE WITH PAINTED FINISH (DARK) OR SIMILAR  
PFC PAINTED FC CLADDING  
PFS PERFORATED METAL SCREEN

DRAWING PREPARED FOR:  
**MERITON**  
MERITON APARTMENTS  
LEVEL 11, MERITON TOWER  
528 KENT STREET, SYDNEY  
BY:  
TONY CARO ARCHITECTURE PTY LTD  
LEVEL 1, 2 GLEN ST MILSONS POINT  
NSW 2061 SYDNEY AUSTRALIA  
T 99649100 F 99649133  
WWW.TONYCAROARCHITECTURE.COM.AU

ISSUE REGISTER			REVISED BY	DATE	REASON
NO	DATE	NOTE			
12	17/01/13	Amended 5 Tsw Application	JF		
11	11/12/12	Consent Revision - Flood Refuge Star	JF		
10	3/10/12	DA Issue - Additional Information	JF		
9	20/01/12	DA Issue - Flood Level Change / Change Entry	JF		
8	2/10/12	DA Issue - Flood Level Change / Change Entry	JF		
7	14/12/11	DA Issue - Flood Level Changes	JF		
6	23/11/11	DA Issue - Additional Information	JF		
5	22/01/11	Issued for DA	JF		
4	18/01/11	Issued for DA	JF		
3	28/01/11	Preliminary DA for review	JF		

REVISION REGISTER			REVISED BY	DATE	REASON
NO	DATE	NOTE			
By	No	Date	Note		

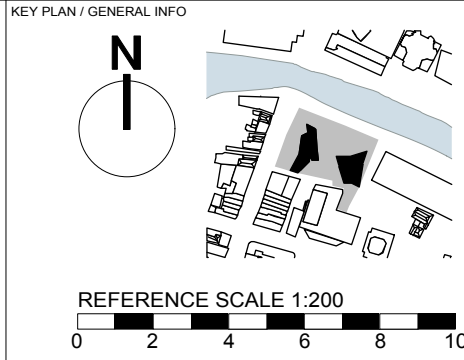
LEGEND			REVISED BY	DATE	REASON
NO	DATE	NOTE			
By	No	Date	Note		

KEY CONSULTANT INFO		
LANDSCAPE	GUY STURT & ASSOC GUY STURT 9211 3744 guy@sturtassociates.com.au	
STRUCTURAL	MERITON GEOFF 9211 3744 guy@sturtassociates.com.au	
HYDRAULIC	TBA TBA TBA	

KEY CONSULTANT INFO		
BASIX	EFFICIENT LIVING TRACEY COOLESTRACEY COOLES 9946 0332 tracy@efficientliving.com.au	
SOLAR ACCESS	HEGGIES NEHAD AL-KHALIDY 9427 8100 nehad.al-khalidy@heggies.com.au	
TRAFFIC	TTPA ROSS NETTLE 0416 189 656 rtppa@tppa.com.au	

GENERAL NOTES  
DO NOT SCALE OFF THIS DRAWING. USE FIGURED DIMENSIONS ONLY. VERIFY ALL DIMENSIONS ON SITE AND RESOLVE ANY DISCREPANCIES BEFORE PROCEEDING. COPYRIGHT OF THIS DRAWING AND THE DESIGNS EXECUTED REMAIN THE PROPERTY OF TONY CARO ARCHITECTURE. BUILDER TO EXAMINE SITE AND VERIFY SITE CONDITIONS PRIOR TO COMMENCING WORK. BUILDER TO CONFIRM BUILDING SETOUT PRIOR TO COMMENCING WORK. ALL ARCHITECTURAL DRAWINGS TO BE READ IN CONJUNCTION WITH OTHER ARCHITECTURAL DETAILS, SCHEDULES AND SPECIFICATIONS. ALL ARCHITECTURAL DRAWINGS AND DOCUMENTS TO BE READ IN CONJUNCTION WITH OTHER CONSULTANTS

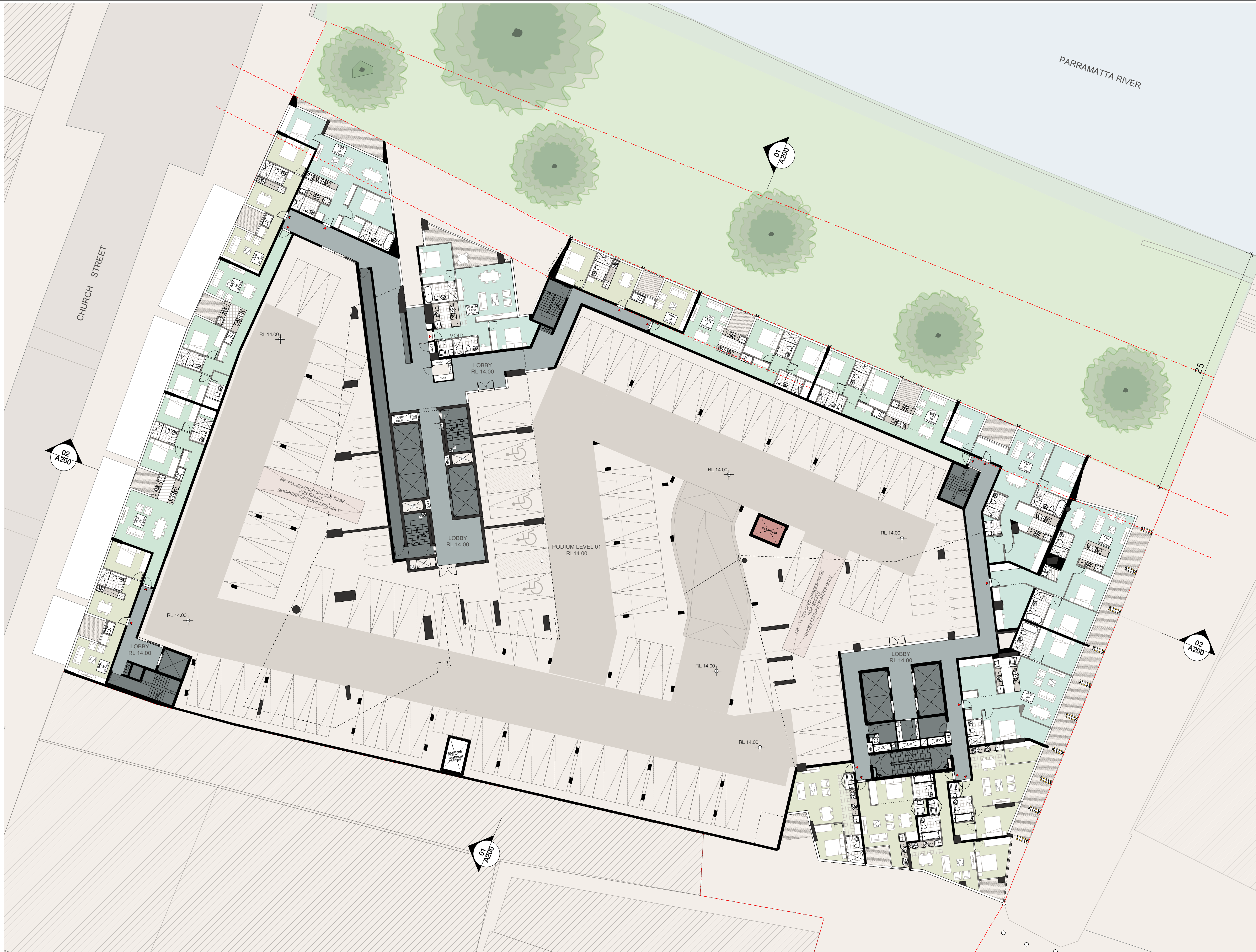
DRAWINGS AND SPECIFICATIONS. BUILDER TO ALLOW FOR DEFLECTION TO ALL SLABS AS REQUIRED TO STRUCTURAL ENGINEERS SPECIFICATION. CAD DOCUMENTS ARE ISSUED FOR INFORMATION ONLY. CHANGES ARE NOT TO BE MADE TO ANY DOCUMENTATION WITHOUT THE ARCHITECT'S WRITTEN APPROVAL. TCA TAKES NO RESPONSIBILITY FOR THE ELECTRONIC TRANSMISSION, DIMENSIONS OR ACCURACY OF THESE DRAWINGS. CEILING LEVEL AT NOMINATED DISTANCE FROM FINISHED FLOOR LEVEL. FOR ALL EXTERNAL LEVELS REFER TO LANDSCAPE ARCHITECT'S DRAWINGS.



PROJECT		
RIVERFRONT APARTMENTS 330 CHURCH STREET PARRAMATTA NSW		
DRAWING NAME		
Plan_Level 00 Retail		

SCALE	PAGE SIZE	STATUS
1:200	A1	PRELIMINARY
DWG DATE	DRAWN BY	APPR BY
MAR 2011	JF	TC
PLOT DATE	REV	ISSUE
14/5/13		12
DRAWING NUMBER		





01 PLAN - LEVEL 01 PODIUM  
1:200 @ A1

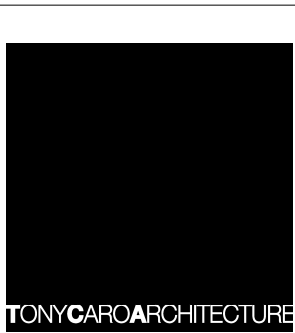
#### GENERAL LEGEND

-ALL ARCHITECTURAL DRAWINGS AND DOCUMENTS TO BE READ IN CONJUNCTION WITH OTHER CONSULTANTS DRAWINGS AND REPORTS FOR ALL EXTERNAL LEVELS REFER LANDSCAPE DRAWINGS.  
-USE FIGURE DIMENSIONS ONLY - DO NOT SCALE FROM DRAWINGS. IF UNSURE CONFIRM DIMENSION WITH ARCHITECT PRIOR TO PROCEEDING  
-COPYRIGHT TONY CARO ARCHITECTURE  
-DIGITAL FILES ARE ISSUED FOR INFORMATION ONLY. CHANGES MUST NOT BE MADE TO DOCUMENTS WITHOUT ARCHITECTS CONSENT

#### LEGEND - EXTERNAL FINISHES

AVB ALUMINIUM VERTICAL BLADE - VARYING DEPTHS (300, 450, 600mm)  
ALS ALUMINIUM SLIDING SCREENS  
BLG BALUSTRADE - GLASS  
BLC BALUSTRADE - CONCRETE WITH PAINTED FINISH OR SIMILAR  
BLM BALUSTRADE - METAL  
G\_1 GLAZING TYPE 1 - CLEAR  
G\_2 GLAZING TYPE 2 - TRANSLUCENT GLASS. COLOUR TBA  
G\_3 GLAZING TYPE 3 - OPAQUE FILM APPLIED. COLOUR TBA

PC\_1 PRECAST CONCRETE SPANDREL PANELS WITH PENETRATING PAINT FINISH OR SIMILAR  
PC\_2 SMOOTH PRECAST CONCRETE WITH PAINTED FINISH (LIGHT) OR SIMILAR  
PC\_3 SMOOTH PRECAST CONCRETE WITH PAINTED FINISH (DARK) OR SIMILAR  
PFC PAINTED FC CLADDING  
PFS PERFORATED METAL SCREEN



DRAWING PREPARED FOR:  
**MERITON**  
MERITON APARTMENTS  
LEVEL 11, MERITON TOWER  
528 KENT STREET, SYDNEY  
BY:  
TONY CARO ARCHITECTURE PTY LTD  
LEVEL 1, 2 GLEN ST MILSONS POINT  
NSW 2061 SYDNEY AUSTRALIA  
T 99849100 F 99849133  
WWW.TONYCAROARCHITECTURE.COM.AU

ISSUE REGISTER			
1	Issue	By	Date
	No	Date	Note

REVISION REGISTER			
1	By	No	Date
	By	No	Date

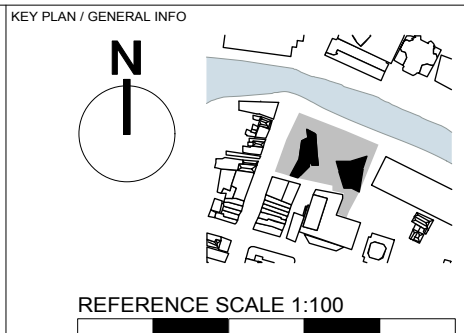
LEGEND
By

KEY CONSULTANT INFO	
LANDSCAPE:	GUY STURT & ASSOC GUY STURT 9211 3744 guy@sturtassociates.com.au
STRUCTURAL:	MERITON GEOFF 9211 3744 guy@sturtassociates.com.au
HYDRAULIC:	TBA TBA TBA

KEY CONSULTANT INFO	
BASIX:	EFFICIENT LIVING TRACEY COOLESTRACEY COOLES 9946 0332 tracy@efficientliving.com.au
SOLAR ACCESS:	HEGGIES NEHAD AL-KHALIDY 9427 8100 nehad.al-khalidy@heggies.com.au
TRAFFIC:	TTPA ROSS NETTLE 0416 189 656 ttpa@ttpa.com.au

GENERAL NOTES  
DO NOT SCALE OFF THIS DRAWING. USE FIGURED DIMENSIONS ONLY. VERIFY ALL DIMENSIONS ON SITE AND RESOLVE ANY DISCREPANCIES BEFORE PROCEEDING. COPYRIGHT OF THIS DRAWING AND THE DESIGNS EXECUTED REMAIN THE PROPERTY OF TONY CARO ARCHITECTURE. BUILDER TO EXAMINE SITE AND VERIFY SITE CONDITIONS PRIOR TO COMMENCING WORK. BUILDER TO CONFIRM BUILDING SETOUT PRIOR TO COMMENCING WORK. ALL ARCHITECTURAL DRAWINGS TO BE READ IN CONJUNCTION WITH OTHER ARCHITECTURAL DETAILS, SCHEDULES AND SPECIFICATIONS. ALL ARCHITECTURAL DRAWINGS AND DOCUMENTS TO BE READ IN CONJUNCTION WITH OTHER CONSULTANTS

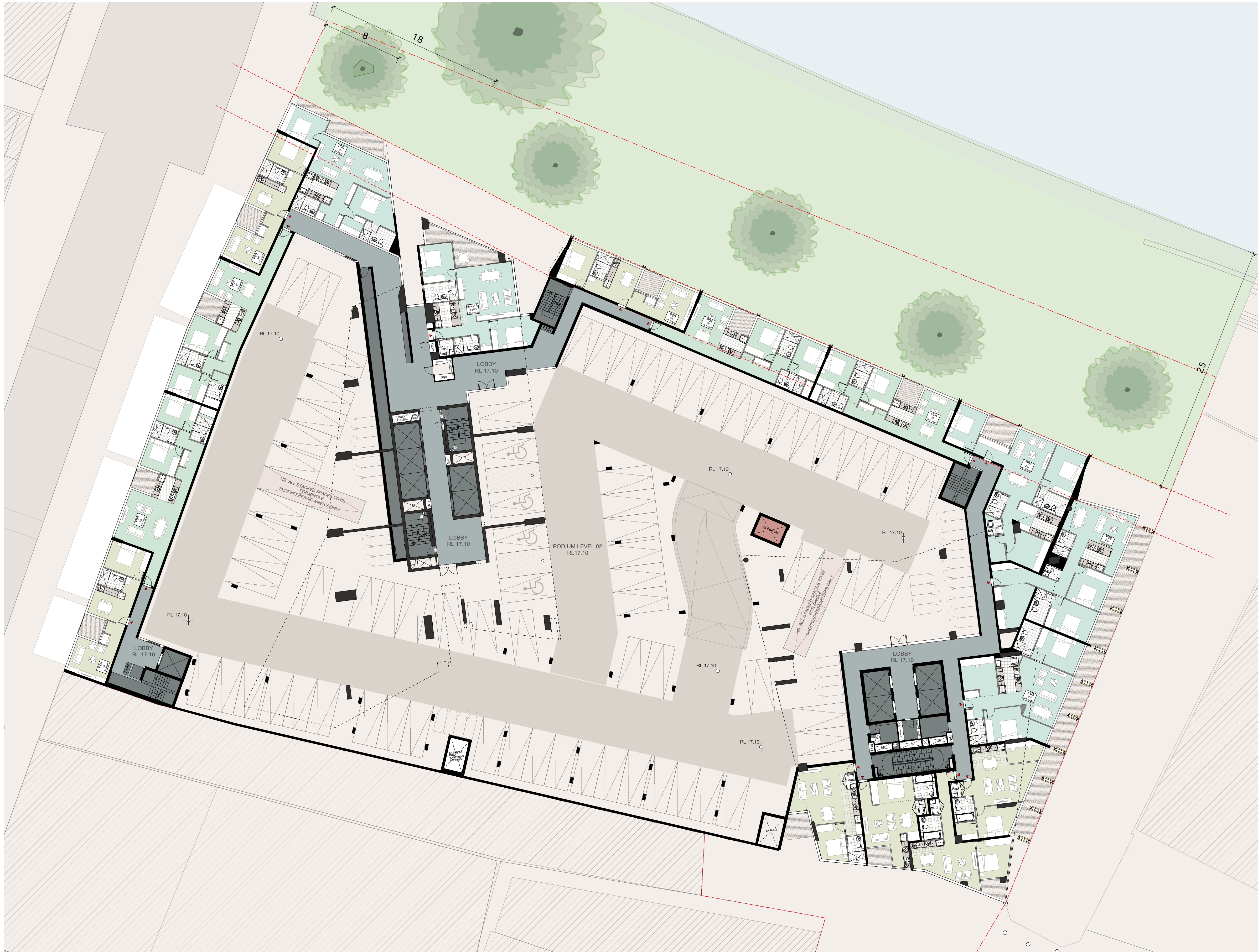
DRAWINGS AND SPECIFICATIONS. BUILDER TO ALLOW FOR DEFLECTION TO ALL SLABS AS REQUIRED TO STRUCTURAL ENGINEERS SPECIFICATION. CAD DOCUMENTS ARE ISSUED FOR INFORMATION ONLY. CHANGES ARE NOT TO BE MADE TO ANY DOCUMENTATION WITHOUT THE ARCHITECTS WRITTEN APPROVAL. TCA TAKES NO RESPONSIBILITY FOR THE ELECTRONIC TRANSMISSION, DIMENSIONS OR ACCURACY OF THESE DRAWINGS. CEILING LEVEL AT NOMINATED DISTANCE FROM FINISHED FLOOR LEVEL. FOR ALL EXTERNAL LEVELS REFER TO LANDSCAPE ARCHITECTS DRAWINGS.



PROJECT	
RIVERFRONT APARTMENTS 330 CHURCH STREET PARRAMATTA NSW	
DRAWING NAME	
Plan_Level 01 Podium	

SCALE	PAGE SIZE	STATUS
1:200	A1	PRELIMINARY
DWG DATE MAR 2011	DRAWN BY JF	APPR BY TC
PLOT DATE 14/5/13	REV	ISSUE 1
DRAWING NUMBER		A101





01 PLAN - LEVEL 02 PODIUM  
1:200 @ A1

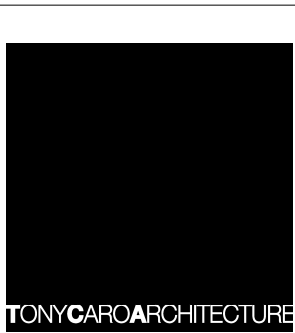
GENERAL LEGEND

-ALL ARCHITECTURAL DRAWINGS AND DOCUMENTS TO BE READ IN CONJUNCTION WITH OTHER CONSULTANTS DRAWINGS AND REPORTS  
-FOR ALL EXTERNAL LEVELS REFER LANDSCAPE DRAWINGS.  
-USE FIGURE DIMENSIONS ONLY - DO NOT SCALE FROM DRAWINGS. IF UNSURE CONFIRM DIMENSION WITH ARCHITECT PRIOR TO PROCEEDING  
-COPYRIGHT TONY CARO ARCHITECTURE  
-DIGITAL FILES ARE ISSUED FOR INFORMATION ONLY. CHANGES MUST NOT BE MADE TO DOCUMENTS WITHOUT ARCHITECTS CONSENT

LEGEND - EXTERNAL FINISHES

AVB ALUMINIUM VERTICAL BLADE - VARYING DEPTHS (300, 450, 600mm)  
ALS ALUMINIUM SLIDING SCREENS  
BLG BALUSTRADE - GLASS  
BLC BALUSTRADE - CONCRETE WITH PAINTED FINISH OR SIMILAR  
BLM BALUSTRADE - METAL  
G\_1 GLAZING TYPE 1 - CLEAR  
G\_2 GLAZING TYPE 2 - TRANSLUCENT GLASS. COLOUR TBA  
G\_3 GLAZING TYPE 3 - OPAQUE FILM APPLIED. COLOUR TBA

PC\_1 PRECAST CONCRETE SPANDREL PANELS WITH PENETRATING PAINT FINISH OR SIMILAR  
PC\_2 SMOOTH PRECAST CONCRETE WITH PAINTED FINISH (LIGHT) OR SIMILAR  
PC\_3 SMOOTH PRECAST CONCRETE WITH PAINTED FINISH (DARK) OR SIMILAR  
PFC PAINTED FC CLADDING  
PFS PERFORATED METAL SCREEN



DRAWING PREPARED FOR:  
**MERITON**  
MERITON APARTMENTS  
LEVEL 11, MERITON TOWER  
528 KENT STREET, SYDNEY  
BY:  
TONY CARO ARCHITECTURE PTY LTD  
LEVEL 1, 2 GLEN ST MILSONS POINT  
NSW 2061 SYDNEY AUSTRALIA  
T 99949100 F 99949133  
WWW.TONYCAROARCHITECTURE.COM.AU

ISSUE REGISTER	
1	Issue
No	Date Note

REVISION REGISTER	
1	Revision
No	Date Note

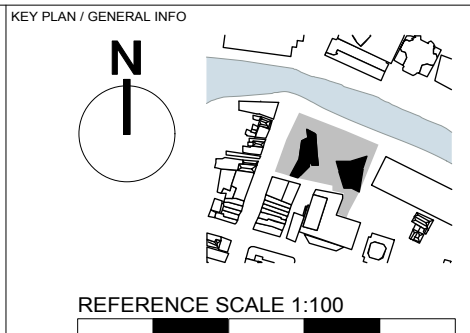
LEGEND
By

KEY CONSULTANT INFO	
LANDSCAPE:	GUY STURT & ASSOC GUY STURT 9211 3744 guy@sturtassociates.com.au
STRUCTURAL:	MERITON GEOFF 9211 3744 guy@sturtassociates.com.au
HYDRAULIC:	TBA TBA TBA

KEY CONSULTANT INFO	
BASIX:	EFFICIENT LIVING TRACEY COOLESTRACEY COOLES 9946 0332 tracye@efficientliving.com.au
SOLAR ACCESS:	HEGGIES NEHAD AL-KHALIDY 9427 8100 nehad.al-khalidy@heggies.com.au
TRAFFIC:	TTPA ROSS NETTLE 0416 189 656 rtpa@tpa.com.au

GENERAL NOTES  
DO NOT SCALE OFF THIS DRAWING. USE FIGURED DIMENSIONS ONLY. VERIFY ALL DIMENSIONS ON SITE AND RESOLVE ANY DISCREPANCIES BEFORE PROCEEDING. COPYRIGHT OF THIS DRAWING AND THE DESIGNS EXECUTED REMAIN THE PROPERTY OF TONY CARO ARCHITECTURE. BUILDER TO EXAMINE SITE AND VERIFY SITE CONDITIONS PRIOR TO COMMENCING WORK. BUILDER TO CONFIRM BUILDING SETOUT PRIOR TO COMMENCING WORK. ALL ARCHITECTURAL DRAWINGS TO BE READ IN CONJUNCTION WITH OTHER ARCHITECTURAL DETAILS, SCHEDULES AND SPECIFICATIONS. ALL ARCHITECTURAL DRAWINGS AND DOCUMENTS TO BE READ IN CONJUNCTION WITH OTHER CONSULTANTS

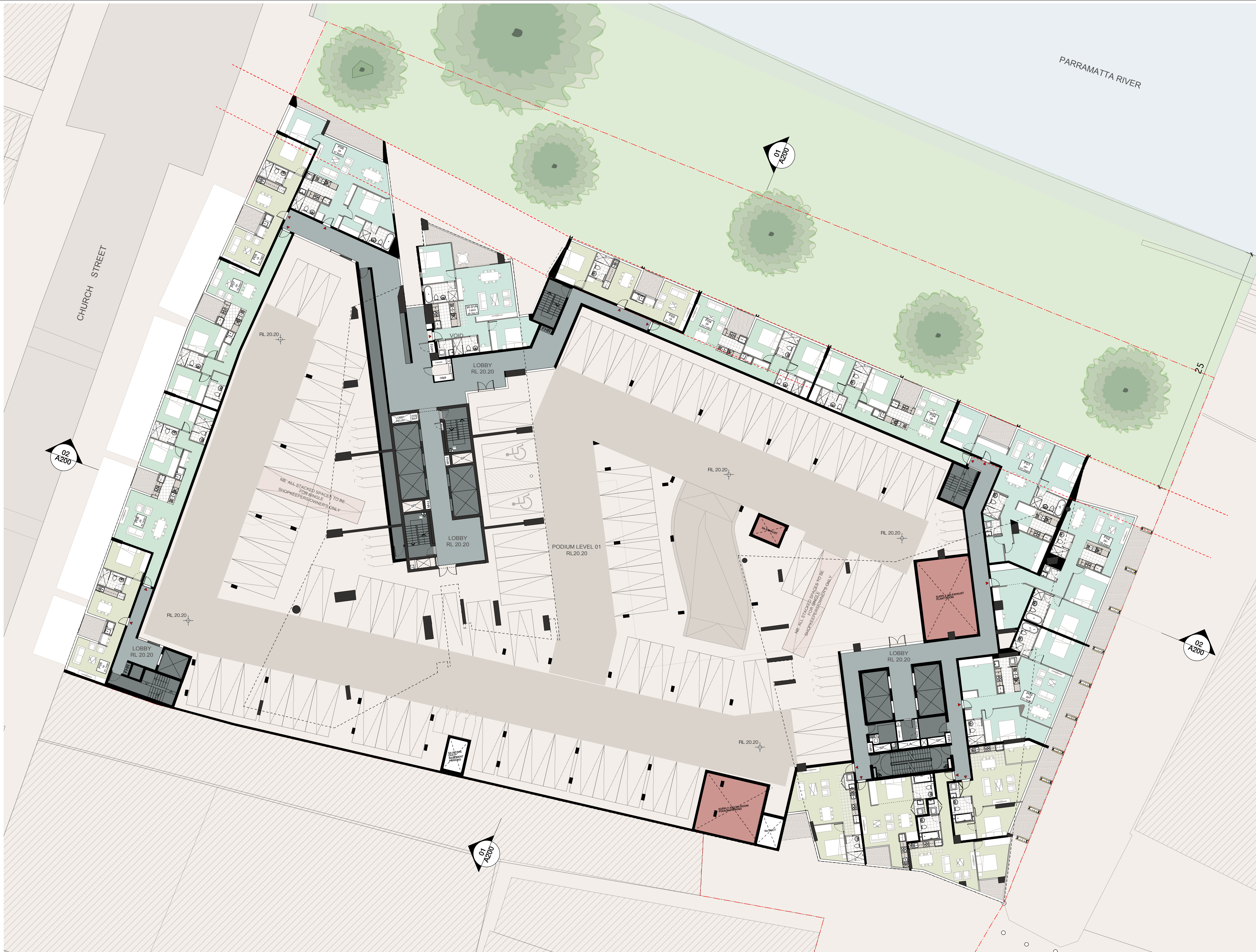
DRAWINGS AND SPECIFICATIONS. BUILDER TO ALLOW FOR DEFLECTION TO ALL SLABS AS REQUIRED TO STRUCTURAL ENGINEERS SPECIFICATION. CAD DOCUMENTS ARE ISSUED FOR INFORMATION ONLY. CHANGES ARE NOT TO BE MADE TO ANY DOCUMENTATION WITHOUT THE ARCHITECTS WRITTEN APPROVAL. TCA TAKES NO RESPONSIBILITY FOR THE ELECTRONIC TRANSMISSION. DIMENSIONS OR ACCURACY OF THESE DRAWINGS: CEILING LEVEL AT NOMINATED DISTANCE FROM FINISHED FLOOR LEVEL. FOR ALL EXTERNAL LEVELS REFER TO LANDSCAPE ARCHITECTS DRAWINGS.



PROJECT	RIVERFRONT APARTMENTS
330 CHURCH STREET PARRAMATTA NSW	
DRAWING NAME	Plan_Level 02 Podium

SCALE	1:200	PAGE SIZE	A1	STATUS	PRELIMINARY
DWG DATE	MAR 2011	DRAWN BY	JF	APPR BY	TC
PLOT DATE	14/5/13	REV		ISSUE	1
DRAWING NUMBER					





01 PLAN - LEVEL 03 PODIUM  
1:200 @ A1

GENERAL LEGEND

-ALL ARCHITECTURAL DRAWINGS AND DOCUMENTS TO BE READ IN CONJUNCTION WITH OTHER CONSULTANTS DRAWINGS AND REPORTS  
-FOR ALL EXTERNAL LEVELS REFER LANDSCAPE DRAWINGS.  
-USE FIGURE DIMENSIONS ONLY - DO NOT SCALE FROM DRAWINGS. IF UNSURE CONFIRM DIMENSION WITH ARCHITECT PRIOR TO PROCEEDING  
-COPYRIGHT TONY CARO ARCHITECTURE  
-DIGITAL FILES ARE ISSUED FOR INFORMATION ONLY. CHANGES MUST NOT BE MADE TO DOCUMENTS WITHOUT ARCHITECTS CONSENT

LEGEND - EXTERNAL FINISHES

AVB ALUMINIUM VERTICAL BLADE - VARYING DEPTHS (300, 450, 600mm)  
ALS ALUMINIUM SLIDING SCREENS  
BLG BALUSTRADE - GLASS  
BLC BALUSTRADE - CONCRETE WITH PAINTED FINISH OR SIMILAR  
BLM BALUSTRADE - METAL  
G\_1 GLAZING TYPE 1 - CLEAR  
G\_2 GLAZING TYPE 2 - TRANSLUCENT GLASS. COLOUR TBA  
G\_3 GLAZING TYPE 3 - OPAQUE FILM APPLIED. COLOUR TBA

PC\_1 PRECAST CONCRETE SPANDEL PANELS WITH PENETRATING PAINT FINISH OR SIMILAR  
PC\_2 SMOOTH PRECAST CONCRETE WITH PAINTED FINISH (LIGHT) OR SIMILAR  
PC\_3 SMOOTH PRECAST CONCRETE WITH PAINTED FINISH (DARK) OR SIMILAR  
PFC PAINTED FC CLADDING  
PFS PERFORATED METAL SCREEN

<div>DRAWING PREPARED FOR:</div> <div><div><div><div></div><div>MERITON</div><div><small>RESIDUAL DEVELOPMENTS</small></div></div></div><div>MERITON APARTMENTS LEVEL 11, MERITON TOWER 528 KENT STREET, SYDNEY</div><div>BY:</div><div>TONY CARO ARCHITECTURE PTY LTD LEVEL 1, 2 GLEN ST MILSONS POINT NSW 2061 SYDNEY AUSTRALIA T 99649100 F 99649133 WWW.TONYCAROARCHITECTURE.COM.AU</div></div>		<div>ISSUE REGISTER</div> <table><tr><th>1</th><th>Issue</th></tr><tr><td>No</td><td>Date Note</td></tr></table>		1	Issue	No	Date Note	<div>REVISION REGISTER</div> <table><tr><th>By</th><th>No</th><th>Date</th><th>Note</th></tr><tr><td></td><td></td><td></td><td></td></tr></table>		By	No	Date	Note					<div>LEGEND</div> <table><tr><th>By</th></tr><tr><td></td></tr></table>		By		<div>KEY CONSULTANT INFO</div> <table><tr><td>LANDSCAPE</td><td>GUY STURT &amp; ASSOC GUY STURT 9211 3744 guy@sturtassociates.com.au</td></tr><tr><td>STRUCTURAL</td><td>MERITON GEOFF 9211 3744 guy@sturtassociates.com.au</td></tr><tr><td>HYDRAULIC</td><td>TBA TBA TBA</td></tr></table>		LANDSCAPE	GUY STURT & ASSOC GUY STURT 9211 3744 guy@sturtassociates.com.au	STRUCTURAL	MERITON GEOFF 9211 3744 guy@sturtassociates.com.au	HYDRAULIC	TBA TBA TBA	<div>KEY CONSULTANT INFO</div> <table><tr><td>BASIX</td><td>EFFICIENT LIVING TRACEY COOLESTRACEY COOLE 9946 0332 tracy@efficientliving.com.au</td></tr><tr><td>SOLAR ACCESS</td><td>HEGGIES NEHAD AL-KHALIDY 9427 8100 nehad.al-khalidy@heggies.com.au</td></tr><tr><td>TRAFFIC</td><td>TTPA ROSS NETTLE 0416 189 656 ttpa@ttpa.com.au</td></tr></table>		BASIX	EFFICIENT LIVING TRACEY COOLESTRACEY COOLE 9946 0332 tracy@efficientliving.com.au	SOLAR ACCESS	HEGGIES NEHAD AL-KHALIDY 9427 8100 nehad.al-khalidy@heggies.com.au	TRAFFIC	TTPA ROSS NETTLE 0416 189 656 ttpa@ttpa.com.au	<div>GENERAL NOTES</div> <div>DO NOT SCALE OFF THIS DRAWING. USE FIGURED DIMENSIONS ONLY. VERIFY ALL DIMENSIONS ON SITE AND RESOLVE ANY DISCREPANCIES BEFORE PROCEEDING. COPYRIGHT OF THIS DRAWING AND THE DESIGNS EXECUTED REMAIN THE PROPERTY OF TONY CARO ARCHITECTURE. BUILDER TO EXAMINE SITE AND VERIFY SITE CONDITIONS PRIOR TO COMMENCING WORK. BUILDER TO CONFIRM BUILDING SETOUT PRIOR TO COMMENCING WORK. ALL ARCHITECTURAL DRAWINGS TO BE READ IN CONJUNCTION WITH OTHER ARCHITECTURAL DETAILS, SCHEDULES AND SPECIFICATIONS. ALL ARCHITECTURAL DRAWINGS AND DOCUMENTS TO BE READ IN CONJUNCTION WITH OTHER CONSULTANTS</div>		<div>DRAWINGS AND SPECIFICATIONS. BUILDER TO ALLOW FOR DEFLECTION TO ALL SLABS AS REQUIRED TO STRUCTURAL ENGINEERS SPECIFICATION. CAD DOCUMENTS ARE ISSUED FOR INFORMATION ONLY. CHANGES ARE NOT TO BE MADE TO ANY DOCUMENTATION WITHOUT THE ARCHITECTS WRITTEN APPROVAL. TCA TAKES NO RESPONSIBILITY FOR THE ELECTRONIC TRANSMISSION, DIMENSIONS OR ACCURACY OF THESE DRAWINGS. CEILING LEVEL AT NOMINATED DISTANCE FROM FINISHED FLOOR LEVEL. FOR ALL EXTERNAL LEVELS REFER TO LANDSCAPE ARCHITECTS DRAWINGS.</div>		<div>KEY PLAN / GENERAL INFO</div> <div><div><div><div></div><div>N</div></div><div><div></div><div></div><div></div><div></div><div></div><div></div><div></div><div></div><div></div><div></div><div></div><div></div><div></div><div></div><div></div><div></div><div></div><div></div><div></div><div></div><div></div><div></div><div></div><div></div><div></div><div></div><div></div><div></div><div></div><div></div><div></div><div></div><div></div><div></div><div></div><div></div><div></div><div></div><div></div><div></div><div></div><div></div><div></div><div></div><div></div><div></div><div></div><div></div><div></div><div></div><div></div><div></div><div></div><div></div><div></div><div></div><div></div><div></div><div></div><div></div><div></div><div></div><div></div><div></div><div></div><div></div><div></div><div></div><div></div><div></div><div></div><div></div><div></div><div></div><div></div><div></div><div></div><div></div><div></div><div></div><div></div><div></div><div></div><div></div><div></div><div></div><div></div><div></div><div></div><div></div><div></div><div></div><div></div><div></div><div></div><div></div><div></div><div></div><div></div><div></div><div></div><div></div><div></div><div></div><div></div><div></div><div></div><div></div><div></div><div></div><div></div><div></div><div></div><div></div><div></div><div></div><div></div><div></div><div></div><div></div><div></div><div></div><div></div><div></div><div></div><div></div><div></div><div></div><div></div><div></div><div></div><div></div><div></div><div></div><div></div><div></div><div></div><div></div><div></div><div></div><div></div><div></div><div></div><div></div><div></div><div></div><div></div><div></div><div></div><div></div><div></div><div></div><div></div><div></div><div></div><div></div><div></div><div></div><div></div><div></div><div></div><div></div><div></div><div></div><div></div><div></div><div></div><div></div><div></div><div></div><div></div><div></div><div></div><div></div><div></div><div></div><div></div><div></div><div></div><div></div><div></div><div></div><div></div><div></div><div></div><div></div><div></div><div></div><div></div><div></div><div></div><div></div><div></div><div></div><div></div><div></div><div></div><div></div><div></div><div></div><div></div><div></div><div></div><div></div><div></div><div></div><div></div><div></div><div></div><div></div><div></div><div></div><div></div><div></div><div></div><div></div><div></div><div></div><div></div><div></div><div></div><div></div><div></div><div></div><div></div><div></div><div></div><div></div><div></div><div></div><div></div><div></div><div></div><div></div><div></div><div></div><div></div><div></div><div></div><div></div><div></div><div></div><div></div><div></div><div></div><div></div><div></div><div></div><div></div><div></div><div></div><div></div><div></div><div></div><div></div><div></div><div></div><div></div><div></div><div></div><div></div><div></div><div></div><div></div><div></div><div></div><div></div><div></div><div></div><div></div><div></div><div></div><div></div><div></div><div></div><div></div><div></div><div></div><div></div><div></div><div></div><div></div><div></div><div></div><div></div><div></div><div></div><div></div><div></div><div></div><div></div><div></div><div></div><div></div><div></div><div></div><div></div><div></div><div></div><div></div><div></div><div></div><div></div><div></div><div></div><div></div><div></div><div></div><div></div><div></div><div></div><div></div><div></div><div></div><div></div><div></div><div></div><div></div><div></div><div></div><div></div><div></div><div></div><div></div><div></div><div></div><div></div><div></div><div></div><div></div><div></div><div></div><div></div><div></div><div></div><div></div><div></div><div></div><div></div><div></div><div></div><div></div><div></div><div></div><div></div><div></div><div></div><div></div><div></div><div></div><div></div><div></div><div></div><div></div><div></div><div></div><div></div><div></div><div></div><div></div><div></div><div></div><div></div><div></div><div></div><div></div><div></div><div></div><div></div><div></div><div></div><div></div><div></div><div></div><div></div><div></div><div></div><div></div><div></div><div></div><div></div><div></div><div></div><div></div><div></div><div></div><div></div><div></div><div></div><div></div><div></div><div></div><div></div><div></div><div></div><div></div><div></div><div></div><div></div><div></div><div></div><div></div><div></div><div></div><div></div><div></div><div></div><div></div><div></div><div></div><div></div><div></div><div></div><div></div><div></div><div></div><div></div><div></div><div></div><div></div><div></div><div></div><div></div><div></div><div></div><div></div><div></div><div></div><div></div><div></div><div></div><div></div><div></div><div></div><div></div><div></div><div></div><div></div><div></div><div></div><div></div><div></div><div></div><div></div><div></div><div></div><div></div><div></div><div></div><div></div><div></div><div></div><div></div><div></div><div></div><div></div><div></div><div></div><div></div><div></div><div></div><div></div><div></div><div></div><div></div><div></div><div></div><div></div><div></div><div></div><div></div><div></div><div></div><div></div><div></div><div></div><div></div><div></div><div></div><div></div><div></div><div></div><div></div><div></div><div></div><div></div><div></div><div></div><div></div><div></div><div></div><div></div><div></div><div></div><div></div><div></div><div></div><div></div><div></div><div></div><div></div><div></div><div></div><div></div><div></div><div></div><div></div><div></div><div></div><div></div><div></div><div></div><div></div><div></div><div></div><div></div><div></div><div></div><div></div><div></div><div></div><div></div><div></div><div></div><div></div><div></div><div></div><div></div><div></div><div></div><div></div><div></div><div></div><div></div><div></div><div></div><div></div><div></div><div></div><div></div><div></div><div></div><div></div><div></div><div></div><div></div><div></div><div></div><div></div><div></div><div></div><div></div><div></div><div></div><div></div><div></div><div></div><div></div><div></div><div></div><div></div><div></div><div></div><div></div><div></div><div></div><div></div><div></div><div></div><div></div><div></div><div></div><div></div><div></div><div></div><div></div><div></div><div></div><div></div><div></div><div></div><div></div><div></div><div></div><div></div><div></div><div></div><div></div><div></div><div></div><div></div><div></div><div></div><div></div><div></div><div></div><div></div><div></div><div></div><div></div><div></div><div></div><div></div><div></div><div></div><div></div><div></div><div></div><div></div><div></div><div></div><div></div><div></div><div></div><div></div><div></div><div></div><div></div><div></div><div></div><div></div><div></div><div></div><div></div><div></div><div></div><div></div><div></div><div></div><div></div><div></div><div></div><div></div><div></div><div></div><div></div><div></div><div></div><div></div><div></div><div></div><div></div><div></div><div></div><div></div><div></div><div></div><div></div><div></div><div></div><div></div><div></div><div></div><div></div><div></div><div></div><div></div><div></div><div></div><div></div><div></div><div></div><div></div><div></div><div></div><div></div><div></div><div></div><div></div><div></div><div></div><div></div><div></div><div></div><div></div><div></div><div></div><div></div><div></div><div></div><div></div><div></div><div></div><div></div><div></div><div></div><div></div><div></div><div></div><div></div><div></div><div></div><div></div><div></div><div></div><div></div><div></div><div></div><div></div><div></div><div></div><div></div><div></div><div></div><div></div><div></div><div></div><div></div><div></div><div></div><div></div><div></div><div></div><div></div><div></div><div></div><div></div><div></div><div></div><div></div><div></div><div></div><div></div><div></div><div></div><div></div><div></div><div></div><div></div><div></div><div></div><div></div><div></div><div></div><div></div><div></div><div></div><div></div><div></div><div></div><div></div><div></div><div></div><div></div><div></div><div></div><div></div><div></div><div></div><div></div><div></div><div></div><div></div><div></div><div></div><div></div><div></div><div></div><div></div><div></div><div></div><div></div><div></div><div></div><div></div><div></div><div></div><div></div><div></div><div></div><div></div><div></div><div></div><div></div><div></div><div></div><div></div><div></div><div></div><div></div><div></div><div></div><div></div><div></div><div></div><div></div><div></div><div></div><div></div><div></div><div></div><div></div><div></div><div></div><div></div><div></div><div></div><div></div><div></div><div></div><div></div><div></div><div></div><div></div><div></div><div></div><div></div><div></div><div></div><div></div><div></div><div></div><div></div><div></div><div></div><div></div><div></div><div></div><div></div><div></div><div></div><div></div><div></div><div></div><div></div><div></div><div></div><div></div><div></div><div></div><div></div><div></div><div></div><div></div><div></div><div></div><div></div><div></div><div></div><div></div><div></div><div></div><div></div><div></div><div></div><div></div><div></div><div></div><div></div><div></div><div></div><div></div><div></div><div></div><div></div><div></div><div></div><div></div><div></div><div></div><div></div><div></div><div></div><div></div><div></div><div></div><div></div><div></div><div></div><div></div><div></div><div></div><div></div><div></div><div></div><div></div><div></div><div></div><div></div><div></div><div></div><div></div><div></div><div></div><div></div><div></div><div></div><div></div><div></div><div></div><div></div><div></div><div></div><div></div><div></div><div></div><div></div><div></div><div></div><div></div><div></div><div></div><div></div><div></div><div></div><div></div><div></div><div></div><div></div><div></div><div></div><div></div><div></div><div></div><div></div><div></div><div></div><div></div><div></div><div></div><div></div><div></div><div></div><div></div><div></div><div></div><div></div><div></div><div></div><div></div><div></div><div></div><div></div><div></div><div></div><div></div><div></div><div></div><div></div><div></div><div></div><div></div><div></div><div></div><div></div><div></div><div></div><div></div><div></div><div></div><div></div><div></div><div></div><div></div><div></div><div></div><div></div><div></div><div></div><div></div><div></div><div></div><div></div><div></div><div></div><div></div><div></div><div></div><div></div><div></div><div></div><div></div><div></div><div></div><div></div><div></div><div></div><div></div><div></div><div></div><div></div><div></div><div></div><div></div><div></div><div></div><div></div><div></div><div></div><div></div><div></div><div></div><div></div><div></div><div></div><div></div><div></div><div></div><div></div><div></div><div></div><div></div><div></div><div></div><div></div><div></div><div></div><div></div><div></div><div></div><div></div><div></div><div></div><div></div><div></div><div></div><div></div>&lt;</div></div></div>			
1	Issue																																												
No	Date Note																																												
By	No	Date	Note																																										
By																																													
LANDSCAPE	GUY STURT & ASSOC GUY STURT 9211 3744 guy@sturtassociates.com.au																																												
STRUCTURAL	MERITON GEOFF 9211 3744 guy@sturtassociates.com.au																																												
HYDRAULIC	TBA TBA TBA																																												
BASIX	EFFICIENT LIVING TRACEY COOLESTRACEY COOLE 9946 0332 tracy@efficientliving.com.au																																												
SOLAR ACCESS	HEGGIES NEHAD AL-KHALIDY 9427 8100 nehad.al-khalidy@heggies.com.au																																												
TRAFFIC	TTPA ROSS NETTLE 0416 189 656 ttpa@ttpa.com.au																																												





01 PLAN - LEVEL 04 PODIUM ROOF  
1:200 @ A1

#### GENERAL LEGEND

-ALL ARCHITECTURAL DRAWINGS AND DOCUMENTS TO BE READ IN CONJUNCTION WITH OTHER CONSULTANTS DRAWINGS AND REPORTS  
-FOR ALL EXTERNAL LEVELS REFER LANDSCAPE DRAWINGS. IF  
-USE FIGURE DIMENSIONS ONLY - DO NOT SCALE FROM DRAWINGS. IF  
-UNSURE CONFIRM DIMENSION WITH ARCHITECT PRIOR TO PROCEEDING  
-COPYRIGHT TONY CARO ARCHITECTURE  
-DIGITAL FILES ARE ISSUED FOR INFORMATION ONLY. CHANGES MUST NOT  
-BE MADE TO DOCUMENTS WITHOUT ARCHITECTS CONSENT

#### LEGEND - EXTERNAL FINISHES

AVB ALUMINIUM VERTICAL BLADE - VARYING DEPTHS (300, 450, 600mm)  
ALS ALUMINIUM SLIDING SCREENS  
BLC BALUSTRADE - GLASS  
BLC BALUSTRADE - CONCRETE WITH PAINTED FINISH OR SIMILAR  
BLM BALUSTRADE - METAL  
G\_1 GLAZING TYPE 1 - CLEAR  
G\_2 GLAZING TYPE 2 - TRANSLUCENT GLASS. COLOUR TBA  
G\_3 GLAZING TYPE 3 - OPAQUE FILM APPLIED. COLOUR TBA

PC\_1 PRECAST CONCRETE SPANDREL PANELS WITH  
PENETRATING PAINT FINISH OR SIMILAR  
PC\_2 SMOOTH PRECAST CONCRETE WITH PAINTED FINISH  
(LIGHT) OR SIMILAR  
PC\_3 SMOOTH PRECAST CONCRETE WITH PAINTED FINISH  
(DARK) OR SIMILAR  
PFC PAINTED FC CLADDING  
PFS PERFORATED METAL SCREEN

DRAWING PREPARED FOR:  
**MERITON**  
MERITON APARTMENTS  
LEVEL 11, MERITON TOWER  
528 KENT STREET, SYDNEY  
BY:  
TONY CARO ARCHITECTURE PTY LTD  
LEVEL 1, 2 GLEN ST MILSONS POINT  
NSW 2061 SYDNEY AUSTRALIA  
T 99649100 P 99649133  
WWW.TONYCAROARCHITECTURE.COM.AU

ISSUE REGISTER	
No	Date Note
7	17/01/13 Amended s 75w Application JF
6	17/02/12 Consent Revision - Final Package Star JF
5	23/11/11 DA Issue - Additional Information JF
4	18/01/11 Issues for DA JF
3	28/01/11 Preliminary DA for review JF
2	28/01/11 TEST JF
1	28/01/11 PROGRESS MEETING JF

REVISION REGISTER	
By	No Date Note
JF	

LEGEND	
By	

KEY CONSULTANT INFO	
LANDSCAPE	GUY STURT & ASSOC GUY STURT 9211 3744 guy@sturtassociates.com.au
STRUCTURAL	MERITON GEOFF 9211 3744 guy@sturtassociates.com.au
HYDRAULIC	TBA TBA TBA

KEY CONSULTANT INFO	
BASIX	EFFICIENT LIVING TRACEY COOLESTRACEY COOLES 9946 0332 tracy@efficientliving.com.au
SOLAR ACCESS	HEGGIES NEHAID AL-KHALIDY 9427 8100 nehaid.al-khalidy@heggies.com.au
TRAFFIC	TTPA ROSS NETTLE 0416 189 656 ttpa@ttpa.com.au

GENERAL NOTES  
DO NOT SCALE OFF THIS DRAWING. USE FIGURED  
DIMENSIONS ONLY. VERIFY ALL DIMENSIONS ON  
SITE AND RESOLVE ANY DISCREPANCIES BEFORE  
PROCEEDING. COPYRIGHT OF THIS DRAWING AND  
THE DESIGNS EXECUTED REMAIN THE PROPERTY  
OF TONY CARO ARCHITECTURE. BUILDER TO  
EXAMINE SITE AND VERIFY SITE CONDITIONS  
PRIOR TO COMMENCING WORK. BUILDER TO  
CONFIRM BUILDING SETOUT PRIOR TO  
COMMENCING WORK. ALL ARCHITECTURAL  
DRAWINGS TO BE READ IN CONJUNCTION WITH  
OTHER ARCHITECTURAL DETAILS, SCHEDULES  
AND SPECIFICATIONS. ALL ARCHITECTURAL  
DRAWINGS AND DOCUMENTS TO BE READ IN  
CONJUNCTION WITH OTHER CONSULTANTS

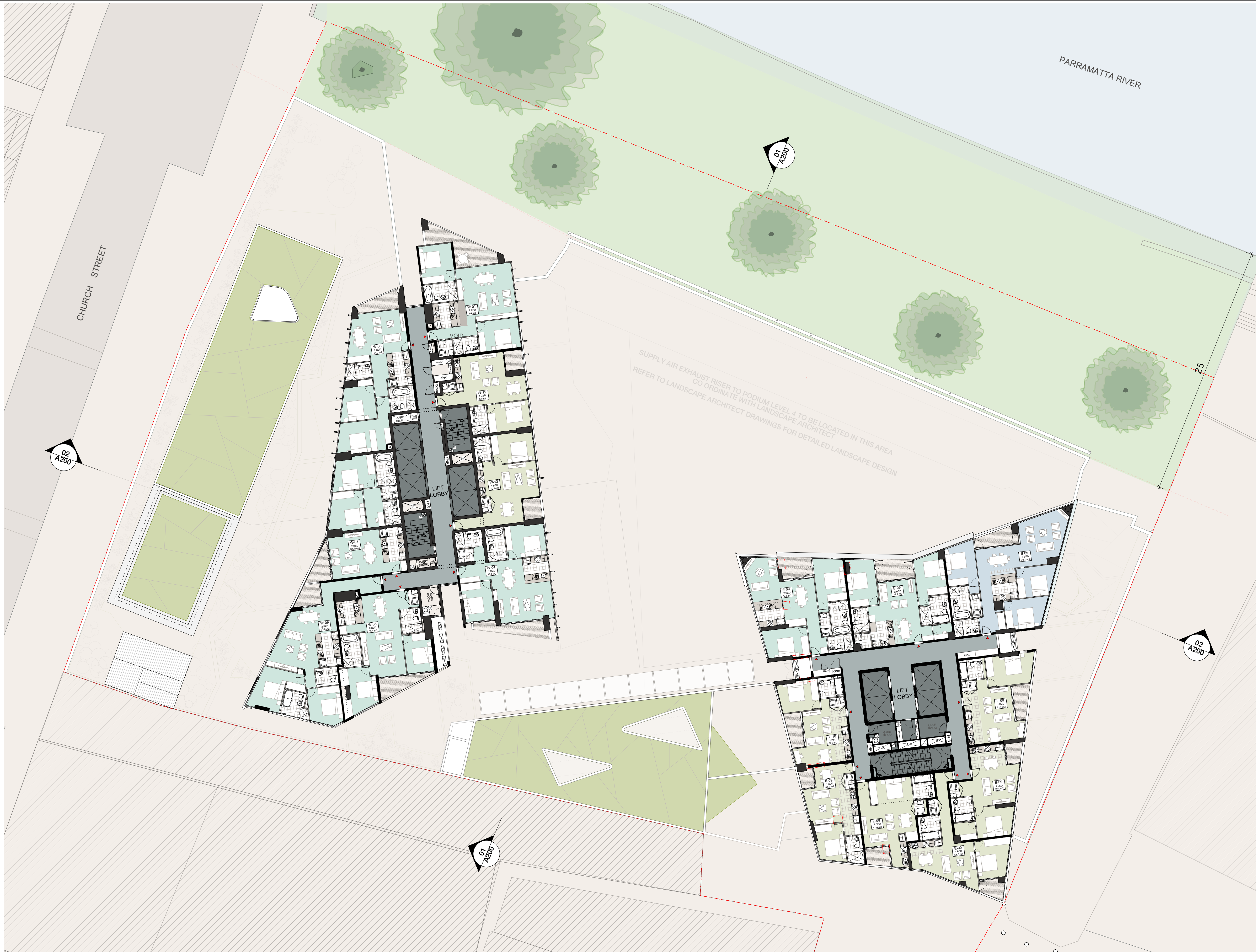
DRAWINGS AND SPECIFICATIONS. BUILDER TO  
ALLOW FOR DEFLECTION TO ALL SLABS AS  
REQUIRED TO STRUCTURAL ENGINEERS  
SPECIFICATION. CAD DOCUMENTS ARE ISSUED  
FOR INFORMATION ONLY. CHANGES ARE NOT TO  
BE MADE TO ANY DOCUMENTATION WITHOUT THE  
ARCHITECTS WRITTEN APPROVAL. TCA TAKES NO  
RESPONSIBILITY FOR THE ELECTRONIC  
TRANSMISSION, DIMENSIONS OR ACCURACY OF  
THESE DRAWINGS. CEILING LEVEL AT NOMINATED  
DISTANCE FROM FINISHED FLOOR LEVEL. FOR ALL  
EXTERNAL LEVELS REFER TO LANDSCAPE  
ARCHITECTS DRAWINGS.

KEY PLAN / GENERAL INFO	
N	
REFERENCE SCALE 1:200	
0 2 4 6 8 10	

PROJECT	
RIVERFRONT APARTMENTS 330 CHURCH STREET PARRAMATTA NSW	
DRAWING NAME	
Plan_Level 04	

SCALE	PAGE SIZE	STATUS
1:200	A1	PRELIMINARY
DWG DATE MAR 2011	DRAWN BY JF	APPR BY TC
PLOT DATE 10/5/13	REV	ISSUE 7
DRAWING NUMBER		
A104		





01 PLAN - LEVEL 05 - TYPICAL LOWER TOWER  
1:200 @ A1

#### GENERAL LEGEND

-ALL ARCHITECTURAL DRAWINGS AND DOCUMENTS TO BE READ IN CONJUNCTION WITH OTHER CONSULTANTS DRAWINGS AND REPORTS  
-FOR ALL EXTERNAL LEVELS REFER LANDSCAPE DRAWINGS.  
-USE FIGURE DIMENSIONS ONLY - DO NOT SCALE FROM DRAWINGS. IF UNSURE CONFIRM DIMENSION WITH ARCHITECT PRIOR TO PROCEEDING  
-COPYRIGHT TONY CARO ARCHITECTURE  
-DIGITAL FILES ARE ISSUED FOR INFORMATION ONLY. CHANGES MUST NOT BE MADE TO DOCUMENTS WITHOUT ARCHITECTS CONSENT

#### LEGEND - EXTERNAL FINISHES

AVB ALUMINIUM VERTICAL BLADE - VARYING DEPTHS (300, 450, 600mm)  
ALS ALUMINIUM SLIDING SCREENS  
BLC BALUSTRADE - GLASS  
BLC BALUSTRADE - CONCRETE WITH PAINTED FINISH OR SIMILAR  
BLM BALUSTRADE - METAL  
G-1 GLAZING TYPE 1 - CLEAR  
G-2 GLAZING TYPE 2 - TRANSLUCENT GLASS. COLOUR TBA  
G-3 GLAZING TYPE 3 - OPAQUE FILM APPLIED. COLOUR TBA

PC\_1 PRECAST CONCRETE SPANDREL PANELS WITH PENETRATING PAINT FINISH OR SIMILAR  
PC\_2 SMOOTH PRECAST CONCRETE WITH PAINTED FINISH (LIGHT) OR SIMILAR  
PC\_3 SMOOTH PRECAST CONCRETE WITH PAINTED FINISH (DARK) OR SIMILAR  
PFC PAINTED FC CLADDING  
PFS PERFORATED METAL SCREEN

DRAWING PREPARED FOR:  
**MERITON**  
MERITON APARTMENTS  
LEVEL 11, MERITON TOWER  
528 KENT STREET, SYDNEY  
BY:  
TONY CARO ARCHITECTURE PTY LTD  
LEVEL 1, 2 GLEN ST MILSONS POINT  
NSW 2061 SYDNEY AUSTRALIA  
T 99649100 F 99649133  
WWW.TONYCAROARCHITECTURE.COM.AU

ISSUE REGISTER	
No	Date Note
7	17/01/13 Amended s 75w Application
6	17/02/12 Consent Renewal - Final Package Star
5	23/11/11 DA Issue - Additional Information
4	18/01/11 Revised for DA
3	28/01/11 Preliminary DA for review
2	28/01/11 TEST
1	28/01/11 PROGRESS MEETING

REVISION REGISTER	
By	No Date Note
JF	
JF	
JF	
JF	
JF	
SA	
SA	

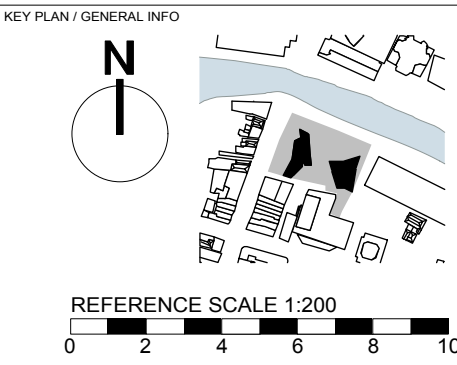
LEGEND	
By	No Date Note

KEY CONSULTANT INFO	
LANDSCAPE	GUY STURT & ASSOC GUY STURT 9211 3744 guy@sturtassociates.com.au
STRUCTURAL	MERITON GEOFF 9211 3744 guy@sturtassociates.com.au
HYDRAULIC	TBA TBA TBA

KEY CONSULTANT INFO	
BASIX	EFFICIENT LIVING TRACEY COOLESTRACEY COOLES 9949 0332 trac@efficientliving.com.au
SOLAR ACCESS	HEGGIES NEHAID AL-KHALIDY 9427 8100 nehaid.al-khalidy@heggies.com.au
TRAFFIC	TTPA ROSS NETTLE 0416 189 656 tppa@tppa.com.au

GENERAL NOTES  
DO NOT SCALE OFF THIS DRAWING. USE FIGURED DIMENSIONS ONLY. VERIFY ALL DIMENSIONS ON SITE AND RESOLVE ANY DISCREPANCIES BEFORE PROCEEDING. COPYRIGHT OF THIS DRAWING AND THE DESIGNS EXECUTED REMAIN THE PROPERTY OF TONY CARO ARCHITECTURE. BUILDER TO EXAMINE SITE AND VERIFY SITE CONDITIONS PRIOR TO COMMENCING WORK. BUILDER TO CONFIRM BUILDING SETOUT PRIOR TO COMMENCING WORK. ALL ARCHITECTURAL DRAWINGS TO BE READ IN CONJUNCTION WITH OTHER ARCHITECTURAL DETAILS, SCHEDULES AND SPECIFICATIONS. ALL ARCHITECTURAL DRAWINGS AND DOCUMENTS TO BE READ IN CONJUNCTION WITH OTHER CONSULTANTS

DRAWINGS AND SPECIFICATIONS. BUILDER TO ALLOW FOR DEFLECTION TO ALL SLABS AS REQUIRED TO STRUCTURAL ENGINEERS SPECIFICATION. CAD DOCUMENTS ARE ISSUED FOR INFORMATION ONLY. CHANGES ARE NOT TO BE MADE TO ANY DOCUMENTATION WITHOUT THE ARCHITECTS WRITTEN APPROVAL. TCA TAKES NO RESPONSIBILITY FOR THE ELECTRONIC TRANSMISSION. DIMENSIONS OR ACCURACY OF THESE DRAWINGS. CEILING LEVEL AT NOMINATED DISTANCE FROM FINISHED FLOOR LEVEL. FOR ALL EXTERNAL LEVELS REFER TO LANDSCAPE ARCHITECTS DRAWINGS.



PROJECT  
RIVERFRONT APARTMENTS  
330 CHURCH STREET  
PARRAMATTA NSW  
DRAWING NAME  
Plan\_Level 05 Typical  
Tower Lower

SCALE	PAGE SIZE	STATUS
1:200	A1	PRELIMINARY
DWG DATE MAR 2011	DRAWN BY JF	APPR BY TC
PLOT DATE 10/5/13	REV	ISSUE 7
DRAWING NUMBER		A105





01 PLAN - TYPICAL TOWER MIDDLE  
1:200 @ A1

GENERAL LEGEND

-ALL ARCHITECTURAL DRAWINGS AND DOCUMENTS TO BE READ IN CONJUNCTION WITH OTHER CONSULTANTS DRAWINGS AND REPORTS  
-FOR ALL EXTERNAL LEVELS REFER LANDSCAPE DRAWINGS.  
-USE FIGURE DIMENSIONS ONLY - DO NOT SCALE FROM DRAWINGS. IF UNSURE CONFIRM DIMENSION WITH ARCHITECT PRIOR TO PROCEEDING  
-COPYRIGHT TONY CARO ARCHITECTURE  
-DIGITAL FILES ARE ISSUED FOR INFORMATION ONLY. CHANGES MUST NOT BE MADE TO DOCUMENTS WITHOUT ARCHITECTS CONSENT

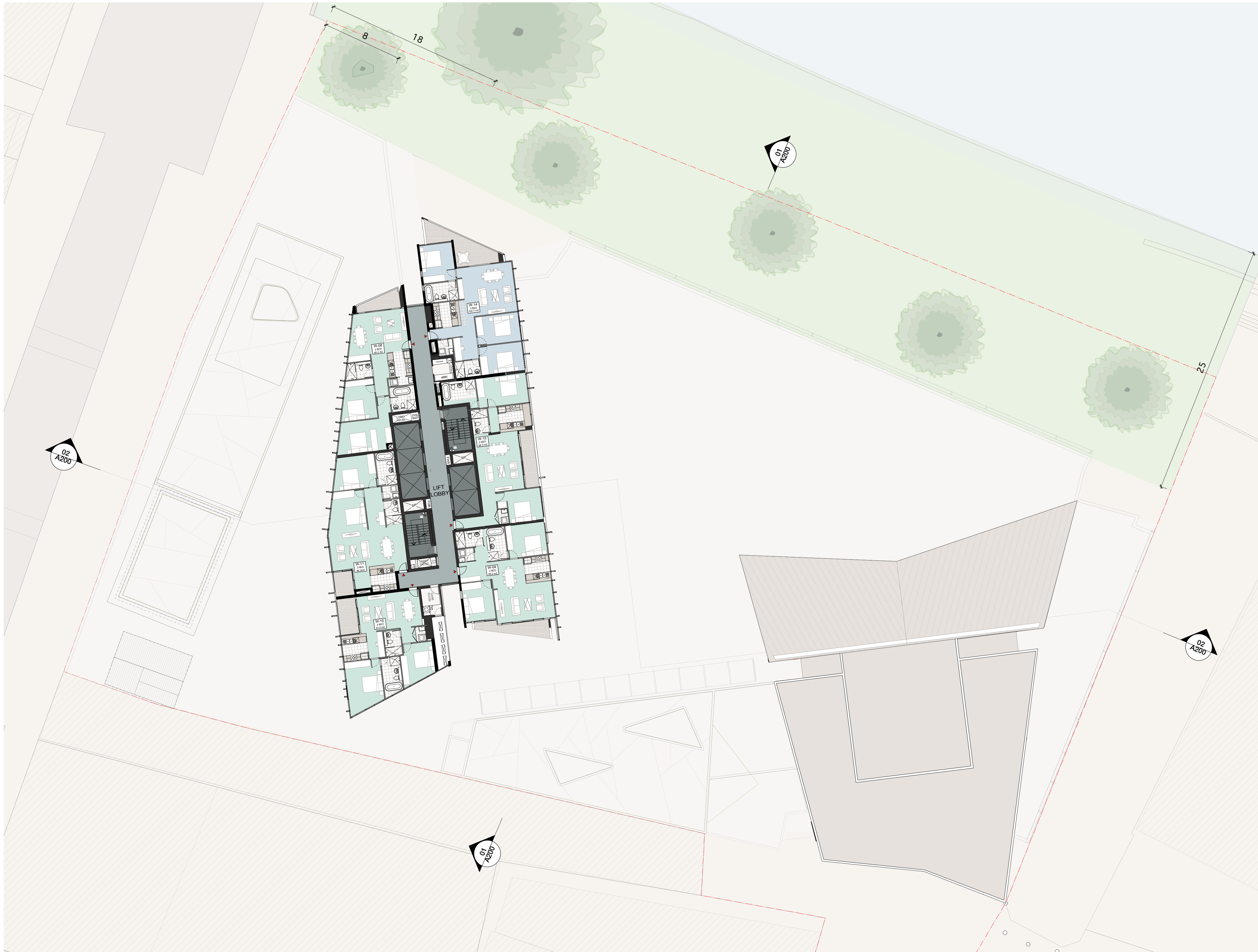
LEGEND - EXTERNAL FINISHES

AVB ALUMINIUM VERTICAL BLADE - VARYING DEPTHS (300, 450, 600mm)  
ALS ALUMINIUM SLIDING SCREENS  
BLC BALUSTRADE - GLASS  
BLC BALUSTRADE - CONCRETE WITH PAINTED FINISH OR SIMILAR  
BLM BALUSTRADE - METAL  
G\_1 GLAZING TYPE 1 - CLEAR  
G\_2 GLAZING TYPE 2 - TRANSLUCENT GLASS. COLOUR TBA  
G\_3 GLAZING TYPE 3 - OPAQUE FILM APPLIED. COLOUR TBA

PC\_1 PRECAST CONCRETE SPANDREL PANELS WITH PENETRATING PAINT FINISH OR SIMILAR  
PC\_2 SMOOTH PRECAST CONCRETE WITH PAINTED FINISH (LIGHT) OR SIMILAR  
PC\_3 SMOOTH PRECAST CONCRETE WITH PAINTED FINISH (DARK) OR SIMILAR  
PFC PAINTED FC CLADDING  
PFS PERFORATED METAL SCREEN

<div>TONY CARO ARCHITECTURE</div>	<div>DRAWING PREPARED FOR <b>MERITON</b> MERITON APARTMENTS LEVEL 11, MERITON TOWER 528 KENT STREET, SYDNEY</div>	<div>ISSUE REGISTER 5 17/01/13 Amended &amp; 75w Application 5 23/11/11 DA Issue - Additional Information 4 18/01/11 Revised for DA 3 28/01/11 Preliminary DA for review 2 28/01/11 TEST 1 28/01/11 PROGRESS MEETING</div>	<div>REVISION REGISTER By No Date Note</div>	<div>LEGEND By</div>	<div>KEY CONSULTANT INFO LANDSCAPE GUY STURT &amp; ASSOC GUY STURT 9211 3744 guy@sturtassociates.com.au STRUCTURAL MERITON GEOFF 9211 3744 guy@sturtassociates.com.au HYDRAULIC TBA TBA TBA</div>	<div>KEY CONSULTANT INFO BASIX EFFICIENT LIVING TRACEY COOLESTRACEY COOLES 9949 0332 trac@efficientliving.com.au SOLAR ACCESS HEGGIES NEHAD AL-KHALIDY 9427 8100 nehad.al-khalidy@heggies.com.au TRAFFIC TTPA ROSS NETTLE 0416 189 656 rtpa@tpa.com.au</div>	<div>GENERAL NOTES DO NOT SCALE OFF THIS DRAWING. USE FIGURED DIMENSIONS ONLY. VERIFY ALL DIMENSIONS ON SITE AND RESOLVE ANY DISCREPANCIES BEFORE PROCEEDING. COPYRIGHT OF THIS DRAWING AND THE DESIGNS EXECUTED REMAIN THE PROPERTY OF TONY CARO ARCHITECTURE. BUILDER TO EXAMINE SITE AND VERIFY SITE CONDITIONS PRIOR TO COMMENCING WORK. BUILDER TO CONFIRM BUILDING SETOUT PRIOR TO COMMENCING WORK. ALL ARCHITECTURAL DRAWINGS TO BE READ IN CONJUNCTION WITH OTHER ARCHITECTURAL DETAILS, SCHEDULES AND SPECIFICATIONS. ALL ARCHITECTURAL DRAWINGS AND DOCUMENTS TO BE READ IN CONJUNCTION WITH OTHER CONSULTANTS</div>	<div>DRAWINGS AND SPECIFICATIONS. BUILDER TO ALLOW FOR DEFLECTION TO ALL SLABS AS REQUIRED TO STRUCTURAL ENGINEERS SPECIFICATION. CAD DOCUMENTS ARE ISSUED FOR INFORMATION ONLY. CHANGES ARE NOT TO BE MADE TO ANY DOCUMENTATION WITHOUT THE ARCHITECTS WRITTEN APPROVAL. TCA TAKES NO RESPONSIBILITY FOR THE ELECTRONIC TRANSMISSION. DIMENSIONS OR ACCURACY OF THESE DRAWINGS. CEILING LEVEL AT NOMINATED DISTANCE FROM FINISHED FLOOR LEVEL. FOR ALL EXTERNAL LEVELS REFER TO LANDSCAPE ARCHITECTS DRAWINGS.</div>	<div>KEY PLAN / GENERAL INFO  REFERENCE SCALE 1:200 0 2 4 6 8 10</div>	<div>PROJECT <b>RIVERFRONT APARTMENTS</b> 330 CHURCH STREET PARRAMATTA NSW DRAWING NAME <b>Plan_Typical Tower Middle</b></div>	<div>SCALE 1:200 DWG DATE MAR 2011 PLOT DATE 10/5/13</div>	<div>PAGE SIZE A1 DRAWN BY JF REV ISSUE 6</div>	<div>STATUS PRELIMINARY APPR BY TC ISSUE 6</div>





01 PLAN - TYPICAL TOWER UPPER  
1:200 @ A1

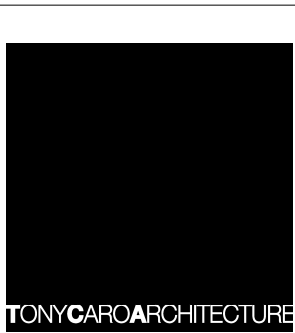
#### GENERAL LEGEND

-ALL ARCHITECTURAL DRAWINGS AND DOCUMENTS TO BE READ IN CONJUNCTION WITH OTHER CONSULTANTS DRAWINGS AND REPORTS  
-FOR ALL EXTERNAL LEVELS REFER LANDSCAPE DRAWINGS.  
-USE FIGURE DIMENSIONS ONLY - DO NOT SCALE FROM DRAWINGS. IF UNSURE, CONFIRM DIMENSION WITH ARCHITECT PRIOR TO PROCEEDING  
-COPYRIGHT TONY CARO ARCHITECTURE  
-DIGITAL FILES ARE ISSUED FOR INFORMATION ONLY. CHANGES MUST NOT BE MADE TO DOCUMENTS WITHOUT ARCHITECTS CONSENT

#### LEGEND - EXTERNAL FINISHES

AVB ALUMINIUM VERTICAL BLADE - VARYING DEPTHS (300, 450, 600mm)  
ALS ALUMINIUM SLIDING SCREENS  
BLC BALUSTRADE - GLASS  
BLM BALUSTRADE - METAL  
G\_1 GLAZING TYPE 1 - CLEAR  
G\_2 GLAZING TYPE 2 - TRANSLUCENT GLASS, COLOUR TBA  
G\_3 GLAZING TYPE 3 - OPAQUE FILM APPLIED, COLOUR TBA

PC\_1 PRECAST CONCRETE SPANDREL PANELS WITH PENETRATING PAINT FINISH OR SIMILAR  
PC\_2 SMOOTH PRECAST CONCRETE WITH PAINTED FINISH (LIGHT) OR SIMILAR  
PC\_3 SMOOTH PRECAST CONCRETE WITH PAINTED FINISH (DARK) OR SIMILAR  
PFC PAINTED FC CLADDING  
PFS PERFORATED METAL SCREEN



DRAWING PREPARED FOR:  
**MERITON**  
MERITON APARTMENTS  
LEVEL 11, MERITON TOWER  
528 KENT STREET, SYDNEY  
BY:  
TONY CARO ARCHITECTURE PTY LTD  
LEVEL 1, 2 GLEN ST MILSONS POINT  
NSW 2061 SYDNEY AUSTRALIA  
T 99649100 P 99649133  
WWW.TONYCAROARCHITECTURE.COM.AU

ISSUE REGISTER		REVISION REGISTER	
No	Date Note	By	No Date Note
5	17/01/13	Amended & 75w Application	JF
5	23/11/11	DA Issue - Additional Information	JF
4	18/01/11	Issued for DA	JF
3	28/01/11	Preliminary DA for review	JF
2	28/01/11	TEST	SA
1	28/01/11	PROGRESS MEETING	SA

REVISION REGISTER		LEGEND	
By	No Date Note	By	No Date Note

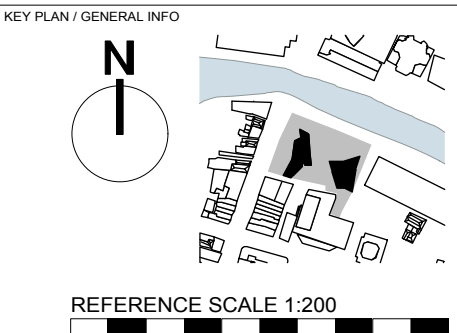
By

KEY CONSULTANT INFO	
LANDSCAPE	GUY STURT & ASSOC GUY STURT 9211 3744 guy@sturtassociates.com.au
STRUCTURAL	MERITON GEOFF 9211 3744 guy@sturtassociates.com.au
HYDRAULIC	TBA TBA TBA

KEY CONSULTANT INFO	
BASIX	EFFICIENT LIVING TRACEY COOLESTRACEY COOLES 9949 0332 tracey@efficientliving.com.au
SOLAR ACCESS	HEGGIES NEHAD AL-KHALIDY 9427 8100 nehad.al-khalidy@heggies.com.au
TRAFFIC	TTPA ROSS NETTLE 0416 189 656 ttpa@ttpa.com.au

GENERAL NOTES  
DO NOT SCALE OFF THIS DRAWING. USE FIGURED DIMENSIONS ONLY. VERIFY ALL DIMENSIONS ON SITE AND RESOLVE ANY DISCREPANCIES BEFORE PROCEEDING. COPYRIGHT OF THIS DRAWING AND THE DESIGNS EXECUTED REMAIN THE PROPERTY OF TONY CARO ARCHITECTURE. BUILDER TO EXAMINE SITE AND VERIFY SITE CONDITIONS PRIOR TO COMMENCING WORK. BUILDER TO CONFIRM BUILDING SETOUT PRIOR TO COMMENCING WORK. ALL ARCHITECTURAL DRAWINGS TO BE READ IN CONJUNCTION WITH OTHER ARCHITECTURAL DETAILS, SCHEDULES AND SPECIFICATIONS. ALL ARCHITECTURAL DRAWINGS AND DOCUMENTS TO BE READ IN CONJUNCTION WITH OTHER CONSULTANTS

DRAWINGS AND SPECIFICATIONS. BUILDER TO ALLOW FOR DEFLECTION TO ALL SLABS AS REQUIRED TO STRUCTURAL ENGINEERS SPECIFICATION. CAD DOCUMENTS ARE ISSUED FOR INFORMATION ONLY. CHANGES ARE NOT TO BE MADE TO ANY DOCUMENTATION WITHOUT THE ARCHITECTS WRITTEN APPROVAL. TCA TAKES NO RESPONSIBILITY FOR THE ELECTRONIC TRANSMISSION, DIMENSIONS OR ACCURACY OF THESE DRAWINGS. CEILING LEVEL AT NOMINATED DISTANCE FROM FINISHED FLOOR LEVEL. FOR ALL EXTERNAL LEVELS REFER TO LANDSCAPE ARCHITECTS DRAWINGS.



PROJECT  
**RIVERFRONT APARTMENTS**  
330 CHURCH STREET  
PARRAMATTA NSW  
DRAWING NAME  
**Plan\_Typical Tower Upper**

SCALE	PAGE SIZE	STATUS
1:200	A1	PRELIMINARY
DWG DATE MAR 2011	DRAWN BY JF	APPR BY TC
PLOT DATE 10/5/13	REV	ISSUE 6
DRAWING NUMBER		<b>A107</b>