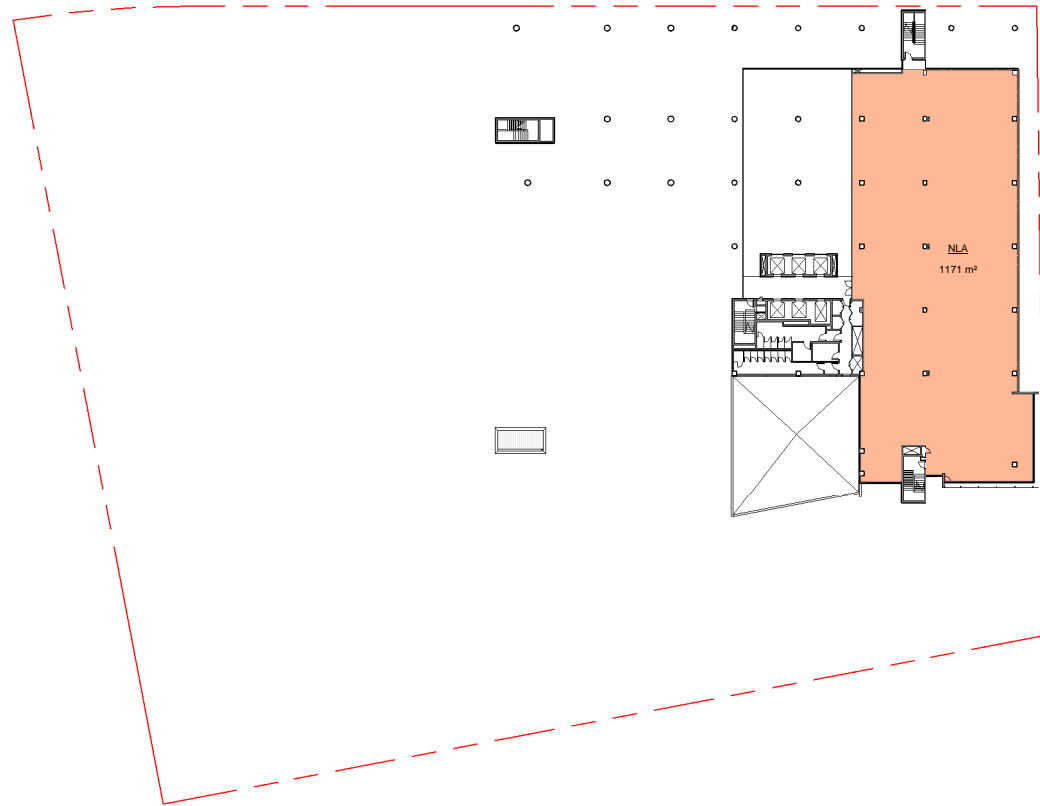
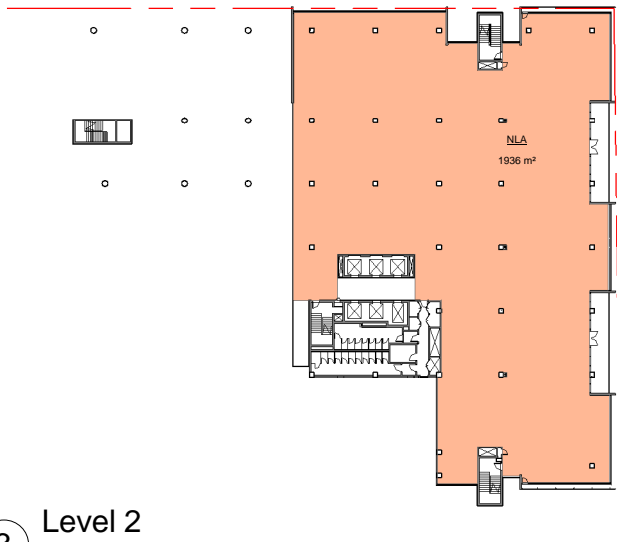


1 Ground Floor  
1 : 500



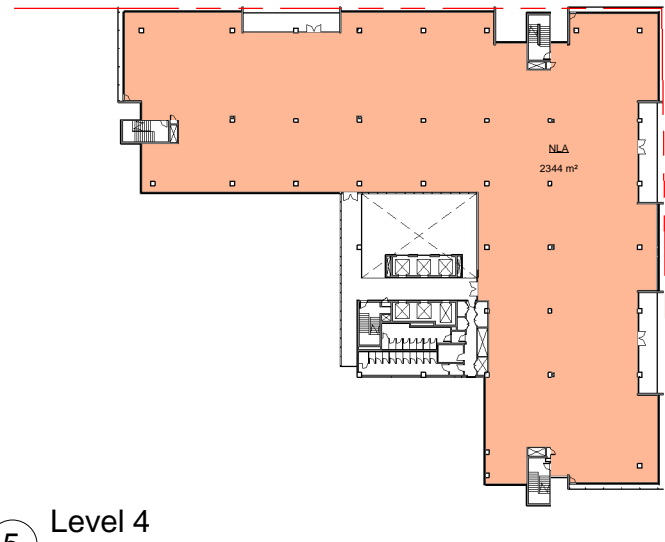
2 Level 1  
1 : 500



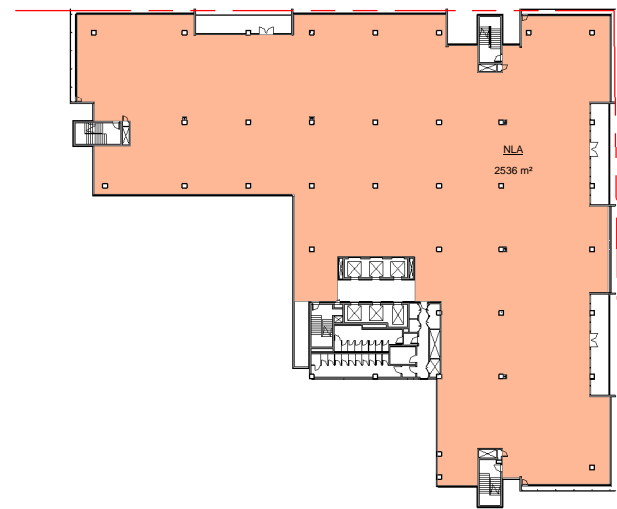
3 Level 2  
1 : 500



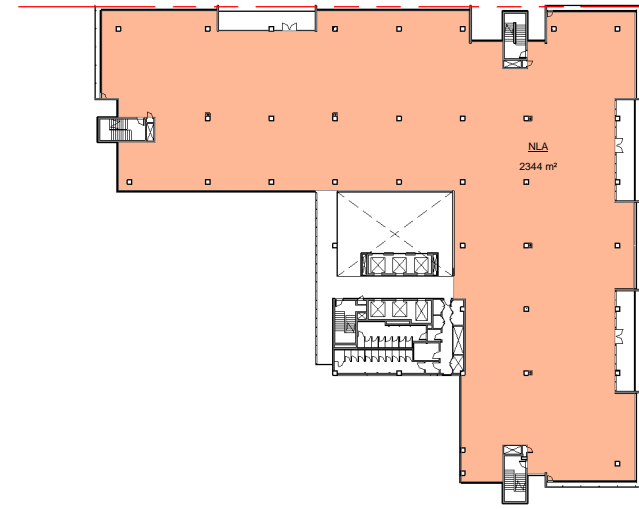
4 Level 3  
1 : 500



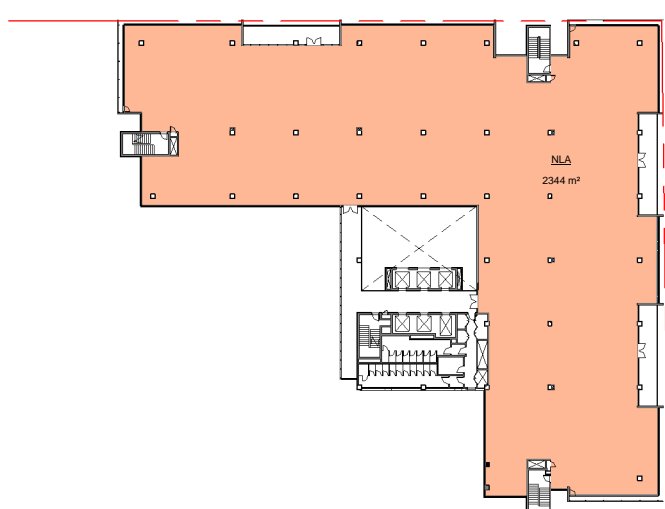
5 Level 4  
1 : 500



6 Level 5  
1 : 500



7 Level 6  
1 : 500



8 Level 7  
1 : 500

©architectus Sydney 2012

Architectus Sydney Pty Ltd is the owner of the copyright subsisting in these drawings, plans, designs and specifications. They must not be used, reproduced or copied, in whole or in part, nor may the information, ideas and concepts therein be disclosed to any person without the prior written consent of that company.



Do not scale drawings. Verify all dimensions on site

issue	amendment	date
A	Issue for DOP1 Submission	20.06.2013

Area Schedule (NLA)	
GROUND FLOOR	701 m²
LEVEL 1	1171 m²
LEVEL 2	1936 m²
LEVEL 3	2344 m²
LEVEL 4	2344 m²
LEVEL 5	2536 m²
LEVEL 6	2344 m²
LEVEL 7	2344 m²
Grand total	15720 m²



architectus™

Architectus Sydney  
Level 3 341 George Street  
Sydney NSW 2000  
T (61 2) 8252 8400  
F (61 2) 8252 8800  
sydney@architectus.com.au  
ABN 11 098 489 448

project 6 Australia Avenue  
Sydney Olympic Park

drawing

NLA PLANS

scale	1 : 500 at A1	status	drawing no.
drawn	Author	checked	DA-S75-0006
checked	Checker	issue	
project no	090086		A

28/06/2013 5:21:20 PM