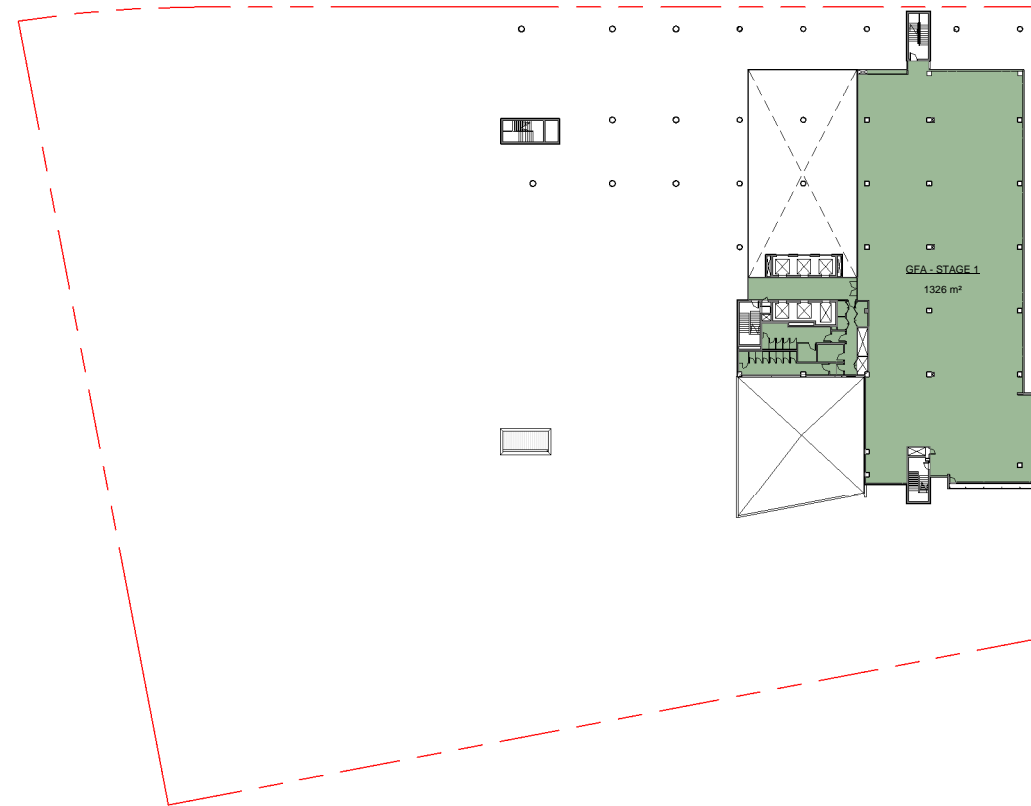
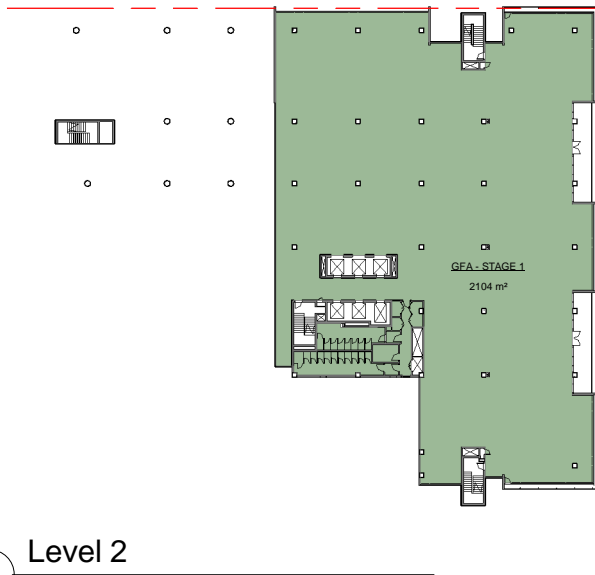


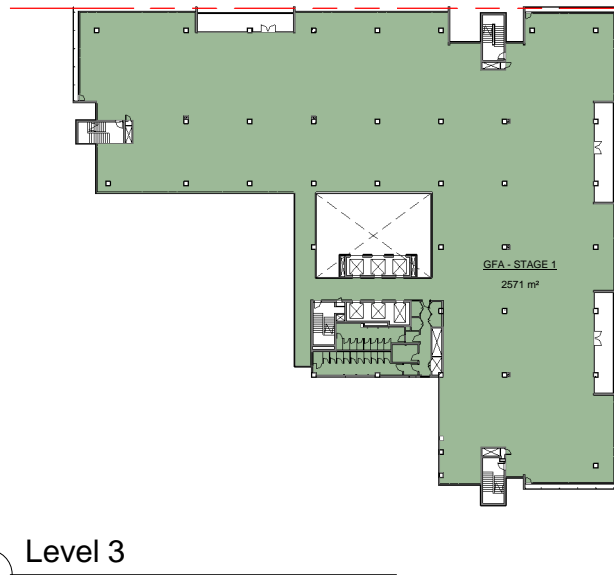
1 Ground Floor
1 : 500



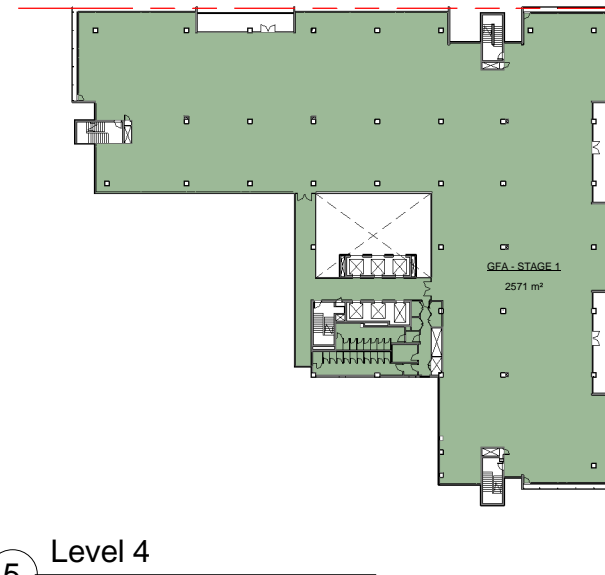
2 Level 1
1 : 500



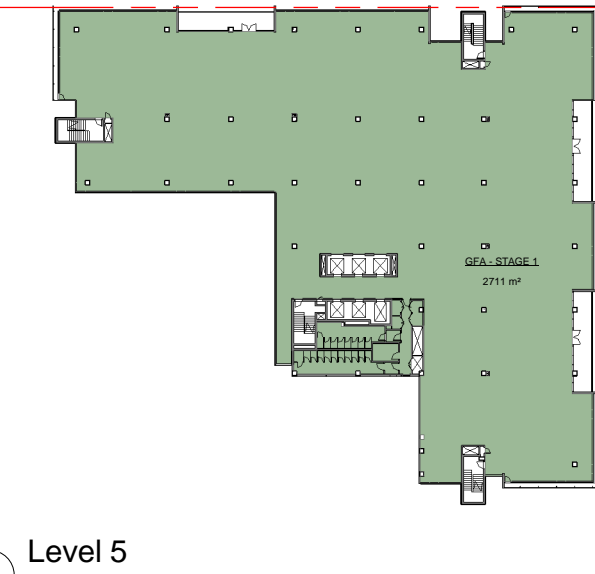
3 Level 2
1 : 500



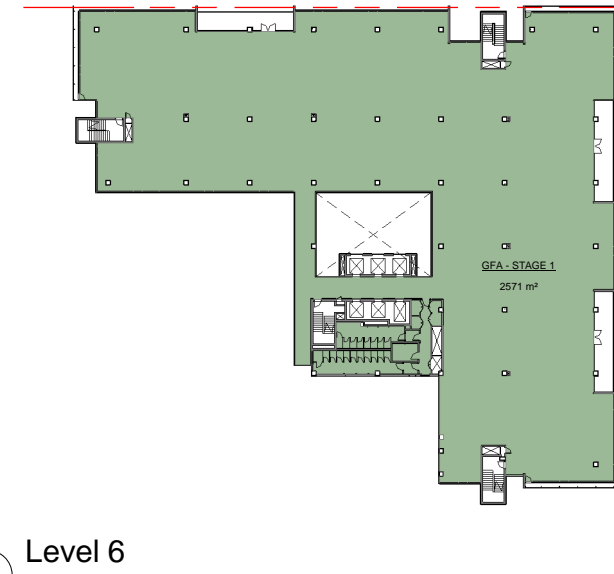
4 Level 3
1 : 500



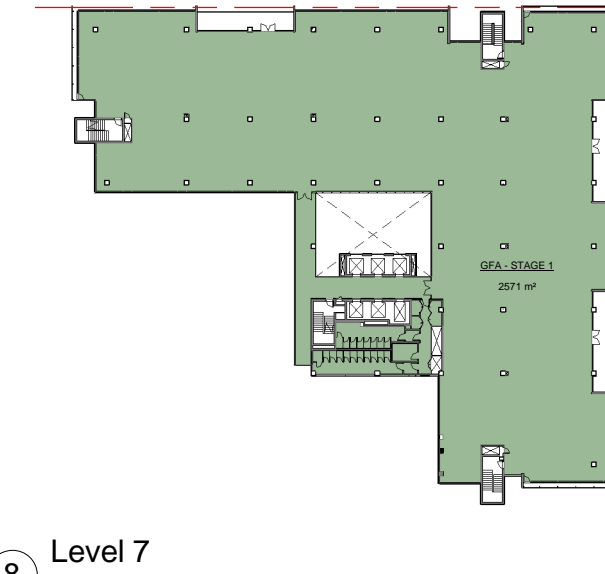
5 Level 4
1 : 500



6 Level 5
1 : 500



7 Level 6
1 : 500



8 Level 7
1 : 500

©architectus Sydney 2012

Architectus Sydney Pty Ltd is the owner of the copyright subsisting in these drawings, plans, designs and specifications. They must not be used, reproduced or copied, in whole or in part, nor may the information, ideas and concepts therein contained (which are confidential to Architectus Sydney Pty Ltd) be disclosed to any person without the prior written consent of that company.



Do not scale drawings. Verify all dimensions on site

| issue | amendment | date |
|-------|---------------------------|------------|
| A | Issue for DOPI Submission | 20.06.2013 |
| | | |
| | | |
| | | |
| | | |
| | | |
| | | |
| | | |
| | | |
| | | |

| Area Schedule (GFA) | |
|---------------------|----------|
| GROUND FLOOR | 1181 m² |
| LEVEL 1 | 1326 m² |
| LEVEL 2 | 2104 m² |
| LEVEL 3 | 2571 m² |
| LEVEL 4 | 2571 m² |
| LEVEL 5 | 2711 m² |
| LEVEL 6 | 2571 m² |
| LEVEL 7 | 2571 m² |
| Grand total | 17605 m² |



architectus™

Architectus Sydney
Level 3 341 George Street
Sydney NSW 2000
T (61 2) 8252 8400
F (61 2) 8252 8800
sydney@architectus.com.au
ABN 11 098 489 448

project 6 Australia Avenue
Sydney Olympic Park

drawing

GFA PLANS

| | | | |
|------------|---------------|-------------|-------------|
| scale | 1 : 500 at A1 | status | drawing no. |
| drawn | Author | DA-S75-0005 | |
| checked | Checker | issue | |
| project no | 090086 | | A |

28/06/2013 5:20:59 PM