

The Secretary  
Department of Planning and Environment  
Level 22, 320 Pitt Street  
Sydney NSW 2000

08 September 2017

Attention: Mike Young/Nicole Brewer

Dear Secretary,

**White Rock Wind Farm – Part 3A Project Approval MP10\_0160**  
**Modification Application 4A - Subdivision approval for 330 kV and 132kV substation sites**

**1. Purpose of this letter**

White Rock Wind Farm Pty Ltd (**WRFPL**) is the proponent of the White Rock Wind Farm (**WRWF**). The construction and operation of the WRWF is authorised under Project Approval MP10\_0160 granted by the Minister for Planning on 10 July 2012 (**Project Approval**) under Part 3A of the *Environmental Planning and Assessment Act 1979* (**EP&A Act**). The Project Approval has been modified on 3 occasions (most recently on 31 May 2017).

The purpose of this letter is to request the Minister to modify the Project Approval under section 75W of the EP&A Act (which continues to apply to 'transitional Part 3A projects' by virtue of clause 12 of Schedule 6A to the EP&A Act). WRFPL seeks subdivision approval in respect of the lands on which a 330kV and 132kV substation are located.

Figure 1 (attached) shows the layout of the WRWF Project including the two substation locations (labelled on the figure), one is an existing (Stage 1) 33kV/132kV substation south of White Rock Mountain and the second is a proposed (Stage 2) 132kV/330kV substation adjacent the 330kV transmission line shown towards the left hand side of Figure 1.

Given the nature of the proposed modification, WRFPL anticipates that it may be determined as an 'administrative' modification. All impacts associated with these two substation locations have been assessed in the EA for the Project Approval, as modified.

**2. Background**

Construction of Stage 1 of the WRWF commenced in May 2016 and operation is scheduled to commence in the latter half of 2017. Stage 1 has been connected to the existing 132kV Glen Innes to Inverell transmission line via a 132kV/33kV substation located south of White Rock Mountain and on Lot 153/DP 753260. That grid connection currently has capacity for the connection of Stage 1 only. Transgrid will own the 132kV substation and requires subdivision of the associated land.

To enable the development of Stage 2 of the WRWF, WRFPL sought to modify the Project Approval by seeking approval for an alternative grid connection (Modification Application 4) comprising development of an additional 13 km of overhead 132 kV transmission line and a 132 kV/330 kV substation, to connect WRWF to the existing 330 kV transmission network. Mod 4 was approved by the Minister on 31 May 2017. Transgrid will own the 330kV substation and will require subdivision of the land on which the substation is located.

### 3. Proposed modification and justification

WRWFPL anticipates that the respective substations and the substation sites will be dedicated to TransGrid. WRWFPL now seeks a modified approval allowing for the subdivision of the two substation sites:

- to allow separate lots to be created for the respective substation sites; or
- to enable the registration of long term leases over the respective substation sites.

The required subdivisions are for:

- Land on which the proposed WRWF 330kV/132kV substation will be located, being Lot 1 in DP 624913 (**330 kV Substation Site**) (Figure 2); and
- Land on which the WRWF Stage 1 132kV/33kV substation is located, being Lot 153/DP 753260 (**132 kV Substation Site**) (Figure 3).

The location of the substation sites for which subdivision approval is sought are shown in the attached Figures 2 and 3 and zoning and land title details shown in Table 1. Both substation sites where subdivision is sought are within Inverell Local Government Area.

**Table 1 – Details of Lots to be created by subdivision**

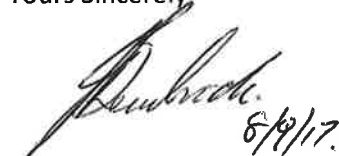
Figure	Lot	DP	Zone	Minimum Lot Size	Proposed Lot Size	Purpose
2	1	624913	RU1	200 ha	4 ha	330 kV Substation
3	153	753260	RU1	200 ha	1.441 ha	132 kV Substation

The subdivision to create lots of the size indicated in Table 1 is inconsistent with minimum lot sizes defined under the Inverell LEP 2012 however, approval is sought under Part 3A of the EP& Act. As indicated above, WRWFPL anticipates that the proposal could be dealt with as an 'administrative' modification.

As required, a Political Donations Disclosure Statement accompanies this application.

Should you have any questions in relation to this matter, please do not hesitate to contact Jeff Bembrick by email [jeffbembrick@goldwindaustralia.com](mailto:jeffbembrick@goldwindaustralia.com) or mobile phone: 0499 156 665.

Yours Sincerely



Jeff Bembrick

Goldwind, Development Compliance Manager on behalf of White Rock Wind Farm Pty Ltd

### Attachments

Figure 1 – Map showing WRWF project area and the location of the two substations

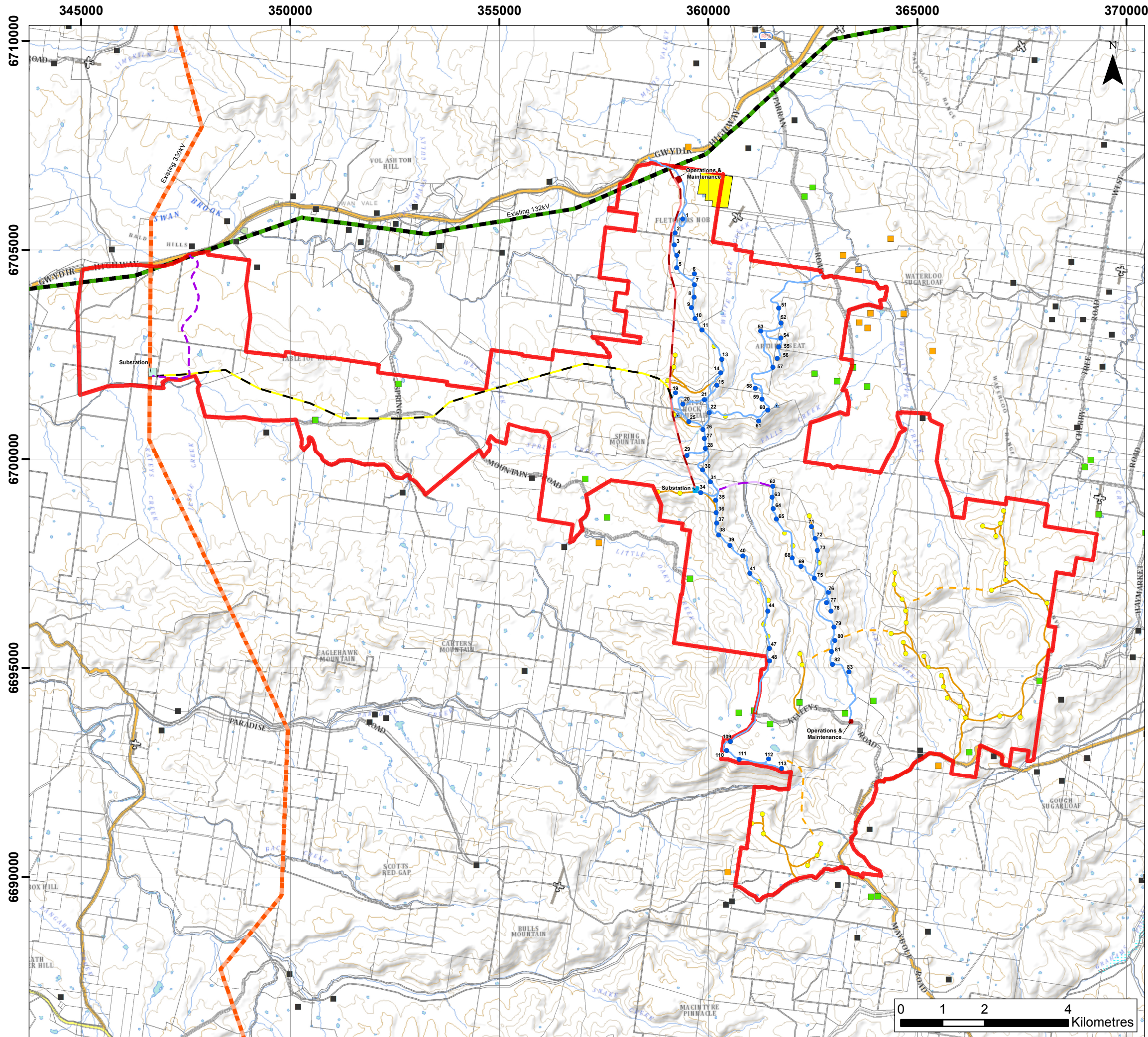
Figure 2 - Map showing indicative 330 kV substation site, Lot 1/DP 624913 proposed for subdivision

Figure 3 – Map showing 132 kV substation site on Lot 153/DP 753260 proposed for subdivision

**Figure 1**

**Map showing WRWF project area and 33kV/132kV and 132kV/330kV substation locations**





PROJECT

White Rock Wind Farm

TITLE

Site Layout Plan

LEGEND

White Rock Wind Farm Boundary

White Rock Solar Project Area

Cadastral Boundary

Transgrid 132kV Power Line

Transgrid 330kV Power Line

Residence

Associated Landowner

Associated Neighbour

Non-Associated

MOD4 Infrastructure

Substation Access Track

Substation (132kV / 330kV)

Alternate 132kV Overhead Line

MOD3 Stage 1 Infrastructure

Turbine Layout (x70)

Access Tracks

Permanent Met Mast

Substation / Switchyard (33kV / 132kV)

132kV Overhead Line

33kV Overhead Line

Operation & Maintenance Facility

Stage 2 Infrastructure

Approved Turbine Layout (x49)

Approved Access Track

33kV Overhead Line

LOCATION PLAN

WHITE ROCK

Wind Farm

White Rock Wind Farm Pty Ltd

Disclaimer:

Goldwind Australia gives no warranty in relation to the data (including accuracy, reliability, completeness or suitability) and accepts no liability for any loss, damage or costs (including consequential damage) relating to any use of the data in this map.

Datasets: LPI NSW

Projection: GDA94 MGA56

DATE

24/05/2017

SCALE

@A3: 1:90,000

CHECKED

J.Bembrick

STATUS

DRAFT

PRODUCED

I.Mackey

APPROVED

A.Maddocks

DRAWING No.

WRWF\_MOD4\_001\_1B

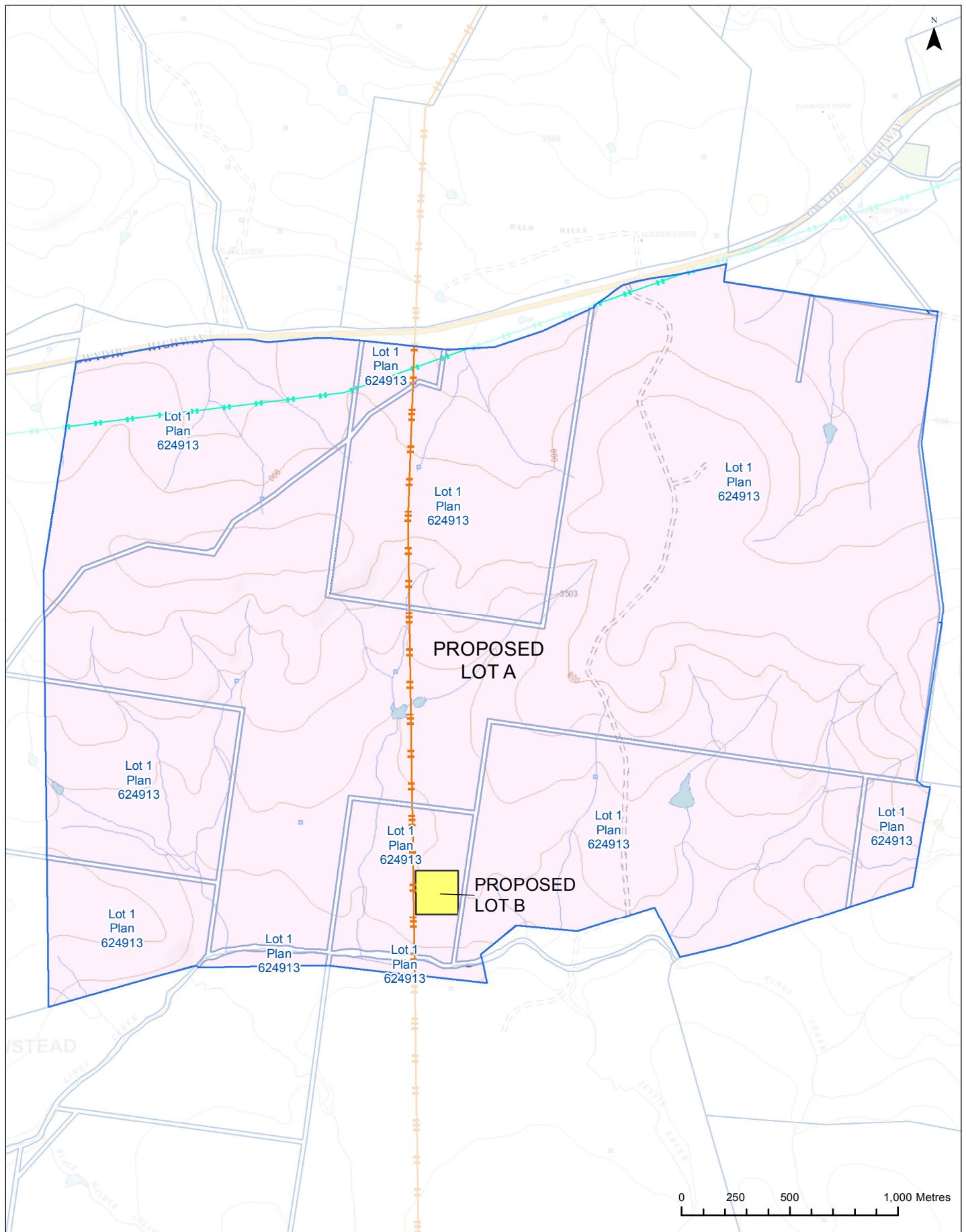
REV

01B



**Figure 2**

**Map showing indicative 330 kV substation site proposed for subdivision**



• LEGEND

- Proposed Lot A
- Proposed Lot B (330kV Substation Site)
- Existing 330kv Transmission Line DP 100194
- Existing 132kv Transmission Line DP 1134513

• PROJECT

White Rock Wind Farm - Stage 2

• TITLE

Subdivision - Lot 1/DP624913  
330kV Substation Site

• LANDOWNER

Paraway Pastoral Company Pty Ltd

• DATE

15/09/2017

• DRAWING No.

Paraway\_Indicative\_Map2\_Ver4

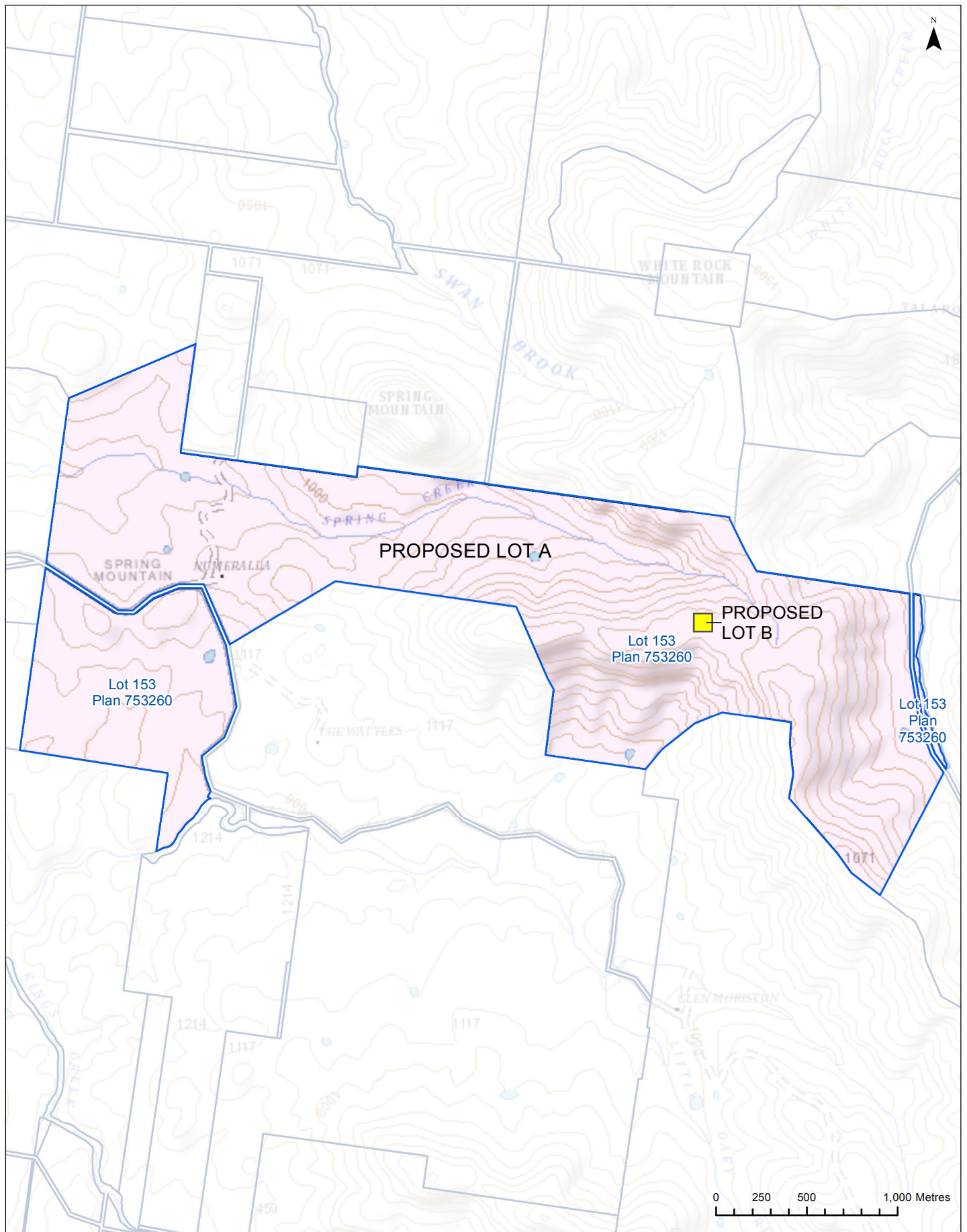
• REV

4



**Figure 3**

**Map showing indicative 132 kV substation site proposed for subdivision**



• LEGEND

- Proposed Lot A
- Proposed Lot B  
(132kV Substation Site)

• PROJECT

White Rock Wind Farm - Stage 1

• TITLE

Subdivision - Lot 153/DP753260  
132kV Substation Site

• LANDOWNER

John Wood

• DATE

15/09/2017

• DRAWING No.

John\_Wood\_SubstationLocation\_Ver2

• REV

2