



22 May 2017

Tim Stuckey
Department of Planning and Environment
GPO Box 39
Sydney, NSW 2001

BY EMAIL: tim.stuckey@planning.nsw.gov.au
(cc: phillipa.duncan@planning.nsw.gov.au)

Dear Tim

**Bodangora Wind Farm
Pty Limited**
Level 22, 56 Pitt Street
Sydney NSW 2000
Australia
T +61 2 8031 9900
F +61 2 9247 6086
www.infigenenergy.com

Bodangora Wind Farm (MP 10_0157) – Minor Modification relating to micrositeing – Clarification

Thank you for your phone call regarding clarifications to the Bodangora Wind Farm minor modification lodged on 19th May 2017. Please find information relating to the clarification below.

1. Wind turbine generator numbering

The numbering of the wind turbines contained in the minor modification have been revised since the original planning application in 2012.

The wind turbines were originally numbered based on a 46 wind turbine layout in the early stages of project design and development. Since then, several changes have been made to the design based on environmental and technical information and wind turbine numbers have reduced from 46 to 33.

As a result the numbering system of the 33 turbine project layout was potentially confusing as the numbering system was not consecutive.

During the detailed design process which has taken place over the last couple of months, the turbines in the wind farm were renumbered from 1 to 33 in clusters from west to east. This logical form of numbering will aid the design, construction and operation of the wind farm.

A full list of revised wind turbine numbers and their corresponding original number is provided in Table 1 below.

2. Grid coordinate inaccuracies

Inaccurate grid coordinates were provided in Section 2 and 3 of the minor modification letter. This was due to an error when copying the information from another document. The original and proposed turbine locations for turbine number 28 and number 31 are included in Table 1.

3. Project layout

Please find the Bodangora Wind Farm project layout attached.

Yours sincerely,

A handwritten signature in black ink, appearing to read "F J Boland".

Frank Boland
Development Team Leader

Ph: 02 8031 9914

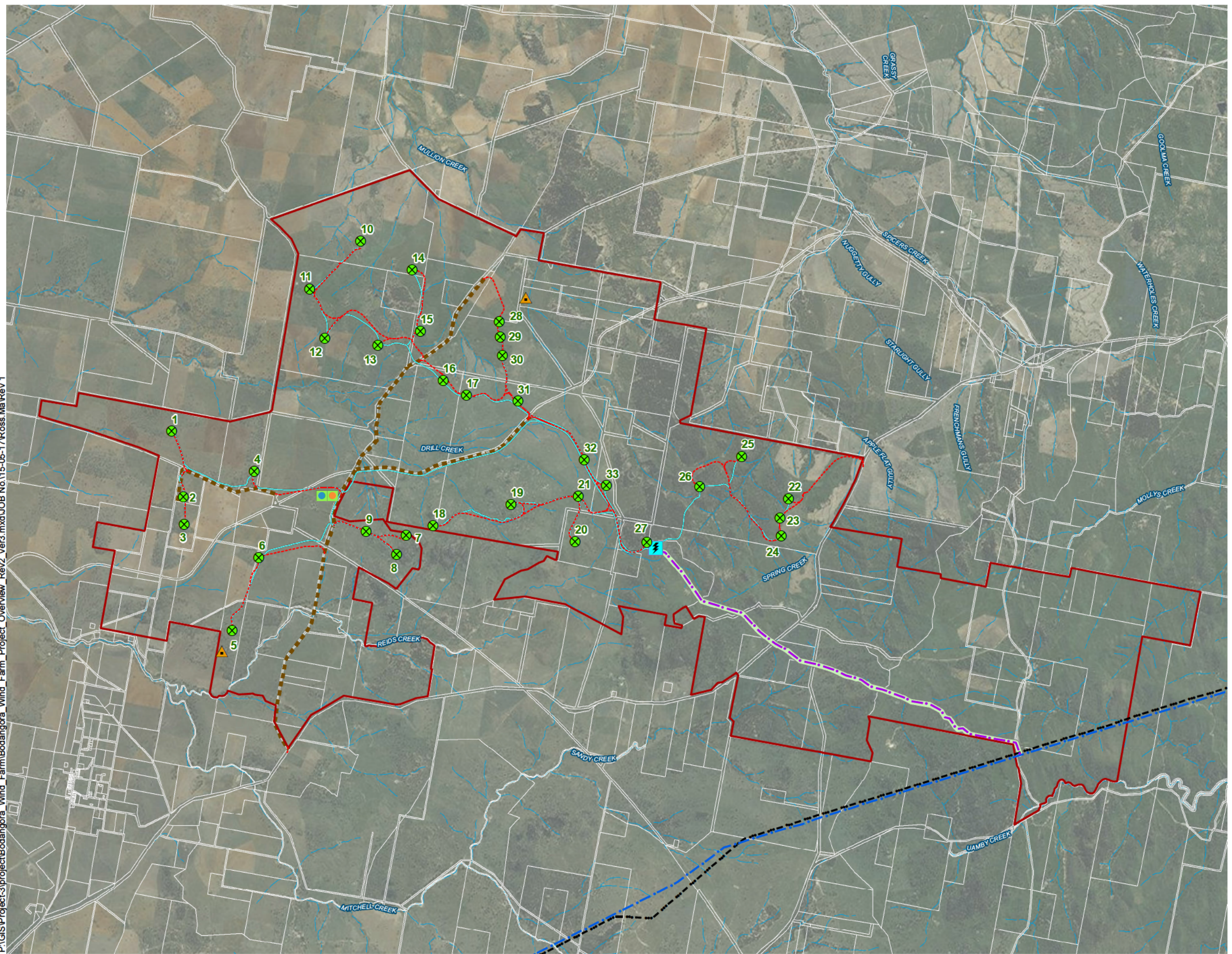
Mob: 0423 778 125

Appendix A	Turbine number and location
Appendix B	Project Layout Map

Appendix A Turbine number and location

Turbine Number		Turbine Locations			
Development Approval	Revised	Development Approval		Proposed	
WTG-46	1	689376	689446.9		
WTG-45	2	689646	689657.2		
WTG-44	3	689673	689694.4		
WTG-42	4	690833	690832.2		
WTG-43	5	690466	690487.1		
WTG-10	6	690990	690973		
WTG-34	7	693346	693332.3		
WTG-35	8	693193	693142		
WTG-37	9	692599	692673.6		
WTG-38	10	692599	692584.8		
WTG-41	11	691672	691755.4		
WTG-39	12	691963	692003.1		
WTG-36	13	692829	692897		
WTG-32	14	693448	693406		
WTG-33	15	693423	693522		
WTG-31	16	694025	694006.4		
WTG-29	17	694275	694299.6		
WTG-30	18	693700	693797		
WTG-24	19	695086	695068		
WTG-23	20	696086	696146.8		
WTG-22	21	696260	696199		
WTG-17	22	699713	699648.6		
WTG-19	23	699518	699530.8		
WTG-18	24	699560	699511.4		
WTG-13	25	698831	698888		
WTG-12	26	698211	698210.4		
WTG-16	27	697255	697305		
WTG-25	28	694977	694894	6415404	6415650
WTG-27	29	694935	694911.6		
WTG-26	30	694944	694906.7		
WTG-15	31	695291	695125	6414088	6414133
WTG-21	32	696262	696303		
WTG-20	33	696649	696639.3		

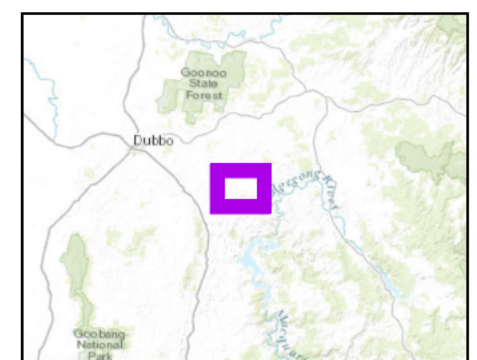
P:\GIS\Project3\projectBodangora_Wind_Farm\Project Overview_Rev2.mxd\JOB No.15-05-17\Ross.Ma\Rev 1



Legend

- Wind Turbine Layout
- Met Masts
- Substation
- O&M Facility
- Site Compound
- Existing 132kV Line
- Existing 330kV Line
- Cabling
- 132kV Line
- 132kV Line 100m Route Corridor
- Access Track
- Road Upgrade
- Waterways
- Project Area
- Cadastre

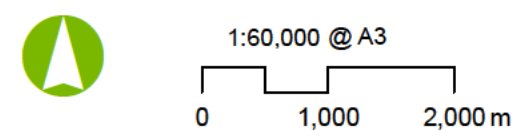
Source: Aurecon, Infigen, LPI
Service Layer Credits: Sources: Esri, HERE, DeLorme, Intermap, increment P Corp., GEBCO, USGS, FAO, NPS,





Aurecon Australia Pty Ltd
Level 2, 116 Military Road
(PO Box 538)
Neutral Bay NSW 2089, Australia
Telephone: +61 2 9465 5599
Facsimile: +61 2 9465 5598
Email: sydney@aurecongroup.com

A person using Aurecon drawings and other data accepts the risk of:
1. using the drawings and other data in electronic form without requesting and checking them for accuracy against the original hard copy versions;
2. using the drawings or other data for any purpose not agreed to in writing by Aurecon.



Projection: GDA 1994 MGA Zone 55