



19 May 2017

Phillipa Duncan
Department of Planning and Environment
GPO Box 39
Sydney, NSW 2001

BY EMAIL: phillipa.duncan@planning.nsw.gov.au
(cc: tim.stuckey@planning.nsw.gov.au)

Dear Phillipa,

**Bodangora Wind Farm
Pty Limited**
Level 22, 56 Pitt Street
Sydney NSW 2000
Australia
T +61 2 8031 9900
F +61 2 9247 6086
www.infigenenergy.com

Bodangora Wind Farm (MP 10_0157) – Minor Modification relating to micro-siting

Thank you for your time at the meeting on 20th April 2017 to discuss the next phase of the Bodangora Wind Farm project. We will continue to communicate to the Secretary of the Department as we satisfy each of the required Conditions of Consent.

Ahead of providing confirmation on the final layout co-ordinates, we wanted to follow-up on our discussion to outline three minor changes outside of the current micro-siting limitation of 100 metres (m). We understand from subsequent discussions that this will require a minor modification from the Department. Please consider this letter as Bodangora Wind Farm Pty Ltd's (BWF) request for the minor modification.

1. Track between wind turbine generator (WTG) 26 and 25

Change requested

BWF is requesting to diverge out of the 100m micro-siting limit of the track connecting turbine 25 and 26. The change is to allow the revised track alignment to avoid the native vegetation. This is shown on Figure 1 below

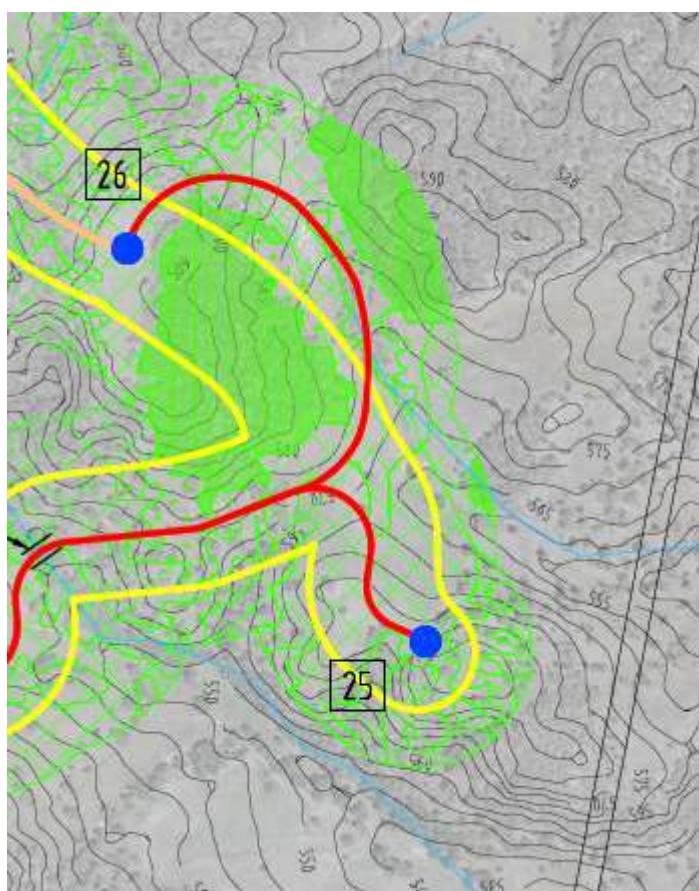


Fig. 1. Extract of layout showing track (red line) diverging out of the 100m yellow corridor to avoid the native vegetation (solid green area).

Justification

Under Condition E.21(f) BWF is required to minimise its impact on native vegetation. Following the base line vegetation mapping exercise which was inserted as a condition during Modification 2, as shown in Fig 1, it was identified that there was a section of vegetation that was classified as native vegetation. Within the 100m limitation it was not possible to avoid this cluster of vegetation without going outside of the 100m buffer. In keeping with the principle of minimizing native vegetation clearing we are proposing to reroute the track outside of the currently approved corridor by around 50m in the worst case which will minimise the removal of approximately 0.192ha of native vegetation.

2. WTG 28

Change requested

BWF is seeking to shift turbine 28 to the south of the approved allowance by an additional 159m, which moves this turbine location outside of the micro-siting limit of 100m currently permitted under the approved development application. The revised co-ordinates are shown below and an aerial image is also included in Figure 2.

| Approved DA Layout | Change Requested |
|--------------------|------------------|
| E694977 | E694977 |
| N6415650 | N6415650 |



Fig.2. Aerial image showing approved and proposed turbine location for turbine 28

Justification

The primary reason for this proposed shift is to be further away from the landowner residence (residence #4). With the project now advancing and following pre-construction consultation, the landowner asked whether the turbine could be shifted to the location proposed above. BWF is eager to accommodate the request given that we intend to be the long term owner of the project and wish to ensure the landowner is comfortable with the location given it will be there for the next 25 years. The new location is a further 159m away towards the centre of the project and is also on the southern side of a small hill.

Environmental considerations

Flora and Fauna

The detailed baseline vegetation mapping undertaken by NGH Environmental, determined that this revised location is of the same vegetation classification as was previously approved. A site visit was conducted by Kevin Mills to verify these results. As such no significant impacts to flora and fauna additional to those assessed for the original location of turbine 28 are anticipated.

Noise

With the new wind turbine being further away from all residences, the overall noise impact will be lower and as such is unlikely to impact on the ability to comply with the noise related conditions of approval.

Visual amenity

It is unlikely that there will be a noticeable difference from a visual amenity perspective as the closest non associated dwellings to the wind farm is located over 2 km away. With the turbine moving over a small hill into the centre of the wind farm, it is likely that the visual amenity from the nearest residences will be reduced.

Conclusion

Moving turbine 28 by an additional 159m south of the approved allowance is unlikely to cause impacts additional to those assessed for the approved location.

3. WTG 31

Change requested

BWF is seeking to shift wind turbine #31 to the west of the approved location by an additional 72m than is currently permitted under the approved development application. The revised co-ordinates are shown below and an aerial image is also included.

| Approved DA Layout | Change Requested |
|--------------------|------------------|
| E695125 | E695291 |
| N6414088 | N6414133 |

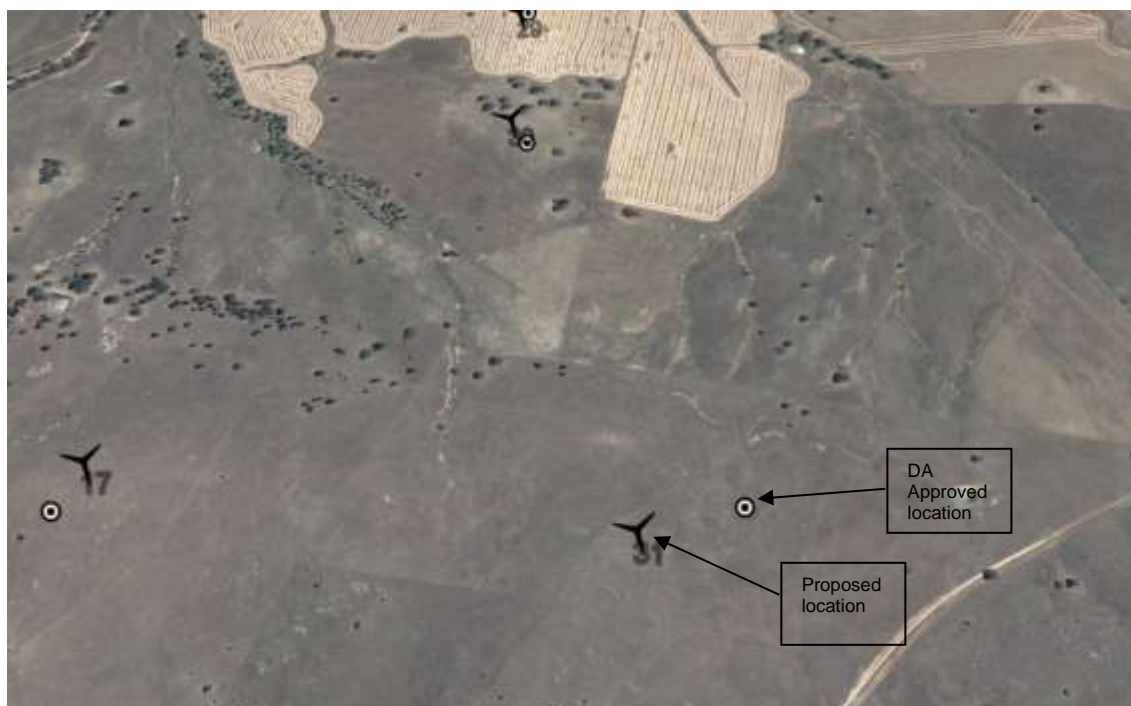


Fig.3. Aerial image showing approved and proposed turbine location for turbine 31

Justification

The primary reason for this proposed shift is due to terrain and access. With the more onerous conditions relating to the crossing of the Sandy Hollow Railway corridor, we are now required to have a formal crossing approved by Transport NSW. To reduce the amount of access track and to ensure the track is perpendicular with the crossing it is of benefit to shift the turbine location further west. The revised location is also at a slightly higher elevation which improves the yield of the turbine and shortens the distance of the tracks between turbines.

Environmental considerations

Flora and Fauna

The detailed vegetation mapping undertaken by NGH Environmental determined that this revised location is of the same vegetation classification and this was also verified during a site visit by Kevin Mills. As such no significant impacts to flora and fauna additional to those assessed for the original location of turbine 31 are anticipated.

Noise

With the new wind turbine being further away from all residences, the overall noise impact will be lower, and as such is unlikely to impact on the ability to comply with the noise related conditions of approval.

Visual amenity

There is not expected to be any noticeable difference from a visual amenity perspective given that the closest non associated dwellings to the wind farm is located over 2 km away. With the turbine moving further into the centre of the wind farm, it is likely that the visual amenity from the nearest residences will be reduced.



Conclusion

Moving turbine 31 by an additional 72m west of the approved allowance is unlikely to cause impacts additional to those assessed for the approved location.

Please contact me if you have any questions or clarifications. We look forward to your confirmation and we will continue to prepare all pre-construction approvals. Once confirmed we will also process the fee required to process this modification.

Yours sincerely,

A handwritten signature in black ink, appearing to read "F J Boland". The signature is written in a cursive, slightly slanted style.

Frank Boland
Development Team Leader

Ph: 02 8031 9914

Mob: 0423 778 125