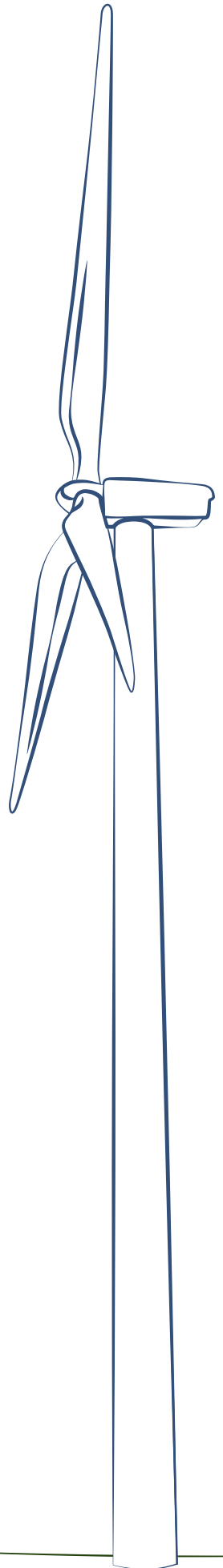


# Attachment E

## Consultation Documents



This page intentionally blank.

## INDEX OF CONSULTATION DOCUMENTS.

---

### Media Coverage:

- Daily Liberal, 25 August 2011;
- Wellington Times, 26 August 2011;
- Wellington Times, 29 August 2011;
- Wellington Times, 31 August 2011;
- Windfarm Windfall, 5 September 2011;
- Consultation Summary;

### Sent Documents:

- Letter to Aerial Agricultural Association of Australia, 23 August 2011;
- Letter to Airservices Australia, 23 August 2011;
- Letter to Civil Aviation Safety Authority, 23 August 2011;
- Letter to Central West Catchment Management Authority, 23 August 2011;
- Letter to Department of Environment, Climate Change and Water , 23 August 2011;
- Letter to Department of Defence, 23 August 2011;
- Letter to Investment and Industry, 23 August 2011;
- Letter to Land and Property Management Authority, 23 August 2011;
- Letter to NSW Office of Water, 23 August 2011;
- Letter to NSW Rural Fire Service, 23 August 2011;
- Letter to Wellington Council, 23 August 2011;
- Email to Goldfields Australasia Pty Ltd, 13 December 2011;
- Email to Clancy Exploration Ltd; 9 December, 2011;
- Email to Windora Exploration Pty Ltd, 7 December 2011

Received Documents:

- Letter from Department of Environment, Climate Change and Water, dated 13 September 2011;
- Letter from Land and Property Management Authority, dated 7 September 2011;
- Letter from Copper Strike Limited, dated 7 September 2011;
- Letter from Civil Aviation Safety Authority, dated 2 September 2011; and
- Letter from Central West Catchment Management Authority, dated 13 September 2011.



**Dubbo Photo News**  
**25-Aug-2011**  
**Page: 8**  
**General News**  
**Market: Dubbo**  
**Circulation: 12000**  
**Type: Regional**  
**Size: 266.50 sq.cms**  
**Frequency: ---T---**

We ask two Dubbo people from two different generations for their views on this week's topic

# The proposed wind farm near Wellington



**Name:** Stuart Ormsby

**Age:** 18

**Do you believe Dubbo could support a wind farm?**

Possibly - it depends on whether there are enough areas of high wind - there might be a few spots.

**Is alternative energy something that you support?**

It has to be cost-effective. The more wind, the better and it's something you can do. The less money spent (by the government) on fixing monetary problems, those dollars could be spent on alternative energy and making Australia more independent.

**What do you see as the possible benefit or detriment for the community?**

Wind farms could be beneficial, solar power is mainly used and can also mean more jobs. In Australia, we can use solar power and water, but not geothermal energy. Dubbo needs to grab some form of alternative energy - even China is getting ahead of us.



**Name:** Darryl Knowing

**Age:** 62

**Do you believe Dubbo could support a wind farm?**

A wind farm is a good idea because you're not relying on natural resources like coal. Wind is free and it's a cleaner energy source.

**Is alternative energy something that you support?**

It would be a cheaper alternative but it also depends on the location where it would be. If there are people that don't want it because it creates noise then it becomes a problem. If there was a suitable location, it would be fine - as long as the local people are happy.

**What do you see as the possible benefit or detriment for the community?**

The only thing that concerns me about the carbon tax (for example) is the potential loss of jobs. Coal mining employs a lot of people. If you do away with it, what becomes of the industry? I'm from South Australia and there are already wind farms down there.

**Visit the expo!** For more information on sustainable energy visit the Dubbo Sustainable City Expo in Victoria Park on September 11



# Rural lifestyle with views

Immaculately presented and located only a few kilometres from the CBD is this fabulous property which would be perfect for the busy family, offering 6.846 hectares (16.92 acres).

Enjoy a rural lifestyle on a property which offers town water.

Architecturally-designed, Bessa block, iron roof, slate floors with timber a feature throughout.

Four very large bedrooms all with built-in robes and an ensuite in the master bedroom which offers scenic views out over the lush lawns, taking in gardens, the magnificent pool and finally the local ranges.

The inside of the house has been designed with two separate living rooms, ideal for the older children.

The formal lounge room offers the most amazing brick and stone open fireplace along with a split-system, reverse-cycle airconditioner, while the family rooms has a slow combustion wood heater and another split-system airconditioner.

Storage is certainly not a problem especially in the kitchen which includes a



1 Mountain View Place.

dishwasher as a bonus. A good-size laundry with excellent storage and separate side entrance.

An extra-large, Colorbond shed has been erected to store the tractors and hay, while an open garage which matches the house in design doubles as a workshop and accommodates two cars.

The property has been divided into six paddocks, with water available to four paddocks.

All boundary fences are in excellent condition.

This property can only be described as perfect, come along and judge for yourself.

For sale at just \$450,000 this property is not to be

missed.

Please do not hesitate to contact our office if we can be of further assistance as it is all part of the service.

Julie Bennett  
Property Consultant  
Peter Milling & Company,  
29 Nanima Crescent  
Telephone: 02 6845 1555  
Fax: 02 6845 3101



67 Maxwell Street.

## Add this one to your portfolio

If you are looking for a good investment or a first home, then 67 Maxwell Street could be what you are looking for.

It features three large bedrooms, a large lounge room and a back pergola area for living and entertaining.

It also has a wood fire which has become very popular because of rising electricity prices.

Outside there is a garage, large back yard and a set of well-built chook pens.

All in all this home at \$105,000 is very good value as it rents at \$160 per week.

For further information and inspection contact Rex Turner on 0428 636 888



3 Percy Street

Find it  
Buy it  
Sell it  
in the  
**Wellington Times Classifieds**  
simply call  
**6845 2755**

**LJ Hooker**

**BRAND NEW - NEVER LIVED IN!**



This wonderful 4 bedroom home has never been lived in and is up for genuine sale. It features an alfresco entertainment area under the main roof, ducted evaporative air conditioning right through the home, quality ceramic tiling to wet areas, entry, kitchen, family room, hallway and front porch. There is carpet in remaining rooms with down lights in living areas. Basis - including wall and ceiling insulation, gas hot water, 3A rated tapware and toilets, and 4 generous bedrooms with built-ins, main with ensuite. Outside features all new colourbond fences, rainwater tank and turf. Also don't forget the large double garage. Taking all things into consideration, this home has it all and is ready to move into.

Open House Sat 27/8/11 10am to 10.30 am

**L.J. Hooker Wellington 6845 3058**  
**24 Maughan Street - Rex Turner 0428 636 888**

nobody does it better® **LJ Hooker**

## Top investment opportunity

A classic home in a classic area. This property has been well maintained over the years. The landlord has installed good heating and cooling to ensure tenants are comfortable.

Therefore, this property is currently rented with an excellent long-term tenant.

Set on 543.8 square metres of land, the whole property is low maintenance.

The house offers three very large bedrooms with high ceilings. The lounge room is centrally located and has a cosy atmosphere. The spacious kitchen could accommodate a dining table.

The existing dining room could easily be converted into a family room if desired.

The bathroom is not large but very functional with a half bath in the shower.

The final bonus is the double lock-up garage - a rare find for any investment property.

All the benefits have been listed as an investment property, so imagine what you could do. An excellent opportunity awaits. Just one look and this property could be yours for \$150,000.

Please do not hesitate to contact our office if we can be of further assistance as it is all part of the service.

Julie Bennett  
Property Consultant  
Peter Milling & Company,  
29 Nanima Crescent  
Telephone: 02 6845 1555  
Fax: 02 6845 3101

Infigen Energy is holding a Community Information Session for the proposed Bodangora Wind Farm on:

Friday, 2 September 2011, at 1-6 PM and

Saturday, 3 September 2011, at 8 AM-2 PM

Comobella Hall, Crn of Dunedoo and Forestvale Rd, Comobella

This is an opportunity to come and meet the project team, learn about the project, share any suggestions and discuss your potential participation in the project (contractors and tradespeople). Refreshments will be provided.



Contact:  
Frank Boland  
(02) 8031 9900  
Frank.Boland@infigenenergy.com



**1 in 2 people are diagnosed with cancer by age 85**

Can you help make a difference?

Register or donate  
at [daffodilday.com.au](http://daffodilday.com.au)

Friday 26 August

**daffodil day**  
Cancer Council





John Whiteley.



Valma Smith.



## Governor visits

The District Lions Governor Michele Bentley visited Wellington and caught up with fabulous team at the Lion of Waterloo.

Frank Goldfinch captured some of the images

LEFT: Paul Smith.



Paul Smith, Keith and Margaret Reinhard.



BELOW: 0169- Michele Bentley

Infigen Energy is holding a Community Information Session for the proposed Bodangora Wind Farm on:

**Friday, 2 September 2011, at 1-6 PM and  
Saturday, 3 September 2011, at 8 AM-2 PM**

**Comobella Hall, Crn of Dunedoo and Forestvale Rd, Comobella**

This is an opportunity to come and meet the project team, learn about the project, share any suggestions and discuss your potential participation in the project (contractors and tradespeople). Refreshments will be provided.

**Contact:**  
Frank Boland  
(02) 8031 9900  
Frank.Boland@infigenenergy.com

**infigen**



RIGHT: Bev Cameron.



## Want your photo in the Wellington Times?

*If you are having a party, marking an important milestone or simply gathering for a fun night out, ring and let us know.*

Staff at the Wellington Times will be too happy to come and take some photos and write a story at your event.

**Book in your celebration with us by phoning 6845 2755**

**WELLINGTON  
times**



# Fun for all ages at St Mary's fete



Ashley Parkes took the bucking bull challenge



Billy and Marisa Stanley enjoying the day



Millie, Tiari and Bree were havin' fun



Merle Ferguson was all smiles

Infigen Energy is holding a Community Information Session for the proposed Bodangora Wind Farm on:

Friday, 2 September 2011, at 1-6 PM and  
Saturday, 3 September 2011, at 8 AM-2 PM

Comobella Hall, Crn of Dunedoo and Forestvale Rd, Comobella

This is an opportunity to come and meet the project team, learn about the project, share any suggestions and discuss your potential participation in the project (contractors and tradespeople). Refreshments will be provided.

Contact:  
Frank Boland  
(02) 8031 9900  
Frank.Boland@infigenenergy.com

**infigen**



Grace O'Shannessy, Joel Mason, Bonny and Lilly Sheridan, Bella and Shaun Joshua

## CARAVAN, CAMPING, 4WD, FISH AND BOAT SHOW

### 4 Double Passes to be Won

*16th, 17th & 18th September, 2011 Dubbo Showground*

Name: .....

Phone: .....

To enter, simply fill out this coupon and drop it in or post it to The Wellington Times 76 Percy Street, PO Box 42, Wellington 2820. Competition closes 5pm Wednesday 14th September, 2011. Winners will be announced in the Wellington Times Friday 16th September 2011. Original coupons will be accepted. TPL 06/05140.



## Windfarm windfall

FARREN HOTHAM  
05 Sep, 2011 10:36 AM



A proposed windfarm for Bodangora will be a boon for local contractors and Wellington tradesman Brad James believes he's being heard.

"I was talking with project manager Frank Boland and I explained when the jail came here many local contractors missed out and work went to Dubbo.

"I stressed they should believe in local contractors, local means Wellington," he said. "We are setting up a contractors' register and list, where we can tell local tradesman about what we're doing and keep them updated.

"We understand local and will work closely with them and bigger contractors will advised to work with them," Infigen Energy's Frank Boland said at a community consultation at the beautiful Comobella Hall.

Infigen Energy's Communications co-ordinator Marju Tonnisson who will work with stakeholders agreed.

"As well as local tradesman and contractors, there will be five to 10 people employed here," Ms Tonnisson said.

'And they have to live nearby or in close proximity" Mr. Boland added.

On talk the State Governments are wary of windfarms Mr. Boland appeared positive about engaging with them. " We have requested that State Governments talk and understand more and that the public don't believe all they see on programmes like Current Affair but learn and understand the reality" he said

Belinda Ingram who came to look at the development "I'm still undecided about but it's very interesting she said.

Infigen Energy's community fund will also be a boost for the shire. " I will be looking after stakeholders and the community and we can work together and put money back into the community and the economy" the Estonian born communications coordinator said. Ms Tonnisson has also worked with the United Nations in a street kids project and it was suggested she could work on a similar youth project here which she will look at it. She said

Local farmers have also dropped by the Comobella Hall "On a whole they are very positive. We have asked them to do a survey and give feedback and this always works well" Mr. Boland pointed out

"This type of community consultation and engagement does change minds and assists with a good depth of understanding" Mr. Boland pointed out " We are very active in working with communities" he stressed.



Infigen Energy's Project Manager Frank Boland and local Belinda Ingram look at papers in Comobella



## **Bodangora Wind Farm – Consultation summary**

### **1. LANDOWNERS:**

- Initial call
- Face to face meetings (multiple)
- Hosted tours at Infigen's Capital Wind Farm
- Group meetings x 2

### **2. COMMUNITY:**

- See attached communication log
- Offered face to face meetings with all direct neighbours
- Updates during EA, in particular prior to the noise assessment
- Phone all direct neighbours prior to hosting open day and offered to meet individually
- Four adverts in local paper
- Radio interview
- Individual open day invitations and project briefs to all neighbours within 5km's
- Hosted two community information days at nearby community hall
- Follow-up letters and meetings after open day, ongoing.

### **3. COUNCIL:**

- First meeting held with senior staff to introduce project and gain local insight
- Second meeting with Mayor and senior staff to update on the project status
- Third meeting held with David Babicci who looks after roads and transport within the shire, another project update was also given to senior staff.
- Presentation to full council just prior to the open day
- Formal consultation directly with roads and engineering department

### **4. CONTRACTORS:**

- Invitations to the open day were extended to all local contractors
- A contractor register was established at the open day with a significant amount of interest from a wide range of professions

Infigen Energy  
Development Pty Ltd  
Level 22, 56 Pitt Street  
Sydney NSW 2000  
Australia  
T +61 2 8031 9900  
F +61 2 9247 6086  
[www.infigenenergy.com](http://www.infigenenergy.com)





3 November 2011

Aerial Agriculture Association of Australia (AAAA)  
PO Box 353  
Mitchell ACT 2911

### **Bodangora Wind Farm Proposal - Invitation to comment**

**Infigen Energy  
Development Pty Ltd**  
Level 22, 56 Pitt Street  
Sydney NSW 2000  
Australia  
T +61 2 8031 9900  
F +61 2 9247 6086  
[www.infigenenergy.com](http://www.infigenenergy.com)

This letter provides information on the proposed Bodangora Wind Farm and seeks comment on the proposal from AAAA in relation to potential impact from the construction and operation of the Wind Farm.

The layout for the Bodangora Wind Farm currently involves 37 sites for wind turbines, each three bladed turbine having a generation capacity of between 1.8 to 3 megawatts and a total height in the order of 125-150 meters above ground level. The height of the turbines is made up of a hub height in the range of 80 to 100 meters and rotor diameter up to 112 meters (blade length of up to 56 meters). The wind farm site is located in pastoral country along ridges to the east of the Bodangora Village and to the west of Spicers Creek (approximately 15km East of Wellington).

The nearest airport is the Wellington Airport, which is to the south west of the project. The airport is owned and operated by the Wellington Shire Council. The nearest turbine (WTG 43) is over 5km from the main runway and in a perpendicular direction (NE). Based on the distances involved, topography of the locality, the Aerodrome and OLS arrangement and location and height of the proposed wind turbine structures, it is expected that any air traffic using the Wellington Airport would be well clear of the wind turbine structures.

At this stage, the project proponent, Bodangora Wind Farm Pty Ltd, is targeting to have the Environmental Assessment completed and lodged with NSW Department of Planning in Q.4. 2011. Provided that approval is obtained for the development and that Bodangora Wind Farm Pty Ltd proceeds with the project, the earliest date for construction of the wind farm will be in 1<sup>st</sup> half of 2013. The wind farm would operate for about 20 years or longer.

**Figure 1** provides the preliminary wind turbine layout within the Bodangora Wind Farm project area. The turbine locations (Table 1) have not been finalised yet and could be subject to micro-siting to address various site issues or consultation with stakeholders. The actual coordinates of each turbine and the details of the ground level, tower height and rotor dimensions will only be finalised following the gaining of Project Approval, appointment of a project contractor and with the benefit of additional results of energy modelling and siting studies.

To ensure that any air safety issues have been identified during the planning stage for the proposed wind farm, your comments are sought on the proposed array relative to aircraft operational considerations for the locality. Wellington Shire Council, AirServices Australia, Department of Defense and CASA will be separately consulted to gain their comments on the proposal.



Should you have any comments on the current form of the proposal please feel free to contact me at (02) 8031 9914 or e-mail [frank.boland@infigenenergy.com](mailto:frank.boland@infigenenergy.com)

Regards.

A handwritten signature in dark blue ink, reading "Frank Boland". The signature is written in a cursive style, with the first letters of each word being capitalized and prominent.

**Frank Boland**  
Development Manager





Table 1. Preliminary Layout Co-ordinates

Aust UTM GDA94			
X	Y	Z	User label
702543	6408438	640	WTG-08
690990	6411498	500	WTG-10
698211	6412679	600	WTG-12
698831	6413115	580	WTG-13
695291	6414133	540	WTG-15
697255	6411811	600	WTG-16
699713	6412565	608	WTG-17
699560	6411787	640	WTG-18
699518	6412163	638.2	WTG-19
696649	6412773	595.9	WTG-20
696262	6413204	580	WTG-21
696260	6412508	595	WTG-22
696086	6411834	600	WTG-23
695086	6412384	575	WTG-24
694977	6415650	520	WTG-25
694944	6414839	535.3	WTG-26
694935	6415159	528.9	WTG-27
694526	6411184	560	WTG-28
694275	6414144	540	WTG-29
694083	6411772	573.5	WTG-30
694025	6414477	538.4	WTG-31
693448	6416362	500	WTG-32
693423	6415324	520	WTG-33
693346	6411867	557.3	WTG-34
693193	6411552	548.8	WTG-35
692829	6414961	520	WTG-36
692599	6411960	540	WTG-37
692599	6416740	500	WTG-38
691963	6415040	500	WTG-39
691692	6416642	500	WTG-40
691672	6415899	500	WTG-41
690833	6413029	500	WTG-42
690466	6410294	500	WTG-43
689673	6412056	500	WTG-44
689646	6412574	500	WTG-45
689376	6413614	480	WTG-46
688635	6412811	480	WTG-47







3 November 2011

Airservices Australia  
GPO Box 367  
Canberra ACT 2601

### **Bodangora Wind Farm Proposal - Invitation to comment**

This letter provides information on the proposed Bodangora Wind Farm and seeks comment on the proposal from Airservices Australia in relation to potential impact of the construction and operation of the Wind Farm.

The layout for the Bodangora Wind Farm currently involves 37 sites for wind turbines, each three bladed turbine having a generation capacity of between 1.8 to 3 megawatts and a total height in the order of 125-150 meters above ground level. The height of the turbines is made up of a hub height in the range of 80 to 100 meters and rotor diameter up to 112 meters (blade length of up to 56 meters). The wind farm site is located in pastoral country along ridges to the east of the Bodangora Village and to the west of Spicers Creek (approximately 15km East of Wellington).

The nearest airport is the Wellington Airport, which is to the south west of the project. The airport is owned and operated by the Wellington Shire Council. The nearest turbine (WTG 43) is over 5km from the main runway and in a perpendicular direction. Based on the distances involved, topography of the locality, the Aerodrome and OLS arrangement and location and height of the proposed wind turbine structures, it is expected that any air traffic using the Wellington Airport would be well clear of the wind turbine structures.

At this stage, the project proponent, Bodangora Wind Farm Pty Ltd, is targeting to have the Environmental Assessment completed and lodged with NSW Department of Planning in Q.4. 2011. Provided that approval is obtained for the development and that Bodangora Wind Farm Pty Ltd proceeds with the project, the earliest date for construction of the wind farm will be in 1<sup>st</sup> half of 2013. The wind farm would operate for about 20 years or longer.

**Figure 1** provides the preliminary wind turbine layout within the Bodangora Wind Farm project area. The turbine locations (Table 1) have not been finalised yet and could be subject to micro-siting to address various site issues or consultation with stakeholders. The actual coordinates of each turbine and the details of the ground level, tower height and rotor dimensions will only be finalised following the gaining of Project Approval, appointment of a project contractor and with the benefit of additional results of energy modelling and siting studies.

To ensure that any air safety issues have been identified during the planning stage for the proposed wind farm, your comments are sought on the proposed array relative to aircraft operational considerations for the locality. Wellington Shire Council, Aerial Agricultural Society of Australia (AAAA), Department of Defense and CASA will be separately consulted to gain their comments on the proposal.

Infigen Energy  
Development Pty Ltd  
Level 22, 56 Pitt Street  
Sydney NSW 2000  
Australia  
T +61 2 8031 9900  
F +61 2 9247 6086  
[www.infigenenergy.com](http://www.infigenenergy.com)



Should you have any comments on the current form of the proposal please feel free to contact me at (02) 8031 9914 or e-mail [frank.boland@infigenenergy.com](mailto:frank.boland@infigenenergy.com)

Regards.

A handwritten signature in black ink that reads "Frank Boland". The signature is written in a cursive style, with the first letters of each word being capitalized and prominent.

**Frank Boland**  
Development Manager



Table 1. Preliminary Layout Co-ordinates

Aust UTM GDA94			
X	Y	Z	User label
702543	6408438	640	WTG-08
690990	6411498	500	WTG-10
698211	6412679	600	WTG-12
698831	6413115	580	WTG-13
695291	6414133	540	WTG-15
697255	6411811	600	WTG-16
699713	6412565	608	WTG-17
699560	6411787	640	WTG-18
699518	6412163	638.2	WTG-19
696649	6412773	595.9	WTG-20
696262	6413204	580	WTG-21
696260	6412508	595	WTG-22
696086	6411834	600	WTG-23
695086	6412384	575	WTG-24
694977	6415650	520	WTG-25
694944	6414839	535.3	WTG-26
694935	6415159	528.9	WTG-27
694526	6411184	560	WTG-28
694275	6414144	540	WTG-29
694083	6411772	573.5	WTG-30
694025	6414477	538.4	WTG-31
693448	6416362	500	WTG-32
693423	6415324	520	WTG-33
693346	6411867	557.3	WTG-34
693193	6411552	548.8	WTG-35
692829	6414961	520	WTG-36
692599	6411960	540	WTG-37
692599	6416740	500	WTG-38
691963	6415040	500	WTG-39
691692	6416642	500	WTG-40
691672	6415899	500	WTG-41
690833	6413029	500	WTG-42
690466	6410294	500	WTG-43
689673	6412056	500	WTG-44
689646	6412574	500	WTG-45
689376	6413614	480	WTG-46
688635	6412811	480	WTG-47





3 November 2011

Malcolm McGregor  
CASA  
GPO Box 2005  
Canberra ACT 2601

Dear Mr McGregor

### **Bodangora Wind Farm Proposal - Invitation to comment**

Infigen Energy  
Development Pty Ltd  
Level 22, 56 Pitt Street  
Sydney NSW 2000  
Australia  
T +61 2 8031 9900  
F +61 2 9247 6086  
[www.infigenenergy.com](http://www.infigenenergy.com)

This letter provides information on the proposed Bodangora Wind Farm and seeks comment on the proposal from CASA in relation to potential impact of the construction and operation of the Wind Farm.

The layout for the Bodangora Wind Farm currently involves 37 sites for wind turbines, each three bladed turbine having a generation capacity of between 1.8 to 3 megawatts and a total height in the order of 125-150 meters above ground level. The height of the turbines is made up of a hub height in the range of 80 to 100 meters and rotor diameter up to 112 meters (blade length of up to 56 meters). The wind farm site is located in pastoral country along ridges to the east of the Bodangora Village and to the west of Spicers Creek (approximately 15km East of Wellington).

The nearest airport is the Wellington Airport, which is to the south west of the project. The airport is owned and operated by the Wellington Shire Council. The nearest turbine (WTG 43) is over 5km from the main runway and in a perpendicular direction. Based on the distances involved, topography of the locality, the Aerodrome and OLS arrangement and location and height of the proposed wind turbine structures, it is expected that any air traffic using the Wellington Airport would be well clear of the wind turbine structures.

At this stage, the project proponent, Bodangora Wind Farm Pty Ltd, is targeting to have the Environmental Assessment completed and lodged with NSW Department of Planning in Q.4. 2011. Provided that approval is obtained for the development and that Bodangora Wind Farm Pty Ltd proceeds with the project, the earliest date for construction of the wind farm will be in 1<sup>st</sup> half of 2013. The wind farm would operate for about 20 years or longer.

**Figure 1** provides the preliminary wind turbine layout within the Bodangora Wind Farm project area. The turbine locations (Table 1) have not been finalised yet and could be subject to micro-siting to address various site issues or consultation with stakeholders. The actual coordinates of each turbine and the details of the ground level, tower height and rotor dimensions will only be finalised following the gaining of Project Approval, appointment of a project contractor and with the benefit of additional results of energy modelling and siting studies.

To ensure that any air safety issues have been identified during the planning stage for the proposed wind farm, your comments are sought on the proposed array relative to aircraft operational considerations for the locality. Wellington Shire Council, AirServices Australia, Department of Defense and the Aerial Agricultural Association (AAAA) will be separately consulted to gain their comments on the proposal.



Should you have any comments on the current form of the proposal please feel free to contact me at (02) 8031 9914 or e-mail [frank.boland@infigenenergy.com](mailto:frank.boland@infigenenergy.com)

Regards.

A handwritten signature in black ink that reads "Frank Boland". The signature is written in a cursive style, with the first letters of each word being capitalized and prominent.

**Frank Boland**  
Development Manager



Table 1. Preliminary Layout Co-ordinates

Aust UTM GDA94			
X	Y	Z	User label
702543	6408438	640	WTG-08
690990	6411498	500	WTG-10
698211	6412679	600	WTG-12
698831	6413115	580	WTG-13
695291	6414133	540	WTG-15
697255	6411811	600	WTG-16
699713	6412565	608	WTG-17
699560	6411787	640	WTG-18
699518	6412163	638.2	WTG-19
696649	6412773	595.9	WTG-20
696262	6413204	580	WTG-21
696260	6412508	595	WTG-22
696086	6411834	600	WTG-23
695086	6412384	575	WTG-24
694977	6415650	520	WTG-25
694944	6414839	535.3	WTG-26
694935	6415159	528.9	WTG-27
694526	6411184	560	WTG-28
694275	6414144	540	WTG-29
694083	6411772	573.5	WTG-30
694025	6414477	538.4	WTG-31
693448	6416362	500	WTG-32
693423	6415324	520	WTG-33
693346	6411867	557.3	WTG-34
693193	6411552	548.8	WTG-35
692829	6414961	520	WTG-36
692599	6411960	540	WTG-37
692599	6416740	500	WTG-38
691963	6415040	500	WTG-39
691692	6416642	500	WTG-40
691672	6415899	500	WTG-41
690833	6413029	500	WTG-42
690466	6410294	500	WTG-43
689673	6412056	500	WTG-44
689646	6412574	500	WTG-45
689376	6413614	480	WTG-46
688635	6412811	480	WTG-47





3 November 2011

General Manager  
Central West CMA  
PO Box 227  
Wellington NSW 2820

Att: Tim Ferraro

### **Bodangora Wind Farm Proposal - Invitation to comment**

Dear Mr Ferraro,

This letter provides information on the proposed Bodangora Wind Farm and seeks comment on the proposal from the Central West CMA in relation to potential impacts the construction and operation of the Wind Farm.

The layout for the Bodangora Wind Farm currently involves 37 sites for wind turbines, each three bladed turbine having a generation capacity of between 1.8 to 3 megawatts and a total height of 125-150 meters above ground level. The wind farm site is located in pastoral country along ridges to the east of the Bodangora Village and to the west of Spicers Creek (approximately 15km East of Wellington). Preliminary turbine coordinates are provided in Table 1. A 33kV/132kV substation will be located at the south eastern part of the wind farm site and will include two large transformers.

At this stage, the project proponent, Bodangora Wind Farm Pty Ltd, is targeting to have the Environmental Assessment completed and lodged with NSW Department of Planning in Q.4. 2011. Provided that approval is obtained for the development and that Bodangora Wind Farm Pty Ltd proceeds with the project, the earliest date for construction of the wind farm will be in 1<sup>st</sup> half of 2013. The wind farm would operate for about 20 years or longer.

**Figure 1** provides the preliminary wind turbine layout within the Bodangora Wind Farm project area. The turbine locations (Table 1) have not been finalised yet and could be subject to micrositing to address various site issues or consultation with stakeholders. The actual coordinates of each turbine and the details of the ground level, tower height and rotor dimensions will only be finalised following the gaining of Project Approval, appointment of a project contractor and with the benefit of additional results of energy modeling and siting studies.

To ensure that any catchment management issues have been identified during the planning stage for the proposed wind farm, your comments are sought on the proposed layout relative to catchment management considerations for the locality. As part of any final approvals for the project, FCWF will develop a detailed environmental management plan (including a Soil and Water Management Plan) to the satisfaction of the Planning Minister including the necessary conditions to ensure the creeks and rivers are not adversely affected during the construction of the project.

Infigen Energy  
Development Pty Ltd  
Level 22, 56 Pitt Street  
Sydney NSW 2000  
Australia  
T +61 2 8031 9900  
F +61 2 9247 6086  
[www.infigenenergy.com](http://www.infigenenergy.com)



Should you have any comments on the current form of the proposal or wish to discuss the proposal further, please feel free to contact me at (02) 8031 9914 or e-mail [frank.boland@infigenenergy.com](mailto:frank.boland@infigenenergy.com)

Regards.

A handwritten signature in dark blue ink, reading "FJ Boland". The signature is written in a cursive style, with the first letters of the first and last names being capitalized and prominent.

**Frank Boland**  
Development Manager



Table 1. Preliminary Layout Co-ordinates

Aust UTM GDA94			
X	Y	Z	User label
702543	6408438	640	WTG-08
690990	6411498	500	WTG-10
698211	6412679	600	WTG-12
698831	6413115	580	WTG-13
695291	6414133	540	WTG-15
697255	6411811	600	WTG-16
699713	6412565	608	WTG-17
699560	6411787	640	WTG-18
699518	6412163	638.2	WTG-19
696649	6412773	595.9	WTG-20
696262	6413204	580	WTG-21
696260	6412508	595	WTG-22
696086	6411834	600	WTG-23
695086	6412384	575	WTG-24
694977	6415650	520	WTG-25
694944	6414839	535.3	WTG-26
694935	6415159	528.9	WTG-27
694526	6411184	560	WTG-28
694275	6414144	540	WTG-29
694083	6411772	573.5	WTG-30
694025	6414477	538.4	WTG-31
693448	6416362	500	WTG-32
693423	6415324	520	WTG-33
693346	6411867	557.3	WTG-34
693193	6411552	548.8	WTG-35
692829	6414961	520	WTG-36
692599	6411960	540	WTG-37
692599	6416740	500	WTG-38
691963	6415040	500	WTG-39
691692	6416642	500	WTG-40
691672	6415899	500	WTG-41
690833	6413029	500	WTG-42
690466	6410294	500	WTG-43
689673	6412056	500	WTG-44
689646	6412574	500	WTG-45
689376	6413614	480	WTG-46
688635	6412811	480	WTG-47





3 November 2011

Department of Environment, Climate Change and Water  
PO Box A290  
Sydney South NSW 1232

### **Bodangora Wind Farm Proposal - Invitation to comment**

This letter provides information on the proposed Bodangora Wind Farm and seeks comment on the proposal from the Department of Environment, Climate Change and Water in relation to potential impacts the construction and operation of the Wind Farm.

**Infigen Energy  
Development Pty Ltd**  
Level 22, 56 Pitt Street  
Sydney NSW 2000  
Australia  
T +61 2 8031 9900  
F +61 2 9247 6086  
[www.infigenenergy.com](http://www.infigenenergy.com)

The layout for the Bodangora Wind Farm currently involves 37 sites for wind turbines, each three bladed turbine having a generation capacity of between 1.8 to 3 megawatts and a total height of 125-150 metres above ground level. The wind farm site is located in pastoral country along ridges to the east of the Bodangora Village and to the west of Spicers Creek (approximately 15km East of Wellington). Preliminary turbine coordinates are provided in Table 1. A 33kV/132kV substation will be located at the south eastern part of the wind farm site and will include two large transformers.

At this stage, the project proponent, Bodangora Wind Farm Pty Ltd, is targeting to have the Environmental Assessment completed and lodged with NSW Department of Planning in Q.4. 2011. Provided that approval is obtained for the development and that Bodangora Wind Farm Pty Ltd proceeds with the project, the earliest date for construction of the wind farm will be in 1<sup>st</sup> half of 2013. The wind farm would operate for about 20 years or longer.

**Figure 1** provides the preliminary wind turbine layout within the Bodangora Wind Farm project area. The turbine locations (Table 1) have not been finalised yet and could be subject to micro-siting to address various site issues or consultation with stakeholders. The actual coordinates of each turbine and the details of the ground level, tower height and rotor dimensions will only be finalised following the gaining of Project Approval, appointment of a project contractor and with the benefit of additional results of energy modelling and siting studies.

Should you have any comments on the current form of the proposal or wish to discuss the proposal further, please feel free to contact me at (02) 8031 9914 or e-mail [frank.boland@infigenenergy.com](mailto:frank.boland@infigenenergy.com)

Regards.

A handwritten signature in black ink that reads "FJ Boland".

**Frank Boland**  
Development Manager



Table 1. Preliminary Layout Co-ordinates

Aust UTM GDA94			
X	Y	Z	User label
702543	6408438	640	WTG-08
690990	6411498	500	WTG-10
698211	6412679	600	WTG-12
698831	6413115	580	WTG-13
695291	6414133	540	WTG-15
697255	6411811	600	WTG-16
699713	6412565	608	WTG-17
699560	6411787	640	WTG-18
699518	6412163	638.2	WTG-19
696649	6412773	595.9	WTG-20
696262	6413204	580	WTG-21
696260	6412508	595	WTG-22
696086	6411834	600	WTG-23
695086	6412384	575	WTG-24
694977	6415650	520	WTG-25
694944	6414839	535.3	WTG-26
694935	6415159	528.9	WTG-27
694526	6411184	560	WTG-28
694275	6414144	540	WTG-29
694083	6411772	573.5	WTG-30
694025	6414477	538.4	WTG-31
693448	6416362	500	WTG-32
693423	6415324	520	WTG-33
693346	6411867	557.3	WTG-34
693193	6411552	548.8	WTG-35
692829	6414961	520	WTG-36
692599	6411960	540	WTG-37
692599	6416740	500	WTG-38
691963	6415040	500	WTG-39
691692	6416642	500	WTG-40
691672	6415899	500	WTG-41
690833	6413029	500	WTG-42
690466	6410294	500	WTG-43
689673	6412056	500	WTG-44
689646	6412574	500	WTG-45
689376	6413614	480	WTG-46
688635	6412811	480	WTG-47



3 November 2011

Mr Matthew Dopson  
Land Planning and Spatial Information  
Brindabella Business Park BP3-1-B103  
Department of Defense  
CANBERRA ACT 2600

### **Bodangora Wind Farm Proposal - Invitation to comment**

This letter provides information on the proposed Bodangora Wind Farm and seeks comment on the proposal from the Department of Defense in relation to potential impacts the construction and operation of the Wind Farm.

The layout for the Bodangora Wind Farm currently involves 37 sites for wind turbines, each three bladed turbine having a generation capacity of between 1.8 to 3 megawatts and a total height in the order of 125-150 meters above ground level. The height of the turbines is made up of a hub height in the range of 80 to 100 meters and rotor diameter up to 112 meters (blade length of up to 56 meters). The wind farm site is located in pastoral country along ridges to the east of the Bodangora Village and to the west of Spicers Creek (approximately 15km East of Wellington).

At this stage, the project proponent, Bodangora Wind Farm Pty Ltd, is targeting to have the Environmental Assessment completed and lodged with NSW Department of Planning in Q.4. 2011. Provided that approval is obtained for the development and that Bodangora Wind Farm Pty Ltd proceeds with the project, the earliest date for construction of the wind farm will be in 1<sup>st</sup> half of 2013. The wind farm would operate for about 20 years or longer.

**Figure 1** provides the preliminary wind turbine layout within the Bodangora Wind Farm project area. The turbine locations (Table 1) have not been finalised yet and could be subject to micro-siting to address various site issues or consultation with stakeholders. The actual coordinates of each turbine and the details of the ground level, tower height and rotor dimensions will only be finalised following the gaining of Project Approval, appointment of a project contractor and with the benefit of additional results of energy modeling and siting studies.

Similar correspondence has also been sent to CASA, AirServices Australia, AAAA and Wellington Council.

Should you have any comments on the current form of the proposal, particularly issues relating to Department of Defense concerns in the project area or matters that you feel should be addressed by the Environmental Assessment, please feel free to contact me at (02) 8031 9914 or e-mail [frank.boland@infigenenergy.com](mailto:frank.boland@infigenenergy.com)

Regards.

A handwritten signature in black ink that reads "Frank Boland".

**Frank Boland**  
Development Manager

**Infigen Energy  
Development Pty Ltd**  
Level 22, 56 Pitt Street  
Sydney NSW 2000  
Australia  
T +61 2 8031 9900  
F +61 2 9247 6086  
[www.infigenenergy.com](http://www.infigenenergy.com)





Table 1. Preliminary Layout Co-ordinates

Aust UTM GDA94			
X	Y	Z	User label
702543	6408438	640	WTG-08
690990	6411498	500	WTG-10
698211	6412679	600	WTG-12
698831	6413115	580	WTG-13
695291	6414133	540	WTG-15
697255	6411811	600	WTG-16
699713	6412565	608	WTG-17
699560	6411787	640	WTG-18
699518	6412163	638.2	WTG-19
696649	6412773	595.9	WTG-20
696262	6413204	580	WTG-21
696260	6412508	595	WTG-22
696086	6411834	600	WTG-23
695086	6412384	575	WTG-24
694977	6415650	520	WTG-25
694944	6414839	535.3	WTG-26
694935	6415159	528.9	WTG-27
694526	6411184	560	WTG-28
694275	6414144	540	WTG-29
694083	6411772	573.5	WTG-30
694025	6414477	538.4	WTG-31
693448	6416362	500	WTG-32
693423	6415324	520	WTG-33
693346	6411867	557.3	WTG-34
693193	6411552	548.8	WTG-35
692829	6414961	520	WTG-36
692599	6411960	540	WTG-37
692599	6416740	500	WTG-38
691963	6415040	500	WTG-39
691692	6416642	500	WTG-40
691672	6415899	500	WTG-41
690833	6413029	500	WTG-42
690466	6410294	500	WTG-43
689673	6412056	500	WTG-44
689646	6412574	500	WTG-45
689376	6413614	480	WTG-46
688635	6412811	480	WTG-47



3 November 2011

Investment and Industry NSW  
Locked Bag 21  
Orange NSW 2800

### **Bodangora Wind Farm Proposal - Invitation to comment**

This letter provides information on the proposed Bodangora Wind Farm and seeks comment on the proposal from the Industry and Investment NSW in relation to potential impacts the construction and operation of the Wind Farm.

The layout for the Bodangora Wind Farm currently involves 37 sites for wind turbines, each three bladed turbine having a generation capacity of between 1.8 to 3 megawatts and a total height of 125-150 meters above ground level. The wind farm site is located in pastoral country along ridges to the east of the Bodangora Village and to the west of Spicers Creek (approximately 15km East of Wellington). Preliminary turbine coordinates are provided in Table 1. A 33kV/132kV substation will be located at the south eastern part of the wind farm site and will include two large transformers.

At this stage, the project proponent, Bodangora Wind Farm Pty Ltd, is targeting to have the Environmental Assessment completed and lodged with NSW Department of Planning in Q.4. 2011. Provided that approval is obtained for the development and that Bodangora Wind Farm Pty Ltd proceeds with the project, the earliest date for construction of the wind farm will be in 1<sup>st</sup> half of 2013. The wind farm would operate for about 20 years or longer.

**Figure 1** provides the preliminary wind turbine layout within the Bodangora Wind Farm project area. The turbine locations (Table 1) have not been finalised yet and could be subject to micro-siting to address various site issues or consultation with stakeholders. The actual coordinates of each turbine and the details of the ground level, tower height and rotor dimensions will only be finalised following the gaining of Project Approval, appointment of a project contractor and with the benefit of additional results of energy modeling and siting studies.

Should you have any comments on the current form of the proposal or wish to discuss the proposal further, please feel free to contact me at (02) 8031 9914 or e-mail [frank.boland@infigenenergy.com](mailto:frank.boland@infigenenergy.com)

Regards.

A handwritten signature in black ink that reads "FJ Boland". The signature is written in a cursive, slightly stylized font.

**Frank Boland**  
Development Manager

**Infigen Energy  
Development Pty Ltd**  
Level 22, 56 Pitt Street  
Sydney NSW 2000  
Australia  
T +61 2 8031 9900  
F +61 2 9247 6086  
[www.infigenenergy.com](http://www.infigenenergy.com)



Table 1. Preliminary Layout Co-ordinates

Aust UTM GDA94			
X	Y	Z	User label
702543	6408438	640	WTG-08
690990	6411498	500	WTG-10
698211	6412679	600	WTG-12
698831	6413115	580	WTG-13
695291	6414133	540	WTG-15
697255	6411811	600	WTG-16
699713	6412565	608	WTG-17
699560	6411787	640	WTG-18
699518	6412163	638.2	WTG-19
696649	6412773	595.9	WTG-20
696262	6413204	580	WTG-21
696260	6412508	595	WTG-22
696086	6411834	600	WTG-23
695086	6412384	575	WTG-24
694977	6415650	520	WTG-25
694944	6414839	535.3	WTG-26
694935	6415159	528.9	WTG-27
694526	6411184	560	WTG-28
694275	6414144	540	WTG-29
694083	6411772	573.5	WTG-30
694025	6414477	538.4	WTG-31
693448	6416362	500	WTG-32
693423	6415324	520	WTG-33
693346	6411867	557.3	WTG-34
693193	6411552	548.8	WTG-35
692829	6414961	520	WTG-36
692599	6411960	540	WTG-37
692599	6416740	500	WTG-38
691963	6415040	500	WTG-39
691692	6416642	500	WTG-40
691672	6415899	500	WTG-41
690833	6413029	500	WTG-42
690466	6410294	500	WTG-43
689673	6412056	500	WTG-44
689646	6412574	500	WTG-45
689376	6413614	480	WTG-46
688635	6412811	480	WTG-47



3 November 2011

Surveyor General  
Land and Property Management Authority (LPMA)  
PO Box 143  
Bathurst NSW 2795

Att: George Baitch

### **Bodangora Wind Farm Proposal - Invitation to comment**

Infigen Energy  
Development Pty Ltd  
Level 22, 56 Pitt Street  
Sydney NSW 2000  
Australia  
T +61 2 8031 9900  
F +61 2 9247 6086  
[www.infigenenergy.com](http://www.infigenenergy.com)

Dear Mr Baitch,

This letter provides information on the proposed Bodangora Wind Farm and seeks comment on the proposal from the LPMA in relation to potential impacts the construction and operation of the Wind Farm.

The layout for the Bodangora Wind Farm currently involves 37 sites for wind turbines, each three bladed turbine having a generation capacity of between 1.8 to 3 megawatts and a total height of 125-150 meters above ground level. The wind farm site is located in pastoral country along ridges to the east of the Bodangora Village and to the west of Spicers Creek (approximately 15km East of Wellington). Preliminary turbine coordinates are provided in Table 1. A 33kV/132kV substation will be located at the south eastern part of the wind farm site and will include two large transformers.

At this stage, the project proponent, Bodangora Wind Farm Pty Ltd, is targeting to have the Environmental Assessment completed and lodged with NSW Department of Planning in Q.4. 2011. Provided that approval is obtained for the development and that Bodangora Wind Farm Pty Ltd proceeds with the project, the earliest date for construction of the wind farm will be in 1<sup>st</sup> half of 2013. The wind farm would operate for about 20 years or longer.

**Figure 1** provides the preliminary wind turbine layout within the Bodangora Wind Farm project area. The turbine locations (Table 1) have not been finalised yet and could be subject to micro-siting to address various site issues or consultation with stakeholders. The actual coordinates of each turbine and the details of the ground level, tower height and rotor dimensions will only be finalised following the gaining of Project Approval, appointment of a project contractor and with the benefit of additional results of energy modelling and siting studies. The proposed locations of the turbines will also be influenced by consultation with stakeholders for a range of issues including survey issues.

I seek your advice as to whether the current proposed turbine locations are acceptable to LPMA. If the LPMA desire an adequate clearance from the sight lines, such a clearance could be included in the Project's Statement of Commitments of the Part 3A process under the NSW EP&A Act.



Should you have any comments on the current form of the proposal, particularly issues relating to any impact on survey operations, or wish to discuss the proposal further, please feel free to contact me at (02) 8031 9914 or e-mail [frank.boland@infigenenergy.com](mailto:frank.boland@infigenenergy.com)

Regards.

A handwritten signature in dark blue ink, reading "FJ Boland". The signature is written in a cursive style, with the first letters of the first and last names being capitalized and prominent.

**Frank Boland**  
Development Manager





Table 1. Preliminary Layout Co-ordinates

Aust UTM GDA94			
X	Y	Z	User label
702543	6408438	640	WTG-08
690990	6411498	500	WTG-10
698211	6412679	600	WTG-12
698831	6413115	580	WTG-13
695291	6414133	540	WTG-15
697255	6411811	600	WTG-16
699713	6412565	608	WTG-17
699560	6411787	640	WTG-18
699518	6412163	638.2	WTG-19
696649	6412773	595.9	WTG-20
696262	6413204	580	WTG-21
696260	6412508	595	WTG-22
696086	6411834	600	WTG-23
695086	6412384	575	WTG-24
694977	6415650	520	WTG-25
694944	6414839	535.3	WTG-26
694935	6415159	528.9	WTG-27
694526	6411184	560	WTG-28
694275	6414144	540	WTG-29
694083	6411772	573.5	WTG-30
694025	6414477	538.4	WTG-31
693448	6416362	500	WTG-32
693423	6415324	520	WTG-33
693346	6411867	557.3	WTG-34
693193	6411552	548.8	WTG-35
692829	6414961	520	WTG-36
692599	6411960	540	WTG-37
692599	6416740	500	WTG-38
691963	6415040	500	WTG-39
691692	6416642	500	WTG-40
691672	6415899	500	WTG-41
690833	6413029	500	WTG-42
690466	6410294	500	WTG-43
689673	6412056	500	WTG-44
689646	6412574	500	WTG-45
689376	6413614	480	WTG-46
688635	6412811	480	WTG-47



3 November 2011

NSW Office of Water  
GPO Box 3889  
Sydney NSW 2001

### **Bodangora Wind Farm Proposal - Invitation to comment**

This letter provides information on the proposed Bodangora Wind Farm and seeks comment on the proposal from the NSW Office of Water in relation to potential impacts the construction and operation of the Wind Farm.

The layout for the Bodangora Wind Farm currently involves 37 sites for wind turbines, each three bladed turbine having a generation capacity of between 1.8 to 3 megawatts and a total height of 125-150 meters above ground level. The wind farm site is located in pastoral country along ridges to the east of the Bodangora Village and to the west of Spicers Creek (approximately 15km East of Wellington). Preliminary turbine coordinates are provided in Table 1. A 33kV/132kV substation will be located at the south eastern part of the wind farm site and will include two large transformers.

At this stage, the project proponent, Bodangora Wind Farm Pty Ltd, is targeting to have the Environmental Assessment completed and lodged with NSW Department of Planning in Q.4. 2011. Provided that approval is obtained for the development and that Bodangora Wind Farm Pty Ltd proceeds with the project, the earliest date for construction of the wind farm will be in 1<sup>st</sup> half of 2013. The wind farm would operate for about 20 years or longer.

**Figure 1** provides the preliminary wind turbine layout within the Bodangora Wind Farm project area. The turbine locations (Table 1) have not been finalised yet and could be subject to micro-siting to address various site issues or consultation with stakeholders. The actual coordinates of each turbine and the details of the ground level, tower height and rotor dimensions will only be finalised following the gaining of Project Approval, appointment of a project contractor and with the benefit of additional results of energy modeling and siting studies.

Should you have any comments on the current form of the proposal or wish to discuss the proposal further, please feel free to contact me at (02) 8031 9914 or e-mail [frank.boland@infigenenergy.com](mailto:frank.boland@infigenenergy.com)

Regards.

A handwritten signature in black ink that reads "FJ Boland".

**Frank Boland**  
Development Manager

**Infigen Energy  
Development Pty Ltd**  
Level 22, 56 Pitt Street  
Sydney NSW 2000  
Australia  
T +61 2 8031 9900  
F +61 2 9247 6086  
[www.infigenenergy.com](http://www.infigenenergy.com)



Table 1. Preliminary Layout Co-ordinates

Aust UTM GDA94			
X	Y	Z	User label
702543	6408438	640	WTG-08
690990	6411498	500	WTG-10
698211	6412679	600	WTG-12
698831	6413115	580	WTG-13
695291	6414133	540	WTG-15
697255	6411811	600	WTG-16
699713	6412565	608	WTG-17
699560	6411787	640	WTG-18
699518	6412163	638.2	WTG-19
696649	6412773	595.9	WTG-20
696262	6413204	580	WTG-21
696260	6412508	595	WTG-22
696086	6411834	600	WTG-23
695086	6412384	575	WTG-24
694977	6415650	520	WTG-25
694944	6414839	535.3	WTG-26
694935	6415159	528.9	WTG-27
694526	6411184	560	WTG-28
694275	6414144	540	WTG-29
694083	6411772	573.5	WTG-30
694025	6414477	538.4	WTG-31
693448	6416362	500	WTG-32
693423	6415324	520	WTG-33
693346	6411867	557.3	WTG-34
693193	6411552	548.8	WTG-35
692829	6414961	520	WTG-36
692599	6411960	540	WTG-37
692599	6416740	500	WTG-38
691963	6415040	500	WTG-39
691692	6416642	500	WTG-40
691672	6415899	500	WTG-41
690833	6413029	500	WTG-42
690466	6410294	500	WTG-43
689673	6412056	500	WTG-44
689646	6412574	500	WTG-45
689376	6413614	480	WTG-46
688635	6412811	480	WTG-47



3 November 2011

NSW Rural Fire Service (RFS)  
Locked Bag 17  
Granville NSW 2142  
**Sent by email: [development.assessment@rfs.nsw.gov.au](mailto:development.assessment@rfs.nsw.gov.au)**

### **Bodangora Wind Farm Proposal - Invitation to comment**

**Infigen Energy  
Development Pty Ltd**  
Level 22, 56 Pitt Street  
Sydney NSW 2000  
Australia  
T +61 2 8031 9900  
F +61 2 9247 6086  
[www.infigenenergy.com](http://www.infigenenergy.com)

This letter provides information on the proposed Bodangora Wind Farm and seeks comment on the proposal in relation to potential impacts the construction and operation of the Wind farm may have upon Rural Fire Service operations and bushfire risks in the project area.

The layout for the Bodangora Wind Farm currently involves 37 sites for wind turbines, each three bladed turbine having a generation capacity of between 1.8 to 3 megawatts and a total height of 125-150 meters above ground level. The wind farm site is located in pastoral country along ridges to the east of the Bodangora Village and to the west of Spicers Creek (approximately 15km East of Wellington). Preliminary turbine coordinates are provided in Table 1. A 33kV/132kV substation will be located at the south eastern part of the wind farm site and will include two large transformers.

At this stage, the project proponent, Bodangora Wind Farm Pty Ltd, is targeting to have the Environmental Assessment completed and lodged with NSW Department of Planning in Q.4. 2011. Provided that approval is obtained for the development and that Bodangora Wind Farm Pty Ltd proceeds with the project, the earliest date for construction of the wind farm will be in 1<sup>st</sup> half of 2013. The wind farm would operate for about 20 years or longer.

**Figure 1** provides the preliminary wind turbine layout within the Bodangora Wind Farm project area. The turbine locations (Table 1) have not been finalised yet and could be subject to micrositing to address various site issues or consultation with stakeholders. The actual coordinates of each turbine and the details of the ground level, tower height and rotor dimensions will only be finalised following the gaining of Project Approval, appointment of a project contractor and with the benefit of additional results of energy modeling and siting studies. It is proposed that the project contractor when appointed will prepare a construction environmental plan including a Bushfire Risk Management sub plan developed in consultation with RFS.

Should you have any comments on the current form of the proposal, particularly issues relating to Rural Fire Service operations and other fire related concerns in the project area or matters that you feel should be addressed by the Environmental Assessment, please feel free to contact me at (02) 8031 9914 or e-mail [frank.boland@infigenenergy.com](mailto:frank.boland@infigenenergy.com)

Regards.

A handwritten signature in black ink that reads "F J Boland".

**Frank Boland**  
Development Manager



Table 1. Preliminary Layout Co-ordinates

Aust UTM GDA94			
X	Y	Z	User label
702543	6408438	640	WTG-08
690990	6411498	500	WTG-10
698211	6412679	600	WTG-12
698831	6413115	580	WTG-13
695291	6414133	540	WTG-15
697255	6411811	600	WTG-16
699713	6412565	608	WTG-17
699560	6411787	640	WTG-18
699518	6412163	638.2	WTG-19
696649	6412773	595.9	WTG-20
696262	6413204	580	WTG-21
696260	6412508	595	WTG-22
696086	6411834	600	WTG-23
695086	6412384	575	WTG-24
694977	6415650	520	WTG-25
694944	6414839	535.3	WTG-26
694935	6415159	528.9	WTG-27
694526	6411184	560	WTG-28
694275	6414144	540	WTG-29
694083	6411772	573.5	WTG-30
694025	6414477	538.4	WTG-31
693448	6416362	500	WTG-32
693423	6415324	520	WTG-33
693346	6411867	557.3	WTG-34
693193	6411552	548.8	WTG-35
692829	6414961	520	WTG-36
692599	6411960	540	WTG-37
692599	6416740	500	WTG-38
691963	6415040	500	WTG-39
691692	6416642	500	WTG-40
691672	6415899	500	WTG-41
690833	6413029	500	WTG-42
690466	6410294	500	WTG-43
689673	6412056	500	WTG-44
689646	6412574	500	WTG-45
689376	6413614	480	WTG-46
688635	6412811	480	WTG-47





3 November 2011

Technical Services Manager  
Wellington Shire Council  
Po Box 62  
Wellington NSW 2820

### **Bodangora Wind Farm Proposal - Invitation to comment**

**Infigen Energy  
Development Pty Ltd**  
Level 22, 56 Pitt Street  
Sydney NSW 2000  
Australia  
T +61 2 8031 9900  
F +61 2 9247 6086  
[www.infigenenergy.com](http://www.infigenenergy.com)

This letter provides information on the proposed Bodangora Wind Farm and seeks comment on the proposal from the Wellington Council, as the operators of the Wellington Airport, in relation to potential impact the construction and operation of the Wind Farm.

The layout for the Bodangora Wind Farm currently involves 37 sites for wind turbines, each three bladed turbine having a generation capacity of between 1.8 to 3 megawatts and a total height in the order of 125-150 meters above ground level. The height of the turbines is made up of a hub height in the range of 80 to 100 meters and rotor diameter up to 112 meters (blade length of up to 56 meters). The wind farm site is located in pastoral country along ridges to the east of the Bodangora Village and to the west of Spicers Creek (approximately 15km East of Wellington).

The nearest airport is the Wellington Airport, which is to the south west of the project. The nearest turbine (WTG 43) is over 5km from the main runway and in a perpendicular direction (NE). Based on the distances involved, topography of the locality, the Aerodrome and OLS arrangement and location and height of the proposed wind turbine structures, it is expected that any air traffic using the Wellington Airport would be well clear of the wind turbine structures.

At this stage, the project proponent, Bodangora Wind Farm Pty Ltd, is targeting to have the Environmental Assessment completed and lodged with NSW Department of Planning in Q.4. 2011. Provided that approval is obtained for the development and that Bodangora Wind Farm Pty Ltd proceeds with the project, the earliest date for construction of the wind farm will be in 1<sup>st</sup> half of 2013. The wind farm would operate for about 20 years or longer.

**Figure 1** provides the preliminary wind turbine layout within the Bodangora Wind Farm project area. The turbine locations (Table 1) have not been finalised yet and could be subject to micro-siting to address various site issues or consultation with stakeholders. The actual coordinates of each turbine and the details of the ground level, tower height and rotor dimensions will only be finalised following the gaining of Project Approval, appointment of a project contractor and with the benefit of additional results of energy modelling and siting studies.

To ensure that any air safety issues have been identified during the planning stage for the proposed wind farm, your comments are sought on the proposed array relative to aircraft operational considerations for the locality. CASA, AirServices Australia, Department of Defense and the Aerial Agricultural Association (AAAA) will be separately consulted to gain their comments on the proposal.



Should you have any comments on the current form of the proposal please feel free to contact me at (02) 8031 9914 or e-mail [frank.boland@infigenenergy.com](mailto:frank.boland@infigenenergy.com)

Regards.

A handwritten signature in dark blue ink that reads "Frank Boland". The signature is written in a cursive style, with the first letters of each word being capitalized and prominent.

**Frank Boland**  
Development Manager



Table 1. Preliminary Layout Co-ordinates

Aust UTM GDA94			
X	Y	Z	User label
702543	6408438	640	WTG-08
690990	6411498	500	WTG-10
698211	6412679	600	WTG-12
698831	6413115	580	WTG-13
695291	6414133	540	WTG-15
697255	6411811	600	WTG-16
699713	6412565	608	WTG-17
699560	6411787	640	WTG-18
699518	6412163	638.2	WTG-19
696649	6412773	595.9	WTG-20
696262	6413204	580	WTG-21
696260	6412508	595	WTG-22
696086	6411834	600	WTG-23
695086	6412384	575	WTG-24
694977	6415650	520	WTG-25
694944	6414839	535.3	WTG-26
694935	6415159	528.9	WTG-27
694526	6411184	560	WTG-28
694275	6414144	540	WTG-29
694083	6411772	573.5	WTG-30
694025	6414477	538.4	WTG-31
693448	6416362	500	WTG-32
693423	6415324	520	WTG-33
693346	6411867	557.3	WTG-34
693193	6411552	548.8	WTG-35
692829	6414961	520	WTG-36
692599	6411960	540	WTG-37
692599	6416740	500	WTG-38
691963	6415040	500	WTG-39
691692	6416642	500	WTG-40
691672	6415899	500	WTG-41
690833	6413029	500	WTG-42
690466	6410294	500	WTG-43
689673	6412056	500	WTG-44
689646	6412574	500	WTG-45
689376	6413614	480	WTG-46
688635	6412811	480	WTG-47

---

**From:** Frank Boland <Frank.Boland@infigenenergy.com>  
**Sent:** Tuesday, 13 December 2011 10:11 AM  
**To:** Darren Glover  
**Subject:** RE: Bodangora Wind Farm - Exploration Permits  
**Attachments:** Bodangora Turbine Locations.xlsx

Hi Darren,

Thanks for your email, I've attached the co-ordinates for Bodangora.

Once you've had a chance to review the layout with your exploration activity it should be easier to work out a way forward. There are several options we can consider if there is a conflict between the two land uses. What we have done in the past is either;

- Micro-site the turbines
- Reach an agreement about compensation to relocate turbines if the tenement becomes viable after the turbines are constructed
- Or let the Department of Planning make a determination based on the current viability of both resources.

Happy to discuss further after you've had a chance to review.

Regards. Frank

Frank Boland  
M +61 423 778 125

---

**From:** Darren Glover [mailto:Darren.Glover@gfexpl.com]  
**Sent:** Monday, 12 December 2011 2:14 PM  
**To:** Frank Boland  
**Subject:** RE: Bodangora Wind Farm - Exploration Permits

G'day Frank,

Would you be able to send me the coordinates of the proposed turbines (GDA East and Northing would be best) in excel so we can plot up with our current work.

From first pass review we do have some prospects likely to be coincident with some turbines. What is the process if we find a conflict between prospectivity and proposed turbines?

Regards,

**Darren Glover**  
Project Manager - East Lachlan  
Gold Fields Australasia

**Phone:** (02) 6361 9200  
**Fax:** (02) 6361 2092  
**Mob:** 0427 003 869  
**Email:** [darren.glover@gfexpl.com](mailto:darren.glover@gfexpl.com)  
**Web:** [www.goldfields.co.za](http://www.goldfields.co.za)

---

**From:** Frank Boland [mailto:Frank.Boland@infigenenergy.com]  
**Sent:** 12 December 2011 13:51

**To:** Gordon Barnes  
**Cc:** Darren Glover  
**Subject:** RE: Bodangora Wind Farm - Exploration Permits

Thanks Gordon,

Darren – please see note below and also the maps attached. Feel free to give me a call if you wish to discuss.

Regards. Frank

Frank Boland  
M +61 423 778 125

---

**From:** Gordon Barnes [mailto:gordon.barnes@clancyexploration.com]  
**Sent:** Monday, 12 December 2011 12:29 PM  
**To:** Frank Boland  
**Cc:** Darren Glover  
**Subject:** Re: Bodangora Wind Farm - Exploration Permits

Hi Frank

The Clancy tenement EL6178 is part of a Joint Venture with Gold Fields Limited, who is the managing the project on behalf of the Joint Venture. You will need to liaise with the project manager, Darren Glover (cc'd above), regarding restrictions etc.

Regards,  
Gordon

On 9 December 2011 17:40, Frank Boland <[Frank.Boland@infigenenergy.com](mailto:Frank.Boland@infigenenergy.com)> wrote:

Dear Gordon,

I've been given your details by the NSW Department of Trade and Investment following the adequacy review of our Bodangora Wind Farm Development Application. The main purpose of this email is gain a better understanding of your tenement in that area and discuss whether or not any of your testing will be restricted by the proposed wind farm.

I've also attached a copy of our current site layout and a scan of the tenements in the area. For your information I have also consulted with Alkane Resources and Somerset Minerals Pty Ltd.

Regards. Frank

Frank Boland

Infigen Energy

Level 22, 56 Pitt Street, Sydney NSW 2000



T [+61 2 8031 9900](tel:+61280319900) F [+61 2 9247 6086](tel:+61292476086) D [+61 2 8031 9914](tel:+61280319914) M [+61 423 778 125](tel:+61423778125)

[www.infigenenergy.com](http://www.infigenenergy.com)

**Error! Filename not specified.**

---

This email is confidential and may contain privileged information. Any confidentiality or privilege is not waived or lost if this email has been sent to you by mistake. If you are not the intended recipient, you must not disclose or use the information contained in it. If you have received this email in error, please notify the sender immediately by return email and delete all copies of this email and all attachments to it from your systems. This email is also subject to copyright. No part of it should be reproduced, adapted or communicated without the written consent of the copyright owner. Any personal information in this email must be handled in accordance with any relevant personal data protection laws and regulations. Emails may be interfered with, may contain computer viruses or other defects and may not be successfully replicated on other systems. We give no warranties and accept no liability in relation to these matters. Please contact [+61 2 8031 9900](tel:+61280319900) or email [info@infigenenergy.com](mailto:info@infigenenergy.com) if you need assistance.

--

**Gordon Barnes**  
Managing Director



**Clancy Exploration Limited**

**ABN:** 65 105 578 756 **ASX:** CLY

**Address:** 3 Corporation Place, Orange 2800 **Phone:** 02 6361 1285 **Fax:** 02 6361 1202

**Email:** [gordon.barnes@clancyexploration.com](mailto:gordon.barnes@clancyexploration.com) **Web:** <http://www.clancyexploration.com>

This email message is intended only for the recipient(s) and contains information that may be confidential and/or subject to copyright. If you are not the intended recipient please notify the sender by reply email. In this case, you should not read, print, re-transmit, store or act in reliance on this email or its attachments and all copies should be destroyed. You should only re-transmit or distribute the material if you are authorised to do so. No representation is made that this email or any attachments are free of viruses.

---

This email is confidential and may contain privileged information. Any confidentiality or privilege is not waived or lost if this email has been sent to you by mistake. If you are not the intended recipient, you must not disclose or use the information contained in it. If you have received this email in error, please notify the sender immediately by return email and delete all copies of this email and all attachments to it from your systems. This email is also subject to copyright. No part of it should be reproduced, adapted or communicated without the written consent of the copyright owner. Any personal information in this email must be handled in accordance with any relevant personal data protection laws and regulations. Emails may be interfered with, may contain computer viruses or other defects and may not be successfully replicated on other systems. We give no warranties and accept no liability in relation to these matters. Please contact +61 2 8031 9900 or email [info@infigenenergy.com](mailto:info@infigenenergy.com) if you need assistance.

---

**From:** Frank Boland <Frank.Boland@infigenenergy.com>  
**Sent:** Friday, 9 December 2011 5:10 PM  
**To:** gordon.barnes@clancyexploration.com  
**Subject:** Bodangora Wind Farm - Exploration Permits  
**Attachments:** Bodangora Exploration Permits.pdf; 12992\_Fig 1.3 Project Overview\_A3\_1.0.pdf

Dear Gordon,

I've been given your details by the NSW Department of Trade and Investment following the adequacy review of our Bodangora Wind Farm Development Application. The main purpose of this email is gain a better understanding of your tenement in that area and discuss whether or not any of your testing will be restricted by the proposed wind farm.

I've also attached a copy of our current site layout and a scan of the tenements in the area. For your information I have also consulted with Alkane Resources and Somerset Minerals Pty Ltd.

Regards. Frank

Frank Boland

Infigen Energy  
Level 22, 56 Pitt Street, Sydney NSW 2000  
T +61 2 8031 9900 F +61 2 9247 6086 D +61 2 8031 9914 M +61 423 778 125  
[www.infigenenergy.com](http://www.infigenenergy.com)



---

**From:** Frank Boland <Frank.Boland@infigenenergy.com>  
**Sent:** Wednesday, 7 December 2011 9:55 AM  
**To:** 'mart.rampe@harvestscientific.com.au'  
**Subject:** Kaiser Mine and the Bodangora Wind Farm  
**Attachments:** Kaiser Mine - WTG 44 & 45.pdf; Trade and Investment comments - 6 Dec 11.pdf; 12992\_Fig 1.3 Project Overview\_A3\_1.0.pdf

Dear Mart,

Good to speak to you earlier, when it is more convenient could you please call me back on the numbers below.

The main reason for the call was to discuss the Kaiser Mine in a bit more detail and to get more of an understanding on the probability of the resource coming into production. Assuming it does come in to production in the next 35 years, we need to discuss whether the current position of the proposed wind turbines (#44 & 45) are going to interfere with this.

To aid with our discussions, I've attached the following:

- Project Layout
- Map showing Kaiser Mine and turbines 44 and 45
- Extract from the Department of Planning with your comments

Regards. Frank

Frank Boland

Infigen Energy  
Level 22, 56 Pitt Street, Sydney NSW 2000  
T +61 2 8031 9900 F +61 2 9247 6086 D +61 2 8031 9914 M +61 423 778 125  
[www.infigenenergy.com](http://www.infigenenergy.com)





**Environment,  
Climate Change  
& Water**

Our reference:  
Contact:

DOC11/40875, FIL08/196-08  
Samantha Wynn, 02 68835330

Mr Frank Boland  
Infigen Energy Development Pty Ltd  
Level 2, 56 Pitt Street  
SYDNEY NSW 2000

13<sup>08</sup> September 2011

Dear Mr Boland

Thank you for your letter dated 23 August 2011 to the Office of Environment and Heritage (OEH) seeking comments in relation to the proposed Bodangora Wind Farm development near Wellington, NSW.

OEH acknowledges that the proposed development will consist of 37 wind turbine sites and development of associated infrastructure between the Bodangora Village and Spicers Creek, approximately 15km East of Wellington.

OEH has previously identified (Department of Environment, Climate Change and Water letter to the then Department of Planning dated 25 October 2010) that the proponent should address the issues as summarised below and detailed in the attachments to this letter:

- the impacts of the proposal on Aboriginal Cultural Heritage;
- the impacts of the proposal on flora/fauna/threatened species (particularly birds);
- the impacts of the proposal on drainage and water quality; and
- the actions that will be taken to avoid or mitigate impacts or compensate to prevent unavoidable impacts identified above.

If you require any additional information, or wish to discuss the matter further, please contact Ms Samantha Wynn at the Dubbo office of OEH on 02 6883 5330.

Yours sincerely

**MATTHEW CORRADIN**  
**A/Head Pesticides, Operations and Planning**  
**Environment Protection and Regulation**  
**Office of Environment and Heritage**  
**Department of Premier and Cabinet**

CC: Dr Kevin Mills, Kevin Mills and Associates, 12 Hyman Place, Jamberoo NSW 2533

Encl: Attachment A: DECCW letter dated 25 October 2010.  
Attachment B: EIS Requirements – CULTURAL HERITAGE.  
Attachment C: EIS Requirements – FLORA AND FAUNA.

PO Box 2111 Dubbo NSW 2830  
Level 1 48-52 Wingewarra Street Dubbo NSW  
Tel: (02) 6883 5312 Fax: (02) 6884 8675  
ABN 30 841 387 271  
[www.environment.nsw.gov.au](http://www.environment.nsw.gov.au)



## Environment, Climate Change & Water

Our reference: FIL08/196-07,  
DOC10/47962  
Contact: Brad Tanswell, 68835330

Director Infrastructure Projects  
Department of Planning  
GPO Box 39  
SYDNEY NSW 2001

Attention: Anna Timbrell

**COPY**

Dear Mr Keary

**RE: PART 3A: BODANGORA WIND FARM – REQUEST FOR ENVIRONMENTAL ASSESSMENT  
REQUIREMENTS (APPLICATION REFERENCE MP 10\_0157)**

I refer to your letter dated 19 October 2010 requesting the Department of Environment, Climate Change and Water (DECCW) to make a written submission to the Department of Planning regarding the Director-General's Requirements (DGR's) for the proposed Infigen Energy Development Pty Ltd wind farm at Bodangora.

DECCW wishes to indicate at this point that based on the information provided, the proposal will not require an environment protection licence under Schedule 1 of the Protection of the Environment Operations Act 1997 (POEO Act). However, DECCW maintains a strong interest due to the potential presence of items of Aboriginal Cultural Heritage and the presence of Native Vegetation/Endangered Ecological Communities at the proposed site.

In reviewing the Preliminary Environmental Assessment, the proponent has identified the following as the key issues of the proposal (related to DECCW's area of interest):

- Heritage (Aboriginal);
- Biodiversity (Flora/Fauna/Threatened Species);
- Site Drainage (Water Quality Impacts);

DECCW agrees that these 3 issues must be considered key issues. Furthermore, in order to facilitate the efficient assessment of this proposal, DECCW has reviewed the Draft DGR's provided by the Department of Planning and is generally supportive of the DGR's.

However it should be noted that some of the key guidelines referenced in the draft EARs have been superseded or updated, and as such these more up to date documents should be referenced in preference to the older documents. These out of date references are listed in the table provided as Appendix 1, beside the most appropriate and recent reference. Relevant additional references are also listed.



DECCW would also like to offer the following specific comments.

## 1. Aboriginal Cultural Heritage

DECCW asks that the wording under the title Indigenous Heritage in the final DGR's be changed to read as follows: 'the EA must include an assessment *that identifies all items of Aboriginal Cultural Heritage at the site of the proposed wind farm* and the potential impact of the project on indigenous heritage values...

DECCW asks that the final DGR's make reference to the new Aboriginal Cultural Heritage consultation requirements for proponents 2010 (DECCW, 2010).

## 2. Threatened Species/Endangered Ecological Communities

Given that the proposed wind farm is considered to be an environmental project, DECCW asks that the final DGR's reflect a position that encourages first and foremost, that Native Vegetation/Ecological Endangered Communities be protected by planning the development at the proposed site in such a way that will not require any remnant vegetation to be removed/destroyed inline with State Plan Natural Resource Management targets.

The assessment will also need to emphasise consideration of flight paths, roost sites and nesting areas for aerial species (including bats, waterbirds, owls, raptors and other aerial feeding and migratory species) that may be adversely affected by the operation of the facility.

In regards to potential impacts, a monitoring plan and mitigation strategy to deter impacts on birds and bats should be developed. The impact assessment and recommendations should be consistent with current Australian Wind Energy Association best practice guidelines. The following process should be adopted for the project.

The EA must follow the 'Draft Guidelines for Threatened Species Assessment. These guidelines deal specifically with applications under Part 3A of the EP&A Act.

### *Ecosystems*

- a) The EA must document each of the ecosystems (using vegetation communities as a surrogate) that will be impacted.
- b) For each vegetation community, the significance of impact must be assessed. The intensity and extent of impact should be evaluated and reported against the current status of each ecosystem within the context of the landscape and region in which each respective ecosystem is located.
- c) Fragmentation and impacts of a reduction in habitat area must be quantified and assessed for those species most sensitive to these effects.
- d) The EA must investigate the use of previously cleared corridors so that biodiversity impacts are avoided wherever possible.

### *Threatened species, communities and their habitats*

- e) A field survey of the site should be conducted and documented in accordance with these guidelines.
- f) Likely impacts on threatened species and their habitat need to be assessed, evaluated and reported on. The assessment should specifically report on the considerations listed in Step 3 of the draft guideline.
- g) The EA must describe the actions that will be taken to avoid or mitigate impacts or compensate to prevent unavoidable impacts of the project on threatened species and their

habitat. This should include an assessment of the effectiveness and reliability of the measures and any residual impacts after these measures are implemented.

- h) Step 4 of the draft guidelines requires that where measures to avoid or mitigate are not possible, offset strategies need to be considered. Unavoidable residual impacts must be countered by biodiversity offsets that are secure in the long term so that a "maintain or improve" outcome is achieved. The opportunities, and the costs and benefits of offsetting should be evaluated and an offsetting strategy outlined. DECCW has developed/ is currently developing tools/ methodologies (available on DECCW website) that provide a consistent approach to evaluating suitable offsets.
- i) The EA needs to clearly state whether it meets each of the key thresholds set out in Step 5 of the draft guideline.

Recent international scientific literature (see footnote<sup>1</sup> for an example) suggests that bats can be adversely impacted by rapid air-pressure reduction near moving turbine blades. While this is incorporated in the draft EARs, DECCW is concerned about the potential negative impacts that this phenomenon could potentially have on threatened bat species. The EARs should therefore emphasise the importance of this issue by requiring the proponent to specifically address this issue in the EA, by:

- Describing the potential nature and extent of barotrauma impacts on threatened bat species across the project area;
- Assessing the significance of these impacts on threatened bat species in the context of any other identified impacts on these species; and
- Describing any actions that will be taken to avoid or mitigate these impacts.

### 3. Impacts of the Project on Native Vegetation

While DECCW understands that pursuant to s.75U(1)(e) of the EP&A Act, authorisation referred to in section 12 of the *Native Vegetation Act 2003* (NV Act) is not required, the EA must address the potential impact of the project on native vegetation to enable the definition of suitable off sets. The EA must therefore address the following issues, specifically:

- The area (in hectares) of native vegetation that will have to be cleared to accommodate the proposed development;
- The floristics and botanical communities of native vegetation that will need to be cleared;
- The extent of native vegetation on the site which may be remnant vegetation, protected regrowth or regrowth as defined by the NV Act; and
- The definition of suitable like for like offsets to improve or maintain environmental outcomes for the lawful clearing of native vegetation in relation to the four environmental values: water quality, soils, salinity and biodiversity (including threatened species). The proponent may wish to consider utilising the BioBanking framework to establish and maintain any required offsets.

### 4. Impacts of the Project on Water Quality

In addition to the water quality elements contained with the draft EARs, the EA should identify and assess any additional potential impacts that the project may have on surface or groundwater quality (e.g. associated with fuel spills, oil spills, transformer failures etc.) and incorporate mitigation measures to avoid or adequately control the associated risks.

<sup>1</sup> Baerwald, E.F., D'Amours, G.H., Klug, B.J. and Barclay, R.M.R. (2008) "Barotrauma is a significant cause of bat fatalities at wind turbines" *Current Biology*, Vol. 18, No. 16, Cell Press, Cambridge MA.

## 5. Overall Environmental Impacts of the Project

DECCW notes the Preliminary Environmental Assessment indicates that *gravel and sand for the construction of roadways will be sourced from wherever possible. Landholders and rural neighbours will be provided with the opportunity to provide material in the first instance.*

Should the proponent wish to establish new gravel pits, the full environmental impact to these areas, including but not limited to impacts to biodiversity and Aboriginal Cultural Heritage must be fully assessed.

Under the Protection of the Environment Operations Act 1997 (the POEO Act) an environment protection licence with the EPA would be required where it is proposed to undertake a "scheduled activity" or "scheduled development works" under Schedule 1 of the POEO Act 1997. In relation to any extractive activities, the proponent should refer to the triggers listed under "extractive industries" and "crushing, grinding or separating" under Schedule 1 of the POEO Act 1997 to determine if an environment protection licence with the EPA is required.

If you have any further enquiries regarding the above advice please contact myself at the Dubbo Office of DECCW by telephoning (02) 6883 5330.

Yours sincerely



25/10/10

**BRAD TANSWELL**

**Acting Head Pesticides, Operations and Planning Dubbo  
Environment Protection and Regulation Group**

Enclosure: Attachment 1 – Updated and Additional References

## Appendix 1 – Updated and Additional References

Superseded References	New or Additional References	Issue
	Assessment of Significance Guidelines (DECC, August 2007)	Relevant Guidelines – For Reference Flora & Fauna
Guidelines for Aboriginal Cultural Heritage Impact Assessment and Community Consultation (DEC, July 2005)	Aboriginal Cultural Heritage Consultation Requirements for Proponents (DECCW, April 2010)	Relevant Guidelines – For Reference Indigenous Heritage
	Threatened Species Survey & Assessment Guidelines: Field Survey Methods for Fauna – Amphibians (DECC, 2009)	Relevant Guidelines – For Reference, Ecology
	Biodiversity Principles and assessment methodologies:  <a href="http://www.environment.nsw.gov.au/biobanking/">http://www.environment.nsw.gov.au/biobanking/</a>  <a href="http://www.environment.nsw.gov.au/biocertification/offsets.htm">http://www.environment.nsw.gov.au/biocertification/offsets.htm</a>  <a href="http://www.environment.gov.au/epbc/publications/threatened-bats.html">http://www.environment.gov.au/epbc/publications/threatened-bats.html</a>  <a href="http://www.environment.gov.au/epbc/publications/threatened-birds.html">http://www.environment.gov.au/epbc/publications/threatened-birds.html</a>	Relevant Guidelines – For Reference, Ecology
	Threatened Species Website:  <a href="http://www.threatenedspecies.environment.nsw.gov.au/index.aspx">http://www.threatenedspecies.environment.nsw.gov.au/index.aspx</a>	Relevant Guidelines – For Reference, Ecology
	National Water Quality Management Strategy: Australian Guidelines for Water Quality Monitoring and Reporting (ANZECC, 2000)	Relevant Guidelines – For Reference, Water Quality
	Relevant Catchment Action Plans and Water Quality/River Flow Objectives	Relevant Guidelines – For Reference, Water Quality
	Managing Urban Stormwater: Soils and Construction, Volume 2A: Installation of Services (DECC, 2008)	Relevant Guidelines – For Reference, Water Quality

## ATTACHMENT B: EIS REQUIREMENTS - CULTURAL HERITAGE

Aboriginal sites are widespread throughout New South Wales. There is considerable regional variation in the types of sites, their age, their contents and how they are situated on the landscape. It is important that these sites are conserved as fragile and irreplaceable Aboriginal Cultural Heritage. In some cases there is Aboriginal oral tradition concerning specifically significant sites or landscape features.

The Office of Environment and Heritage (OEH) has a statutory role in the protection and preservation of Aboriginal sites. This includes reviewing and assessing the Aboriginal Cultural Heritage and archaeological aspects of environmental studies, as well as a regulatory role in their impact or destruction.

The EIS or other environmental assessment should consider Aboriginal Cultural Heritage, even if the area is disturbed in some way. The EIS should consider:

- Accessing OEH's Aboriginal Heritage Information Management System (AHIMS) in the initial planning stage. This is to determine if there are any already known sites which will require protection, or if there is a need for a Section 87 Permit or Section 90 Consent (see below). The AHIMS database is not a conclusive indicator that sites may exist in the development area. Information from the AHIMS database may be made available by the AHIMS Registrar. For contact details and general information about AHIMS, please refer to Sub Attachment 1.
- The Aboriginal community (which may include Local Aboriginal Land Councils, Native Title Groups and Elders Groups) needs to be consulted so that they can be advised that there may be impact to sites relevant to their heritage. There also may be knowledge in the community about sites in the development area, particularly those related to oral tradition. This process of Aboriginal consultation should be maintained throughout the entire EIS procedure. For further information as to the consultation requirements, please refer to the following website:  
<http://www.environment.nsw.gov.au/licences/consultation.htm>
- An assessment of the need for an archaeological survey, and if so, to what level of detail. This should be defined by a study plan or research design. In most cases, an on-the-ground systematic archaeological investigation will be needed. If there is a likelihood of buried sites not visible on the surface, a Section 87 Permit from OEH may be needed for sub-surface testing.
- The outcome of the survey is to determine what sites can be avoided, and what ones cannot. Another objective is to assess the significance of the sites. It maybe that damage or destruction of some sites is unacceptable, or that special safeguards are needed for others.

A broad overview of the Aboriginal Heritage Assessment process is contained in Sub Attachment 2.

If Aboriginal objects/places are known to be directly or indirectly adversely affected, the Proponents will need to apply for, and be issued, a Section 87 Permit or a Section 90 Consent by the Director-General of OEH to comply with the National Parks and Wildlife Act (1974). A necessary part of this is a written statement detailing the concerns and opinion of the proposed impact from the Aboriginal community.

Normally, Special Conditions are attached. These may include provisions for impact minimisation and salvage. Salvage is a form of mitigation by documenting in detail what is to be lost by the impact. Frequently it involves archaeological excavation and analysis, or other types of recovery and study.

Alternatively the development might be redesigned by the Proponent to accommodate and protect the site(s). The archaeological survey, analysis and reporting, as well as the negotiation with the Aboriginal community, can be a lengthy process. If a Permit for salvage is needed, then this can add on more time. It is important to begin the study for Aboriginal site impacts in the very earliest stages to avoid delays in the developments' timeline.



## **SUB ATTACHMENT 1**

### ***THE ABORIGINAL HERITAGE INFORMATION MANAGEMENT SYSTEM GENERAL INFORMATION***

---

The Office of Environment and Heritage (OEH) maintains the Aboriginal Heritage Information Management System (formerly the Aboriginal Sites Register of NSW). This database includes a computer database and site recording cards for all recorded Aboriginal sites in NSW, in addition to a database index of archaeological reports and a library of these reports. Information from the database may be made available for a variety of uses.

#### **What information is available?**

Information relating to recorded Aboriginal sites in a particular area may be made available upon request. The information is generally available in the form of a standard report from the Register database. This report lists all recorded sites within and/or surrounding the area of interest, with each record including the site identifying number, site type, site location and Australian Map Grid co-ordinates, date of recording and the name of the recorder of the site.

If the area of interest is particularly large (e.g. a river catchment), a Data Licence Agreement may be required. This agreement is a legal contract document between the Director-General of the OEH and a named client, and is designed to ensure that any data supplied under the agreement is used appropriately.

In some cases, written support from the relevant Local Aboriginal Land Council may be required before information can be provided from the Register.

#### **How is the data provided?**

Site information will generally be provided as a standard computer print out, however, digital computer formats on disk may be available for specific purposes.

#### **Is there a charge for data?**

The cost for supply of a standard report is \$30 per search area. An urgent database search may be conducted for \$60. More complex reports may incur an additional charge.

In particular circumstances there may be no charge for a report (e.g. for Aboriginal Land Councils, research purposes etc.). The waiving of any charge requires discussion with the Aboriginal Sites Registrar.

There is no charge imposed for a Data Licence Agreement, however, any data supplied under a Licence Agreement will generally be charged at the current "cost of transfer".

#### **Are there any limitations in the data?**

It is essential to note that a report from the Register does not represent a comprehensive list of all Aboriginal sites in a specified area. A report lists recorded sites only. In any given area there may be a number of undiscovered and/or unrecorded sites. As a result of this limitation, and the fact that all Aboriginal

sites are protected under NSW legislation, the NPWS may recommend that a survey for Aboriginal sites is conducted where development is proposed.

Location details are recorded as grid references. It is important to note that there *may* be errors in these recordings. If accurate site locations are required it may be necessary to confirm the locations on the ground.

If the information provided is to be used for ongoing purposes, it is recommended that regular updates are obtained as new records are continually being added to the database.

#### **How to obtain Aboriginal sites data**

To obtain information about recorded Aboriginal sites, a written request should be forwarded to the Aboriginal Sites Registrar (a request form is available if required). All requests must include;

- Company/organisation name (if applicable)
- Contact name, phone number and address details
- Purpose for which the information is required
- Copy of a topographic map with the area of interest clearly marked
- A cheque for \$30 per search area, made out to the OEH (unless other arrangements have been made with the Registrar)

Applications should be forwarded to:

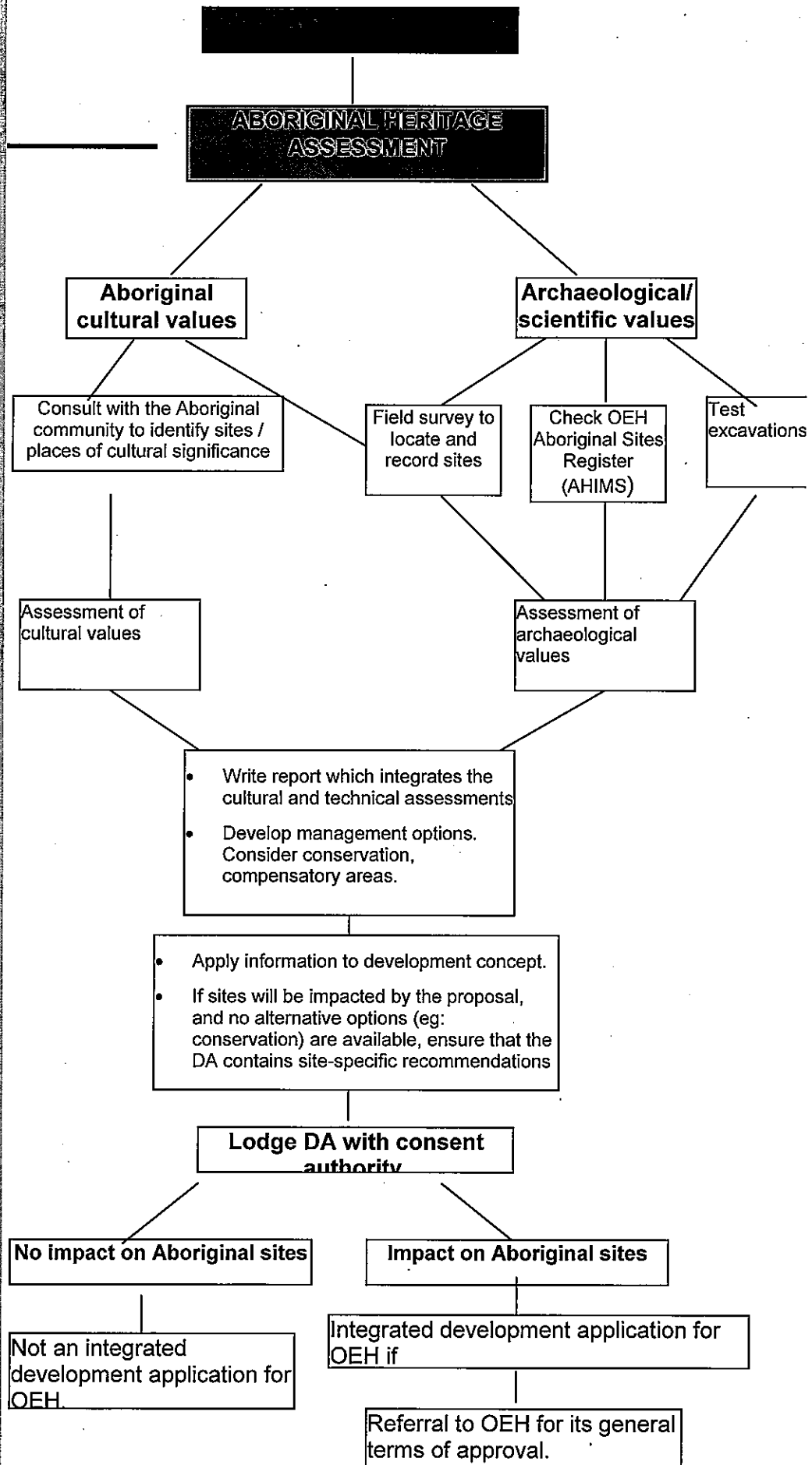
**The Aboriginal Sites Registrar  
Cultural Heritage Division  
Office of Environment and Heritage  
PO Box 1967  
Hurstville, NSW 2220.  
or fax (02) 9585 6094**

#### **Further information**

For further information about the Aboriginal Sites Register, please contact the Aboriginal Sites Registrar on 02 9585 6470, fax 02 9585 6094.

**PROCESS**

1. Development proposal.
2. Investigative studies and assessments. This could include: Aboriginal heritage, flora and fauna, hydrology, air, noise, social / economic etc.
3. For Aboriginal heritage, information is required about:
4. Information sources:  
NB: Test excavations may be required. This requires a permit from OEHL allow 8 weeks for processing.
5. Undertake assessment
6. Prepare report and recommend management options.
7. Apply this and information from other assessments to development concept and finalise development proposal. Avoiding impact on sites is the preferred strategy.
8. Lodgement of DA with consent authority
9. DA is an IDA if development will



## ATTACHMENT C: EIS REQUIREMENTS - FLORA AND FAUNA

### INTRODUCTION

The *Environmental Planning and Assessment Act (1979)* (EP&A Act) requires that proponents of a development/activity and the Consent/Determining Authorities adequately assess the impact of a development or activity in any Environmental Impact Assessment (EIA) documents. These EIA documents include:

- Statement of Environmental Effects (SoEE), or
- Review of Environmental Factors (REF), or
- Environmental Impact Statement (EIS).

These are introductory, generic specifications of the Office of Environment and Heritage (OEH) for an adequate assessment of the impacts of a development proposal on native flora and fauna (ie including protected and threatened species). However, OEH recognises that the scale and complexity of the project will to some extent, dictate the level of information that is required to address the questions posed below. Consequently, flora and fauna assessments need to be tailored to suit the proposal. For example, a development which is proposed on land which has already been totally (or substantially) cleared should address the issues raised below but the amount of work required to address these issues may be substantially less than if the area comprised undisturbed bushland and, therefore, of more significant wildlife habitat value. A preliminary assessment, including a desktop investigation and a preliminary site inspection, may indicate the need for a detailed survey of the site.

Aboriginal cultural heritage and archaeological sites may still be present on substantially disturbed areas and appropriate assessment of these is required. (Please refer to Attachment C for further information.)

**It is up to the proponent (and later the consent and/or determining authorities after appropriate consultation) to determine the detail and comprehensiveness of assessment required to form legally defensible conclusions regarding the impact of the proposal. The scale and intensity of the proposed development should dictate the detail of investigation.**

**It is important that all conclusions are supported by adequate data and that these data are clearly presented in EIA documentation.**

OEH will consider the following issues when reviewing an EIA document:

1. **Concerns** - What are OEH's concerns regarding the conservation of natural and cultural heritage in accordance with the relevant legislation? Is the proposal likely to affect natural and cultural heritage? How?
2. **Provision of Information** - Is adequate information provided for a valid assessment of the impacts?
3. **Validity of Conclusions** - Has the proponent arrived at valid conclusions as a result of the assessment of impacts?
4. **Recommended Conditions to Consent** - Should Consent or Approval be granted, what conditions (if any) are required to ensure that the project is developed, and thereafter managed in accordance with natural and cultural heritage conservation and the provisions of legislation administered by OEH?

Thus the EIA document should fully describe the existing environment including flora and fauna, so that future impacts can be properly assessed and then reviewed (eg during the public participation phase).

## **FLORA**

### **Background**

The Australian flora comprises many endemic taxa and is therefore unique in the world.

OEH is concerned at the extent to which vegetation has been cleared and otherwise modified in north-western NSW. This high level of modification has been highlighted in the National State of the Environment Reports (1996 and 2001). Evidence strongly suggests that many plant species and communities are threatened with extinction.

Although the proposed site may be disturbed by various landuses, any remnants of native vegetation are of significant natural heritage value, including riparian and wetland areas. The area of vegetation and habitat at the proposed site may provide an area of high biological diversity, high conservation value or may not be well represented or protected elsewhere. It may also act as a corridor or migratory route for wildlife, drought refuge habitat or have other important values.

The NSW community places a high value on those areas of native vegetation that remain. OEH is committed to the protection, appropriate management, and where necessary, rehabilitation of native vegetation. For these reasons, OEH considers that careful planning should precede any development that involves further vegetation clearance or other significant impact within areas of remnant vegetation.

Negative impacts to native vegetation (eg clearing) should be avoided where possible. Where impacts cannot be avoided, the EIA should detail how a "maintain or improve" outcome for biodiversity will be achieved. Biobanking provides a voluntary mechanism through which this can be achieved. The Biobanking assessment methodology allows quantification of impacts and assessment of the value of offset areas and associated management regimes for those areas. Information about Biobanking is located on OEH's website at <http://www.environment.nsw.gov.au/biobanking/index.htm>

### **Report Requirements**

The EIA documentation should include a report on the flora that includes the following:

- detailed location map and identification of the area surveyed (including the location of photographs, transects, areas of significance etc),
- at least one of the following: a land satellite image, vegetation communities map, aerial photograph, or a remnant vegetation map,
- A map identifying the vegetation communities located in the study area and the areas of each vegetation community to be impacted.
- a complete plant list (including scientific names of those plants) of all tree, shrub, ground cover and aquatic species, categorised according to country of origin (ie., native versus exotic),

- a detailed description of vegetation structure (in terms of a scientifically accepted classification system) and spatial distribution (i.e. plant densities and patterning) on the site, including a vegetation map,
- describe the condition and integrity of the vegetation including a description of any past disturbance,
- an account of the likely original vegetation communities (pre-, or at early settlement), and an assessment of the likely regional distribution of the original communities,
- an assessment of whether the plant communities are adequately represented in conservation reserves or otherwise protected,
- an account of the hydrology of the area and how this relates to the dynamics of the vegetation communities,
- a list of **known** and **likely** threatened species as listed under Schedules 1 & 2 (*Threatened Species Conservation Act 1995*) which might occur at the site. The OEH database needs to be accessed and the likelihood of occurrence of threatened flora species determined,
- an assessment of the impacts of the proposal on flora, on-site and off-site (eg siltation, water availability or drainage changes) and measures to mitigate these impacts,
- an assessment of the significance of the impact of the development at both the site and at the regional scale,
- a detailed rehabilitation/management plan including a list of the plant species to be used during rehabilitation (if required),
- detail methodologies used and a list of the reference literature cited, and
- any other issues that may be considered relevant.

The above guidelines will provide some of the information necessary to conduct an Assessment of Significance required for threatened flora and fauna under Section 5a of the *EP&A Act*, should threatened species be likely or known to occur in the locality of the subject development proposal. Similarly, it will provide some of the information required if an application is found to be necessary under the *Native Vegetation Conservation Act (1997)*. However the above relates mostly to the specific environmental assessment processes under the *EP&A Act* and does not constitute an Assessment of Significance.

Similarly, the above guidelines will provide some of the information required for Biobanking, but may not be sufficient for Biobanking offset calculations. Please refer to the Biobanking website or contact OEH for specific information relating to Biobanking assessment requirements.

## FAUNA

### Background

Evidence suggests that Western NSW has suffered the highest extinction rate for indigenous mammals of any region in the world. Many other vertebrate species are currently threatened. One of the major reasons for such a high level of extinction has been the destruction of habitat. Native vegetation including wetland, riparian and remnant environments are very significant areas of fauna habitat. Therefore any development in such areas should fully consider the impact on fauna and its habitat.



## Report Requirements

The EIA document should include a report on the fauna (including protected and threatened species), that includes the following:

- detailed location map and identification of the area surveyed (including the location of photographs, transects, areas of significance etc),
- at least one of the following: a land satellite image, vegetation communities map, aerial photograph, or a remnant vegetation map,
- a complete list of all **known** and **likely** terrestrial and aquatic species (eg birds, mammals, reptiles and amphibians including scientific names). It is suggested that invertebrates also be considered as they form part of the food chain for many fauna species,
- those species which are protected, threatened or listed under any international agreements, as well as introduced species,
- those species known or likely to breed in the area,
- any species which have specific habitat requirements found within the project area,
- those species or populations which may be near the limit of their geographic range or are a disjunct/isolated population,
- assessment of the importance or otherwise of the location as a corridor, migratory route or drought refuge, in relation to other remnant vegetation, riparian and wetland areas or habitat in the region,
- assessment of the impacts of the proposal on all fauna and its habitat, at both the site and at the regional scale,
- identification of any mitigation measures proposed to limit or ameliorate the impact of the proposal,
- detailed methodologies used and a list of the reference literature cited, and,
- any other issues that may be considered relevant.

Again, the above guidelines will provide some of the information required for the Threatened Species component of Biobanking, but may not be sufficient for Biobanking offset calculations. Please refer to the Biobanking website or contact OEH for specific information relating to Biobanking assessment requirements

## SEPP No. 44 - Koala Habitat Protection

The Shire may be listed in Schedule 1 of SEPP No. 44 - Koala Habitat Protection. If so, the requirements of the SEPP regarding Koala habitat protection should be considered by the proponents.

## THREATENED SPECIES OF FAUNA AND FLORA

### Background

Apart from the need to consider the impact on protected species, the proponent will need to address the requirements of legislation that currently governs threatened species protection and impact assessment in NSW.

The *Threatened Species Conservation Act (1995)* (*TSC Act*) protects all threatened flora and fauna native to NSW (excluding fish and marine plants). The proponent will need to consider the provisions of this Act.

The *TSC Act* contains lists of threatened species, which are divided into a number of categories – those presumed extinct, endangered species, critically endangered

species and vulnerable species. It also contains lists of endangered populations, endangered ecological communities, critically endangered ecological communities and vulnerable ecological communities. This Act also allows for the declaration of critical habitat, key threatening processes and the preparation of both Recovery Plans and Threat Abatement Plans. These listings and plans must be considered as part of the EIA process.

If an activity or development is proposed in a locality likely or known to be occupied by a threatened species, population, ecological community or critical habitat, any potential impact to that threatened species must be taken into account during the development assessment process. However under the *EP&A Act*, some types of development are not required to go through approval processes. Please note that a licence may still be required under the *TSC Act* if such a development/activity is likely to harm a threatened species, population or ecological community.

Proponents can voluntarily use BioBanking to minimise and offset their impacts on biodiversity. The scheme provides an alternative path for proponents to the current threatened species assessment of significance process.

### **Assessment of Significance & Species Impact Statements**

If during the flora or fauna assessment or survey, threatened species are **found** or are **likely** to occur in the area, the proponents must undertake an Assessment of Significance as outlined in section 5A of the *EP&A Act* to determine whether or not the development would be likely to have a significant impact upon threatened species.

The Assessment of Significance is a statutory mechanism which allows decision makers to assess whether a proposed development or activity is likely to have a significant effect on threatened species, populations or ecological communities, or their habitats.

The Assessment of Significance is contained within section 5A of the *EP&A Act* and consists of seven factors which need to be addressed for informed decisions to be made regarding the effect of a proposed development or activity on threatened species, populations or ecological communities, or their habitats. A copy of OEHS's *Threatened species assessment guidelines: The assessment of significance* can be obtained from the OEHS website at:

<http://www.environment.nsw.gov.au/threatspec/tsaguide.htm>

Following threatened species assessment via the Assessment of Significance, it may be necessary to prepare a Species Impact Statement (SIS). The proponent will need to prepare a SIS in the following circumstances:

- If (after having addressed Section 5A) the flora/fauna assessment concludes that there is likely to be a significant impact to threatened species, or
- The proposed development is likely to affect critical habitat declared under the *TSC Act*.

If a SIS is required, the proponent (not the consultant) must write to the Director-General of OEHS for any formal requirements for the SIS that he might deem appropriate. The SIS must then be prepared in accordance with these requirements and provided to the Director-General. In some instances the Minister for the Environment will also need to be consulted for approval. An information circular ('Species Impact Statements') is available from the OEHS for detailed information about this assessment.

Methods to reduce the impact on the protected and threatened species should be considered fully, and are considered an integral requirement within any SIS document.

The OEH advises that conducting an Assessment of Significance or an SIS according to the provisions of the *EP&A Act* and the *TSC Act* is a complex task and should be undertaken by suitably qualified person(s).

## **AVAILABLE DATA**

OEH can supply, at the standard cost, fauna prediction data and recorded fauna sightings data (Wildlife Atlas of NSW) to help in the investigation. The following information on site recordings of Flora and Fauna is available from OEH:

- A general search for flora and fauna records can be conducted through the Atlas of NSW Wildlife at:  
<http://wildlifeatlas.nationalparks.nsw.gov.au/wildlifeatlas/watlas.jsp>

Please note that not all the information associated with the individual records is available on this website. You can apply to the Office of Environment and Heritage for more detailed information about individual sightings (terms and conditions apply). Contact the Wildlife Data Unit for more information on (02) 9995 5000.

- Detailed information relating to threatened species, populations, ecological communities and their habitats can be obtained from the OEH Threatened Species website at:  
<http://www.threatenedspecies.environment.nsw.gov.au/index.aspx>

Other reference literature may be available for the subject locality/region. The proponent should explore this possibility thoroughly.

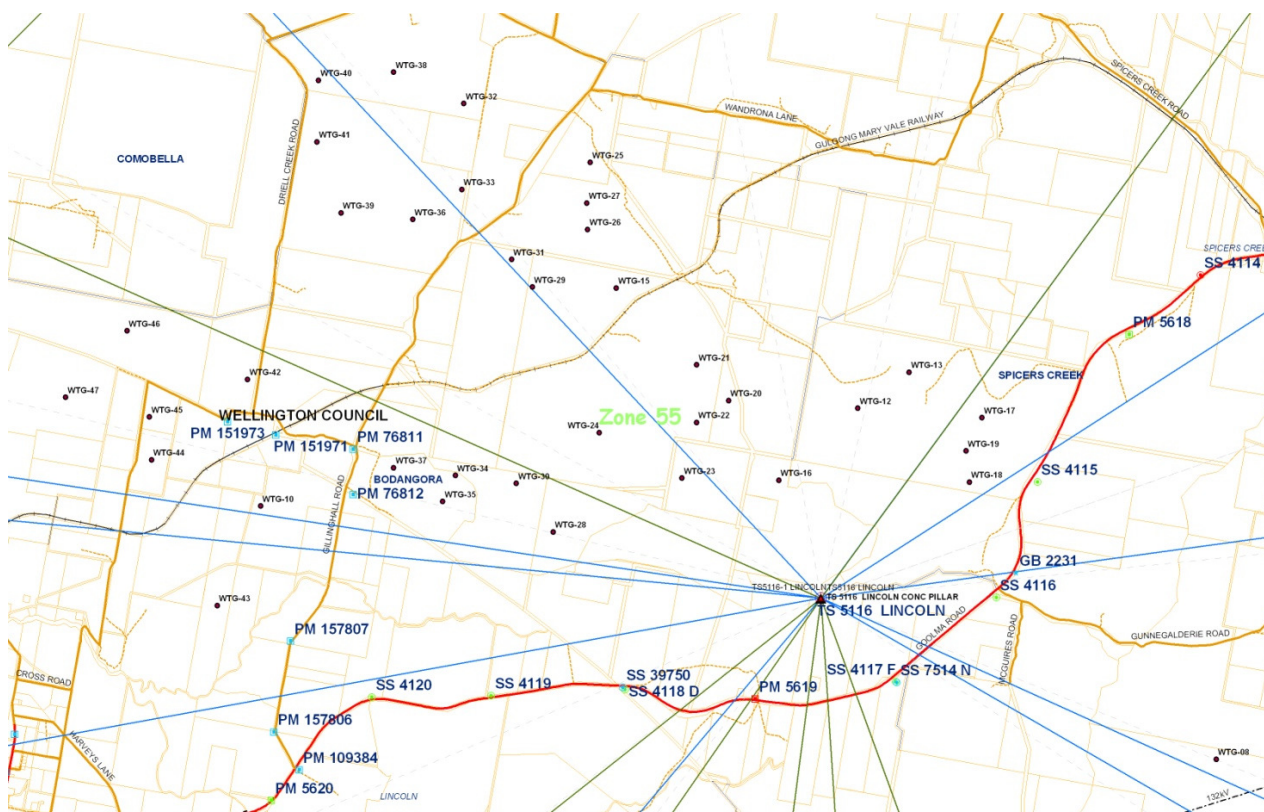
Ref: 11/10838 – 2011/004

Mr Frank Boland  
Development Manager  
infigen Energy  
Level 22, 56 Pitt Street  
Sydney NSW 2000

Dear Frank,

**Re:** Proposed Bodangora Wind Farm,  
Regarding Trig Station TS5116 “Lincoln” and other survey marks  
LGA: Wellington Council Locality: Bodangora  
Your Ref: Bodangora Wind Farm **Approval No 2011/004**

I refer to your correspondence regarding the proposed Bodangora Wind Farm and how it may affect survey marks in the area. Below is a diagram showing Permanent Survey Marks in the area, connections between Trig Stations and how they relate to your proposed turbines.



Accurate survey marks are located along Goolma Road and include Trig Station TS5116 "Lincoln". All other marks are approximate only. As the location of proposed turbines will be some distance from the Trig Station "Lincoln" (TS5116) and Goolma Road, the Surveyor General has no objection to this proposal.

All survey marks must be protected during construction to ensure the marks are not disturbed, damaged or destroyed. If there is a possibility survey marks may be affected, then protective measures must be undertaken.

Please quote the approval number **11/10838 - 2011/004** in any correspondence.

Yours sincerely,

A handwritten signature in black ink, appearing to read 'Les Gardner', with a stylized, cursive script.

**Les Gardner**

**Senior Surveyor**  
For Surveyor General of NSW

7 September 2011



7 September 2011

Mr Frank Boland  
Infigen Energy Development Pty Ltd  
Level 22  
56 Pitt St  
Sydney NSW 2000

## Re: Forsayth Wind Farm and EPM 18093

Dear Frank,

After reviewing your plans and discussing the project with you, it appears that your project is restricted to the higher areas of the Newcastle Range, east of Forsayth. The exploration permit (EPM 18093) that Copper Strike holds over that large area is highly prospective. However, the higher areas on the Newcastle Range, which is the area that you have targeted, have a lower likelihood of becoming viable for extraction.

Copper Strike is supportive of the proposed wind farm and does not believe that it will impact the exploration activity currently being undertaken. If there are any problems in the future, I am sure that we can come to a solution that is agreeable to both sides.

Yours sincerely

A handwritten signature in dark ink, appearing to read "Tom Eadie".

**TOM EADIE**  
**Managing Director**

Registered Office

Copper Strike Limited ABN 16 108 398 983  
Level 9 - 356 Collins Street Melbourne Victoria 3000 Australia  
Ph 03 96400955 Fax 03 96420698 email [tom.eadie@copperstrike.com.au](mailto:tom.eadie@copperstrike.com.au)  
[www.copperstrike.com.au](http://www.copperstrike.com.au)





**Australian Government**  
**Civil Aviation Safety Authority**

AIRSPACE AND AERODROME REGULATION

File Ref: EF11/7080

2 September 2011

Mr Frank Boland  
Development Manager  
Infigen Energy Development Pty Ltd  
Level 22, 56 Pitt Street  
SYDNEY NSW 2000

Dear Sir

**Bodangora Wind Farm Proposal – Invitation to comment**

Thank you for your letter dated 23 August 2011.

For your proposed wind farm at Bodangora, you should undertake the following consultation to assess the potential hazard posed to aviation by your proposed development.

- Consult with Wellington Shire Council to determine any impact on the operation of Wellington (Bodangora) aerodrome.
- Identify any other aerodromes within 30 km of the boundaries of the proposed wind farm and consult with the aerodrome operator to determine any impact on the operations at such aerodromes.
- Consult with Airservices Australia to have them assess any potential impact on instrument approach procedures at aerodromes, navigational aids, communications facilities or surveillance facilities. This should include any risks associated with electric and magnetic fields.
- Contact the Aerial Agriculture Association of Australia (02 6241 2100 – Mr Phil Hurst) to advise him of the proposal and gain comment on the potential hazards to aerial application and related operations in the area. Aerial agriculture frequently has concerns about wind monitoring masts, and you should specifically include them in your discussion.

At this time, CASA has no specific authority to require marking or lighting of obstacles that are not at (or in the vicinity of) an aerodrome.



**Central West Catchment Management Authority**  
30 Warne St, PO Box 227 WELLINGTON NSW 2820  
T (02) 6840 7800 F (02) 6840 7801  
[www.cw.cma.nsw.gov.au](http://www.cw.cma.nsw.gov.au)

**Contact: Clayton Miller**  
T (02) 6339 4905 M 0409 656 585  
email: [clayton.miller@cma.nsw.gov.au](mailto:clayton.miller@cma.nsw.gov.au)

File: CW00082

Frank Boland  
Infigen Energy Development Pty Ltd  
Level 22, 56 Pitt Street  
Sydney NSW 2000

13<sup>th</sup> September 2011

Dear Mr Boland

**Subject: Bodangora Wind Farm Proposal**

I refer to your letter seeking comment from the Central West Catchment Management Authority (CMA) with regards to potential environmental impacts stemming from the above proposal.

As previously stated the proposed project is declared a part 3A project under the EP&A Act 1979, thus the Native Vegetation Act 2003 is excluded. With this in mind, the Central West CMA has no legislative requirements to be covered under this Act, but would recommend limited/ minimum disturbance to any native vegetation.

Cultural Heritage is another important aspect and is included in our Catchment Action Plan. From the Central West CMA's prospective it is vital that a Cultural Heritage survey is undertaken across the project footprint to identify any areas of significance. The Central West CMA's Aboriginal Reference Group has been registered as an interested party in the proposed development, and would provide a logical starting point for local contacts who could undertake an assessment.

The impact upon the local rural community is also of high significance to the Central West CMA. Issues such as noise, aesthetics and possible health and bushfire risks should be toughly investigated with community consultation paramount to the process. It is recommended that a comprehensive consultation process is followed through with all the groups and individuals registered in this process and not just the one identified peak body.

Yours sincerely,

Tim Ferraro  
General Manager  
Central West CMA



**Central West**  
**Catchment Management Authority**