

# METCASH EXTENSION | LANDSCAPE

LANDSCAPE BUFFER ANALYSIS

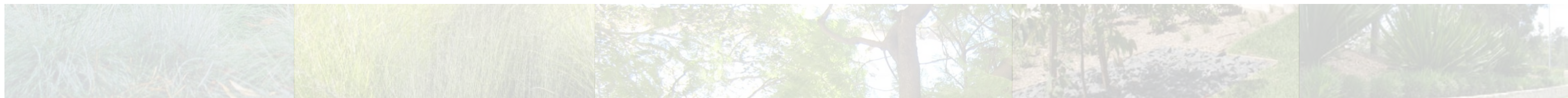
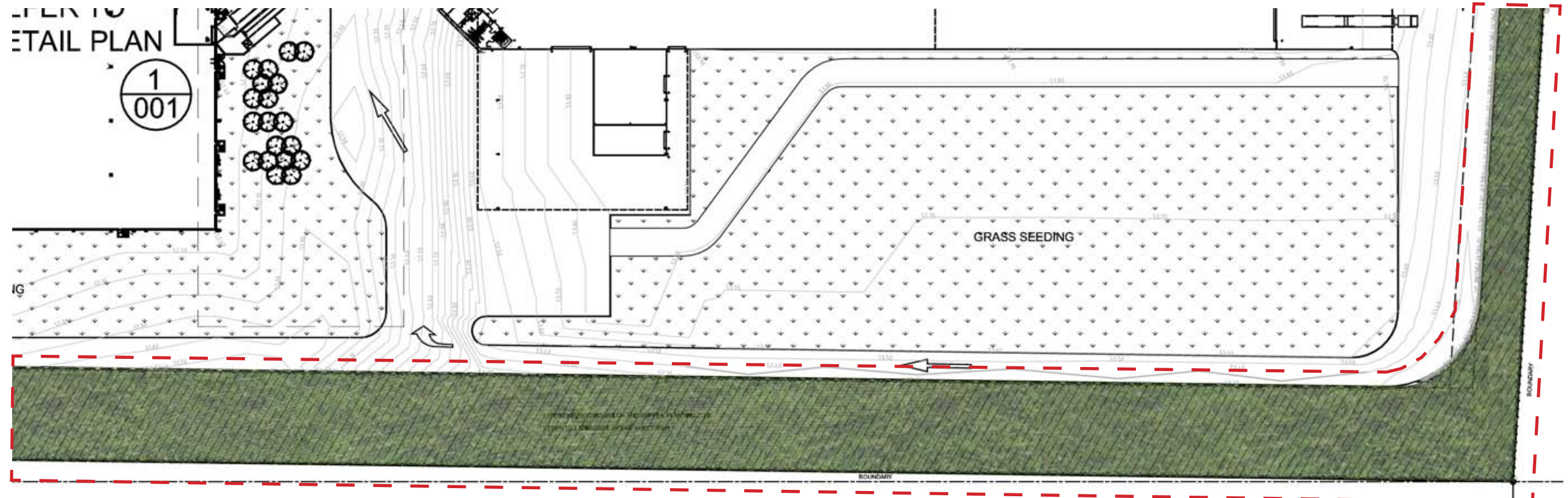


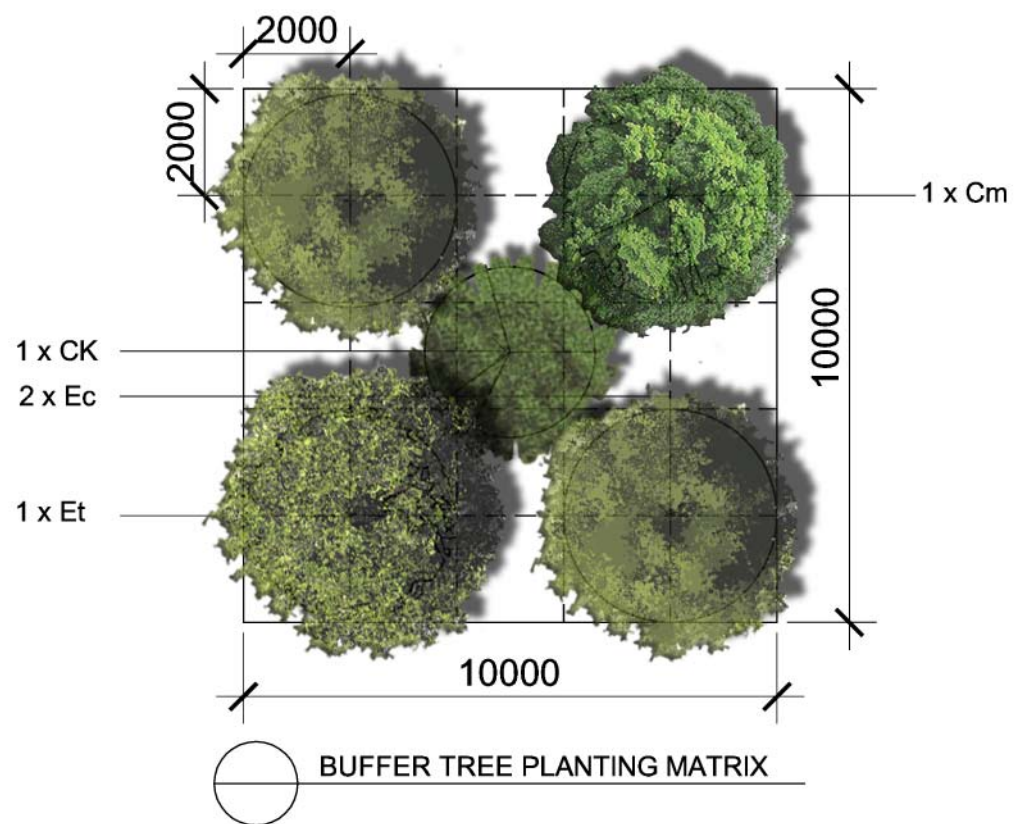


Photo Montage - South Elevation to M4 Motorway





Buffer Planting Area Installed as per Previous Approval



Corymbia maculata



Eucalyptus crebra

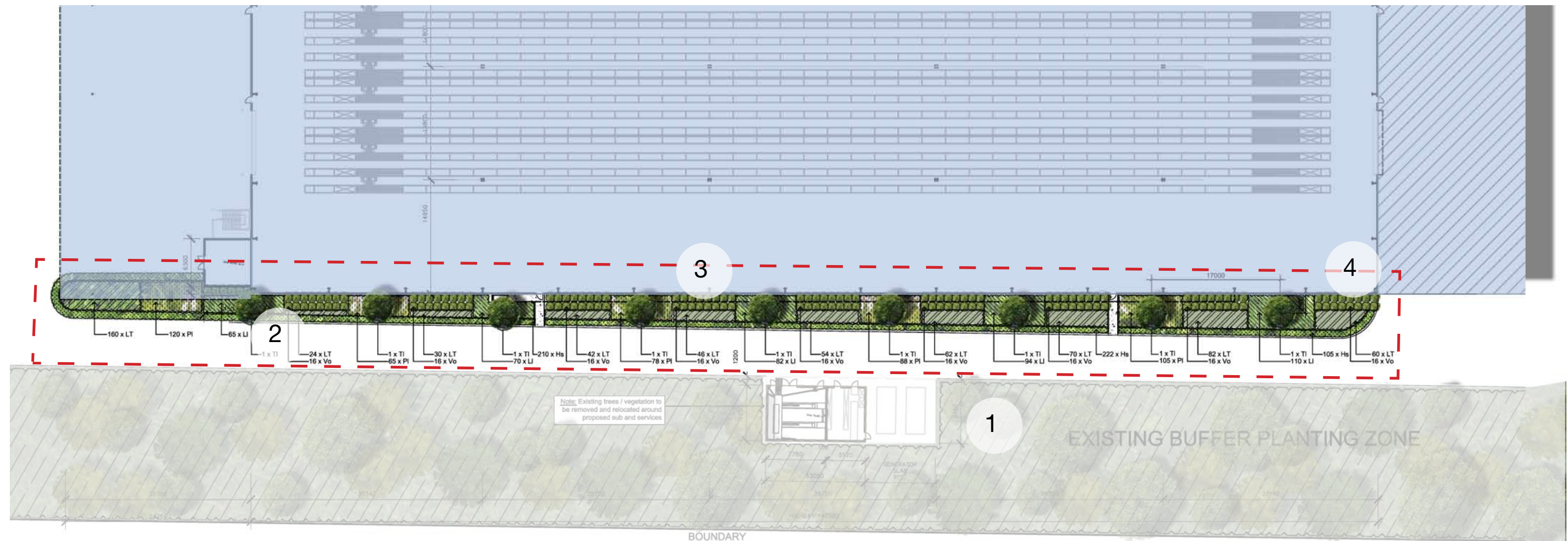


Eucalyptus tereticornis



Callistemon 'Kings Park Special'





1  
Existing buffer planting zone to the embankment slope to be retained. Tree protection and re-location is recommended to accommodate new substation/services within the batter.



2  
The new landscape works will include removal of existing grasslands/vegetation and replacement with an avenue of native tree species to screen the southern building facade



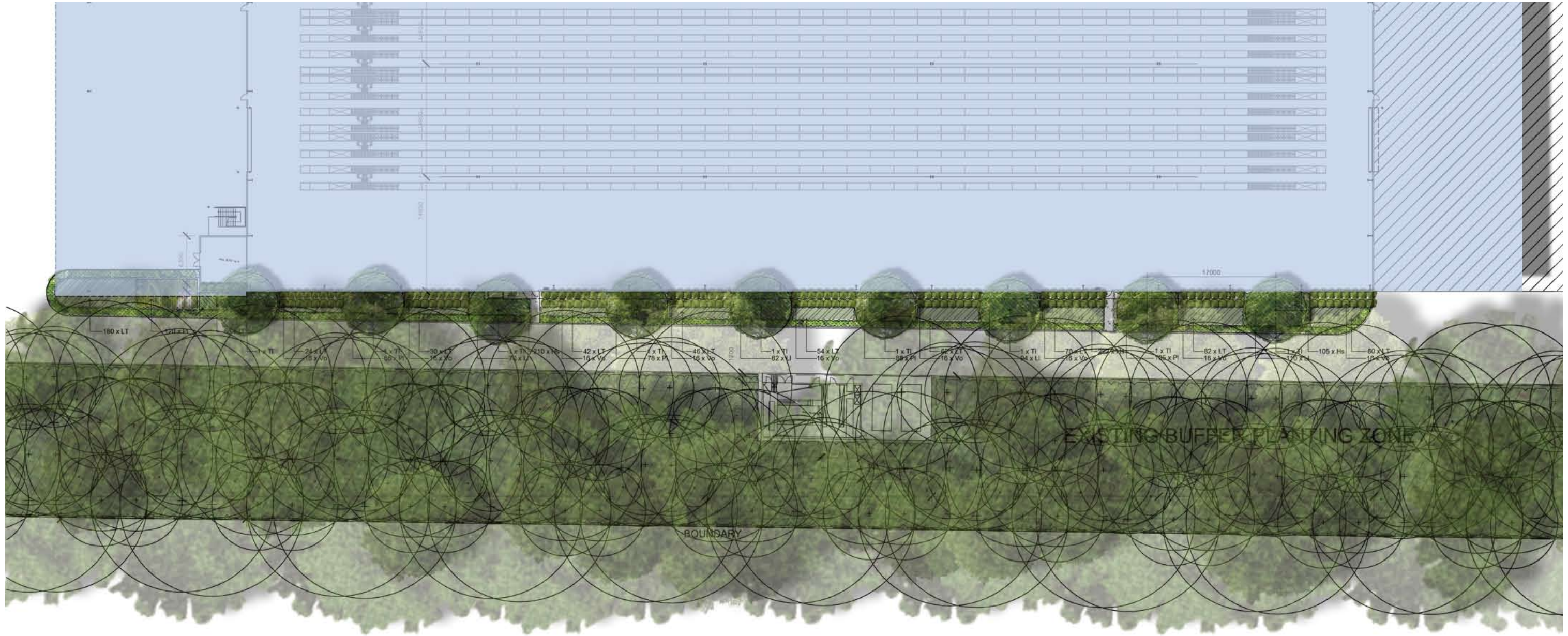
3  
A combination of hedge planting and low water use native grasses / groundcovers to ensure low maintenance



4  
Species selection will remain consistent with the existing planting palette for the estate

PLANT SCHEDULE						
METCASH - Distribution Centre Extension						
Symbol	Botanical Name	Common Name	Mature Height (m.)	Mature Spread (m.)	Spacings	Pot Size
<b>Trees</b>						
TI	<i>Tristaniopsis laurina</i> 'Luscious'	Water Gum	9	8	As Shown	75L
<b>Shrubs</b>						
Vo	<i>Viburnum odoratissimum</i>	Sweet Viburnum	5	3.5	As Shown	300mm
<b>Groundcovers / Grasses</b>						
Hs	<i>Hibbertia scandens</i>	Snake Vine	0.2	2	5.00/m2	150mm
LI	<i>Lomandra longifolia</i>	Mat Rush	1	0.6	5.00/m2	150mm
LT	<i>Lomandra longifolia</i> 'Tanika'	Matt Rush Grass	0.7	0.6	5.00/m2	150mm
PI	<i>Poa labillardieri</i>	Tussock Grass	0.8	0.5	5.00/m2	150mm

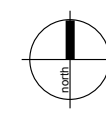




**SITE IMAGE**  
Landscape Architects  
Sydney | Melbourne | Ho Chi Minh City

## MATURE CANOPY | GROWTH PLAN

### METCASH EXTENSION | BUNGARRIBEE INDUSTRIAL ESTATE



Client  
Architect  
Site Image Job Number

Goodman  
Giles Tribe Architects  
SS12-2226

Issue  
Date  
13.12.2012





**SITE IMAGE**  
Landscape Architects  
Sydney | Melbourne | Ho Chi Minh City

## MATURE CANOPY | GROWTH MONTAGE METCASH EXTENSION | BUNGARRIBEE INDUSTRIAL ESTATE

Client  
Architect  
Site Image Job Number

Goodman  
Giles Tribe Architects  
SS12-2226

Issue  
Date  
13.12.2012

A