

'A' - RESTRICTION ON USE OF LAND (VIDE D.P.1044128)

ORIGIN OF LEVELS: S.S.M.51804 R.L. 65.572 (A.H.D.)  
ORIGIN OF COORDINATES: S.S.M.50498 E.337465.705, N.6245660.910  
S.S.M.51804 E.337291.832, N.6245643.193  
ORIGIN OF AZIMUTH: S.S.M.50498 - S.S.M.51804  
264°10' - 174.788 (M.G.A. GROUND)  
VIDE S.C.I.M.S.  
DATED 12.05.10

Notes:-

Location of structures approximate only.  
The levels and details on this plan have been determined by stadia methods and are within the general accepted accuracies for such surveys. All set out levels must be referred to the bench mark.  
Bearings and Distances are by deed only and are subject to Final Survey. Except where shown by dimension, the relationship of improvements to boundaries is diagrammatic only. The true positions are subject to Final Survey.  
Tree sizes are estimates and indicative only.  
Services and utilities shown have been located by physical evidence and/or by reference to service plans from the relevant authorities. Pits may not have been opened to verify the type of utility. Excavation has not been carried out to confirm underground location. Service details should be confirmed with the relevant service authority during design and prior to commencement of construction.  
As part of your duty of care, please contact the following where necessary :-

AGL Gas Company Ph: 131245  
Dial Before You Dig Ph: 1100  
Energy Australia Ph: 131535  
Integral Energy Ph: 131081  
Optus Communications Ph: 1800 505 777  
Sydney Water Ph: 132092  
Telstra Corporation Ph: 132203

This plan has been prepared for the exclusive use of the principal as listed in the title block.

Any construction on or near the boundaries will require further survey so that marks defining boundaries can be placed.

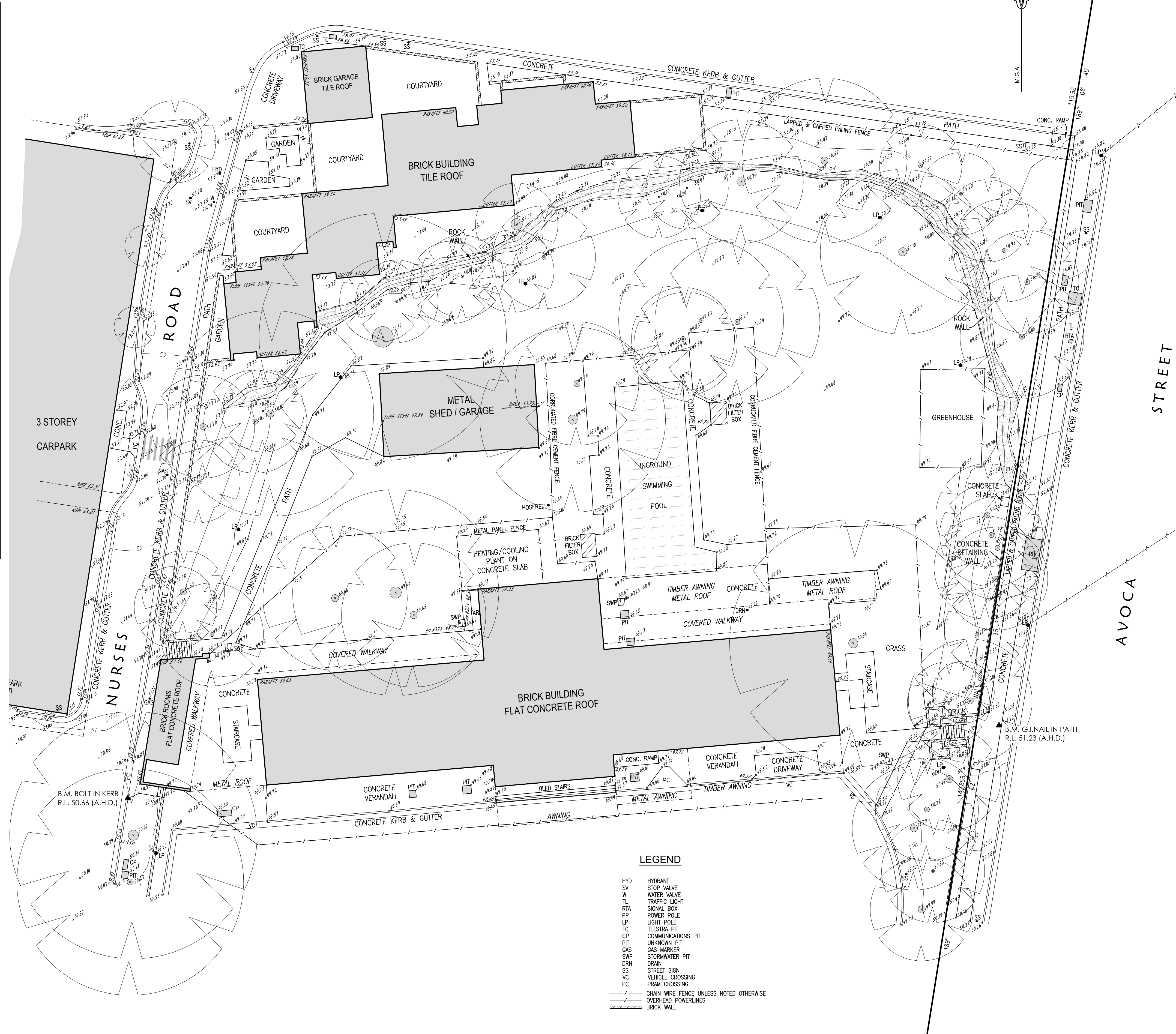
All set out levels must be referred to the bench mark.

© Copyright Craig & Rhodes Pty. Ltd. 2010.

No part of this survey may be reproduced, stored in a retrieval system or transmitted in any form without the express permission of the copyright owner except as permitted under the Copyright Act 1968.

Any permitted downloading, electronic storage, display, print, copy or reproduction of this survey should contain no alteration or addition to the original.

These notes must not be erased.



AMENDMENTS		
No.	Date	Description

Project: DETAIL SURVEY OVER PART LOT 1, D.P.870720  
SYDNEY CHILDRENS HOSPITAL,  
AVOCA STREET, RANDWICK.

Principal: HEALTH INFRASTRUCTURE			
Scale	1:200	Date	12.07.10
Datum	A.H.D.	L.G.A.	RANDWICK
Surveyed	T.G.	Drawn	B.R.M.
Checked	D.S.		

**CRAIG & RHODES**  
SURVEYORS PLANNERS CIVIL & STRUCTURAL ENGINEERS  
INCORPORATING JOHN G. NELSON & ASSOCIATES AND COMPLETE CONSULTANTS

ABN 77 050 209 991 Level 4, Suite 400 16-18 Cambridge St EPPING NSW 2121 PO Box 233 EPPING NSW 1710	ACN 050 209 991 DX 4408 EPPING Tel. 9869-1855 Fax. 9869-2341 reception@crandrhodes.com.au www.craigandrhodes.com.au © Craig & Rhodes	ISO 9001 Approved Company	Directory Z:\096-10	Dwg. File 09610T2
Sheet No. 1 of 1	Our Ref. 096-10			