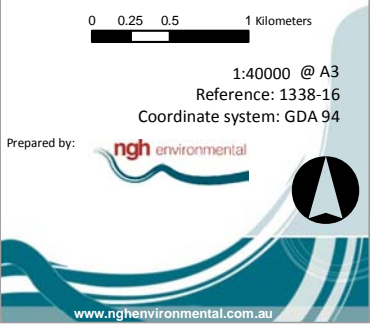


Appendix H Additional maps

TOPOGRAPHIC CONTEXT: MANILDRA SOLAR FARM SITE

Prepared for:
infigen



INFRASTRUCTURE LAYOUT: MANILDRA SOLAR FARM SITE

Prepared for: **infigen**

Site boundary

Development envelope

Existing substation

Public road access

Existing track

Proposed roads

Modules and inverters

Laydown areas

Temporary laydown areas

Site office

Notes:

1.0 Infrastructure layers extracted from CAD files prepared by Tenix

2.0 Additional layers prepared by nghenvironmental

3.0 Aerial image supplied by infigen

0 50 100 200 Meters

1:8000 @ A3

Reference: 1338-12

Coordinate system: GDA 94

Prepared by: **ngh environmental**

www.nghenvironmental.com.au

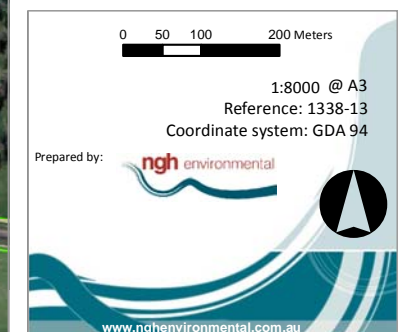
INFRASTRUCTURE LAYOUT: MANILDRA SOLAR FARM SITE

Prepared for: **infigen**



- Site boundary
- Development envelope
- Existing substation
- ★ Public road access
- Boundary fence
- Lot boundaries
- Cable trench 1
- Cable trench 2
- Transformers
- Site office

Notes:
 1.0 Infrastructure layers extracted from CAD files prepared by Tenix
 2.0 Additional layers prepared by nghenvironmental
 3.0 Aerial image supplied by infigen



INFRASTRUCTURE LAYOUT: MANILDRA SOLAR FARM SITE

Prepared for: **infigen**



- Site boundary
- Development envelope
- Existing substation
- Public road access
- Existing track
- Proposed roads
- Modules and inverters
- Laydown areas
- Temporary laydown areas
- Site office

Notes:
1.0 Infrastructure layers extracted from CAD files prepared by Tenix
2.0 Additional layers prepared by nghenvironmental

0 50 100 200 Meters

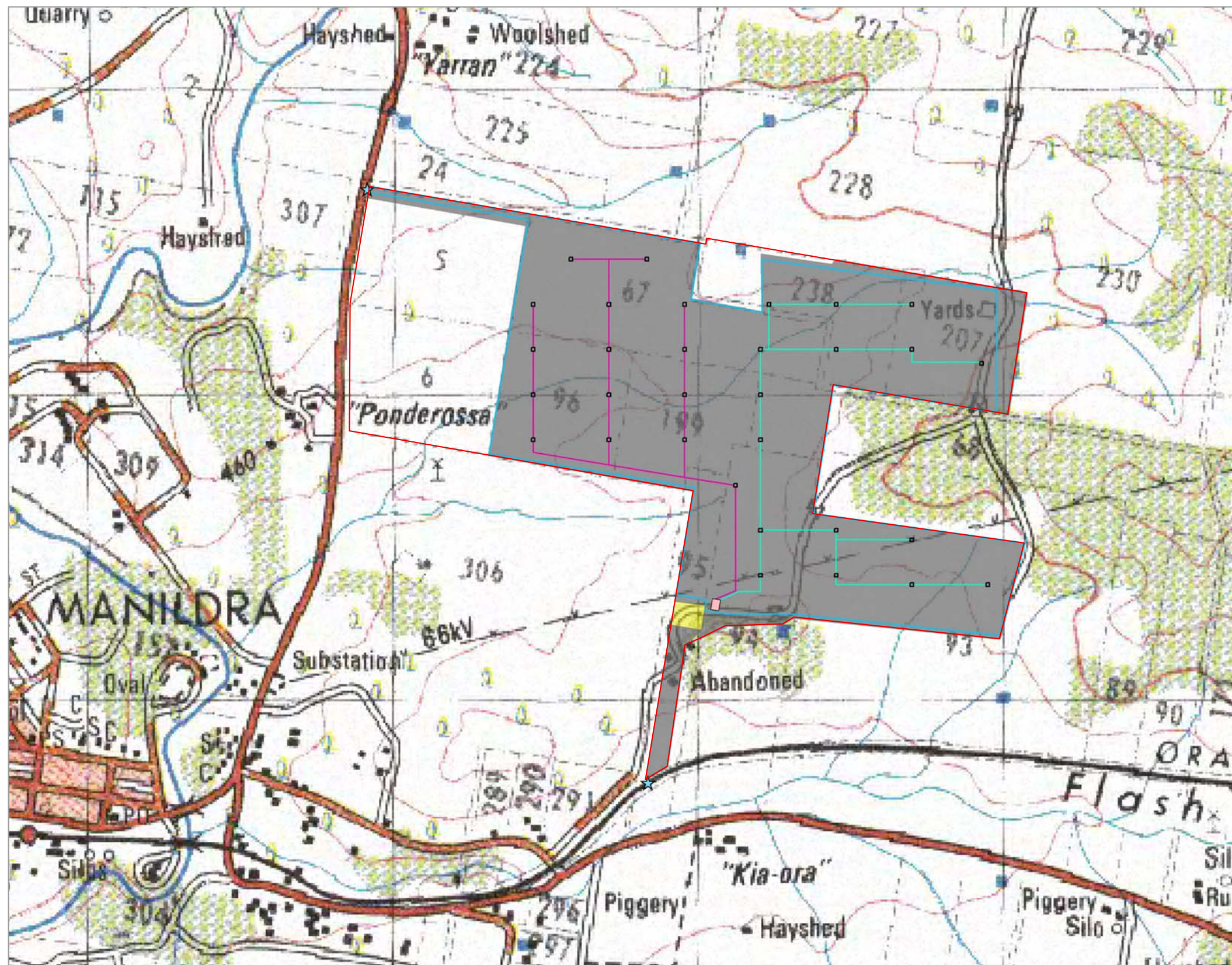
1:12000 @ A3
Reference: 1338-14
Coordinate system: GDA 94

Prepared by: **ngh environmental**

www.nghenvironmental.com.au

INFRASTRUCTURE LAYOUT: MANILDRA SOLAR FARM SITE

Prepared for:
infigen



- Site boundary
- Development envelope
- Existing substation
- ★ Public road access
- Boundary fence
- Cable trench 1
- Cable trench 2
- Transformers
- Site office

Notes:
1.0 Infrastructure layers extracted from CAD files prepared by Tenix
2.0 Additional layers prepared by nghenvironmental

