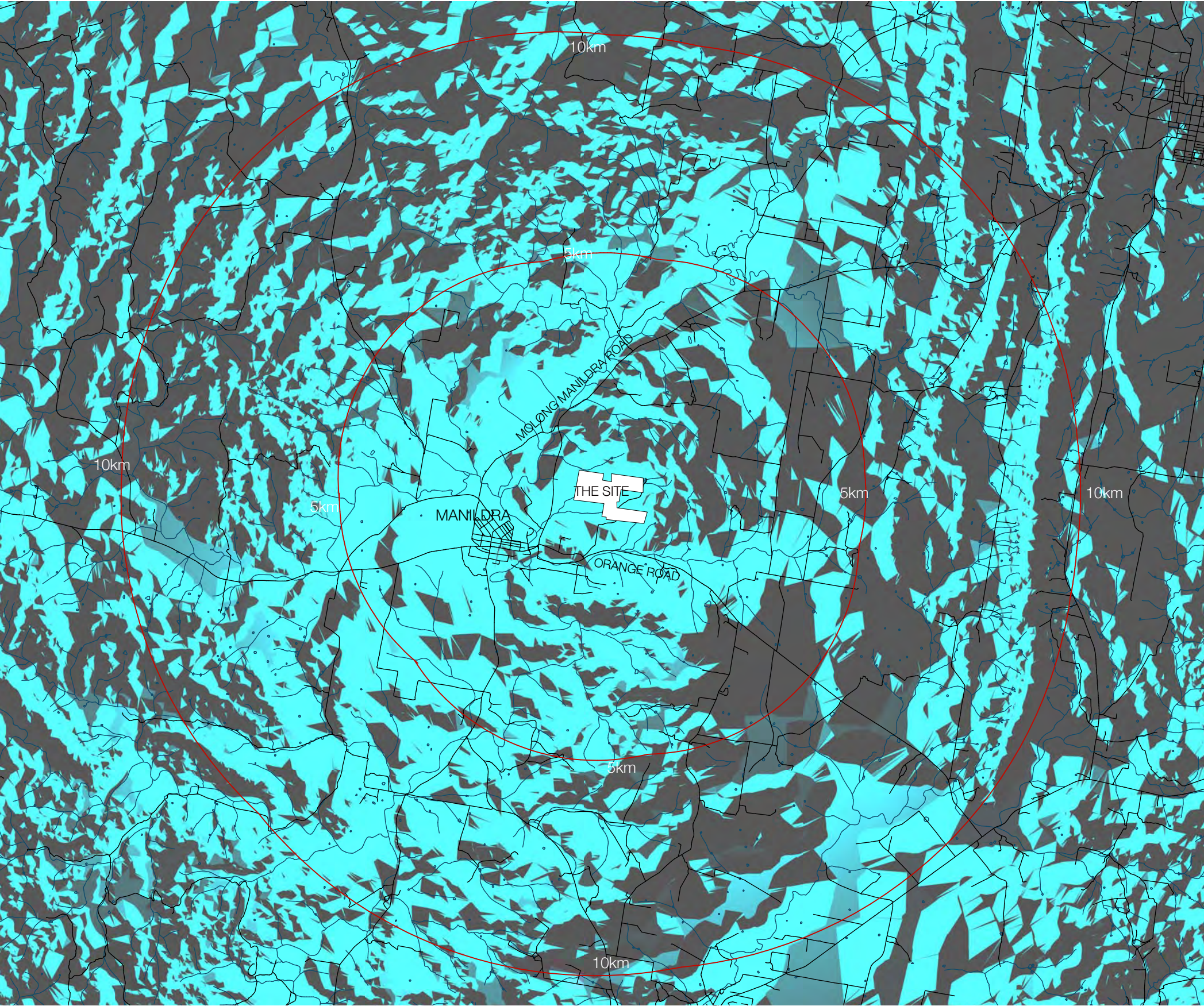


# 5.0 Visual Impact (contd.)



LEGEND

Existing roads

Creeklines

5km/10km from solar farm

Extent of Solar Farm

Area where proposed solar farm would be completely or partially visible.

Area where proposed solar farm will not be visible due to topography.

Note: Viewshed analysis is based on topographic mapping alone and is worst case scenario. Views are based on the height of the solar farm of 2-3m and does not allow for existing screening by vegetation or buildings.

0

2.5

5.0km

N

Moir Landscape Architecture

5 Woodstock Street PO Box 505 Mayfield, NSW 2304  
Phone (02)4967 1000 Fax (02)4967 1500  
admin@moirlandscapearchitecture.com.au  
www.moirlandscapearchitecture.com.au

Figure 7: Zone of Visual Influence (based on topography).



# 5.0 Visual Impact (contd.)

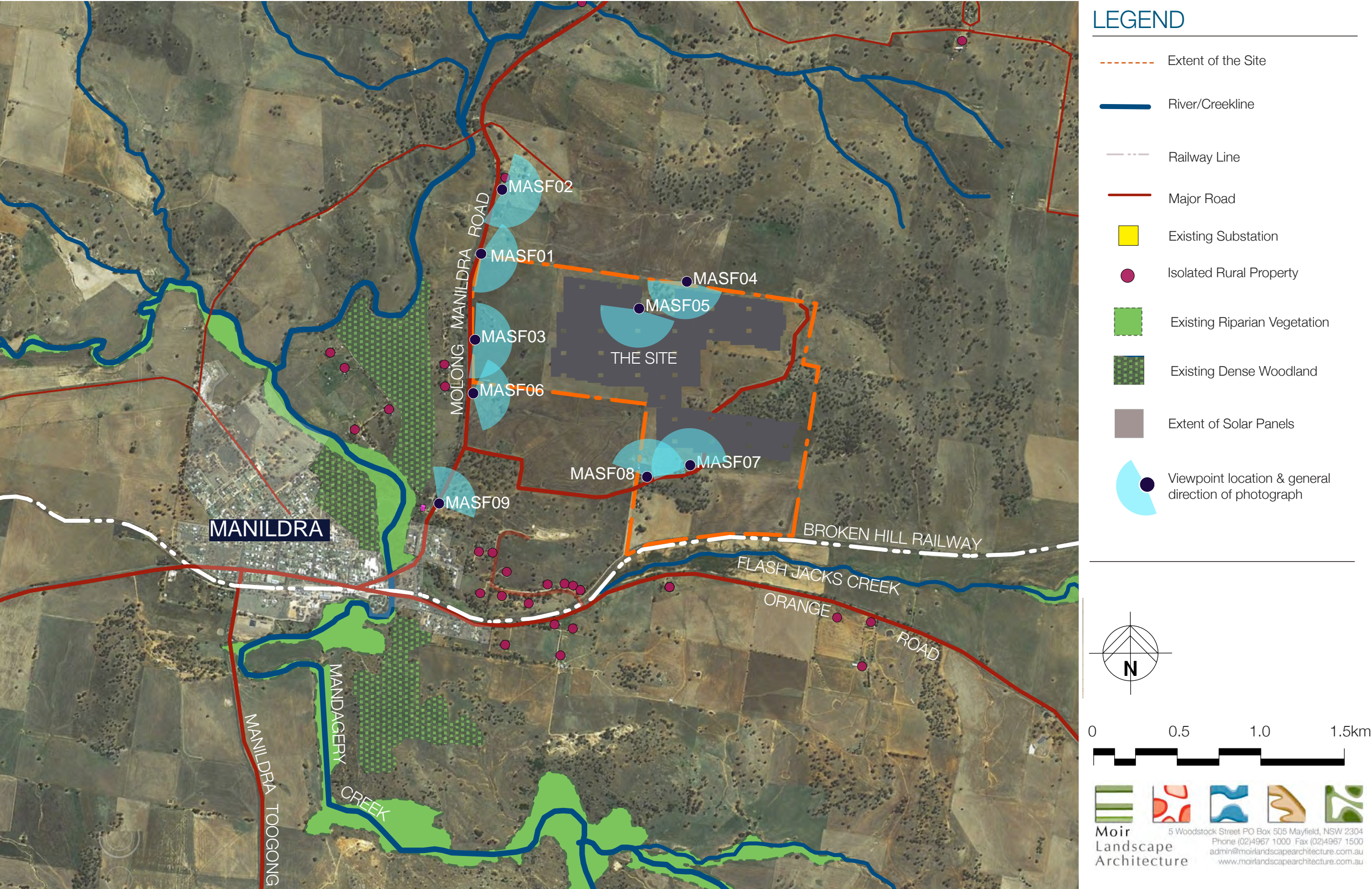


Figure 8: Assessment Viewpoints.





Plate 1: Photographic Panorama MASF01- View along access road off Molong Manildra Road.



Photograph cropped from Plate 1: View towards the Site from Molong Manildra Road.

| VIEWPOINT: MASF01 |                                   | DESCRIPTION:   | COMMENTS:   |
|-------------------|-----------------------------------|--|---|
| Location          | North West corner of site         | <p>Photograph taken from the entry to an access road which runs east off Molong Manildra Road, and defines the northern boundary of the Study Site. The landscape is open and undulating rural land utilised for grazing sheep. Eucalyptus plantings spot the landscape which is typically open pastoral land. Vegetation in the distance is associated with a ridgeline, typical of the area.</p> | <p>From this viewpoint the proposed Solar Farm will be visible. The undulating topography obstructs the majority of the solar farm from this viewpoint. The northern perimeter of the proposed development runs along the access road and will be visible from this point. The grouping of trees creates a backgroup for the solar panels which in turn reduces the visual impact. The visual sensitivity of this viewpoint is assessed as moderate and the visual effect is assessed as low resulting in the overall visual impact evaluation being low.</p> <p>Refer to Photomontage 1.</p> |
| Cooridnates       | S 33    10.046    E 148    42.325 |  |   |
| Elevation         | 459m                              |  |   |
| Viewing Distance  | 0.57km                            |  |   |
| LCU               | Molong Manildra Road              |  |   |





Plate 2: Photographic Panorama MASF02- View towards the Site from Yarran Farmhouse, Molong Manildra Road.



Photograph cropped from Plate 2: View towards the Site from Yarran Farmhouse.

| VIEWPOINT: MASF02 |  | DESCRIPTION:  | COMMENTS:  |
|-------------------|--|---|--|
| Location          | Yarran Farmhouse, Molong Manildra Road | View from Yarran Farmhouse located along Molong Manildra Road, approximately 450m south of Windeyer Street and just under 800m north of the Study Site. The photograph is taken in a generally southeasterly direction towards the location of the Study Site. The landscape is typified by undulating cleared pastoral land, with groups of native trees associated with the Farmhouse and Molong Manildra Road. | From this viewpoint the proposed solar farm will not be visible. The rise in topography in the middle ground of the photograph obstructs views to the south east towards the site. |
| Coordinates       | S 33 09.802 E 148 42.410               |   |  |
| Elevation         | 465m                                   |   | This viewpoint has been included to illustrate the existing landscape character of the study area, and how the undulating topography forms a visual barrier.                       |
| Viewing Distance  | 0.78km                                 |   |  |
| LCU               | Molong Manildra Road                   |   |  |





Plate 3: Photographic Panorama MASF03- View towards the Site from Molong Manildra Road.



Photograph cropped from Plate 3: View towards the Site from Molong Manildra Road.

| VIEWPOINT: MASF03 |                                 | DESCRIPTION:   | COMMENTS:   |
|-------------------|---------------------------------|--|---|
| Location          | Molong Manildra Road- Ridgelite | View from Molong Manildra Road on the western boundary of the Study Site. The photograph is taken in a generally eastern direction towards the Study Site. Molong-Manildra Road connects the town of Molong to Manildra from the north. The landscape is undulating with open grazing pasture. Some native trees are scattered along the ridge lines and along the roadside. | From this viewpoint the proposed development will be visible. This is due to the high elevation of the viewpoint in conjunction with the lack of vegetation and close proximity of the Site. The visual sensitivity of this viewpoint has been assessed as moderate and the visual effect has been assessed as moderate resulting in an overall visual impact assessment of moderate.<br><br>Refer to Photomontage 2. |
| Coordinates       | S 33 10.332 E 148 42.285        |  |   |
| Elevation         | 469m                            |  |   |
| Viewing Distance  | 0.54km                          |  |   |
| LCU               | Molong Manildra Road            |  |   |





Plate 4: Photographic Panorama MASF04- View towards the Site from paddock north of the Site.



Photograph cropped from Plate 4: View over the Site from paddock immediately north of the Site.

| VIEWPOINT: MASF04 |                         | DESCRIPTION:  | COMMENTS:   |
|-------------------|-------------------------|---|---|
| Location          | Paddock                 | View from an unsealed access road which forms the northern boundary of the Study Site, approximately 1.35km east off Molong Manildra Road. The direction of the photograph is generally towards the south, looking across the Study Site towards the existing Manildra Substation visible in the middle ground of the photograph. Powerlines transverse the landscape, visible in the middle ground of the photograph. The landscape is typified by an undulating topography of open pasture, spotted with native trees. Dense native vegetation along the northern outskirts of Manildra is visible in the middle ground to the right of the photograph. Beyond this vegetation, the Mandagery Ridge is visible in the background. | From this viewpoint the proposed solar farm will be visible due to the high elevation of the viewpoint, close proximity to the Site and lack of vegetation. The viewpoint is on the northern edge of the Site and looking from this point the proposed development would be seen as a dominant landscape feature. The visual sensitivity of this viewpoint is assessed as low and the visual effect of the development is assessed as high resulting in an overall visual impact of high. |
| Coordinates       | S 33 10.147 E 48 43.179 |   |   |
| Elevation         | 494m                    |   |   |
| Viewing Distance  | 0km                     |   |   |
| LCU               | Pastoral Land           |   |   |



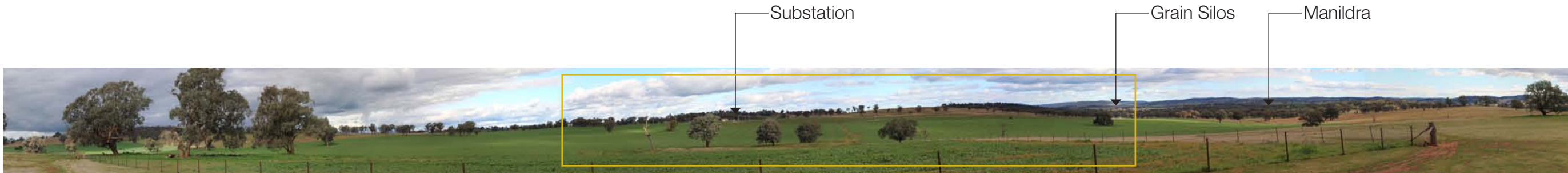


Plate 5: Photographic Panorama MASF05- View across the Site from paddock north of the Site.



Photograph cropped from Plate 5: View across the Site from northern boundary.

| VIEWPOINT: MASF05 |                          | DESCRIPTION:  | COMMENTS:   |
|-------------------|--------------------------|---|---|
| Location          | Paddock                  | View from a paddock within the Study Site, approximately 1.05km to the east of Molong Manildra Road. The photograph is taken in a generally south direction, across the Study Site towards Manildra. The Manildra Substation is visible in the centre of the middle ground of the photograph. The landscape is gently undulating pasture land typical of the area, with a sparse coverage of native trees. Dense riparian vegetation associated with the Mandagery Creek, north of Manildra, is visible in the background of the photograph. The Mandagery Ridge and associated vegetated is visible in the background. | The proposed solar farm will be visible from this viewpoint and would appear as a dominant feature of the landscape. The viewpoint is taken from a paddock and is assessed as having a low visual sensitivity. The solar farm is located directly south of the viewpoint, being assessed as having a high visual effect. The overall visual impact assessment for this viewpoint is moderate. |
| Coordinates       | S 33 10.222 E 148 42.981 |   |   |
| Elevation         | 482m                     |   |   |
| Viewing Distance  | 0.01km                   |   |   |
| LCU               | Pastoral Land            |   |   |