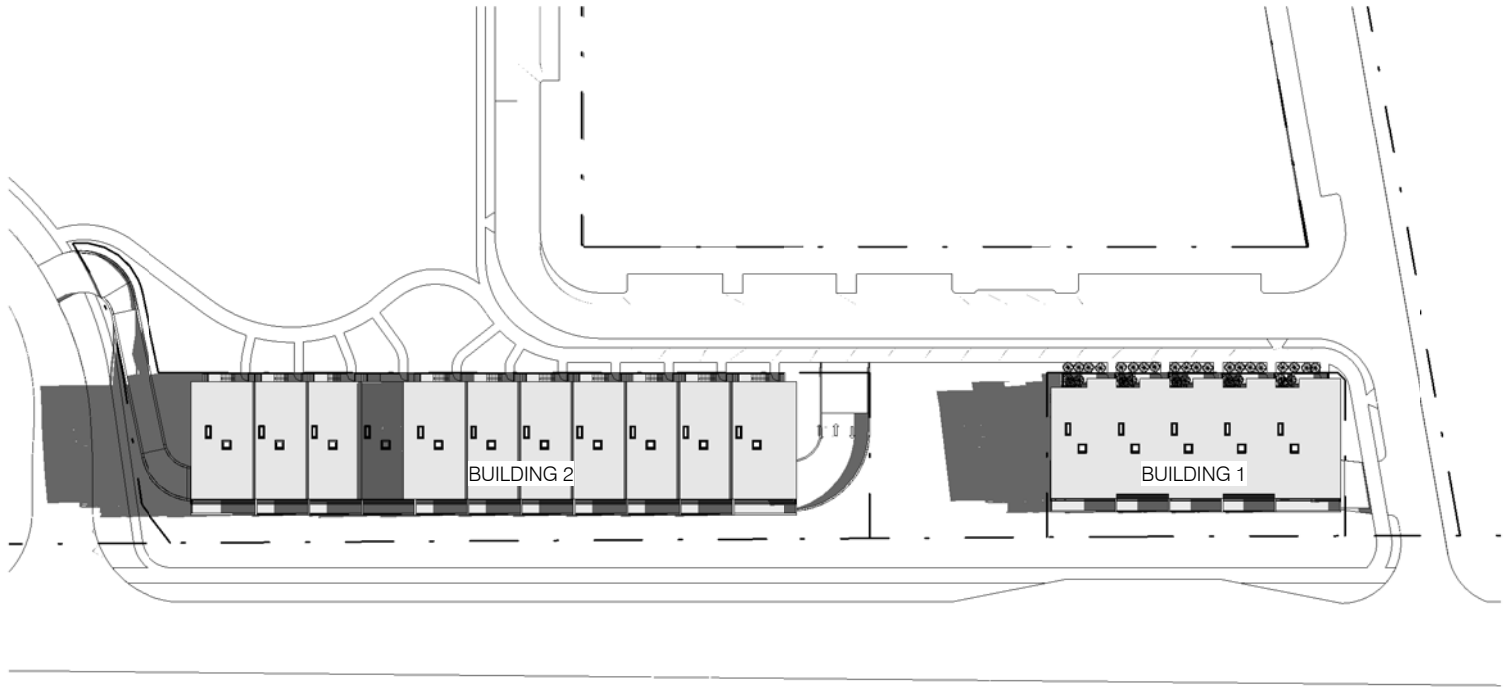
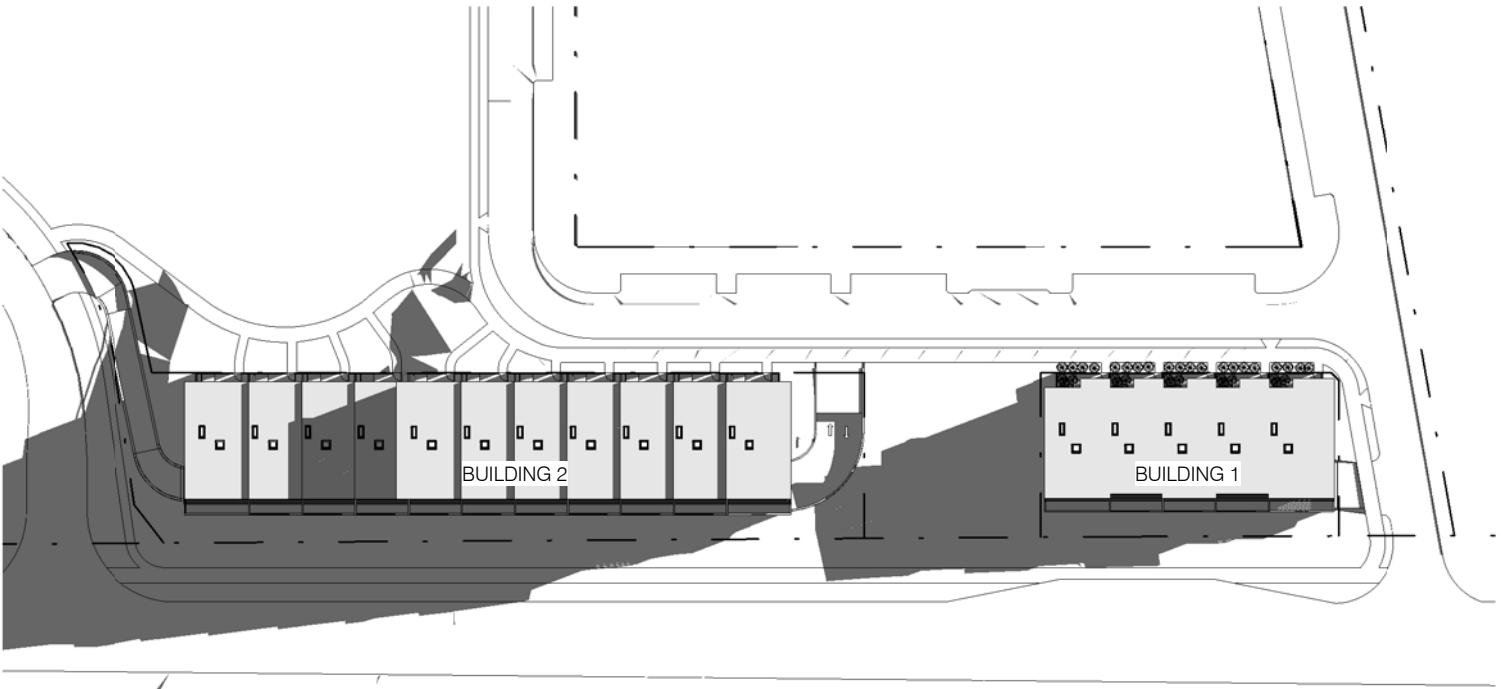


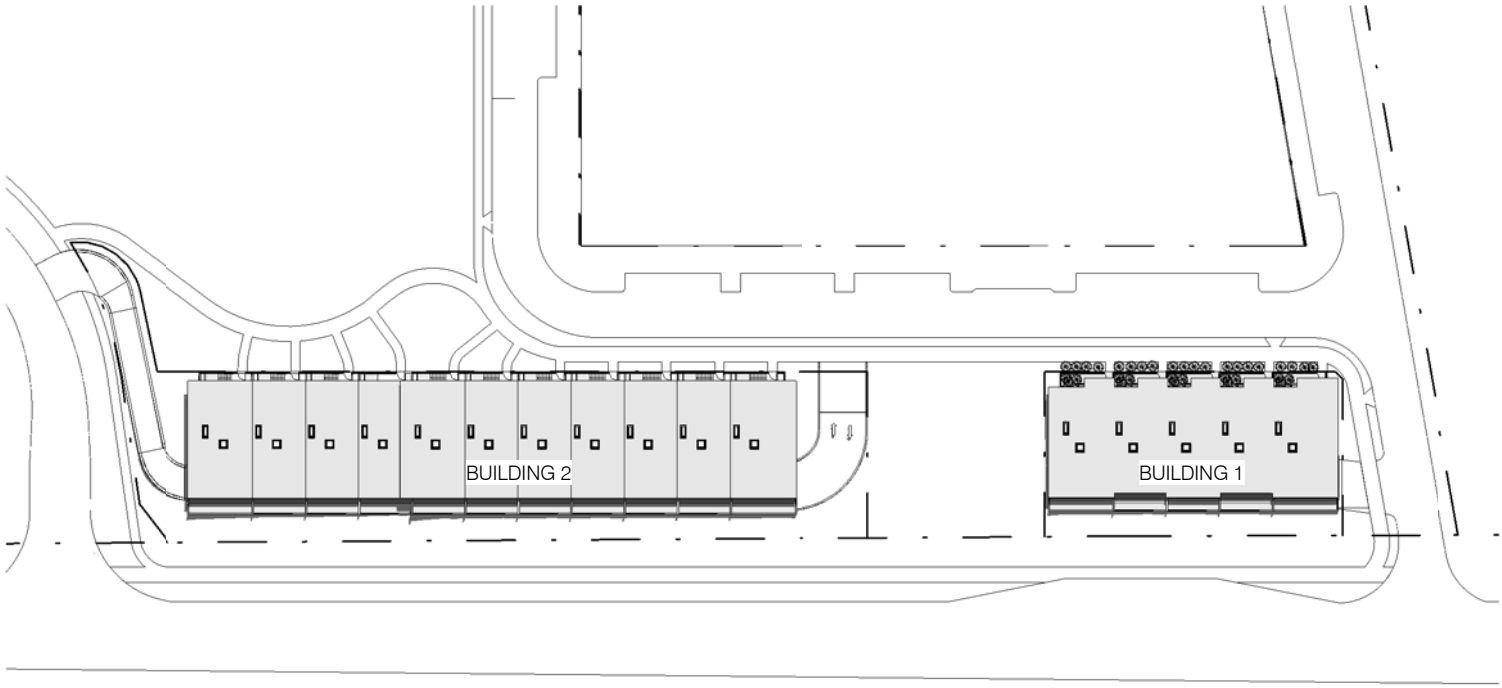
Dec 21, 9am



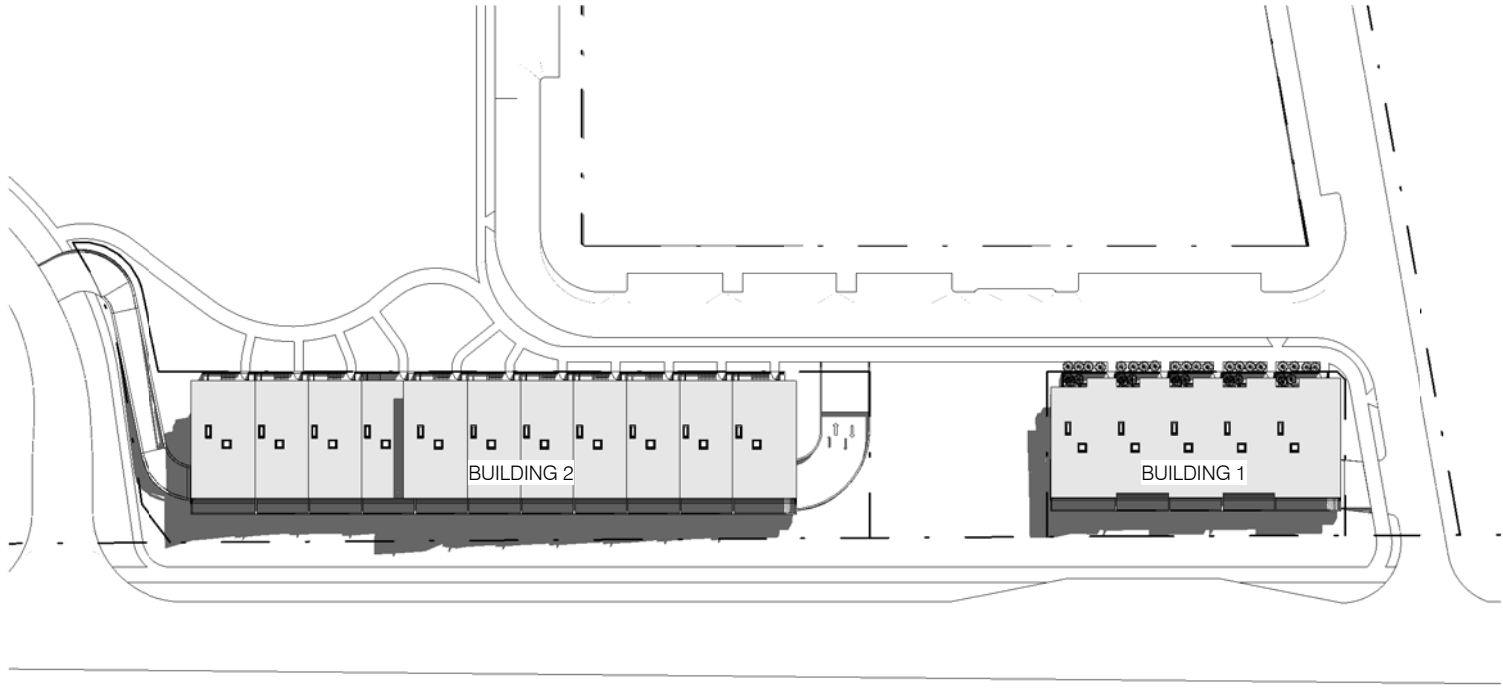
March 21, 9am



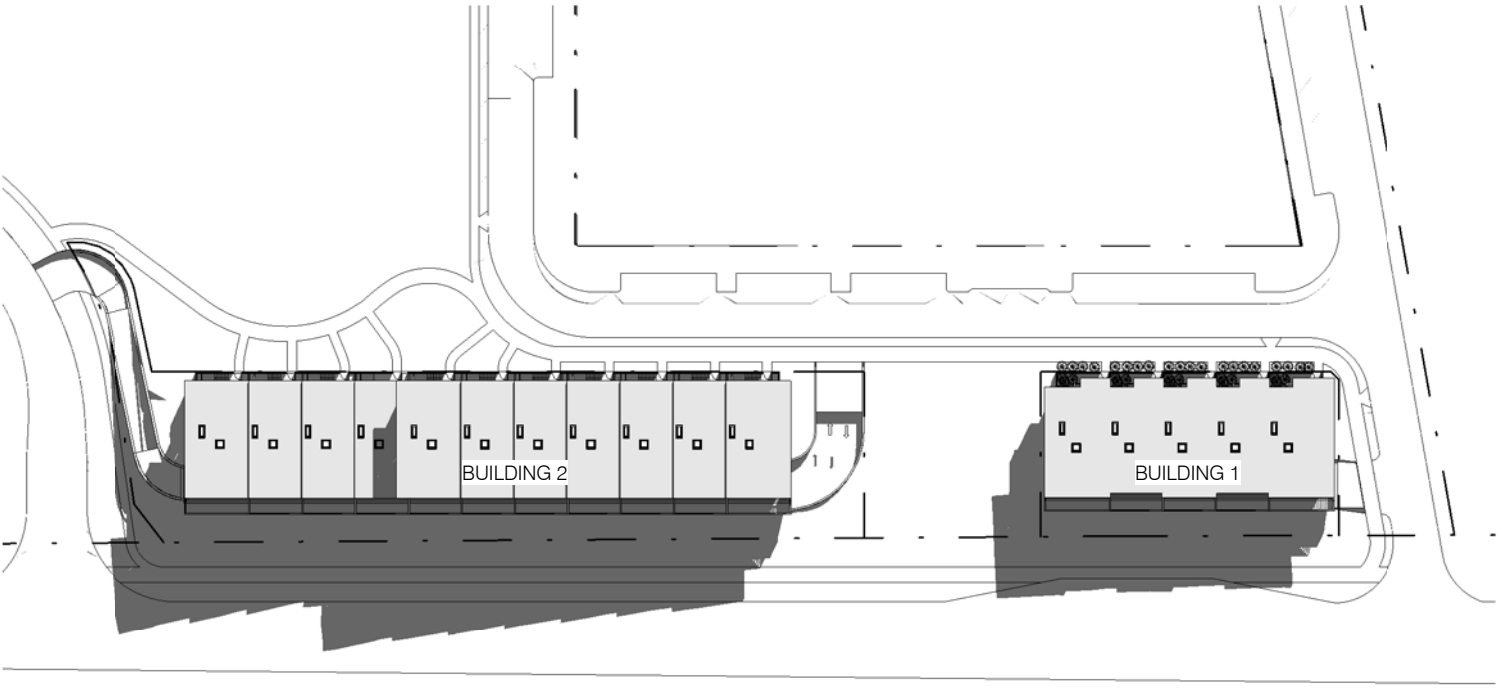
June 21, 9am



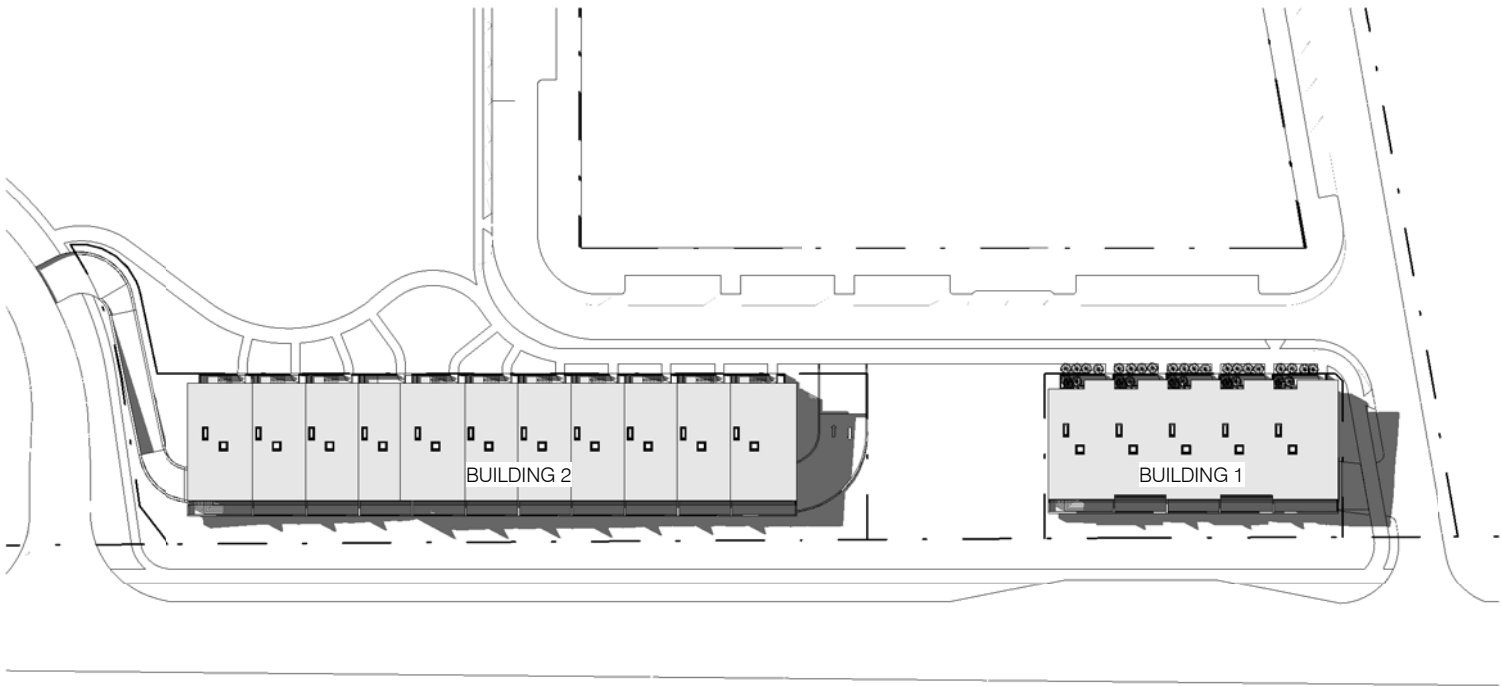
Dec 21, 12pm



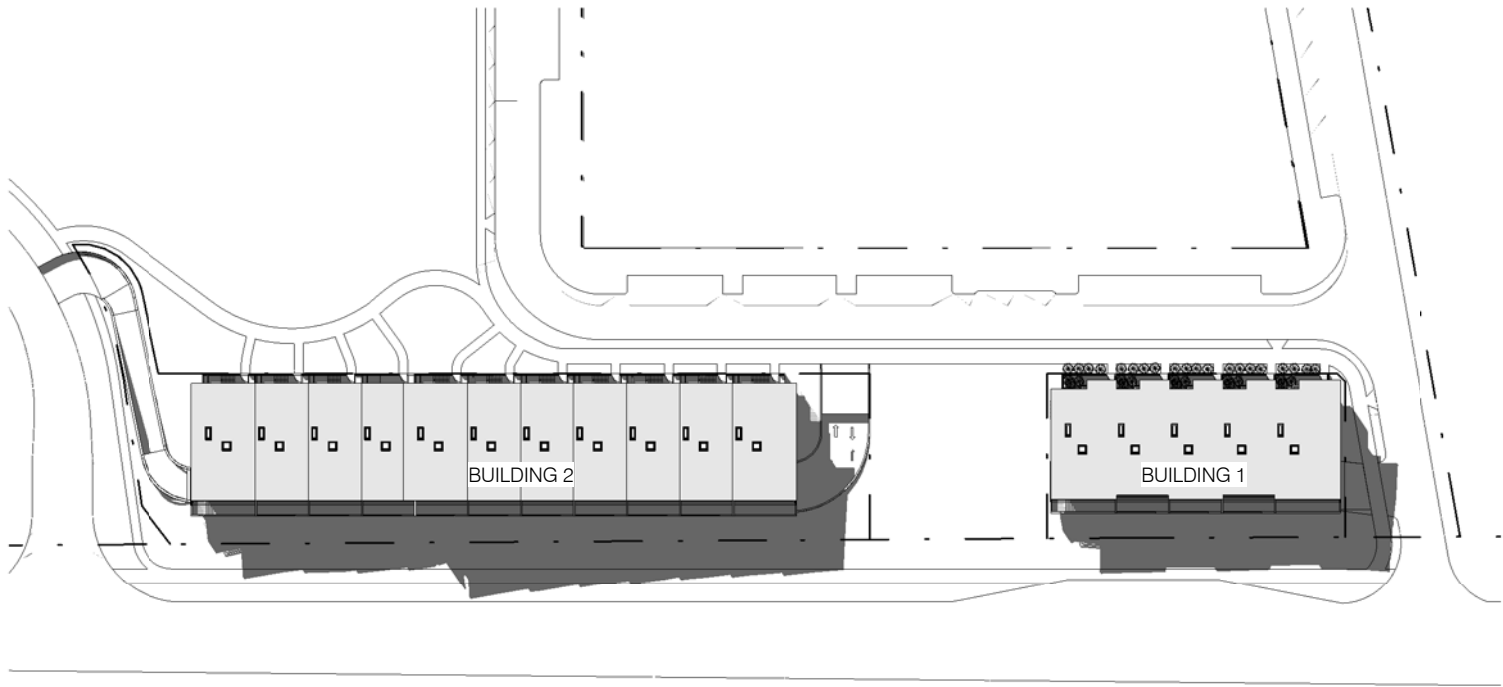
March 21, 12pm



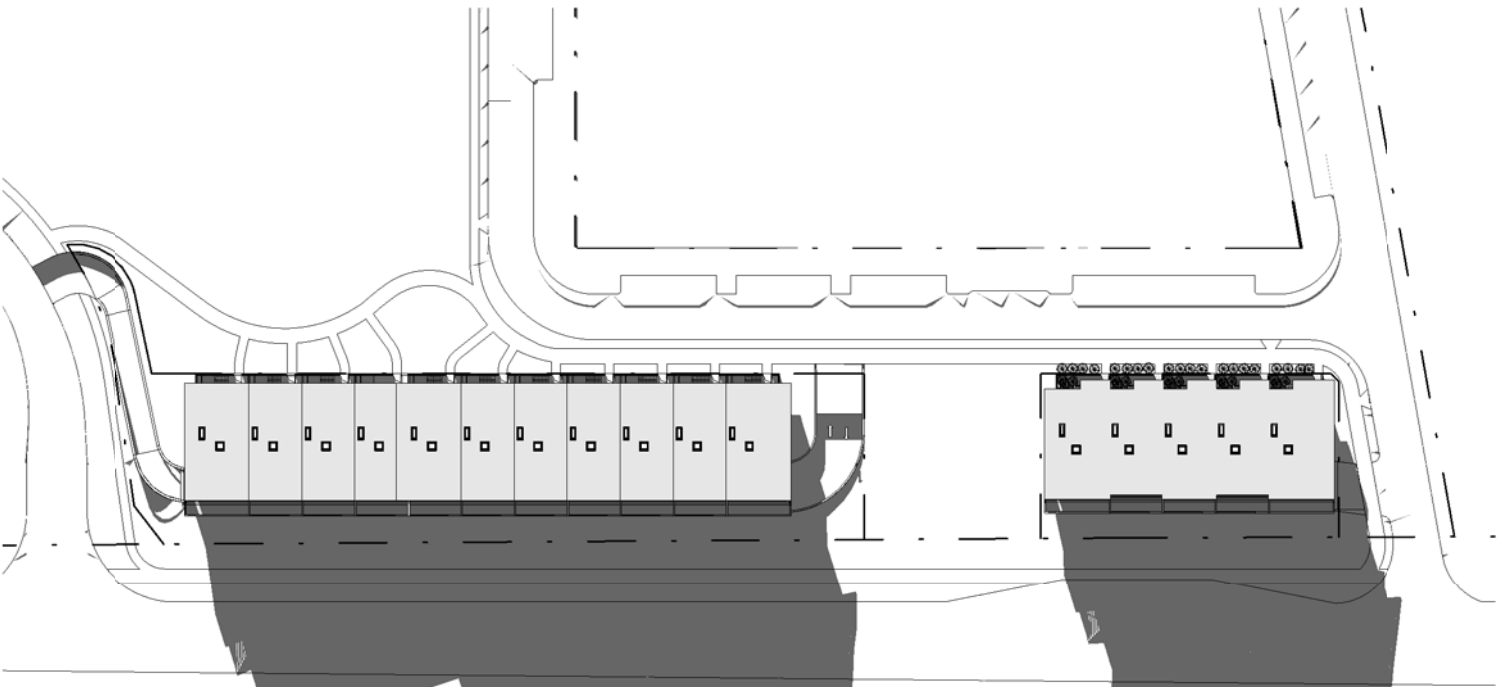
June 21, 12pm



Dec 21, 3pm



March 21, 3pm



June 21, 3pm

- NOTE
- 1 Site and Landscape shown for context only. Refer to Landscape Architect's drawings.
 - 2 Furniture layout shown indicative only.

Do not scale from drawings. Verify all dimensions on site before commencing work. Copying or reproduction of this drawing is strictly prohibited without the consent of Peadar Thopp & Walker P/L. The Architect shall not be liable for any loss or claims whatsoever arising from in respect of any errors arising or resulting from data misinterpretation transferred from the computer system of the Architect to systems of the Client or other Consultants. The recipient of the data shall be responsible for checking accuracy and completeness of data received. Any use of the electronic data in part or whole shall be at the user's risk. The CAD files and their contents are solely representations of the project information and cannot be relied upon beyond the representation shown on PDF versions of the drawings as provided by the Architect.	No:	Amendment:	Chk:	Date:	No:	Amendment:	Chk:	Date:	<div>Key Plan:</div>	<div>Consultants:</div> <div>Landscape:</div> <div>Traffic:</div> <div>Planner:</div> <div>Civil:</div>	<div>Client:</div> <div>Meriton Apartments Pty Ltd</div> <div>Level 11, 528 Kent Street</div> <div>Sydney NSW 2000</div> <div>www.meriton.com.au</div>	<div>PTW Architects</div> <div>Level 17, 9 Castlereagh St</div> <div>Sydney NSW Australia 2000</div> <div>NSW Nominated Architects:</div> <div>A Andersons AO Architects No. 2822</div> <div>J Birrell Architects No. 3816</div> <div>D Jones Architects No. 4778</div> <div>A Rouse Architects No. 5207</div> <div>S Shinton Architects No. 6599</div> <div>A Thopp Architects No. 2047</div>	<div>PTW</div> <div>T + 612 9232 5877</div> <div>F + 612 9221 4139</div>	Approvals	By:	Date:	Project:
	PTW	Approval:	SP	26.08.2010	EPPING PARK, BUILDINGS 1 & 2												
	Client	Approval:						Scale:						Plot Date:	Job No:		
								1 : 1000 @A1						26/08/2010 2:32:19 PM	209003		
Dwg No:								Revision:									
										A1400	PROJECT APPLICATION						