

Rev.	Date	Revision
A	12/11/2010	DA Test of Adequacy
A-1	22/02/2011	Preferred Project
A-2	15/04/2012	S75W MOD1 - March 2012
A-3	16/07/2012	Adaptable Parking
A-4	24/08/2012	Adaptable Parking - 3bed to 1bed
A-5	16/10/2012	S75W MOD2 - October 2012
MOD 3	21/06/2013	S75W MOD 3 - June 2013
MOD 4	10/03/2014	S75W MOD 4 - March 2014

	CONCRETE
CN1	Concrete natural finish
CR1	Concrete render finish
RF1	Roof Finish - Gravel
	MASONRY
PF1	Texture applied finish - White
PT2	Texture applied finish - Light Warm Grey
PT3	Texture applied finish - Dark Grey
ST1	Stone cladding - Slacked grey colour
ST2	Stone cladding - Sandstone Finish
	GLAZING
GL1	Clear Glass Windows
GL2	Lowwood Clear Glass Windows
GL3	Obscure Glazing Balustrade
GL4	Lowwood Coloured Glass
GB1	Clear glass balustrade with metal handrail
WG	Wintergarden
	METALWORKS
MB1	Metal balustrade - Steel Galvanized
MB2	Metal Balustrade - Wood V or Door frames
MF1	Metal Finish - Shading blades
MF3	Metal Finish - Louvre screen
MF4	Metal Finish - Plant Screening
MS1	Metal Finish - Screen to apartment entries
MS3	Aluminium
	TIMBER
TC1	External cladding - Timber Boards
TB1	Timber Floor Boards - Natural Stain

Client _____



Drawing Name

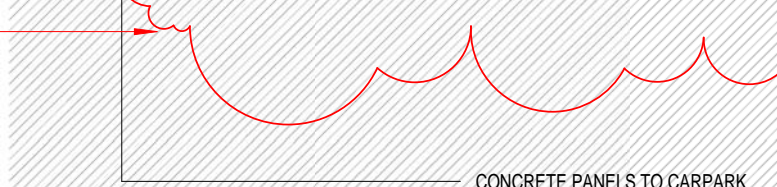
Elevations - BLDG C
North & South

4410 A-0506 MOD 4



Figure 1 displays five color swatches used in the study:

- PF1: A light gray swatch.
- PF2: A medium gray swatch.
- PF3: A dark gray swatch.
- ST1: A blue and white marbled pattern swatch.
- ST2: A light beige pattern with a grid of thin lines swatch.



3 ELEVATION
BLDG C - WEST 1:200

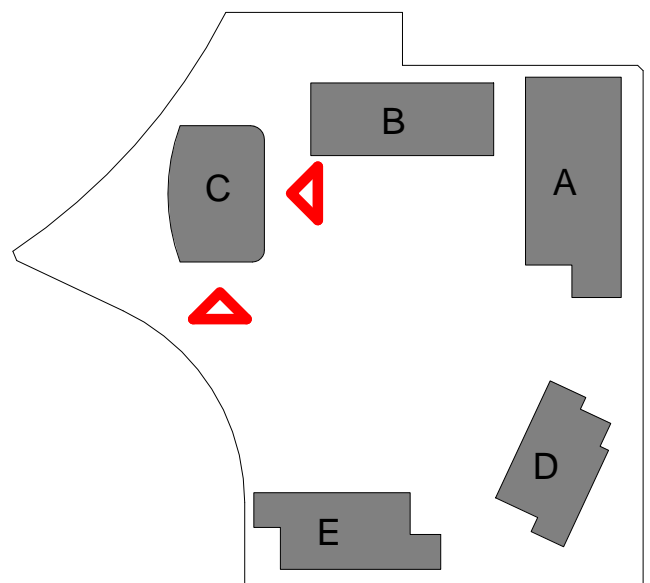
FOR APPROVAL

Rev.	Date	Revision
A	12/11/2010	DA Test of Adequacy
A-1	22/02/2011	Preferred Project
A-2	15/04/2012	S75W MOD1 - March 2012
A-3	16/07/2012	Adaptable Parking
A-4	24/08/2012	Adaptable Parking - 3bed to 1bed
A-5	16/10/2012	S75W MOD2 - October 2012
MOD 3	21/06/2013	S75W MOD 3 - June 2013
MOD 4	10/03/2014	S75W MOD 4 - March 2014

EXTERNAL FINISHES

CONCRETE	
CN1	Concrete natural finish
CR1	Concrete render finish
RF1	Roof Finish - Grand
MASONRY	
PF1	Texture applied finish - White
PF2	Texture applied finish - Light Warm Grey
PF3	Texture applied finish - Dark Grey
ST1	Stone cladding - Stacked grey colour
ST2	Stone cladding - Sandstone Finish
GLAZING	
GL1	Clear Glass Windows
GL2	Louvered Clear Glass Windows
GL3	Obscure Glazing Balustrade
GL4	Feature Coloured Glass
GB1	Clear glass balustrade with Metal handrail
WG	Wintergarden
METALWORKS	
MB1	Metal Balustrade - Steel Galvanised
MF1	Metal Finish - Window - Door Frames
MF2	Metal Finish - Shading blades
MF3	Metal Finish - Louvre screen
MS1	Metal Finish - Plant Screening
MS2	Metal Finish - Screen to apartment entries
MS3	Aluminum Panel
TIMBER	
TC1	External cladding - Timber Boards
TB1	Timber Floor Boards - Natural Stain

NOTE: AS BUILT LEVELS MAY VARY +/- 30mm FROM NOTMINATED SSLs



Client



Billbergia
creating communities®

Project

STAGE 2A + 3A
WALKER ST.
RHODES
for
Billbergia Developments

Drawing Name

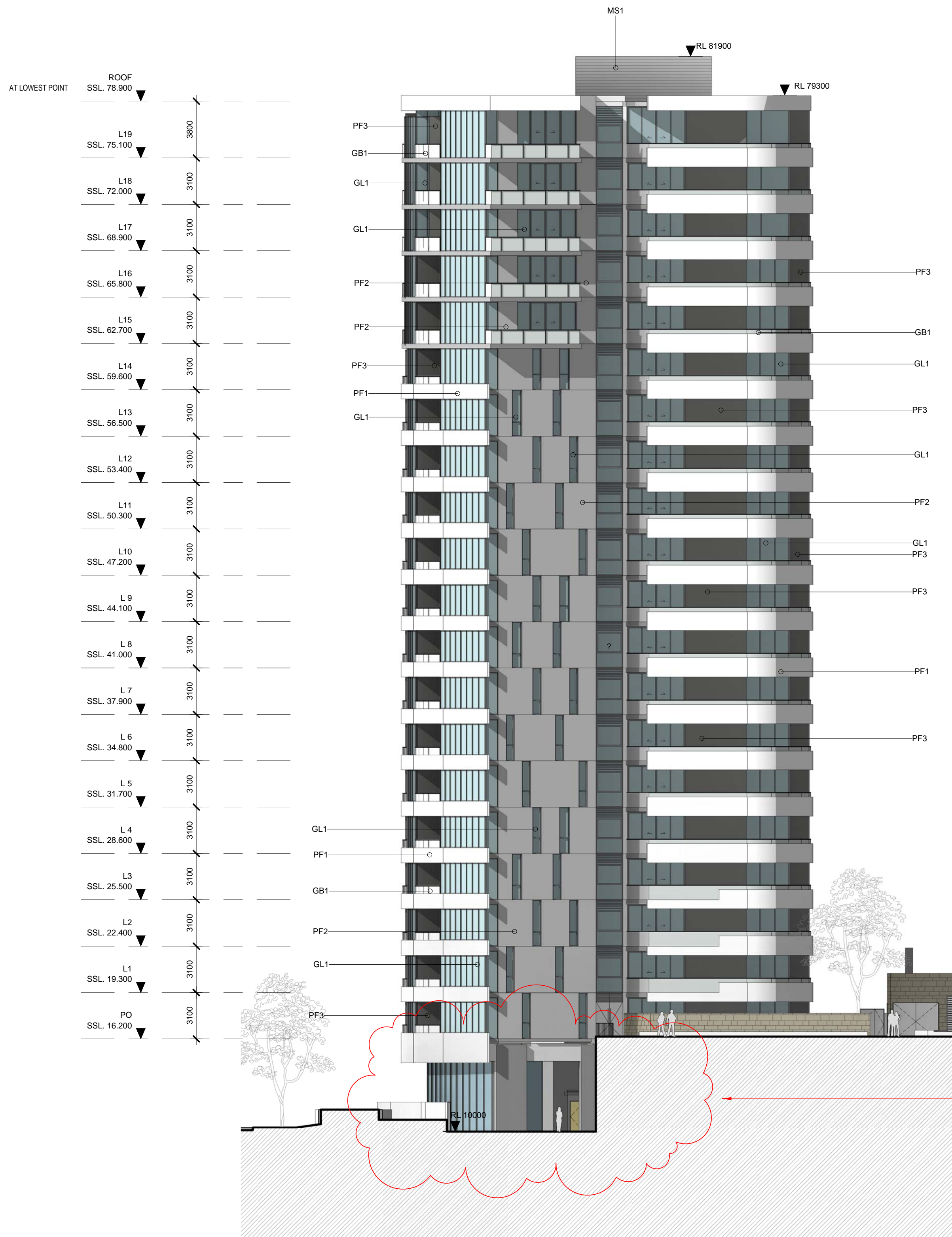
Elevations - BLDG C
East & West

Date 13/05/2014 Scale 1 : 200 Sheet Size @ B1

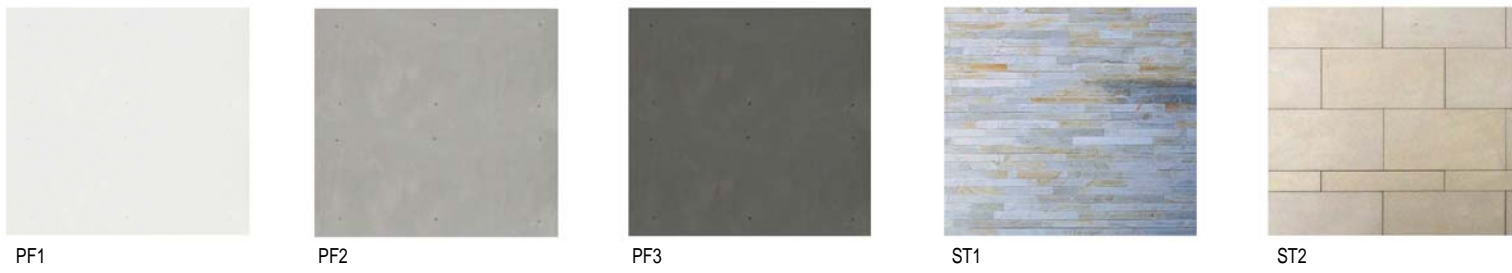
Reg No. Drawn Chk.
ML JP

Job No. Drawing No. Revision

4410 A-0507 MOD 4



2 ELEVATION
BLDG C - SOUTH
1 : 200



1 ELEVATION
BLDG C - EAST
1 : 200

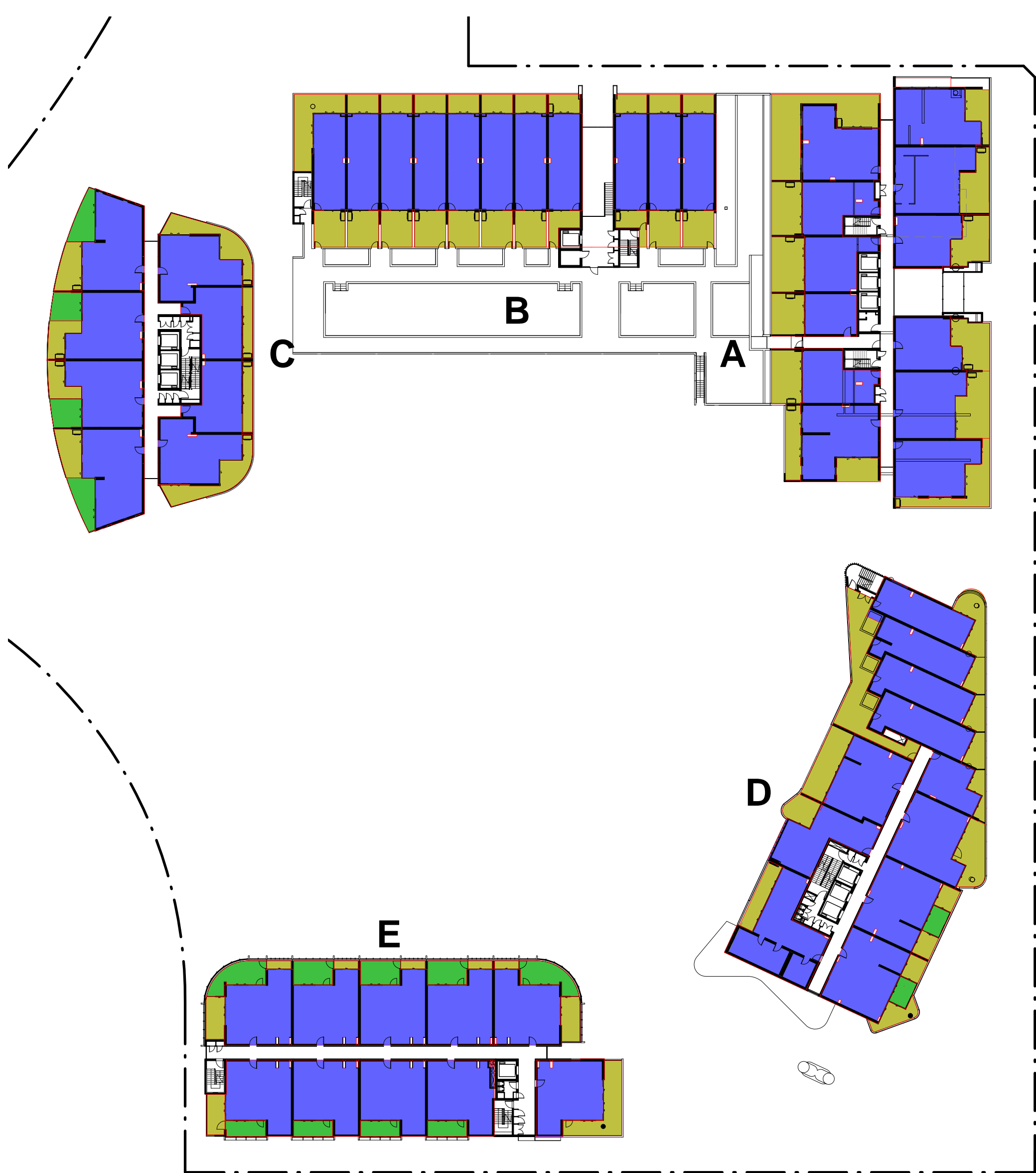


BASEMENT 2

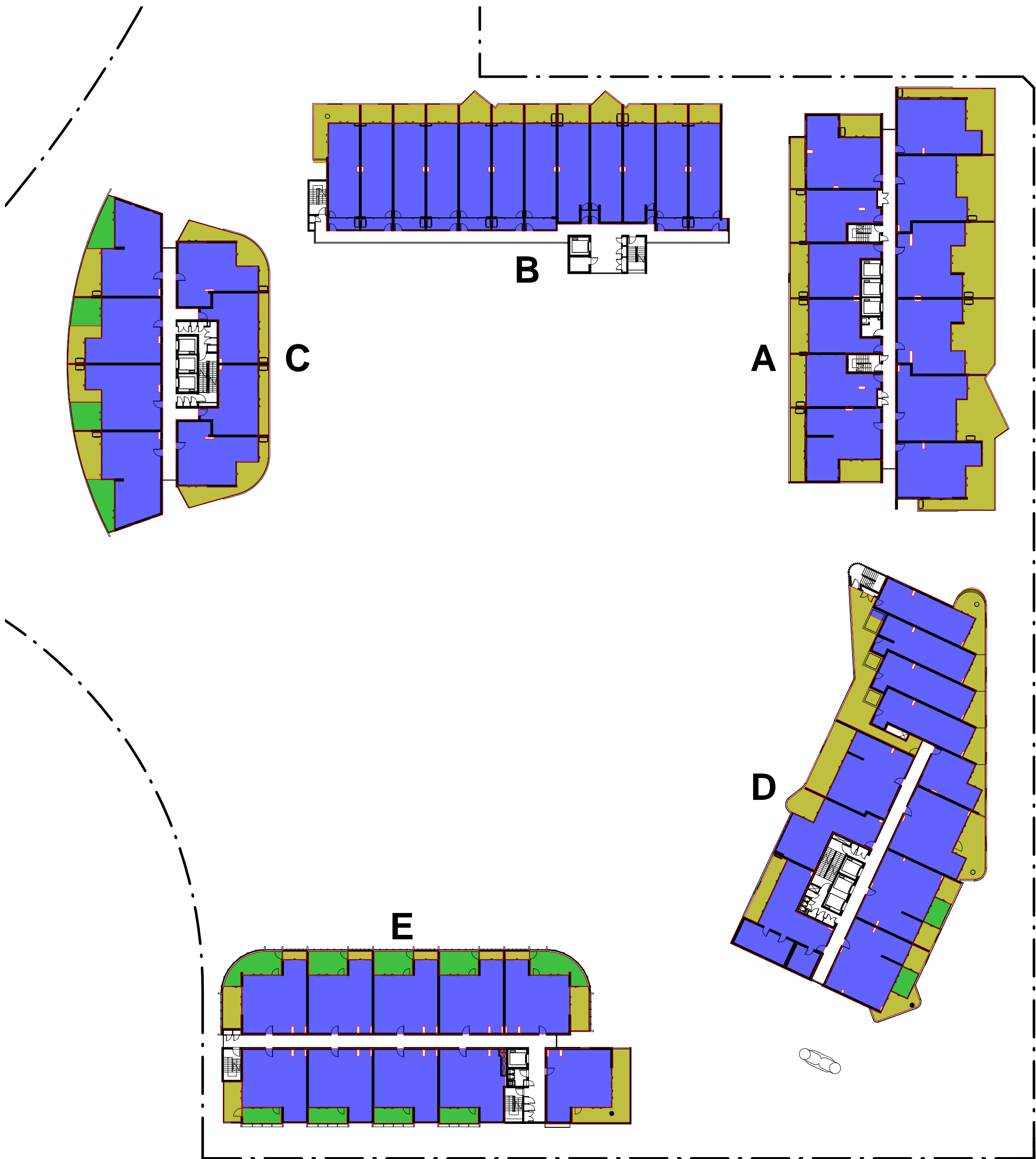
BASEMENT 1



PODIUM



LEVEL 1



LEVEL 2-4

- Area
- Common
- Home Offices
- Public Facility
- Residential
- Retail
- Winter Garden

Accepted and utilising this document the recipient agrees that SJB Architecture (NSW) Pty Ltd ACN 081 094 724 T/A SJB Architects, retain all common law, statutory law and other rights including copyright and intellectual property rights. The recipient agrees not to use this document for any purpose other than its intended use to waive all claims against SJB Architects resulting from unauthorised changes, or to reuse the document on other projects without the prior written consent of SJB Architects. Under no circumstances shall transfer of this document be deemed a sale. SJB Architects makes no warranties of fitness for any purpose.

The Builder/Contractor shall verify job dimensions prior to any work commencing. Figured dimensions shall take precedence over scaled work.

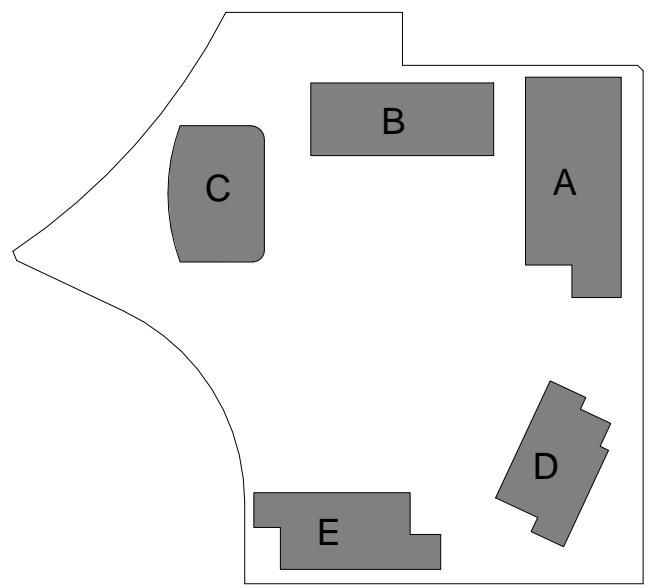
FOR APPROVAL		
Rev.	Date	Revision
A	12/11/2010	DA Test of Adequacy
A-1	22/02/2011	Preferred Project
A-2	15/04/2012	S7SW MOD1 - March 2012
A-3	16/07/2012	Adaptable Parking
A-4	24/08/2012	Adaptable Parking - 3bed to 1bed
A-5	16/10/2012	S7SW MOD2 - October 2012
MOD 3	21/06/2013	S7SW MOD 3 - June 2013
MOD 4	10/03/2014	S7SW MOD 4 - March 2014

GFA SUMMARY

	BLDG-A		BLDG-B		BLDG-C		BLDG-D		BLDG-E	
	GFA RETAIL	GFA RES	GFA RES	GFA RETAIL	GFA RES	GFA RETAIL	GFA RES	GFA RETAIL	GFA RES	GFA RES
BASE -02										
BASE -01										
PODIUM	463	194.5	424	201	613	575	111		325	785
LEVEL -01		808.6	833		613		817			785
LEVEL -02		910.4	862		613		817			785
LEVEL -03		910.4	862		613		817			785
LEVEL -04		910.4	862		613		817			785
LEVEL -05		910.4	862		613		946			
LEVEL -06		910.4			613		950			
LEVEL -07		748.1			613		646			
LEVEL -08		748.1			613		646			
LEVEL -09		748.0			613		646			
LEVEL -10		748.0			613		646			
LEVEL -11		748.0			613		646			
LEVEL -12		748.0			613		646			
LEVEL -13		745.3			613		646			
LEVEL -14		745.3			613		646			
LEVEL -15		745.3			612		646			
LEVEL -16		742.3			612		646			
LEVEL -17		742.3			608		646			
LEVEL -18		742.3			608		646			
LEVEL -19		748.7			608		650			
LEVEL -20		748.7					650			
LEVEL -21		748.7					650			
LEVEL -22		741.3					650			
LEVEL -23		741.3					650			
LEVEL -24		741.3					650			
TOTAL	463	19009	3830	504	12243	686	16816	417	3925	

Residential GFA Proposed
Retail GFA Proposed
TOTAL GFA Proposed

55,823 sqm
2070sqm
57,893sqm



Client



Project

STAGE 2A + 3A
WALKER ST.
RHODES
for
Billbergia Developments

Drawing Name

Area Calculations -
GFA

Date

13/05/2014

Scale

1 : 500

Sheet Size

@ B1

Reg No.

Drawn

ML

Chk.

JP

Job No.

Drawing No.

Revision

4410

A-2901 MOD 4

PREVIOUSLY DWG A-0221

SJB Architects
Level 2, 480 Crown St
Surrey Hills NSW
2010 Australia
T 61 2 9380 9911
F 61 2 9380 9922
www.sjb.com.au
Nominated Architects
Adam Haddock 7188
John Pradel 7004

