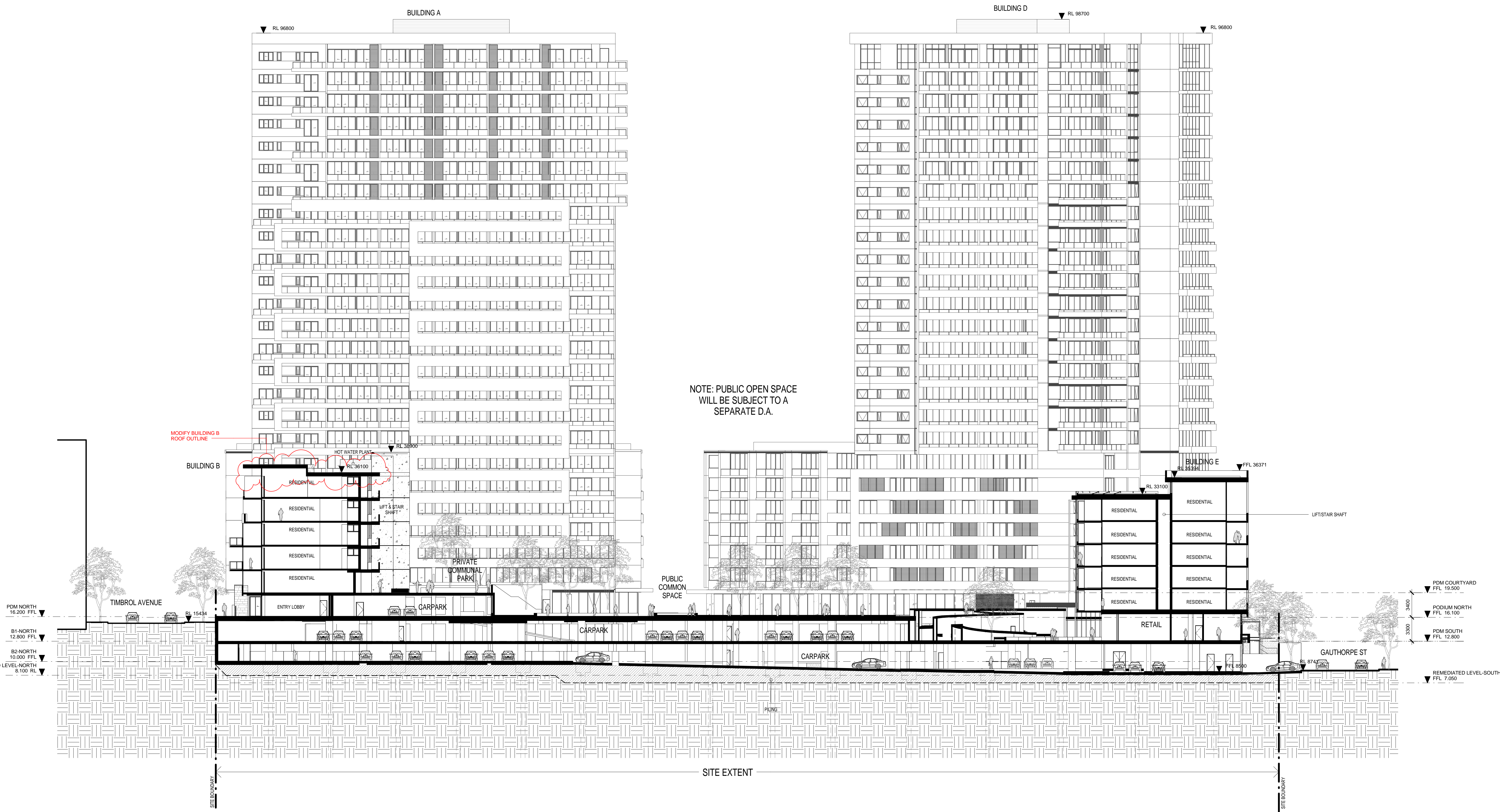
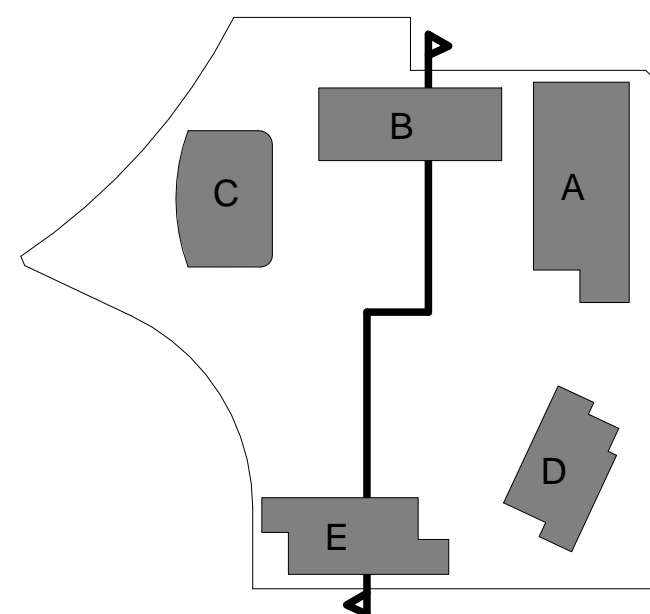


S75W - FOR APPROVAL

| Rev. | Date | Revision |
|------|------------|----------------------------------|
| A | 12/11/2010 | DA Test of Adequacy |
| A-1 | 22/02/2011 | Preferred Project |
| A-2 | 15/04/2012 | S75W MOD1 - March 2012 |
| A-3 | 16/07/2012 | Adaptable Parking |
| A-4 | 24/08/2012 | Adaptable Parking - 3bed to 1bed |
| A-5 | 16/10/2012 | S75W MOD2 - October 2012 |



1 SECTION
A-5001 North-South Site Section 1:250



Client



Billbergia
creating communities®

Project

STAGE 2A + 3A
WALKER ST.
RHODES
for
Billbergia Developments

Drawing Name

North-South Site
Section

Date

22.10.2012

Scale

1 : 250

Sheet Size

@ B1

Reg No.

Drawn

Chk.

JT

JP

Job No.

Drawing No.

Revision

4410

A-0601

A-5

SJB Architects

Level 2, 480 Crown St

Surry Hills NSW

2010 Australia

T 61 2 9380 9911

F 61 2 9380 9922

www.sjb.com.au

Nominated Architects

Adam Haddow 7188

John Pradel 7004

