

In accepting and utilizing this document the recipient agrees that SJB Architects (NSW) Pty. Ltd. ACN 081 094 724 T/A SJB Architects, retain all common law, statutory law and other rights including copyright and intellectual property rights. The recipient agrees not to use this document for any purpose other than its intended use, to waive all claims against SJB Architects resulting from unauthorised changes, or to issue the document on other projects without the prior written consent of SJB Architects. Under no circumstances shall transfer of this document be deemed a sale. SJB Architects makes no warranties of fitness for any purpose.

The Builder/Contractor shall verify job dimensions prior to any work commencing. Figured dimensions shall take precedence over scaled work.

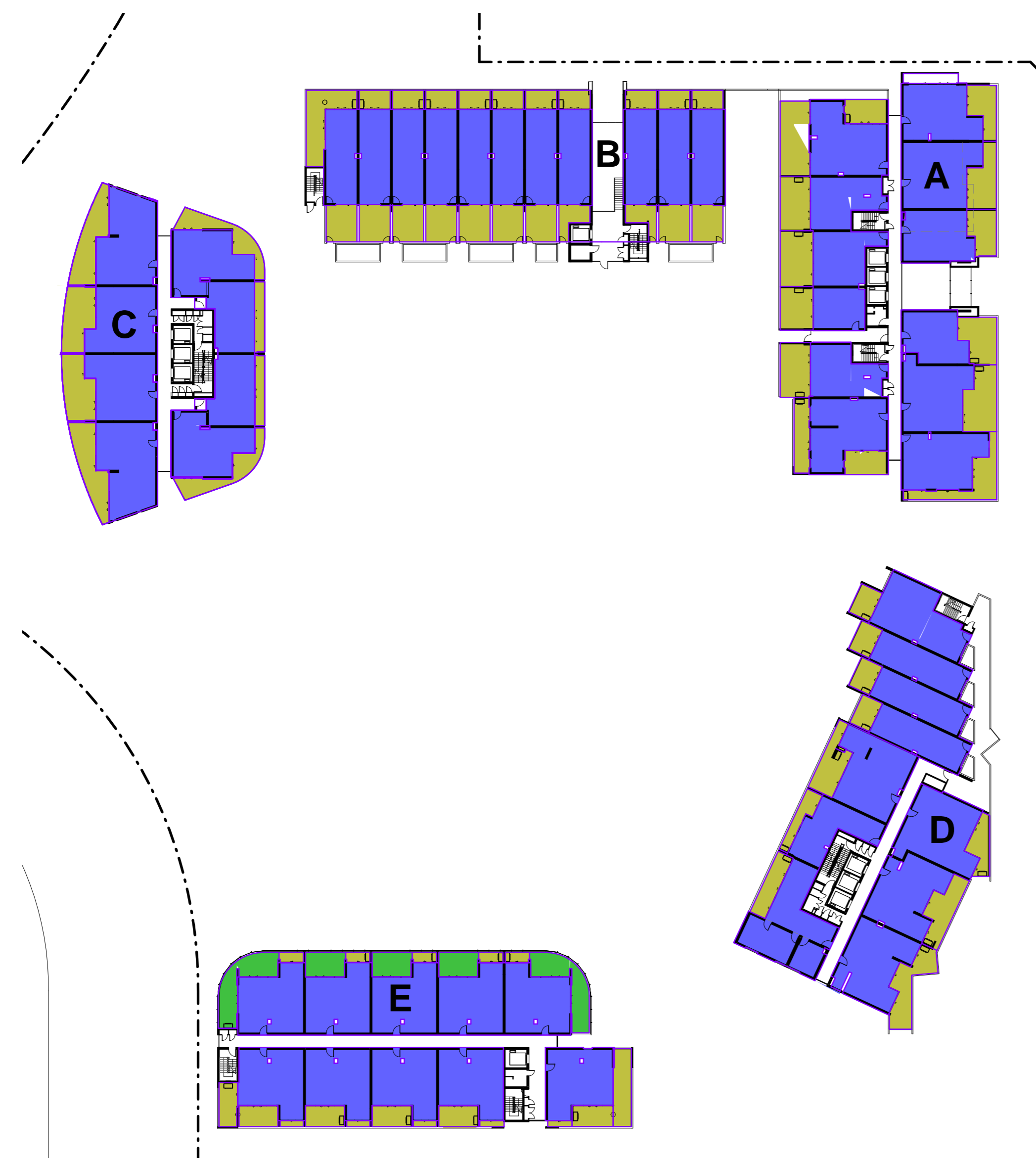
Rev.	Date	Revision
A	12/11/2010	DA Test of Adequacy
A-1	22/02/2011	Preferred Project



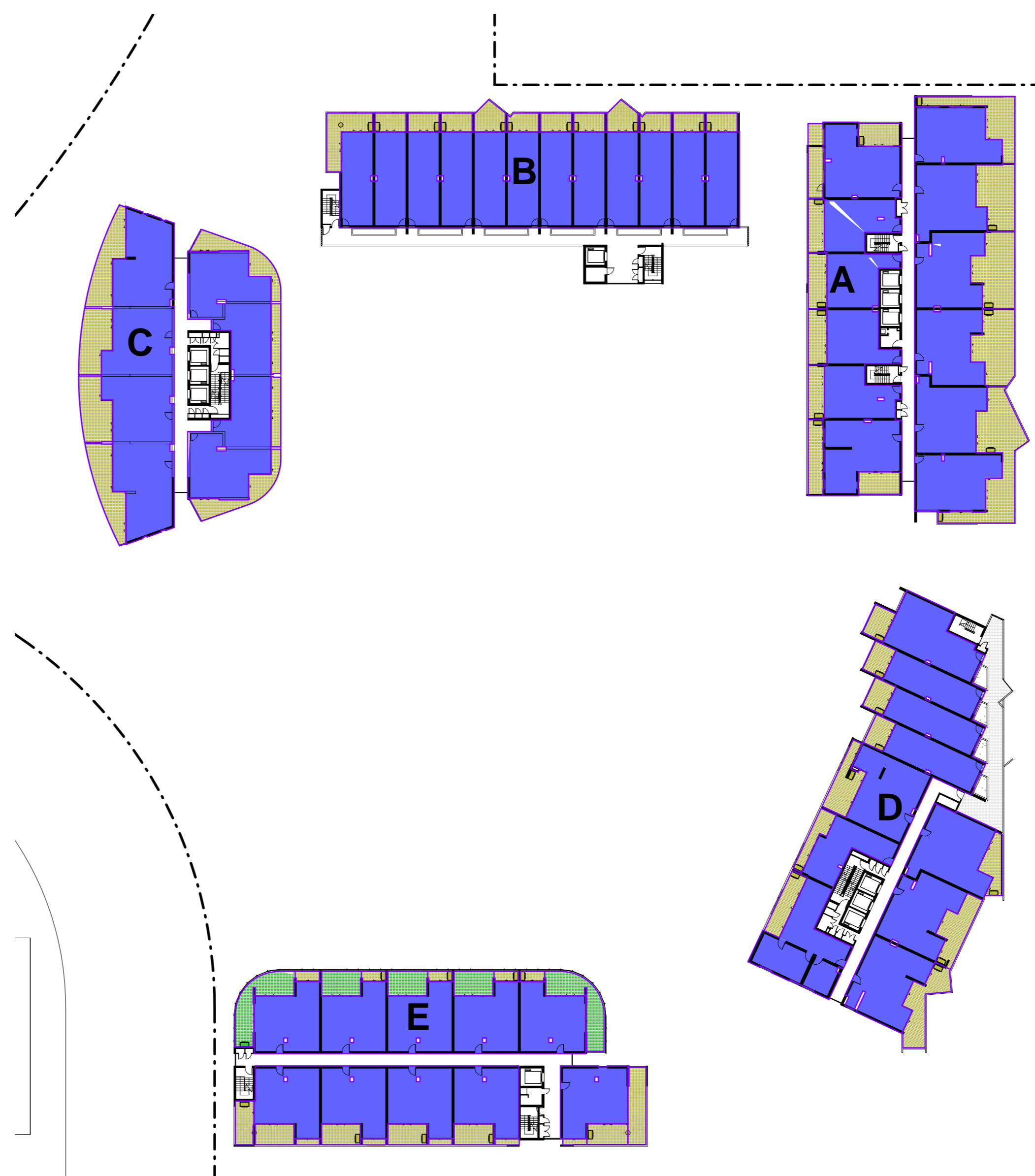
**BASEMENT 1**



**PODIUM**



**LEVEL 1**



**LEVEL 2-4**

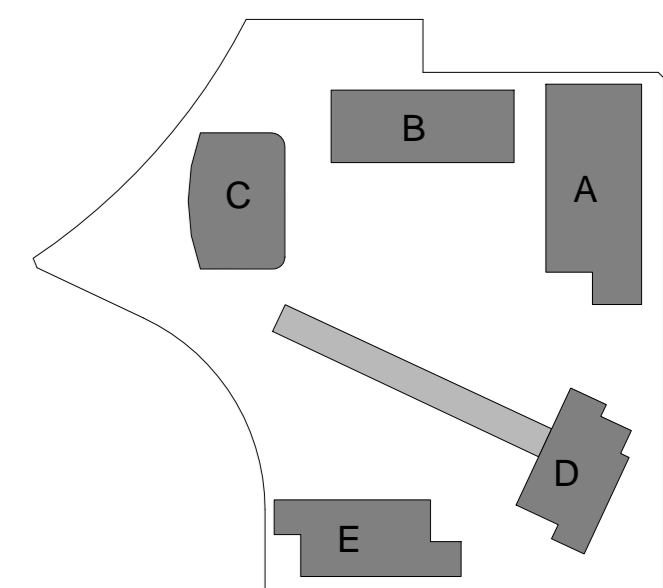
- Area
- Common
- Home Offices
- Managers Flat
- Public Facility
- Residential
- Retail
- Winter Garden

**GFA SUMMARY**

	BLDG-A		BLDG-B		BLDG-C		BLDG-D		BLDG-E	
	GFA RETAIL	GFA RES.	GFA RES.	GFA RES.	GFA RETAIL	GFA RES.	GFA RES.	GFA RETAIL	GFA RES.	
BASE - 02									110	
BASE - 01							90		270	
PODIUM	140	188	440	610	440					475
LEVEL - 01		826	631	610					783	573
LEVEL - 02		905	690	610					783	766
LEVEL - 03		905	690	610					783	766
LEVEL - 04		905	690	610					783	766
LEVEL - 05		905	690	610					824	
LEVEL - 06		905	690	610					824	
LEVEL - 07		742		610					644	
LEVEL - 08		742		610					644	
LEVEL - 09		742		610					635	
LEVEL - 10		742		610					635	
LEVEL - 11		742		610					635	
LEVEL - 12		742		610					635	
LEVEL - 13		743		610					635	
LEVEL - 14		743		610					635	
LEVEL - 15		743		610					635	
LEVEL - 16		743		609					635	
LEVEL - 17		743		609					635	
LEVEL - 18		743		609					635	
LEVEL - 19		744		609					629	
LEVEL - 20		744							629	
LEVEL - 21		744							629	
LEVEL - 22		744							629	
LEVEL - 23		744							629	
LEVEL - 24		744							629	
<b>TOTAL</b>	<b>140</b>	<b>18890</b>	<b>3829</b>	<b>12196</b>	<b>530</b>	<b>16192</b>	<b>380</b>	<b>3829</b>		

**GFA SUMMARY**  
 Residential GFA Available 54936 sqm  
 Retail GFA Minimum 1050 sqm  
**TOTAL GFA 55986 sqm**

Residential GFA Proposed 54936 sqm  
 Retail GFA Proposed 1050 sqm  
**TOTAL GFA Proposed 55986 sqm**



Client



Project

**STAGE 2A + 3A**  
**WALKER ST.**  
**RHODES**  
 for  
 Billbergia Developments

Drawing Name

**Area Calculations - GFA**

Date 08/12/10 Scale 1 : 500 Sheet Size @ B1

Reg No. JT/NH Drawn JP

Job No. 4410 Drawing No. A-0221 Revision A-1

**SJB Architects**  
 Level 2, 490 Crown St  
 Surry Hills NSW  
 2010 Australia  
 T 61 2 9380 9811  
 F 61 2 9380 9822  
 www.sjb.com.au



Nominated Architects  
 Adam Madgwick 7188  
 John Pradel 7004