

Royal Randwick Racecourse Spectator Precinct Master Plan

Landscape Design Report



Prepared by:  ASPECT Studios™

For: Australian Turf Club
In association with: Fitzpatrick Partners, Arup
Date: 07.11.2011
Revision: D

CONTENTS

1.0 Introduction	1
1.1 Context	1
2.0 Site Analysis	2
3.0 Concept Design	4
Design Approach	
4.0 Landscape Structure	5
Pedestrian Axis	
Theatre of the Horse	
Formal Spectator Lawns	
Event Lawn and Tote Building	
Family lawn	
Members Area	
Alison Road Entry	
Leisure Garden	
Leger Lawn	
Heritage Gardens	
5.0 Character and Materials Palette	9
6.0 Landscape Master Plan - Stage 1	10
6.1 Landscape Master Plan - Stage 2	11
7.0 Landscape Sections	12
8.0 Planting Palette	15
Trees and Shrubs	
Perennial Planting	
Shade Tolerant Planting	
Annuals	
Plant Schedule	

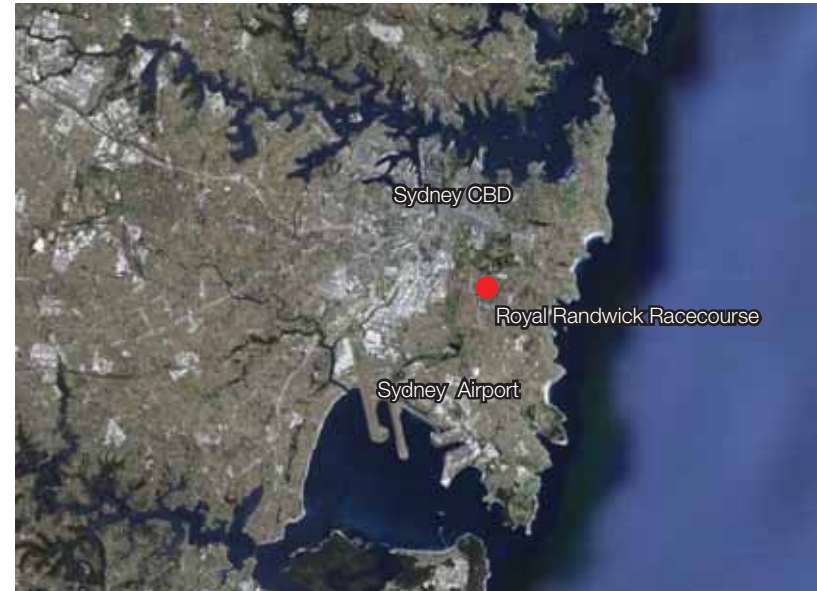
1.0 INTRODUCTION

Royal Randwick Racecourse is one of Australia's most prestigious race tracks and Sydney's largest. The site is home to a number of both racing and non racing events located within both buildings and outdoor areas. The proposed redevelopment of the Randwick Racecourse spectator precinct by the Australian Turf Club, will provide the opportunity to redefine the racing experience and establish Randwick as Sydney's premier racing and event destination. The transformation will offer a wider range of facilities for a larger demographic inclusive of traditional racing punters, young professionals and families.

This report describes the landscape design principles and components of the design with plans and sections supported by precedent images to illustrate the design intent.

1.1 CONTEXT

Randwick Racecourse is located in Sydney's Eastern Suburbs, approximately 6km from Sydney CBD with good bus connections to Central Station and CBD via the sites main entry on Alison Road and on Anzac Parade. The site is bound by Alison Road on its northern boundary with Centennial Park located beyond. Wansey Road forms the sites eastern boundary with low density residential housing located on this street. The site is bound by High Street to the south with The University of New South Wales located on the opposite side of the street. Further low to medium density housing backs on to part of the racecourses on it's western boundary with a future development site located on the former tram depot directly west of the spectator precinct.



Regional Context



Local Context



Royal Randwick Racecourse



Extent of Work

2.0 SITE ANALYSIS

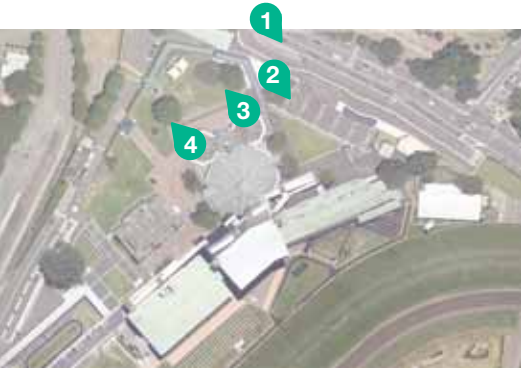
The Spectator Precinct is comprised of a number of building of varying styles and in varying condition which include:

- The QEII Stand
- The Paddock Stand
- The Officials Stand
- The Tote Building and octagonal Pavillion
- The SWAB Building fronting Alison Road and
- The Tea House

These building are set within open and flexible landscaped areas with brick paved circulation paths and open lawn space that cater for temporary events. 8 large mature fig trees are located within the spectator precinct in addition to 1 Brushbox (*Lophostemon confertus*) located in front of the officials stand. There are also a further 3 mature figs located outside of the spectator precinct in front of the Alison Road Public entry and to the west of the officials stand.

Planted garden beds are located towards the boundaries of the site to allow as much internal flexibility as possible. Gardens and turf areas are regularly maintained and are kept need and tidy to emphasis the formal setting.

Recent works to the Alison Road frontage include new asphalt and cobble paving and shade structures around the heritage SWAB building and a new taxi way / carpark with street planting to Alison Road. Further recent works include new day stall building and taxi drop off on the western edge of the spectator precinct.



1 View from Alison Road of streetscape entry treatment, and race day bus shelter



2 Plaza surrounding Swab building with formal planting



3 Existing large fig trees in open turf



4 Existing large fig tree adjacent to Members entry turnstiles and childrens play area



5 View towards Tote Buildings and Randwick Pavillion



6 Looking towards the Tea House with formal gardens



7 Heritage turnstiles to tram line



8 Large mature fig tree - 'The Meeting Tree'



9 Large fig tree in poor condition



10 View from spectator lawn towards Leger Lawn



11 View from spectator lawn towards Officials Stand, Members Lawn and Winning Post

Royal Randwick Spectator Precinct Section 75W

3.0 CONCEPT DESIGN

DESIGN APPROACH

The scheme recognises the existing structure and heritage context of the site as the basis for the public domain and landscape proposals. Layered above this, the design solution brings a new identity to the Australian Turf Club and transforms the grounds based on the celebration and colourful sense of occasion associated with a day at the races. The landscape has been designed to be flexible and recognises the transformative effects that the future facilities and uses for the precinct will have, and the increased intended audience of users that it will attract.

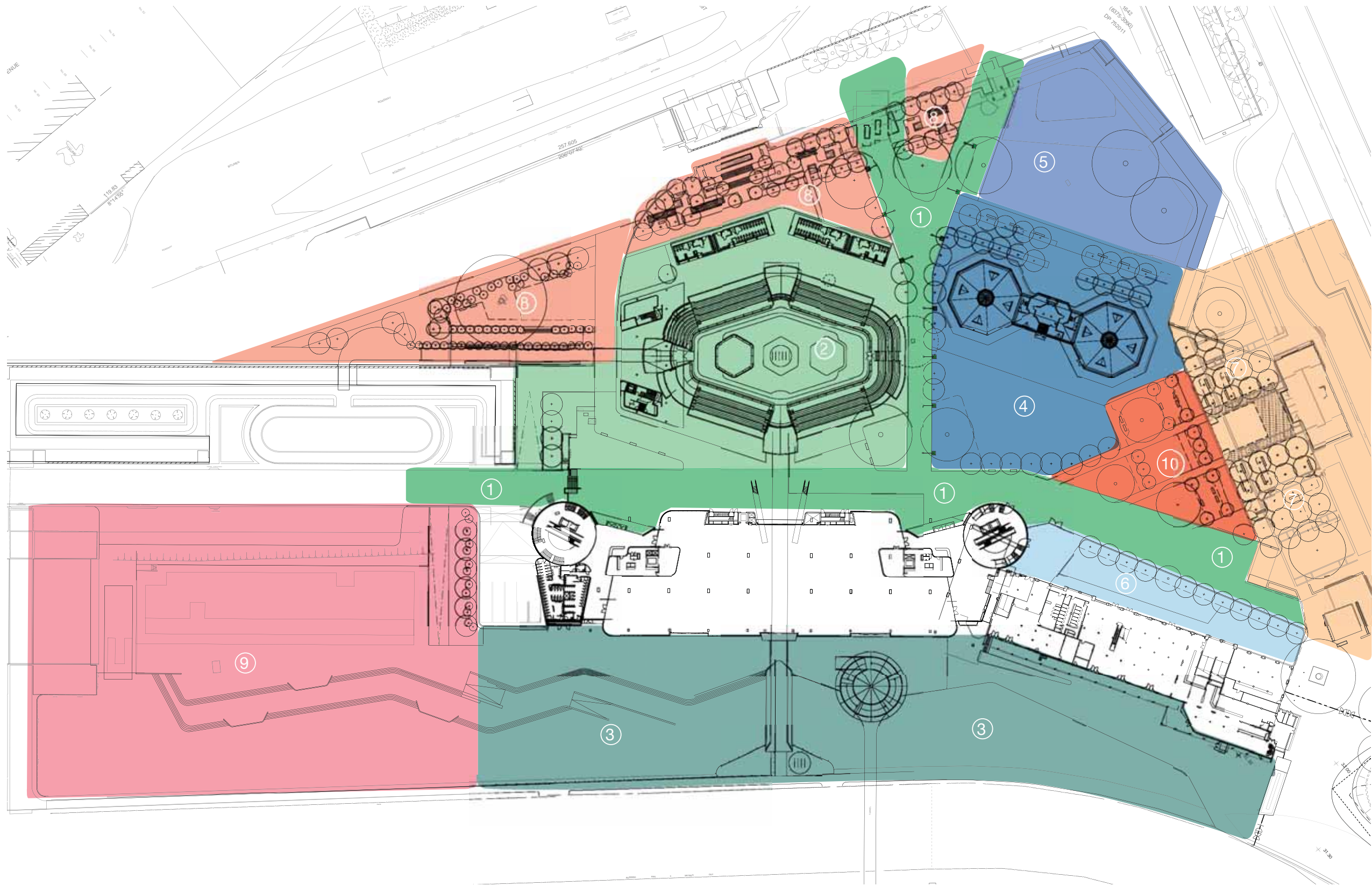
The design aims to achieve the following considerations:

- > Create a theatrical landscape of high drama to be celebratory and iconic
- > Strengthen overall legibility through signage + way finding
- > Retain existing significant trees and recognise the setting of existing heritage items
- > Re-use paving materials, and established plants with high cultural value where possible
- > Create a strong sense of place through the adaptive re-use of materials, structures, and architectural elements
- > Ensure consideration is given to interfaces with future development within the site
- > Create richness of experience through the variety of spaces, during both events and non-race days
- > Create a planting palette that is flexible and can accommodate seasonal carnival event colours and displays
- > Provide appropriate robust tree selections that celebrate the functions of the space whilst minimising maintenance inputs
- > Adhere to WSUD and ESD principles in terms of stormwater management, selection of low water-use plants and porous paving materials,

4.0 LANDSCAPE STRUCTURE

The following diagram provides a breakdown of the various landscape spaces within the spectator precinct. A brief description of the proposal for each space is provided on the following page.

- ① Pedestrian Axis
- ② Theatre of the Horse
- ③ Formal Spectator Lawns
- ④ Event Lawn + Tote Building
- ⑤ Family Lawn
- ⑥ Members Area
- ⑦ Alison Road Entry
- ⑧ Leisure Gardens
- ⑨ Leger Lawn
- ⑩ Heritage Gardens



Royal Randwick Spectator Precinct Section 75W

4.0 LANDSCAPE STRUCTURE

A bold and dramatic landscape setting will evoke the excitement and energetic spirit of racing, while unifying the precinct and complementing the built form. The landscape design will provide a variety of flexible spaces and amenities to accommodate the various events and user groups and includes:

PEDESTRIAN AXIS

A holistic approach has been applied to the landscape master plan with pedestrian, vehicular and equine circulation networks forming a vital factor in the transformation of the spectator precinct. A hierarchy of accessible and paved paths assists in directing pedestrians to amenities such as food outlets and toilets. Two primary pedestrian axis paths occur within the precinct. The first runs north- south from the members and public entry points on the northern boundary of the site, between the proposed Theatre of the Horse and heritage Tote Building and terminating at the new grandstand building. Existing mature fig trees provide a strong frame to the axis with the relocation of a poorly performing mature fig adjacent to the existing ‘Meeting Tree’ creating a gateway to the grandstand buildings.

The second axis runs from the Alison Road frontage in the east, past the Members Stand and proposed grandstand to the day stalls to the west of the site. The primary pedestrian axis is defined through robust, high quality paving and light poles with integrated banners and hanging baskets. Avenue plantings of evergreen tree species (*Magnolia grandiflora*) create year round shade whilst enforcing the traditional pedestrian boulevard.

THEATRE OF THE HORSE

The Theatre of the Horse provides a more intimate setting for visitors to experience the race horses award ceremony up close. Landscaping to this area includes brick paving to the periphery of the parade ring and seasonal planting of colourful annuals and perennials within removable planters attached to the balustrade of each of the viewing terraces. A central synthetic lawn area increases the sense of green within the Theatre of the Horse while minimising maintenance and water use.

FORMAL SPECTATOR LAWNS

The formal spectator lawns are located on the track side of the proposed Grandstand and Members Stand. The lawns space is separated into members and public areas by low fencing adjacent to the circular pedestrian access ramp. Both members and public areas consist of a paved portion towards the building frontages with lawn towards the track side. The landscape treatment is sympathetic to the heritage facade of the Members Stand, and provides an open setting to allow views of the building from surrounding areas and views of the track from within the stands.

Lawns in front of the public grandstand incorporate turf terraces with concrete steps providing access between each terrace. These terraces establish zones for the installation of tables and chairs with minimal obstruction to circulation paths. Concrete access ramps have also been included to ensure disabled access as well

as access maintenance vehicles and utes and vans during events.

Low hedge planting is proposed against track side fencing increasing the formal feel of the area. Seasonal and perennial planting used around the horse tunnel bring colour to the lawns and increase the sense of celebration.

EVENT LAWN AND TOTE BUILDING

A flexible lawn space is located between the Grandstand and the Tote Building. During race day events this lawn space is intended for temporary marques, food stalls and small carnival rides. During non races day events the space provides a green breakout space with possible use for markets and outdoor performances. The lawn is lined by evergreen trees on the western and southern edges and a large existing fig trees will be relocated into the lawn space within the south western corner of the lawn. A planting bed of shade tolerant species form a colourful understorey to this fig tree

A brick paved terrace is provided around the heritage Tote Building. This terrace offers flexible space for outdoor seating / dining in close proximity to the internal bar within the Tote Building. The landscape treatment is sympathetic to the heritage facade of the Tote Building with trees and screening plants kept away from the facade to maintain views of the building from surrounding areas.

FAMILY LAWN

An existing children’s playground is provided in the northern corner of the spectator precinct. This play space is situated within a shaded lawn surrounded by 3 large mature fig trees. The landscape master plan proposes no changes to this area

MEMBERS AREA

A small lawn and outdoor paved terrace is located at the rear of the Members Stand. This area is provided for use by members only as a quiet outdoor space away from the action of being track side. The space can accommodate small events and performances such as a jazz band for the entertainment of members. An existing Brushbox tree (*Lophostemon confertus*) is retained and incorporated within a linear planted buffer separating this members area from the general public zone beyond. A low fence is also provided to reinforce this point of security around the members area. During non race day events the area is accessible to the public in association with the TAB and bars which operate within the Members Stand.

ALISON ROAD ENTRY

The Alison Road frontage extends across the eastern boundary of the precinct. This frontage has recently been upgraded with works including new asphalt and cobble paving, shade structures around the heritage SWAB building, a new taxi way / carpark with street planting to Alison Road and new signage.

The landscape master plan aims to incorporate these recent works by extending the geometry established on this frontage within the site.

The proposed works include the addition of a grid of evergreen trees and a pergola structure with vine planting located on the western side of the heritage SWAB Building. These interventions soften the hard landscaping and establish a buffer from the busy and noisy traffic on Alison Road. The master plan provides a long term vision for the potential adaptive re-use of the Swab building, creating opportunities for activity to permeate the edges on non-race days, as well as encouraging a broader range of users to the site.

LEISURE GARDENS

A series of lush garden spaces are proposed along the northern boundary of the site against the existing boundary wall. These gardens are heavily planted with flowering hedges, perennial understorey and flowering annuals. Gravel access path provide circulation throughout the linear gardens with dedicated seats provided underneath timber pergola structures. Further shading is provided by evergreen and deciduous tree plantings providing year round colour. It is intended that these gardens form a picturesque backdrop for weddings and formal events that occur throughout the year within the spectator precinct.

LEGER LAWN

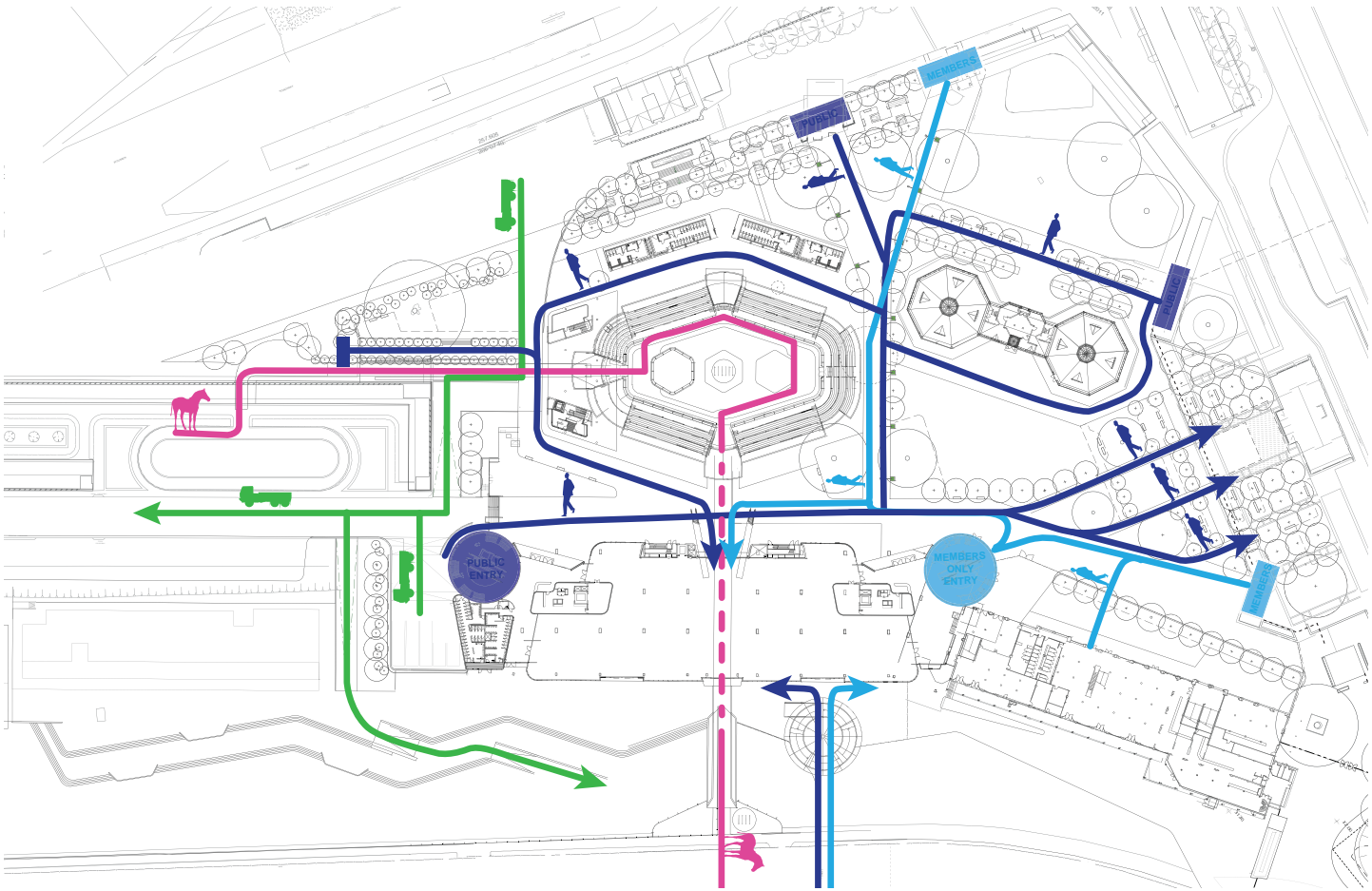
The leger Lawn is located west of the spectator lawns. The landscape master plan proposes to formalise this currently uneven turf and gravel area bringing it to a similar standard as the spectator lawns adjacent. A new paved platform at +RL 32.00 ties into the ground floor level of the grandstand buildings and provides a flat, hard surface for the erection of temporary marques during racing carnivals. A series of turf terraces step down across the lawn space towards the racetrack to the south. The terraces assist to minimise the gradient of the lawn adjacent to the track, providing a flatter space for temporary event structures such as stages and tents.

Ramped access to the paved platform is provided on it’s northern edge from the existing bitumen road adjacent to the day stall building. A loading zone is also provided on this edge for large trucks required for the setup of marques and event structures.

HERITAGE GARDENS

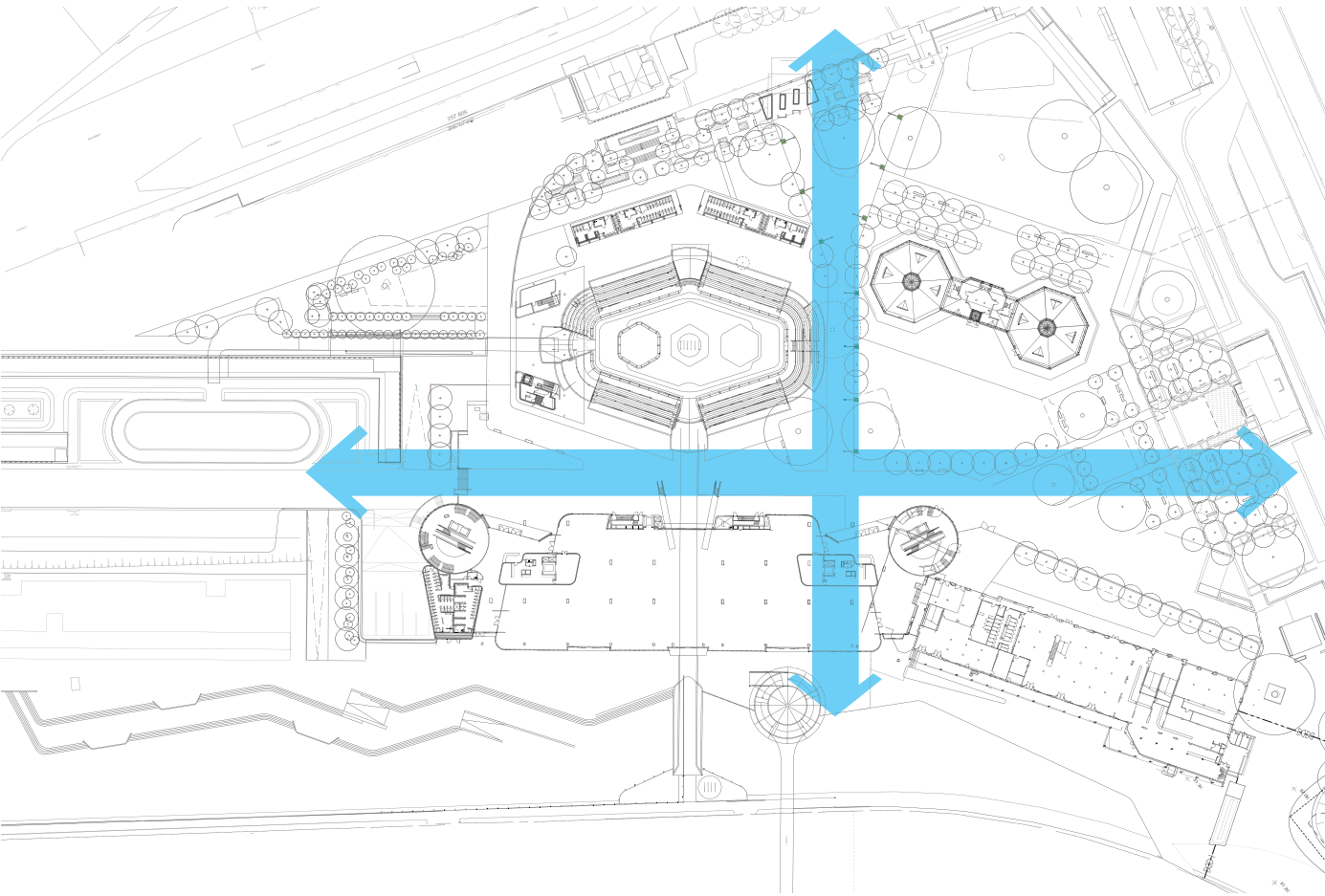
A series of decorative garden beds are situated west of the heritage SWAB building. These gardens offer a welcoming formal and picturesque setting located between the three retained heritage building which include the SWAB Building, Official Grandstand and Tote Building. Remnant decorative sandstone elements recovered from previous site works that commemorate significant events and periods within the racecourses history are to be displayed within the garden setting. Intimate garden rooms located within the Heritage Gardens provide formal seating opportunities surrounded by flowering plants and deciduous trees.

Access & Circulation

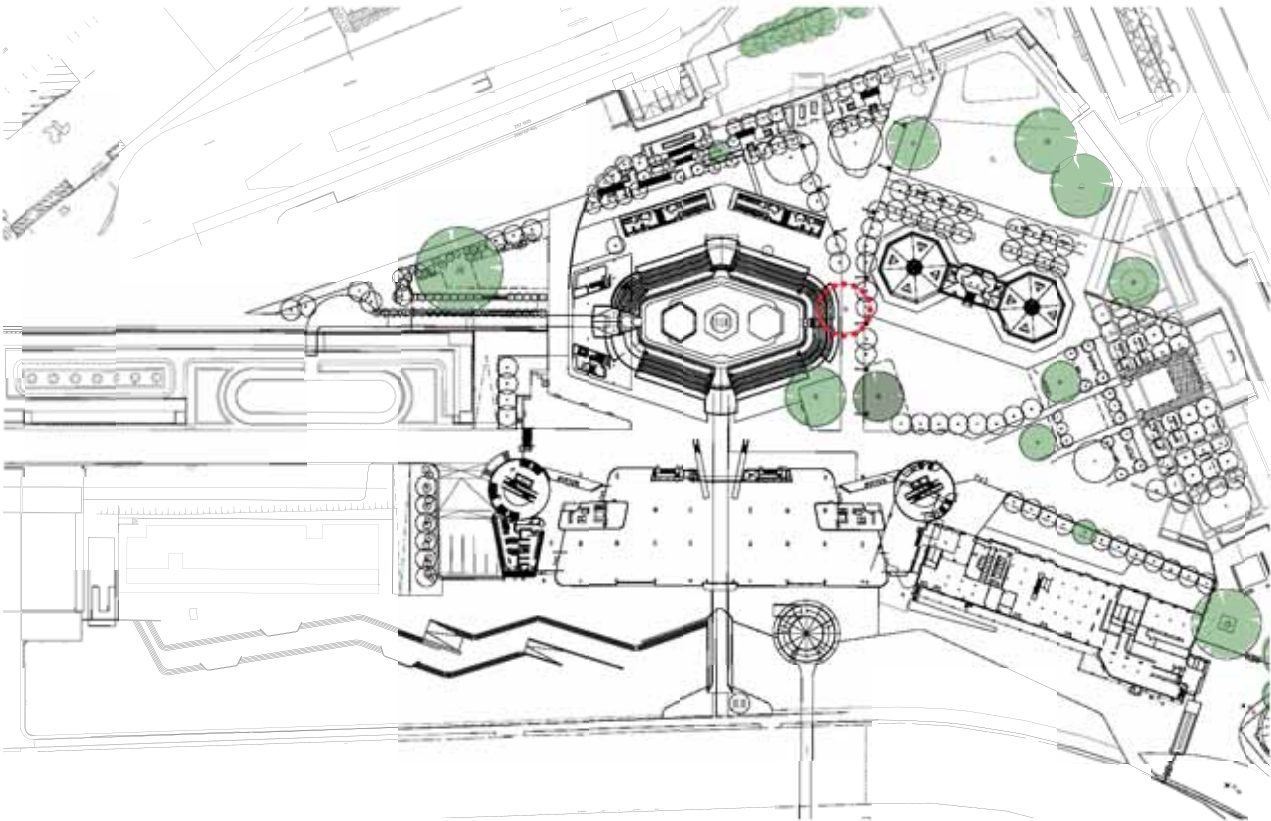


- Truck Access route
- Horse Access Route
- Public Access Route
- Member Access Route

Pedestrian Axis



Existing Trees



- Existing Trees
- Existing Trees - Relocated
- Current position of tree to be relocated

Proposed Trees



- Grove Tree - *Magnolia grandiflora*
- Feature Trees - *Ficus macrophylla*
- Flowering Tree - *Lagerstroemia indica*, *Tibouchina 'Alstonville'*
- Deciduous Tree - *Pyrus calleryana* 'Bradford'
- Screening Shrubs - Refer to Plant Palette

5.0 CHARACTER AND MATERIALS PALETTE



6.0 LANDSCAPE MASTER PLAN - STAGE 1

- 1

Alison Road drop off and taxi rank
- 2

Public entry
- 3

Members Entry
- 4

Family Lawn
- 5

Children's Playground
- 6

Pedestrian Axis
- 7

Public entry path with avenue of evergreen trees and bench seating
- 8

Leisure Gardens
- 9

Theatre of the Horse with brick paving to periphery
- 10

Amenities blocks
- 11

Existing lawn with additional understorey planting to periphery
- 12

General entry/exit from taxi stand
- 13

Horse tunnel from day stalls to
- 14

Asphalt vehicular access path
- 15

Asphalt vehicular / disabled access ramp
- 16

Low understorey planting within shallow planter
- 17

Access stairs
- 18

Loading dock to rear of Leger Lawn edged with understorey planting
- 19

Paved platform accommodating temporary marquee (shown indicatively)
- 20

Terraced Leger Lawn
- 21

Ramped vehicle and disabled access to Leger Lawn
- 22

Planted buffer to loading dock adjacent
- 23

Spectator Lawns
- 24

Paved / concrete circulation area adjacent to grandstand buildings
- 25

Ramped vehicular / disabled access to lower lawn
- 26

Horse tunnel from Theatre of the Horse to racetrack
- 27

Pedestrian ramp from racetrack carpark
- 28

Members area to rear of Officials Stand
- 29

Heritage Gardens with decorative planting, heritage sandstone elements and formal seating
- 30

Event Lawn
- 31

Brick paved terrace to periphery of heritage Tote Building
- 32

Existing tree retained & surrounding ground levels maintained.
- 33

Existing tree relocated
- 34

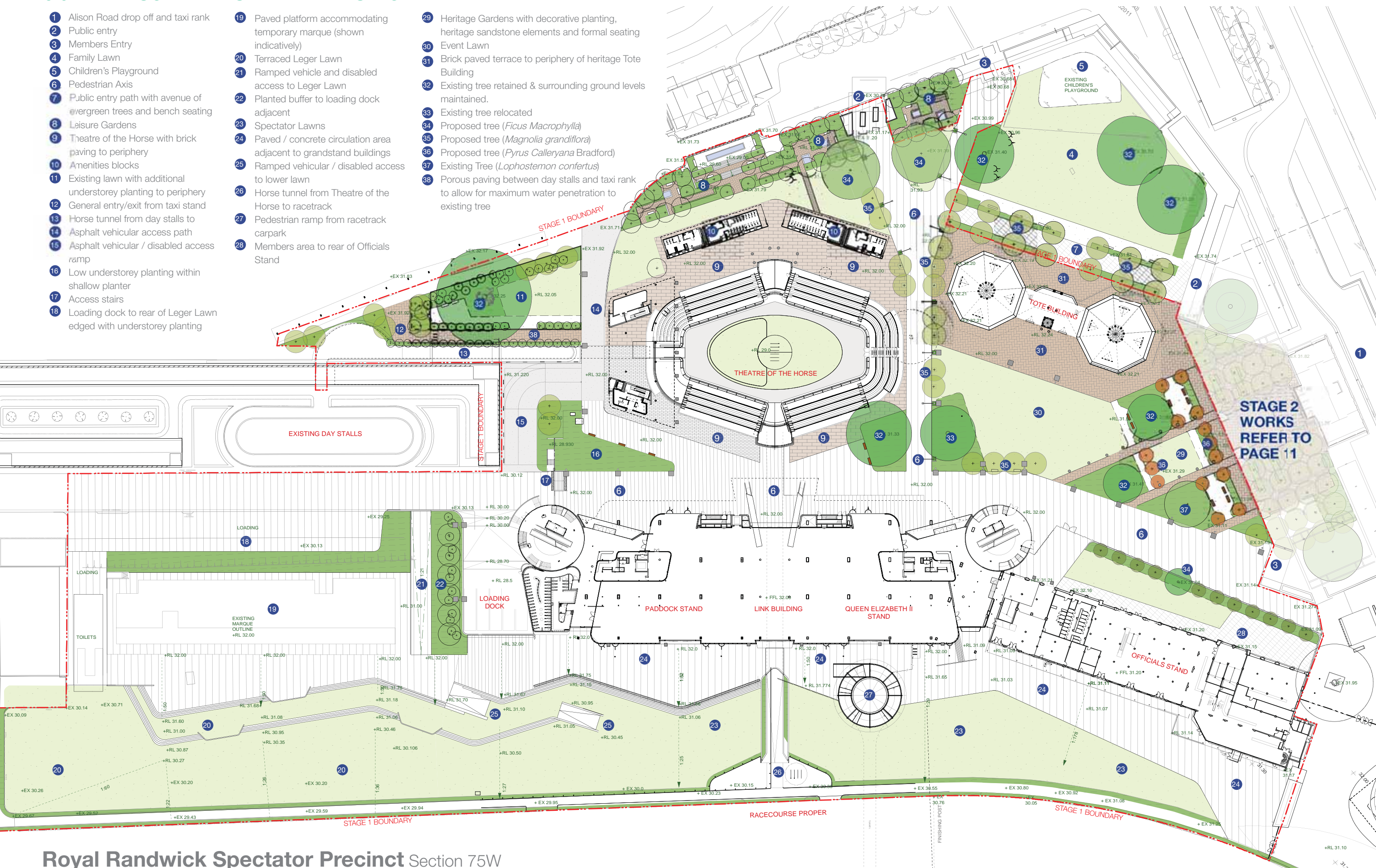
Proposed tree (*Ficus Macrophylla*)
- 35

Proposed tree (*Magnolia grandiflora*)
- 36

Proposed tree (*Pyrus Calleryana* Bradford)
- 37

Existing Tree (*Lophostemon confertus*)
- 38

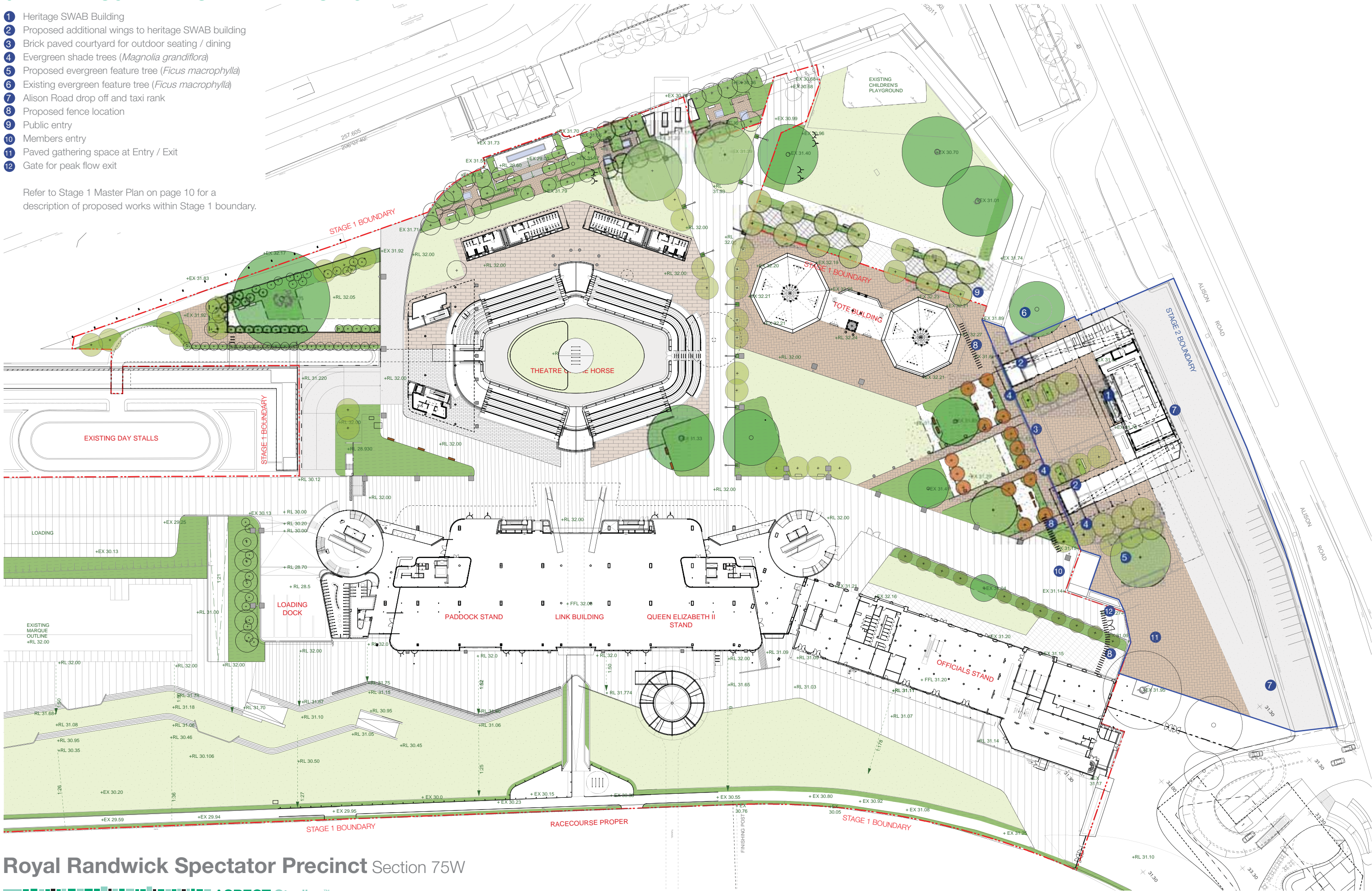
Porous paving between day stalls and taxi rank to allow for maximum water penetration to existing tree



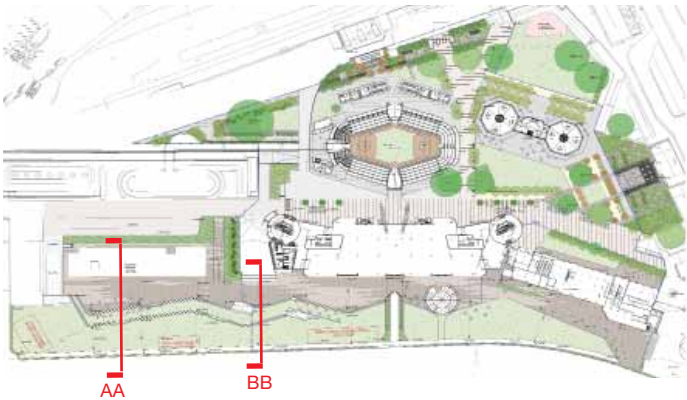
6.1 LANDSCAPE MASTER PLAN - STAGE 2

- 1 Heritage SWAB Building
- 2 Proposed additional wings to heritage SWAB building
- 3 Brick paved courtyard for outdoor seating / dining
- 4 Evergreen shade trees (*Magnolia grandiflora*)
- 5 Proposed evergreen feature tree (*Ficus macrophylla*)
- 6 Existing evergreen feature tree (*Ficus macrophylla*)
- 7 Alison Road drop off and taxi rank
- 8 Proposed fence location
- 9 Public entry
- 10 Members entry
- 11 Paved gathering space at Entry / Exit
- 12 Gate for peak flow exit

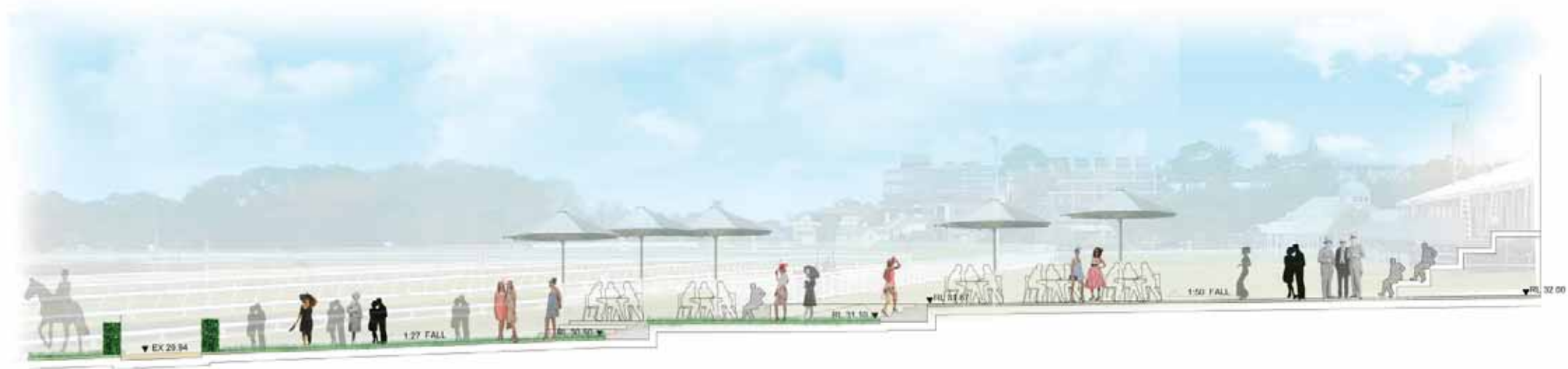
Refer to Stage 1 Master Plan on page 10 for a description of proposed works within Stage 1 boundary.



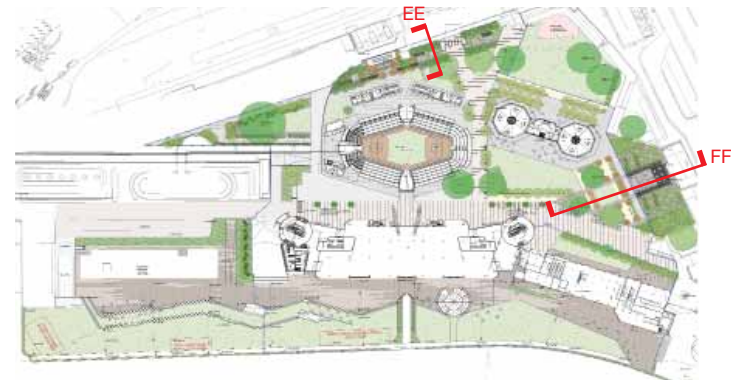
7.0 LANDSCAPE SECTIONS



Section AA - Leger Lawn



Section BB - Leger Lawn



Section EE - Leisure Gardens



Section FF - Swab Building Axis

Royal Randwick Spectator Precinct Section 75W

8.0 PLANTING PALETTE

Trees and Shrubs



Ficus macrophylla



Magnolia grandiflora



Pyrus calleryana 'Bradford'



Rhododendron azalea 'Encore'



Photinia glabra 'Rubra'



Camellia sasanqua



Michellia figo



Acmena smithii var. *minor*



Buxus microphylla var. *microphylla*



Murraya paniculata



Buxus japonica

Perennial Planting



Lavandula dentata



Echium fastuosum



Tulbaghia violacea



Echinacea purpurea



Hemerocallis x hybrida



Pennisetum secatum 'Rubrum'



Doryanthes palmeri



Canna x generalis



Dietes robinsoniana



Gardenia augusta 'Florida'



Arthropodium cirratum



Beschorneria yuccoides



Alternanthera dentata



Rose floribunda



Rosa 'Flower Carpet Red'



Pelargonium peltatum



Arctotis x hybrida



Convolvulus sabatius susp mauritanicus

Shade Tolerant Planting



Asparagus densiflorus 'Mys-ersii'



Acanthus mollis



Liriope muscari 'Just Right'



Bergenia schmidtii



Ajuga reptans 'Giant Catlin'



Hydrangea macrophylla



Anemone japonica



Helleborus x hybridus



Clivia Belgian hybrid



Fuschia thalia



Ophiopogon japonicus 'Nana'



Viola hederacea



Pratia pedunculata



Dichondra repens

Annuals



Salvia splendens



Begonia sempervirens



Solenostemon scutellarioides



Antirrhinum majus



Celosia cristata



Tagetes patula



Eschscholzia californica



Papaver nudicaule



Polyanthus hybrids



Viola hybrids



Petunia x hybrida



Salvia sp



Delphinium elatum



Digitalis purpurea

Plant Schedule

Botanical Name	Common Name	Mature Size		Botanical Name	Common Name	Mature Size
Tree				Shade Tolerant Plant		
<i>Ficus macrophylla</i>	Moreton Bay Fig	40m x 40m		<i>Acanthus mollis</i>	Oyster Plant	1 x 2m
<i>Magnolia grandiflora</i>	Bull Bay Magnolia	20m x 20m		<i>Ajuga reptans</i> ‘Giant Catlin’	Catlin’s Carpet Bugle	0.4 x 0.5m
<i>Pyrus calleryana</i> ‘Bresford’	‘Bresford’ Flowerin Pear	10m x 10m		<i>Anemone japonica</i>	Japanese anemone	1.5 x 1m
Hedge				<i>Asparagus densitlorus</i> ‘Myersli’	Foxtail fern	1.5 x 2m
<i>Acmena smithii</i> var <i>minor</i>	Dwarf Lily Pily	4 x 4m		<i>Bergenia schmidtii</i>	Bergenia	0.3 x 0.3m
<i>Buxus japonica</i>	Japanese Box	1 x 1m		<i>Clivea</i> Belgian hybrid	Clivea	0.5 x 0.5
<i>Buxus microphylla</i> var <i>microphylla</i>	Korean Box	1 x 1m		<i>Dichondra repens</i>	Kidney Weed	0.1 x 0.5
<i>Camellia sasanqua</i>	Sasanqua Camellia	3 x 2m		<i>Fuschia thalia</i>	Fuschsia	2 x 1.5m
<i>Michellia figp</i>	Port Wine magnolia	4 x 4m		<i>Helleborus</i> x <i>hybridus</i>	Helleborus	0.6 x 0.5
<i>Murraya paniculata</i>	Mock Orange	3 x 3m		<i>Hydrangea macrophylla</i>	Hydrangea	2 x 2m
<i>Photinia glabra</i> ‘Rubra’	‘Rubra’ Photinia	3 x 3m		<i>Liriope muscari</i> ‘Just Right’	Liriope	0.6 x 0.5
<i>Rhododendron azalea</i> ‘Encore’	‘Encore’ Azalea	2 x 2m		<i>Ophiopogon japonicus</i> ‘Nana’	Mondo Grass	0.1 x 0.1
Perennial				<i>Pratia pedunculata</i>	Matted Pratia	0.3 x 0.3m
<i>Alternanthera dentata</i>	Alternanthera	1 x 1m		<i>Viola hederacea</i>	Native Violet	0.3 x 0.3m
<i>Arthropodium cirratum</i>	Renga Renga Lily	1 x 1m		Annuals		
<i>Arctotis</i> x <i>hybrida</i>	African Daisy	0.3 x 2m		<i>Antirrhinum majus</i>	Snapdragons	
<i>Beschorneria yuccoides</i>	Mexican Lily	1.5 x 1m		<i>Begonia sempervirens</i>	Begonia	0.3 x 0.3m
<i>Canna</i> x <i>generalis</i>	Canna Lily	2 x 1m		<i>Celosia cristata</i>	Celosia	1 x 1m
<i>Convolvulus sabatius</i> susp <i>mauritanicus</i>	Ground Morning Glory	2 x 0.2m		<i>Delphinium elatum</i>	Alpine Delphinium	1 x 1m
<i>Dietes robinsoniana</i>	Wedding Lily	0.8 x 0.5m		<i>Digitalis purpurea</i>	Foxglove	1.2 x 0.6m
<i>Doryanthes palmeri</i>	Spear Lily	5 x 2m		<i>Eschscholzia californica</i>	Californian Poppy	0.2 x 0.3m
<i>Echinacea purpurea</i>	Cone Flower	0.5 x 0.5m		<i>Papaver nudiclaule</i>	Arctic Poppy	0.2 x 0.3m
<i>Echium fastuosum</i>	Pride of Maidera	2 x 2m		<i>Petunia</i> x <i>hybrida</i>	Petunia	0.3 x 0.3m
<i>Gardenia augusta</i> ‘Florida’	‘Florida’ Gardenia	1.5 x 1.5m		<i>Polyanthus hybrids</i>	Polyanthus	0.2 x 0.3m
<i>Memerocallis</i> x <i>hybrida</i>	Day Lily	1 x 1m		<i>Salvia splendens</i>	Salvia	0.2 x 0.2m
<i>Lavendula dentata</i>	French Lavender	1 x 1m		<i>Solenostemon scutellarioides</i>	Painted Nettle	0.5 x 0.4m
<i>Pelagornium peltatum</i>	Geranium	1 x 1m		<i>Tagetes patula</i>	French Marigold	0.4 x 0.3m
<i>Pennisetum setaceum</i> ‘Rubrum’	‘Rubrum’ Fountain Grass	2 x 2m		<i>Viola hybrids</i>	Pansy	0.2 x 0.3m
<i>Rosa floribunda</i>	Floribunda Rose	2 x 2m				
<i>Rosa</i> ‘Flower Carpet Red’	Red Carpet Rose	0.5 x 2m				
<i>Pelargonium crispum</i>	Lemon-scented Geranium	0.7 x 1m				