

A1

Notes:-

Location of structures approximate only.

The levels and details on this plan have been determined by stadia methods and are within the general accepted accuracies for such surveys. All set out levels must be referred to the bench mark.

Bearings and Distances are by deed only and are subject to Final Survey. Except where shown by dimension, the relationship of improvements to boundaries is diagrammatic only. The true positions are subject to Final Survey.

Tree sizes are estimates and indicative only.

Services and utilities shown have been located by physical evidence and/or by reference to service plans from the relevant authorities. Pits may not have been opened to verify the type of utility. Excavation has not been carried out to confirm underground location. Service details should be confirmed with the relevant service authority during design and prior to commencement of construction.

As part of your duty of care, please contact the following where necessary:-

AGL Gas Company Ph. 131245
Dial Before You Dig Ph. 1100
Energy Australia Ph. 131535
Integral Energy Ph. 131081
Optus Communications Ph. 1800 505 777
Sydney Water Ph. 132092
Telstra Corporation Ph. 132203

This plan has been prepared for the exclusive use of the principal as listed in the title block.

Any construction on or near the boundaries will require further survey so that marks defining boundaries can be placed.

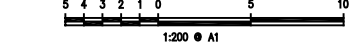
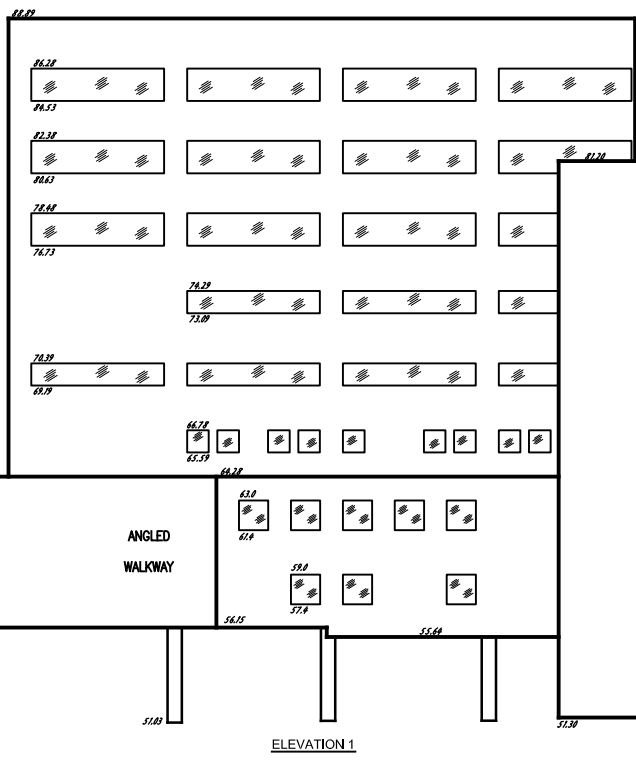
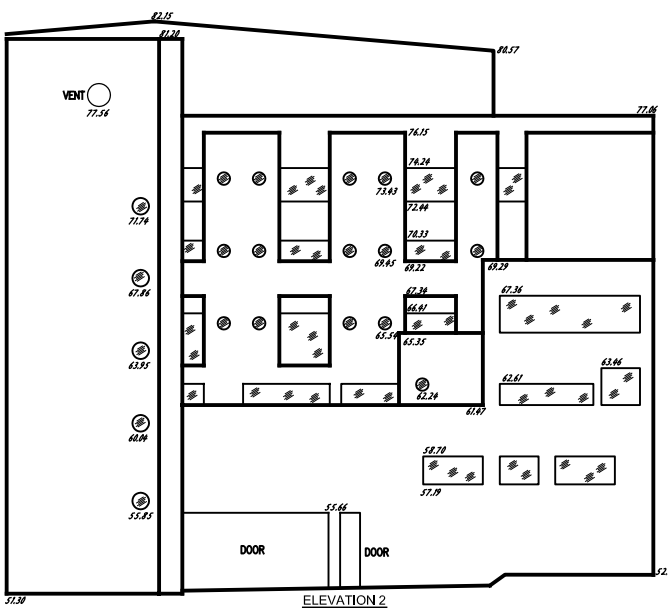
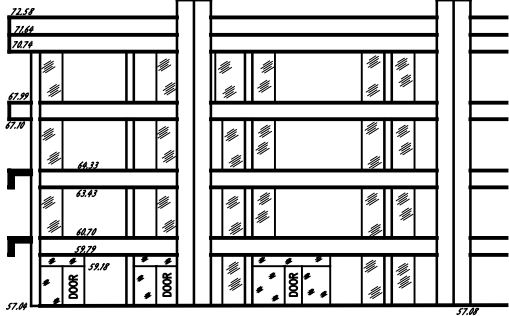
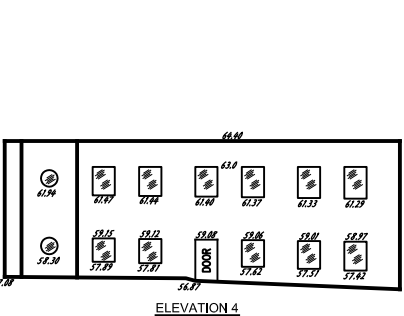
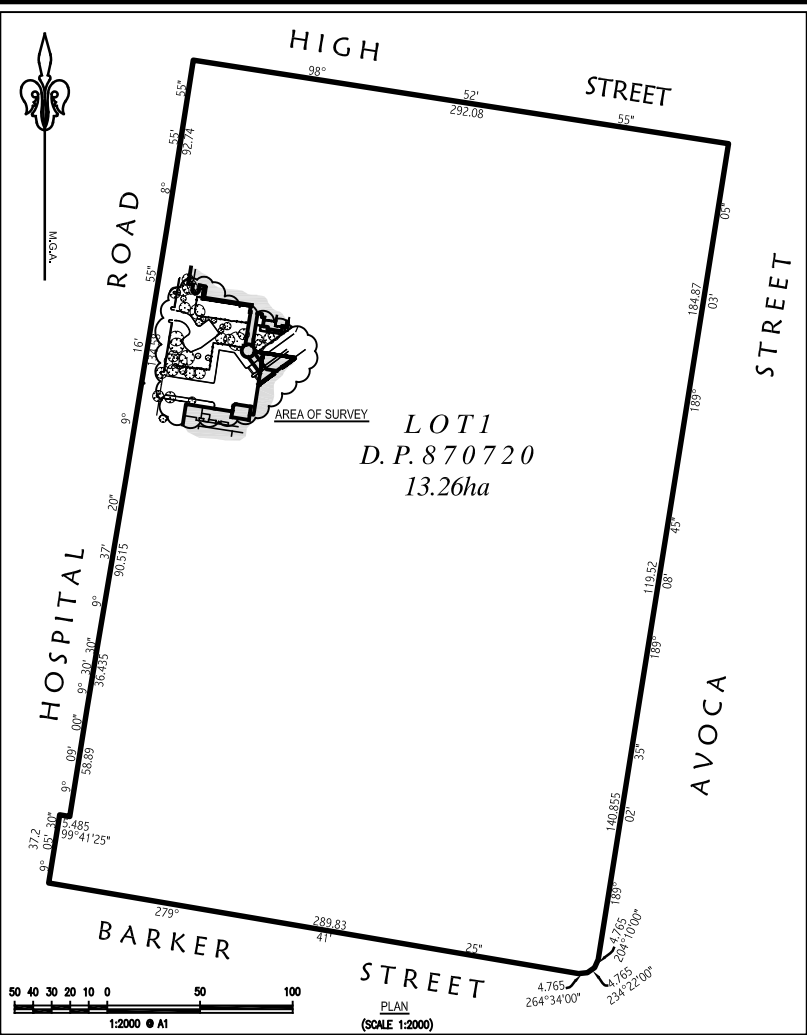
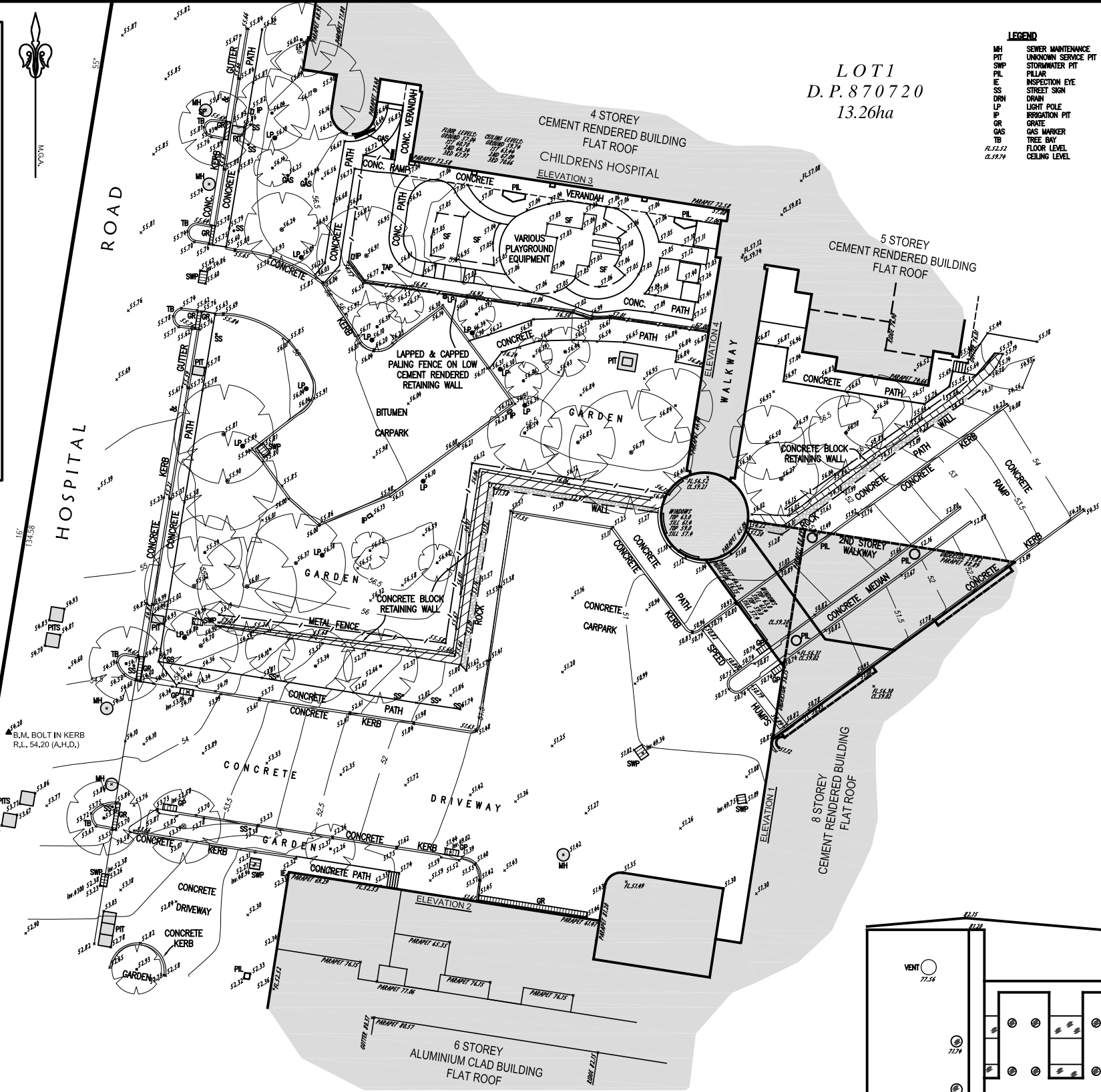
All set out levels must be referred to the bench mark.

© Copyright Craig & Rhodes Pty. Ltd., 2010.

No part of this survey may be reproduced, stored in a retrieval system or transmitted in any form without the express permission of the copyright owner except as permitted under the Copyright Act 1968.

Any permitted downloading, electronic storage, display, print, copy or reproduction of this survey should contain no alteration or addition to the original.

These notes must not be erased.



	AMENDMENTS			Project DETAIL SURVEY OVER PART LOT 1, D.P.870720 SYDNEY CHILDRENS HOSPITAL, AVOCA STREET, RANDWICK.	Principal HEALTH INFRASTRUCTURE			 SURVEYORS PLANNERS CIVIL & STRUCTURAL ENGINEERS INCORPORATING JOHN G. NELSON & ASSOCIATES AND COMPLETE CONSULTANTS	ABN 77 050 208 981 Level 4, Suite 400 16-18 Cambridge St EPPING NSW 2121 PO Box 233 EPPING NSW 1710	ACN 050 208 981 DX 4408 EPPING Tel. 9068-1855 Fax. 9068-2341 reception@crhodes.com.au www.craigandrhodes.com.au	 Approved Company	Directory	Dwg. File
	No.	Date	Description		Scale 1:200	Date 20.05.10	Council Ref.					Z:\096-10	09610T1 [00]
					Datum A.H.D.	L.G.A. RANDWICK						Sheet No. 1	Our Ref.
					Surveyed T.G.	Drawn B.R.M.	Checked D.S.					of 1 Sheets	096-10