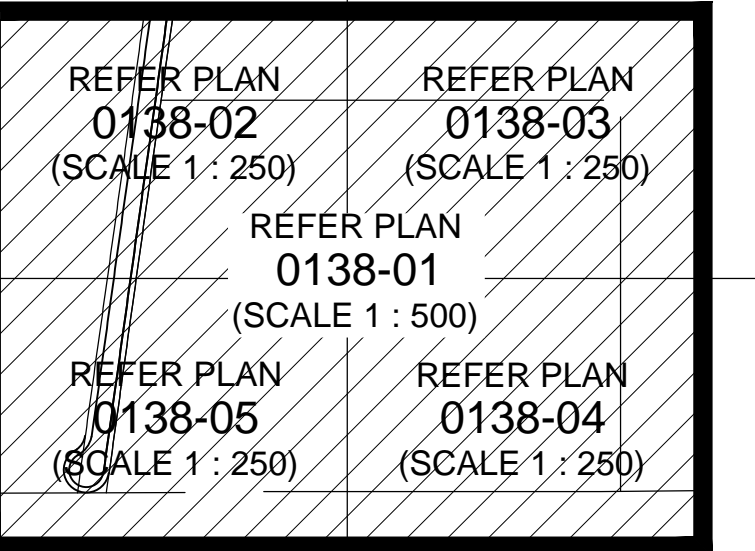
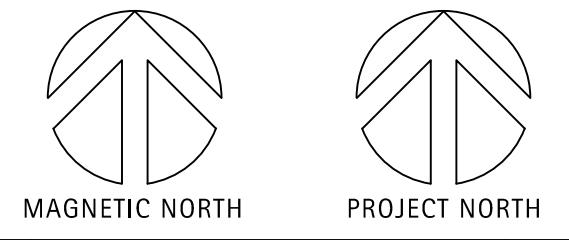
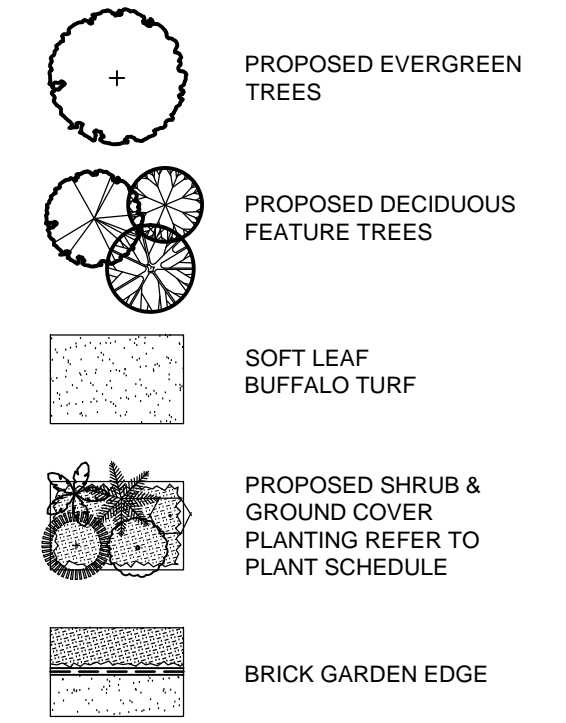


NOTE:
PLANTS ARE LIVING ORGANISMS. IF THEY ARE MAINTAINED IN A HEALTHY CONDITION THEY SHALL CONTINUE TO GROW. IF THEY THEREFORE BE NECESSARY TO REGULARLY MONITOR THE GROWTH OF THE PLANTS SO THAT THEY CAN BE PRUNED OR OTHERWISE ATTENDED TO SO THAT THEY DO NOT OUTGROW THEIR ALLOTTED SPACE.
EXACT LOCATION OF SITE BOUNDARIES ARE TO BE CONFIRMED ON SITE PRIOR TO COMMENCEMENT OF WORK.
WRITTEN DIMENSIONS SHALL TAKE PRECEDENCE OVER SCALED MEASUREMENTS. ALL DIMENSIONS AND LEVELS SHALL BE VERIFIED BY CONTRACTOR ON SITE. CONTRACTOR SHALL OBTAIN LANDSCAPE ARCHITECT'S WRITTEN APPROVAL OF INITIAL SETOUT PRIOR TO COMMENCEMENT OF WORK. IF IN DOUBT, CONTACT LANDSCAPE ARCHITECT.
ANY BATTER GREATER THAN 1 IN 3 SHALL BE STABILISED BY APPROVED GEOTEXTILE OR OTHER EROSION CONTROL MEASURE, TO SATISFACTION OF LANDSCAPE ARCHITECT.
FINAL PLANT SIZES MAY BE ADJUSTED AS NECESSARY TO SUIT AVAILABILITY OF PLANT SPECIES AT TIME OF IMPLEMENTATION AND FINAL PROJECT BUDGET.
SHOULD INCORPORATE TREE LOCATION HAVE THE POTENTIAL TO INTERFERE WITH EXISTING OR PROPOSED UTILITIES. CONTRACTOR SHALL ADVISE LANDSCAPE ARCHITECT AND OBTAIN INSTRUCTIONS PRIOR TO PROCEEDING.

SHEET LAYOUT



LEGEND



ISSUE	DESCRIPTION	DATE
C	FINALISED DEVELOPMENT APPLICATION	21/06/10
B	DEVELOPMENT APPLICATION	15/06/10
A	FOR REVIEW AND DISCUSSION	10/06/10

Peter Glass & Associates
Landscape Architects
Environmental Planners
Pool Designers
69 Christie Street, St Leonards NSW 2065
Phone (02) 9906 2727 Fax (02) 9906 4470
Email: design@peterglass.com.au
Web: www.peterglass.com.au

AUSTRALAND
COMMERCIAL & INDUSTRIAL DIVISION
LEVEL 3, 1C, HOMEBUSH BAY DRIVE, PHONE: (02) 9767 2000
RHODES, NSW 2138 FAX: (02) 9767 2933
LOCKED BAG 2106
NORTH RIDE N.S.W. 21670

PROJECT
PROPOSED WAREHOUSE FACILITY
FOR K-MART WAREHOUSE AT
STAGE 3 EASTERN CREEK
INDUSTRIAL PARK

DRAWING TITLE LANDSCAPE MASTER PLAN	
SCALE 1:500 @ B1	
DESIGNED/DRAWN PLJAH	
CHECKED PL	
DATE 07/06/2010	
JOB NUMBER 0138	
DRAWING NUMBER 0138-01	ISSUE C