

© 2010 Site Image (NSW) Pty Ltd. ABN 44 801 262 380 All rights reserved. This drawing is copyright and shall not be reproduced or copied in any form or by any means (graphic, electronic or mechanical including photocopy) without the written permission of Site Image Pty Ltd. Any license, expressed or implied, to use this document for any purpose what so ever restricted to the terms of the written agreement between Site Image (NSW) Pty Ltd and the instructing party.

This plan has been prepared to indicate the general scope and intent to provide a comprehensive pathway network across the site, that suitably provides access from the core functional areas of the hospital to a broadly distributed range of passive and active amenity open spaces. The philosophy of the Sydney Adventist Hospital espouses that health care should be aligned with general well-being through exercise and experience of nature, and the outdoors.

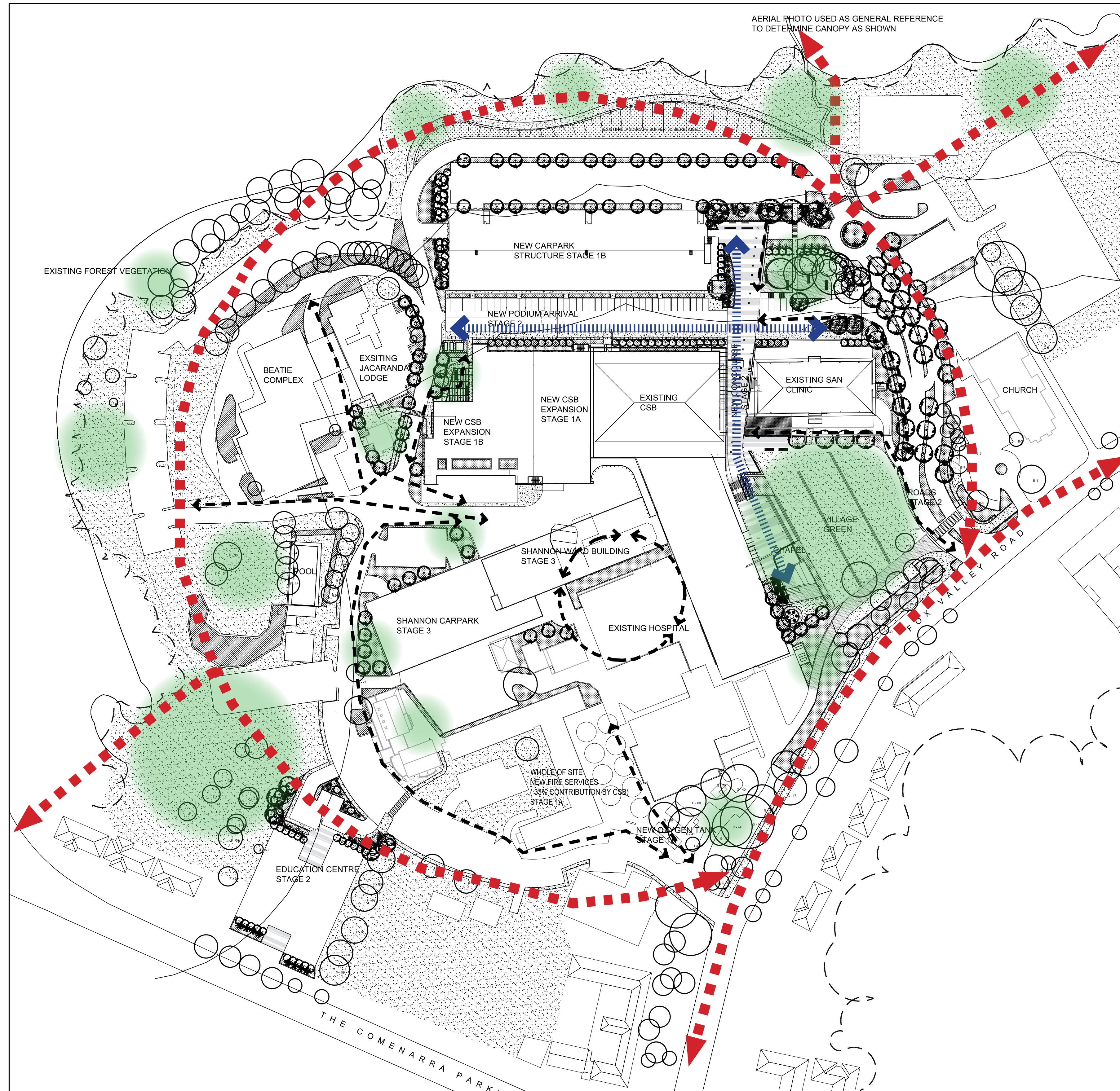
The array of open space and recreational amenity opportunities identified on the plan includes:

- Open lawn areas and courtyards suitable for general recreation and relaxation;
- Potential for playground and or exercise areas or circuits associated with a loop or link walkway; - Potential for smaller break-out spaces and courtyard areas where seating, paving, planting and the like can create a place for respite;
- Formal courtyard areas, terraces associated with eating or formal seating, and formal lawn and stair areas suitable for seating and a range of informal as well as organised activities and / or events;
- Sensory garden areas and interpretive herb and agricultural / orchard type spaces that reflect upon the heritage of the Adventist Hospital and specifically upon the history of this site as a Sanitarium. This includes the provision of interpretive signage and potentially sculptural or art elements.

The indication of pathways is indicative given the need to develop beyond the detailed masterplan stage for some areas of the site, but the intention is to provide:








- Suitable number of accessible areas for patients and visitors with limited mobility;
- Suitable provision of linkage to external transport links, including present and likely future links given The Wahrenonga Estate Masterplan;
- Provision for shareway routes that provide access to the site for cyclists, and access across the site where appropriate to assist regional linkages where logical and reasonable;

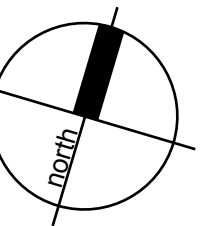
In terms of sustainable transport strategy, development of the landscape, architectural and site planning proposals are being assisted by GTA Consultants. Please refer to their accompanying report assessing opportunities that are provided for by the plan, and further opportunities that they identify for sustainable transport initiatives.



Part 3A Application Landscape Amenity and Access Strategy
Scale 1:1000 @ A1

[illegible]

- 

 WAHROONGA ESTATE/
EXTERNAL LINKAGES
- 
 PRIMARY LINKAGES
- 


 SECONDARY LINKAGES
- 
 EXISTING/PROPOSED
POTENTIAL OPEN SPACE
AMENITY



Client: **SYDNEY ADVENTIST HOSPITAL**

Project:
SYDNEY ADVENTIST HOSPITAL
185 FOX VALLEY ROAD
WAHROONGA NSW

SITE IMAGE

28 Bowden Street
Alexandria NSW 2015
Australia

T +61 2 9698 2899
F +61 2 9698 2877
W www.siteimage.com.au

Site Image Pty Ltd
ABN 19 076 561 067



Landscape Architects

PART 3A APPLICATION

Drawing Name:

LANDSCAPE AMENITY
AND ACCESS STRATEGY

Scale: 1:1000 @ A1

Date: 12.07.2010

Drawn:	DB	Approved:	RS
--------	----	-----------	----

Job Number:	Drawing Number:	Issue:
-------------	-----------------	--------

SS09-1859	004	A
-----------	-----	---