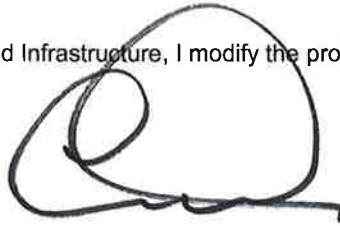


# Notice of Modification

## Section 75W of the *Environmental Planning and Assessment Act 1979*

As delegate of the Minister for Planning and Infrastructure, I modify the project approval referred to in Schedule 1, as set out in Schedule 2.



Chris Wilson  
Executive Director  
Development Assessment Systems and Approvals

Sydney

24 October

2013

### SCHEDULE 1

The project approval (MP 10\_0054) for the Big Island Mining Pty Ltd, granted by the Land & Environment Court of New South Wales on 8 February 2012.

### SCHEDULE 2

1. In the list of definitions in schedule 1:

- (a) Replace the current definitions for 'EA' with the following:

Environmental assessment titled *Environmental Assessment for the Dargues Reef Gold Project*, and *Specialist Consultant Studies Compendium Volume 1 and 2*, dated September 2010, prepared by R. W. Corkery and Co Pty Limited, including the Response to Submissions, and additional information from Gaia Research Pty Ltd dated 5 May 2011; Environmental Assessment titled *Environmental Assessment for the Dargues Reef Gold Project, Modification 1*, dated April 2012, prepared by R. W. Corkery and Co Pty Limited, including the Response to Submissions; Environmental Assessment titled *Environmental Assessment for the Dargues Gold Mine, Modification 2*, dated July 2013, prepared by R.W. Corkery and Co Pty Limited, including the Response to Submissions.

- (b) Delete the definition for mine water.

- (c) Insert the following new definitions:

Clean water	Water that accumulates from areas of the site that have not been disturbed under this project approval.
Mine-related infrastructure	Comprises the processing plant and permanent built infrastructure, not including site earthworks or installation of temporary offices or structures ancillary to those earthworks.

2. In condition 2 of schedule 2, insert 'generally' after 'The Proponent shall carry out the project'.
3. In condition 25 of schedule 3, replace the 'all other groundwater storage and treatment dams' with 'the Mine Water Settlement Dam and Tailings Storage Facility Seepage Collection Pond'.
4. In Appendix 2, replace all the existing figures with the attached figures.
5. In Appendix 4, replace the existing figure with the attached figure.
6. In Appendix 5, insert the following to commitment 5.1 after 'ensure that':  
' , with the exception of the Return Air Rise, Fresh Air Rise and associated infrastructure,'

7. In Appendix 5, commitment 5.9b, replace:

- a) 'Appendix '8 with 'Appendix 4' in the first dot point; and
- b) 'Appendices 4 and 8' with 'Appendix 4' in the second dot point.

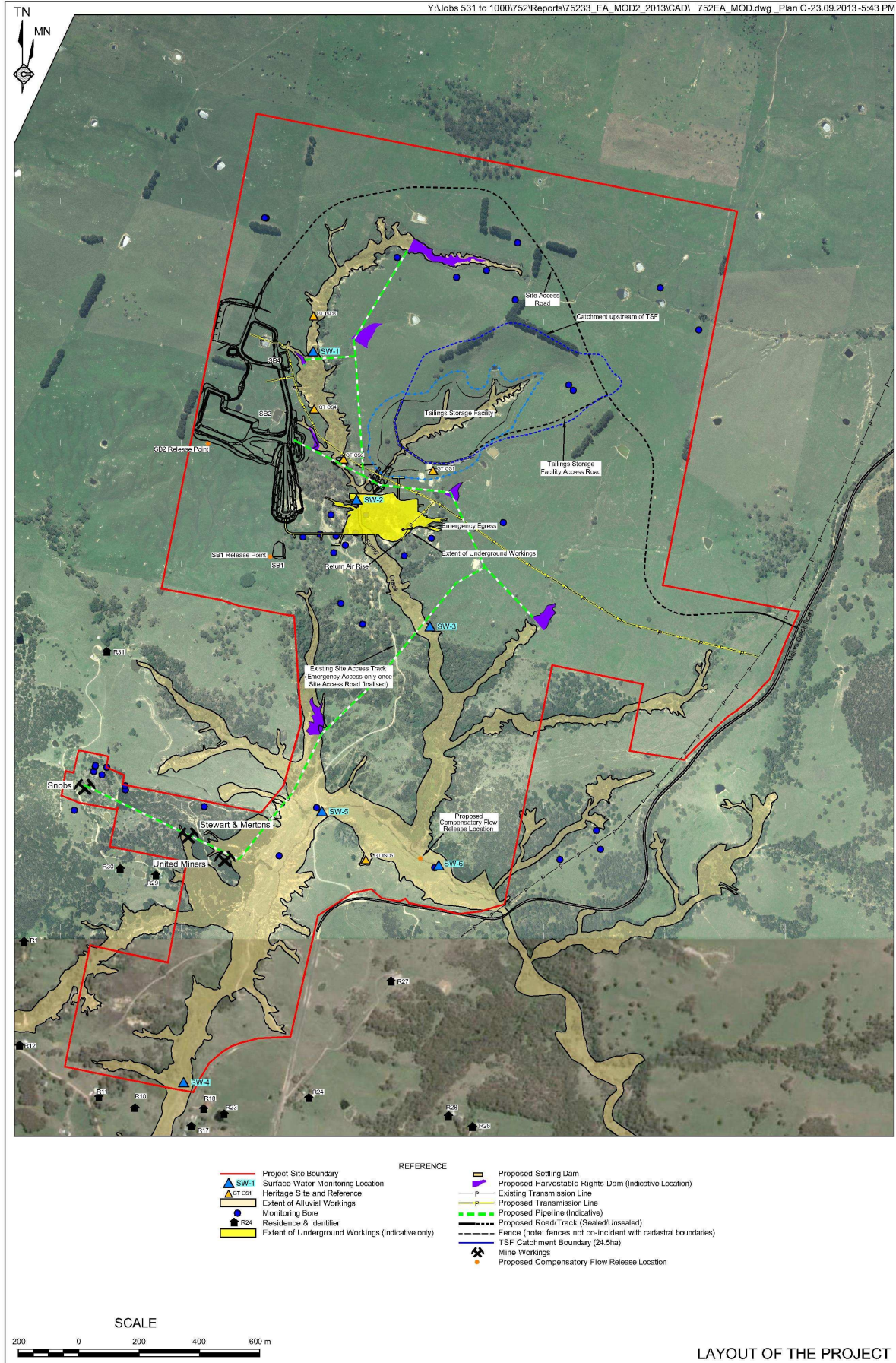
8. In Appendix 5, insert the following row in numerical order:

Maintenance and improvement of the biodiversity value of the Project Site and surrounding areas.	5.13 Ensure that all in-ground infrastructure in the vicinity of living native trees that comprise a component of the Ribbon Gum Forest of Fragmented Ribbon Gum Forest are installed in accordance with AS4970-2009 – Protection of Trees on Development Sites. In particular, ensure that such infrastructure is installed outside any Tree Protection Zone established by the standard.	During construction of in-ground infrastructure
--	--	---

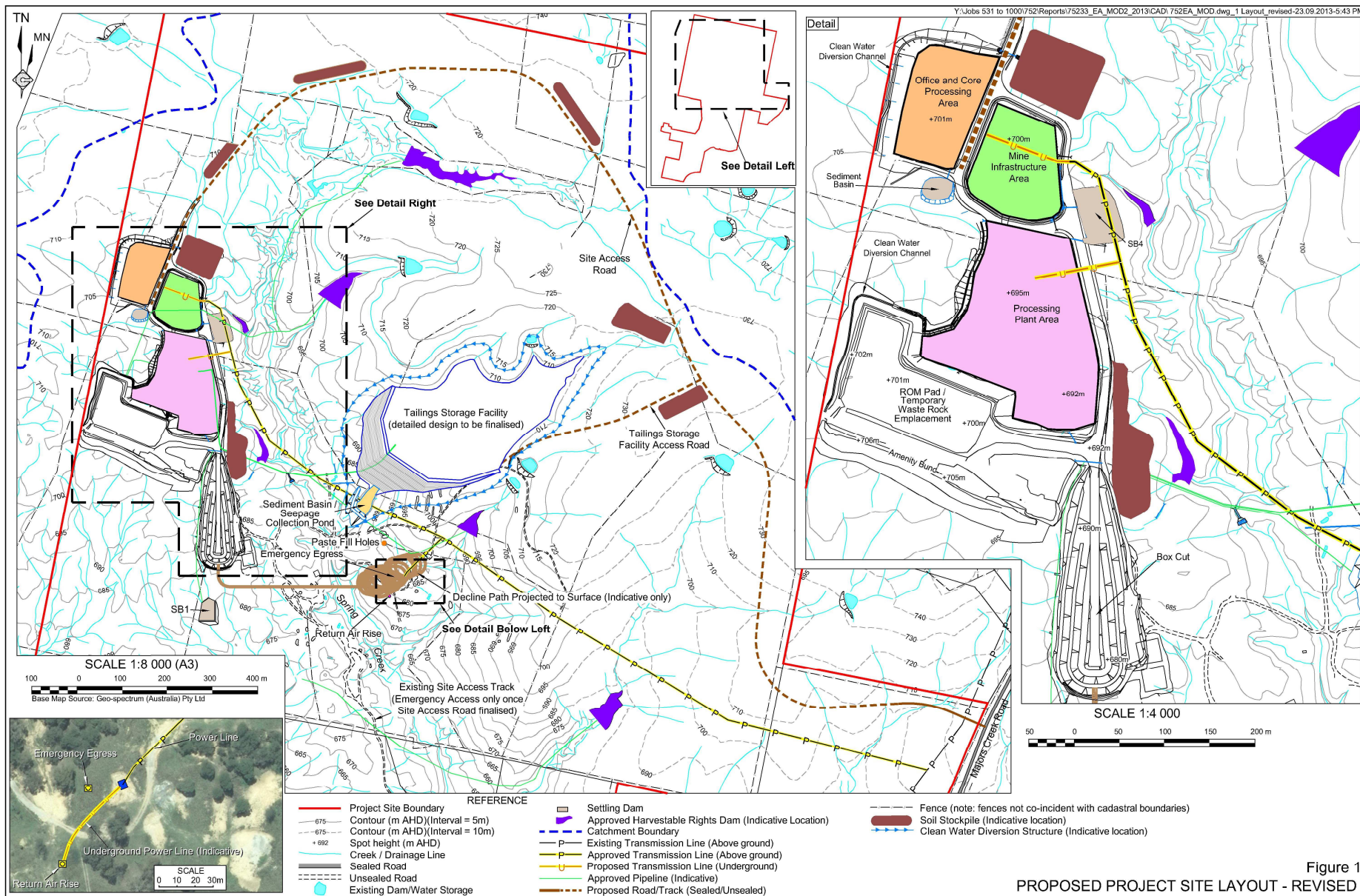
9. Delete Appendix 8.

## APPENDIX 2 PROJECT LAYOUT PLANS

Y:\Jobs 531 to 1000\752\Reports\75233 EA\_MOD2\_2013\CAD\ 752EA\_MOD.dwg Plan C-23.09.2013-5:43 PM





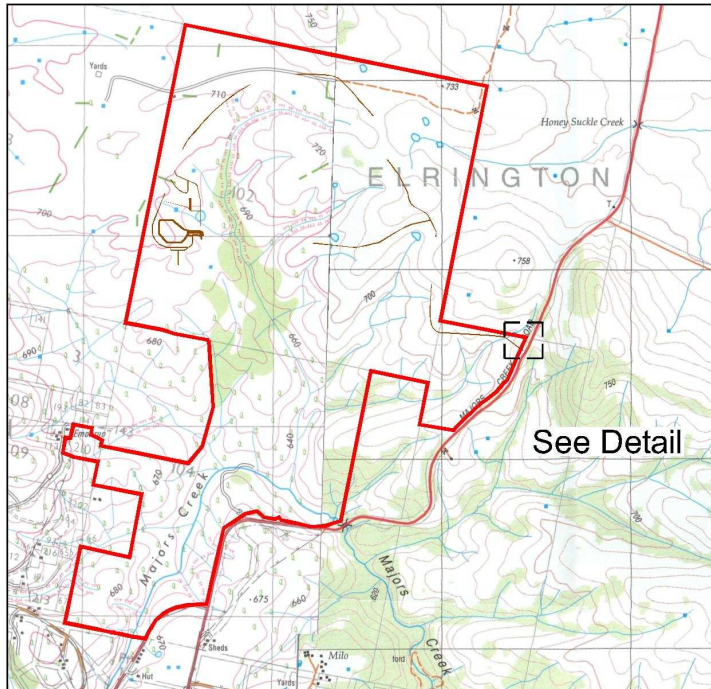






#### NOTES

1. DESIGN BASED ON RTA ROAD DESIGN GUIDE. BAR AND BAL RIGHT AND LEFT TURN TREATMENT.
2. MINOR PAVEMENT WIDENING IN MAJORS CREEK ROAD.
3. LEFT TURN RADIUS TO SUIT 19m ARTICULATED VEHICLE.



BOUNDARY OF PROJECT SITE

SEALED PAVEMENT FOR 200 METRES

PROPOSED ACCESS ROAD

Project Site Boundary

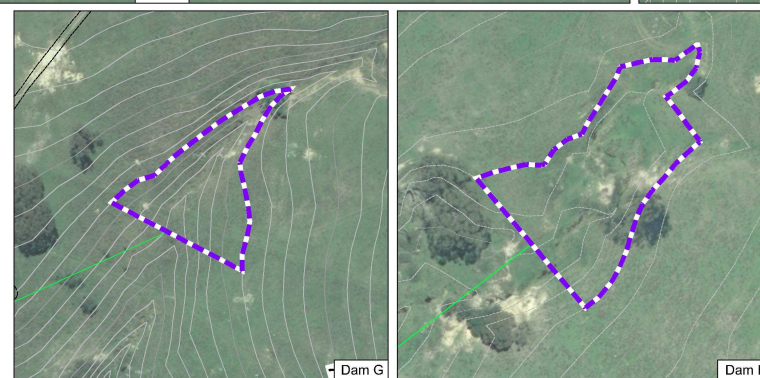
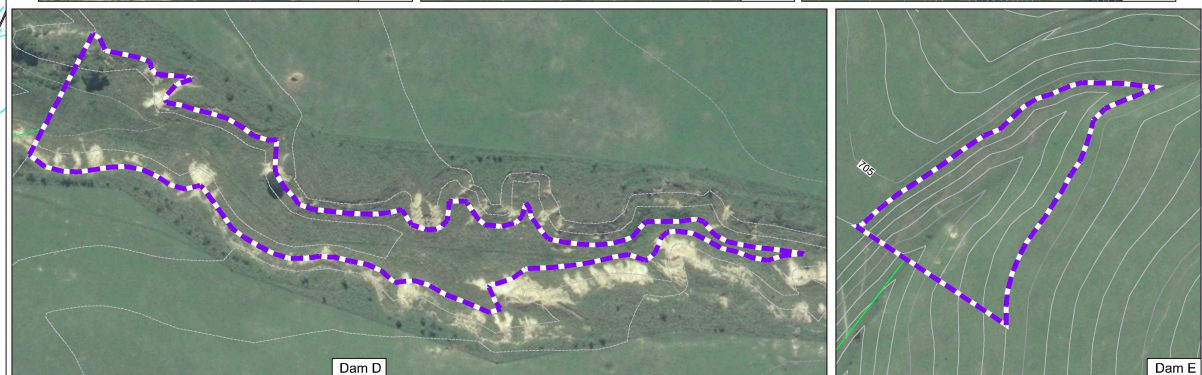
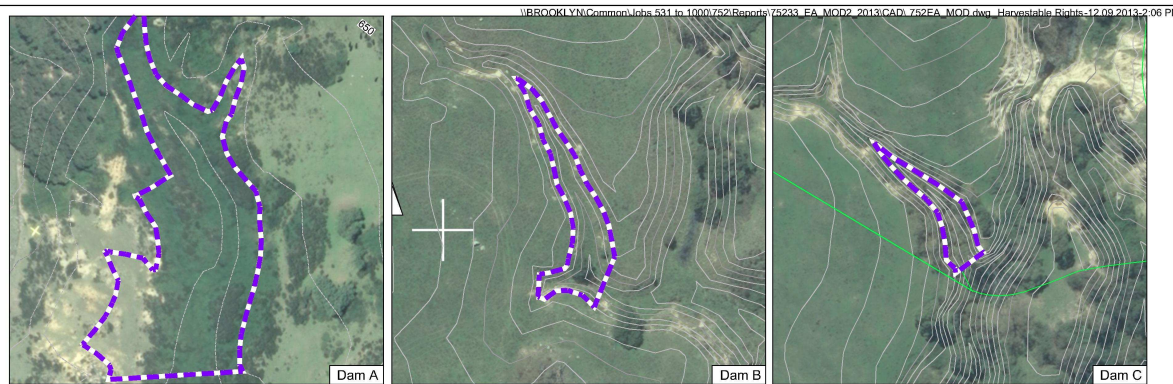
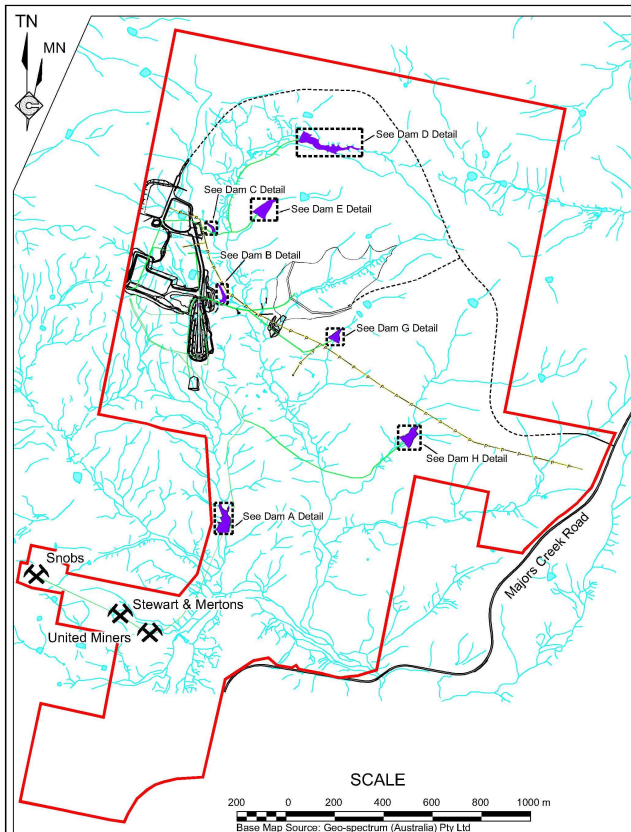
See Detail

STOP SIGN

SEALED SHOULDER

NOT TO SCALE

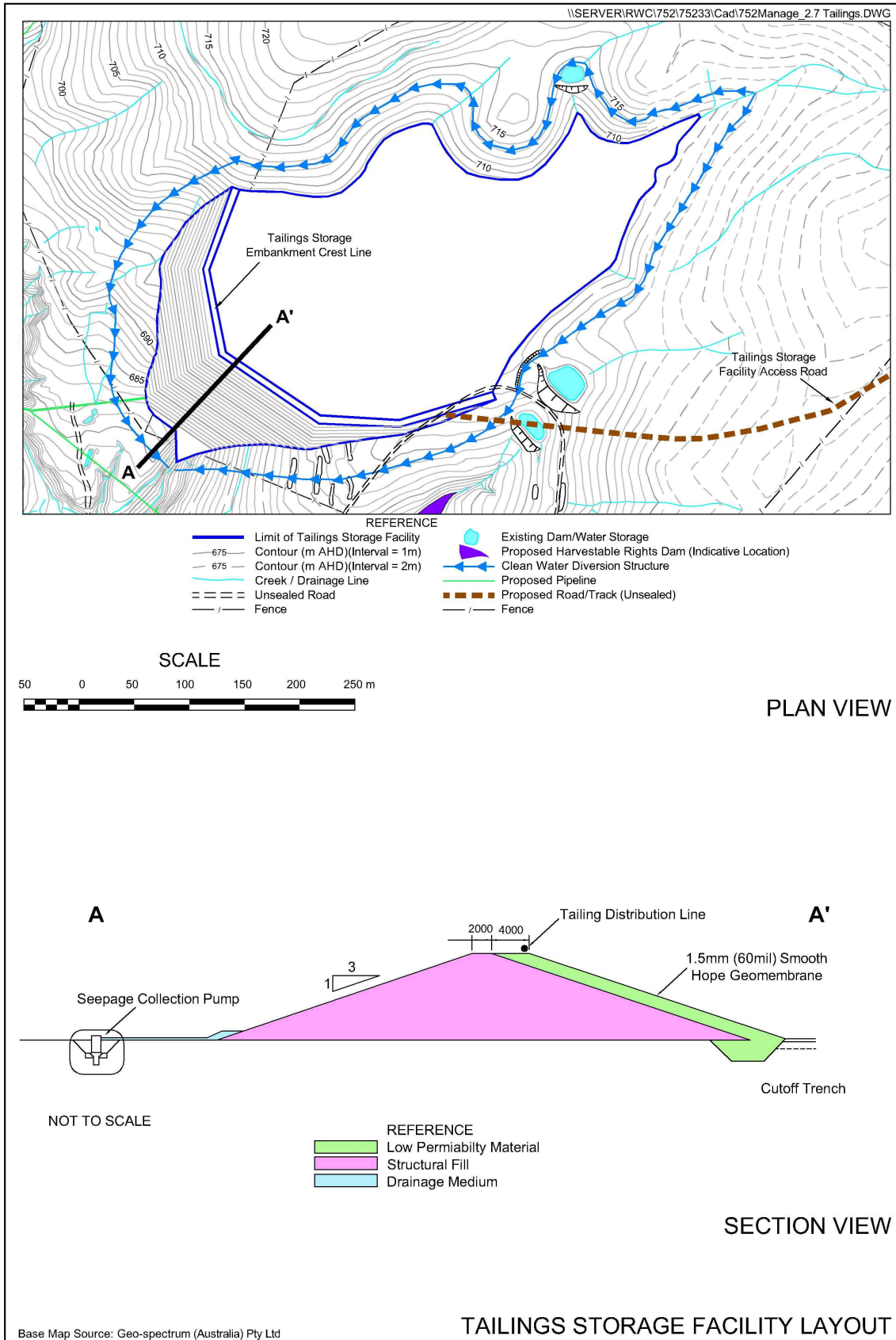
INDICATIVE SITE ACCESS ROAD INTERSECTION



**Note:** Dam F has been removed

**INDICATIVE LAYOUT OF THE PROPOSED  
HARVESTABLE RIGHTS DAMS  
23 September 2013**







# APPENDIX 4 BIODIVERSITY OFFSET STRATEGY

\\BROOKLYN\Common\Jobs 531 to 1000\752\Reports\75233\_EA\_MOD2\_2013\CAD\ 752EA\_MOD.dwg\_11 Vegetation Layout-12.09.2013-2:06 PM

