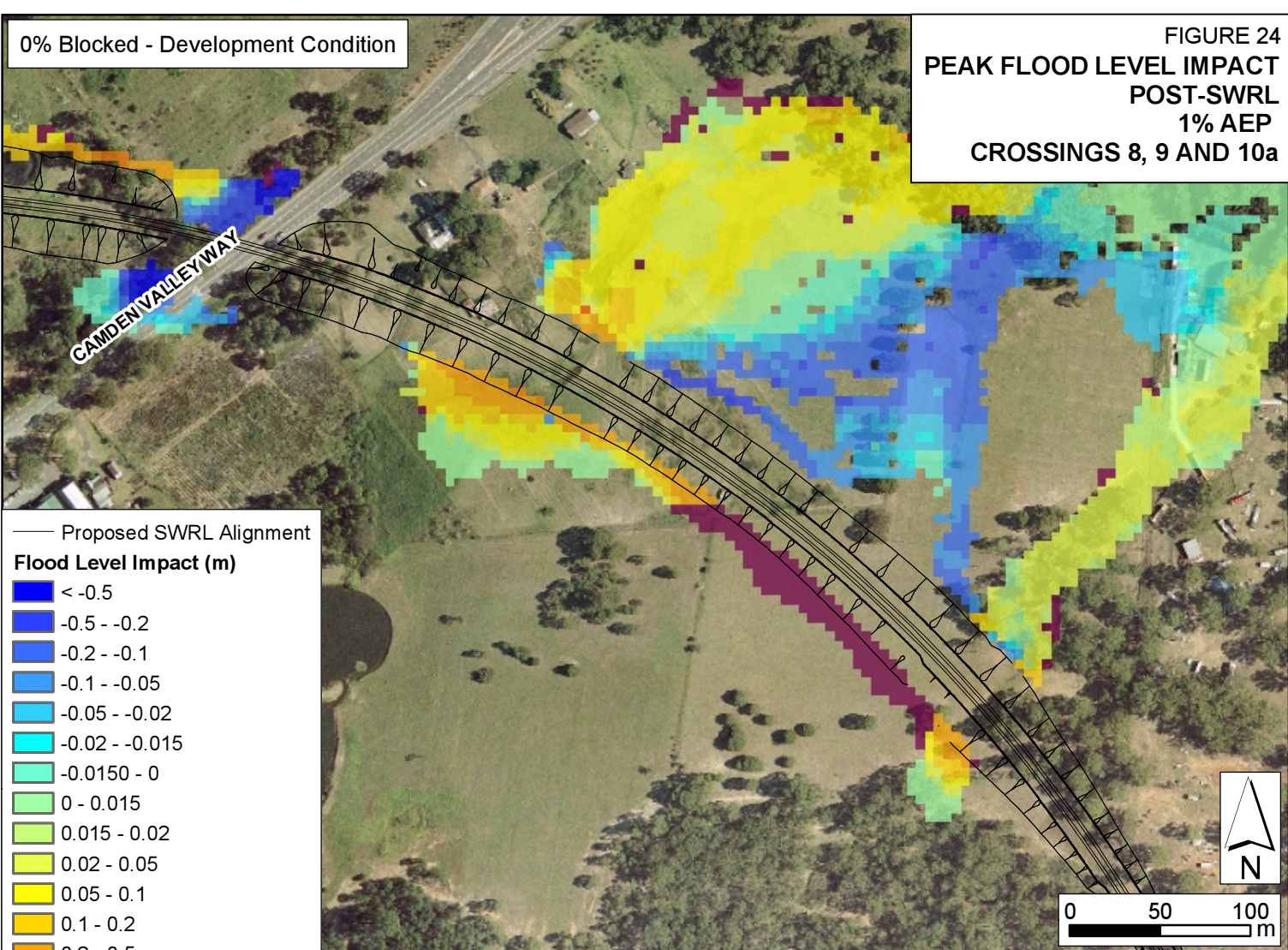
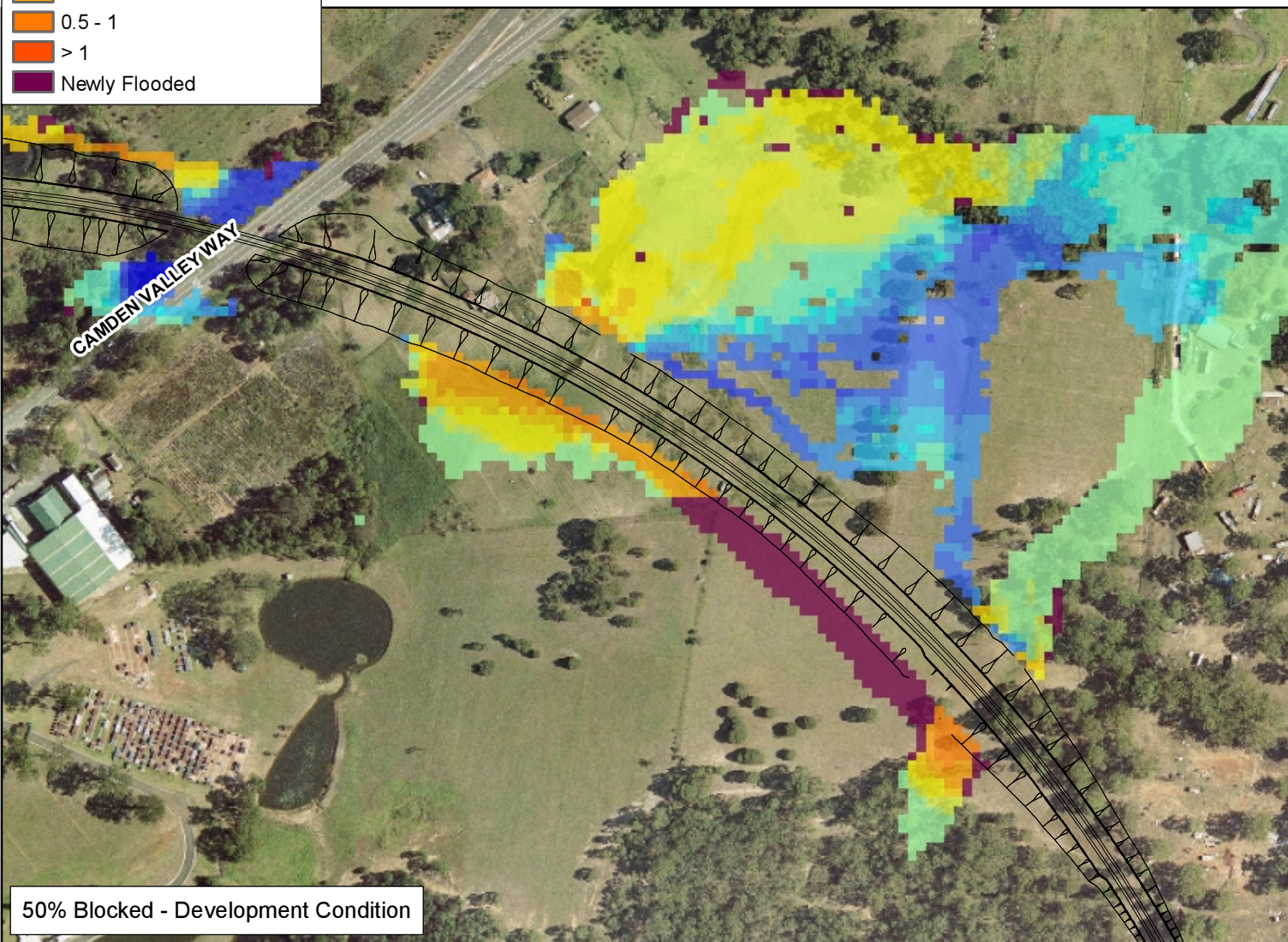


0% Blocked - Development Condition

FIGURE 24
PEAK FLOOD LEVEL IMPACT
POST-SWRL
1% AEP
CROSSINGS 8, 9 AND 10a

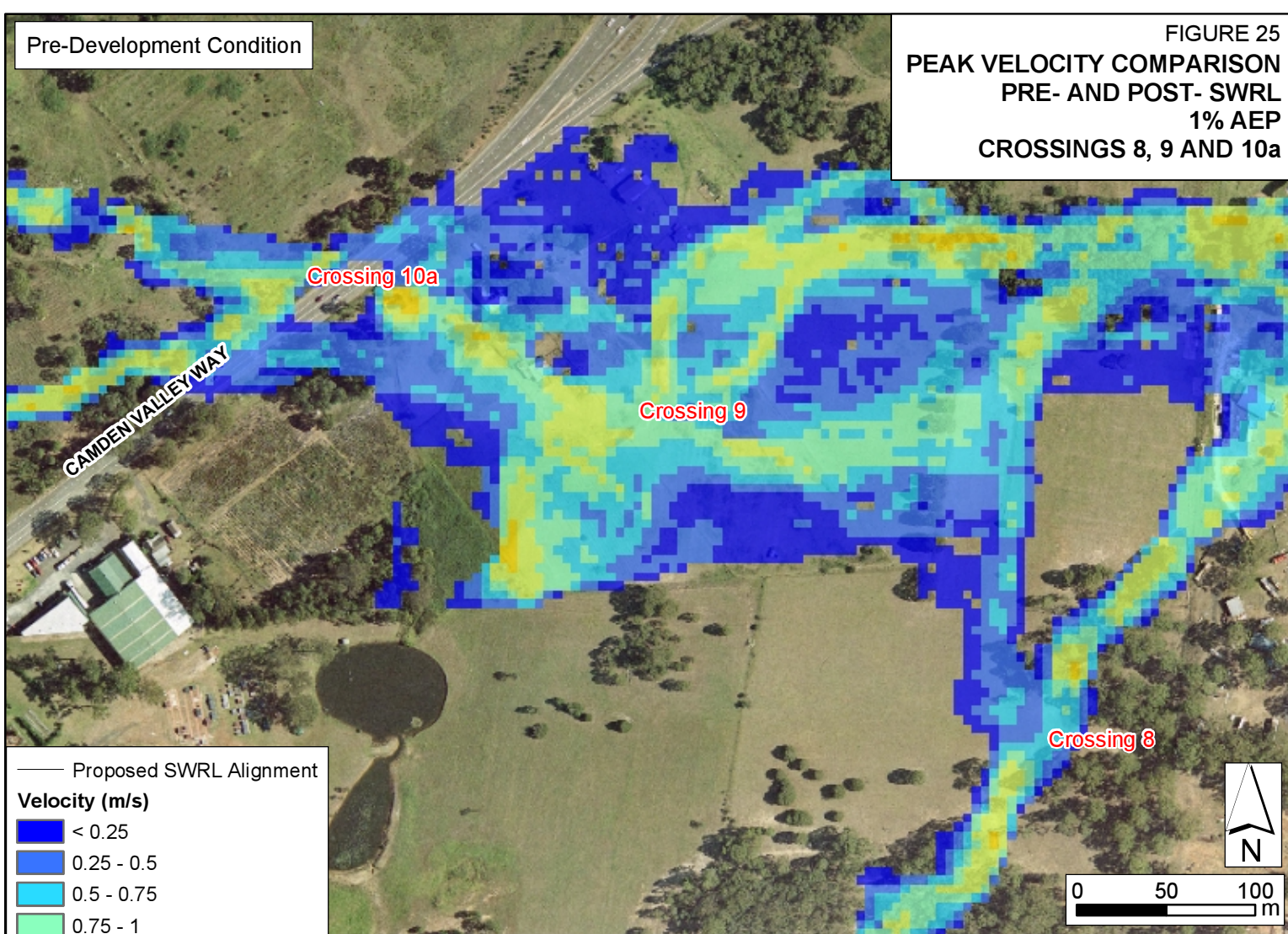


50% Blocked - Development Condition

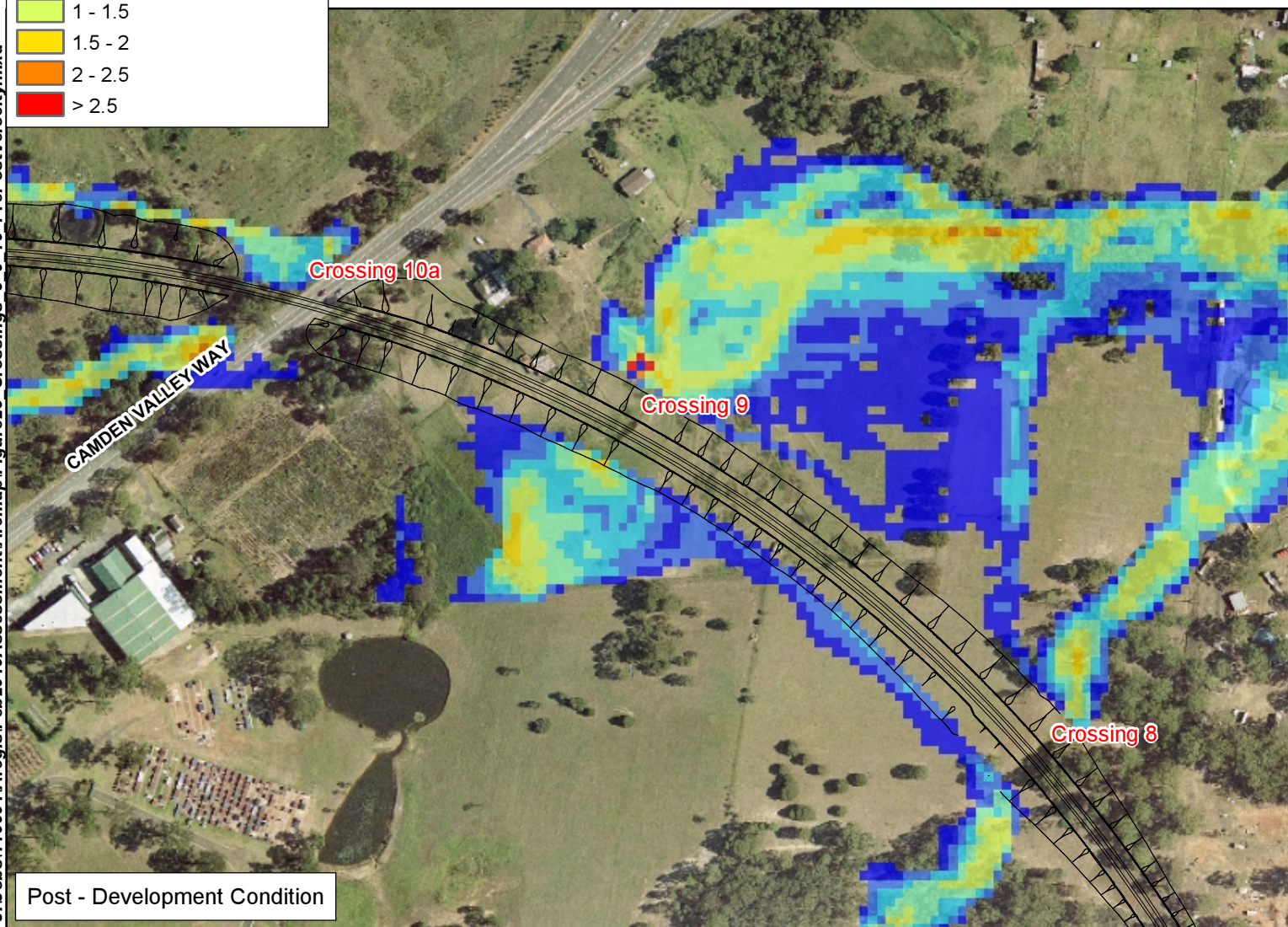


Pre-Development Condition

FIGURE 25
PEAK VELOCITY COMPARISON
PRE- AND POST- SWRL
1% AEP
CROSSINGS 8, 9 AND 10a

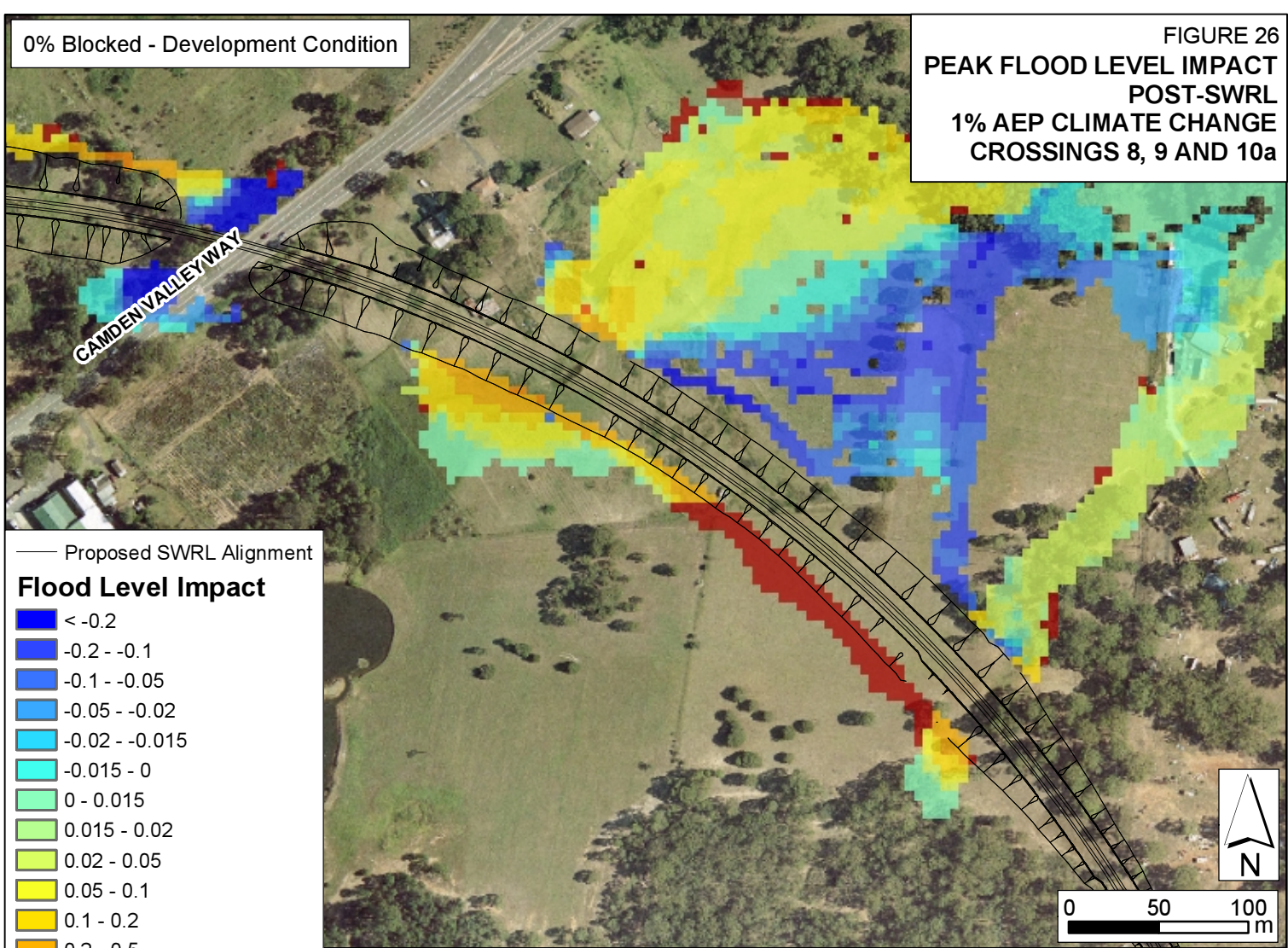


Post - Development Condition



0% Blocked - Development Condition

FIGURE 26
PEAK FLOOD LEVEL IMPACT
POST-SWRL
1% AEP CLIMATE CHANGE
CROSSINGS 8, 9 AND 10a



10% Rainfall Increase - Development Condition

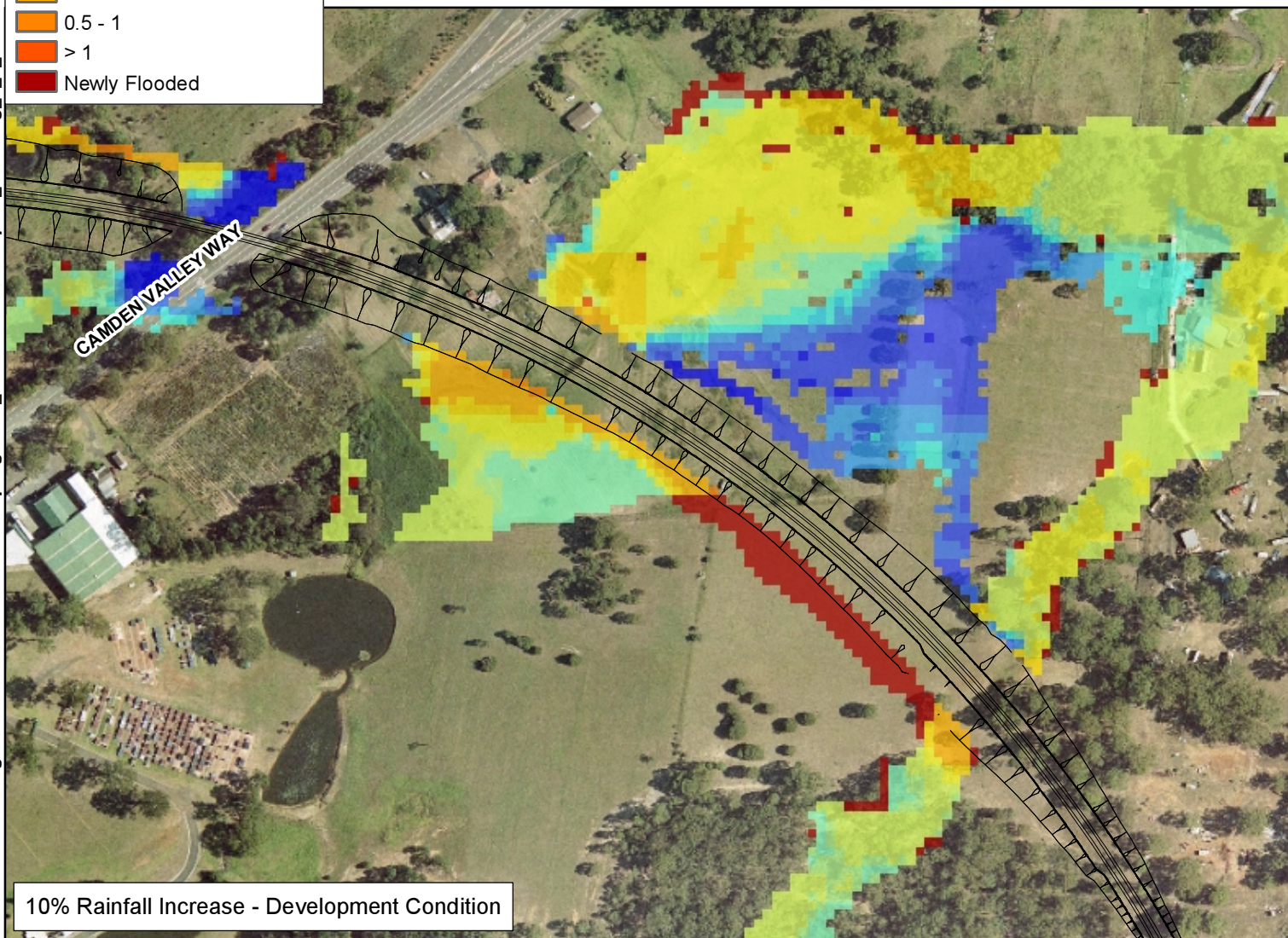
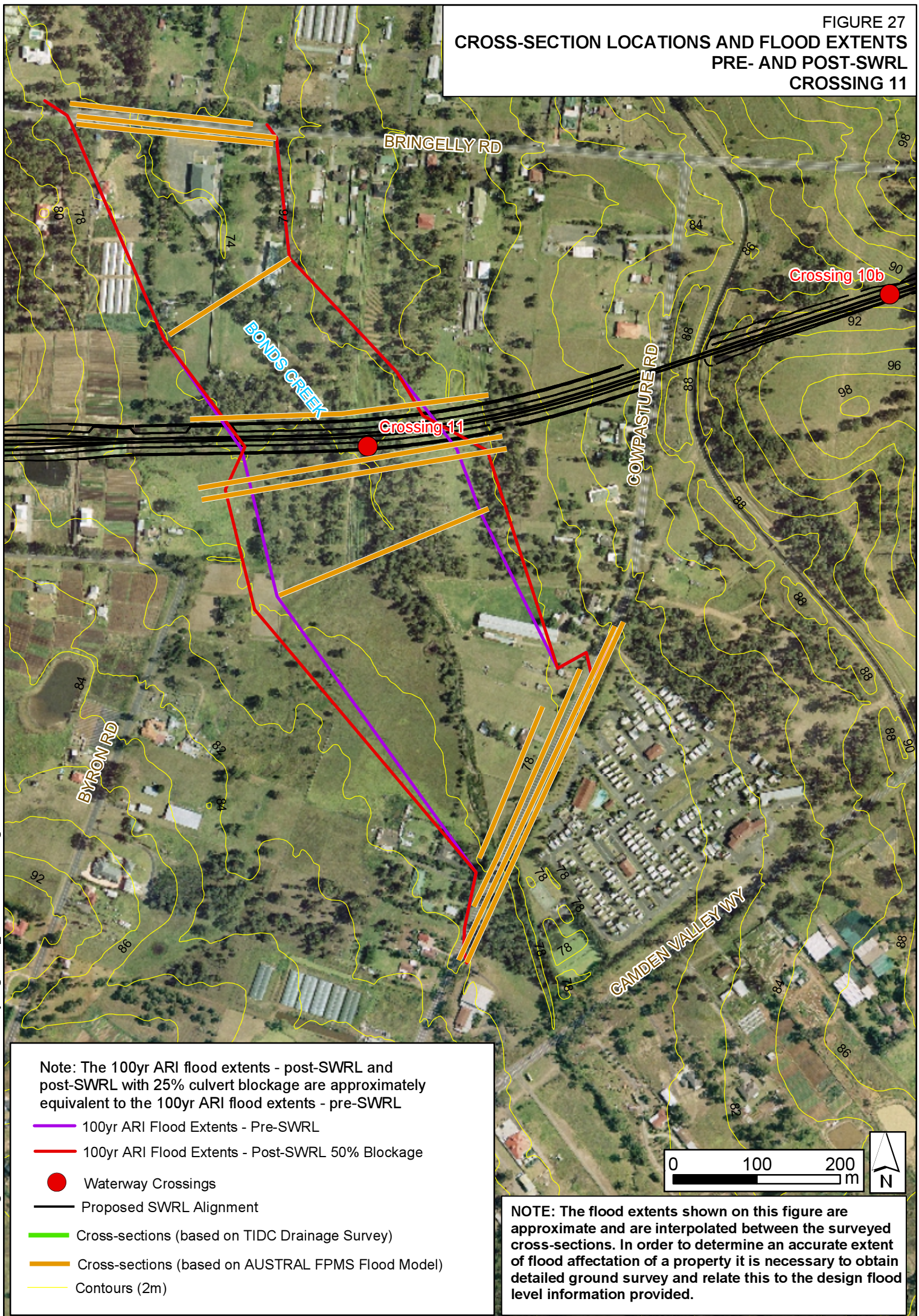


FIGURE 27
CROSS-SECTION LOCATIONS AND FLOOD EXTENTS
PRE- AND POST-SWRL
CROSSING 11



Note: The 100yr ARI flood extents - post-SWRL and post-SWRL with 25% culvert blockage are approximately equivalent to the 100yr ARI flood extents - pre-SWRL

- 100yr ARI Flood Extents - Pre-SWRL
- 100yr ARI Flood Extents - Post-SWRL 50% Blockage
- Waterway Crossings
- Proposed SWRL Alignment
- Cross-sections (based on TIDC Drainage Survey)
- Cross-sections (based on AUSTRAL FPMS Flood Model)
- Contours (2m)

NOTE: The flood extents shown on this figure are approximate and are interpolated between the surveyed cross-sections. In order to determine an accurate extent of flood affectation of a property it is necessary to obtain detailed ground survey and relate this to the design flood level information provided.