

VERTICAL ALIGNMENT

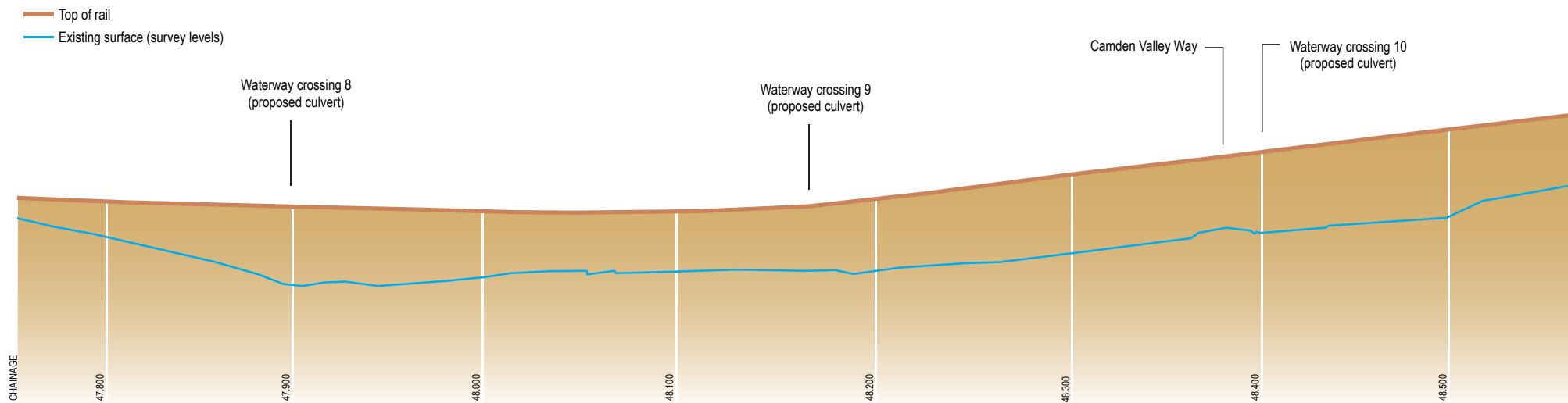
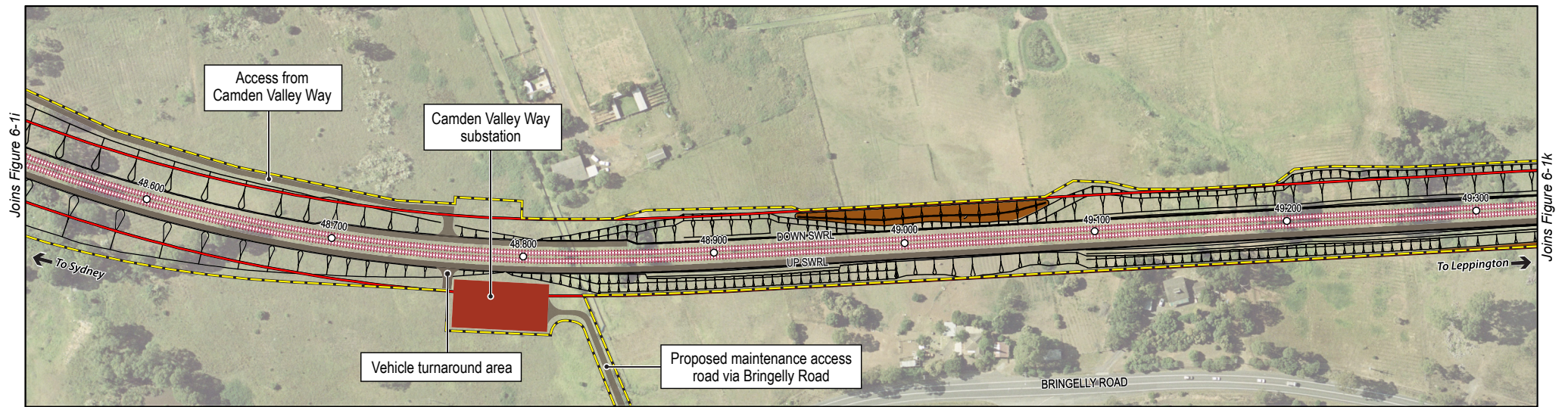


Figure 6-1i The Glenfield to Leppington Rail Line Project

**Note: Indicative only, subject to detailed design*



- Proposed rail line
- Proposed maintenance access road
- Approved rail corridor
- Proposed project footprint
- Proposed noise mound
- Chainage
- Rail line in cutting
- Rail line on embankment

VERTICAL ALIGNMENT

- Top of rail
- Existing surface (survey levels)

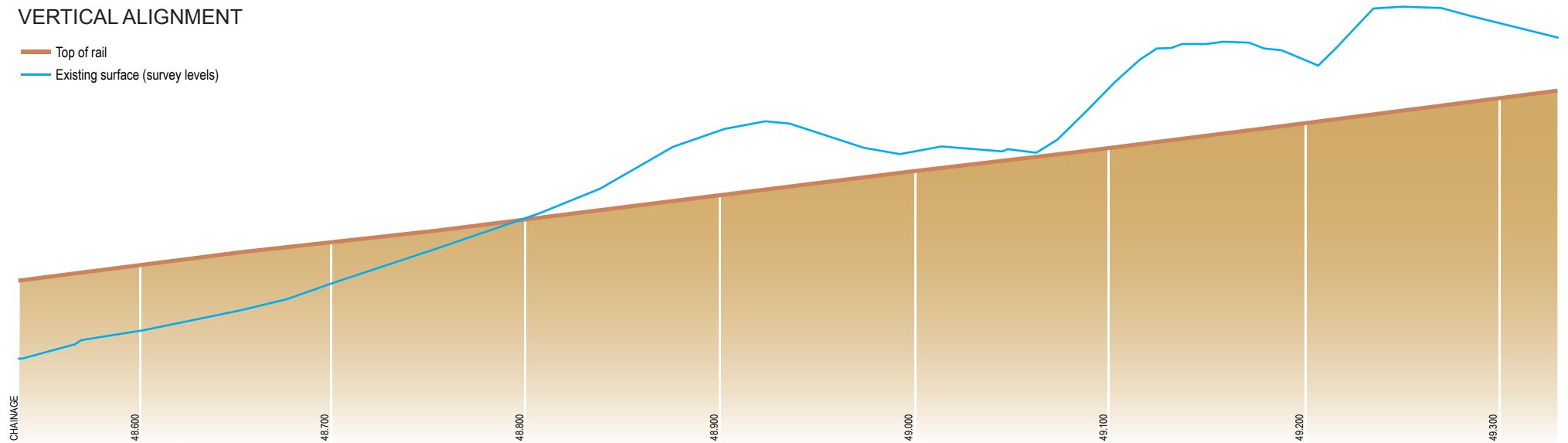


Figure 6-1j The Glenfield to Leppington Rail Line Project
**Note: Indicative only, subject to detailed design*