

REFER TO CIVIL ENGINEERING
DRAWING CSK06



Discovery Point, Wolli Creek
Stage 1
Proposed Site Plan

D	15.11.11	BSD Pedestrian crossing deleted	DL	MA
C	11.11.11	Roof plan updated	DL	MA
B	22.06.11	Trees on site 3 omitted	ST	MA
A	07.02.11	PROJECT APPLICATION	ST	MA
Revision	Date	Description	Initial	Checked

THIS DRAWING HAS BEEN PREPARED IN ACCORDANCE WITH DISCOVERY POINT CONCEPT PLAN URBAN DESIGN GUIDELINES.
Check all dimensions and site conditions prior to commencement of any work, the purchase or ordering of any materials, fittings, plant, services or equipment and the preparation of shop drawings and/or the fabrication of any components.
Do not scale drawings - refer to figured dimensions only. Any discrepancies shall immediately be referred to the architect for clarification.
All drawings may not be reproduced or distributed without prior permission from the architect.



Scale	1:500 @ A1, 1:1000 @ A3		
Drawn	ST	Checked	MA
Project No.	S11191A		
Status	PLANNING		
Plot Date	15/11/2011 12:41:43 PM		
Plot File	S:\11100-11199\11191_australand_wollicreek\A_stage1\cad\plc... ...rs\DA\DA1-101.dwg		
Drawing No.	Revision		
DA1-101	D		

Melbourne 1 Nicholson Street
Melbourne VIC 3000 Australia
T 03 8664 6200 F 03 8664 6300
email melb@batesmart.com.au
http://www.batesmart.com.au

Sydney 1/243 Liverpool Street
East Sydney NSW 2010 Australia
T 02 8354 5100 F 02 8354 5199
email syd@batesmart.com.au
http://www.batesmart.com.au

Bates Smart Pty Ltd ABN 70 004 999 400



Check all dimensions and site conditions prior to commencement of any work, the purchase or ordering of any materials, fittings, plant, services or equipment and the preparation of shop drawings and or the fabrication of any components.

Do not scale drawings - refer to figured dimensions only. Any discrepancies shall immediately be referred to the architect for clarification.

All drawings may not be reproduced or distributed without prior permission from the architect.

COLOUR LEGEND:

- CARPARK
- CORE
- LIFT
- UNUSED CARPARK FOR FUTURE STAGES
- EXISTING CARPARK

C	11.11.11	Parking Layout Revised	DL	MA
B	13.04.11	Project Application	SA	MA
A	07.02.11	Project Application	AW	MA
Revision	Date	Description	Initial	Checked



Linc
Discovery Point, Wolli Creek

Basement Level B0 Part Plan (West)

Status	PLANNING
Scale	1 : 250 @ A1 1:500 @ A3
Drawn	AW Checked MP
Project No.	S11191A
Plot Date	14/11/2011 11:46:13 AM
Plot File	C:\Temp\ARCH\SS-OP1_LAO\B0\B0\B0.dwg

Drawing no. DA2.101 Revision C





Melbourne 1 Nicholson Street
Melbourne VIC 3000 Australia
T 03 8664 6200 F 03 8664 6300
email mel@batesmart.com.au
http://www.batesmart.com.au

Sydney 1/243 Liverpool Street
East Sydney NSW 2010 Australia
T 02 8354 5100 F 02 8354 5199
email syd@batesmart.com.au
http://www.batesmart.com.au

Bates Smart Pty Ltd ABN 70 004 999 400

BATESSMART™

All drawings may not be reproduced or distributed without prior permission from the architect.

 CARPARK
 CORE
 LIFT
 UNUSED CARPARK FOR FUTURE STAGES

Discovery Point

Basement Level B0 Part Plan (East) &
Basement Level B1 Plan

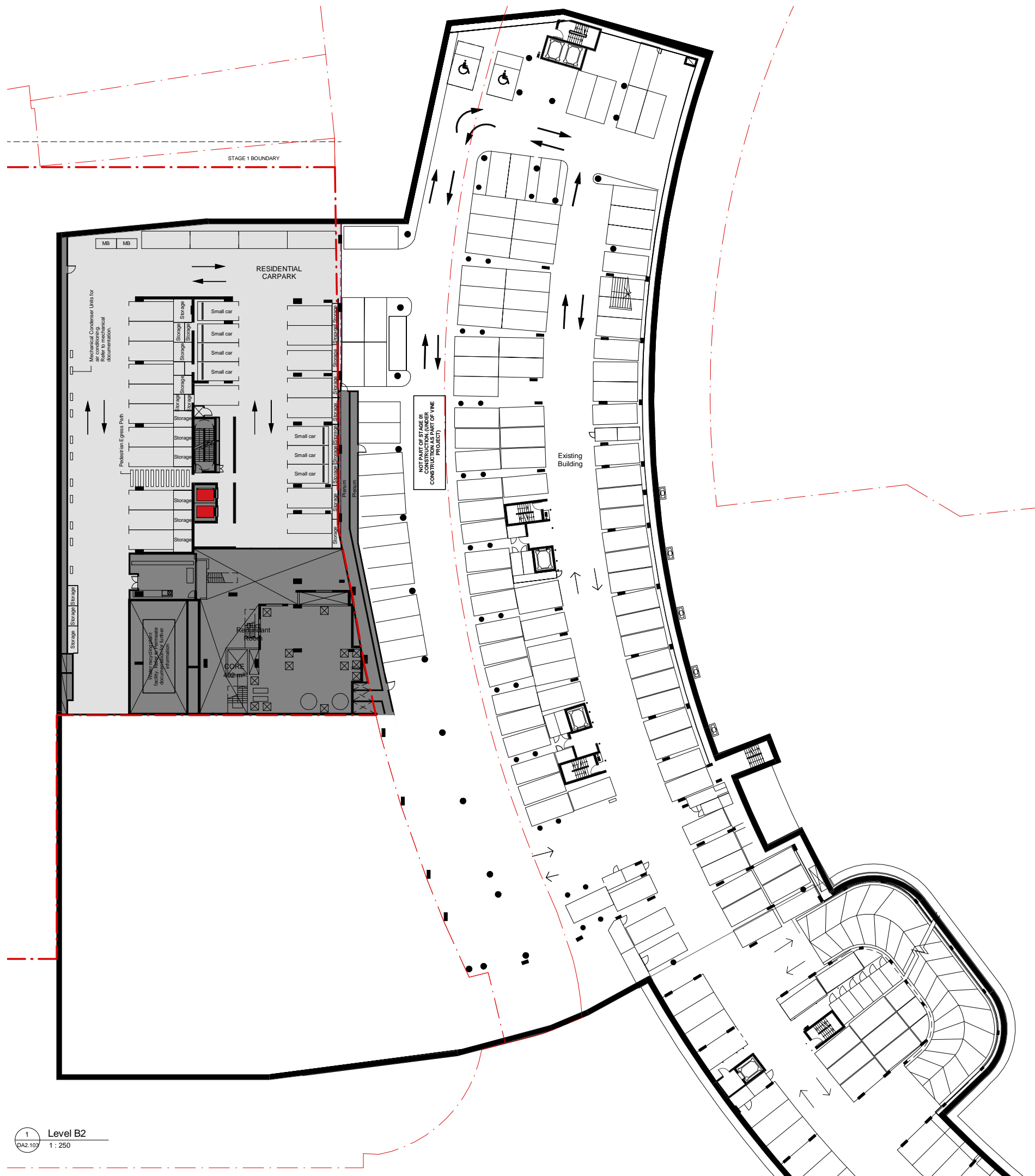
Drawing no.	Revision
DA2.102	B

Bates Smart Pty Ltd ABN 70 004 999 400

BATESSMART™

1 Level B0 Part Plan - East
DA2.102 1 : 250

2 Level B1
DA2.102 1 : 250



Check all dimensions and site conditions prior to commencement of any work, the purchase or ordering of any materials, fittings, plant, services or equipment and the preparation of shop drawings and or the fabrication of any components.

Do not scale drawings - refer to figured dimensions only. Any discrepancies shall immediately be referred to the architect for clarification.

All drawings may not be reproduced or distributed without prior permission from the architect.

COLOUR LEGEND:

- CARPARK
- CORE
- LIFT
- UNUSED CARPARK FOR FUTURE STAGES
- EXISTING CARPARK

B	11.11.11	Parking Layout Amended	DL	MA
A	07.02.11	Project Application	AW	MA
Revision	Date	Description	Initial	Checked



Linc
Discovery Point, Wolli Creek

Basement Level B2 Plan



Status	PLANNING				
Scale	1 : 250	@ A1	1:500	@ A3	
Drawn	AW		Checked	MP	
Project No.	S11191A				
Plot Date	14/11/2011 11:46:19 AM				
Plot File	C:\Temp\ARCH\SS-OP1_LAO\B2\B2\B2.dwg				

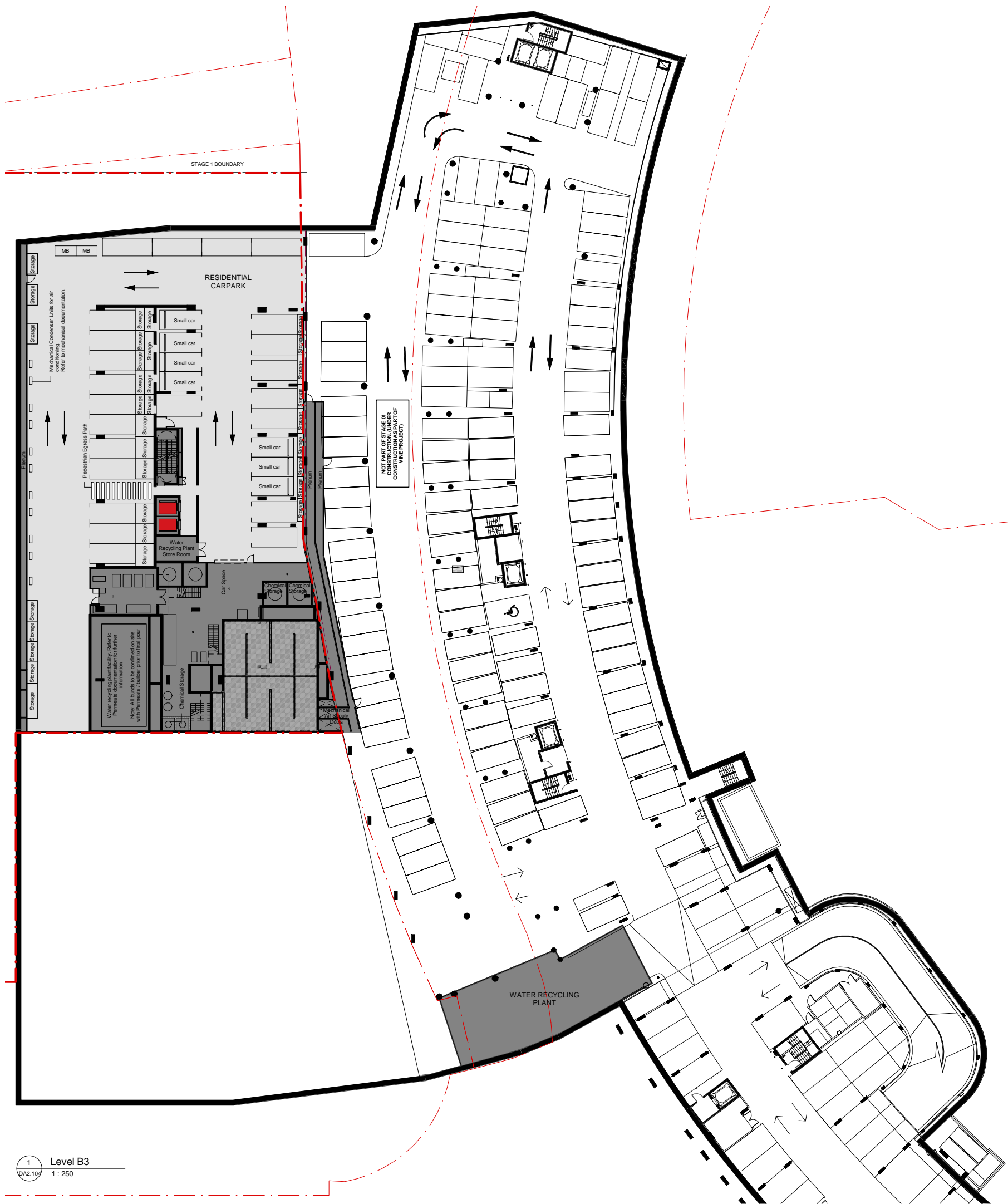
Drawing no.	Revision
DA2.103	B

Melbourne 1 Nicholson Street
Melbourne VIC 3000 Australia
T 03 8664 6200 F 03 8664 6300
email mel@batesmart.com.au
http://www.batesmart.com.au

Sydney 1/243 Liverpool Street
East Sydney NSW 2010 Australia
T 02 8354 5100 F 02 8354 5199
email syd@batesmart.com.au
http://www.batesmart.com.au

Bates Smart Pty Ltd ABN 70 004 999 400

BATESSMART™



Check all dimensions and site conditions prior to commencement of any work, the purchase or ordering of any materials, fittings, plant, services or equipment and the preparation of shop drawings and or the fabrication of any components.

Do not scale drawings - refer to figured dimensions only. Any discrepancies shall immediately be referred to the architect for clarification.

All drawings may not be reproduced or distributed without prior permission from the architect.

COLOUR LEGEND:

- CARPARK
- CORE
- LIFT
- UNUSED CARPARK FOR FUTURE STAGES
- EXISTING CARPARK

B	11.11.11	Parking Layout Amended	DL	MA
A	07.02.11	Project Application	AW	MA
Revision	Date	Description	Initial	Checked



Linc
Discovery Point, Wolli Creek

Basement Level B3 Plan



Status	PLANNING				
Scale	1 : 250	@ A1	1:500	@ A3	
Drawn	AW		Checked	MP	
Project No.	S11191A				
Plot Date	14/11/2011 11:46:21 AM				
Plot File	C:\Temp\ARCH-B3\DP_LAO\B3Recovery\...				

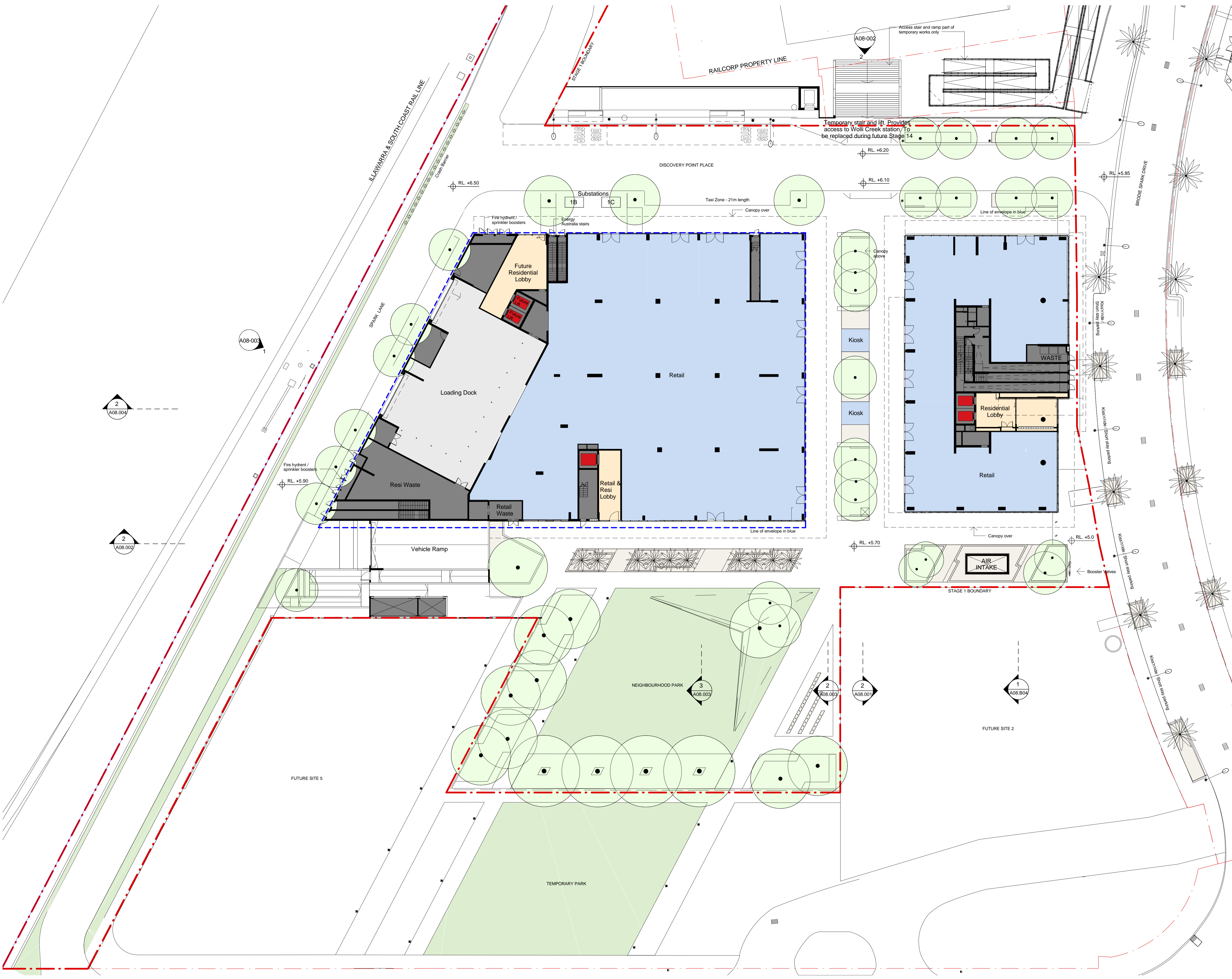
Drawing no.	Revision
DA2.104	B

Melbourne 1 Nicholson Street
Melbourne VIC 3000 Australia
T 03 8664 6200 F 03 8664 6300
email mel@batesmart.com.au
http://www.batesmart.com.au

Sydney 1/243 Liverpool Street
East Sydney NSW 2010 Australia
T 02 8354 5100 F 02 8354 5199
email syd@batesmart.com.au
http://www.batesmart.com.au

Bates Smart Pty Ltd ABN 70 004 999 400

BATESSMART™



Check all dimensions and site conditions prior to commencement of any work, the purchase or ordering of any materials, fittings, plant, services or equipment and the preparation of shop drawings and or the fabrication of any components.

Do not scale drawings - refer to figured dimensions only. Any discrepancies shall immediately be referred to the architect for clarification.

All drawings may not be reproduced or distributed without prior permission from the architect.

COLOUR LEGEND:

- RESIDENTIAL FOYER
- RETAIL
- LOADING
- CARPARK
- CORE
- EXISTING CARPARK

E	15.11.11	Kiss'n'ride labelled	DL	MA
D	11.11.11	Basement Access Amended	DL	MA
C	17.06.11	Project Application	SA	MA
B	13.04.11	Project Application	SA	MA
A	07.02.11	Project Application	AW	MA
Revision	Date	Description	Initial	Checked



Linc
Discovery Point, Wolli Creek

Ground Level Plan

Status	PLANNING
Scale	1 : 250 @ A1 1:500 @ A3
Drawn	AW Checked MP
Project No.	S11191A
Plot Date	15/11/2011 2:50:59 PM
Plot File	C:\Temp\ARCH88-DP1_A1A.rvt

Drawing no. DA2.200 Revision E

Melbourne 1 Nicholson Street
Melbourne VIC 3000 Australia
T 03 8664 6200 F 03 8664 6300
email: mel@batesmart.com.au
http://www.batesmart.com.au

Sydney 1/243 Liverpool Street
East Sydney NSW 2010 Australia
T 02 8354 5100 F 02 8354 5199
email: syd@batesmart.com.au
http://www.batesmart.com.au

Bates Smart Pty Ltd ABN 70 004 999 400

BATESSMART™

Check all dimensions and site conditions prior to commencement of any work, the purchase or ordering of any materials, fittings, plant, services or equipment and the preparation of shop drawings and or the fabrication of any components.

Do not scale drawings - refer to figured dimensions only. Any discrepancies shall immediately be referred to the architect for clarification.

All drawings may not be reproduced or distributed without prior permission from the architect.

COLOUR LEGEND:

- 1B
- 2B
- RESIDENTIAL FOYER
- BALCONY
- RETAIL
- CORE
- LIFT



C	11.11.11	Interface with Bldg 4 Amended	DL	MA
B	17.06.11	Project Application	SA	MA
A	07.02.11	Project Application	AW	MA
Revision	Date	Description	Initial	Checked



Linc
Discovery Point, Wolli Creek

Level 01 Plan



Status	PLANNING
Scale	1 : 250 @ A1 1:500 @ A3
Drawn	AW Checked MP
Project No.	S11191A
Plot Date	14/11/2011 11:46:30 AM
Plot File	C:\Temp\ARCH\SS\DP1_LAO\Raceway\JNT

Drawing no.	Revision
DA2.201	C

Melbourne 1 Nicholson Street
Melbourne VIC 3000 Australia
T 03 8664 6200 F 03 8664 6300
email mel@batesmart.com.au
http://www.batesmart.com.au

Sydney 1/243 Liverpool Street
East Sydney NSW 2010 Australia
T 02 8354 5100 F 02 8354 5199
email syd@batesmart.com.au
http://www.batesmart.com.au

Bates Smart Pty Ltd ABN 70 004 999 400

BATESSMART™

Check all dimensions and site conditions prior to commencement of any work, the purchase or ordering of any materials, fittings, plant, services or equipment and the preparation of shop drawings and or the fabrication of any components.

Do not scale drawings - refer to figured dimensions only. Any discrepancies shall immediately be referred to the architect for clarification.

All drawings may not be reproduced or distributed without prior permission from the architect.

COLOUR LEGEND:

- 1B
- 2B
- RESIDENTIAL FOYER
- BALCONY
- GYM & POOL AMENITIES
- RETAIL
- CORE
- LIFT

C	11.11.11	Layout of pool deck amended	DL	MA
B	17.06.11	Project Application	SA	MA
A	07.02.11	Project Application	AW	MA
Revision	Date	Description	Initial	Checked



Linc
Discovery Point, Wolli Creek

Level 02 Plan

Status	PLANNING			
Scale	1 : 250	@ A1	1:500	@ A3
Drawn	AW		Checked	MP
Project No.	S11191A			
Plot Date	14/11/2011 11:46:34 AM			
Plot File	C:\Temp\ARCH\SS-OP1_LAO\Bacon\jml			

Drawing no.	Revision
DA2.202	C

Melbourne 1 Nicholson Street
Melbourne VIC 3000 Australia
T 03 8664 6200 F 03 8664 6300
email mel@batesmart.com.au
http://www.batesmart.com.au

Sydney 1/243 Liverpool Street
East Sydney NSW 2010 Australia
T 02 8354 5100 F 02 8354 5199
email syd@batesmart.com.au
http://www.batesmart.com.au

Bates Smart Pty Ltd ABN 70 004 999 400

BATESSMART™

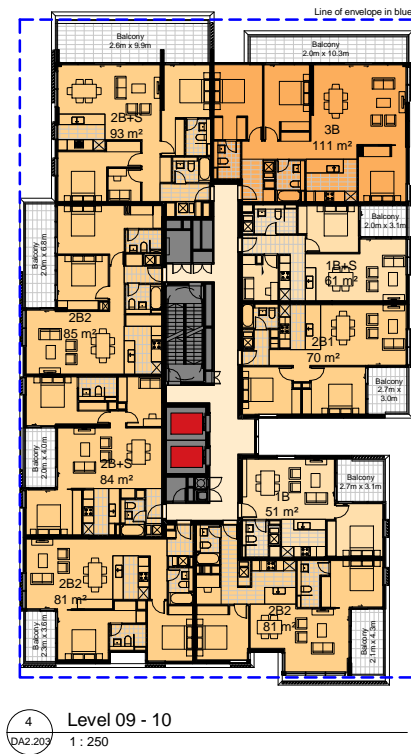
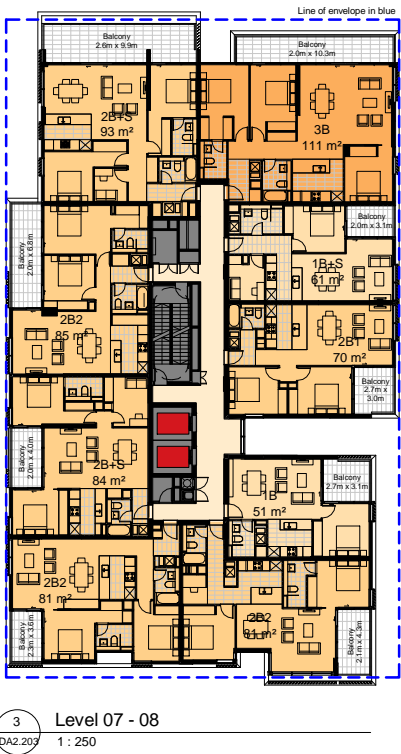
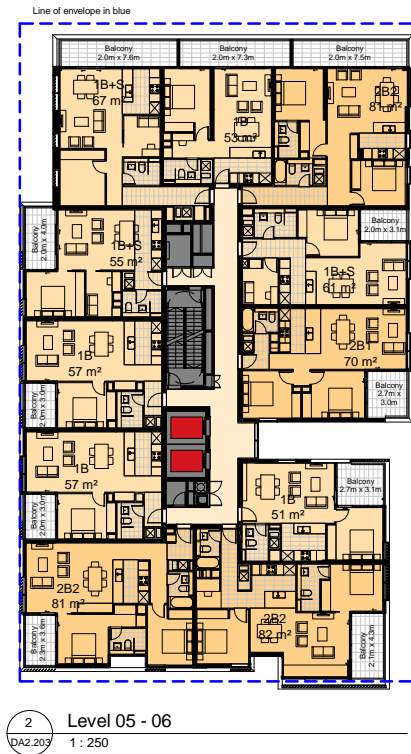
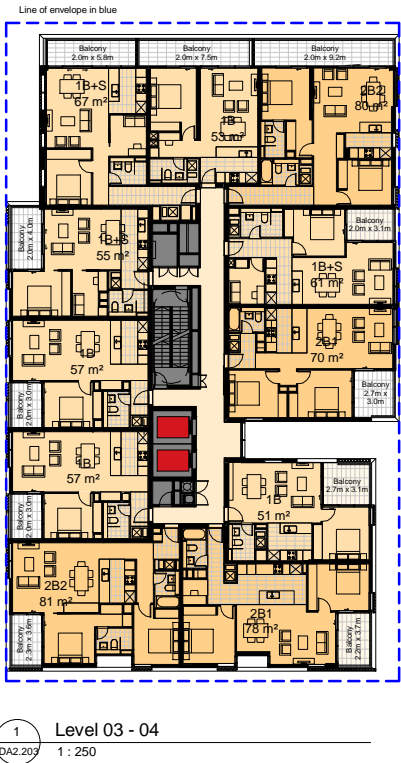
Check all dimensions and site conditions prior to commencement of any work, the purchase or ordering of any materials, fittings, plant, services or equipment and the preparation of shop drawings and or the fabrication of any components.

Do not scale drawings - refer to figured dimensions only. Any discrepancies shall immediately be referred to the architect for clarification.

All drawings may not be reproduced or distributed without prior permission from the architect.

COLOUR LEGEND:

- 1B
- 2B
- BALCONY
- CORE
- LIFT



B	11.11.11	Balcony areas added	DL	MA
A	07.02.11	Project Application	AW	MA
Revision	Date	Description	Initial	Checked



Linc
Discovery Point, Wolli Creek

Level 03 - 10



Status	PLANNING			
Scale	1 : 250	@ A1	1:500	@A3
Drawn	AW	Checked	MP	
Project No.	S11191A			
Plot Date	14/11/2011 11:46:42 AM			
Plot File	C:\Temp\ARCH\85\DP1_LAND\Drawings\JNT			
Drawing no.	DA2.203		Revision	
		B		

Melbourne 1 Nicholson Street
Melbourne VIC 3000 Australia
T 03 8664 6200 F 03 8664 6300
email mel@batesmart.com.au
http://www.batesmart.com.au

Sydney 1/243 Liverpool Street
East Sydney NSW 2010 Australia
T 02 8354 5100 F 02 8354 5199
email syd@batesmart.com.au
http://www.batesmart.com.au

Bates Smart Pty Ltd ABN 70 004 999 400

BATESSMART™

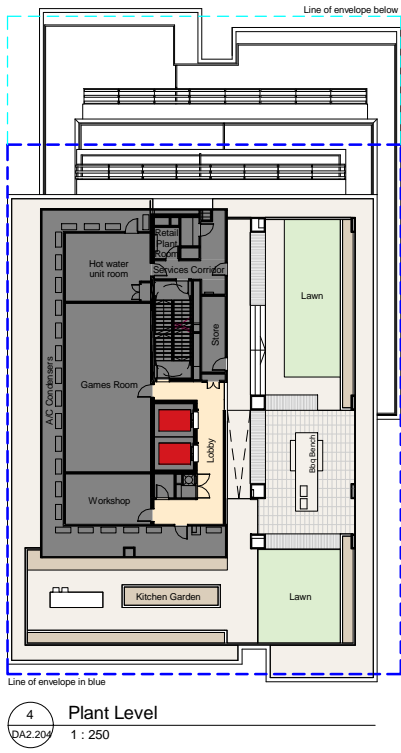
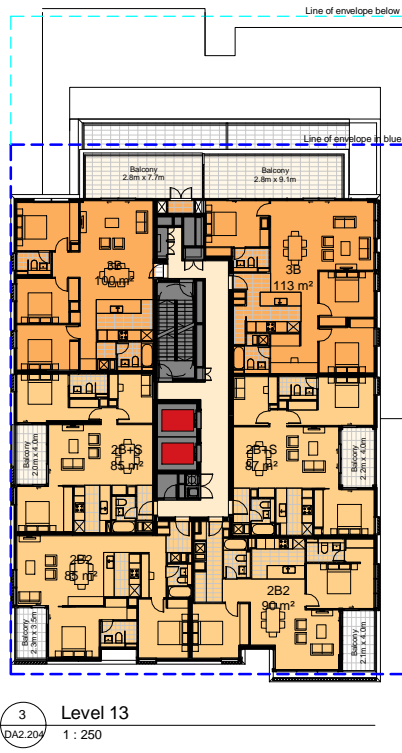
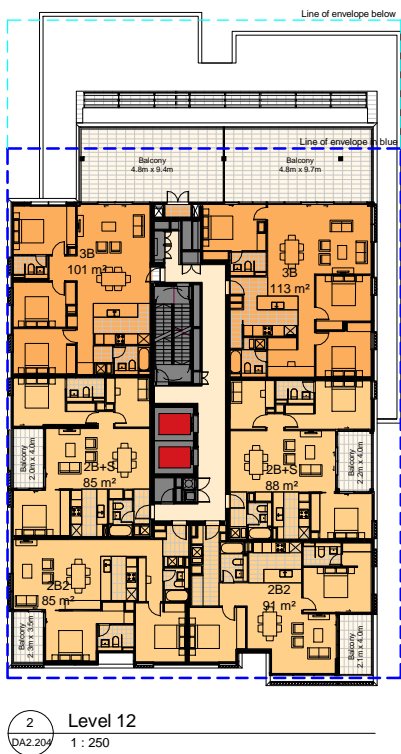
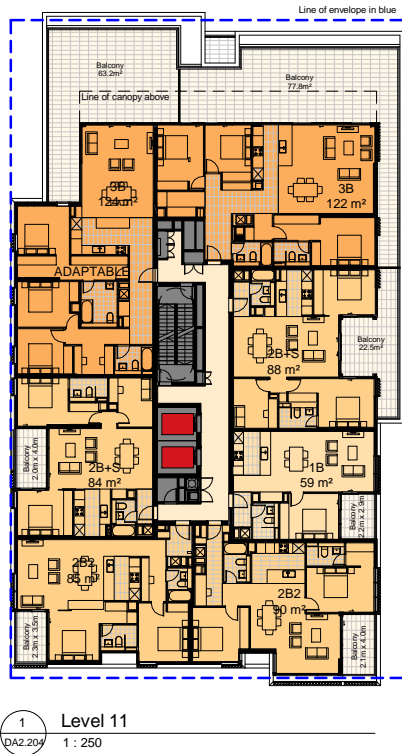
Check all dimensions and site conditions prior to commencement of any work, the purchase or ordering of any materials, fittings, plant, services or equipment and the preparation of shop drawings and or the fabrication of any components.

Do not scale drawings - refer to figured dimensions only. Any discrepancies shall immediately be referred to the architect for clarification.

All drawings may not be reproduced or distributed without prior permission from the architect.

COLOUR LEGEND:

- 2B
- 3B
- RESIDENTIAL FOYER
- BALCONY
- CORE
- LIFT



D	11.11.11	Balcony Areas Added	DL	MA
C	17.06.11	Roof Layout Amended	SA	MA
B	14.04.11	Project Application	SA	MA
A	07.02.11	Project Application	AW	MA
Revision	Date	Description	Initial	Checked



Linc
Discovery Point, Wolli Creek

Level 11 - 13 & Plant Level Plan

Status	PLANNING
Scale	1 : 250 @ A1 1:500 @ A3
Drawn	AW Checked MP
Project No.	S11191A
Plot Date	14/11/2011 12:05:10 PM
Plot File	C:\Temp\ARCH\85-OP1_LAO\Drawings\JNT

Drawing no.	Revision
DA2.204	D

Melbourne 1 Nicholson Street
Melbourne VIC 3000 Australia
T 03 8664 6200 F 03 8664 6300
email mel@batesmart.com.au
http://www.batesmart.com.au

Sydney 1/243 Liverpool Street
East Sydney NSW 2010 Australia
T 02 8354 5100 F 02 8354 5199
email syd@batesmart.com.au
http://www.batesmart.com.au

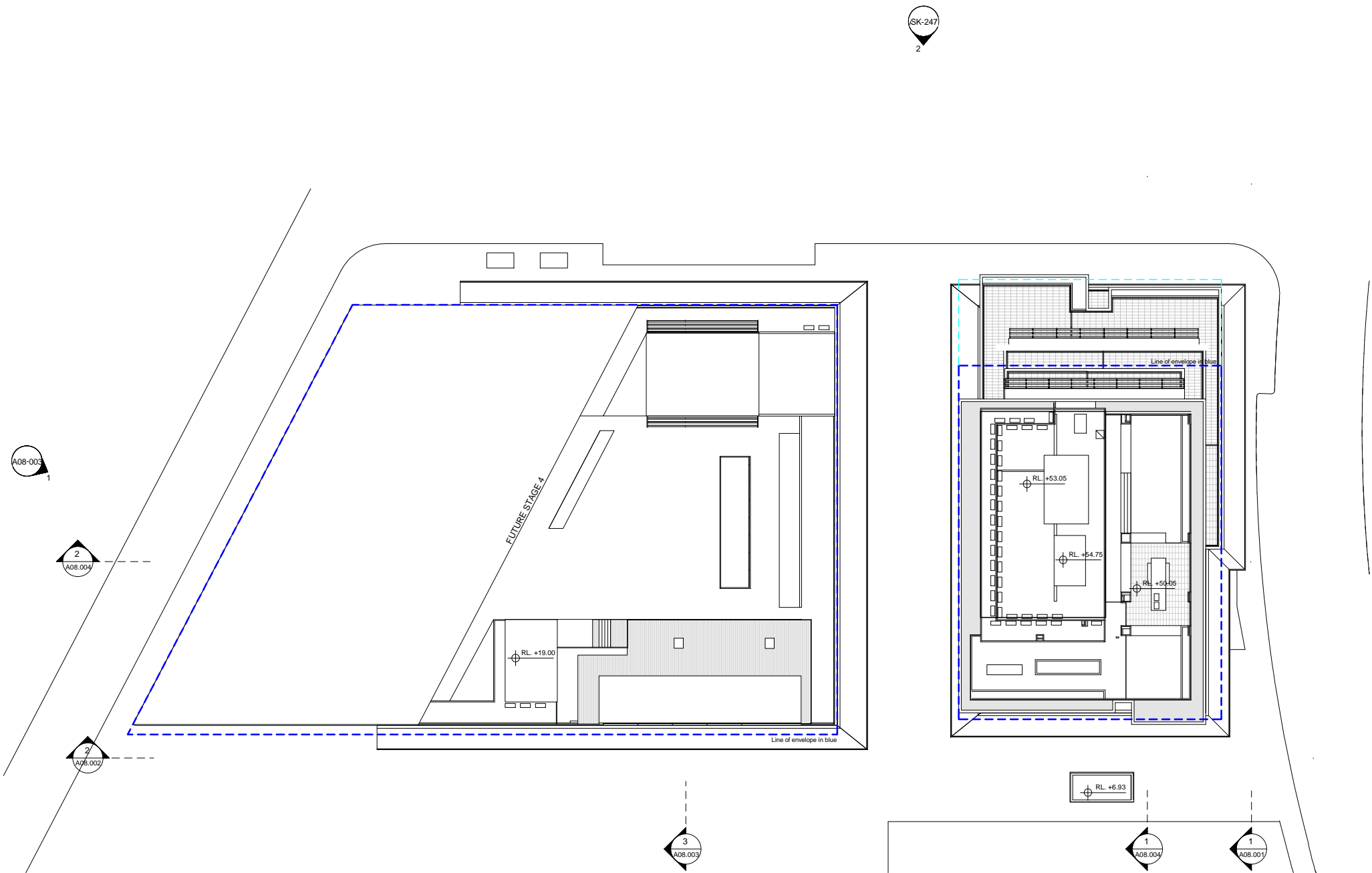
Bates Smart Pty Ltd ABN 70 004 999 400

BATESSMART™

Check all dimensions and site conditions prior to commencement of any work, the purchase or ordering of any materials, fittings, plant, services or equipment and the preparation of shop drawings and or the fabrication of any components.

Do not scale drawings - refer to figured dimensions only. Any discrepancies shall immediately be referred to the architect for clarification.

All drawings may not be reproduced or distributed without prior permission from the architect.



D	11.11.11	Roof Layout Amended	DL	MA
C	17.06.11	Project Application	SA	MA
B	14.04.11	Project Application	SA	MA
A	07.02.11	Project Application	AW	MA
Revision	Date	Description	Initial	Checked



Linc
Discovery Point, Wolli Creek

Roof Level Plan



Status	PLANNING			
Scale	1 : 250	@ A1	1:500	@ A3
Drawn	AW	Checked	MP	
Project No.	S11191A			
Plot Date	14/11/2011 11:46:55 AM			
Plot File	C:\Temp\ARCH\SS-OP1_LAO\Rooflevel.dwt			

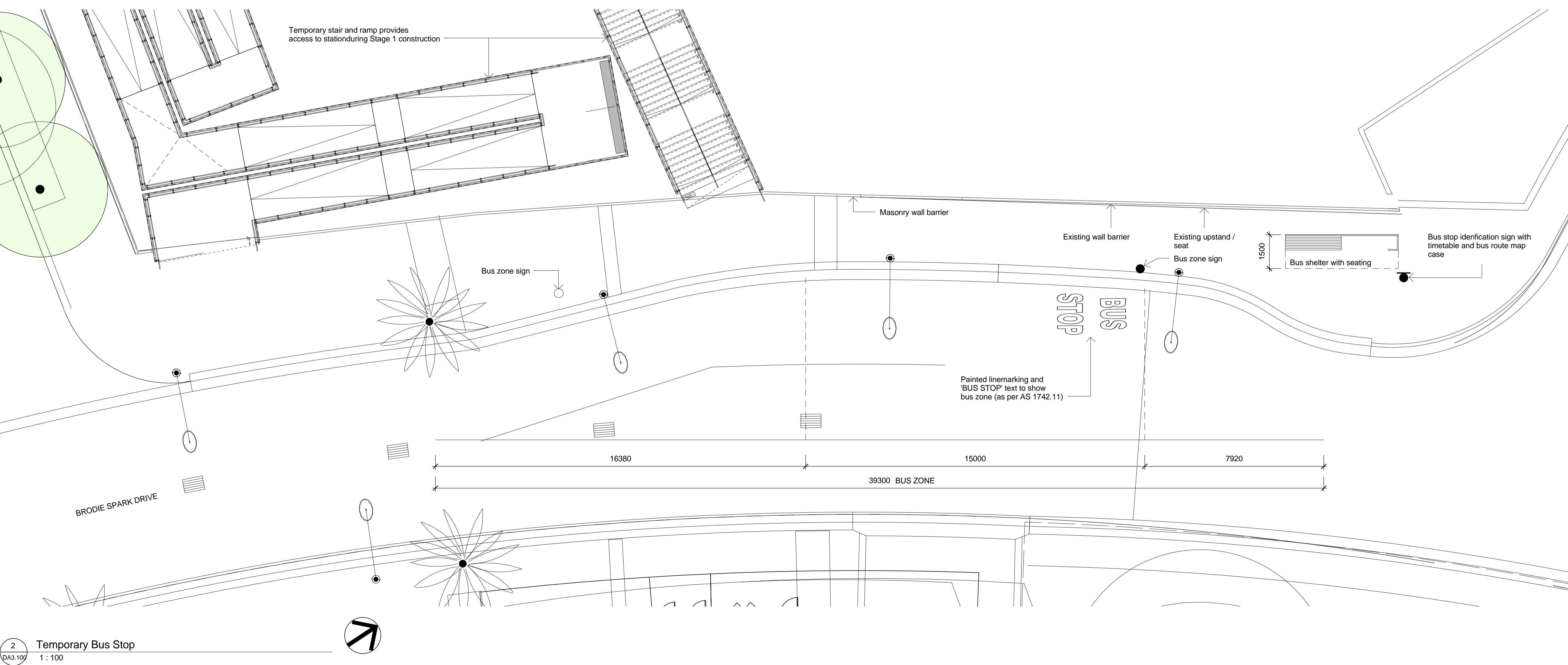
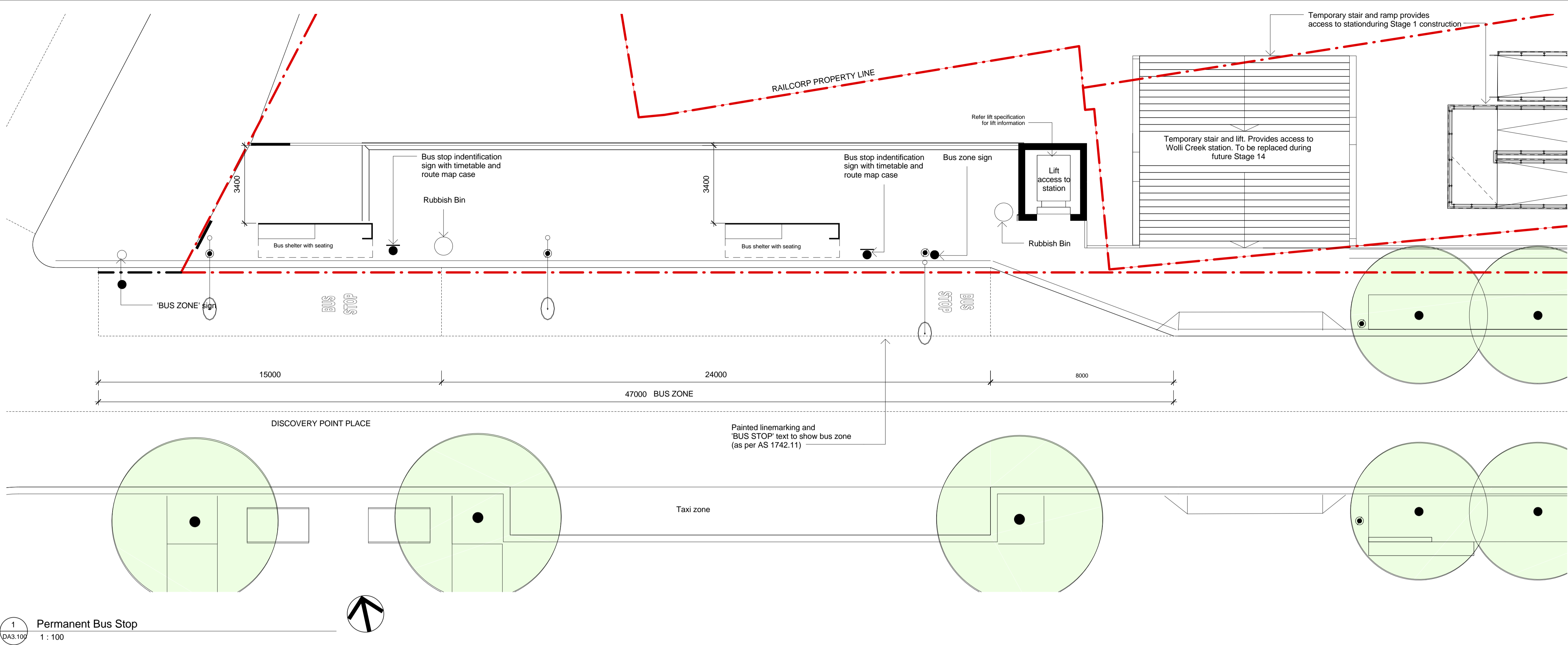
Drawing no. **DA2.205** Revision **D**

Melbourne 1 Nicholson Street
Melbourne VIC 3000 Australia
T 03 8664 6200 F 03 8664 6300
email mel@batesmart.com.au
http://www.batesmart.com.au

Sydney 1/243 Liverpool Street
East Sydney NSW 2010 Australia
T 02 8354 5100 F 02 8354 5199
email syd@batesmart.com.au
http://www.batesmart.com.au

Bates Smart Pty Ltd ABN 70 004 999 400

BATESSMART™



Check all dimensions and site conditions prior to commencement of any work, the purchase or ordering of any materials, fittings, plant, services or equipment and the preparation of shop drawings and or the fabrication of any components.

Do not scale drawings - refer to figured dimensions only. Any discrepancies shall immediately be referred to the architect for clarification.

All drawings may not be reproduced or distributed without prior permission from the architect.

D	15.11.11	Pedestrian crossing removed	DL	MA
C	11.11.11	DPP Road Layout Amended	DL	MA
B	17.06.11	Project Application	SA	MA
A	07.02.11	Project Application	AW	MA
Revision	Date	Description	Initial	Checked



Linc
Discovery Point, Wolli Creek

Permanent & Temporary Bus Stops

Status	PLANNING
Scale	1 : 100 @ A1
Drawn	AW
Checked	MP
Project No.	S11191A
Plot Date	15/11/2011 2:51:09 PM
Plot File	C:\Temp\ARCH\BS-DP1_A1A.rvt

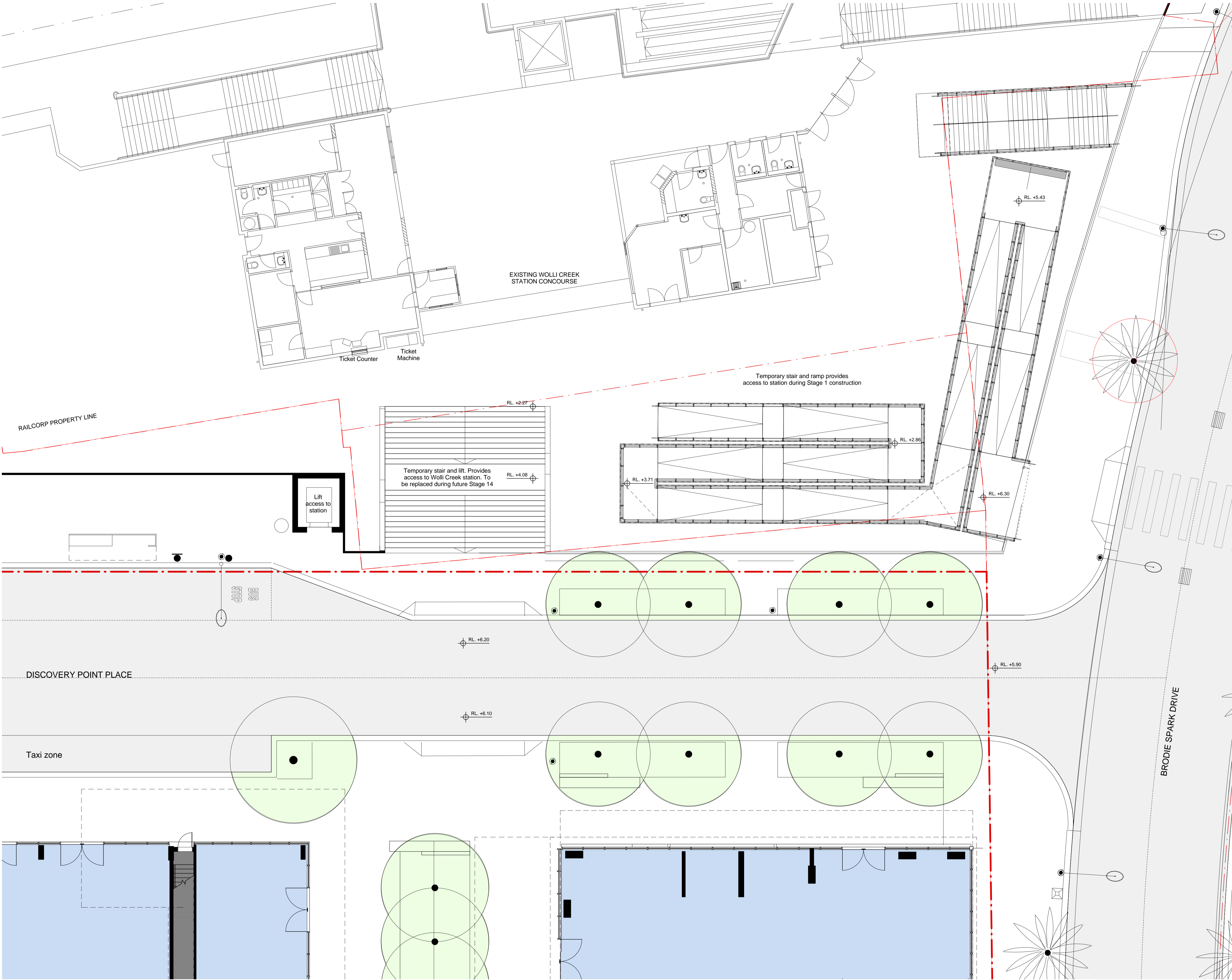
Drawing no.	DA3.100
Revision	D

Melbourne 1 Nicholson Street
Melbourne VIC 3000 Australia
T 03 8664 6200 F 03 8664 6300
email: mel@batesmart.com.au
http://www.batesmart.com.au

Sydney 1/243 Liverpool Street
East Sydney NSW 2010 Australia
T 02 8354 5100 F 02 8354 5199
email: syd@batesmart.com.au
http://www.batesmart.com.au

Bates Smart Pty Ltd ABN 70 004 999 400

BATESSMART™



Check all dimensions and site conditions prior to commencement of any work, the purchase or ordering of any materials, fittings, plant, services or equipment and the preparation of shop drawings and or the fabrication of any components.

Do not scale drawings - refer to figured dimensions only. Any discrepancies shall immediately be referred to the architect for clarification.

All drawings may not be reproduced or distributed without prior permission from the architect.

D	15.11.11	Pedestrian crossing removed	DL	MA
C	11.11.11	Station Stairs Updated	DL	MA
B	17.06.11	Project Application	SA	MA
A	07.02.11	Project Application	AW	MA
Revision	Date	Description	Initial	Checked



Linc
Discovery Point, Wolli Creek



Status	PLANNING
Scale	1 : 100 @ A1 1:200 @A3
Drawn	AW Checked MP
Project No.	S11191A
Plot Date	15/11/2011 2:51:58 PM
Plot File	C:\Temp\ARCH88-DP1_ALA.rvt

Drawing no. **DA3.101** Revision **D**

Melbourne 1 Nicholson Street
Melbourne VIC 3000 Australia
T 03 8664 6200 F 03 8664 6300
email: mel@batesmart.com.au
http://www.batesmart.com.au

Sydney 1/243 Liverpool Street
East Sydney NSW 2010 Australia
T 02 8354 5100 F 02 8354 5199
email: syd@batesmart.com.au
http://www.batesmart.com.au

Bates Smart Pty Ltd ABN 70 004 999 400

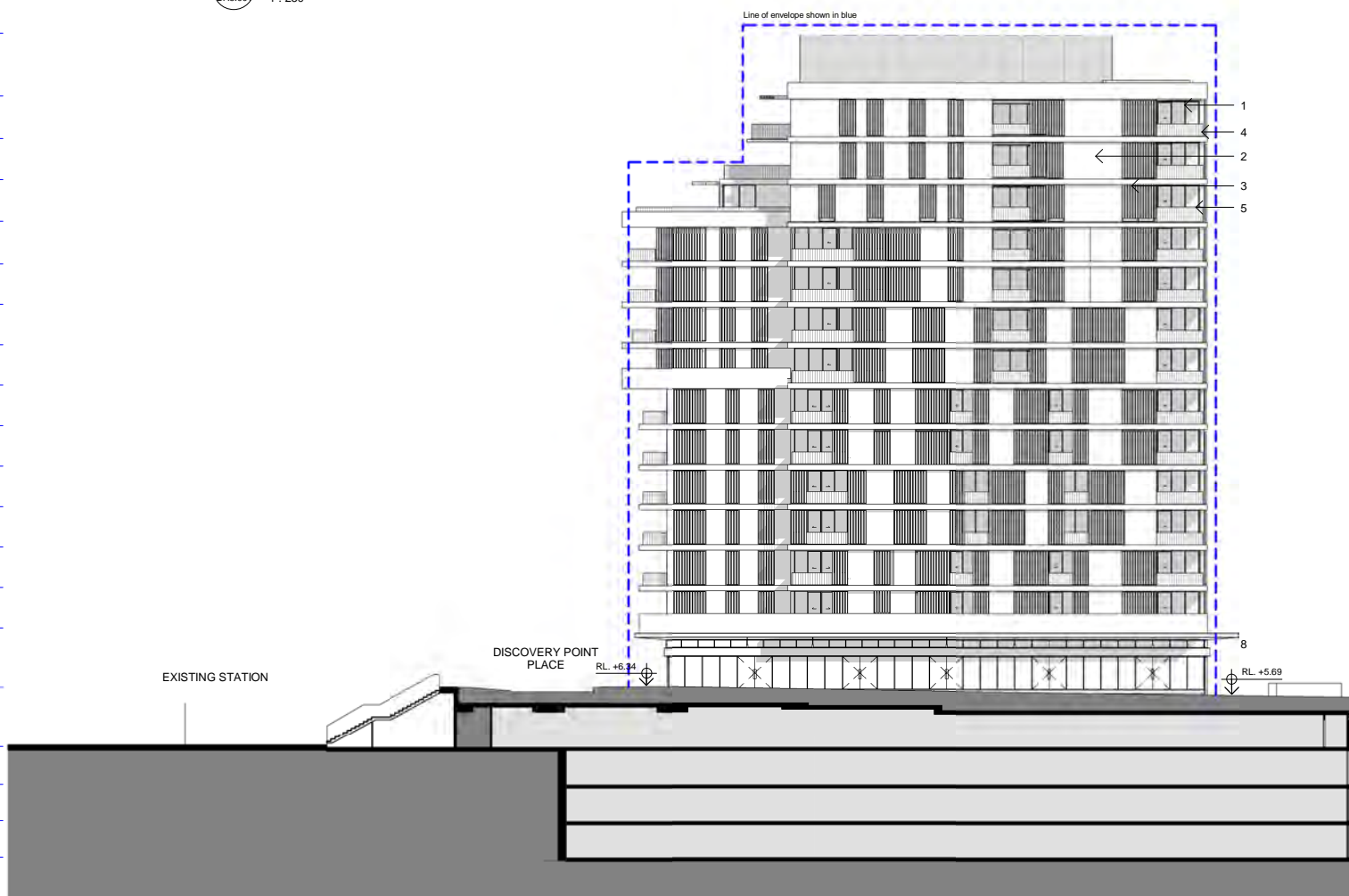
BATESSMARTTM

- T/Plant
SSL: 54700
- Plant Level
SSL: 50050
- Level 13
SSL: 46900
- Level 12
SSL: 43850
- Level 11
SSL: 40750
- Level 10
SSL: 37600
- Level 09
SSL: 34600
- Level 08
SSL: 31600
- Level 07
SSL: 28600
- Level 06
SSL: 25600
- Level 05
SSL: 22600
- Level 04
SSL: 19600
- Level 03
SSL: 16600
- Level 02
SSL: 13600
- Level 01
SSL: 10600
- Level 00
- Level B0
SSL: 1800
- Level B1
SSL: -1000
- Level B2
SSL: -3700
- Level B3
SSL: -6400



1 Section E - Building 1C East Elevation
DA8.001 1 : 250

- T/Plant
SSL: 54700
- Plant Level
SSL: 50050
- Level 13
SSL: 46900
- Level 12
SSL: 43850
- Level 11
SSL: 40750
- Level 10
SSL: 37600
- Level 09
SSL: 34600
- Level 08
SSL: 31600
- Level 07
SSL: 28600
- Level 06
SSL: 25600
- Level 05
SSL: 22600
- Level 04
SSL: 19600
- Level 03
SSL: 16600
- Level 02
SSL: 13600
- Level 01
SSL: 10600
- Level 00
- Level B0
SSL: 1800
- Level B1
SSL: -1000
- Level B2
SSL: -3700
- Level B3
SSL: -6400



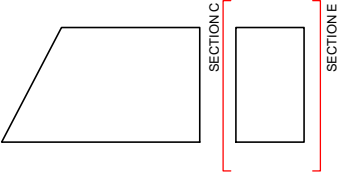
2 Section C - Building 1C West Elevation
DA8.001 1 : 250

Check all dimensions and site conditions prior to commencement of any work, the purchase or ordering of any materials, fittings, plant, services or equipment and the preparation of shop drawings and or the fabrication of any components.

Do not scale drawings - refer to figured dimensions only. Any discrepancies shall immediately be referred to the architect for clarification.

All drawings may not be reproduced or distributed without prior permission from the architect.

KEY PLAN:



FACADE LEGEND:

1. ALUMINIUM WINDOW SYSTEM
2. PAINTED SHEET LIGHTWEIGHT PANELS
3. ALUMINIUM LOUVRES
4. CONCRETE SPANDRELS
5. METAL FRAMED BALUSTRADE
6. TIMBER LOUVRES
7. TIMBER CLADDING
8. METAL CANOPY

B	11.11.11	Roof & Canopy Amended	DL	MA
A	07.02.11	Project Application	AW	MA
Revision	Date	Description	Initial	Checked



Linc
Discovery Point, Wolli Creek

Section E - Linc Tower East Elevation
Section C - Building 1C East Elevation

Status	PLANNING			
Scale	1 : 250	@ A1	1:500	@A3
Drawn	AW	Checked	MP	
Project No.	S11191A			
Plot Date	14/11/2011 12:00:45 PM			
Plot File	C:\Temp\ARCH\85-DP1_LAO\Drawings\DWG			

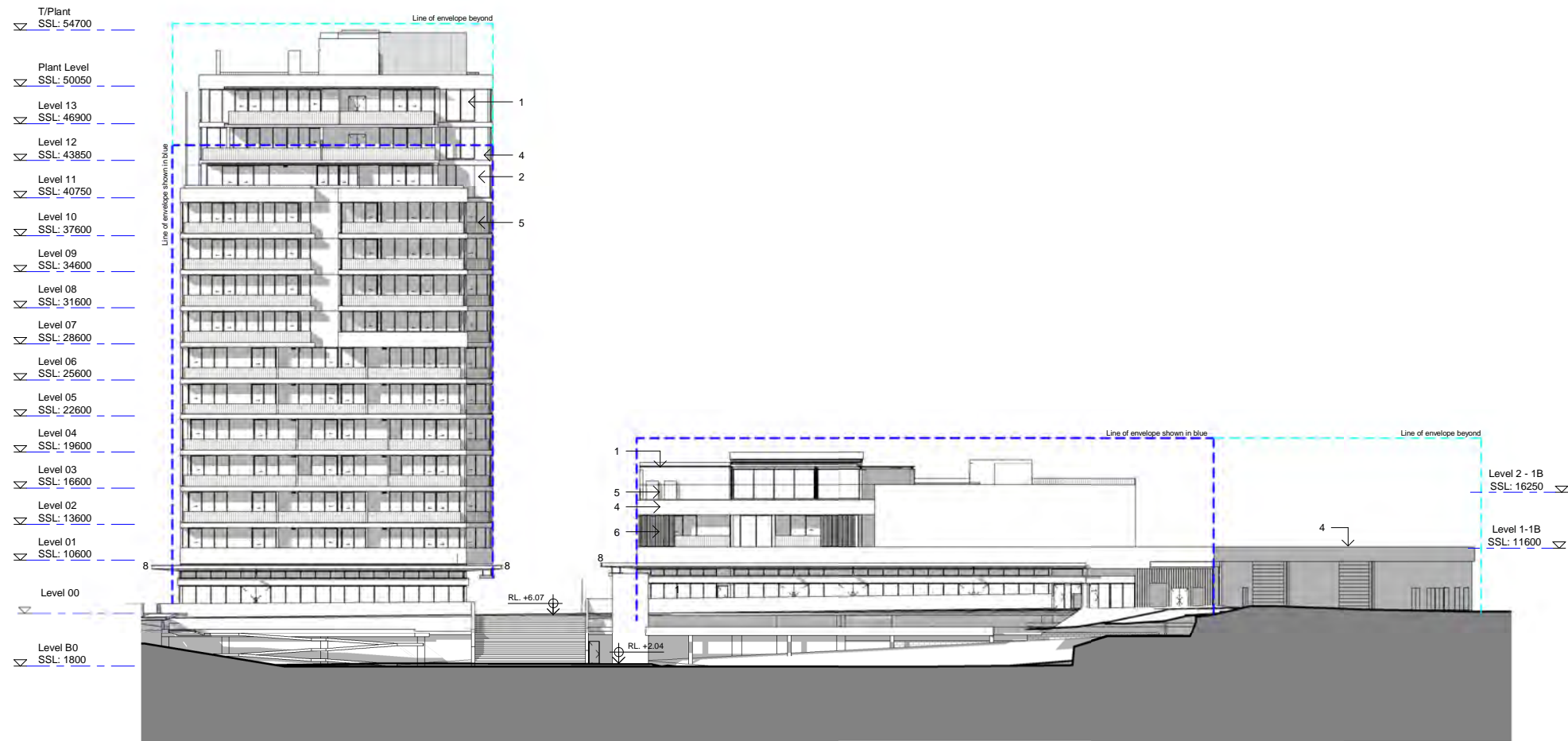
Drawing no.	Revision
DA8.001	B

Melbourne 1 Nicholson Street
Melbourne VIC 3000 Australia
T 03 8664 6200 F 03 8664 6300
email mel@batesmart.com.au
http://www.batesmart.com.au

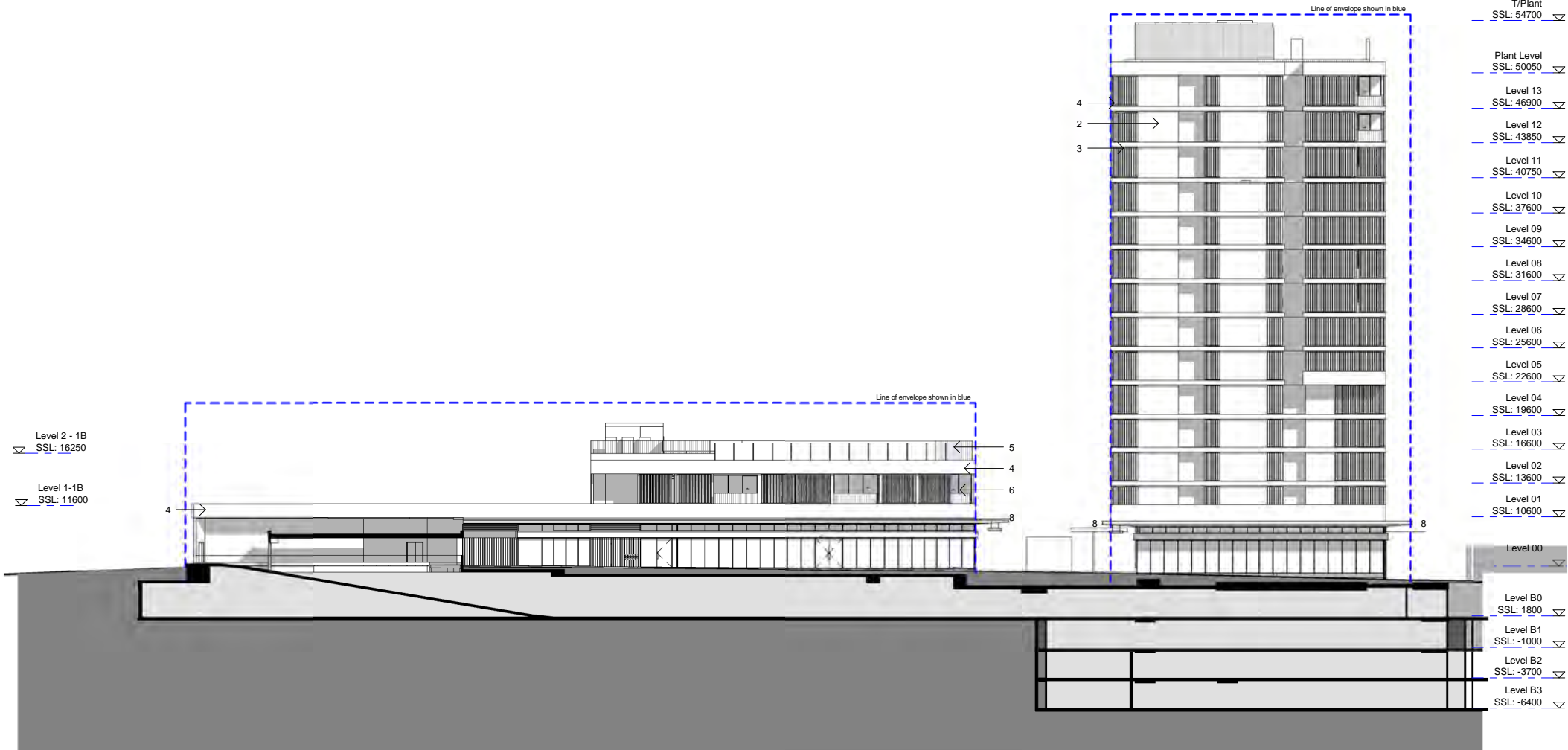
Sydney 1/243 Liverpool Street
East Sydney NSW 2010 Australia
T 02 8354 5100 F 02 8354 5199
email syd@batesmart.com.au
http://www.batesmart.com.au

Bates Smart Pty Ltd ABN 70 004 999 400

BATESSMART™



1 North Elevation
DAB.002 1 : 250

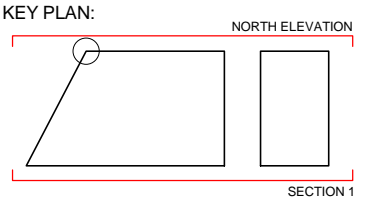


2 Section 1- Buildings 1B & 1C South Elevation
DAB.002 1 : 250

Check all dimensions and site conditions prior to commencement of any work, the purchase or ordering of any materials, fittings, plant, services or equipment and the preparation of shop drawings and or the fabrication of any components.

Do not scale drawings - refer to figured dimensions only. Any discrepancies shall immediately be referred to the architect for clarification.

All drawings may not be reproduced or distributed without prior permission from the architect.



- FACADE LEGEND:
1. ALUMINIUM WINDOW SYSTEM
 2. PAINTED SHEET LIGHTWEIGHT PANELS
 3. ALUMINIUM LOUVRES
 4. CONCRETE SPANDRELS
 5. METAL FRAMED BALUSTRADE
 6. TIMBER LOUVRES
 7. TIMBER CLADDING
 8. METAL CANOPY

B	11.11.11	Roof & Canopy Amended	DL	MA
A	07.02.11	Project Application	AW	MA
Revision	Date	Description	Initial	Checked



Linc
Discovery Point, Wolli Creek
Section
North Elevation & Section 1 - Building 1B & 1C South Elevation

Status	PLANNING
Scale	1 : 250 @ A1 1:500 @ A3
Drawn	AW Checked MP
Project No.	S11191A
Plot Date	14/11/2011 11:48:13 AM
Plot File	C:\Temp\ARCH\SS-OP1_LAO\Recovery\JAT

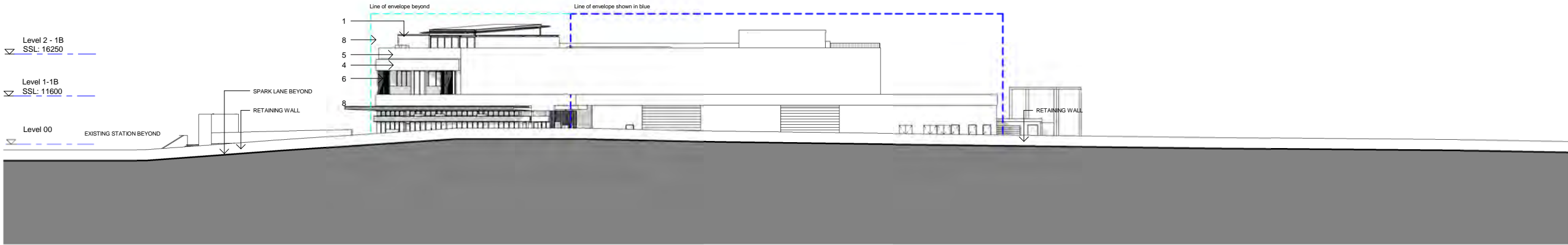
Drawing no. DA8.002 Revision B

Melbourne 1 Nicholson Street
Melbourne VIC 3000 Australia
T 03 8664 6200 F 03 8664 6300
email mel@batesmart.com.au
http://www.batesmart.com.au

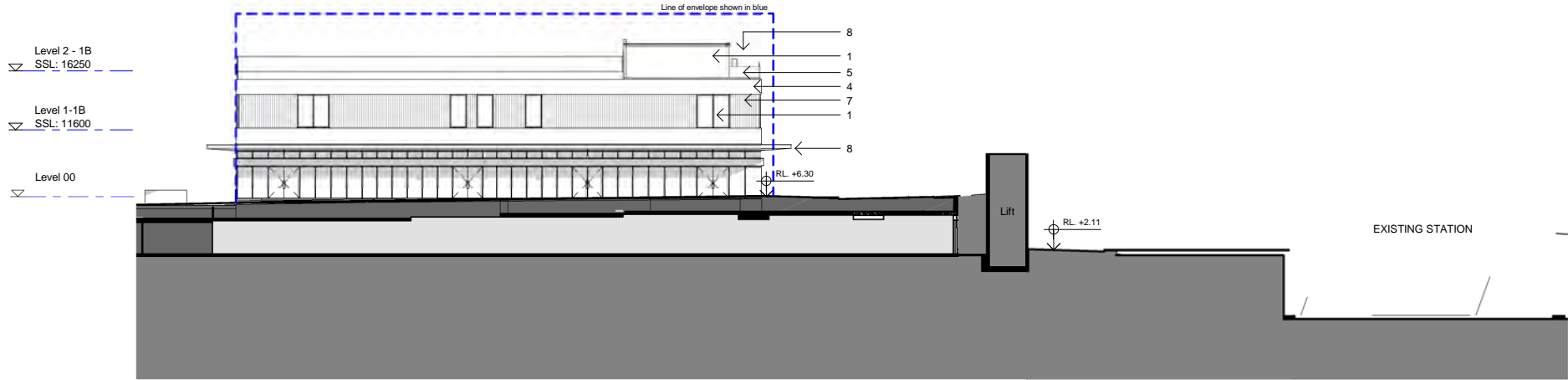
Sydney 1/243 Liverpool Street
East Sydney NSW 2010 Australia
T 02 8354 5100 F 02 8354 5199
email syd@batesmart.com.au
http://www.batesmart.com.au

Bates Smart Pty Ltd ABN 70 004 999 400

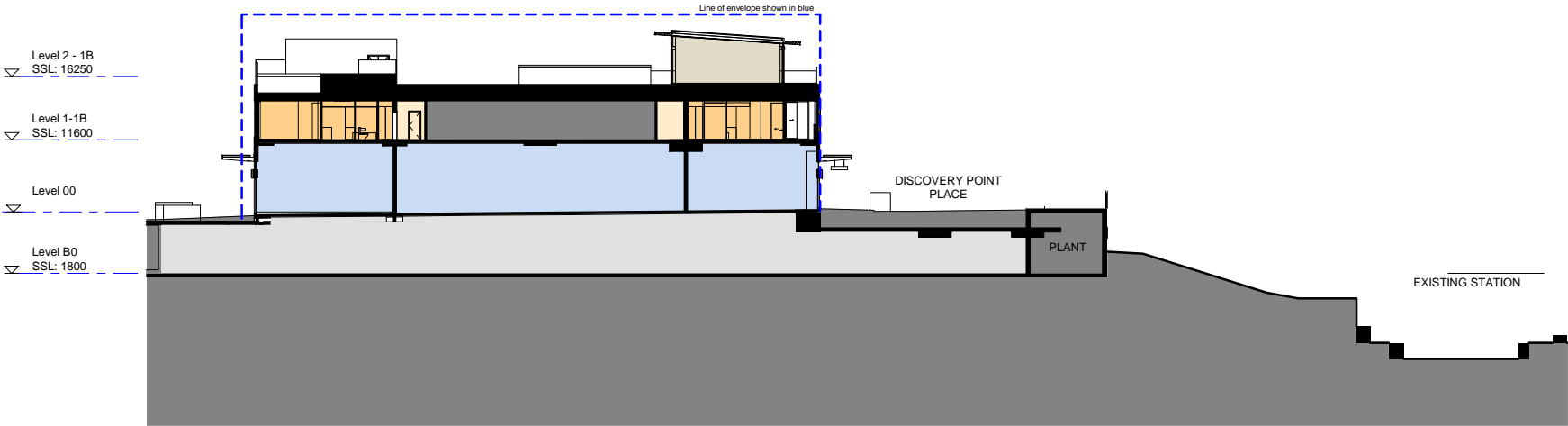
BATESSMART™



1 West Elevation
1 : 250



2 Section B - Building 1B East Elevation
1 : 250



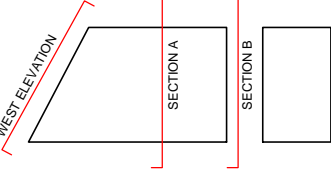
3 Section A
1 : 250

Check all dimensions and site conditions prior to commencement of any work, the purchase or ordering of any materials, fittings, plant, services or equipment and the preparation of shop drawings and or the fabrication of any components.

Do not scale drawings - refer to figured dimensions only. Any discrepancies shall immediately be referred to the architect for clarification.

All drawings may not be reproduced or distributed without prior permission from the architect.

KEY PLAN:



FACADE LEGEND:

1. ALUMINIUM WINDOW SYSTEM
2. PAINTED SHEET LIGHTWEIGHT PANELS
3. ALUMINIUM LOUVRES
4. CONCRETE SPANDRELS
5. METAL FRAMED BALUSTRADE
6. TIMBER LOUVRES
7. TIMBER CLADDING
8. METAL CANOPY

COLOUR LEGEND:

- 2B
- RESIDENTIAL FOYER
- GYM & POOL AMENITIES
- RETAIL
- CORE

B	11.11.11	Interface with Bldg 4 Amended	DL	MA
A	07.02.11	Project Application	AW	MA
Revision	Date	Description	Initial	Checked



Linc Discovery Point, Wolli Creek

Section West Elevation, Section B - Building 1B East Elevation & Section A

Status	PLANNING			
Scale	1 : 250	@ A1	1:500	@ A3
Drawn	AW	Checked	MP	
Project No.	S11191A			
Plot Date	14/11/2011 11:48:21 AM			
Plot File	C:\Temp\ARCH\SS-OP1_LAD\Raceway\jnt			

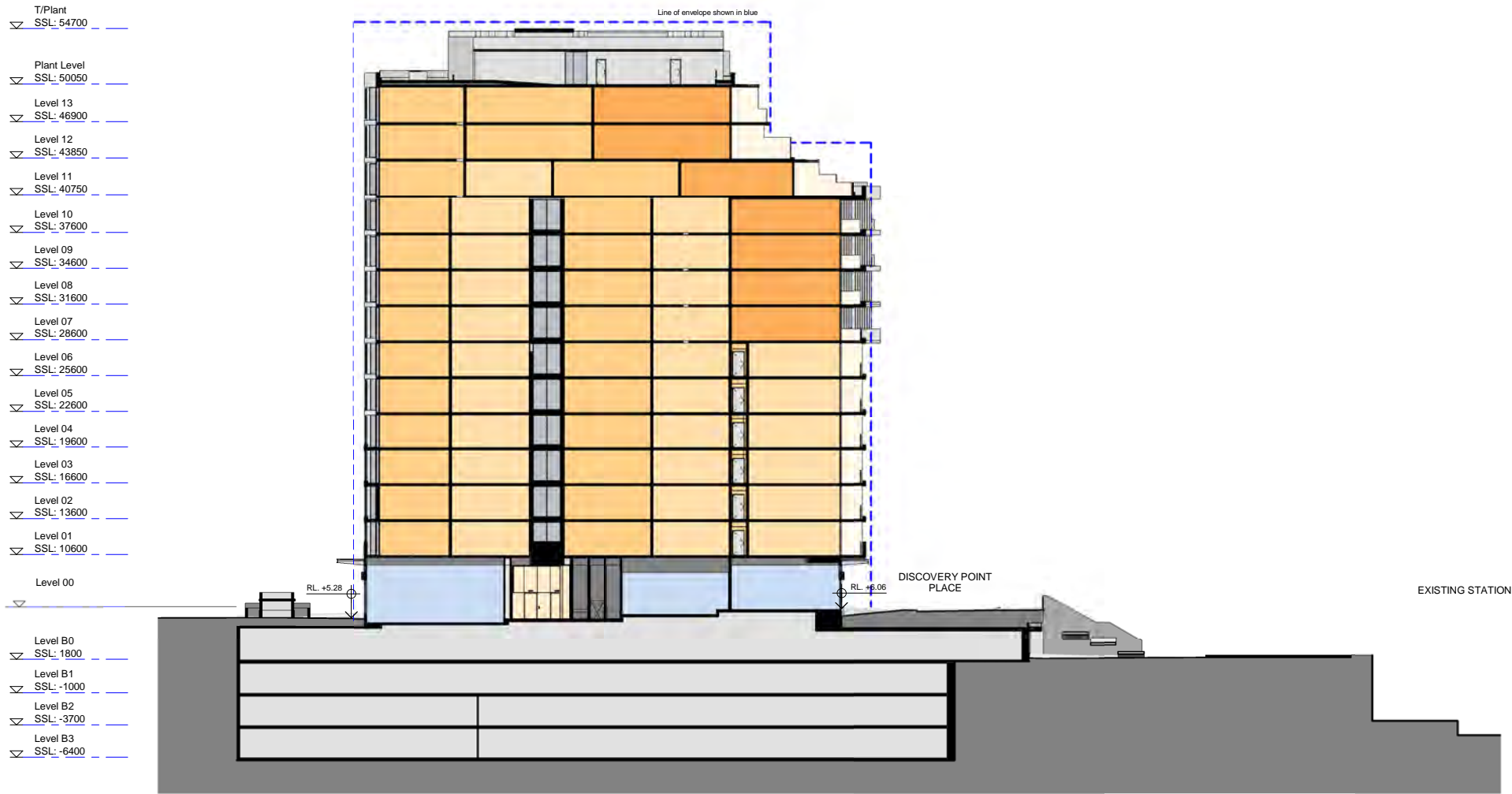
Drawing no.	Revision
DA8.003	B

Melbourne 1 Nicholson Street
Melbourne VIC 3000 Australia
T 03 8664 6200 F 03 8664 6300
email mel@batesmart.com.au
http://www.batesmart.com.au

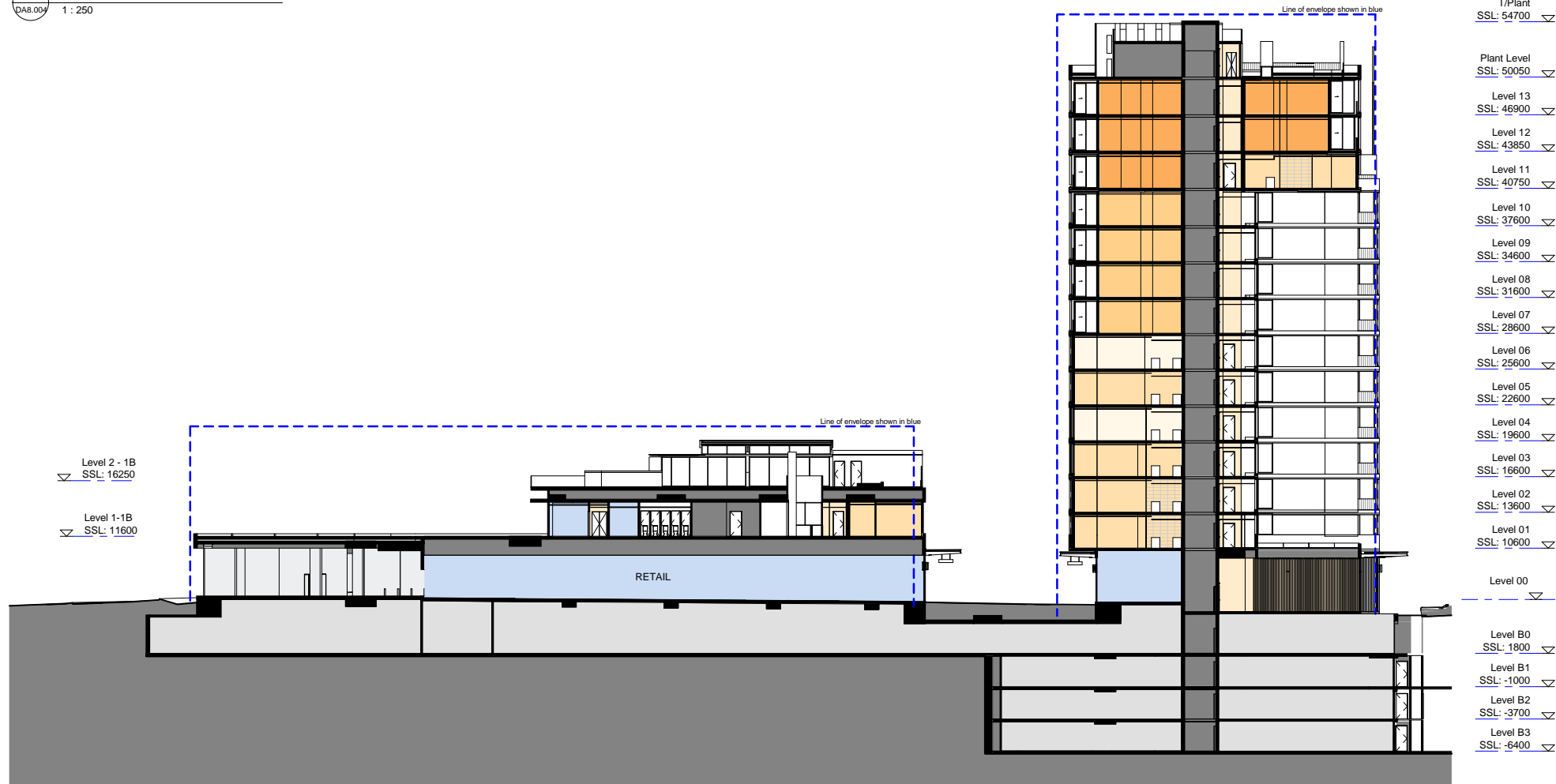
Sydney 1/243 Liverpool Street
East Sydney NSW 2010 Australia
T 02 8354 5100 F 02 8354 5199
email syd@batesmart.com.au
http://www.batesmart.com.au

Bates Smart Pty Ltd ABN 70 004 999 400

BATESSMART™



1 Section D
DAS.004 1 : 250



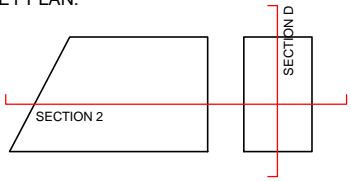
2 Section 2
DAS.004 1 : 250

Check all dimensions and site conditions prior to commencement of any work, the purchase or ordering of any materials, fittings, plant, services or equipment and the preparation of shop drawings and or the fabrication of any components.

Do not scale drawings - refer to figured dimensions only. Any discrepancies shall immediately be referred to the architect for clarification.

All drawings may not be reproduced or distributed without prior permission from the architect.

KEY PLAN:



COLOUR LEGEND:

- 1B
- 2B
- 3B
- RESIDENTIAL FOYER
- BALCONY
- RETAIL
- CARPARK
- CORE
- EXISTING CARPARK

B	11.11.11	Roof Canopy & Interface with Bldg 4 Amended Project Application	DL	MA
A	07.02.11		AW	MA
Revision	Date	Description	Initial	Checked



Linc
Discovery Point, Wolli Creek

Section
Section D & Section 2

Status	PLANNING			
Scale	1 : 250	@ A1	1:500	@A3
Drawn	AW		Checked	MP
Project No.	S11191A			
Plot Date	14/11/2011 12:00:55 PM			
Plot File	C:\Temp\ARCH\BSS\DP1_LAO\B\Discovery\JAT			

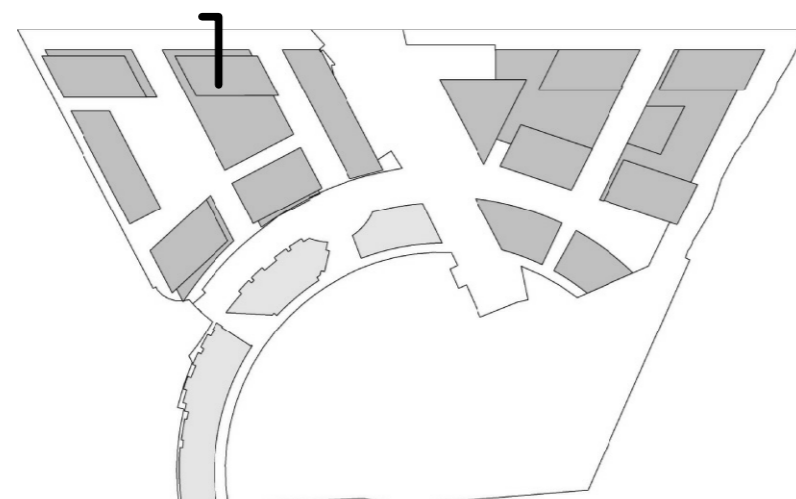
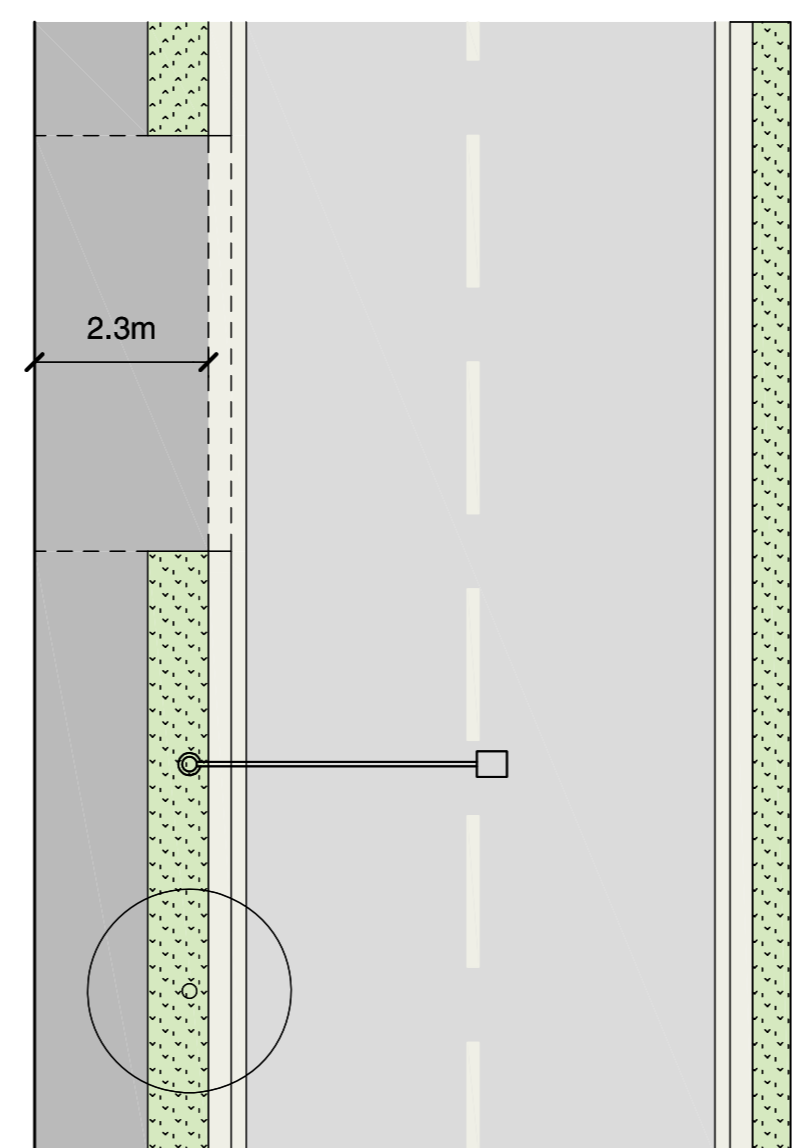
Drawing no.	Revision
DAS.004	B

Melbourne 1 Nicholson Street
Melbourne VIC 3000 Australia
T 03 8664 6200 F 03 8664 6300
email mel@batesmart.com.au
http://www.batesmart.com.au

Sydney 1/243 Liverpool Street
East Sydney NSW 2010 Australia
T 02 8354 5100 F 02 8354 5199
email syd@batesmart.com.au
http://www.batesmart.com.au

Bates Smart Pty Ltd ABN 70 004 999 400

BATESSMART™



THIS DRAWING HAS BEEN PREPARED IN ACCORDANCE WITH DISCOVERY POINT CONCEPT PLAN URBAN DESIGN GUIDELINES

Check all dimensions and site conditions prior to commencement of any work, the purchase or ordering of any materials, fittings, plant, services or equipment and the preparation of shop drawings and/or the fabrication of any components.

Do not scale drawings - refer to figured dimensions only. Any discrepancies shall immediately be referred to the architect for clarification.

All drawings may not be reproduced or distributed without prior permission from the architect.

BATESSMART™