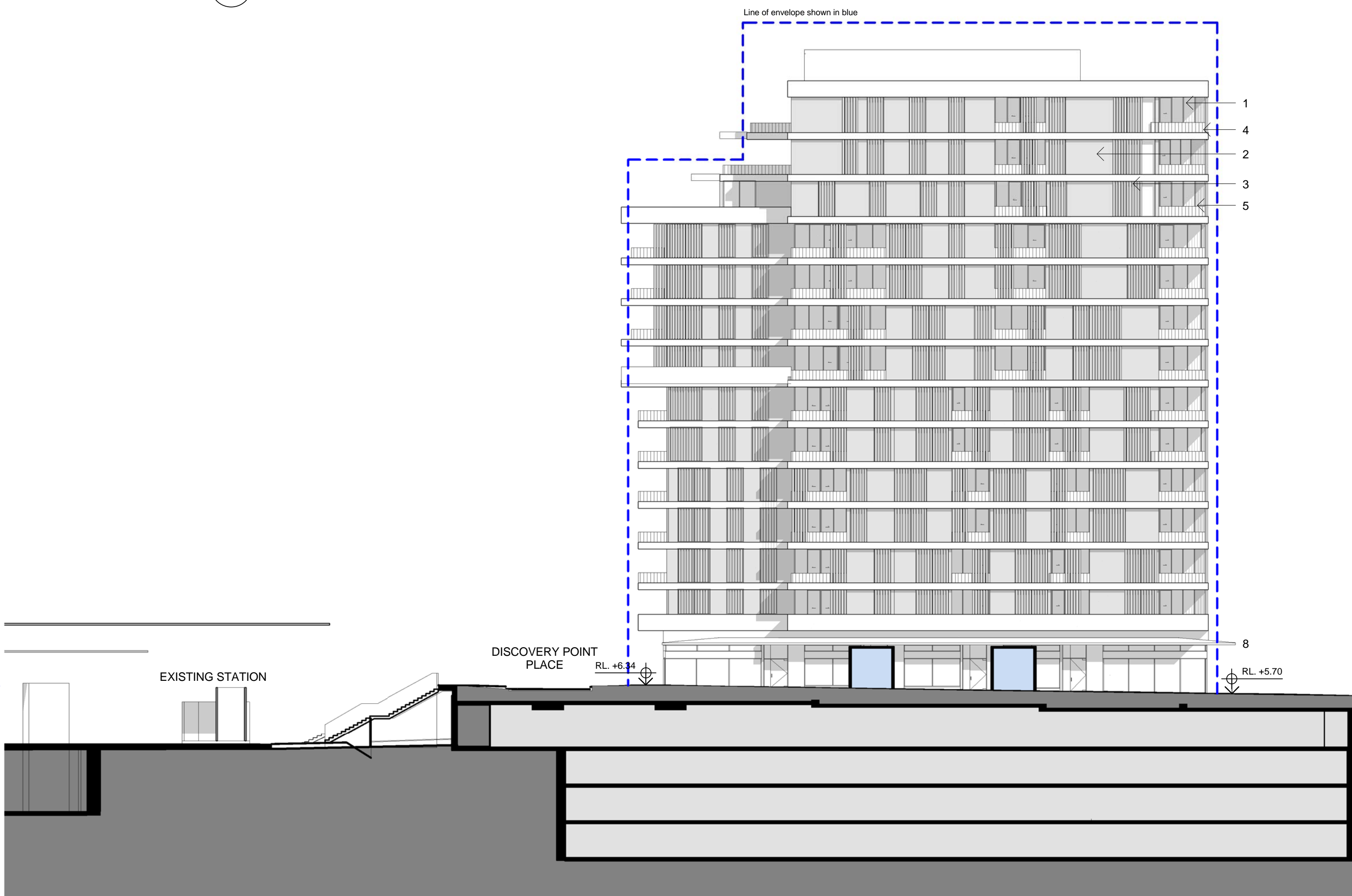


- T/Plant
54700
- Plant Level
50000
- Level 13
46900
- Level 12
43800
- Level 11
40700
- Level 10
37600
- Level 09
34600
- Level 08
31600
- Level 07
28600
- Level 06
25600
- Level 05
22600
- Level 04
19600
- Level 03
16600
- Level 02
13600
- Level 01
10600
- Level 00
- Level B0
1800
- Level B1
-1000
- Level B2
-3700
- Level B3
-6400



1 Section E - Building 1C East Elevation
1 : 250

- T/Plant
54700
- Plant Level
50000
- Level 13
46900
- Level 12
43800
- Level 11
40700
- Level 10
37600
- Level 09
34600
- Level 08
31600
- Level 07
28600
- Level 06
25600
- Level 05
22600
- Level 04
19600
- Level 03
16600
- Level 02
13600
- Level 01
10600
- Level 00
- Level B0
1800
- Level B1
-1000
- Level B2
-3700
- Level B3
-6400



2 Section C - Building 1C West Elevation
1 : 250

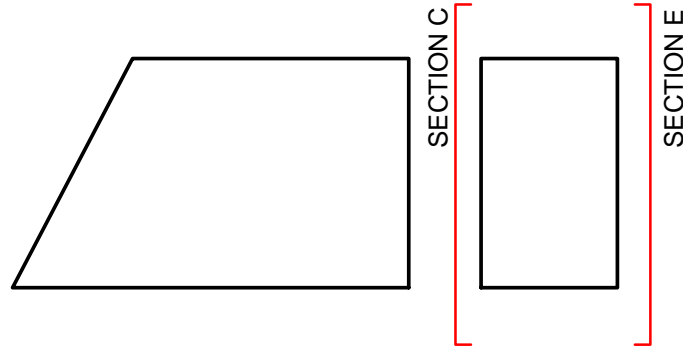
THIS DRAWING HAS BEEN PREPARED IN ACCORDANCE WITH
DISCOVERY POINT CONCEPT PLAN URBAN DESIGN GUIDELINES

Check all dimensions and site conditions prior to commencement of any work, the
purchase or ordering of any materials, fittings, plant, services or equipment and the
preparation of shop drawings and or the fabrication of any components.

Do not scale drawings - refer to figured dimensions only. Any discrepancies shall
immediately be referred to the architect for clarification.

All drawings may not be reproduced or distributed without prior permission from the
architect.

KEY PLAN:



FACADE LEGEND:

1. ALUMINIUM WINDOW SYSTEM
2. PAINTED SHEET LIGHTWEIGHT PANELS
3. ALUMINIUM LOUVRES
4. CONCRETE SPANDRELS
5. METAL FRAMED BALUSTRADE
6. TIMBER LOUVRES
7. TIMBER CLADDING
8. METAL CANOPY
9. TIMBER HOARDING TO BE
REPLACED BY BUILDING 4 FACADE IN FUTURE

A	07.02.11	Project Application	AW	MA
Revision	Date	Description	Initial	Checked



Discovery Point, Wolli Creek
Stage 1

Section E - Building 1C East Elevation
Section C - Building 1C East Elevation

Status	PLANNING			
Scale	1 : 250	@ A1	1:500	@A3
Drawn	AW	Checked	MA	
Project No.	S11191A			
Plot Date	7/02/2011 5:06:53 PM			
Plot File	C:\TEMP\Arch-BS-DP1-101210_TOS(Recovery).nvt			

Drawing no.	Revision
DA8.001	A

Sydney 1/243 Liverpool Street
East Sydney NSW 2010 Australia
T 02 8354 5100 F 02 8354 5199
email: syd@batesmart.com.au
http://www.batesmart.com.au

Melbourne 1 Nicholson Street
Melbourne VIC 3000 Australia
T 03 8664 6200 F 03 8664 6300
email: mel@batesmart.com.au
http://www.batesmart.com.au

Bates Smart Pty Ltd ABN 70 004 999 400

BATESSMART™