

NSW GOVERNMENT Planning

Issued under the Environmental Planning and Assessment Act 1979

Approved Section 75W Modification Application

No. MP 10-0027 MOD1 granted on the 24 JULY 2012

in respect to MP 10-0027

Signed [Signature]

Scale 1:200

Drawn [Signature] Checked [Signature]

Project No. S11202 Sheet No. 1 of 12

Status DA

Plot Date 12/3/2012 2:28:19 PM

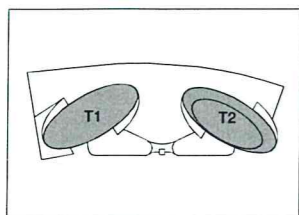
Plot File S:\1120-11299\11202_billbergis_homebush\00_es\cot\plot...

Drawing No. DA02.103[E]

Bates Smart Pty Ltd ABN 70 004 599 400

Sydney 1243 Liverpool Street East Sydney NSW 2010 Australia T 02 8354 5100 F 02 8354 5199 email syd@batesmart.com.au http://www.batesmart.com.au

Melbourne 1 Nicholson Street Melbourne VIC 3000 Australia T 03 8664 6200 F 03 8664 6300 email melb@batesmart.com.au http://www.batesmart.com.au



Revision E - Section 75W Amendments

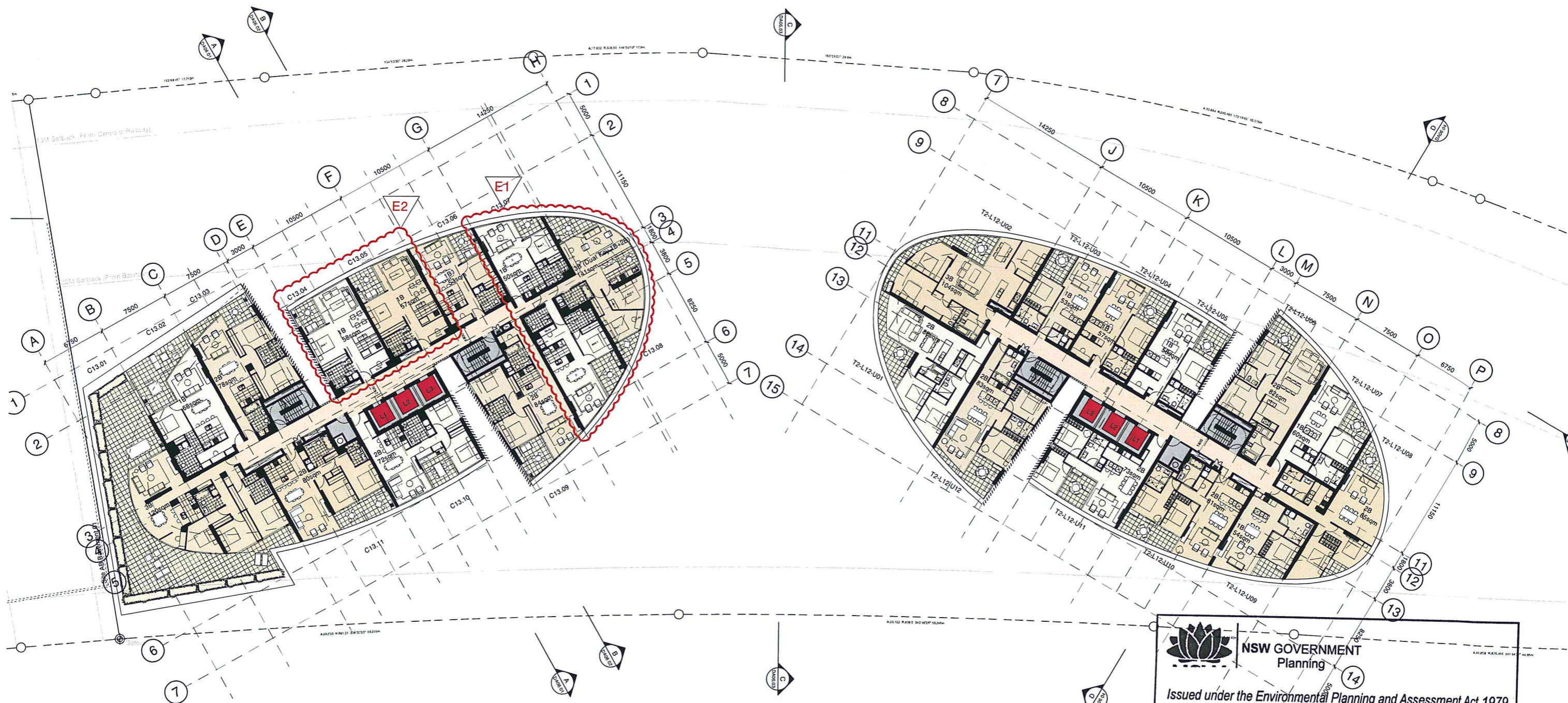
1 Four scooters have been converted to two disabled spaces to accommodate increase in total accessible apartments numbers (additional 2, from 55 to 61)

Revision	Date	Description	Initial	Checked
E	12/03/12	Section 75W Submission	PL	MD
D	04/11/11	Revised Design following SOPA comments	JC	MD
B	09/09/11	Revised Design following SOPA comments	MD	MD
A	06/04/11	DA Submission	JL	MD

Site 3
Sydney Olympic Park
Plan
Basement 001

Check all dimensions and site conditions prior to commencement of any work, the purchase or selling of any materials, fittings, plant, services or equipment and the preparation of shop drawings and/or the fabrication of any components. Do not scale drawings - refer to figure dimensions only. Any discrepancies shall immediately be referred to the architect for clarification. All drawings may not be reproduced or distributed without prior permission from the architect.





NSW GOVERNMENT
Planning

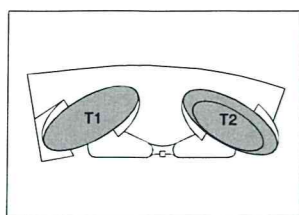
Issued under the Environmental Planning and Assessment Act 1979
 Approved Section 75W Modification Application
 No. ~~MP 10-007.7 mod~~ granted on the 24 JULY 2012
 in respect to MP 10-0027
 Signed..... *[Signature]*

Scale: 1:200@A1 1:400@A3
 Sheet No. 2 of 12
 Project No. S11202
 Status: DA
 Plot Date: 12/3/2012 2:28:32 PM
 Plot File: S:\1120-11299\11202_bilberga_nomebush\00_n\res\plot...
 Drawing No. [Revision]
 DA02.212[E]

Sydney 1/243 Liverpool Street
 East Sydney NSW 2010 Australia
 T 02 8554 5100 F 02 8554 5199
 email syd@batesmart.com.au
 http://www.batesmart.com.au

Melbourne 1 Nicholson Street
 Melbourne VIC 3000 Australia
 T 03 8564 6200 F 03 8564 6300
 email mel@batesmart.com.au
 http://www.batesmart.com.au

Bates Smart Pty Ltd ABN 70 004 595 400



Revision E - Section 75W Amendments

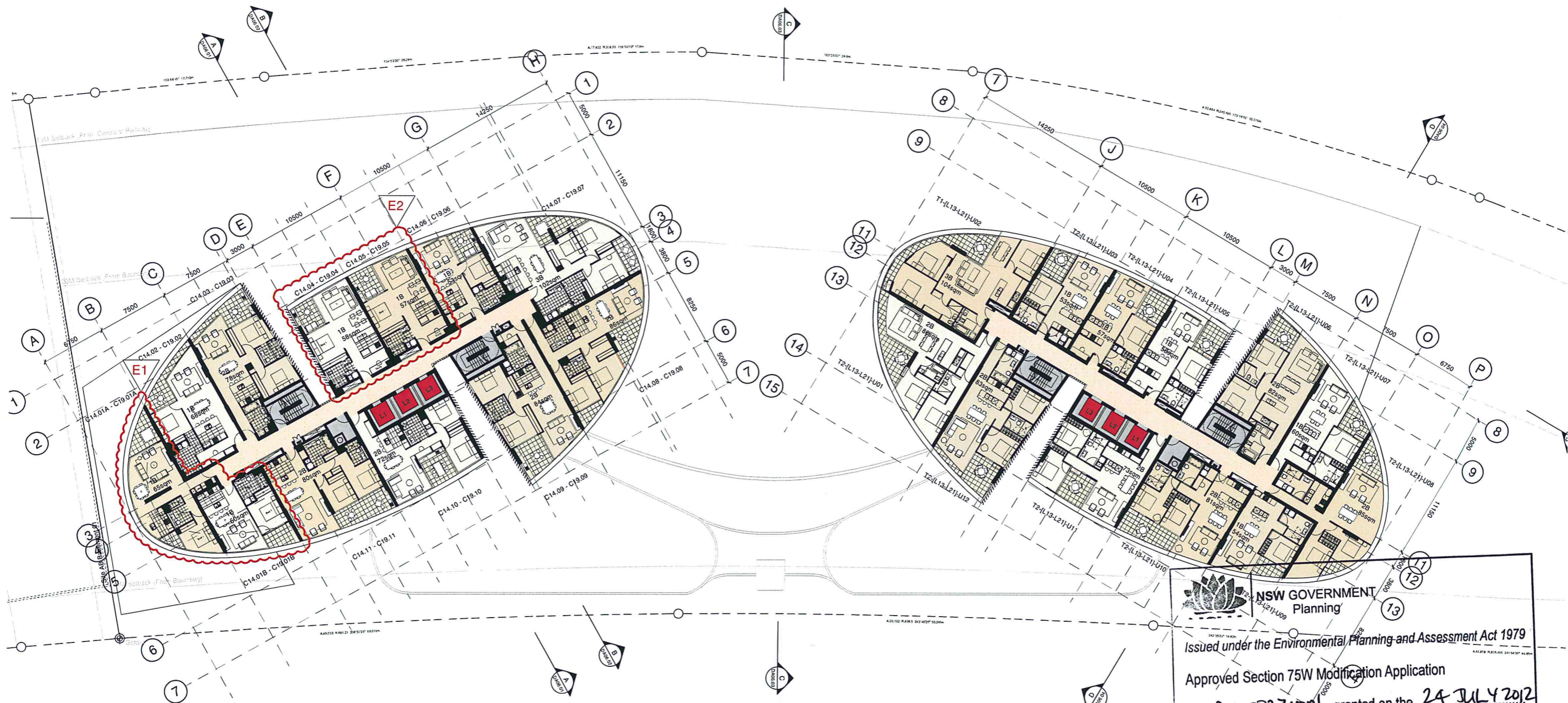
1. Change of apartment mix from one 3-Bed and one 2-Bed (C13.07 & C13.08) to one 1-Bed and one 3-Bed Dual Key (1-Bed+2-Bed) (C13.07 & C13.08).
2. Apartments C13.04 & C13.05 have been allocated as admissible units.


Revision	Date	Description	Initial	Checked
E	12/03/12	Section 75W Submission	PL	MD
D	04/11/11	Revised Design following SOPA comments	JC	MD
A	06/04/11	DA Submission	JL	MD

Site 3
 Sydney Olympic Park
 Plan
 Level 12

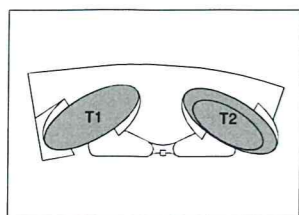
Check all dimensions and site conditions prior to commencement of any work, the purchase or ordering of any materials, fittings, plant, services or equipment and the preparation of shop drawings and/or the fabrication of any components.
 Do not scale drawings - refer to figured dimensions only. Any discrepancies shall immediately be referred to the architect for clarification.
 All drawings may not be reproduced or distributed without prior permission from the architect.






NSW GOVERNMENT
 Planning

Issued under the Environmental Planning and Assessment Act 1979
 Approved Section 75W Modification Application
 No. MP10.0027 granted on the 24 JULY 2012
 in respect to MP 10.0027
 Signed [Signature]
 Sheet No. 3 of 12



Revision E - Section 75W Amendments
 1. Change of apartment mix from one 3-Bed (C14.01-C22.01) to two 1-Bed (C14.01A-C22.01A & C14.01B-C22.01B).
 2. Apartments C14.04-C22.04 & C14.05-C22.05 have been allocated as adaptable units.

Revision	Date	Description	Initial	Checked
E	12/03/12	Section 75W Submission	PL	MD
D	04/11/11	Revised Design following SOPA comments	JC	MD
A	06/04/11	DA Submission	JL	MD

Site 3
Sydney Olympic Park
Plan
Level 13-18

Check all dimensions and site conditions prior to commencement of any work, the purchase or ordering of any materials, (sign, plant, services or equipment) and the preparation of shop drawings and/or the fabrication of any components.
 Do not scale drawings - refer to figure dimensions only. Any discrepancies shall immediately be referred to the architect for clarification.
 All drawings may not be reproduced or distributed without prior permission from the architect.

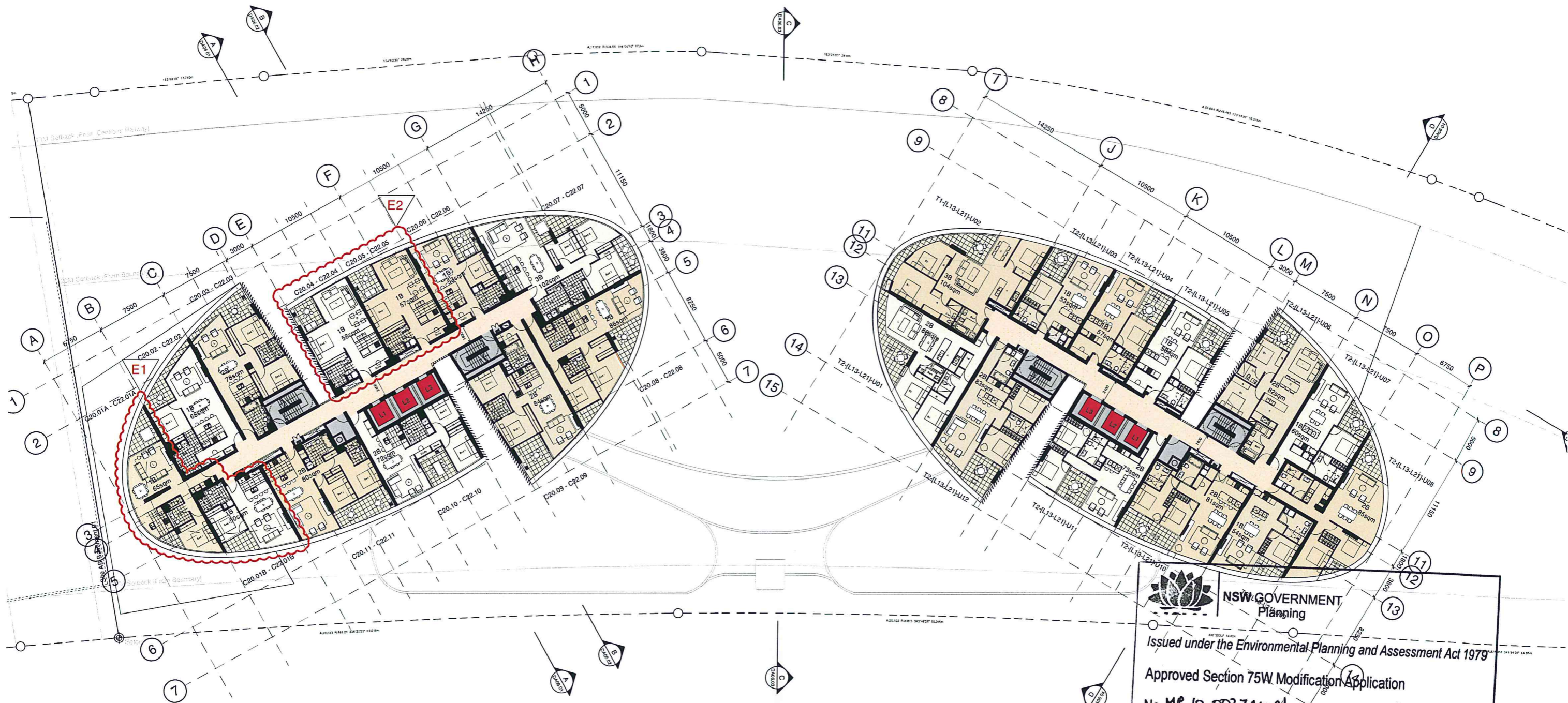
Scale: 1:200@A1, 1:400@A3
 Drawn: _____
 Project No: S11202
 Status: DA
 Plot Date: 12/3/2012 2:28:40 PM
 Plot File: S:\11200-11299\11202_billgeria_homebush\03_enfcaad\plots\T...
 Drawing No: DA02.213[E]



Sydney 1/243 Liverpool Street
 East Sydney NSW 2010 Australia
 T 02 8354 5100 F 02 8354 5199
 email syd@batesmart.com.au
 http://www.batesmart.com.au

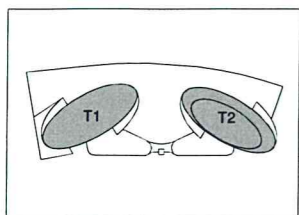
Melbourne 1 Nicholson Street
 Melbourne VIC 3000 Australia
 T 03 8664 6200 F 03 8664 6300
 email melb@batesmart.com.au
 http://www.batesmart.com.au

Bates Smart Pty Ltd ABN 70 004 599 400

BATESSMART




**NSW GOVERNMENT
Planning**
 Issued under the Environmental Planning and Assessment Act 1979
 Approved Section 75W Modification Application
 No. MP 10-0027 Mod 01 granted on the 24 JULY 2012
 in respect to MP 10-0027
 Signed: 
 Sheet No. 4 of 12



Revision E - Section 75W Amendments
 1. Change of apartment mix from one 3-Bed (C14.01-C22.01) to two 1-Bed (C14.01A-C22.01A & C14.01B-C22.01B).
 2. Apartments C14.04-C22.04 & C14.05-C22.05 have been allocated as adaptable units.

Revision	Date	Description	Initial	Checked
E	12/03/12	Section 75W Submission	PL	MD
D	04/11/11	Revised Design following SOPA comments	JC	MD
A	06/04/11	DA Submission	JE	MD

**Site 3
Sydney Olympic Park**
 Plan
 Level 19-21

Check all dimensions and site conditions prior to commencement of any work, the purchase or ordering of any materials, fit-out, plant, services or equipment and the preparation of shop drawings and/or the fabrication of any components.
 Do not scale drawings - refer to figured dimensions only. Any discrepancies shall immediately be referred to the architect for clarification.
 All drawings may not be reproduced or distributed without prior permission from the architect.

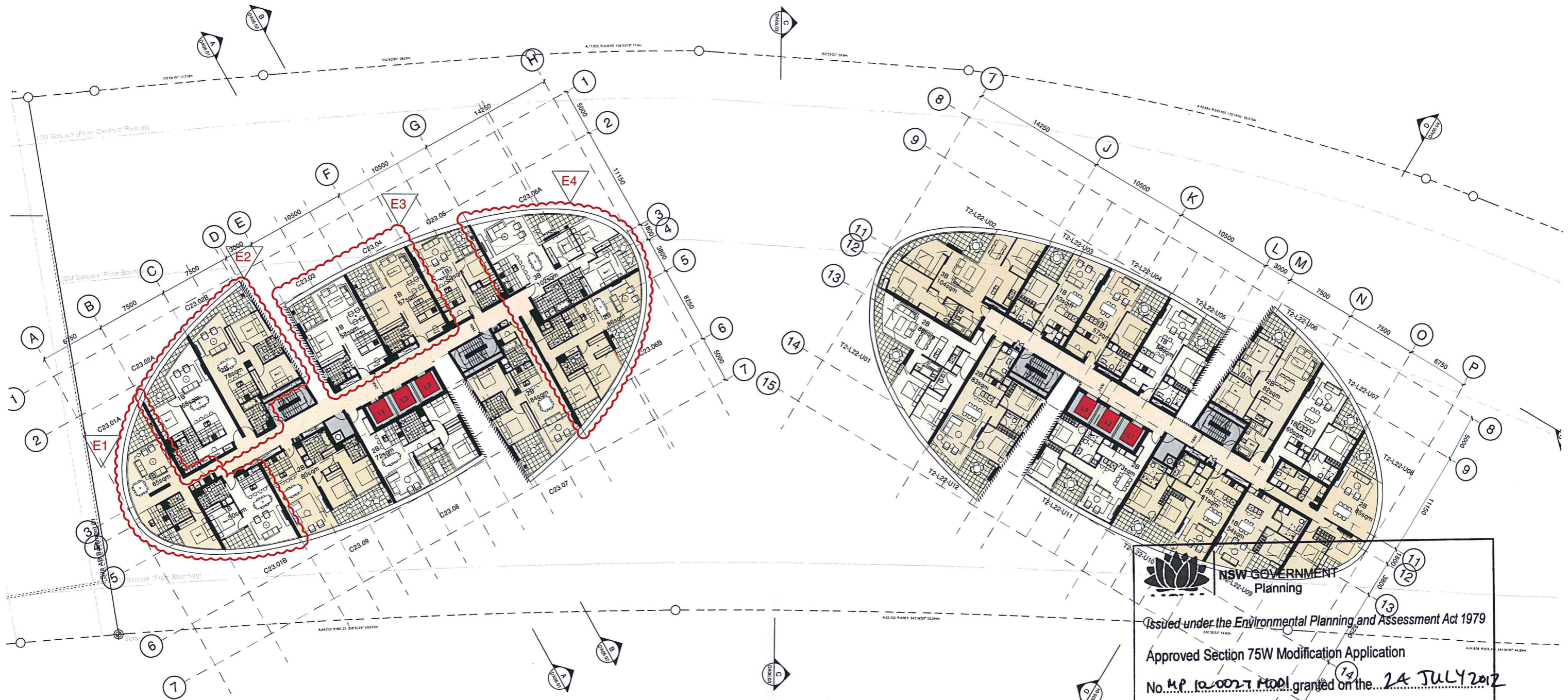
Scale: 1:200@A1, 1:400@A3
 Drawn: _____
 Project No.: S11202
 Status: DA
 Plot Date: 12/3/2012 2:28:49 PM
 Plot File: S:\11200-11299-s11202_billbergeria_homebush\03_eoicad\plots\T...
 Drawing No.: DA02.219[E]
 [Revision]


Sydney 172-23 Cramped Street
 East Sydney NSW 2010 Australia
 T 02 8354 5100 F 02 8354 5199
 email syd@batesmart.com.au
 http://www.batesmart.com.au

Bates Smart Pty Ltd ABN 70 004 599 400

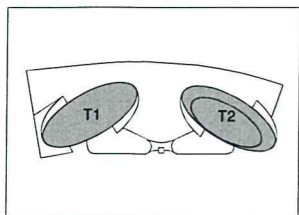
Melbourne 1 Nicholson Street
 Melbourne VIC 3000 Australia
 T 03 8664 6200 F 03 8664 6300
 email melb@batesmart.com.au
 http://www.batesmart.com.au






NSW GOVERNMENT
 Planning

Issued under the Environmental Planning and Assessment Act 1979
 Approved Section 75W Modification Application
 No. MP 10 0027 MOD granted on the 24 JULY 2012
 in respect to MP 10 0027
 Signed [Signature]
 Sheet No. 5 of 12



Revision E - Section 75W Amendments

- Change of apartment mix from one 3-Bed (C23.01) to two 1-Bed (C23.01A & C23.01B).
- Change of apartment mix from one 3-Bed (C23.02) to one 1-Bed (C23.02A) and one 2-Bed (C23.02B).
- Apartment C23.04 & C23.05 have been allocated as adaptable units.
- Change of apartment mix from one 4-Bed (C23.06) to one 2-Bed (C23.06B) and one 3-Bed (C23.06A).

Revision	Date	Description	Initial	Checked
E	12/03/12	Section 75W Submission	PL	MD
D	04/11/11	Revised Design following SOPA comments	JC	MD
A	06/04/11	DA Submission	JE	MD

Site 3
Sydney Olympic Park
Plan
Level 22

Check all dimensions and site conditions prior to commencement of any work, the purchase or ordering of any materials, fittings, plant, services or equipment and the preparation of shop drawings and/or the fabrication of any components.
 Do not scale drawings - refer to figured dimensions only. Any discrepancies shall immediately be referred to the architect for clarification.
 All drawings may not be reproduced or distributed without prior permission from the architect.

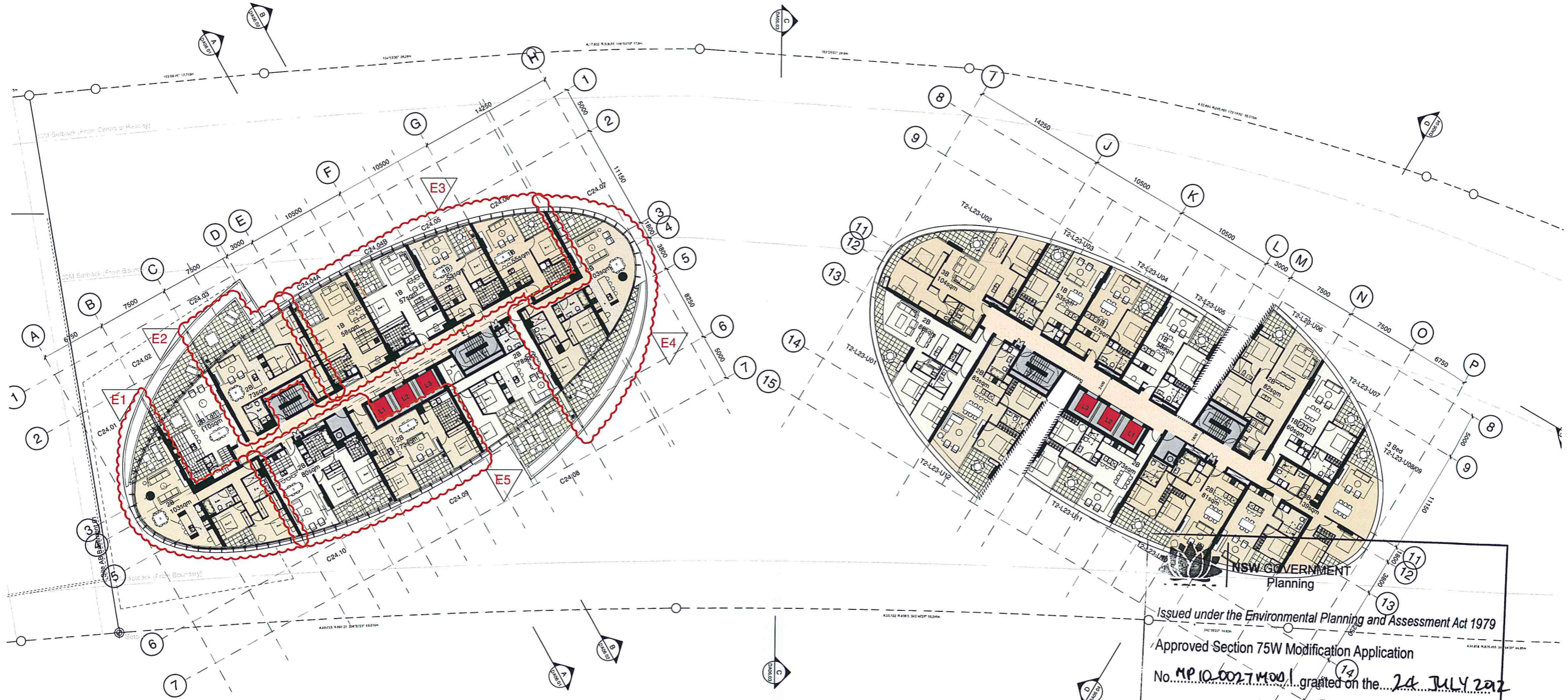
Scale: 1:200@A1, 1:400@A3
 Drawn: _____
 Project No.: S11202
 Status: DA
 Plot Date: 12/3/2012 2:28:58 PM
 Plot File: S:\11200-11299-s11202_billgergia_homebush\03_eoicad\plots\T...
 Drawing No.: DA02.222[E]
 [Revision]

Sydney 1/243 Liverpool Street
 East Sydney NSW 2010 Australia
 T 02 8354 5100 F 02 8354 5199
 email syd@batesmart.com.au
 http://www.batesmart.com.au

Melbourne 1 Nicholson Street
 Melbourne VIC 3000 Australia
 T 03 8664 6200 F 03 8664 6300
 email melb@batesmart.com.au
 http://www.batesmart.com.au

Bates Smart Pty Ltd ABN 70 004 599 400

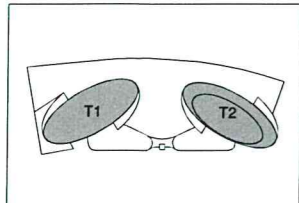




NSW GOVERNMENT
Planning

Issued under the Environmental Planning and Assessment Act 1979

Approved Section 75W Modification Application
No. MP 10-0027 MOD granted on the 24 JULY 2012
in respect to MP 10-0027
Signed [Signature]
Sheet No. 6 of 12



- Revision E - Section 75W Amendments**
1. One 3-Bed Lot (C25.01) has been modified to one 2-Bed single storey apartment (C24.01).
 2. One 3-Bed Lot (C25.03) has been modified to one 2-Bed single storey apartment (C24.03).
 3. One 2-Bed Lot and two 4-Bed Lots (C25.04, C25.05 & C25.06) have been modified to four 1-Bed single storey apartments (C24.04A, C24.04B, C24.05 & C24.06), including two units allocated as accessible units.
 4. One 3-Bed Lot (C25.07) has been modified to one 2-Bed single storey apartment (C24.07).
 5. Change of apartment mix from one 1-Bed and one 3-Bed (C25.09 & C25.10) to two 2-Bed (C24.09 & C24.10).

Revision	Date	Description	Initial	Checked
E	12/03/12	Section 75W Submission	PL	MD
D	04/11/11	Revised Design following SOPA comments	JC	MD
B	09/09/11	Revised DA Issue (Units T2-L23-08 + T2-L23-09 combined)	JC	MD
A	06/04/11	DA Submission	JL	MD

**Site 3
Sydney Olympic Park
Plan
Level 23**

Check all dimensions and site conditions prior to commencement of any work, the purchase or siting of any materials, fittings, plant, services or equipment and the preparation of shop drawings and/or the fabrication of any components.
Do not scale drawings - refer to Spaced dimensions only. Any discrepancies shall immediately be referred to the architect for clarification.
All drawings may not be reproduced or distributed without prior permission from the architect.

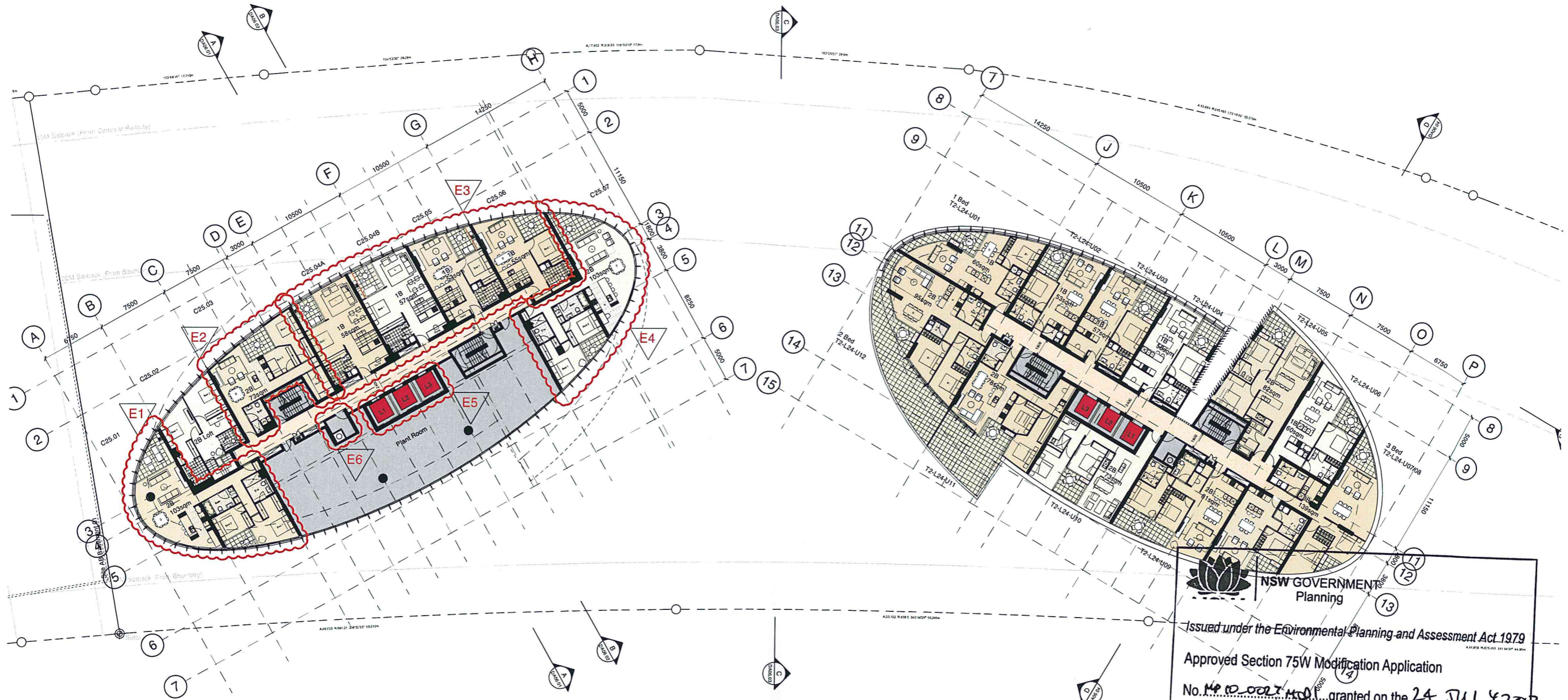
Scale: 1:200@A1, 1:400@A3
Drawn: _____
Project No.: S11202
Status: DA
Plot Date: 12/3/2012 2:29:10 PM
Plot File: S:\11200-11299-11202_billbergia_homebush\00_eo/cad/plots/E...
Drawing No.: DA02.223[E]
Revision: _____

Sydney 1/243 Liverpool Street
East Sydney NSW 2010 Australia
T 02 8354 5100 F 02 8354 5199
email syd@batesmart.com.au
http://www.batesmart.com.au

Melbourne 1 Nicholson Street
Melbourne VIC 3000 Australia
T 03 8664 6200 F 03 8664 6300
email melb@batesmart.com.au
http://www.batesmart.com.au

Bates Smart Pty Ltd ABN 70 004 599 400





NSW GOVERNMENT
 Planning

Issued under the Environmental Planning and Assessment Act 1979

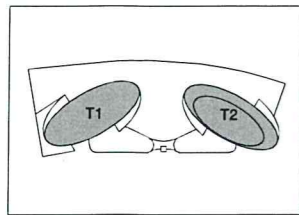
Approved Section 75W Modification Application

No. MP 10 0027 MOD granted on the 24 JULY 2012

in respect to MP 10 0027

Signed..... *[Signature]*

Sheet No. 7 of 12



- Revision E - Section 75W Amendments**
1. One 3-Bed Lot (C25.01) has been modified to one 2-Bed single storey apartment (C25.01).
 2. One 3-Bed Lot (C25.03) has been modified to one 2-Bed single storey apartment (C25.03).
 3. One 2-Bed Lot and two 4-Bed Lots (C25.04, C25.05 & C25.06) have been modified to four 1-Bed single storey apartments (C25.04A, C25.04B, C25.05 & C25.06), including two units allocated as accessible units.
 4. One 3-Bed Lot (C25.07) has been modified to one 2-Bed single storey apartment (C25.07).
 5. Lift access has been extended to serve Level 24 apartments.
 6. Garbage room has been added to serve Level 24 apartments.

Revision	Date	Description	Initial	Checked
E	12/03/12	Section 75W Submission	PL	MD
D	04/11/11	Revised Design following SOPA comments	JC	MD
B	09/09/11	Revised DA Issue	JC	MD
B		(Units T2-L24-01 Split into two units)		
B		(Units T2-L24-07 & 08 combined into one unit)		
A	06/04/11	DA Submission	JL	MD

**Site 3
 Sydney Olympic Park
 Plan
 Level 24**

Check all dimensions and site conditions prior to commencement of any work, the purchase or starting of any materials, fittings, plant, services or equipment and the preparation of shop drawings and/or the fabrication of any components.
 Do not scale drawings - refer to figured dimensions only. Any discrepancies shall immediately be referred to the architect for clarification.
 All drawings may not be reproduced or distributed without prior permission from the architect.

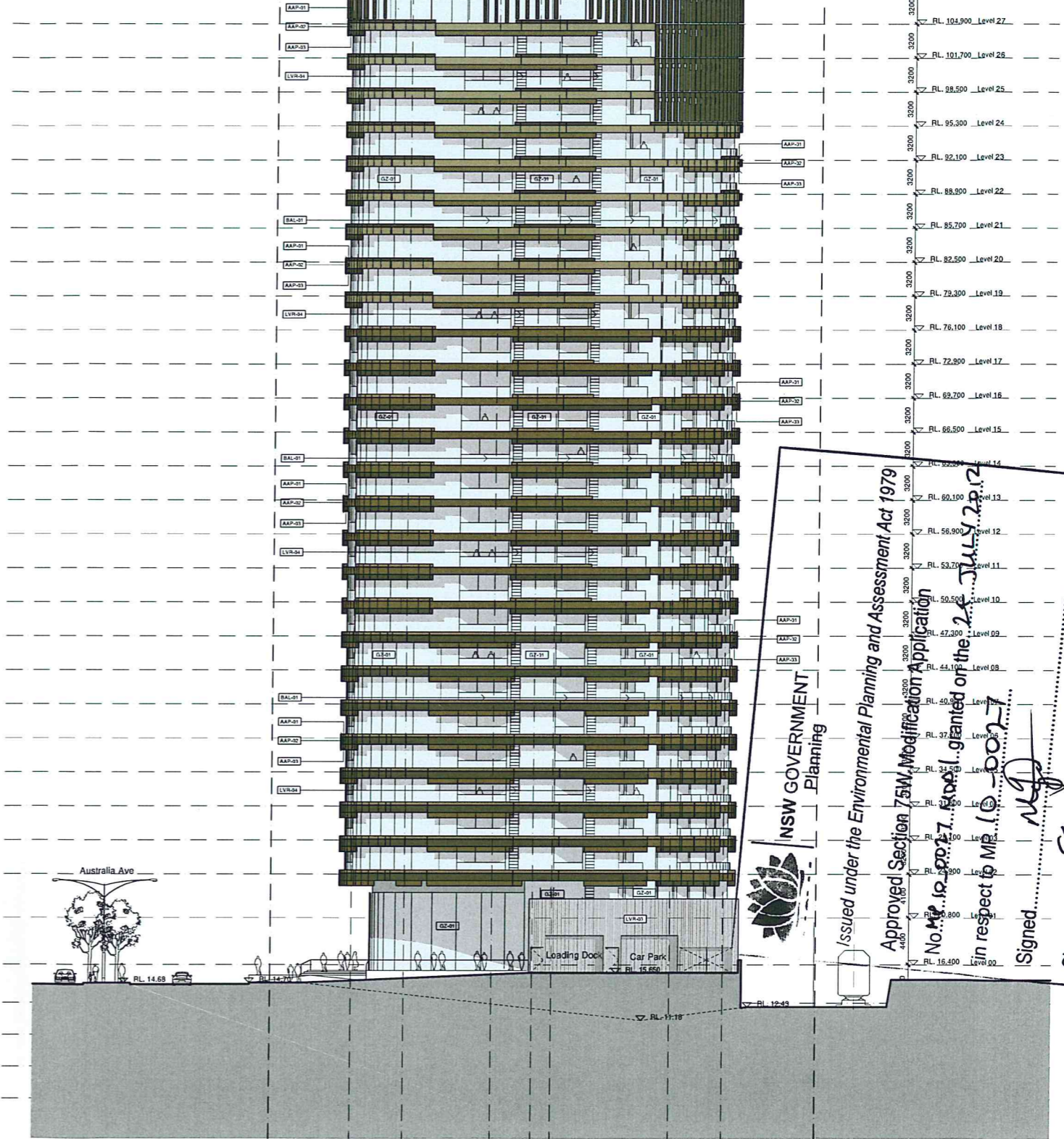
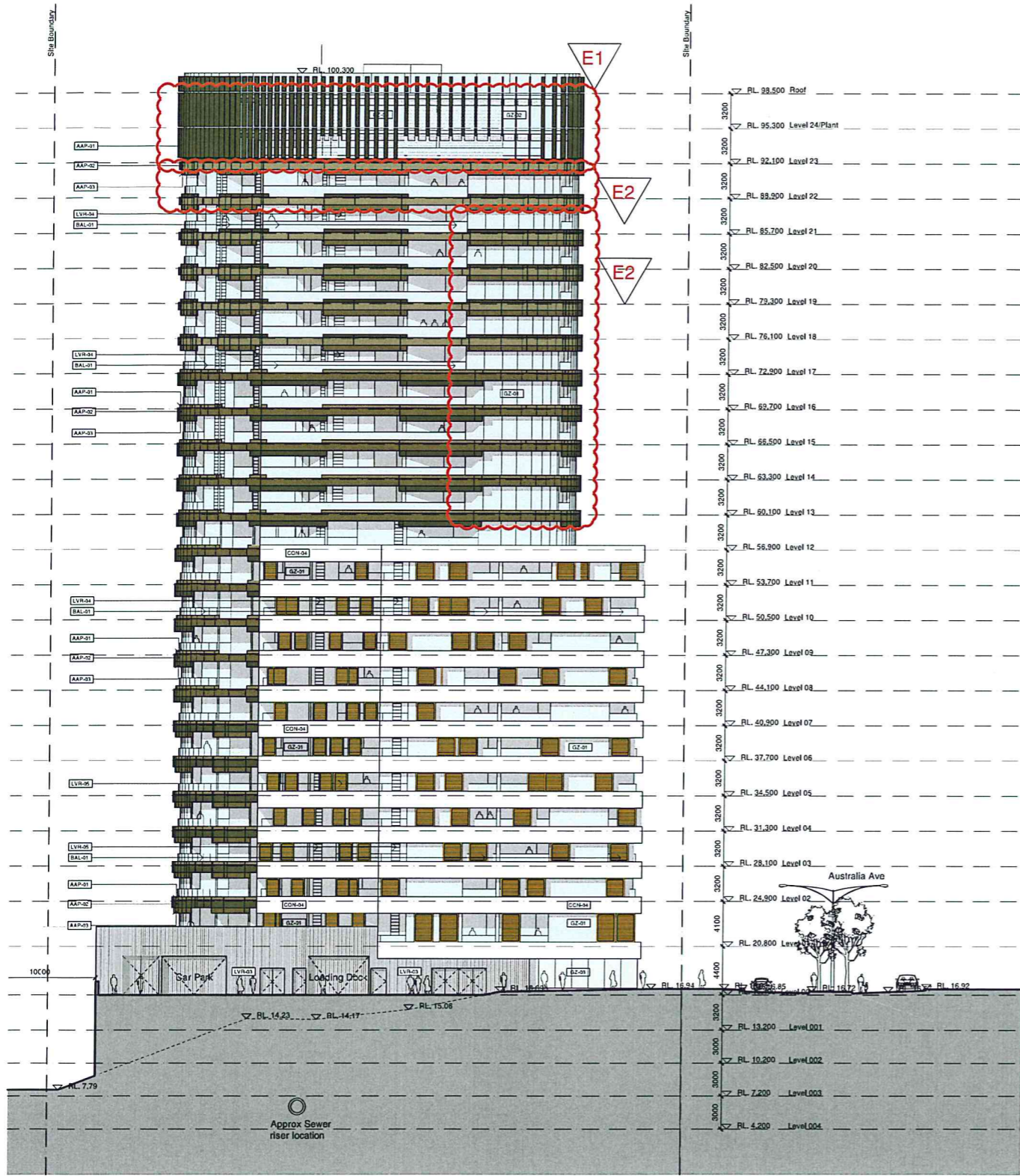
Scale: 1:200@A1, 1:400@A3
 Drawn: _____
 Checked: _____
 Project No.: S11202
 Status: DA
 Plot Date: 12/3/2012 2:29:21 PM
 Plot File: S:\11200-11299\11202_billbergia_homebush\03_eoc\cad\plots\...
 Drawing No.: DA02.224[E] (Revision)

Sydney 1/243 Liverpool Street
 East Sydney NSW 2010 Australia
 T 02 8354 5100 F 02 8354 5199
 email syd@batesmart.com.au
 http://www.batesmart.com.au

Melbourne 1 Nicholson Street
 Melbourne VIC 3000 Australia
 T 03 8664 6200 F 03 8664 6300
 email melb@batesmart.com.au
 http://www.batesmart.com.au

Bates Smart Pty Ltd ABN 70 004 599 400





NSW GOVERNMENT
Planning

Issued under the Environmental Planning and Assessment Act 1979

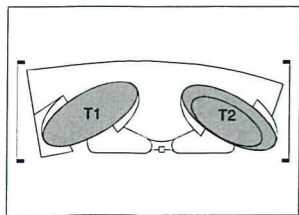
Approved Section 73W Modification Application
No. 10/10/2007. Approved on the 28 JUL 2012
in respect to MIP 10-0007

Signed: *[Signature]*

Sheet No. 8 of 12

1 North Elevation - Tower 1
1:250

1 South Elevation - Tower 2
1:250



EXTERIOR MATERIALS LEGEND

AAP-01	Anodised Aluminium Panel or similar - [Colour 1]	BAL-01	Glazed Balustrade in Anodised Aluminium Frame
AAP-02	Anodised Aluminium Panel or similar - [Colour 2]	GZ-01	Glazing
AAP-03	Anodised Aluminium Panel or similar - [Colour 3]	GZ-02	Fritted Curtain Wall Glazing
COH-04	Precast Concrete up-stand - Class 1 [Colour - 4]	GZ-03	Shop Front Glazing
LVR-01	Fixed Metal Louvres - Plant Area [Horizontal]	CTP-01	Composite Timber Panel
LVR-02	Fixed Timber Louvres [Vertical]		
LVR-03	Fixed Metal Channel [PFC]		
LVR-04	Operable Glass Louvres to Living Room		
LVR-05	Timber Louvered Panel		

Revision E - Section 73W Amendments

1. Lift apartments modified to single storey apartments on Level 23 & 24. Elevation amended to match current plans.
2. Elevation amended to match current plans.

Revision	Date	Description	ISSUED	CHECKED
E	12/03/12	Revised Consultants Review Issue E	PL	MD
D	04/11/11	Revised Design following SOPA comments	JC	MD
A	05/04/11	DA Submission	JL	MD

Site 3
Sydney Olympic Park
Elevation
North & South

Check all dimensions and site conditions prior to commencement of any work, the purchase or ordering of any materials, fittings, plant, services or equipment and the preparation of shop drawings and/or the fabrication of any components.
Do not make drawings refer to figured dimensions only. Any discrepancies shall immediately be referred to the architect for clarification.
All drawings may not be reproduced or distributed without prior permission from the architect.

Scale: 1:250

Drawn: _____ Checkered: _____

Project No.: S11202

Status: DA

Plot Date: 12/3/2012 2:29:29 PM

Plot File: S:\11200-11250-4\11202_billberga_homebush_00_eol_cad_plots\...
... 3A\DA05.01[E].dwg

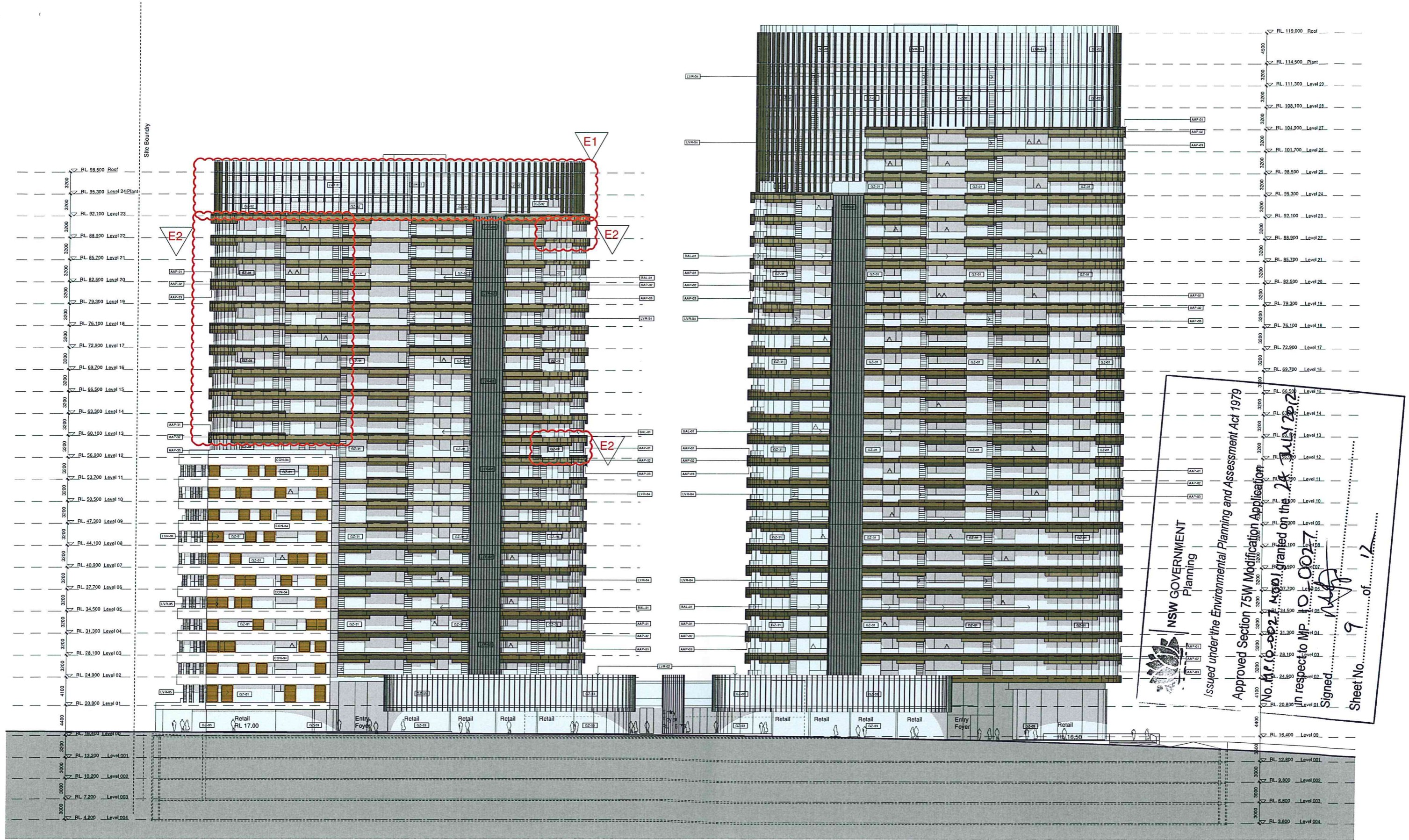
Drawing No.: DA05.01[E] [Revision]

Sydney 1/243 Liverpool Street
East Sydney NSW 2010 Australia
T 02 8354 5100 F 02 8354 5199
email syd@batesmart.com.au
http://www.batesmart.com.au

Melbourne 1 Nicholson Street
Melbourne VIC 3000 Australia
T 03 8664 6200 F 03 8664 6300
email mel@batesmart.com.au
http://www.batesmart.com.au

Bates Smart Pty Ltd ABN 70 004 599 400





1 West Elevation
1:250

EXTERIOR MATERIALS LEGEND

AAP-01	Anodised Aluminium Panel or similar - [Colour 1]	BAL-01	Glazed Balustrade in Anodised Aluminium Frame
AAP-02	Anodised Aluminium Panel or similar - [Colour 2]	GZ-01	Glazing
AAP-03	Anodised Aluminium Panel or similar - [Colour 3]	GZ-02	Fritted Curtain Wall Glazing
CON-04	Precast Concrete up-stand - Class 1 [Colour - 4]	GZ-03	Shop Front Glazing
LVR-01	Fixed Metal Louvres - Plant Area [Horizontal]	CTF-01	Composite Timber Panel
LVR-02	Fixed Timber Louvres [Vertical]		
LVR-03	Fixed Metal Channel [PFC]		
LVR-04	Operable Glass Louvres to Living Room		
LVR-05	Timber Loured Panel		

Revision E - Section 75W Amendments

1. Left apartments modified to single storey apartments on Level 23 & 24. Elevation amended to match current plans.
2. Elevation amended to match current plans.

Revision	Date	Description	Initial	Checked
E	12/03/12	Revised Consultants Review Issue E	FL	MD
D	04/11/11	Revised Design following SQPA comments	JC	MD
A	06/04/11	DA Submission	JL	MD

**Site 3
Sydney Olympic Park
Elevation
West Elevation**

Check all dimensions and site conditions prior to commencement of any work, the purchase or ordering of any materials, fittings, plants, services or equipment and the preparation of shop drawings and/or the fabrication of any components.
Do not scale drawings - refer to figured dimensions only. Any discrepancies shall immediately be referred to the architect for clarification.
All drawings may not be reproduced or distributed without prior permission from the architect.

Scale: 1:250

Drawn: _____ Checkec: _____

Project No: S11202

Status: DA

Plot Date: 12/3/2012 2:29:36 PM

Plot File: S:\11200-11299\11202_billbergia_homebush_00_eol_cad\plots_c...
...3A\DA05.02.dwg

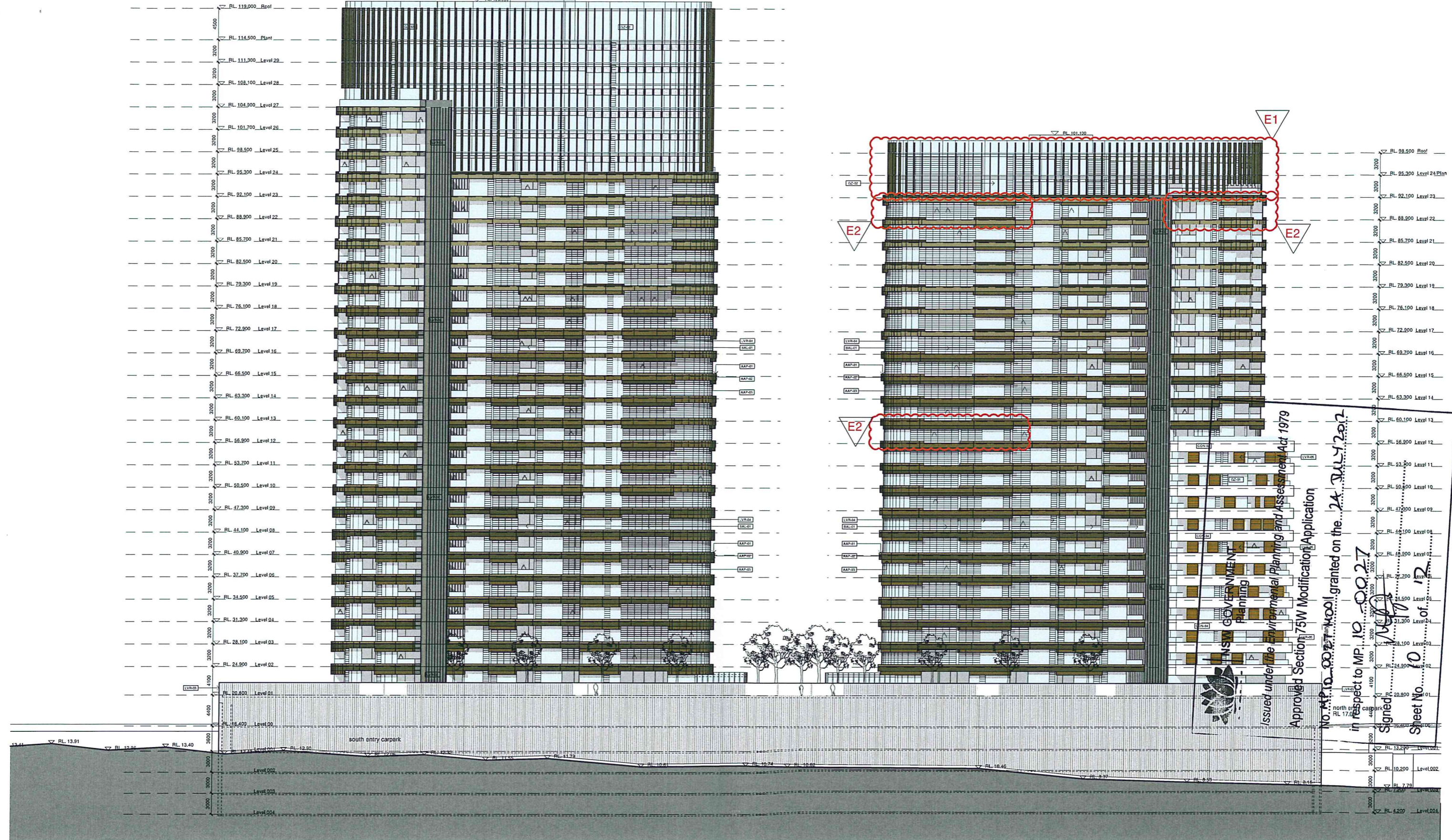
Drawing No: DA05.02[E] [Revision]

Sydney 1/243 Liverpool Street
East Sydney NSW 2010 Australia
T 02 8354 5100 F 02 8354 5199
email syd@batesmart.com.au
http://www.batesmart.com.au

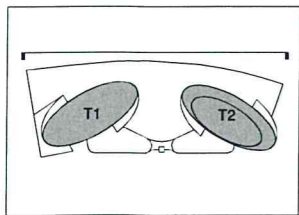
Melbourne 1 Nicholson Street
Melbourne VIC 3000 Australia
T 03 8664 6200 F 03 8664 6300
email melb@batesmart.com.au
http://www.batesmart.com.au

Bates Smart Pty Ltd ABN 70 004 599 400





1 East Elevation
1:250



EXTERIOR MATERIALS LEGEND

AAP-01	Anodised Aluminium Panel or similar - [Colour 1]	BAL-01	Glazed Balustrade in Anodised Aluminium Frame
AAP-02	Anodised Aluminium Panel or similar - [Colour 2]	GZ-01	Glazing
AAP-03	Anodised Aluminium Panel or similar - [Colour 3]	GZ-02	Fritted Curtain Wall Glazing
CON-04	Precast Concrete up-stand - Class 1 [Colour - 4]	GZ-03	Shop Front Glazing
LVR-01	Fixed Metal Louvres - Plant Area [Horizontal]	CTF-01	Composite Timber Panel
LVR-02	Fixed Timber Louvres [Vertical]		
LVR-03	Fixed Metal Channel [PFC]		
LVR-04	Operable Glass Louvres to Living Room		
LVR-05	Timber Louver Panel		

Revision E - Section 75W Amendments

1. Lift apartments modified to single storey apartments on Level 23 & 24. Elevation amended to match current plans.
2. Elevation amended to match current plans.

Revision	Date	Description	By	Checked
E	12/03/12	Revised Consultants Review Issue E	PL	MD
D	04/11/11	Revised Design following SQPA comments	JC	MD
A	06/04/11	DA Submission	JL	MD

**Site 3
Sydney Olympic Park
Elevation
East**

Check all dimensions and site conditions prior to commencement of any work, the purchase or ordering of any materials, fittings, plant, services or equipment and the preparation of shop drawings and/or the fabrication of any components.
Do not scale drawings - refer to figured dimensions only. Any discrepancies shall immediately be referred to the architect for clarification.
All drawings may not be reproduced or distributed without prior permission from the architect.

Scale: 1:250

Drawn: _____ Check: _____

Project No.: S11202

Status: DA

Plot Date: 12/3/2012 2:29:44 PM

Plot File: S:\11200-11299-411202_bilberglia_homebush_00_eol_cad\plots\E...
...3A\DA05.03.dwg

Drawing No.: DA05.03[E] [Revision]

Sydney 1/243 Liverpool Street
East Sydney NSW 2010 Australia
T 02 8354 5100 F 02 8354 5199
email syd@batesmart.com.au
http://www.batesmart.com.au

Melbourne 1 Nicholson Street
Melbourne VIC 3000 Australia
T 03 8664 6200 F 03 8664 6300
email melb@batesmart.com.au
http://www.batesmart.com.au

Bates Smart Pty Ltd ABN 70 004 599 400



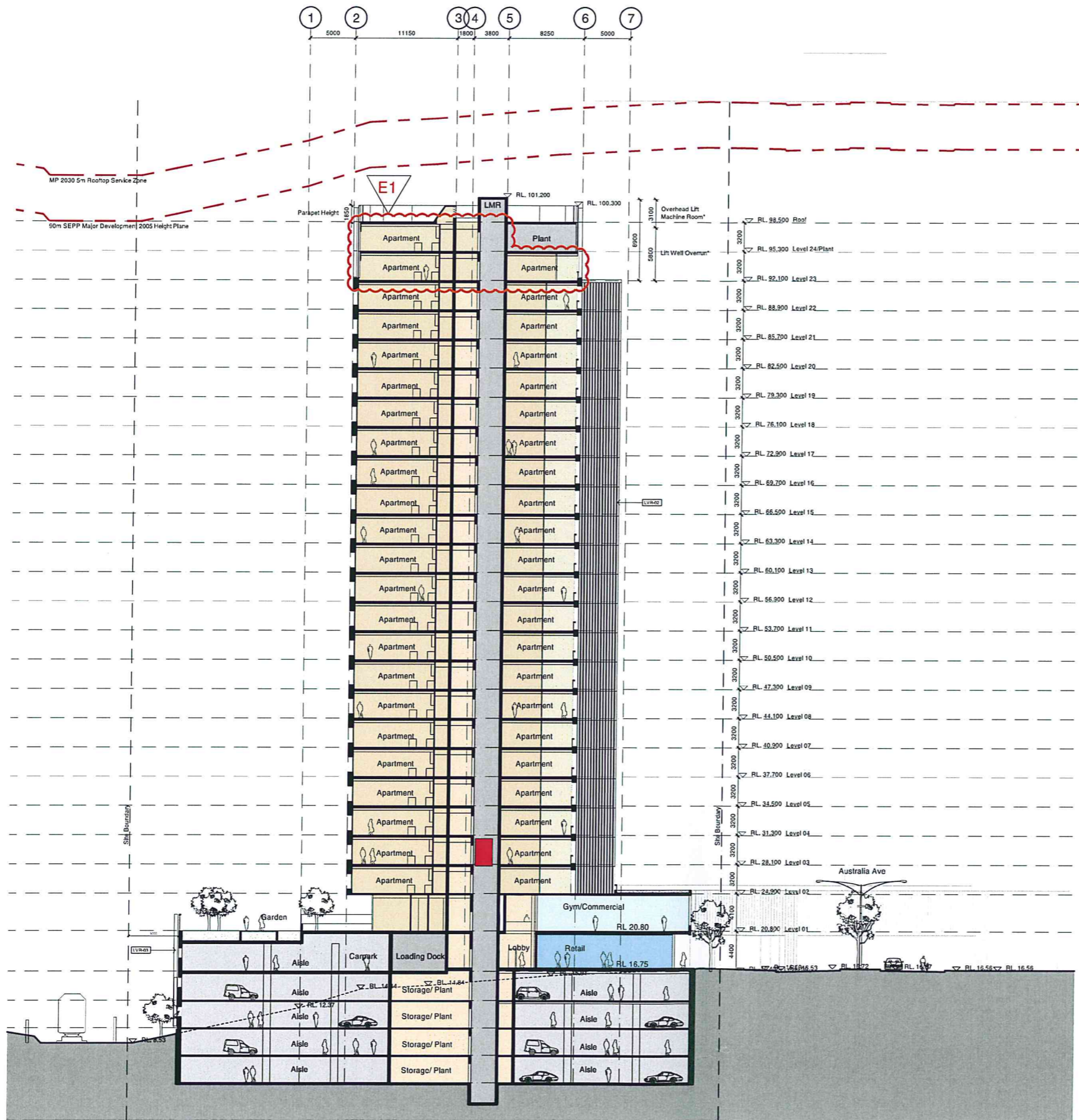
**NSW GOVERNMENT
Planning**

Issued under the *Environmental Planning and Assessment Act 1979*

Approved Section 75W Modification Application

No. MP.10.00277/Kooli granted on the 24 JULY 2012
in respect to MP.10.00277

Signed: _____ of _____
Sheet No. 10 of 2



*Note:
Please refer to letter from Norman Disney & Young dated 30.08.2011 regarding lift motor room and overrun requirements.

NSW GOVERNMENT Planning

Issued under the Environmental Planning and Assessment Act 1979

Approved Section 75W Modification Application

No. MP10-0027 mod 1 granted on the 24 JULY 2012

in respect to MP 10-0027

Signed.....

Sheet No. 11 of 12

1 Section AA

1:250

EXTERIOR MATERIALS LEGEND

AAP-01	Anodised Aluminium Panel or similar - [Colour 1]	BAL-01	Glazed Balustrade in Anodised Aluminium Frame
AAP-02	Anodised Aluminium Panel or similar - [Colour 2]	GZ-01	Glazing
AAP-03	Anodised Aluminium Panel or similar - [Colour 3]	GZ-02	Fritted Curtain Wall Glazing
CON-04	Precast Concrete up-stand - Class 1 [Colour - 4]	GZ-03	Shop Front Glazing
LVR-01	Fixed Metal Louvres - Plant Area [Horizontal]	CTF-01	Composite Timber Panel
LVR-02	Fixed Timber Louvres [Vertical]		
LVR-03	Fixed Metal Channel [PFC]		
LVR-04	Operable Glass Louvres to Living Room		
LVR-05	Timber Louver Panel		

Revision E - Section 75W Amendments

1. Lift apartments modified to single storey apartments on Level 23 & 24. Lift access has been extended to serve Level 24 apartments.

Revision	Date	Description	Initial	Checked
E	12/03/12	Revised Consultants Review Issue E	PL	MD
D	04/11/11	Revised Design following SOPA comments	JC	MD
B	05/09/11	Revised DA Issue	JC	MD
A	06/04/11	DA Submission	JL	MD

Site 3
Sydney Olympic Park
Section AA

Scale	1:250
Drawn	Checked
Project No.	S11202
Status	DA
Plot Date	12/3/2012 2:29:50 PM
Plot File	S:\11200-11299\11202_billberg's_homebush\00_eo\csp\plot...
Drawing No.	DA06.01[E] (Revision)

Sydney 1/243 Liverpool Street
East Sydney NSW 2010 Australia
T 02 8354 5100 F 02 8354 5199
email syd@batesmart.com.au
http://www.batesmart.com.au

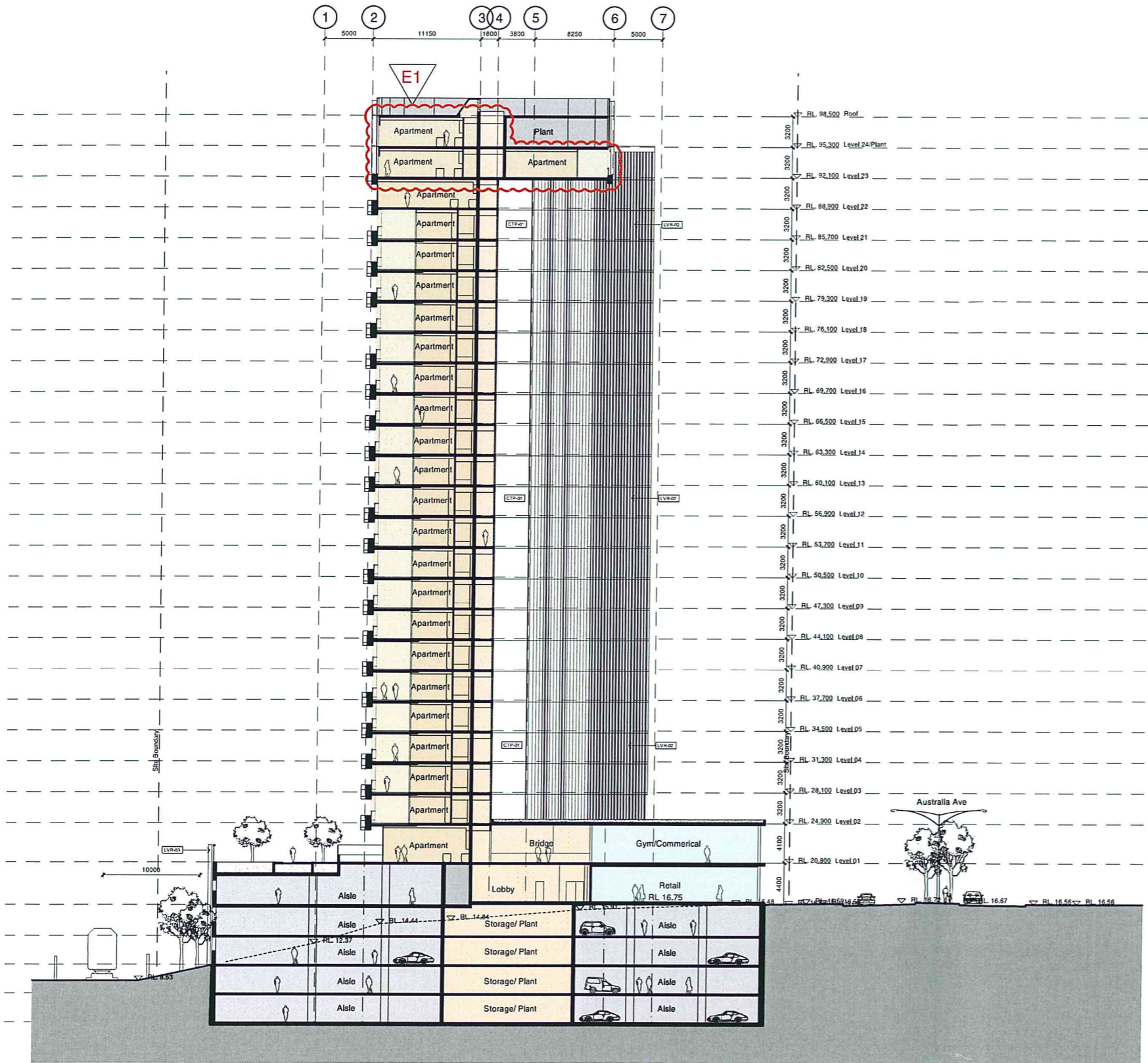
Melbourne 1 Nicholson Street
Melbourne VIC 3000 Australia
T 03 8664 6200 F 03 8664 6300
email melb@batesmart.com.au
http://www.batesmart.com.au


Bates Smart Pty Ltd ABN 70 004 999 400

Check all dimensions and site conditions prior to commencement of any work, the purchase or ordering of any materials, siting, plant, services or equipment and the preparation of shop drawings and/or the fabrication of any components.
Do not scale drawings - refer to typed dimensions only. Any discrepancies shall immediately be referred to the architect for clarification.
All drawings may not be reproduced or distributed without prior permission from the architect.

DA06.01[E]

BATESSMART




NSW GOVERNMENT
 Planning

Issued under the Environmental Planning and Assessment Act 1979
 Approved Section 75W Modification Application
 No. MP 10 0027 Mod 1 granted on the 24 JULY 2012
 in respect to MP 10 0027
 Signed [Signature]
 Sheet No. 12 of 12

1 Section BB
1:250

EXTERIOR MATERIALS LEGEND

AAP-01 Anodised Aluminium Panel or similar - [Colour 1]	BAL-01 Glazed Balustrade in Anodised Aluminium Frame
AAP-02 Anodised Aluminium Panel or similar - [Colour 2]	GZ-01 Glazing
AAP-03 Anodised Aluminium Panel or similar - [Colour 3]	GZ-02 Fritted Curtain Wall Glazing
CON-04 Precast Concrete up-stand - Class 1 [Colour - 4]	GZ-03 Shop Front Glazing
LVR-01 Fixed Metal Louvres - Plant Area [Horizontal]	CTP-01 Composite Timber Panel
LVR-02 Fixed Timber Louvres [Vertical]	
LVR-03 Fixed Metal Channel [PFC]	
LVR-04 Operable Glass Louvres to Living Room	
LVR-05 Timber Louverd Panel	

Revision E - Section 75W Amendments

1. Left apartments modified to single storey apartments on Level 23 & 24.

Revision	Date	Description	Initial	Checked
E	12/03/12	Revised Consultants Review Issue E	PL	MD
D	04/11/11	Revised Design following SOPA comments	JC	MD
A	06/04/11	DA Submission	JL	MD

Site 3
 Sydney Olympic Park
 Section BB

Scale	1:250
Drawn	Checked
Project No.	S11202
Status	DA
Plot Date	12/3/2012 2:29:59 PM
Plot File	S:\11200-11299-s11202_billberglia_homebush_00_001.cad plots E...
Drawing No.	DA06.02[<u>E</u>]

Sydney 1/243 Liverpool Street
 East Sydney NSW 2010 Australia
 T 02 8354 5100 F 02 8354 5199
 email syd@batesmart.com.au
 http://www.batesmart.com.au

Melbourne 1 Nicholson Street
 Melbourne VIC 3000 Australia
 T 03 8664 6200 F 03 8664 6300
 email melb@batesmart.com.au
 http://www.batesmart.com.au

Bates Smart Pty Ltd ABN 70 004 999 400



Check all dimensions and site conditions prior to commencement of any work, the purchase or ordering of any materials. Storage, plant, services or equipment and the preparation of shop drawings and/or the fabrication of any components.
 Do not scale drawings - refer to figure dimensions only. Any discrepancies shall immediately be referred to the architect for clarification.
 All drawings may not be reproduced or distributed without prior permission from the architect.