



Legend

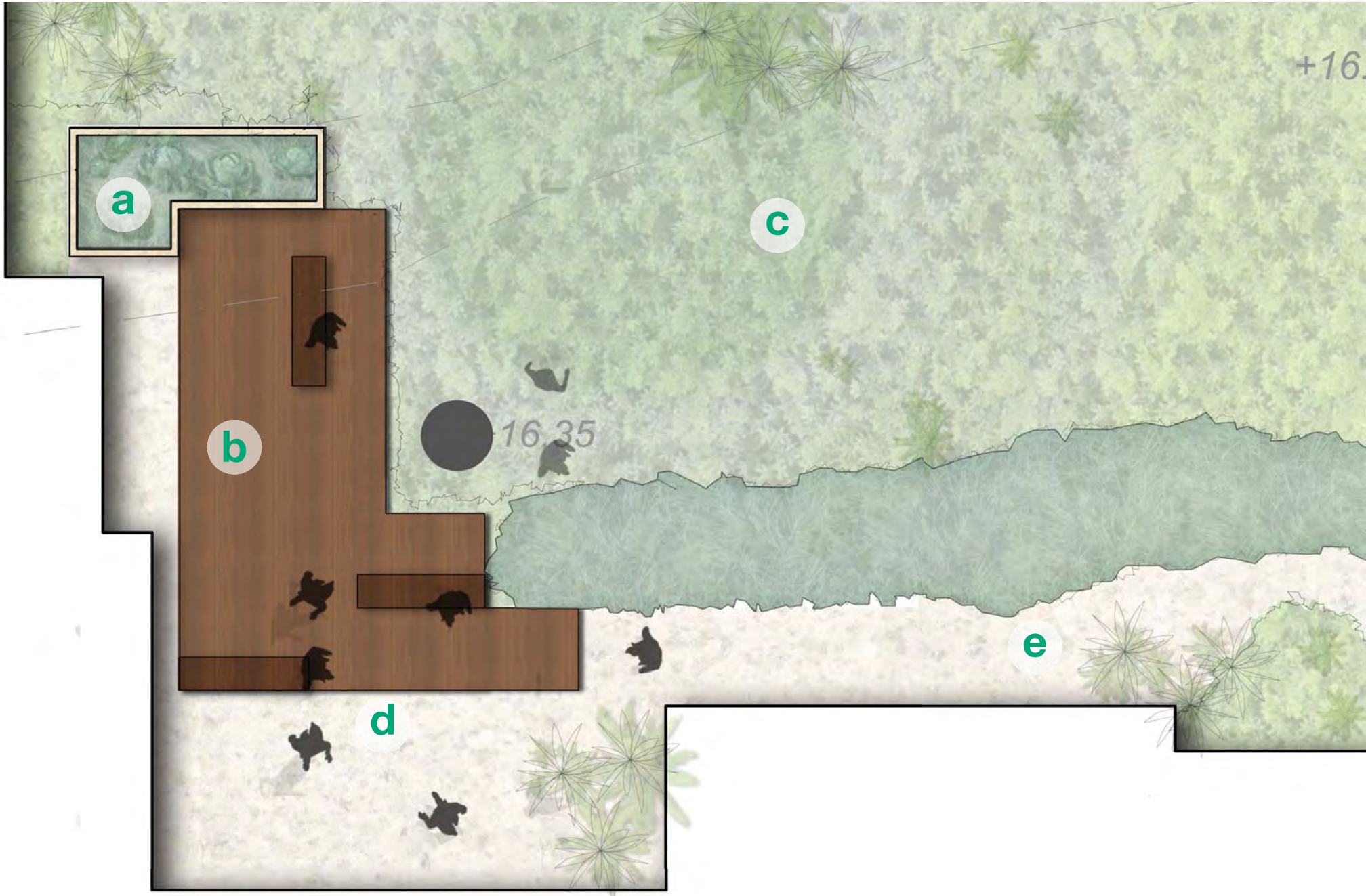
- A.** Light screen planting of traditional specimens to define private courtyards.
- B.** Traditional garden terracing reinstated to display heritage garden species and define primary use areas. Retain existing sandstone wall and concrete stairs to extent shown. Heritage sandstone stairs to be reinstated to proposed setout.
- C.** Pick up/ drop off and passive recreation area with extensive garden planting and seating area opportunities adjacent to covered walkway.
- D.** Middle link garden to lower park areas. Low gradient ramp access, sensory planting and 'sanctuary' seating areas amongst low raised planters, small flowering trees and reflection pool.
- E.** Entry to park area set out to bookend the middle garden area and establishing long north south views through the site.
- F.** Main open sun lawn area.
- G.** Site community interactive hobby garden plots.
- H.** Exercise and wandering areas set amongst ornamental planting, exercise equipment and seating areas.
- I.** Timber and gravel circuit path addressing grand existing trees providing a link from the middle garden area to the boundary gate and adjoining park area.
- J.** T116 removed and replaced with advanced *Ficus rubiginosa*
- K.** Replace existing weed tree species with fast growing, advanced native screen tree stock. Retain existing mature screen trees where appropriate. Complement with native planted under storey.
- L.** Low native planting to courtyard area and vigorous flowering native climbing plants to cable or steel mesh system on adjacent wall face.
- M.** Retain existing ground levels to protect existing *Quercus ilex* (Holm Oak), including reinstatement of existing stone retaining structure adjacent to this tree (shown indicatively).
- N.** Public pocket park allows greater surveillance across this corner and a safe waiting area for public. Timber deck as primary ground plane protects existing trees from compaction and a level link to a ramp access system from within the hospital site. Multiple seating opportunities are set back from the street among large planted beds and recycled sandstone elements.
- O.** Existing banks are proposed to be intensively re vegetated with low growing locally native species after removal of invasive herbaceous plants such as *Lantana* and *Tradescantia*.
- P.** Planted roof terraces provide passive recreational areas looking towards adjoining tree canopies.
- Q.** Spa deck and garden area provides summer respite area setout around large existing tree (deck protects tree against compaction) Seating and picnic table are built into deck and ornamental garden beds define the area against the greater planted embankment. Refer to project architect for overhead walkway link to Brown Street. Tree 116 to be replaced with advanced *Ficus rubiginosa*.
- R.** Retain and protect existing trees.
- S.** Colour defined entry and middle garden area paving ensures pedestrian priority and traffic calming.
- T.** Entry areas intensively planted with ornamental species and access defined to adjoining park areas and pedestrian safety access.
- U.** Entry link to passive recreation terrace areas from ILU building.
- V.** Entry link to dementia lawn and sensory gardens passive recreation lawn from adjoining building.
- W.** Planted roof and balcony areas.
- X.** Indicative location for pump room.





Detail Plan 1 - Cooper Street - Brown Street Interface [1:100]

- Legend**
- a. Ornamental low growing planted beds
 - b. Timber benches and stairs adjoining deck area
 - c. Deck cut around existing tree
 - d. Access ramp at 1:14 with landings and security gate
 - e. Pallisade fence on sandstone block wall
 - f. Sandstone bench seating
 - g. Security gate



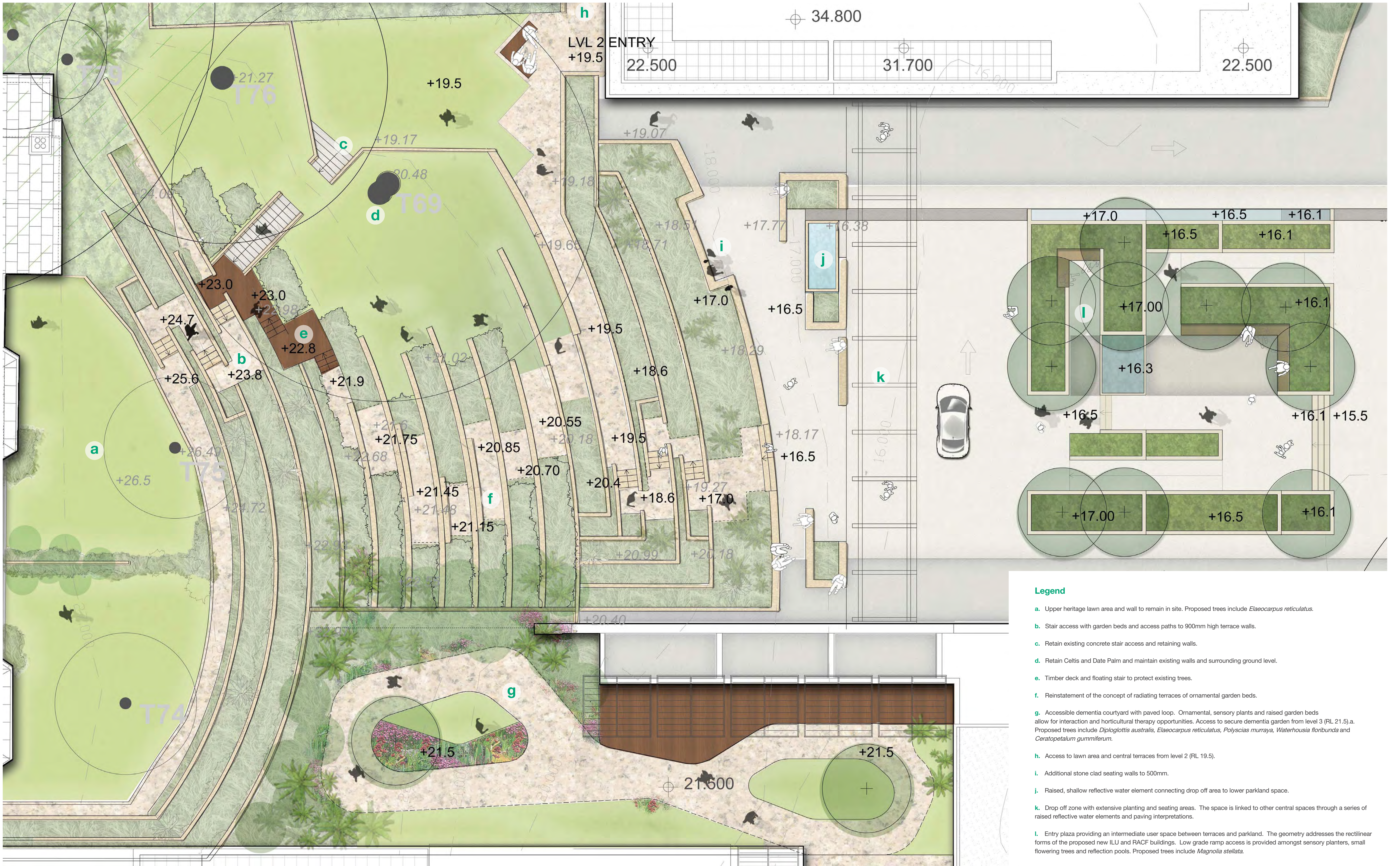
Detail Plan 2 - Brown Street Link [1:100]

- Legend**
- a. Ornamental planting beds to low raised stone clad planters.
 - b. Timber deck with social seating raised over tree root zone.
 - c. Low growing native planting to embankment.
 - d. Compacted Gravel on permeable paved path access.
 - e. Informal maintenance path.



Section 1 - Cooper Street - Brown Street Public Open Space





Detail Plan 3 - Terraces and Entry Plaza [1:100]



Detail Plan 4 - Scottish Hospital [1:100]

Legend

- a. Final feature of connective water element.
- b. Social seating terminates plaza area and creates entry definition to the parkland area.
- c. Timber deck walk protecting tree roots and defining park area.
- d. Colourful buffer planting defines entry and park edge.
- e. Existing grand tree specimens are retained and enhanced with low ornamental plants.
- f. Secondary recreation path.
- g. Communal raised hobby garden and vegetable plots.
- h. Recreational exercise areas.
- i. Gated access to Dillon Reserve.
- j. Low, dense planted areas create buffers and visually enhance existing vegetation and spaces.
- k. Central, open lawn area.



Planting Precinct Locations



INDICATIVE MASTER PLANT SCHEDULE

Botanical Name	Common Name	Mature H x W (m)
----------------	-------------	------------------

Trees, Palms & Large Shrubs		
<i>Ceratopetalum apetalum</i>	Coachwood	
<i>Ceratopetalum gummiferum</i>	NSW Christmas Bush	
<i>Cordyline petiolaris</i>	Palm Lily	5 x 7
<i>Cupaniopsis anacardioides</i>	Tuckeroo	
<i>Diploglottis australis</i>	Native Tamarind	
<i>Doryanthes palmeri</i>	Spear Lily	3 x 2
<i>Elaeocarpus eumundii</i>		
<i>Elaeocarpus reticulatus</i>	Blueberry Ash	
<i>Ficus rubiginosa</i>	Port Jackson Fig	
<i>Gordonia axillaris</i>	Fried Egg Plant	
<i>Lagerstroemia indica</i>	Crepe Myrtle	
<i>Livistona australis</i>	Cabbage Tree Palm	25 x 4
<i>Magnolia stellata</i>	Star Magnolia	
<i>Polyscias murrayi</i>	Pencil Cedar	
<i>Waterhousia floribunda</i>	Weeping Lilly Pilly	
<i>Yucca elephantipes</i>	Soft-Tipped Yucca	4 x 4

Shrubs & Accents		
<i>Alocasia macrorrhiza</i>	Elephants Ears	3 x 2
<i>Agave attenuata</i>	Agave	
<i>Alpinia caerulea</i> 'Red Back'	Red Back Native Ginger	1 x 1
<i>Alpinia zerumbet</i>	Ginger	1 x 1
<i>Adiantum formosum</i>	Giant Maidenhair Fern	1 x 1
<i>Arthropodium cirratum</i>	Renga Lily	1 x 1
<i>Asplenium nidus</i>	Birds Nest Fern	1.5 x 1
<i>Astelia chathamica</i>	Silver Spear	1.5 x 1.5
<i>Camellia sasanqua</i>	Camellia	
<i>Crinum pedunculatum</i>	Swamp Lily	
<i>Cordyline petiolaris</i>	Broad Leaved Palm Lily	5 x 1
<i>Cordyline stricta</i>	Narrow Leaved Palm Lily	5 x 1
<i>Echium fastuosum</i>	Pride of Maldera	
<i>Helmholtzia glabberima</i>	Stream Lily	2 x 1.5
<i>Lavendula angustifolia</i>	Lavender	
<i>Rosmarinus officianalis</i>	Rosemary	
<i>Salvia sp.</i>	Sage	
<i>Verbena sp.</i>	Verbena	
<i>Westringia fruticosa</i> 'Wynyabbie Gem'	Coastal Rosemary	1 x 1

Groundcovers, Grasses & Climbers		
<i>Aphanopetalum resinosum</i>	Resin Vine	CLIMBER
<i>Antirrhinum sp.</i>	Snapdragon	
<i>Artemisia sp.</i>	Wormwood	
<i>Blechnum cartilaginium</i>	Water Fern	0.6 x 0.6
<i>Blechnum 'Silver Lady'</i>	Silver Lady Fern	0.5 x 1
<i>Carex oshimensis</i>	Japanese Forest Grass	0.2 x 0.2
<i>Cissus antarctica</i>	Kangaroo Vine	
<i>Clematis aristata</i>	Old Mans Beard	CLIMBER
<i>Clematis paniculata</i>	Sweet Autumn Clematis	CLIMBER
<i>Clivia sp.</i>	Clivia	
<i>Dendrobium speciosum</i>	Rock Orchid	
<i>Dichondra repens</i> 'Silver Falls'	Silver Dichondra	1 x 1
<i>Echium sp.</i>	Echium	0.5 x 0.5
<i>Eremophila glabra</i> 'Silver Spread'	Prostrate Emu Bush	1 x 1
<i>Euphorbia characias</i>	Mediterranean Spurge	1 x 1
<i>Ficus pumila</i>	Creeping Fig	CLIMBER
<i>Hibbertia scandens</i>	Golden Guinea Vine	CLIMBER
<i>Imperata cylindrica</i>	Japanese Blood Grass	
<i>Isolepis nodosa</i> 'Arida'	Knobby Club Rush	0.6 x 0.4
<i>Myoporum parvifolium</i>	Creeping Boobialla	0.2 x 1
<i>Miscanthus sinensis</i> 'Zebrinus'	Zebra Grass	1.5 x 1.5
<i>Lepironia articulata</i>	Blue Rush	0.7 x 0.7
<i>Lomandra confertifolia</i> 'Grey Cascade'	Tuft Lomandra	0.3 x 0.5

Planting Precincts

COOPER STREET FRONTAGE

Sedum sp.

Sempervivum sp.

Sempervivum sp.

Viola odorata

Sedum sp.

Senecio sp.

Euphorbia characias

Echium sp.

Yucca elephantipes

STEPHEN STREET FRONTAGE

Elaeocarpus reticulatus

RACF GARDEN + TERRACES

Rosmarinus officinalis

Camellia sasanqua

Salvia sp.

Viola tricolor

Thymus sp.

Lavandula sp.

Antirrhinum sp.

Santolina chamaecyparissus

Imperata cylindrica

Petunia sp.

TERRACES

Sandstone terraces with low planting

Grassed banks with lavender

Sandstone terraces

Parthenocissus sp.

Parthenocissus sp.

Sandstone terraces and timber decking

Gathering spaces amongst planting

Terraced landscape

Low meadow planting

Michelia figo

UPPER [ORIGINAL] TERRACE

Artemisia sp.

Meadow planting

Lagerstroemia sp.

Camellia sp.

Alocasia macrorrhiza

Gordonia axillaris

Informal, planted courtyard

PARKLAND

Informal terraces

Terraced reflection pond

NIELD AVENUE BOUNDARY

Densely planted groundcovers

Dichondra repens

Asplenium australasicum

COOPER ST. & NIELD AVE. CNR

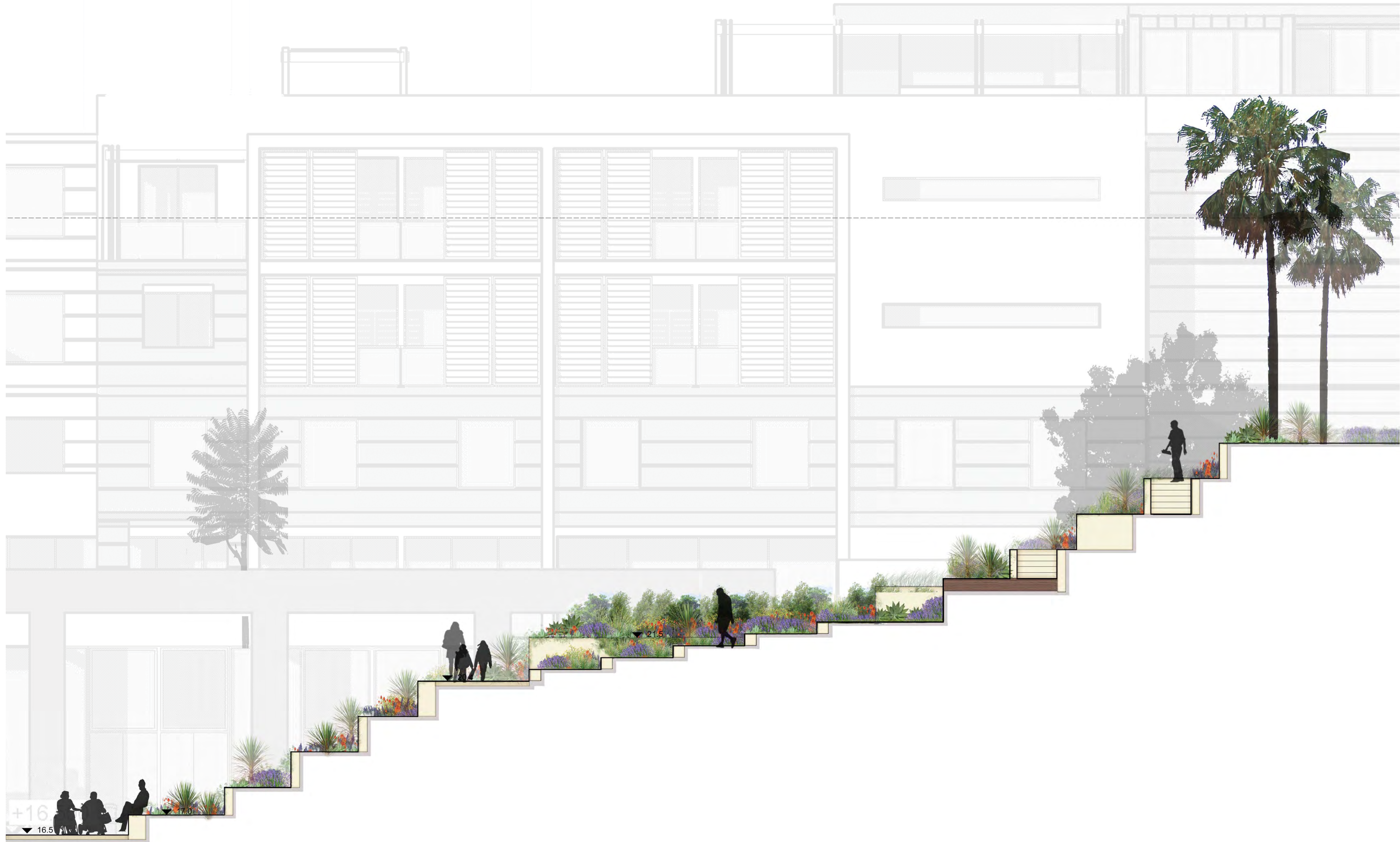
Existing sandstone wall at Cooper Street

Timber planters and seating

Dendrobium speciosum

<i>Lomandra hystrix</i> 'Tropic Belle'	Broad Leaf Lomandra	0.5 x 0.5
<i>Lomandra 'Nyalia'</i>	Fine Leaf Lomandra	0.5 x 0.5
<i>Lomandra 'Tanika'</i>	Dwarf Mat Rush	0.5 x 0.5
<i>Pandorea pandorana</i>	Wonga-Wonga Vine	CLIMBER
<i>Parthenocissus sp.</i>	Virginia Creeper	CLIMBER
<i>Pelargonium australe</i>	Wild Geranium	0.5 x 0.5
<i>Pennisetum alopecuroides</i> 'Black Lea'	Black Lea Native Foxtail Grass	0.6 x 0.6
<i>Pennisetum alopecuroides</i> 'Nafray'	Nafray Native Foxtail Grass	0.6 x 0.6
<i>Petunia sp.</i>	Petunia	
<i>Poa labillardieri</i> 'Eskdale'	Blue Tussock Grass	0.5 x 0.5
<i>Pratia pedunculata</i>	Blue Star Creeper	0.2 x 2
<i>Santolina chamaecyparissus</i>	Cotton Lavender	
<i>Sedum sp.</i>	Stonecrops	GROUNDCOVER
<i>Sempervivum sp.</i>	Sempervivum	GROUNDCOVER
<i>Senecio sp.</i>	Blue Chalk Sticks	GROUNDCOVER
<i>Solanum jasminoides</i>	Potato Vine	CLIMBER
<i>Sollya heterophylla</i>	Bluebell Creeper	0.1 x 0.5
<i>Thymus sp.</i>	Thyme	
<i>Viola hederacea</i>	Native Violet	0.1 x 0.5
<i>Viola odorata</i>	Sweet Violet	0.1 x 0.5
<i>Viola tricolor</i>	Pansy	0.1 x 0.5
<i>Zieria prostrata</i>	Carpet Star	0.3 x 0.5
<i>Zoysia macrantha</i>	Nara Zoysia	TURF





Section 2 - Traditional garden terracing



Cooper Street Frontage



Cooper Street & Stephen Street Frontages